

RESOLUTION NO. 2002- 248  
RESOLUTION OF THE BOARD OF COUNTY  
COMMISSIONERS OF ST. JOHNS COUNTY, FLORIDA  
APPROVING A SUBDIVISION PLAT FOR  
JULINGTON CREEK PLANTATION PARCEL 53 PHASE 2

WHEREAS, D.R.HORTON, INC.-JACKSONVILLE, a Delaware Corporation, has applied to the Board of County Commissioners of St. Johns County, Florida for approval to record a subdivision plat known as  
Julington Creek Plantation Parcel 53 Phase 2

NOW, THEREFORE BE IT RESOLVED BY THE BOARD OF COUNTY COMMISSIONERS OF ST. JOHNS COUNTY, FLORIDA, as follows:

Section 1. The above-described subdivision plat and its dedicated areas depicted thereon are conditionally approved and accepted by the Board of County Commissioners of St. Johns County, Florida subject to Sections 2, 4, 3 and 5.

Section 2. A Construction Bond has been filed with the Clerk of Court in the amount of \$266,348.31.

Section 3. A Maintenance Bond in the amount of \$ 109,345.94 will be required.

Section 4. The approval and acceptance described in Section 1 shall not take effect until the Clerk has received a title opinion, certificate, or policy pertaining to the real property that is the subject of the aforementioned subdivision plat which opinion, certificate or policy is in a form acceptable to the County Attorney or Assistant County Attorney.

Section 5. The approval and acceptance described in Section 1 shall not take effect until the plat has been signed by each of the following departments, person or offices:

- a) Chairman or Vice-Chairman of the Board of County Commissioners of St. Johns County, Florida;
- b) Office of the County Attorney;

- c) County Planning and Zoning Department;
- d) Office of the County Surveyor; and
- e) Clerk of Courts.

The Clerk shall not sign or accept the Plat for recording until it has been signed by each of the above persons or entities described in a) through d) above. If the plat is not signed and accepted by the Clerk for recording within 14 days from the date hereof, then the above-described conditional approval shall automatically terminate. If the plat is signed by the Clerk on or before such time, the conditions described herein shall be deemed to have been met.

ADOPTED by the Board of County Commissioners of St. Johns County, Florida, this 12 day of November, 2002.

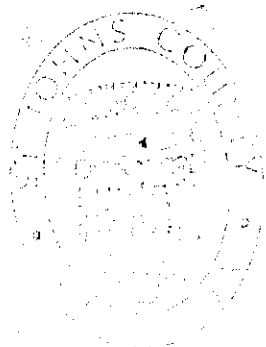
BOARD OF COUNTY COMMISSIONERS  
OF ST. JOHNS COUNTY, FLORIDA

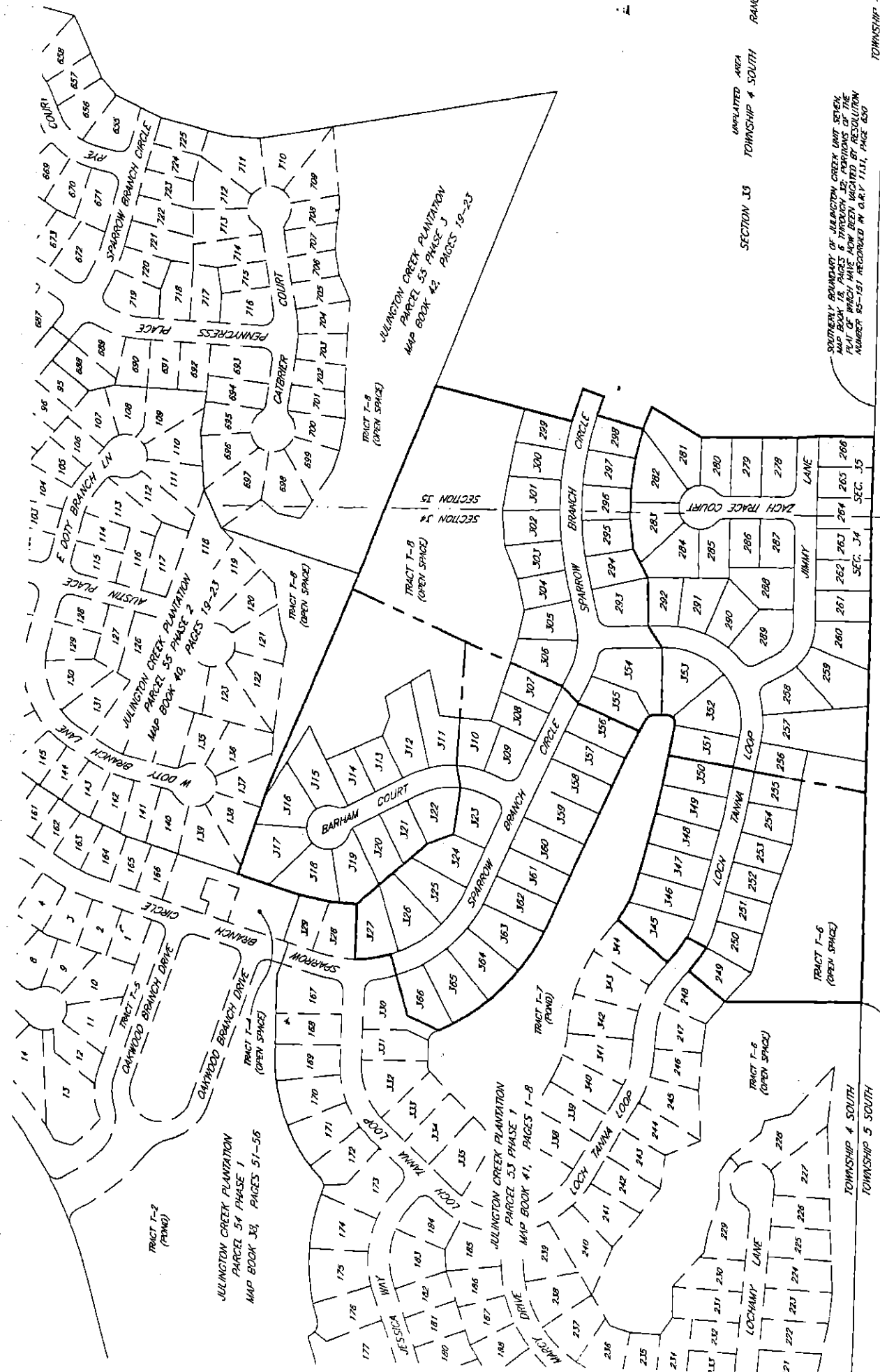
BY: James E. Bryant  
James E. Bryant, Its Chair

ATTEST: Cheryl Strickland

Patricia DeGrande  
Deputy Clerk

RENDITION DATE 11-15-02





TRACT T-2 (ROUND)

JULLINGTON CREEK PLANTATION  
PARCEL 54 PHASE 1  
MAP BOOK 38, PAGES 51-56

JULLINGTON CREEK PLANTATION  
PARCEL 55 PHASE 1  
MAP BOOK 41, PAGES 1-8

JULLINGTON CREEK PLANTATION  
PARCEL 55 PHASE 2  
MAP BOOK 49, PAGES 19-23

JULLINGTON CREEK PLANTATION  
PARCEL 55 PHASE 3  
MAP BOOK 42, PAGES 19-23

TRACT T-1 (OPEN SPACE)

TRACT T-2 (OPEN SPACE)

TRACT T-3 (OPEN SPACE)

TRACT T-4 (OPEN SPACE)

TRACT T-5 (OPEN SPACE)

TRACT T-6 (OPEN SPACE)

TRACT T-7 (ROUND)

TRACT T-8 (OPEN SPACE)

TRACT T-9 (OPEN SPACE)

TRACT T-10 (OPEN SPACE)

TRACT T-11 (OPEN SPACE)

TRACT T-12 (OPEN SPACE)

TRACT T-13 (OPEN SPACE)

TRACT T-14 (OPEN SPACE)

TRACT T-15 (OPEN SPACE)

TRACT T-16 (OPEN SPACE)

TRACT T-17 (OPEN SPACE)

TRACT T-18 (OPEN SPACE)

TRACT T-19 (OPEN SPACE)

TRACT T-20 (OPEN SPACE)

TRACT T-21 (OPEN SPACE)

TRACT T-22 (OPEN SPACE)

TRACT T-23 (OPEN SPACE)

TRACT T-24 (OPEN SPACE)

TRACT T-25 (OPEN SPACE)

TRACT T-26 (OPEN SPACE)

TRACT T-27 (OPEN SPACE)

TRACT T-28 (OPEN SPACE)

TRACT T-29 (OPEN SPACE)

TRACT T-30 (OPEN SPACE)

TRACT T-31 (OPEN SPACE)

TRACT T-32 (OPEN SPACE)

TRACT T-33 (OPEN SPACE)

TRACT T-34 (OPEN SPACE)

TRACT T-35 (OPEN SPACE)

TRACT T-36 (OPEN SPACE)

TRACT T-37 (OPEN SPACE)

TRACT T-38 (OPEN SPACE)

TRACT T-39 (OPEN SPACE)

TRACT T-40 (OPEN SPACE)

TRACT T-41 (OPEN SPACE)

TRACT T-42 (OPEN SPACE)

TRACT T-43 (OPEN SPACE)

TRACT T-44 (OPEN SPACE)

TRACT T-45 (OPEN SPACE)

TRACT T-46 (OPEN SPACE)

TRACT T-47 (OPEN SPACE)

TRACT T-48 (OPEN SPACE)

TRACT T-49 (OPEN SPACE)

TRACT T-50 (OPEN SPACE)

TRACT T-51 (OPEN SPACE)

TRACT T-52 (OPEN SPACE)

TRACT T-53 (OPEN SPACE)

TRACT T-54 (OPEN SPACE)

TRACT T-55 (OPEN SPACE)

TRACT T-56 (OPEN SPACE)

TRACT T-57 (OPEN SPACE)

TRACT T-58 (OPEN SPACE)

TRACT T-59 (OPEN SPACE)

TRACT T-60 (OPEN SPACE)

TRACT T-61 (OPEN SPACE)

TRACT T-62 (OPEN SPACE)

TRACT T-63 (OPEN SPACE)

TRACT T-64 (OPEN SPACE)

TRACT T-65 (OPEN SPACE)

TRACT T-66 (OPEN SPACE)

TRACT T-67 (OPEN SPACE)

TRACT T-68 (OPEN SPACE)

TRACT T-69 (OPEN SPACE)

TRACT T-70 (OPEN SPACE)

TRACT T-71 (OPEN SPACE)

TRACT T-72 (OPEN SPACE)

TRACT T-73 (OPEN SPACE)

TRACT T-74 (OPEN SPACE)

TRACT T-75 (OPEN SPACE)

TRACT T-76 (OPEN SPACE)

TRACT T-77 (OPEN SPACE)

TRACT T-78 (OPEN SPACE)

TRACT T-79 (OPEN SPACE)

TRACT T-80 (OPEN SPACE)

TRACT T-81 (OPEN SPACE)

TRACT T-82 (OPEN SPACE)

TRACT T-83 (OPEN SPACE)

TRACT T-84 (OPEN SPACE)

TRACT T-85 (OPEN SPACE)

TRACT T-86 (OPEN SPACE)

TRACT T-87 (OPEN SPACE)

TRACT T-88 (OPEN SPACE)

TRACT T-89 (OPEN SPACE)

TRACT T-90 (OPEN SPACE)

TRACT T-91 (OPEN SPACE)

TRACT T-92 (OPEN SPACE)

TRACT T-93 (OPEN SPACE)

TRACT T-94 (OPEN SPACE)

TRACT T-95 (OPEN SPACE)

TRACT T-96 (OPEN SPACE)

TRACT T-97 (OPEN SPACE)

TRACT T-98 (OPEN SPACE)

TRACT T-99 (OPEN SPACE)

TRACT T-100 (OPEN SPACE)

UNPLANNED AREA

SECTION 33

SECTION 34

SECTION 35

SECTION 36

SECTION 37

SECTION 38

SECTION 39

SECTION 40

SECTION 41

SECTION 42

SECTION 43

SECTION 44

SECTION 45

SECTION 46

SECTION 47

SECTION 48

SECTION 49

SECTION 50

SECTION 51

SECTION 52

SECTION 53

SECTION 54

SECTION 55

SECTION 56

SECTION 57

SECTION 58

SECTION 59

SECTION 60

SECTION 61

SECTION 62

SECTION 63

SECTION 64

SECTION 65

SECTION 66

SECTION 67

SECTION 68

SECTION 69

SECTION 70

SECTION 71

SECTION 72

SECTION 73

SECTION 74

SECTION 75

SECTION 76

SECTION 77

SECTION 78

SECTION 79

SECTION 80

SECTION 81

SECTION 82

SECTION 83

SECTION 84

SECTION 85

SECTION 86

SECTION 87

SECTION 88

SECTION 89

SECTION 90

SECTION 91

SECTION 92

SECTION 93

SECTION 94

SECTION 95

SECTION 96

SECTION 97

SECTION 98

SECTION 99

SECTION 100

TOWNSHIP 4 SOUTH

TOWNSHIP 5 SOUTH

TOWNSHIP 6 SOUTH

TOWNSHIP 7 SOUTH

TOWNSHIP 8 SOUTH

TOWNSHIP 9 SOUTH

TOWNSHIP 10 SOUTH

TOWNSHIP 11 SOUTH

TOWNSHIP 12 SOUTH

TOWNSHIP 13 SOUTH

TOWNSHIP 14 SOUTH

TOWNSHIP 15 SOUTH

TOWNSHIP 16 SOUTH

TOWNSHIP 17 SOUTH

TOWNSHIP 18 SOUTH

TOWNSHIP 19 SOUTH

TOWNSHIP 20 SOUTH

TOWNSHIP 21 SOUTH

TOWNSHIP 22 SOUTH

TOWNSHIP 23 SOUTH

TOWNSHIP 24 SOUTH

TOWNSHIP 25 SOUTH

TOWNSHIP 26 SOUTH

TOWNSHIP 27 SOUTH

TOWNSHIP 28 SOUTH

TOWNSHIP 29 SOUTH

TOWNSHIP 30 SOUTH

TOWNSHIP 31 SOUTH

TOWNSHIP 32 SOUTH

TOWNSHIP 33 SOUTH

TOWNSHIP 34 SOUTH

TOWNSHIP 35 SOUTH

TOWNSHIP 36 SOUTH

TOWNSHIP 37 SOUTH

TOWNSHIP 38 SOUTH

TOWNSHIP 39 SOUTH

TOWNSHIP 40 SOUTH

TOWNSHIP 41 SOUTH

TOWNSHIP 42 SOUTH

TOWNSHIP 43 SOUTH

TOWNSHIP 44 SOUTH

TOWNSHIP 45 SOUTH

TOWNSHIP 46 SOUTH

TOWNSHIP 47 SOUTH

TOWNSHIP 48 SOUTH

TOWNSHIP 49 SOUTH

TOWNSHIP 50 SOUTH

TOWNSHIP 51 SOUTH

TOWNSHIP 52 SOUTH

TOWNSHIP 53 SOUTH

TOWNSHIP 54 SOUTH

TOWNSHIP 55 SOUTH

TOWNSHIP 56 SOUTH

TOWNSHIP 57 SOUTH

TOWNSHIP 58 SOUTH

TOWNSHIP 59 SOUTH

TOWNSHIP 60 SOUTH

TOWNSHIP 61 SOUTH

TOWNSHIP 62 SOUTH

TOWNSHIP 63 SOUTH

TOWNSHIP 64 SOUTH

TOWNSHIP 65 SOUTH

TOWNSHIP 66 SOUTH

TOWNSHIP 67 SOUTH

TOWNSHIP 68 SOUTH

TOWNSHIP 69 SOUTH

TOWNSHIP 70 SOUTH

TOWNSHIP 71 SOUTH

TOWNSHIP 72 SOUTH

TOWNSHIP 73 SOUTH

TOWNSHIP 74 SOUTH

TOWNSHIP 75 SOUTH

TOWNSHIP 76 SOUTH

TOWNSHIP 77 SOUTH

TOWNSHIP 78 SOUTH

TOWNSHIP 79 SOUTH

TOWNSHIP 80 SOUTH

TOWNSHIP 81 SOUTH

TOWNSHIP 82 SOUTH

TOWNSHIP 83 SOUTH

TOWNSHIP 84 SOUTH

TOWNSHIP 85 SOUTH

TOWNSHIP 86 SOUTH

TOWNSHIP 87 SOUTH

TOWNSHIP 88 SOUTH

TOWNSHIP 89 SOUTH

TOWNSHIP 90 SOUTH

TOWNSHIP 91 SOUTH

TOWNSHIP 92 SOUTH

TOWNSHIP 93 SOUTH

TOWNSHIP 94 SOUTH

TOWNSHIP 95 SOUTH

TOWNSHIP 96 SOUTH

TOWNSHIP 97 SOUTH

TOWNSHIP 98 SOUTH

TOWNSHIP 99 SOUTH

TOWNSHIP 100 SOUTH

RANGE 27 EAST

RANGE 28 EAST

RANGE 29 EAST

RANGE 30 EAST

RANGE 31 EAST

RANGE 32 EAST

RANGE 33 EAST

RANGE 34 EAST

RANGE 35 EAST

RANGE 36 EAST

RANGE 37 EAST

RANGE 38 EAST

RANGE 39 EAST

RANGE 40 EAST

RANGE 41 EAST

RANGE 42 EAST

RANGE 43 EAST

RANGE 44 EAST

RANGE 45 EAST

RANGE 46 EAST

RANGE 47 EAST

RANGE 48 EAST

RANGE 49 EAST

RANGE 50 EAST

RANGE 51 EAST

RANGE 52 EAST

RANGE 53 EAST

RANGE 54 EAST

RANGE 55 EAST

RANGE 56 EAST

RANGE 57 EAST

RANGE 58 EAST

RANGE 59 EAST

RANGE 60 EAST

RANGE 61 EAST

RANGE 62 EAST

RANGE 63 EAST

RANGE 64 EAST

RANGE 65 EAST

RANGE 66 EAST

RANGE 67 EAST

RANGE 68 EAST

RANGE 69 EAST

RANGE 70 EAST

RANGE 71 EAST

RANGE 72 EAST

RANGE 73 EAST

RANGE 74 EAST

RANGE 75 EAST

RANGE 76 EAST

RANGE 77 EAST

RANGE 78 EAST

RANGE 79 EAST

RANGE 80 EAST

RANGE 81 EAST

RANGE 82 EAST

RANGE 83 EAST

RANGE 84 EAST

RANGE 85 EAST

RANGE 86 EAST

RANGE 87 EAST

RANGE 88 EAST

RANGE 89 EAST

RANGE 90 EAST

RANGE 91 EAST

RANGE 92 EAST

RANGE 93 EAST

RANGE 94 EAST

RANGE 95 EAST

RANGE 96 EAST

RANGE 97 EAST

RANGE 98 EAST

RANGE 99 EAST

RANGE 100 EAST

SOUTHERLY CORNER OF JULLINGTON CREEK PLANTATION PARCEL 55 PHASE 1

SOUTHERLY BOUNDARY OF JULLINGTON CREEK PLANTATION PARCEL 55 PHASE 1

PARCELS 55 PHASE 1

PARCELS 55 PHASE 2

PARCELS 55 PHASE 3

RECORDED IN G.R.V. 1131, PAGE 630