

RESOLUTION NO. 2002- 271
RESOLUTION OF THE BOARD OF COUNTY COMMISSIONERS
OF ST. JOHNS COUNTY, FLORIDA APPROVING A SUBDIVISION
PLAT FOR SAINT JOHNS SIX MILE CREEK NORTH UNIT 1,
PARCEL 4, TRACT 4A

WHEREAS, SJ Land Associates, LLC, a Delaware Limited Liability Company has applied to
The Board of County Commissioners of St. Johns County, Florida for approval to record a
subdivision plat known as Saint Johns Six Mile Creek North Unit 3, Parcel 21

NOW, THEREFORE BE IT RESOLVED BY THE BOARD OF COUNTY
COMMISSIONERS OF ST. JOHNS COUNTY, FLORIDA, as follows:

Section 1. The above-described subdivision plat and its dedicated areas depicted thereon are
conditionally approved and accepted by the Board of County Commissioners of St. Johns County,
Florida subject to Sections 2,4 and 5.

Section 2. A Construction Bond has been filed with the Clerk of Court in the amount of
\$629,696.69.

Section 3. No Maintenance Bond will be required.

Section 4. The approval and acceptance described in Section 1 shall not take effect until the Clerk
has received a title opinion, certificate, or policy pertaining to the real property that is the subject of
the aforementioned subdivision plat which opinion, certificate or policy is in a form acceptable to the
County Attorney or Assistant County Attorney.

Section 5. The approval and acceptance described in Section 1 shall not take effect until the plat has been signed by each of the following departments, person or offices:

- a) Chairman or Vice-Chairman of the Board of County Commissioners of St. Johns County, Florida;
- b) Office of the County Attorney;
- c) County Planning and Zoning Department;
- d) Office of the County Surveyor; and
- e) Clerk of Courts.

The Clerk shall not sign or accept the plat for recording until it has been signed by each of the above persons or entities described in a) through d) above. If the plat is not signed and accepted by the Clerk for recording within 14 days from the date hereof, then the above-described conditional approval shall automatically terminate. If the plat is signed by the Clerk on or before such time, the conditions described herein shall be deemed to have been met.

ADOPTED by the Board of County Commissioners of St. Johns County, Florida, this 17th day of December, 2002.

BOARD OF COUNTY COMMISSIONERS
OF ST. JOHNS COUNTY, FLORIDA

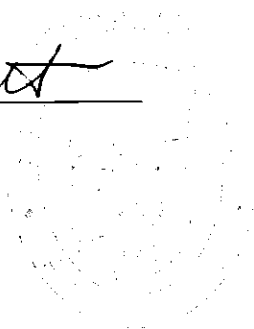
BY: James E. Bryant

James E. Bryant, Its Chair

ATTEST: Cheryl Strickland

Cheryl Strickland

Deputy Clerk



SAINT JOHNS SIX MILE CREEK NORTH, UNIT 1, PARCEL 4, TRACT 4A

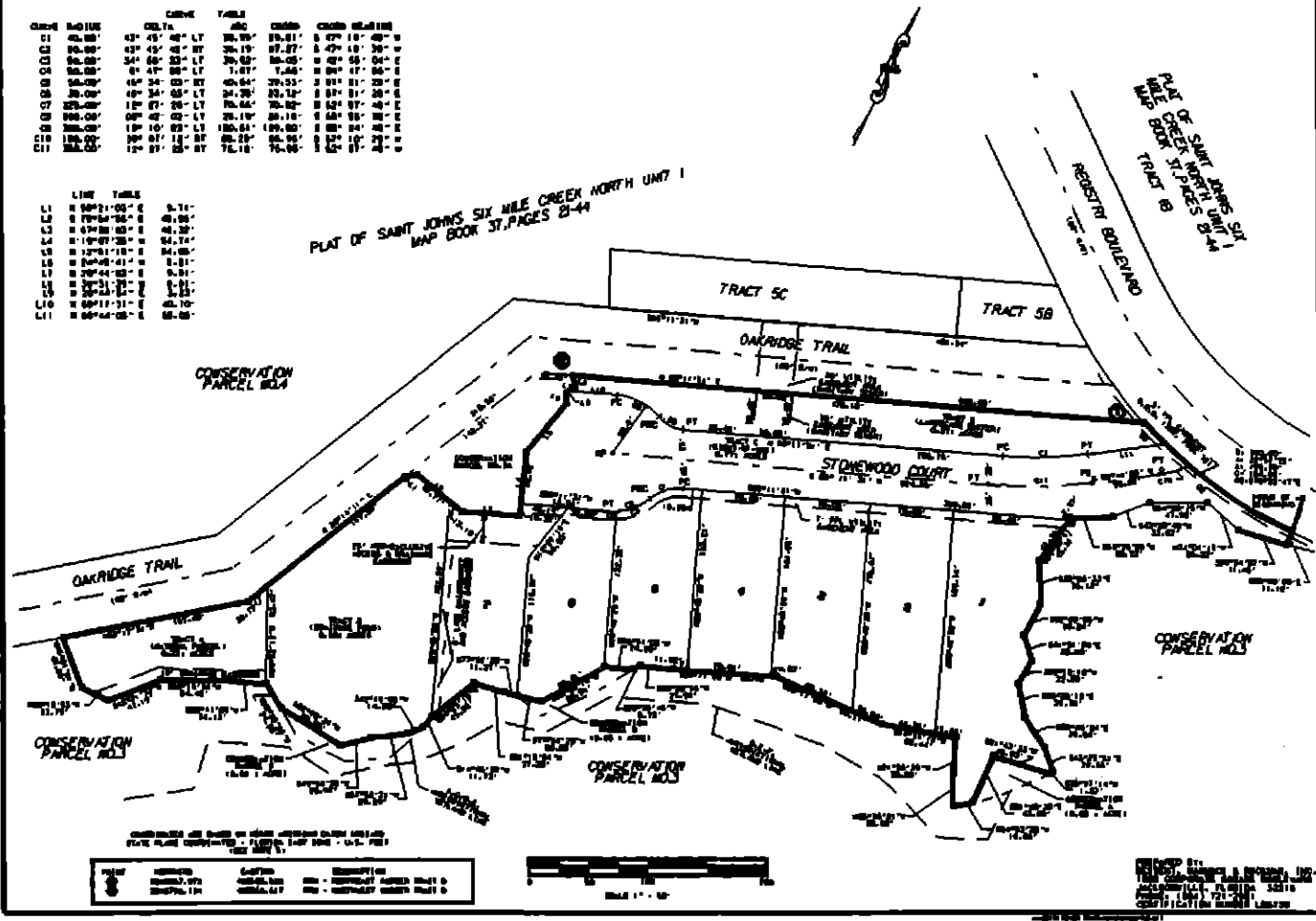
BEING A REPLAT OF PARCEL 4, TRACT 4A, SAINT JOHNS SIX MILE CREEK NORTH UNIT 1,
AS RECORDED IN MAP BOOK 37, PAGES 21 THROUGH 44, ALSO BEING A PART OF THE ANTONIO HUERTAS GRANT,
SECTION 38, TOWNSHIP 8 SOUTH, RANGE 28 EAST, ST. JOHNS COUNTY, FLORIDA

MAP BOOK 37 PAGE 21
Sheet 1 of 1

LINE	BEING	DELTA	ARC	CROSS	CROSS
01	45.00'	0° 45' 42" E	36.79'	15.51'	0° 15' 42" W
02	30.00'	0° 45' 42" E	36.79'	15.51'	0° 15' 42" W
03	30.00'	0° 45' 42" E	36.79'	15.51'	0° 15' 42" W
04	30.00'	0° 45' 42" E	36.79'	15.51'	0° 15' 42" W
05	30.00'	0° 45' 42" E	36.79'	15.51'	0° 15' 42" W
06	30.00'	0° 45' 42" E	36.79'	15.51'	0° 15' 42" W
07	30.00'	0° 45' 42" E	36.79'	15.51'	0° 15' 42" W
08	30.00'	0° 45' 42" E	36.79'	15.51'	0° 15' 42" W
09	30.00'	0° 45' 42" E	36.79'	15.51'	0° 15' 42" W
10	30.00'	0° 45' 42" E	36.79'	15.51'	0° 15' 42" W
11	30.00'	0° 45' 42" E	36.79'	15.51'	0° 15' 42" W
12	30.00'	0° 45' 42" E	36.79'	15.51'	0° 15' 42" W
13	30.00'	0° 45' 42" E	36.79'	15.51'	0° 15' 42" W
14	30.00'	0° 45' 42" E	36.79'	15.51'	0° 15' 42" W
15	30.00'	0° 45' 42" E	36.79'	15.51'	0° 15' 42" W
16	30.00'	0° 45' 42" E	36.79'	15.51'	0° 15' 42" W
17	30.00'	0° 45' 42" E	36.79'	15.51'	0° 15' 42" W
18	30.00'	0° 45' 42" E	36.79'	15.51'	0° 15' 42" W
19	30.00'	0° 45' 42" E	36.79'	15.51'	0° 15' 42" W
20	30.00'	0° 45' 42" E	36.79'	15.51'	0° 15' 42" W
21	30.00'	0° 45' 42" E	36.79'	15.51'	0° 15' 42" W

LINE	BEING	DELTA
L1	0° 00' 00" E	0.00'
L2	0° 00' 00" E	0.00'
L3	0° 00' 00" E	0.00'
L4	0° 00' 00" E	0.00'
L5	0° 00' 00" E	0.00'
L6	0° 00' 00" E	0.00'
L7	0° 00' 00" E	0.00'
L8	0° 00' 00" E	0.00'
L9	0° 00' 00" E	0.00'
L10	0° 00' 00" E	0.00'
L11	0° 00' 00" E	0.00'

PLAT OF SAINT JOHNS SIX MILE CREEK NORTH UNIT 1
MAP BOOK 37, PAGES 21-44



CONTAINED ARE BASED ON STATE PLANNING COMMISSION
STATE PLANNING COMMISSION - PLANNING MAP 2004 - U.S. 90A

SYMBOL	DESCRIPTION
(Symbol)	BOUNDARY
(Symbol)	CONSERVATION
(Symbol)	ROAD
(Symbol)	TRAIL



PLAT 811
ST. JOHNS COUNTY, FLORIDA
PLANNING MAP 2004 - U.S. 90A
DATE: 04/11/04
BY: [Signature]