

RESOLUTION NO. 2002- 276  
RESOLUTION OF THE BOARD OF COUNTY  
COMMISSIONERS OF ST. JOHNS COUNTY, FLORIDA  
APPROVING A SUBDIVISION PLAT FOR PONTE VEDRA SHORES  
WEST LOT 31 REPLAT

WHEREAS, AL RONNIE HARE AND LINDA M. HARE, OWNERS, have applied to the Board of County Commissioners of St. Johns County, Florida for approval to record a subdivision plat known as PONTE VEDRA SDHORES WEST LOT 31 REPLAT.

NOW, THEREFORE BE IT RESOLVED BY THE BOARD OF COUNTY COMMISSIONERS OF ST. JOHNS COUNTY, FLORIDA, as follows:

Section 1. The above-described subdivision plat and its dedicated areas depicted thereon are conditionally approved and accepted by the Board of County Commissioners of St. Johns County, Florida subject to Sections 2, 3, 4, and 5.

Section 2. No Construction Bond is required.

Section 3. A Maintenance Bond will not be required.

Section 4. The approval and acceptance described in Section 1 shall not take effect until the Clerk has received a title opinion, certificate, or policy pertaining to the real property that is the subject of the aforementioned subdivision plat which opinion, certificate or policy is in a form acceptable to the County Attorney or Assistant County Attorney.

Section 5. The approval and acceptance described in Section 1 shall not take effect until the necessary permits as approved by the DEP ( Department of Environmental Protection) are submitted to the St. Johns County Development Review Department.

Section 6. The approval and acceptance described in Section 1 shall not take effect until the plat has been signed by each of the following departments, person or offices:

- a) Chairman or Vice-Chairman of the Board of County Commissioners of St. Johns County, Florida;
- b) Office of the County Attorney;
- c) County Planning and Zoning Department;
- d) Office of the County Surveyor; and
- e) Clerk of Courts.

The Clerk shall not sign or accept the Plat for recording until it has been signed by each of the above persons or entities described in a) through d) above. If the plat is not signed and accepted by the Clerk for recording within 14 days from the date hereof, then the above-described conditional approval shall automatically terminate. If the plat is signed by the Clerk on or before such time, the conditions described herein shall be deemed to have been met.

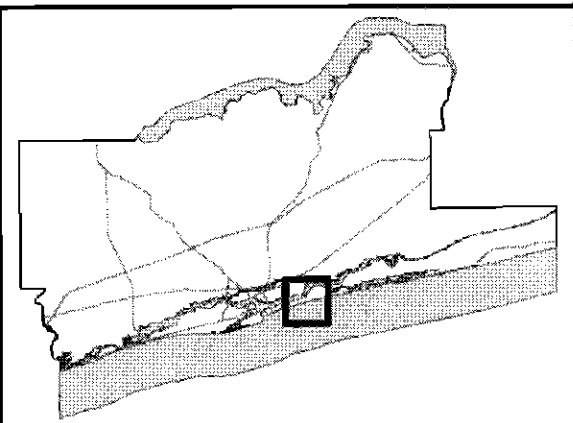
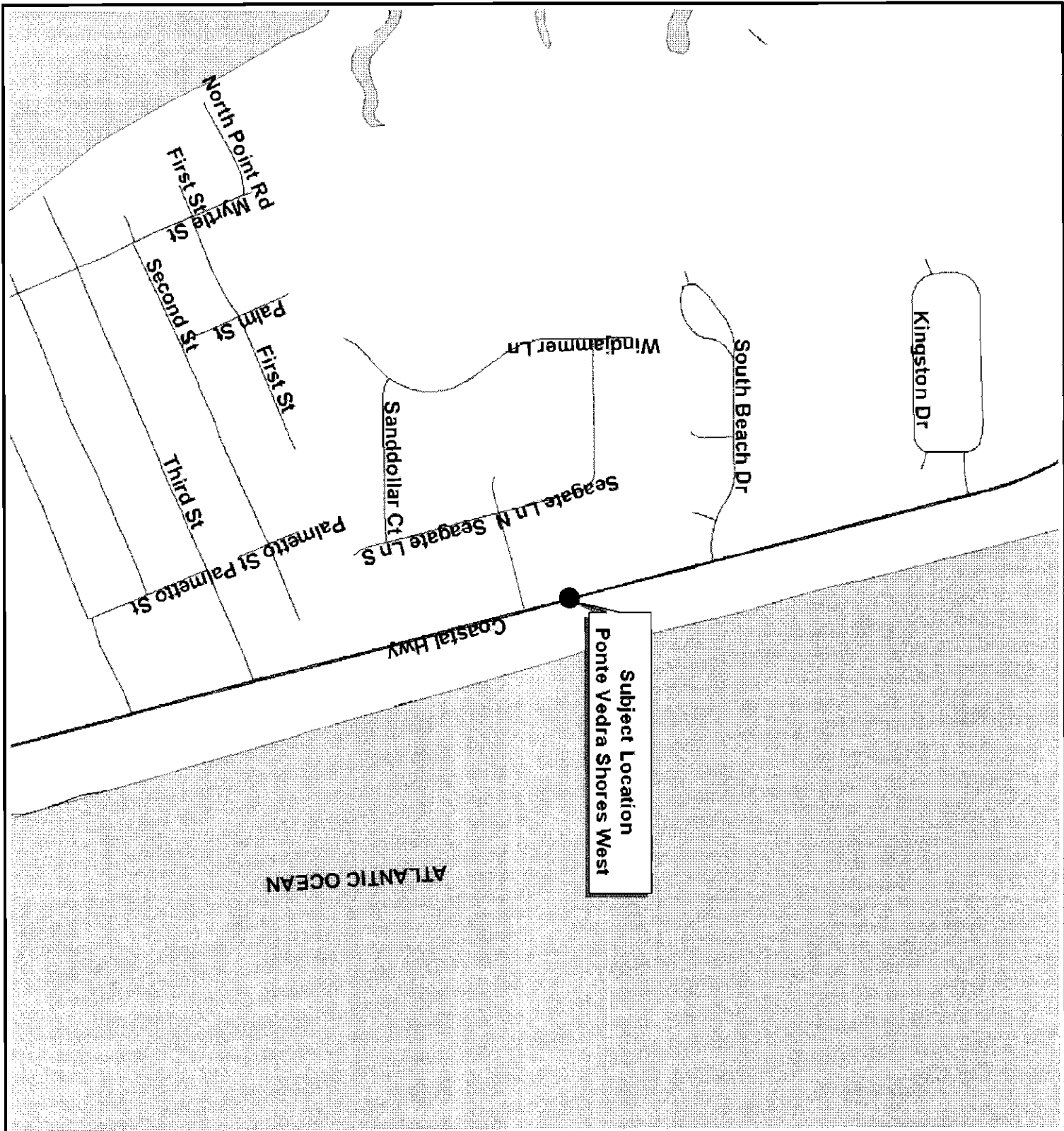
ADOPTED by the Board of County Commissioners of St. Johns County, Florida, this 17 day of December, 2002.

BOARD OF COUNTY COMMISSIONERS  
OF ST. JOHNS COUNTY, FLORIDA

BY: James E. Bryant  
James E. Bryant, Its Chair

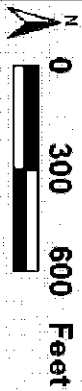
ATTEST: Cheryl Strickland

Cheryl Strickland  
Deputy Clerk



**Project**


**Location Map**

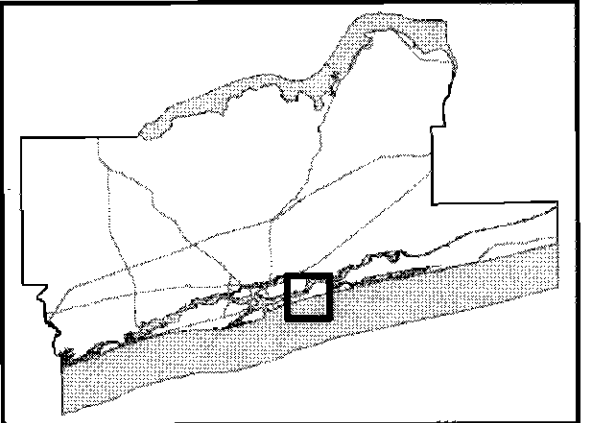
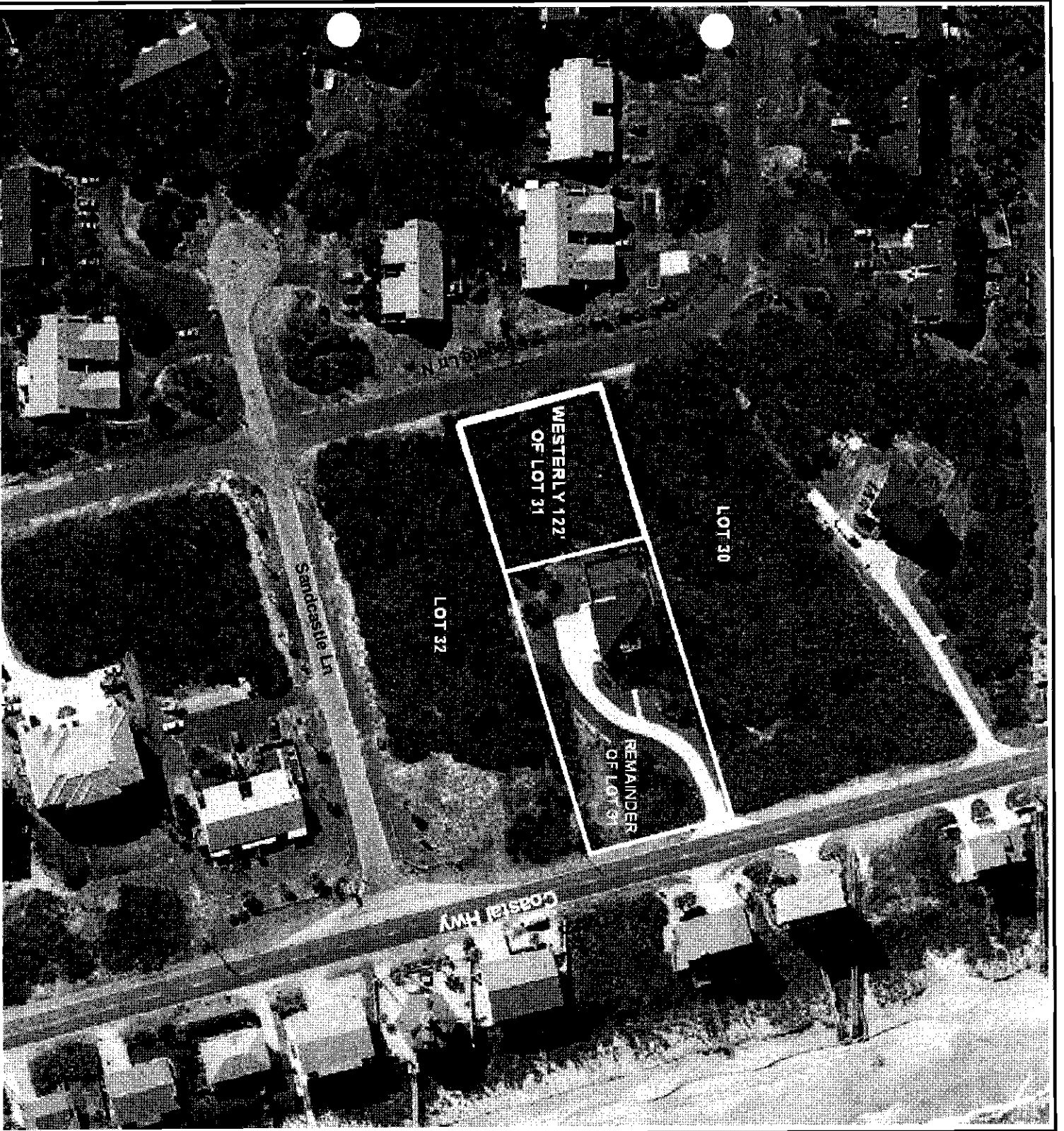


Map Prepared: Nov 20, 2002  
\*Depicts General Project Boundary

**AL AND HARE  
PLAT  
.96 ACRES**

FILE: PONTE VEDRA SHORES WEST  
St. Johns County  
Growth Mgmt. Svcs.  
Zoning Division





# 1999 Aerial Photography



Map Prepared: Nov 20, 2002  
 \*Depicts General Project Boundary

**AL AND HARE  
 PLAT  
 .96 ACRES**

FILE: PONTE VEDRA SHORES WEST  
 St. Johns County  
 Growth Mgmt. Svcs.  
 Zoning Division



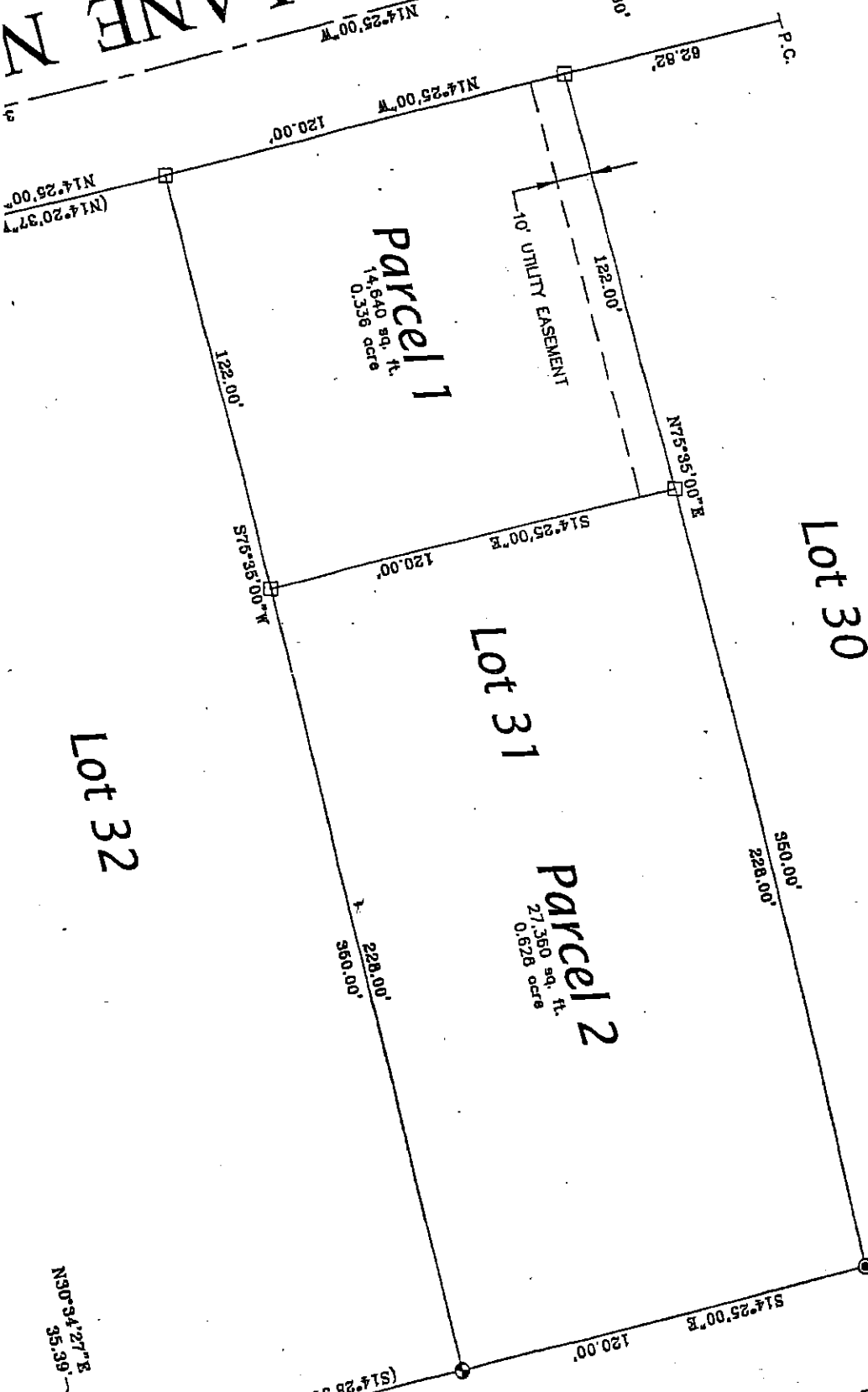
# Ponte Vedra Shores West - Lot 31 Replat

A REPLAT OF LOT 31, PONTE VEDRA SHORES WEST, ACCORDING TO THE PLAT THEREOF AS RECORDED IN MAP BOOK 14, PAGES 34 AND 35, SITUATED IN SECTION 29, TOWNSHIP 6 SOUTH, RANGE 30 EAST, ST. JOHNS COUNTY, FLORIDA.

RINGS AS SHOWN HEREON HAVE  
N BASED FROM A BEARING OF  
35°00'E AS SHOWN FOR THE  
THERLY LINE OF LOT 31.



SEAGATE LANE N  
(60' R/W)



N30°34'27"E  
95.39'

