

RESOLUTION NO. 2003- 189  
RESOLUTION OF THE BOARD OF COUNTY  
COMMISSIONERS OF ST. JOHNS COUNTY, FLORIDA  
APPROVING A SUBDIVISION PLAT FOR MARSHALL CREEK  
DRI MUB -2

WHEREAS, MARSHALL CREEK, LTD., A FLORIDA LIMITED PARTNERSHIP, AND GENESIS, LTD., A FLORIDA LIMITED PARTNERSHIP, has applied to the Board of County Commissioners of St. Johns County, Florida for approval to record a subdivision plat known as MARSHALL CREEK DRI MUB -2.

NOW, THEREFORE BE IT RESOLVED BY THE BOARD OF COUNTY COMMISSIONERS OF ST. JOHNS COUNTY, FLORIDA, as follows:

Section 1. The above-described subdivision plat and its dedicated areas depicted thereon are conditionally approved and accepted by the Board of County Commissioners of St. Johns County, Florida subject to Sections 2, 3, 4, and 5.

Section 2. A Construction Bond in the amount of \$563,500.00 which represents the funds required to complete the road, has been filed with the Clerks' office.

Section 3. A Maintenance Bond will not be required.

Section 4. The approval and acceptance described in Section 1 shall not take effect until the Clerk has received a title opinion, certificate, or policy pertaining to the real property that is the subject of the a forenamed subdivision plat which opinion, certificate or policy is in a form acceptable to the County Attorney or Assistant County Attorney.

Section 5. The approval and acceptance described in Section 1 shall not take effect until the plat has been signed by each of the following departments, person or offices:

- a) Chairman or Vice-Chairman of the Board of County Commissioners of St. Johns County, Florida;
- b) Office of the County Attorney;
- c) County Planning and Zoning Department;
- d) Office of the County Surveyor; and
- e) Clerk of Courts.

The Clerk shall not sign or accept the Plat for recording until it has been signed by each of the above persons or entities described in a) through d) above. If the plat is not signed and accepted by the Clerk for recording within 14 days from the date hereof, then the above-described conditional approval shall automatically terminate. If the plat is signed by the Clerk on or before such time, the conditions described herein shall be deemed to have been met.

ADOPTED by the Board of County Commissioners of St. Johns County, Florida, this 7th day of October, 2003.

BOARD OF COUNTY COMMISSIONERS  
OF ST. JOHNS COUNTY, FLORIDA

BY: James E. Bryant  
James E. Bryant, Its Chair

ATTEST: Cheryl Strickland

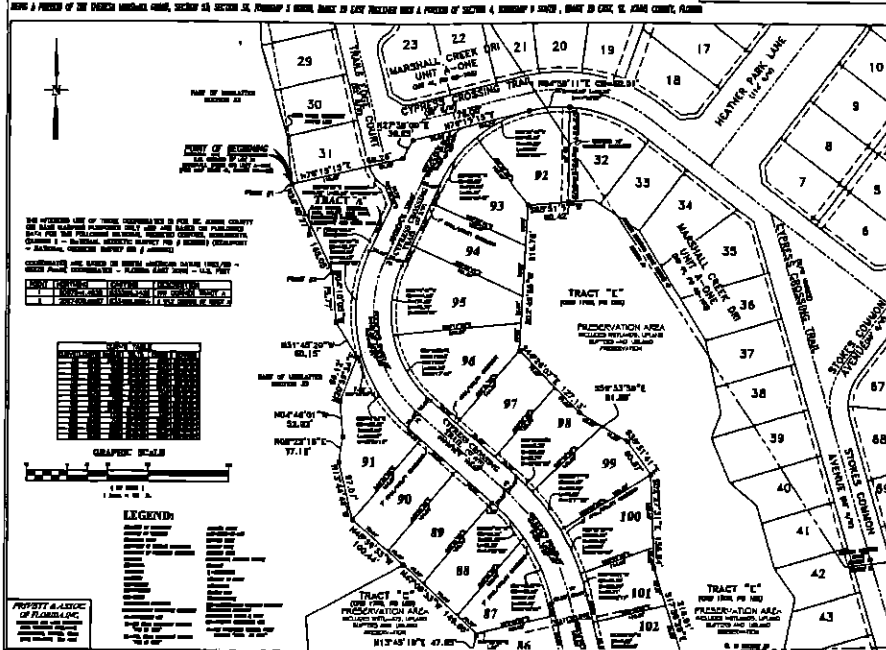
Patricia DeLester  
Deputy Clerk

RENDITION DATE 10-10-03



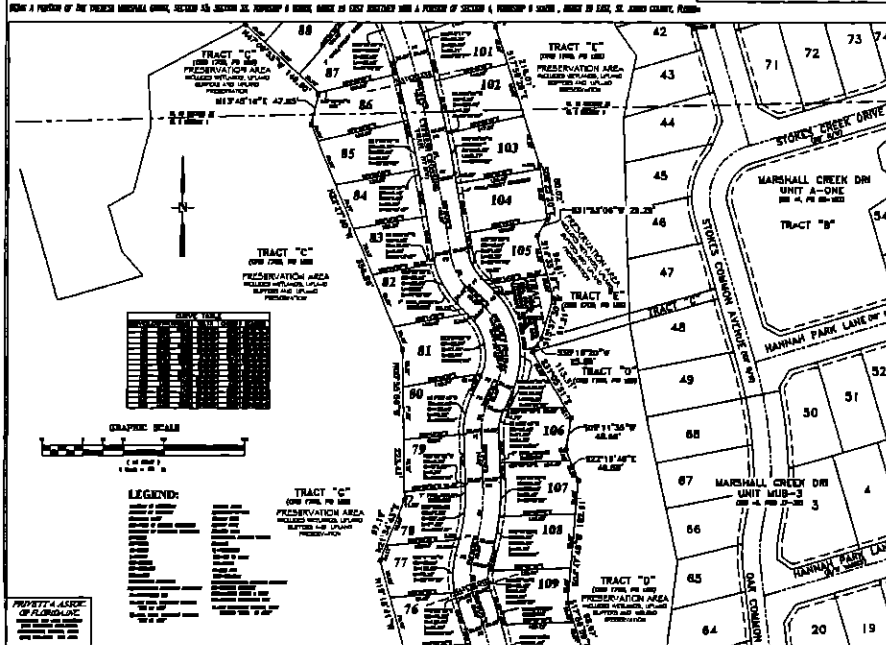
# Marshall Creek DRI Unit MUB-2

MAP BOOK PAGE  
SHEET 2 OF 4 SHEETS



# Marshall Creek DRI Unit MUB-2

MAP BOOK PAGE  
SHEET 3 OF 4 SHEETS



# Marshall Creek DRI Unit MUB-2

MAP BOOK PAGE  
SHEET 4 OF 4 SHEETS

