

RESOLUTION NO. 2003- 191  
RESOLUTION OF THE BOARD OF COUNTY  
COMMISSIONERS OF ST. JOHNS COUNTY, FLORIDA  
APPROVING A SUBDIVISION PLAT FOR WALDEN CHASE  
PHASE I - UNIT FOUR

WHEREAS, ESPANITA, L.L.C., A FLORIDA LIMITED LIABILITY COMPANY, as owner, has applied to the Board of County Commissioners of St. Johns County, Florida for approval to record a subdivision plat known as WALDEN CHASE PHASE I – UNIT FOUR

NOW, THEREFORE BE IT RESOLVED BY THE BOARD OF COUNTY COMMISSIONERS OF ST. JOHNS COUNTY, FLORIDA, as follows:

Section 1. The above-described subdivision plat and its dedicated areas depicted thereon are conditionally approved and accepted by the Board of County Commissioners of St. Johns County, Florida subject to Sections 2, 3, 4, and 5.

Section 2. No Construction Bond will be required.

Section 3. No Maintenance Bond will be required.

Section 4. The approval and acceptance described in Section 1 shall not take effect until the Clerk has received a title opinion, certificate, or policy pertaining to the real property that is the subject of the aforementioned subdivision plat which opinion, certificate or policy is in a form acceptable to the County Attorney or Assistant County Attorney.

Section 5. The approval and acceptance described in Section 1 shall not take effect until the plat has been signed by each of the following departments, person or offices:

- a) Chairman or Vice-Chairman of the Board of County Commissioners of St. Johns County, Florida;
- b) Office of the County Attorney;
- c) County Planning and Zoning Department;

- d) Office of the County Surveyor; and
- e) Clerk of Courts.

The Clerk shall not sign or accept the Plat for recording until it has been signed by each of the above persons or entities described in a) through d) above. If the plat is not signed and accepted by the Clerk for recording within 14 days from the date hereof, then the above-described conditional approval shall automatically terminate. If the plat is signed by the Clerk on or before such time, the conditions described herein shall be deemed to have been met.

ADOPTED by the Board of County Commissioners of St. Johns County, Florida, this 7th day of October, 2003.

BOARD OF COUNTY COMMISSIONERS  
OF ST. JOHNS COUNTY, FLORIDA

BY: James E. Bryant  
James E. Bryant, Its Chair

ATTEST: Cheryl Strickland

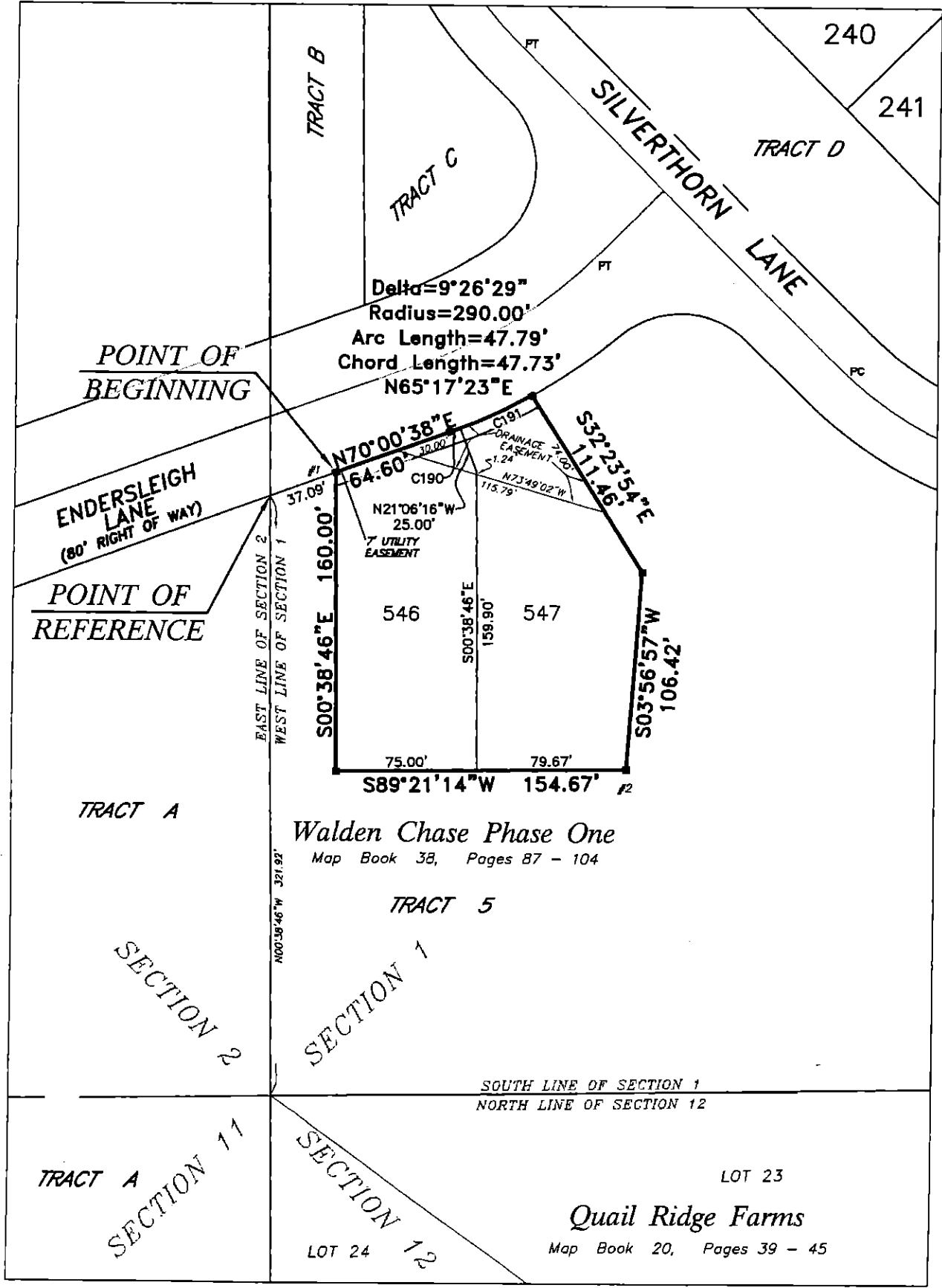
Cheryl Strickland  
Deputy Clerk

RENDITION DATE 10-10-03



# Walden Chase Phase I

A REPLAT OF A PART OF TRACT 5, WALDEN CHASE PHASE ONE  
 PAGES 87 THROUGH 104 OF THE PUBLIC RECORDS OF ST.  
 LYING IN SECTION 1, TOWNSHIP 5 SOUTH, RANGE 28 EAST, :



Walden Chase Phase One  
 Map Book 38, Pages 87 - 104

TRACT 5

LOT 23  
 Quail Ridge Farms  
 Map Book 20, Pages 39 - 45

NOTICE: THIS PLAT, AS RECORDED IN ITS GRAPHIC FORM, IS THE OFFICIAL DEPICTION OF THE SUBDIVIDED LANDS DESCRIBED HEREIN AND WILL IN NO CIRCUMSTANCES BE SUPPLANTED IN AUTHORITY BY ANY OTHER GRAPHIC OR DIGITAL FORM OF THE PLAT. THERE MAY