

③
6584

RESOLUTION NO. 2003- 32

A RESOLUTION BY THE BOARD OF COUNTY COMMISSIONERS OF ST. JOHNS COUNTY, FLORIDA, AUTHORIZING THE CLERK OF COURTS TO FILE AN AMENDED SURVEY MAP OF RIVERDALE PARK CLAIMING A VESTED INTEREST IN ST. JOHNS COUNTY IN THE PARK DESCRIBED IN THIS AMENDED SURVEY BY PRESCRIPTIVE RIGHTS OF THE PUBLIC PER CASE LAW DOWNING VS. BIRD AND CITY OF HOMESTEAD 100 SO.2d 57 (FLA. DIST. CT. APP.-1958)

WHEREAS, Resolution No. 2002-84 authorized the filing of a survey map of Riverdale Park claiming a vested interest in St. Johns County by prescriptive rights of the public per case law Downing vs. Bird and City of Homestead 100 So. 2d 57 (Fla. Dist. Ct. App.-1958); and

WHEREAS, it has come to County's attention that the survey map filed with said Resolution did not include a portion of the park that has been continuously used and maintained by St. Johns County; and

WHEREAS, the survey map has been amended to include that portion of the park and is attached hereto as Exhibit "A", incorporated by reference and made a part hereof; and

WHEREAS, by virtue of filing the amended survey map the boundaries of the park will be vested in St. Johns County by prescriptive rights of the public.

NOW, THEREFORE BE IT RESOLVED BY THE BOARD OF COUNTY COMMISSIONERS OF ST. JOHNS COUNTY, FLORIDA, as follows:

Section 1. The above recitals are incorporated by reference into the body of this Resolution and such recitals are adopted as findings of fact.

Section 2. The Chairman of the Board of County Commissioners and the Clerk of the Courts are hereby authorized to file the attached amended survey map of Riverdale Park in the Public records of St. Johns County, Florida.

Section 3. The Clerk is instructed to record this Resolution in the Public Records of St. Johns County, Florida

*Inset - P. Degraide
BCC Secty*

Public Records of
St. Johns County, FL
Clerk# 03-012164
O.R. 1902 PG 820
11:36AM 02/24/2003
REC \$13.00 SUR \$2.00

PASSED AND ADOPTED, this 18th day of February, 2003.

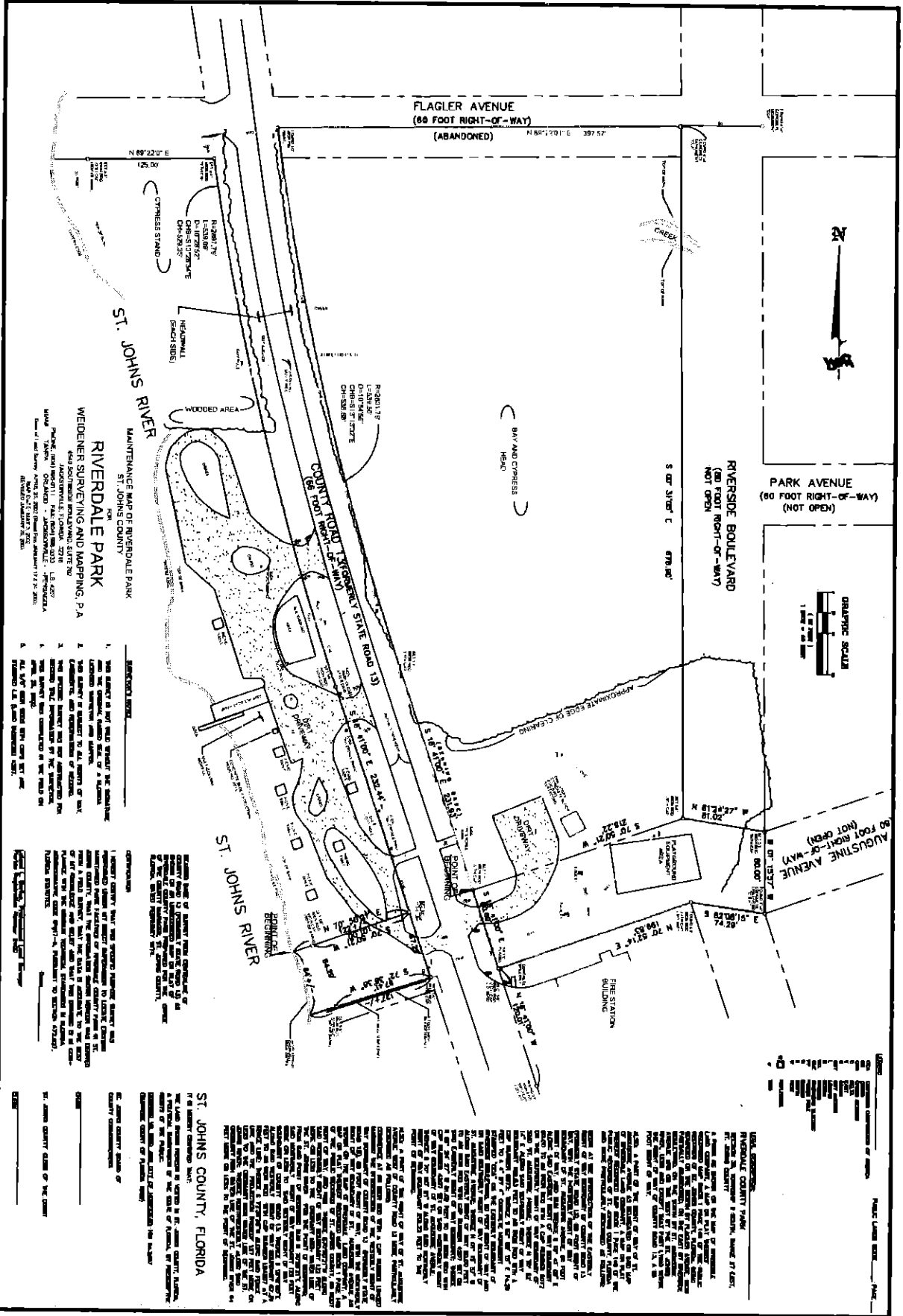
**BOARD OF COUNTY COMMISSIONERS
ST. JOHNS COUNTY, FLORIDA**

By: *James E. Bryant*
James E. Bryant, Chairman

ATTEST: Cheryl Strickland, Clerk

By: *Patricia DeGrande*
Deputy Clerk

RENDITION DATE 02-18-03



ST. JOHNS RIVER
 MAINTENANCE MAP OF RIVERDALE PARK
 ST. JOHNS COUNTY
RIVERDALE PARK
 WEIDENR SURVEYING AND MAPPING, P.A.
 4501 JACOBSONVILLE TOWNCH, 32716
 PHONE: (904) 861-1111 FAX: (904) 861-0222 U.S. GEOLOGICAL SURVEY
 MAP OF THE RIVERDALE PARK, ST. JOHNS COUNTY, FLORIDA
 DATE: 11/17/2005
 DRAWN BY: J. L. WEAVER

- LEGEND**
1. THE SURVEY IS NOT TO BE USED TO ESTABLISH THE BOUNDARIES OF ANY LAND OR INTEREST THEREIN.
 2. THE SURVEY IS NOT TO BE USED TO ESTABLISH THE BOUNDARIES OF ANY LAND OR INTEREST THEREIN.
 3. THE SURVEY IS NOT TO BE USED TO ESTABLISH THE BOUNDARIES OF ANY LAND OR INTEREST THEREIN.
 4. THE SURVEY IS NOT TO BE USED TO ESTABLISH THE BOUNDARIES OF ANY LAND OR INTEREST THEREIN.
 5. THE SURVEY IS NOT TO BE USED TO ESTABLISH THE BOUNDARIES OF ANY LAND OR INTEREST THEREIN.

NOTICE

THIS MAP IS A MAINTENANCE MAP OF RIVERDALE PARK, ST. JOHNS COUNTY, FLORIDA. IT IS NOT TO BE USED TO ESTABLISH THE BOUNDARIES OF ANY LAND OR INTEREST THEREIN. THE SURVEY IS NOT TO BE USED TO ESTABLISH THE BOUNDARIES OF ANY LAND OR INTEREST THEREIN. THE SURVEY IS NOT TO BE USED TO ESTABLISH THE BOUNDARIES OF ANY LAND OR INTEREST THEREIN.

ST. JOHNS COUNTY, FLORIDA

WEIDENR SURVEYING AND MAPPING, P.A.
 4501 JACOBSONVILLE TOWNCH, 32716
 PHONE: (904) 861-1111 FAX: (904) 861-0222 U.S. GEOLOGICAL SURVEY
 MAP OF THE RIVERDALE PARK, ST. JOHNS COUNTY, FLORIDA
 DATE: 11/17/2005
 DRAWN BY: J. L. WEAVER