

RESOLUTION NO. 2004- 221
RESOLUTION OF THE BOARD OF COUNTY
COMMISSIONERS OF ST. JOHNS COUNTY, FLORIDA
APPROVING A SUBDIVISION PLAT FOR PRAIRIE LAKES PHASE 1

WHEREAS, AMERICAN INVESTMENT ASSOCIATES, INC., A FLORIDA CORPORATION, AS OWNER, has applied to the Board of County Commissioners of St. Johns County, Florida for approval to record a subdivision plat known as PRAIRIE LAKES PHASE 1.

NOW, THEREFORE BE IT RESOLVED BY THE BOARD OF COUNTY COMMISSIONERS OF ST. JOHNS COUNTY, FLORIDA, as follows:

Section 1. The above-described subdivision plat and its dedicated areas depicted thereon are conditionally approved and accepted by the Board of County Commissioners of St. Johns County, Florida subject to Sections 2, 3, 4, and 5.

Section 2. A Cashier's check has been submitted to the Clerk of Courts' office in the amount of \$103,894.58.

Section 3. A Maintenance Bond will not be required.

Section 4. The approval and acceptance described in Section 1 shall not take effect until the Clerk has received a title opinion, certificate, or policy pertaining to the real property that is the subject of the a forenamed subdivision plat which opinion, certificate or policy is in a form acceptable to the County Attorney or Assistant County Attorney.

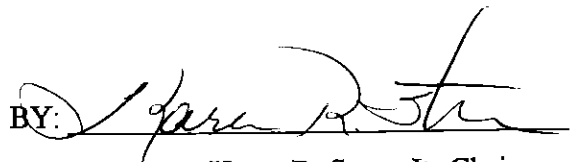
Section 5. The approval and acceptance described in Section 1 shall not take effect until the plat has been signed by each of the following departments, person or offices:

- a) Chairman or Vice-Chairman of the Board of County Commissioners of St. Johns County, Florida;
- b) Office of the County Attorney;
- c) County Planning and Zoning Department;
- d) Office of the County Surveyor; and
- e) Clerk of Courts.

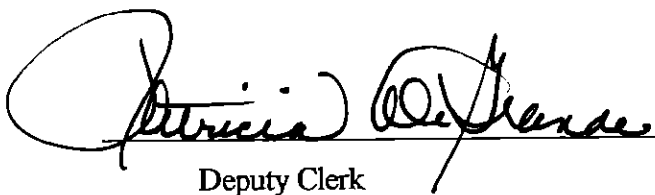
The Clerk shall not sign or accept the Plat for recording until it has been signed by each of the above persons or entities described in a) through d) above. If the plat is not signed and accepted by the Clerk for recording within 14 days from the date hereof, then the above-described conditional approval shall automatically terminate. If the plat is signed by the Clerk on or before such time, the conditions described herein shall be deemed to have been met.

ADOPTED by the Board of County Commissioners of St. Johns County, Florida, this 25 day of August, 2004.

BOARD OF COUNTY COMMISSIONERS
OF ST. JOHNS COUNTY, FLORIDA

BY: 
Karen R. Stern, Its Chair

ATTEST: Cheryl Strickland


Deputy Clerk



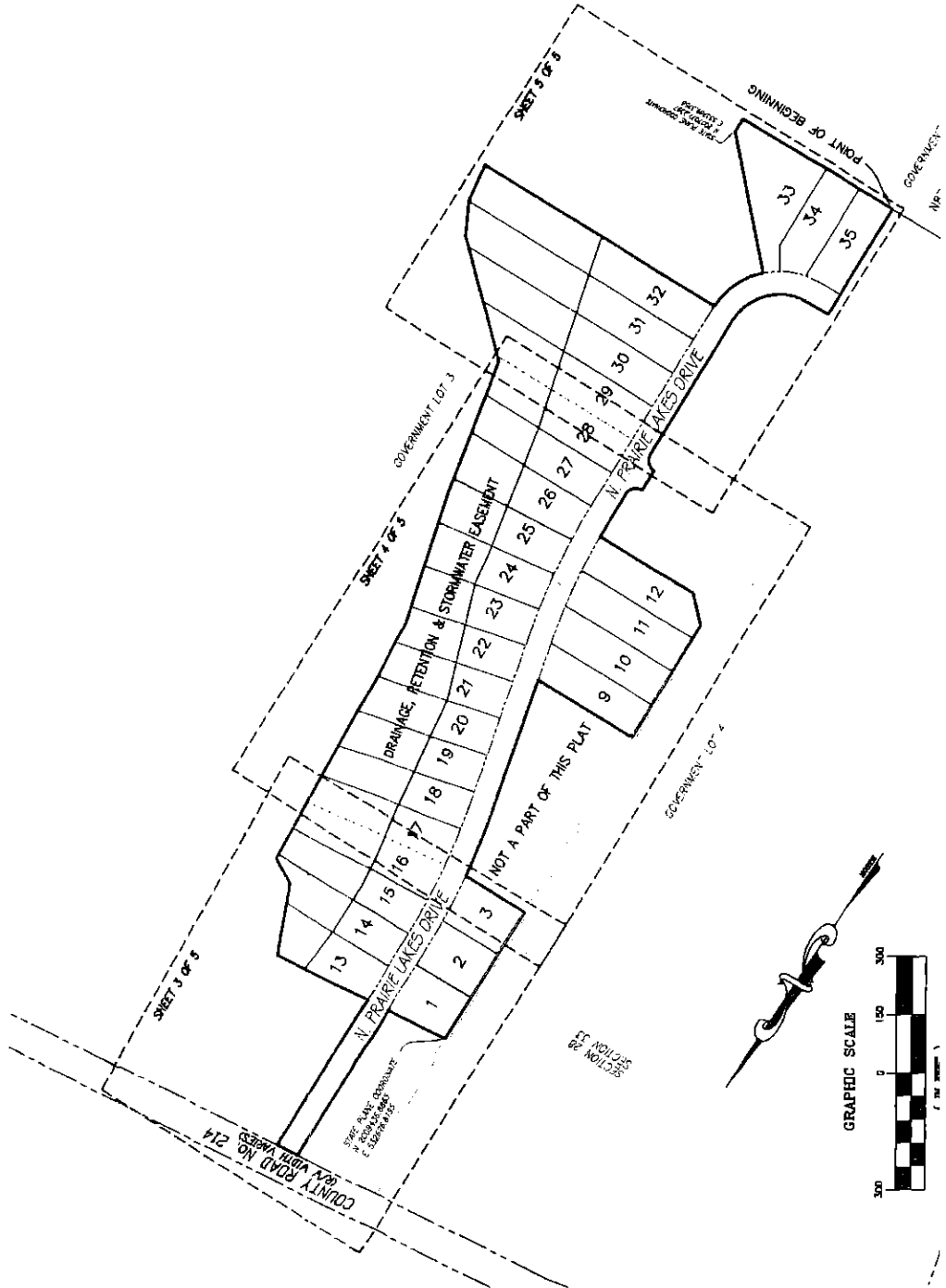
RENDITION DATE 8-27-04

PRAIRIE LAKES PHASE 1

A PARCEL OF LAND LYING IN SECTIONS 28 AND 33, TOWNSHIP 7 SOUTH, RANGE 29 EAST, ST. JOHNS COUNTY, FLORIDA.

- GENERAL NOTE:
- 1) THE BEARINGS & DISTANCES ARE AS SHOWN ON THE ORIGINAL SURVEY RECORDS.
 - 2) SECTION LINES ARE SHOWN BY DASHED LINES.
 - 3) NOTICE: THIS SURVEY IS A REVISION OF THE SURVEY OF THE LANDS DESCRIBED GRAPHIC OR DIGITALLY ON THIS PLAN THAT WAS MADE BY THE SURVEYOR IN 1962.
 - 4) LOT NUMBERS ARE SHOWN AS INDICATED.
 - 5) STATE PLANE COORDINATE SYSTEM, FLORIDA 83 CONTROL UNLESS OTHERWISE NOTED.
- DES
ST. J.
ST. J.
ALL DISTANCE.

KEY MAP (NOT TO SCALE)



(CHANGED)