

RESOLUTION NO. 2004- 84  
RESOLUTION OF THE BOARD OF COUNTY  
COMMISSIONERS OF ST. JOHNS COUNTY, FLORIDA  
APPROVING A SUBDIVISION PLAT FOR JULINGTON CREEK PLANTATION PARCEL 51

WHEREAS, D.R. HORTON, INC. – JACKSONVILLE, AS OWNER, has applied to the Board of County Commissioners of St. Johns County, Florida for approval to record a subdivision plat known as JULINGTON CREEK PLANTATION PARCEL 51.

NOW, THEREFORE BE IT RESOLVED BY THE BOARD OF COUNTY COMMISSIONERS OF ST. JOHNS COUNTY, FLORIDA, as follows:

Section 1. The above-described subdivision plat and its dedicated areas depicted thereon are conditionally approved and accepted by the Board of County Commissioners of St. Johns County, Florida subject to Sections 2, 3 and 4.

Section 2. No Construction Bond will be required.

Section 3. No Maintenance Bond will be required.

Section 4. The approval and acceptance described in Section 1 shall not take effect until the Clerk has received a title opinion, certificate, or policy pertaining to the real property that is the subject of the a forenamed subdivision plat which opinion, certificate or policy is in a form acceptable to the County Attorney or Assistant County Attorney.


Section 5. The approval and acceptance described in Section 1 shall not take effect until the plat has been signed by each of the following departments, person or offices:

- a) Chairman or Vice-Chairman of the Board of County Commissioners of St. Johns County, Florida;
- b) Office of the County Attorney;
- c) County Planning and Zoning Department;
- d) Office of the County Surveyor; and
- e) Clerk of Courts.

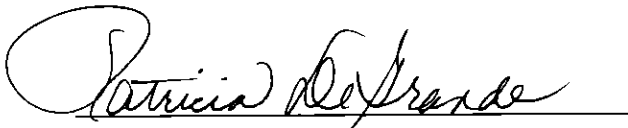
The Clerk shall not sign or accept the Plat for recording until it has been signed by each of the above persons or entities described in a) through d) above. If the plat is not signed and accepted by the Clerk for recording within 14 days from the date hereof, then the above-described conditional approval shall automatically terminate. If the plat is signed by the Clerk on or before such time, the conditions described herein shall be deemed to have been met.

ADOPTED by the Board of County Commissioners of St. Johns County, Florida, this 4<sup>th</sup> day of may, 2004.

BOARD OF COUNTY COMMISSIONERS  
OF ST. JOHNS COUNTY, FLORIDA

BY:   
Karen R. Stern, Its Chair

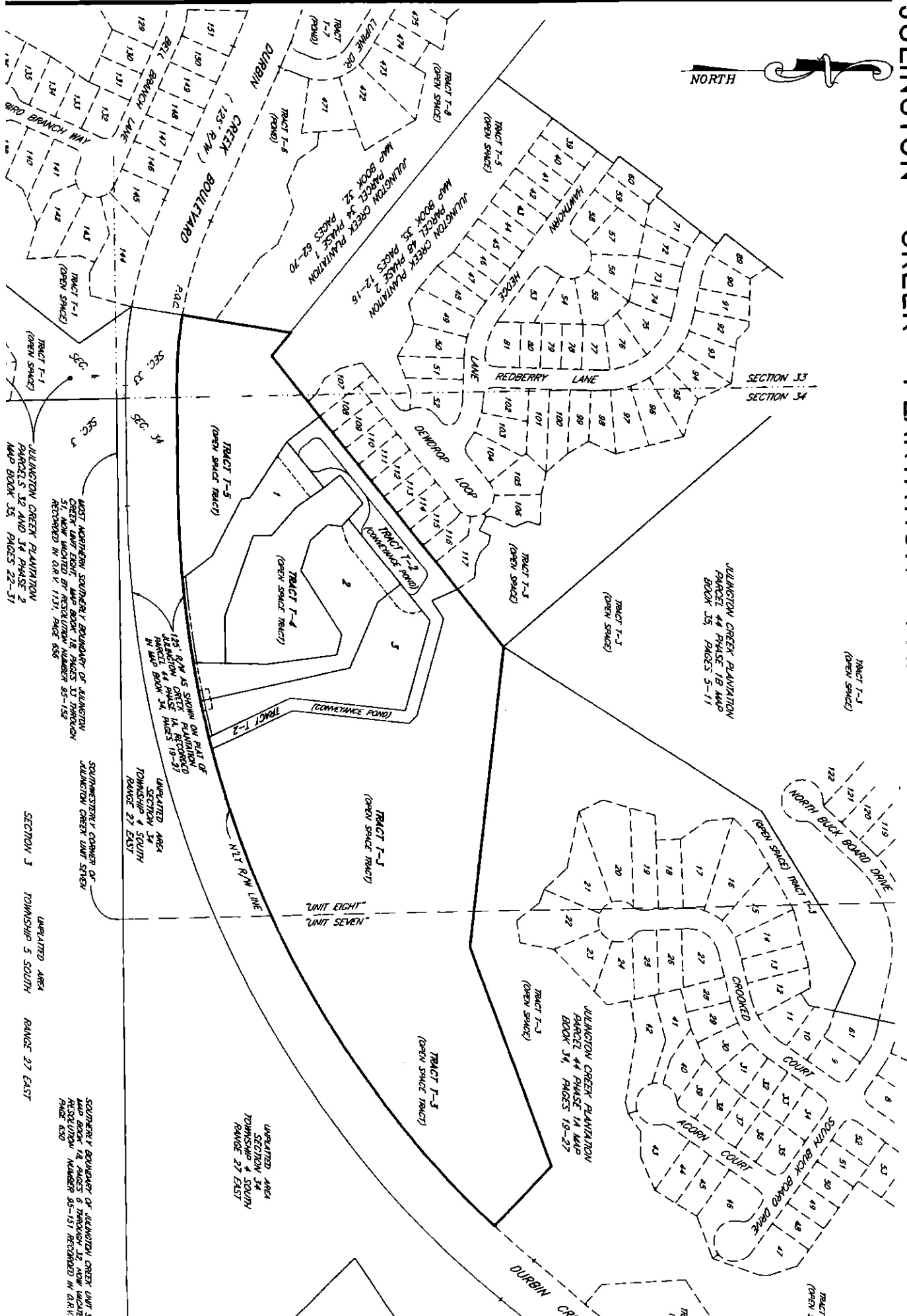
ATTEST: Cheryl Strickland

  
Deputy Clerk

RENDITION DATE 5-5-04



# JULINGTON CREEK PLANTATION PARCEL 51



MOST NORTHERN BOUNDARY OF JULINGTON CREEK UNIT EIGHT MAP BOOK 18 PAGES 11 THROUGH 51, NOW LOCATED BY RESOLUTION NUMBER 85-152 RECORDED IN O.R.V. 1131, PAGE 658

SOUTHWESTLY CORNER OF JULINGTON CREEK UNIT SEVEN

UNDEVELOPED AREA SECTION 34 TOWNSHIP 4 SOUTH RANGE 27 EAST

SOUTHWESTLY BOUNDARY OF JULINGTON CREEK UNIT 5 MAP BOOK 18 PAGES 6 THROUGH 12, NOW LOCATED BY RESOLUTION NUMBER 85-151 RECORDED IN O.R.V. PAGE 650

JULINGTON CREEK PLANTATION PARCEL 44 PHASE 1B MAP BOOK 35, PAGES 5-11

JULINGTON CREEK PLANTATION PARCEL 44 PHASE 2 MAP BOOK 35, PAGES 12-16

JULINGTON CREEK PLANTATION PARCEL 44 PHASE 1A MAP BOOK 34, PAGES 19-23

JULINGTON CREEK PLANTATION PARCEL 44 PHASE 1A MAP BOOK 34, PAGES 19-27

JULINGTON CREEK PLANTATION PARCEL 44 PHASE 1A MAP BOOK 34, PAGES 19-27

JULINGTON CREEK PLANTATION PARCEL 44 PHASE 1A MAP BOOK 34, PAGES 19-27