

RESOLUTION NO. 2005- 106  
RESOLUTION OF THE BOARD OF COUNTY  
COMMISSIONERS OF ST. JOHNS COUNTY, FLORIDA  
APPROVING A SUBDIVISION PLAT FOR PLANTATION ESTATES AT JULINGTON CREEK  
PLANTATION PARCEL 82 PHASE TWO

WHEREAS, JULINGTON CREEK VENTURES, LLP, A FLORIDA LIMITED LIABILITY PARTNERSHIP, AS OWNER, has applied to the Board of County Commissioners of St. Johns County, Florida for approval to record a subdivision plat known as PLANTATION ESTATES AT JULINGTON CREEK PLANTATION PARCEL 82 PHASE TWO.

NOW, THEREFORE BE IT RESOLVED BY THE BOARD OF COUNTY COMMISSIONERS OF ST. JOHNS COUNTY, FLORIDA, as follows:

Section 1. The above-described subdivision plat and its dedicated areas depicted thereon are conditionally approved and accepted by the Board of County Commissioners of St. Johns County, Florida subject to Sections 2, 3, 4, and 5.

Section 2. A Construction Bond has been submitted to the Clerk of Courts' office in the amount of \$970,000.00.

Section 3. A Maintenance Bond will not be required..

Section 4. The approval and acceptance described in Section 1 shall not take effect until the Clerk has received a title opinion, certificate, or policy pertaining to the real property that is the subject of the a forenamed subdivision plat which opinion, certificate or policy is in a form acceptable to the County Attorney or Assistant County Attorney.

Section 5. The approval and acceptance described in Section 1 shall not take effect until the plat has been signed by each of the following departments, person or offices:

- a) Chairman or Vice-Chairman of the Board of County Commissioners of St. Johns County, Florida;
- b) Office of the County Attorney;
- c) County Planning and Zoning Department;
- d) Office of the County Surveyor; and
- e) Clerk of Courts.

The Clerk shall not sign or accept the Plat for recording until it has been signed by each of the above persons or entities described in a) through d) above. If the plat is not signed and accepted by the Clerk for recording within 14 days from the date hereof, then the above-described conditional approval shall automatically terminate. If the plat is signed by the Clerk on or before such time, the conditions described herein shall be deemed to have been met.

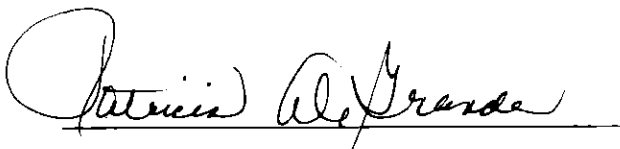
ADOPTED by the Board of County Commissioners of St. Johns County, Florida, this 20<sup>th</sup> day of April, 2005.

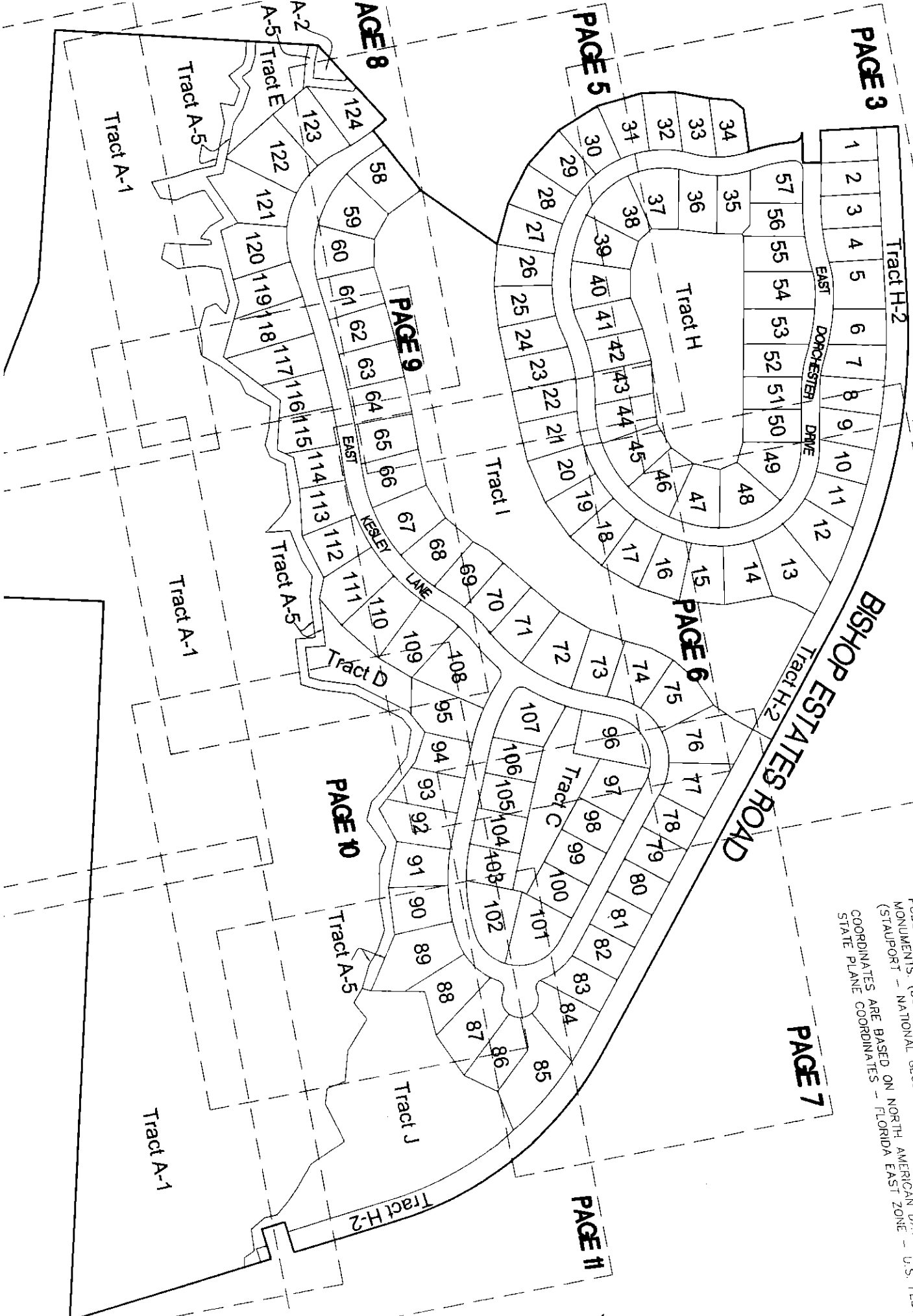
BOARD OF COUNTY COMMISSIONERS  
OF ST. JOHNS COUNTY, FLORIDA

BY:   
Bruce A. Maguire, Chairman

ATTEST: Cheryl Strickland

RENDITION DATE 4-21-05

  
Deputy Clerk



3) COUNTY GIS DATA FOR THE NATIONAL SURVEY PLU #  
 PUBLISHED DATA FOR THE NATIONAL GEODETIC SURVEY PLU #  
 MONUMENTS (DURBIN 2 - NATIONAL GEODETIC DATUM 1983/90  
 (STAUPORT - NATIONAL AMERICAN DATUM U.S. FEET)  
 COORDINATES ARE BASED ON NORTH AMERICAN EAST ZONE -  
 STATE PLANE COORDINATES - FLORIDA EAST ZONE

**JE**  
 CERTAIN FOR ITS ELECTRIC  
 THESE BAND THESE MFRD

LEC  
 PC-  
 P1-  
 P2-  
 P3-  
 P4-  
 P5-  
 P6-  
 P7-  
 P8-  
 P9-  
 P10-