

RESOLUTION NO. 2005- 137

A RESOLUTION OF THE BOARD OF COUNTY COMMISSIONERS OF ST. JOHNS COUNTY, FLORIDA, AUTHORIZING THE CLERK OF THE COURTS, UNDER SECTION 95.361, FLORIDA STATUTES TO FILE THE SURVEY MAP FOR A PORTION OF COUNTY ROAD 214 (WEST KING STREET), FROM ST. AUGUSTINE CITY LIMITS TO STATE ROAD 5 (U.S. 1), CLAIMING A VESTED INTEREST IN THE ROAD DESCRIBED IN THE SURVEY MAP.

WHEREAS, the Board of County Commissioners of St. Johns County, Florida has instructed staff to obtain documentation in order to justify continued County maintenance of roads that are neither dedicated to St. Johns County, nor owned by St. Johns County; and

WHEREAS, a portion of County Road 214 (West King Street), from St. Augustine City Limits to State Road 5 (U.S. 1), as described in the attached and incorporated as Exhibit A, which is the Survey Map, and which is a road that County staff has documented as warranting continued County maintenance; and

WHEREAS, Section 95.361, Florida Statutes details the procedure for a local government to claim a vested interest in a road not constructed by the local government; and

WHEREAS, the procedure set forth in Section 95.361, Florida Statutes, is as follows:

- 1) the road has been constructed by a non-governmental entity, or not constructed by the entity currently maintaining or repairing the road;
- 2) the road has been maintained and/or repaired for the immediate past seven (7) years by the County; and

WHEREAS, under the criteria set forth in Section 95.361, Florida Statutes, such road shall be deemed dedicated to the County, to the extent of the width of the road that actually has been maintained or repaired for the prescribed period, whether or not such road has been formally established as a public highway; and

Jack P. DeGrand
BCC Secy

WHEREAS, the public entity has been continuously using a **portion of County Road 214 (West King Street), from St. Augustine City Limits to State Road 5 (U.S. 1)**, without permission of the underlying land owners for in excess of fifteen (15) years; and

WHEREAS, County Road and Bridge Supervisor, Ivan Burrell, has stated in an affidavit (attached and incorporated as **Exhibit B**) that the County has been responsible for maintaining a **portion of County Road 214 (West King Street), from St. Augustine City Limits to State Road 5 (U.S. 1)**, for the last fifteen (15) years; and

WHEREAS, it is in the best interest of St. Johns County to acquire ownership of a **portion of County Road 214 (West King Street), from St. Augustine City Limits to State Road 5 (U.S. 1)** under statutory dedication and that such acquisition will benefit the citizens of St. Johns County.

NOW THEREFORE, BE IT RESOLVED BY THE BOARD OF COUNTY COMMISSIONERS OF ST. JOHNS COUNTY, FLORIDA, as follows:

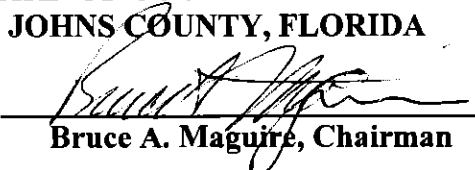
Section 1. The above recitals are incorporated by reference into the body of this Resolution, and such Recitals are adopted as Findings of Fact.

Section 2. The Chairman of the Board of County Commissioners, and Clerk of the Courts are hereby authorized to file the attached **Survey Map of a portion of County Road 214 (West King Street), from St. Augustine City Limits to State Road 5 (U.S. 1)**, in the Public Records of St. Johns County, Florida.

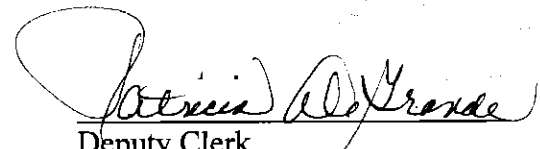
Section 3. The Clerk is instructed to record this Resolution in the Public Records of St. Johns County, Florida.

PASSED AND ADOPTED, this 18th day of MAY, 2005.

**BOARD OF COUNTY COMMISSIONERS,
ST. JOHNS COUNTY, FLORIDA**

By: 
Bruce A. Maguire, Chairman

ATTEST: Cheryl Strickland, Clerk of Court


Deputy Clerk

RENDITION DATE 5-19-05

LEGEND

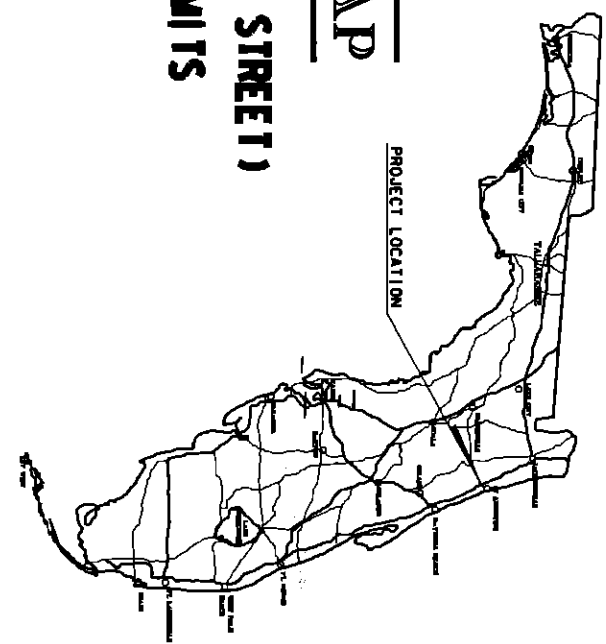
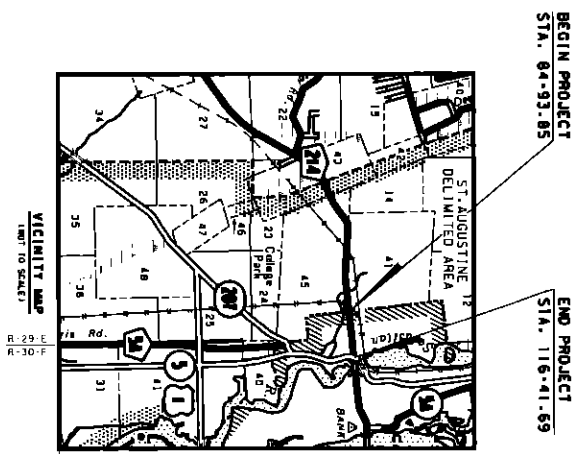
- 1. 1/4 SECTION
- 2. 1/4 SECTION
- 3. 1/4 SECTION
- 4. 1/4 SECTION
- 5. 1/4 SECTION
- 6. 1/4 SECTION
- 7. 1/4 SECTION
- 8. 1/4 SECTION
- 9. 1/4 SECTION
- 10. 1/4 SECTION
- 11. 1/4 SECTION
- 12. 1/4 SECTION
- 13. 1/4 SECTION
- 14. 1/4 SECTION
- 15. 1/4 SECTION
- 16. 1/4 SECTION
- 17. 1/4 SECTION
- 18. 1/4 SECTION
- 19. 1/4 SECTION
- 20. 1/4 SECTION
- 21. 1/4 SECTION
- 22. 1/4 SECTION
- 23. 1/4 SECTION
- 24. 1/4 SECTION
- 25. 1/4 SECTION
- 26. 1/4 SECTION
- 27. 1/4 SECTION
- 28. 1/4 SECTION
- 29. 1/4 SECTION
- 30. 1/4 SECTION
- 31. 1/4 SECTION
- 32. 1/4 SECTION
- 33. 1/4 SECTION
- 34. 1/4 SECTION
- 35. 1/4 SECTION
- 36. 1/4 SECTION
- 37. 1/4 SECTION
- 38. 1/4 SECTION
- 39. 1/4 SECTION
- 40. 1/4 SECTION
- 41. 1/4 SECTION
- 42. 1/4 SECTION
- 43. 1/4 SECTION
- 44. 1/4 SECTION
- 45. 1/4 SECTION
- 46. 1/4 SECTION
- 47. 1/4 SECTION
- 48. 1/4 SECTION
- 49. 1/4 SECTION
- 50. 1/4 SECTION
- 51. 1/4 SECTION
- 52. 1/4 SECTION
- 53. 1/4 SECTION
- 54. 1/4 SECTION
- 55. 1/4 SECTION
- 56. 1/4 SECTION
- 57. 1/4 SECTION
- 58. 1/4 SECTION
- 59. 1/4 SECTION
- 60. 1/4 SECTION
- 61. 1/4 SECTION
- 62. 1/4 SECTION
- 63. 1/4 SECTION
- 64. 1/4 SECTION
- 65. 1/4 SECTION
- 66. 1/4 SECTION
- 67. 1/4 SECTION
- 68. 1/4 SECTION
- 69. 1/4 SECTION
- 70. 1/4 SECTION
- 71. 1/4 SECTION
- 72. 1/4 SECTION
- 73. 1/4 SECTION
- 74. 1/4 SECTION
- 75. 1/4 SECTION
- 76. 1/4 SECTION
- 77. 1/4 SECTION
- 78. 1/4 SECTION
- 79. 1/4 SECTION
- 80. 1/4 SECTION
- 81. 1/4 SECTION
- 82. 1/4 SECTION
- 83. 1/4 SECTION
- 84. 1/4 SECTION
- 85. 1/4 SECTION
- 86. 1/4 SECTION
- 87. 1/4 SECTION
- 88. 1/4 SECTION
- 89. 1/4 SECTION
- 90. 1/4 SECTION
- 91. 1/4 SECTION
- 92. 1/4 SECTION
- 93. 1/4 SECTION
- 94. 1/4 SECTION
- 95. 1/4 SECTION
- 96. 1/4 SECTION
- 97. 1/4 SECTION
- 98. 1/4 SECTION
- 99. 1/4 SECTION
- 100. 1/4 SECTION

SHEET NO.	DESCRIPTION
2-3	COVER SHEET DETAILED SHEETS

STATION	TIMBERLAND	KILGASTING
0+00	100	100
1+00	100	100
2+00	100	100
3+00	100	100
4+00	100	100
5+00	100	100
6+00	100	100
7+00	100	100
8+00	100	100
9+00	100	100
10+00	100	100

MAINTENANCE CERTIFICATION
 IT IS HEREBY CERTIFIED THAT:
 THE RIGHT OF WAY SHOWN HEREON IS VESTED IN ST. JOHNS COUNTY, A POLITICAL SUBDIVISION OF THE STATE OF GEORGIA, BY SECTION 95.16, CHAPTER 50, ACTS 1982-1, 1982-2, 1982-3, 1982-4, 1982-5, 1982-6, 1982-7, 1982-8, 1982-9, 1982-10, 1982-11, 1982-12, 1983-1, 1983-2, 1983-3, 1983-4, 1983-5, 1983-6, 1983-7, 1983-8, 1983-9, 1983-10, 1983-11, 1983-12, 1984-1, 1984-2, 1984-3, 1984-4, 1984-5, 1984-6, 1984-7, 1984-8, 1984-9, 1984-10, 1984-11, 1984-12, 1985-1, 1985-2, 1985-3, 1985-4, 1985-5, 1985-6, 1985-7, 1985-8, 1985-9, 1985-10, 1985-11, 1985-12, 1986-1, 1986-2, 1986-3, 1986-4, 1986-5, 1986-6, 1986-7, 1986-8, 1986-9, 1986-10, 1986-11, 1986-12, 1987-1, 1987-2, 1987-3, 1987-4, 1987-5, 1987-6, 1987-7, 1987-8, 1987-9, 1987-10, 1987-11, 1987-12, 1988-1, 1988-2, 1988-3, 1988-4, 1988-5, 1988-6, 1988-7, 1988-8, 1988-9, 1988-10, 1988-11, 1988-12, 1989-1, 1989-2, 1989-3, 1989-4, 1989-5, 1989-6, 1989-7, 1989-8, 1989-9, 1989-10, 1989-11, 1989-12, 1990-1, 1990-2, 1990-3, 1990-4, 1990-5, 1990-6, 1990-7, 1990-8, 1990-9, 1990-10, 1990-11, 1990-12, 1991-1, 1991-2, 1991-3, 1991-4, 1991-5, 1991-6, 1991-7, 1991-8, 1991-9, 1991-10, 1991-11, 1991-12, 1992-1, 1992-2, 1992-3, 1992-4, 1992-5, 1992-6, 1992-7, 1992-8, 1992-9, 1992-10, 1992-11, 1992-12, 1993-1, 1993-2, 1993-3, 1993-4, 1993-5, 1993-6, 1993-7, 1993-8, 1993-9, 1993-10, 1993-11, 1993-12, 1994-1, 1994-2, 1994-3, 1994-4, 1994-5, 1994-6, 1994-7, 1994-8, 1994-9, 1994-10, 1994-11, 1994-12, 1995-1, 1995-2, 1995-3, 1995-4, 1995-5, 1995-6, 1995-7, 1995-8, 1995-9, 1995-10, 1995-11, 1995-12, 1996-1, 1996-2, 1996-3, 1996-4, 1996-5, 1996-6, 1996-7, 1996-8, 1996-9, 1996-10, 1996-11, 1996-12, 1997-1, 1997-2, 1997-3, 1997-4, 1997-5, 1997-6, 1997-7, 1997-8, 1997-9, 1997-10, 1997-11, 1997-12, 1998-1, 1998-2, 1998-3, 1998-4, 1998-5, 1998-6, 1998-7, 1998-8, 1998-9, 1998-10, 1998-11, 1998-12, 1999-1, 1999-2, 1999-3, 1999-4, 1999-5, 1999-6, 1999-7, 1999-8, 1999-9, 1999-10, 1999-11, 1999-12, 2000-1, 2000-2, 2000-3, 2000-4, 2000-5, 2000-6, 2000-7, 2000-8, 2000-9, 2000-10, 2000-11, 2000-12, 2001-1, 2001-2, 2001-3, 2001-4, 2001-5, 2001-6, 2001-7, 2001-8, 2001-9, 2001-10, 2001-11, 2001-12, 2002-1, 2002-2, 2002-3, 2002-4, 2002-5, 2002-6, 2002-7, 2002-8, 2002-9, 2002-10, 2002-11, 2002-12, 2003-1, 2003-2, 2003-3, 2003-4, 2003-5, 2003-6, 2003-7, 2003-8, 2003-9, 2003-10, 2003-11, 2003-12, 2004-1, 2004-2, 2004-3, 2004-4, 2004-5, 2004-6, 2004-7, 2004-8, 2004-9, 2004-10, 2004-11, 2004-12, 2005-1, 2005-2, 2005-3, 2005-4, 2005-5, 2005-6, 2005-7, 2005-8, 2005-9, 2005-10, 2005-11, 2005-12, 2006-1, 2006-2, 2006-3, 2006-4, 2006-5, 2006-6, 2006-7, 2006-8, 2006-9, 2006-10, 2006-11, 2006-12, 2007-1, 2007-2, 2007-3, 2007-4, 2007-5, 2007-6, 2007-7, 2007-8, 2007-9, 2007-10, 2007-11, 2007-12, 2008-1, 2008-2, 2008-3, 2008-4, 2008-5, 2008-6, 2008-7, 2008-8, 2008-9, 2008-10, 2008-11, 2008-12, 2009-1, 2009-2, 2009-3, 2009-4, 2009-5, 2009-6, 2009-7, 2009-8, 2009-9, 2009-10, 2009-11, 2009-12, 2010-1, 2010-2, 2010-3, 2010-4, 2010-5, 2010-6, 2010-7, 2010-8, 2010-9, 2010-10, 2010-11, 2010-12, 2011-1, 2011-2, 2011-3, 2011-4, 2011-5, 2011-6, 2011-7, 2011-8, 2011-9, 2011-10, 2011-11, 2011-12, 2012-1, 2012-2, 2012-3, 2012-4, 2012-5, 2012-6, 2012-7, 2012-8, 2012-9, 2012-10, 2012-11, 2012-12, 2013-1, 2013-2, 2013-3, 2013-4, 2013-5, 2013-6, 2013-7, 2013-8, 2013-9, 2013-10, 2013-11, 2013-12, 2014-1, 2014-2, 2014-3, 2014-4, 2014-5, 2014-6, 2014-7, 2014-8, 2014-9, 2014-10, 2014-11, 2014-12, 2015-1, 2015-2, 2015-3, 2015-4, 2015-5, 2015-6, 2015-7, 2015-8, 2015-9, 2015-10, 2015-11, 2015-12, 2016-1, 2016-2, 2016-3, 2016-4, 2016-5, 2016-6, 2016-7, 2016-8, 2016-9, 2016-10, 2016-11, 2016-12, 2017-1, 2017-2, 2017-3, 2017-4, 2017-5, 2017-6, 2017-7, 2017-8, 2017-9, 2017-10, 2017-11, 2017-12, 2018-1, 2018-2, 2018-3, 2018-4, 2018-5, 2018-6, 2018-7, 2018-8, 2018-9, 2018-10, 2018-11, 2018-12, 2019-1, 2019-2, 2019-3, 2019-4, 2019-5, 2019-6, 2019-7, 2019-8, 2019-9, 2019-10, 2019-11, 2019-12, 2020-1, 2020-2, 2020-3, 2020-4, 2020-5, 2020-6, 2020-7, 2020-8, 2020-9, 2020-10, 2020-11, 2020-12, 2021-1, 2021-2, 2021-3, 2021-4, 2021-5, 2021-6, 2021-7, 2021-8, 2021-9, 2021-10, 2021-11, 2021-12, 2022-1, 2022-2, 2022-3, 2022-4, 2022-5, 2022-6, 2022-7, 2022-8, 2022-9, 2022-10, 2022-11, 2022-12, 2023-1, 2023-2, 2023-3, 2023-4, 2023-5, 2023-6, 2023-7, 2023-8, 2023-9, 2023-10, 2023-11, 2023-12, 2024-1, 2024-2, 2024-3, 2024-4, 2024-5, 2024-6, 2024-7, 2024-8, 2024-9, 2024-10, 2024-11, 2024-12, 2025-1, 2025-2, 2025-3, 2025-4, 2025-5, 2025-6, 2025-7, 2025-8, 2025-9, 2025-10, 2025-11, 2025-12.

**ST. JOHNS COUNTY
 PUBLIC WORKS DEPARTMENT
 MAPS OF THE
 COUNTY ROAD
 MAINTENANCE MAP
 COUNTY ROAD NO. 214 (WEST KING STREET)
 FROM ST. AUGUSTINE CITY LIMITS
 TO S.R. 5 (U.S. 1)**



GENERAL NOTES
 1. Stationing is given to the four feet center line of the road.
 2. Stationing is given to the four feet center line of the road.
 3. Stationing is given to the four feet center line of the road.
 4. Stationing is given to the four feet center line of the road.
 5. Stationing is given to the four feet center line of the road.

SURVEY CERTIFICATION
 I, the undersigned, Surveyor and Mapper, do hereby certify that the map and plan shown hereon were prepared by me or under my direct supervision and that I am a duly licensed Surveyor and Mapper in the State of Georgia.
 My commission expires on January 1, 2025.
 Date: _____

 Surveyor and Mapper

MAINTENANCE MAP

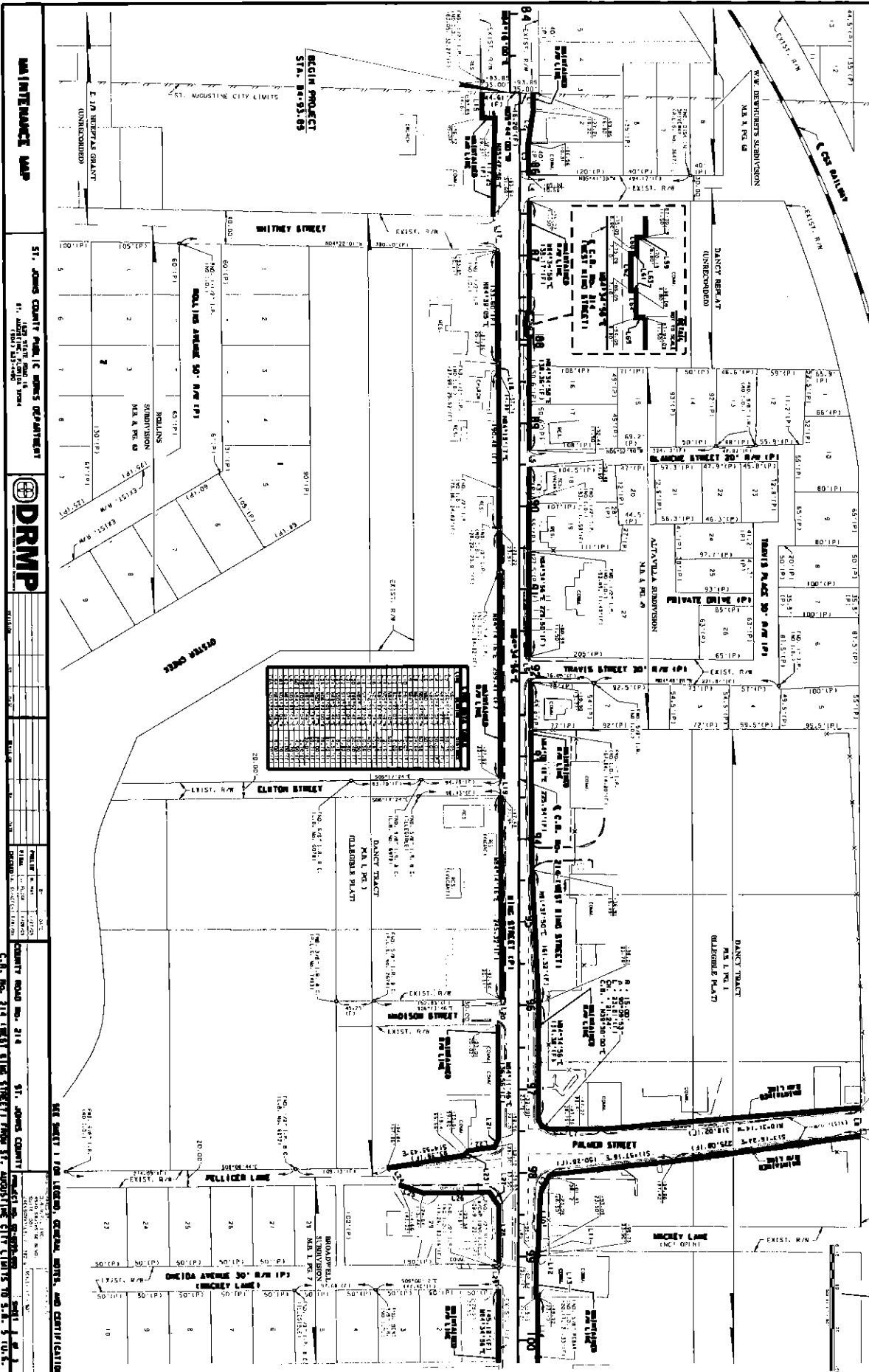
ST. JOHNS COUNTY PUBLIC WORKS DEPARTMENT
 100 EAST MAIN STREET, SUITE 100
 ST. AUGUSTINE, FLORIDA 32084
 PHONE: (904) 829-3333
 FAX: (904) 829-3334
 WWW: WWW.SJCOURTY.COM

DRMP

ST. JOHNS COUNTY
 COUNTY ROAD NO. 214
 FROM ST. AUGUSTINE CITY LIMITS TO S.R. 5 (U.S. 1)

SECTION 41, TOWNSHIP 7 SOUTH, RANGE 29 EAST

ST. AUGUSTINE



UNINTERFERED MAP

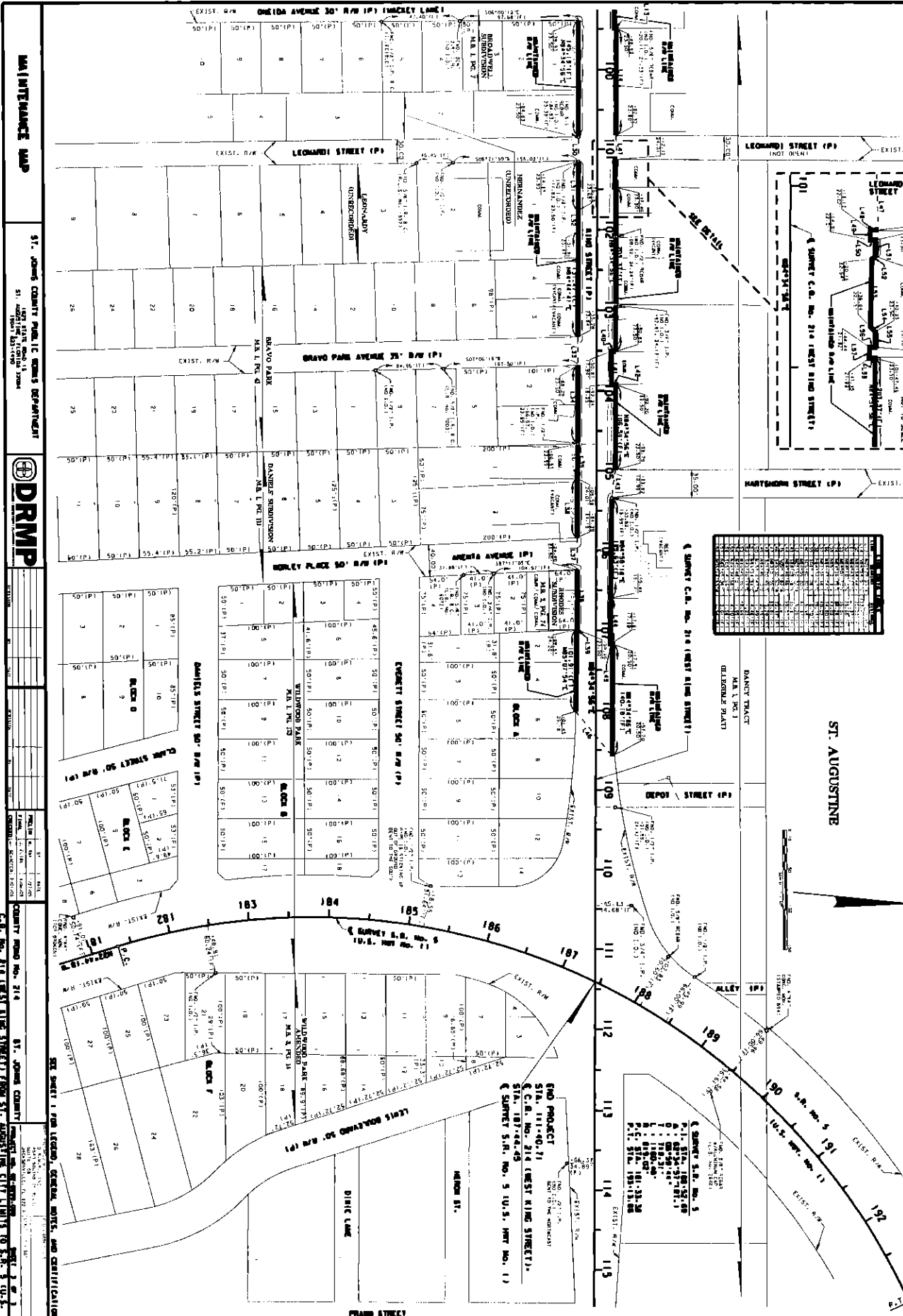
ST. JOHNS COUNTY PUBLIC WORKS DEPARTMENT
 11. JOHN W. ...
 11. JOHN W. ...



NO.	DATE	DESCRIPTION	BY
1			
2			
3			
4			
5			
6			
7			
8			
9			
10			
11			
12			
13			
14			
15			
16			
17			
18			
19			
20			
21			
22			
23			
24			
25			
26			
27			
28			
29			
30			
31			
32			
33			
34			
35			
36			
37			
38			
39			
40			
41			
42			
43			
44			
45			
46			
47			
48			
49			
50			

ST. JOHNS COUNTY PUBLIC WORKS DEPARTMENT
 11. JOHN W. ...
 11. JOHN W. ...
 COUNTY ROAD NO. 214
 ST. JOHNS COUNTY
 PROJECT NO. 214
 ST. AUGUSTINE CITY LIMITS TO S.E. 1/4 OF S.E. 1/4

SECTIONS 41 & 37, TOWNSHIP 7 SOUTH, RANGE 29 & 30 EAST



ST. AUGUSTINE

Block	Area (Ac.)	Owner
Block A	1.00	...
Block B	1.00	...
Block C	1.00	...
Block D	1.00	...
Block E	1.00	...
Block F	1.00	...

MAINTENANCE MAP

ST. JOHNS COUNTY PUBLIC WORKS DEPARTMENT

1400 STATE ROAD 11, ST. AUGUSTINE, FLORIDA 32084

DRMP

COUNTY ROAD NO. 214 ST. JOHNS COUNTY PROJECT NO. 214-01-01-01 PART 2 OF 2 C.E. No. 214 (EAST KING STREET) FROM ST. AUGUSTINE CITY LIMITS TO S.W. 1/4 S. 11

AFFIDAVIT

**STATE OF FLORIDA
COUNTY OF ST. JOHNS**

On this day before me, the undersigned authority, personally appeared Ivan Burrell, Road and Bridge Superintendent, who being first by me duly sworn, deposes and says that the County has been maintaining W. King Street for the last 15 years and the public has continuously used the road during this time. This maintenance includes repairing pavement, cleaning storm drains, repairing storm drains, traffic striping and sidewalk repair.

FURTHER AFFIANT SAYETH NAUGHT.

Ivan Burrell

**STATE OF FLORIDA
COUNTY OF ST. JOHNS**

The foregoing instrument was acknowledged before me this 27th day of April 2005, by Ivan Burrell, Road and Bridge Superintendent, who is personally known to me.

Phyllis Thors
Notary

