

RESOLUTION NO. 2005- 170  
RESOLUTION OF THE BOARD OF COUNTY  
COMMISSIONERS OF ST. JOHNS COUNTY, FLORIDA  
APPROVING A SUBDIVISION PLAT FOR SAINT JOHNS SIX MILE CREEK WEST  
UNIT 3 A

WHEREAS, D.R. HORTON, INC. – JACKSONVILLE, A DELAWARE CORPORATION, AS OWNER, has applied to the Board of County Commissioners of St. Johns County, Florida for approval to record a subdivision plat known as SAINT JOHNS SIX MILE CREEK WEST UNIT 3A.

NOW, THEREFORE BE IT RESOLVED BY THE BOARD OF COUNTY COMMISSIONERS OF ST. JOHNS COUNTY, FLORIDA, as follows:

Section 1. The above-described subdivision plat and its dedicated areas depicted thereon are conditionally approved and accepted by the Board of County Commissioners of St. Johns County, Florida subject to Sections 2, 3, 4, 5 and 6.

Section 2. A Construction Bond, in the amount of \$4,112,440.25 has been filed with the Clerk of Courts.

Section 3. A Maintenance Bond, in the amount of \$536,405.25 will be required.

Section 4. The approval and acceptance described in Section 1 shall not take effect until the Clerk has received a title opinion, certificate, or policy pertaining to the real property that is the subject of the a forenamed subdivision plat which opinion, certificate or policy is in a form acceptable to the County Attorney or Assistant County Attorney.

Section 5. The Clerk is instructed to file and record the consent and joinder (s) to the plat executed by all mortgages identified in the title opinion or certificate of the title in Section 4.


Section 6. The approval and acceptance described in Section 1 shall not take effect until the plat has been signed by each of the following departments, person or offices:

- a) Chairman or Vice-Chairman of the Board of County Commissioners of St. Johns County, Florida;
- b) Office of the County Attorney;
- c) County Planning and Zoning Department;
- d) Office of the County Surveyor; and
- e) Clerk of Courts.

The Clerk shall not sign or accept the Plat for recording until it has been signed by each of the above persons or entities described in a) through d) above. If the plat is not signed and accepted by the Clerk for recording within 14 days from the date hereof, then the above-described conditional approval shall automatically terminate. If the plat is signed by the Clerk on or before such time, the conditions described herein shall be deemed to have been met.

ADOPTED by the Board of County Commissioners of St. Johns County, Florida, this 28<sup>th</sup> day of June, 2005.

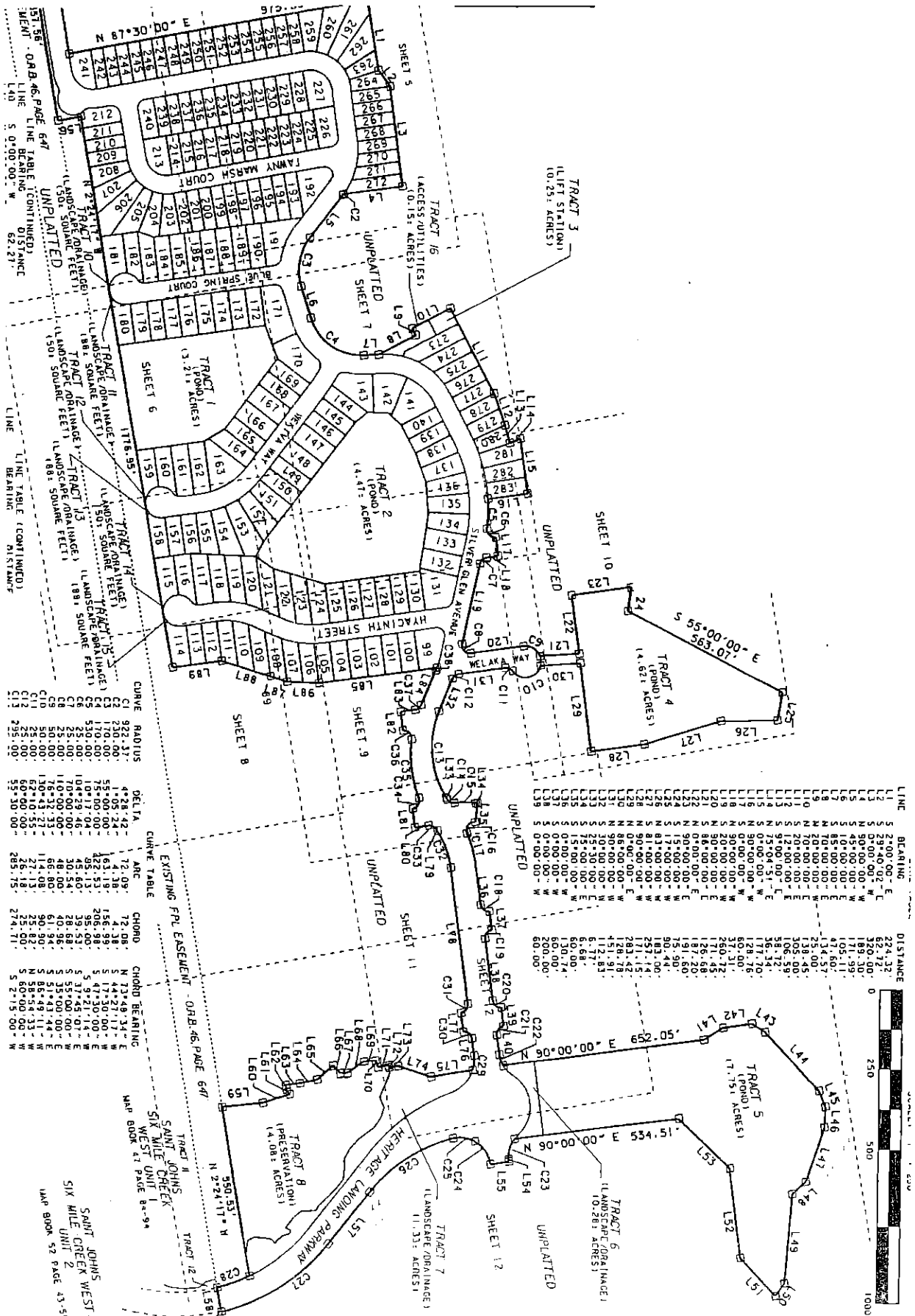
BOARD OF COUNTY COMMISSIONERS  
OF ST. JOHNS COUNTY, FLORIDA

BY:   
Bruce Maguire, Its Chairman

ATTEST: Cheryl Strickland

  
Deputy Clerk

**SAIN'T JOHNS SIX MILE CREEK WEST UNIT 3A**  
 BEING A PART OF THE UNPLATTED LANDS IN SECTIONS 18, 19 AND A PART OF THE ANTONIO HUERTAS  
 GRANT, SECTION 38, TOWNSHIP 6 SOUTH, RANGE 28 EAST, ST. JOHNS COUNTY FLORIDA



LINE BEARING DISTANCE  
 5.00°00'00" W 140  
 UNPLATTED  
 (LANDS SQUARE FEET)  
 TRACT 1 (14.41 ACRES)  
 TRACT 2 (14.62 ACRES)  
 TRACT 3 (10.25 ACRES)  
 TRACT 4 (14.621 ACRES)  
 TRACT 5 (17.151 ACRES)  
 TRACT 6 (10.251 ACRES)

LINE BEARING DISTANCE  
 5.00°00'00" W 140  
 UNPLATTED  
 (LANDS SQUARE FEET)  
 TRACT 1 (14.41 ACRES)  
 TRACT 2 (14.62 ACRES)  
 TRACT 3 (10.25 ACRES)  
 TRACT 4 (14.621 ACRES)  
 TRACT 5 (17.151 ACRES)  
 TRACT 6 (10.251 ACRES)

LINE BEARING DISTANCE  
 5.00°00'00" W 140  
 UNPLATTED  
 (LANDS SQUARE FEET)  
 TRACT 1 (14.41 ACRES)  
 TRACT 2 (14.62 ACRES)  
 TRACT 3 (10.25 ACRES)  
 TRACT 4 (14.621 ACRES)  
 TRACT 5 (17.151 ACRES)  
 TRACT 6 (10.251 ACRES)

LINE BEARING DISTANCE  
 5.00°00'00" W 140  
 UNPLATTED  
 (LANDS SQUARE FEET)  
 TRACT 1 (14.41 ACRES)  
 TRACT 2 (14.62 ACRES)  
 TRACT 3 (10.25 ACRES)  
 TRACT 4 (14.621 ACRES)  
 TRACT 5 (17.151 ACRES)  
 TRACT 6 (10.251 ACRES)

CHORD BEARING DISTANCE

C1	922.37	4°28'42"	1.05824
C2	230.00	4.138	1.8699
C3	170.00	1.62119	206.98
C4	75.00	42.53	5.1730
C5	50.00	104°29'46"	39.53
C6	25.00	70°00'00"	28.68
C7	25.00	110°00'00"	40.96
C8	25.00	136°24'23"	50.81
C9	50.00	18°00'00"	50.81
C10	25.00	62°10'55"	25.82
C11	25.00	60°00'00"	25.00
C12	25.00	28.18	25.00
C13	25.00	274.71	25.00

CHORD BEARING DISTANCE

C14	922.37	4°28'42"	1.05824
C15	230.00	4.138	1.8699
C16	170.00	1.62119	206.98
C17	75.00	42.53	5.1730
C18	50.00	104°29'46"	39.53
C19	25.00	70°00'00"	28.68
C20	25.00	110°00'00"	40.96
C21	25.00	136°24'23"	50.81
C22	50.00	18°00'00"	50.81
C23	25.00	62°10'55"	25.82
C24	25.00	60°00'00"	25.00
C25	25.00	28.18	25.00
C26	25.00	274.71	25.00

CHORD BEARING DISTANCE

C27	922.37	4°28'42"	1.05824
C28	230.00	4.138	1.8699
C29	170.00	1.62119	206.98
C30	75.00	42.53	5.1730
C31	50.00	104°29'46"	39.53
C32	25.00	70°00'00"	28.68
C33	25.00	110°00'00"	40.96
C34	25.00	136°24'23"	50.81
C35	50.00	18°00'00"	50.81
C36	25.00	62°10'55"	25.82
C37	25.00	60°00'00"	25.00
C38	25.00	28.18	25.00
C39	25.00	274.71	25.00

CHORD BEARING DISTANCE

C40	922.37	4°28'42"	1.05824
C41	230.00	4.138	1.8699
C42	170.00	1.62119	206.98
C43	75.00	42.53	5.1730
C44	50.00	104°29'46"	39.53
C45	25.00	70°00'00"	28.68
C46	25.00	110°00'00"	40.96
C47	25.00	136°24'23"	50.81
C48	50.00	18°00'00"	50.81
C49	25.00	62°10'55"	25.82
C50	25.00	60°00'00"	25.00
C51	25.00	28.18	25.00
C52	25.00	274.71	25.00