

RESOLUTION NO. 2005- 80
RESOLUTION OF THE BOARD OF COUNTY
COMMISSIONERS OF ST. JOHNS COUNTY, FLORIDA
APPROVING A PLAT FOR OUTLET CENTRE DRIVE

WHEREAS, HIGHLAND POINTE, LTD., A FLORIDA LIMITED PARTNERSHIP has applied to the Board of County Commissioners of St. Johns County, Florida for approval to record a plat known as OUTLET CENTRE DRIVE.

NOW, THEREFORE BE IT RESOLVED BY THE BOARD OF COUNTY COMMISSIONERS OF ST. JOHNS COUNTY, FLORIDA, as follows:

Section 1. The above-described subdivision plat and its dedicated areas depicted thereon are conditionally approved and accepted by the Board of County Commissioners of St. Johns County, Florida subject to Sections 2, 3, 4, and 5.

Section 2. A Construction Bond has been submitted to the Clerk of Courts' office in the amount of \$679,506.25.

Section 3. A Maintenance Bond will not be required.

Section 4. The approval and acceptance described in Section 1 shall not take effect until the Clerk has received a title opinion, certificate, or policy pertaining to the real property that is the subject of the a forenamed subdivision plat which opinion, certificate or policy is in a form acceptable to the County Attorney or Assistant County Attorney.

Section 5. The approval and acceptance described in Section 1 shall not take effect until the plat has been signed by each of the following departments, person or offices:

- a) Chairman or Vice-Chairman of the Board of County Commissioners of St. Johns County, Florida;
- b) Office of the County Attorney;
- c) County Planning and Zoning Department;
- d) Office of the County Surveyor; and
- e) Clerk of Courts.

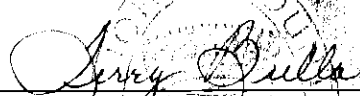
The Clerk shall not sign or accept the Plat for recording until it has been signed by each of the above persons or entities described in a) through d) above. If the plat is not signed and accepted by the Clerk for recording within 14 days from the date hereof, then the above-described conditional approval shall automatically terminate. If the plat is signed by the Clerk on or before such time, the conditions described herein shall be deemed to have been met.

ADOPTED by the Board of County Commissioners of St. Johns County, Florida, this 23rd day of March, 2005.

BOARD OF COUNTY COMMISSIONERS
OF ST. JOHNS COUNTY, FLORIDA

BY: 
Bruce A. Maguire, Chairman

ATTEST: Cheryl Strickland

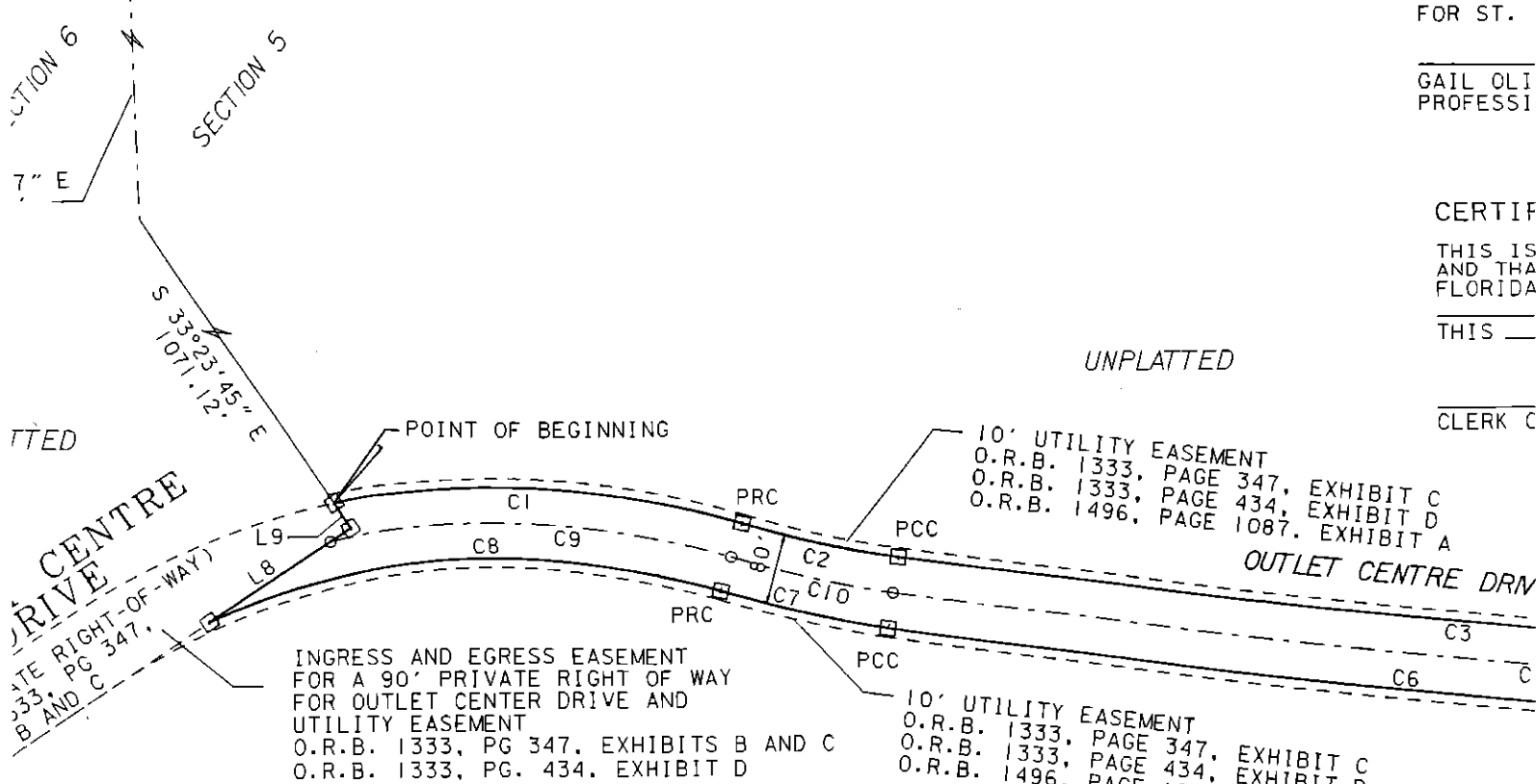

Deputy Clerk

RENDITION DATE March 24, 2005

GAIL OLI PROFESSI

CERTIF THIS IS AND THE FLORIDA THIS

CLERK C



NOTES:

1. BEARINGS SHOWN HEREON BASED ON FLORIDA STATE PLANE COORDINATE SYSTEM EAST ZONE, WITH THE BEARING ON THE NORTH LINE OF SECTION 5 BEING N 89°15'19" E.
2. NOTICE: THIS PLAT, AS RECORDED IN ITS GRAPHIC FORM, IS THE OFFICIAL DEPICTION OF THE SUBDIVIDED LANDS DESCRIBED HEREIN AND WILL IN NO CIRCUMSTANCES BE SUPPLANTED IN AUTHORITY BY ANY OTHER GRAPHIC OR DIGITAL FORM OF THE PLAT. THERE MAY BE ADDITIONAL RESTRICTIONS THAT ARE NOT RECORDED ON THIS PLAT THAT MAY BE FOUND IN THE PUBLIC RECORDS OF THIS COUNTY.
3. COORDINATES BASED ON NORTH AMERICAN DATUM 1983/90 - STATE PLANE COORDINATES - FLORIDA EAST ZONE - U.S. FEET. THE INTENDED USE OF THESE COORDINATES IS FOR GIS BASE MAPPING PURPOSES. THE GEODETIC CONTROL RELIED UPON FOR THESE VALUES WAS THE ST. JOHNS COUNTY THREE MILE CONTROL NETWORK.

PRC	DENOTES
PCC	DENOTES
PT	DENOTES
PC	DENOTES
o	DENOTES
□	DENOTES
R/W	DENOTES
O.R.B.	DENOTES

