

RESOLUTION NO. 2006- 252  
RESOLUTION OF THE BOARD OF COUNTY  
COMMISSIONERS OF ST. JOHNS COUNTY, FLORIDA  
APPROVING A SUBDIVISION PLAT FOR YOUNG'S ESTATES

WHEREAS, GEOFFREY A. YOUNG and CAROLYN R. YOUNG, AS OWNERS, have applied to the Board of County Commissioners of St. Johns County, Florida for approval to record a subdivision plat known as YOUNG'S ESTATES.

NOW, THEREFORE BE IT RESOLVED BY THE BOARD OF COUNTY COMMISSIONERS OF ST. JOHNS COUNTY, FLORIDA, as follows:

Section 1. The above-described subdivision plat and its dedicated areas depicted thereon are conditionally approved and accepted by the Board of County Commissioners of St. Johns County, Florida subject to Sections 2, 3, 4, and 5.

Section 2. A Construction Bond is not required.

Section 3. A Maintenance Bond will not be required.

Section 4. The approval and acceptance described in Section 1 shall not take effect until the Clerk has received a title opinion, certificate, or policy pertaining to the real property that is the subject of the a forenamed subdivision plat which opinion, certificate or policy is in a form acceptable to the County Attorney or Assistant County Attorney.

Section 5. The approval and acceptance described in Section 1 shall not take effect until the plat has been signed by each of the following departments, person or offices:

- a) Chairman or Vice-Chairman of the Board of County Commissioners of St. Johns County, Florida;
- b) Office of the County Attorney;
- c) County Planning and Zoning Department;
- d) Office of the County Surveyor; and
- e) Clerk of Courts.

The Clerk shall not sign or accept the Plat for recording until it has been signed by each of the above persons or entities described in a) through d) above. If the plat is not signed and accepted by the Clerk for recording within 14 days from the date hereof, then the above-described conditional approval shall automatically terminate. If the plat is signed by the Clerk on or before such time, the conditions described herein shall be deemed to have been met.

ADOPTED by the Board of County Commissioners of St. Johns County, Florida, this 25<sup>th</sup> day of July, 2006.

BOARD OF COUNTY COMMISSIONERS  
OF ST. JOHNS COUNTY, FLORIDA

BY: James E. Bryant  
James E. Bryant, Chairman

RENDITION DATE 7/26/2006

ATTEST: Cheryl Strickland

Robert L. Platt  
Deputy Clerk

MAP  
SH

ADOPTIC

THIS IS TO CERTIFY THAT THE U  
HUSBAND AND WIFE (HEREIN AF  
OWNERS OF THE SAID LANDS, W  
ESTATES, AND THAT THEY HAVE  
CORRECT PLAT OF SAID LANDS  
REMAIN PRIVATE AND THE SOLE  
SUCCESSORS AND ASSIGNS, EX

THE OWNER SHALL HAVE SOLE /  
DESIGNED ON THIS PLAT TO AN  
COMMUNITY DEVELOPMENT DIST

IN WITNESS WHEREOF, THE OWNER  
BE EXECUTED THIS \_\_\_\_\_ D

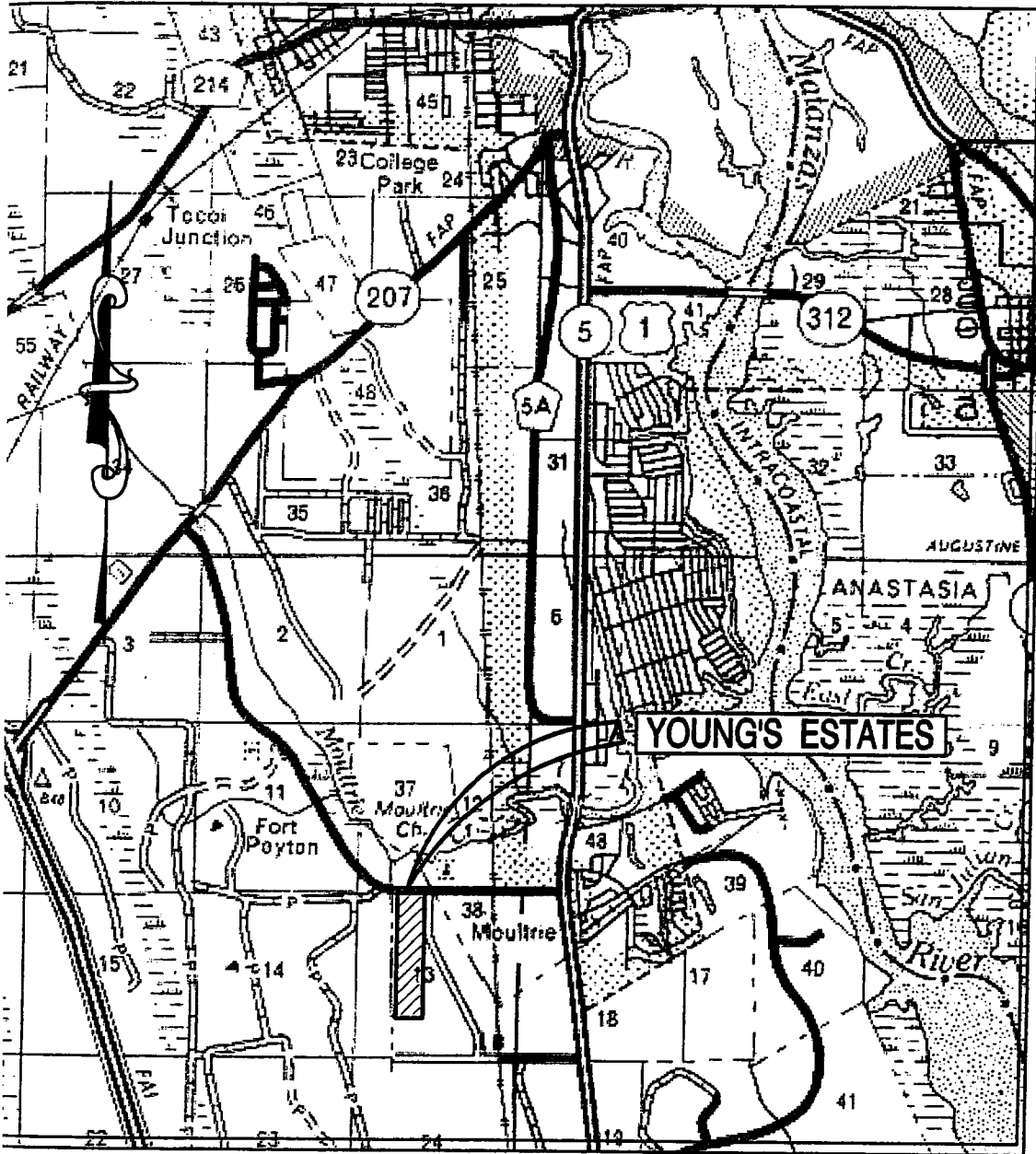
GEOFFREY

WITNESS \_\_\_\_\_

\_\_\_\_\_  
TYPE OR PRINT NAME

WITNESS \_\_\_\_\_

\_\_\_\_\_  
TYPE OF PRINT NAME



LOCATION MAP

NOT TO SCALE

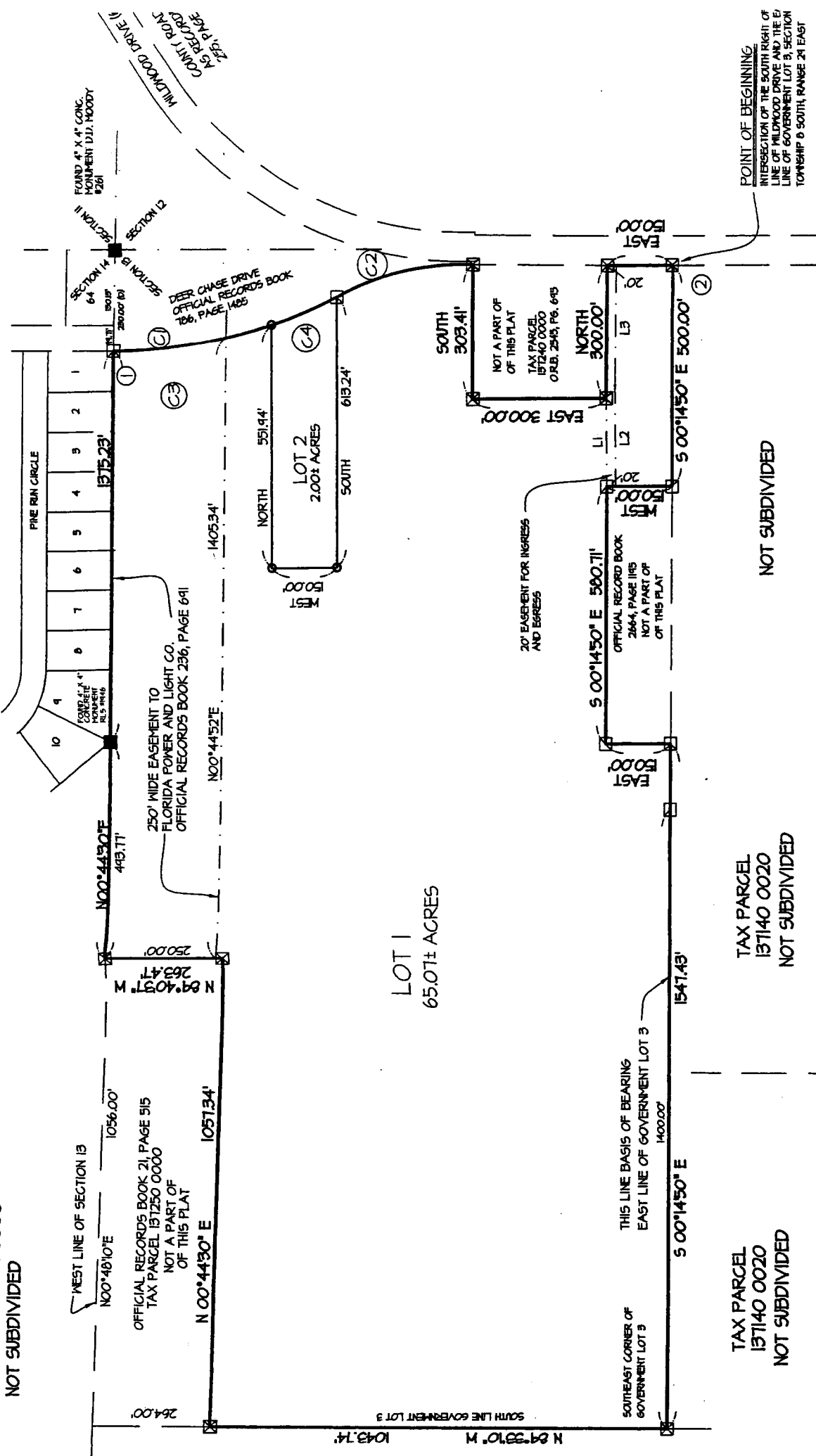
ARY FOR GEOFFREY AND CAROLYN YOUNG

HUSBAND AND WIFE

OREGOING INSTRUMENT WAS ACKNOWLEDGED BEFORE ME THIS \_\_\_\_\_  
OF \_\_\_\_\_, A.D. 2006 BY GEOFFREY AND CAROLYN YOUNG,  
AND AND WIFE, WHO IS PERSONALLY KNOWN TO ME AND TAKEN AN OATH ON  
F OF THE OWNERS.

WILDWOOD PINES AS SHOWN IN  
MAP BOOK 22, PAGES 73 - 74

TAX PARCEL 137344 0000  
NOT SUBDIVIDED



TAX PARCEL  
137140 0020  
NOT SUBDIVIDED

TAX PARCEL  
137140 0020  
NOT SUBDIVIDED

LINE TABLE		
LINE	BEARING	LENGTH
L1	N00°57'03" W	200.01'
L2	N00°52'30" W	228.00'
L3	S00°00'00" E	211.82'

CURVE TABLE

**LEGEND:**

- DENOTES 4" X 4" CONCRETE MONUMENT SET PERM L13
- ⊗ DENOTES 4" X 4" CONCRETE MONUMENT FOUND NO 11
- DENOTES 4" X 4" CONCRETE MONUMENT FOUND AG 5 N

EAST LINE OF GOVERNMENT LOT 3,  
20°14'50" E

MAPPING PURPOSES, THE GEODETIC  
DATA CONTROL MONUMENT (23-6),  
40-STATE PLANE COORDINATES

EASTING (15 FT)	
1043.74	1400.00