

RESOLUTION NO. 2006- 360
RESOLUTION OF THE BOARD OF COUNTY
COMMISSIONERS OF ST. JOHNS COUNTY, FLORIDA
APPROVING A SUBDIVISION PLAT FOR
COUNTY ROAD 2209- RUSSELL SAMPSON ROAD SEGMENT

WHEREAS, DURBIN CROSSING COMMUNITY DEVELOPMENT DISTRICT, AS OWNER, has applied to the Board of County Commissioners of St. Johns County, Florida for approval to record a subdivision plat known as COUNTY ROAD 2209-RUSSELL SAMPSON ROAD SEGMENT.

NOW, THEREFORE BE IT RESOLVED BY THE BOARD OF COUNTY COMMISSIONERS OF ST. JOHNS COUNTY, FLORIDA, as follows:

Section 1. The above-described subdivision plat and its dedicated areas depicted thereon are conditionally approved and accepted by the Board of County Commissioners of St. Johns County, Florida subject to Sections 2, 3, 4, 5 and 6.

Section 2. A Construction Bond in the amount of \$3,491,032.44, has been filed with the Clerks' office.

Section 3. A Maintenance Bond in the amount of \$1,333,834.15 will be required.

Section 4. The approval and acceptance described in Section 1 shall not take effect until the Clerk has received a title opinion, certificate, or policy pertaining to the real property that is the subject of the a forenamed subdivision plat which opinion, certificate or policy is in a form acceptable to the County Attorney or Assistant County Attorney.

Section 5. The Clerk is instructed to file and record the consent and joinder (s) to the plat executed by all mortgages identified in the title opinion or certificate of the title in Section 4.

Section 6. The approval and acceptance described in Section 1 shall not take effect until the plat has been signed by each of the following departments, person or offices:

- a) Chairman or Vice-Chairman of the Board of County Commissioners of St. Johns County, Florida;
- b) Office of the County Attorney;
- c) County Planning and Zoning Department;
- d) Office of the County Surveyor; and
- e) Clerk of Courts.

The Clerk shall not sign or accept the Plat for recording until it has been signed by each of the above persons or entities described in a) through d) above. If the plat is not signed and accepted by the Clerk for recording within 14 days from the date hereof, then the above-described conditional approval shall automatically terminate. If the plat is signed by the Clerk on or before such time, the conditions described herein shall be deemed to have been met.

ADOPTED by the Board of County Commissioners of St. Johns County, Florida, this 17th day of October, 2006.

BOARD OF COUNTY COMMISSIONERS
OF ST. JOHNS COUNTY, FLORIDA

BY: James E. Bryant

James E. Bryant, Chairman

ATTEST: Cheryl Strickland

Patricia DeGrande

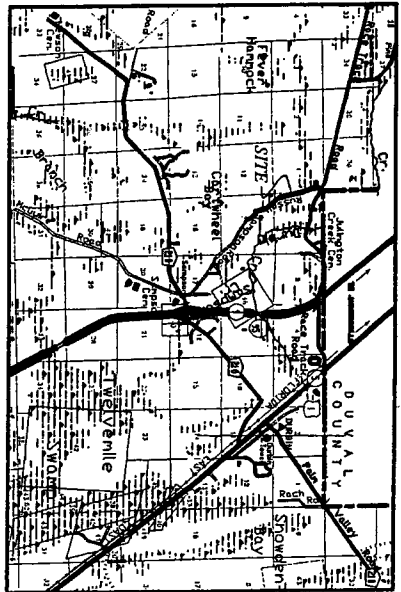
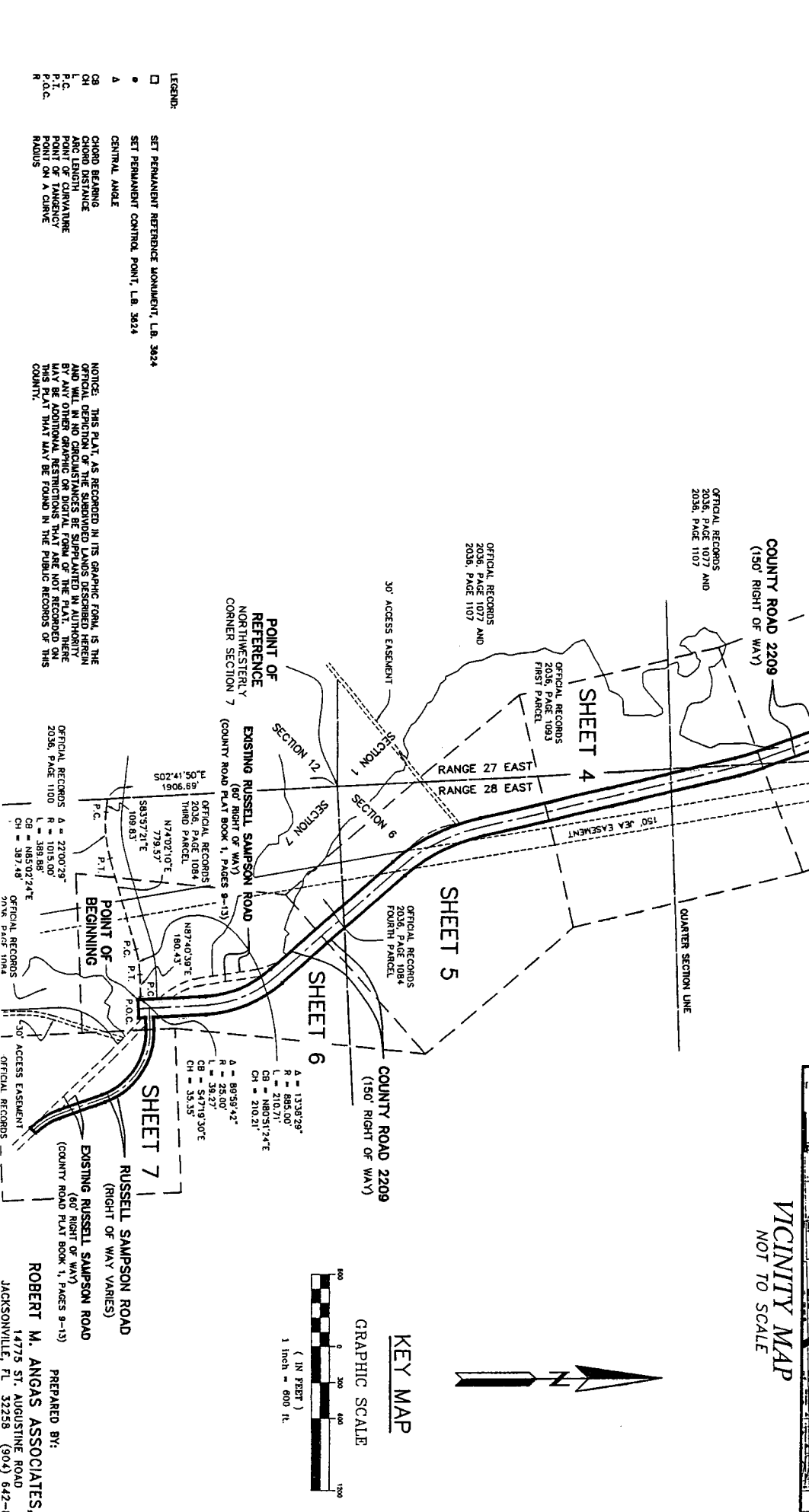
Deputy Clerk

RENDITION DATE 10-18-06

COUNTY ROAD 2209 - RUSSELL SAMPSON ROAD SEGMENT

A PORTION OF SECTION 1, TOWNSHIP 5 SOUTH, RANGE 27 EAST, TOGETHER WITH A PORTION OF SECTIONS 6 AND 7, TOWNSHIP 5 SOUTH, RANGE 28 EAST, ST. JOHNS COUNTY, FLORIDA

- NOTES:
- 1) BEARINGS SHOWN ARE REFERENCED TO THE STATE PLANE COORDINATES AS INDICATED HEREON AND ARE BASED ON THE EASTERLY LINE OF SECTION 12, TOWNSHIP 5 SOUTH, RANGE 27 EAST, AS BEING SOUTH 02° 47' 03" EAST.
 - 2) COORDINATES BASED ON GPS OBSERVATION OF STATION "DURBIN 2" AND STATION "TELZER". NATIONAL GEODESIC SURVEY 1981 ADJUSTMENT: N 2082535.4532 E 909677.0128 STATION "DURBIN 2" COORDINATES: N 2030457.8959 E 524684.1854 STATION "TELZER" COORDINATES: N 2030457.8959 E 524684.1854 COORDINATE DATUM: STATE PLANE IN U.S. SURVEY FEET (FLORIDA EAST ZONE 901, N.A.D. 1983/1991)
 - 3) PLAT BOUNDARY CORNER COORDINATE POINTS:
- | POINT | NORTHING | EASTING | DESCRIPTION |
|-------|----------------|--------------|------------------------------|
| 1 | 2,091,073.3730 | 487,753.9218 | PERMANENT REFERENCE MONUMENT |
| 2 | 2,091,628.8874 | 487,733.4235 | PERMANENT REFERENCE MONUMENT |
- 4) SECTION LINES AND QUARTER SECTION LINES DEPICTED HEREON ARE GRAPHIC REPRESENTATIONS ONLY AND DO NOT REFLECT FIELD MEASURE UNLESS OTHERWISE NOTED.



- LEGEND:
- SET PERMANENT REFERENCE MONUMENT, L.B. 3624
 - SET PERMANENT CONTROL POINT, L.B. 3624
 - CENTRAL ANGLE
 - CHORD BEARING
 - CHORD DISTANCE
 - ARC LENGTH
 - POINT OF CURVATURE
 - POINT ON A CURVE
 - P.O.C.
 - RADIUS

NOTICE: THIS PLAT, AS RECORDED IN ITS GRAPHIC FORM, IS THE OFFICIAL DEFINITION OF THE SUBDIVIDED LANDS DESCRIBED HEREIN AND WILL, IN NO CIRCUMSTANCES BE SUPPLANTED IN AUTHORITY BY ANY OTHER GRAPHIC OR DIGITAL FORM OF THE PLAT. THERE SHALL BE NO CHANGING OR DIGITAL FORM OF THE PLAT. THIS PLAT THAT MAY BE FOUND IN THE PUBLIC RECORDS OF THIS COUNTY.

KEY MAP

GRAPHIC SCALE
(IN FEET)
1 inch = 600 ft.

PREPARED BY:
ROBERT M. ANGAS ASSOCIATES, IN
14775 ST. AUGUSTINE ROAD
JACKSONVILLE, FL 32238 (904) 642-8550