

RESOLUTION NO. 2006- 81
RESOLUTION OF THE BOARD OF COUNTY
COMMISSIONERS OF ST. JOHNS COUNTY, FLORIDA
APPROVING A SUBDIVISION PLAT FOR HERITAGE PARK PARCEL E-1

WHEREAS, GMAC MODEL HOME FINANCE, INC. A VIRGINIA COPPORATION, AS OWNER, has applied to the Board of County Commissioners of St. Johns County, Florida for approval to record a subdivision plat known as HERITAGE PARK PARCEL E-1.

NOW, THEREFORE BE IT RESOLVED BY THE BOARD OF COUNTY COMMISSIONERS OF ST. JOHNS COUNTY, FLORIDA, as follows:

Section 1. The above-described subdivision plat and its dedicated areas depicted thereon are conditionally approved and accepted by the Board of County Commissioners of St. Johns County, Florida subject to Sections 2, 3, 4, 5 and 6.

Section 2. A Construction Bond, in the amount of \$538,495.00, has been filed with the Clerk of Courts.

Section 3. A Maintenance Bond, in the amount of \$299,092.35, which represents the cost of construction of the roads, drainage and utility improvements, has been filed with the Clerks' office..

Section 4. The approval and acceptance described in Section 1 shall not take effect until the Clerk has received a title opinion, certificate, or policy pertaining to the real property that is the subject of the a forenamed subdivision plat which opinion, certificate or policy is in a form acceptable to the County Attorney or Assistant County Attorney.

Section 5. The Clerk is instructed to file and record the consent and joinder (s) to the plat executed by all mortgages identified in the title opinion or certificate of the title in Section 4.

Section 6. The approval and acceptance described in Section 1 shall not take effect until the plat has been signed by each of the following departments, person or offices:

- a) Chairman or Vice-Chairman of the Board of County Commissioners of St. Johns County, Florida;
- b) Office of the County Attorney;
- c) County Planning and Zoning Department;
- d) Office of the County Surveyor; and
- e) Clerk of Courts.

The Clerk shall not sign or accept the Plat for recording until it has been signed by each of the above persons or entities described in a) through d) above. If the plat is not signed and accepted by the Clerk for recording within 14 days from the date hereof, then the above-described conditional approval shall automatically terminate. If the plat is signed by the Clerk on or before such time, the conditions described herein shall be deemed to have been met.

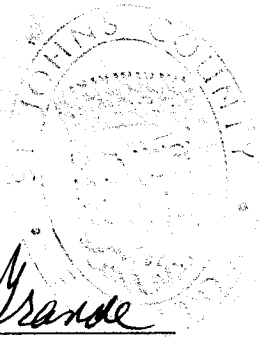
ADOPTED by the Board of County Commissioners of St. Johns County, Florida, this 21 day of March, 2006.

BOARD OF COUNTY COMMISSIONERS
OF ST. JOHNS COUNTY, FLORIDA

BY: James E. Bryant
James E. Bryant, Its Chairman

ATTEST: Cheryl Strickland

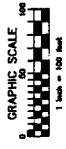
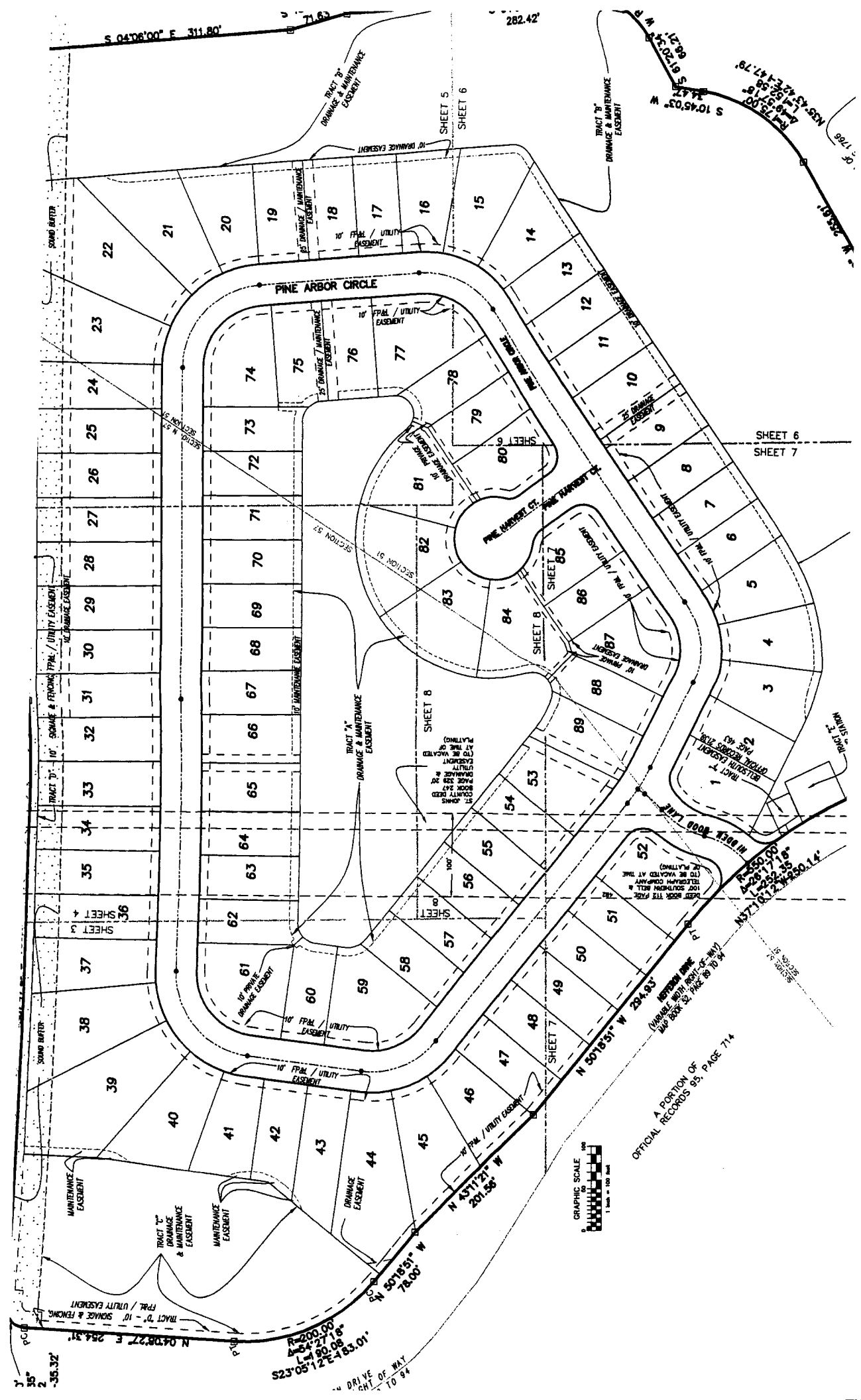
Patricia DeGrande
Deputy Clerk



RENDITION DATE 3-22-06

HERITAGE PARK PARCEL E-1

A PORTION OF SECTIONS 51 AND 57, TOWNSHIP 7 SOUTH,
RANGE 29 EAST, ST. JOHNS COUNTY, FLORIDA.



OFFICIAL RECORDS 95, PAGE 714
A PORTION OF
OFFICIAL RECORDS 95, PAGE 714

TRACT D - 10' SIDEWALK & FENCING
N 04°08'27" E 254.31'

R=200.00'
A=64°27'18"
L=149.08'
L=123.12'
83.01'

DRIVE
CH 1 OF WAY
TO 94

TRACT B - 10' SIDEWALK & FENCING
N 50°18'51" W 234.93'

TRACT 7 - 10' SIDEWALK & FENCING
N 57°10'12" W 290.14'

TRACT D - 10' SIDEWALK & FENCING
N 50°18'51" W 234.93'

TRACT D - 10' SIDEWALK & FENCING
N 50°18'51" W 234.93'

TRACT D - 10' SIDEWALK & FENCING
N 50°18'51" W 234.93'

TRACT D - 10' SIDEWALK & FENCING
N 50°18'51" W 234.93'

TRACT D - 10' SIDEWALK & FENCING
N 50°18'51" W 234.93'

TRACT D - 10' SIDEWALK & FENCING
N 50°18'51" W 234.93'

TRACT D - 10' SIDEWALK & FENCING
N 50°18'51" W 234.93'

TRACT D - 10' SIDEWALK & FENCING
N 50°18'51" W 234.93'

TRACT D - 10' SIDEWALK & FENCING
N 50°18'51" W 234.93'

TRACT D - 10' SIDEWALK & FENCING
N 50°18'51" W 234.93'

TRACT D - 10' SIDEWALK & FENCING
N 50°18'51" W 234.93'

TRACT D - 10' SIDEWALK & FENCING
N 50°18'51" W 234.93'

TRACT D - 10' SIDEWALK & FENCING
N 50°18'51" W 234.93'

TRACT D - 10' SIDEWALK & FENCING
N 50°18'51" W 234.93'

TRACT D - 10' SIDEWALK & FENCING
N 50°18'51" W 234.93'

TRACT D - 10' SIDEWALK & FENCING
N 50°18'51" W 234.93'

TRACT D - 10' SIDEWALK & FENCING
N 50°18'51" W 234.93'

TRACT D - 10' SIDEWALK & FENCING
N 50°18'51" W 234.93'

TRACT D - 10' SIDEWALK & FENCING
N 50°18'51" W 234.93'

TRACT D - 10' SIDEWALK & FENCING
N 50°18'51" W 234.93'

TRACT D - 10' SIDEWALK & FENCING
N 50°18'51" W 234.93'

TRACT D - 10' SIDEWALK & FENCING
N 50°18'51" W 234.93'

TRACT D - 10' SIDEWALK & FENCING
N 50°18'51" W 234.93'