

RESOLUTION NO. 2007- 232

A RESOLUTION OF THE BOARD OF COUNTY COMMISSIONERS OF ST. JOHNS COUNTY, FLORIDA, AMENDING ST. JOHNS COUNTY RESOLUTION 2002-46, THE CH ARNOLD ROAD MAINTENANCE MUNICIPAL SERVICE BENEFIT UNIT INITIAL ROAD ASSESSMENT RESOLUTION (INITIAL RESOLUTION), AS AMENDED BY RESOLUTION 2002-192, THE FINAL ROAD ASSESSMENT RESOLUTION TO MODIFY THE ALLOWABLE GRADING AND MAINTENANCE SERVICE.

WHEREAS, the Grading and Maintenance Service defined in the Initial Resolution does not include replacing surface material on the road, and;

WHEREAS, it is standard procedure when maintaining County dirt roads to periodically replace the surface material in spots where it has washed away. Adopting this practice on CH Arnold Road would allow for more efficient maintenance and more reliable access to the benefit area for Essential Services providers during the remaining years of the Grading and Maintenance Service, and;

WHEREAS, the Road Maintenance Assessment collected in past years has consistently exceeded the Grading and Maintenance Cost, leaving a surplus of approximately \$7,000 in reserve for maintenance.

NOW, THEREFORE BE IT RESOLVED BY THE BOARD OF COUNTY COMMISSIONERS OF ST. JOHNS COUNTY, FLORIDA, as follows:

Section 1. Terminology used in this resolution shall have its common and ordinary meaning, unless otherwise defined in the County Comprehensive Plan, Land Development Code, the Road Maintenance MSBU Ordinance 1996-53, the Initial Resolution, or by law.

Section 2. The above recitals are incorporated by reference into the body of this Resolution and such recitals are adopted as findings of fact.

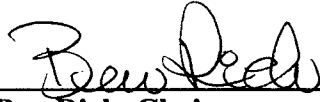
Section 3. The Initial Resolution (St. Johns County Resolution 2002-46) is hereby amended as follows:

Section 3.01 is amended to read as follows:

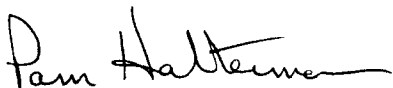
Section 3.01. GRADING AND MAINTENANCE SERVICE. The Grading and Maintenance Service to be provided is based upon grading the affected roads six times during the year, together with appurtenant annual ditch maintenance. Additional surface material may be added when determined by the County to be necessary and sufficient funds are available from Road Maintenance Assessments. Significant disruptions to these roads and/or their appurtenant drainage system shall not be considered part of the Grading and Maintenance Service and might require the imposition of an additional assessment. The annual Grading and Maintenance Service may vary due to unexpected environmental conditions.

PASSED AND ADOPTED, this 21 day of August, 2007.

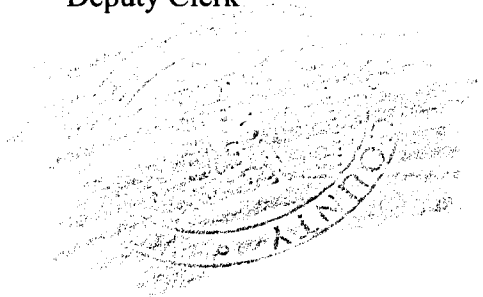
**BOARD OF COUNTY COMMISSIONERS
ST. JOHNS COUNTY, FLORIDA.**

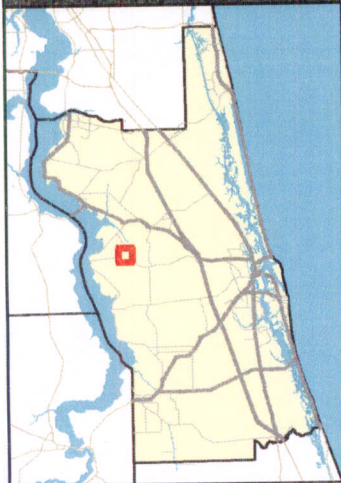
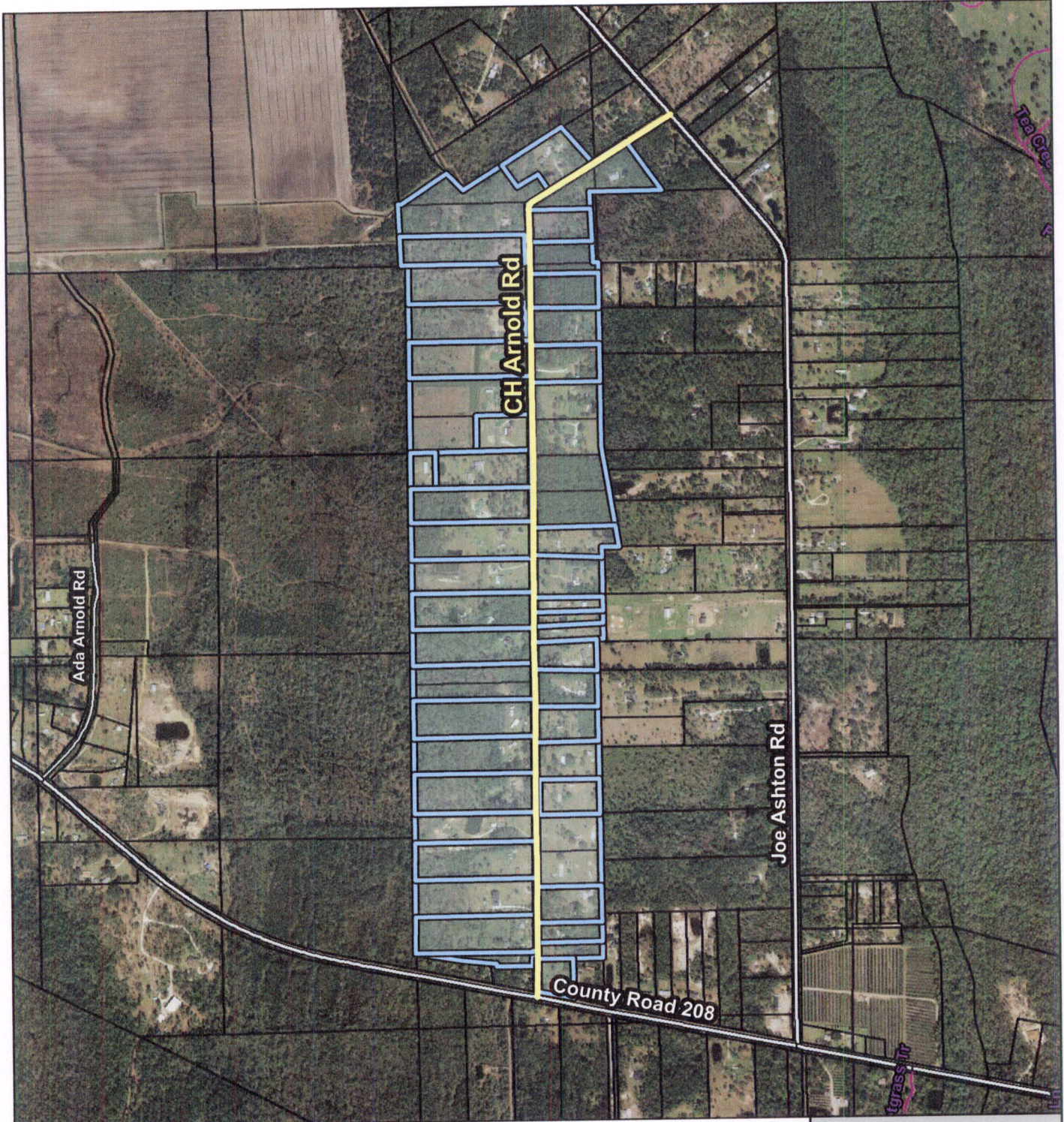
By: 
Ben Rich, Chairman

ATTEST: Cheryl Strickland, Clerk

By: 
Deputy Clerk

RENDITION DATE 8/23/07





CH Arnold Road Maintenance MSBU

0 400 800 1,200 1,600
Feet

St. Johns County
Land Mgmt Systems
Real Estate Division



Map Prepared:
July 18, 2007
(904) 209-0794



2005 Aerial Imagery

DISCLAIMER.
This map is for reference use only. Data provided are derived from multiple sources with varying levels of accuracy.