

RESOLUTION NO. 2007- 393
RESOLUTION OF THE BOARD OF COUNTY
COMMISSIONERS OF ST. JOHNS COUNTY, FLORIDA
APPROVING A PLAT FOR PONTE VEDRA INDUSTRIAL

WHEREAS, D.D.I., Inc., a Florida Corporation, AS OWNER, has applied to the Board of County Commissioners of St. Johns County, Florida for approval to record a plat known as PONTE VEDRA INDUSTRIAL.

NOW, THEREFORE BE IT RESOLVED BY THE BOARD OF COUNTY COMMISSIONERS OF ST. JOHNS COUNTY, FLORIDA, as follows:

Section 1. The above-described subdivision plat and its dedicated areas depicted thereon are conditionally approved and accepted by the Board of County Commissioners of St. Johns County, Florida subject to Sections 2, 3, 4, and 5.

Section 2. A Construction Bond in the amount of \$198,346.00 has been filed with the Clerk's Office.

Section 3. A Maintenance Bond in the amount of \$136,365.00 will be required.

Section 4. The approval and acceptance described in Section 1 shall not take effect until the Clerk has received a title opinion, certificate, or policy pertaining to the real property that is the subject of the a forenamed plat which opinion, certificate or policy is in a form acceptable to the County Attorney or Assistant County Attorney.

Section 5. The approval and acceptance described in Section 1 shall not take effect until the plat has been signed by each of the following departments, person or offices:

- a) Chairman or Vice-Chairman of the Board of County Commissioners of St. Johns County, Florida;
- b) Office of the County Attorney;
- c) County Planning and Zoning Department;
- d) Office of the County Surveyor; and
- e) Clerk of Courts.

The Clerk shall not sign or accept the Plat for recording until it has been signed by each of the above persons or entities described in a) through d) above. If the plat is not signed and accepted by the Clerk for recording within 14 days from the date hereof, then the above-described conditional approval shall automatically terminate. If the plat is signed by the Clerk on or before such time, the conditions described herein shall be deemed to have been met.

ADOPTED by the Board of County Commissioners of St. Johns County, Florida, this 11th day of December, 2007.



BOARD OF COUNTY COMMISSIONERS
OF ST. JOHNS COUNTY, FLORIDA

BY: *Thomas G. Manuel*
Thomas G. Manuel, Chairman

RENDITION DATE 12/14/07

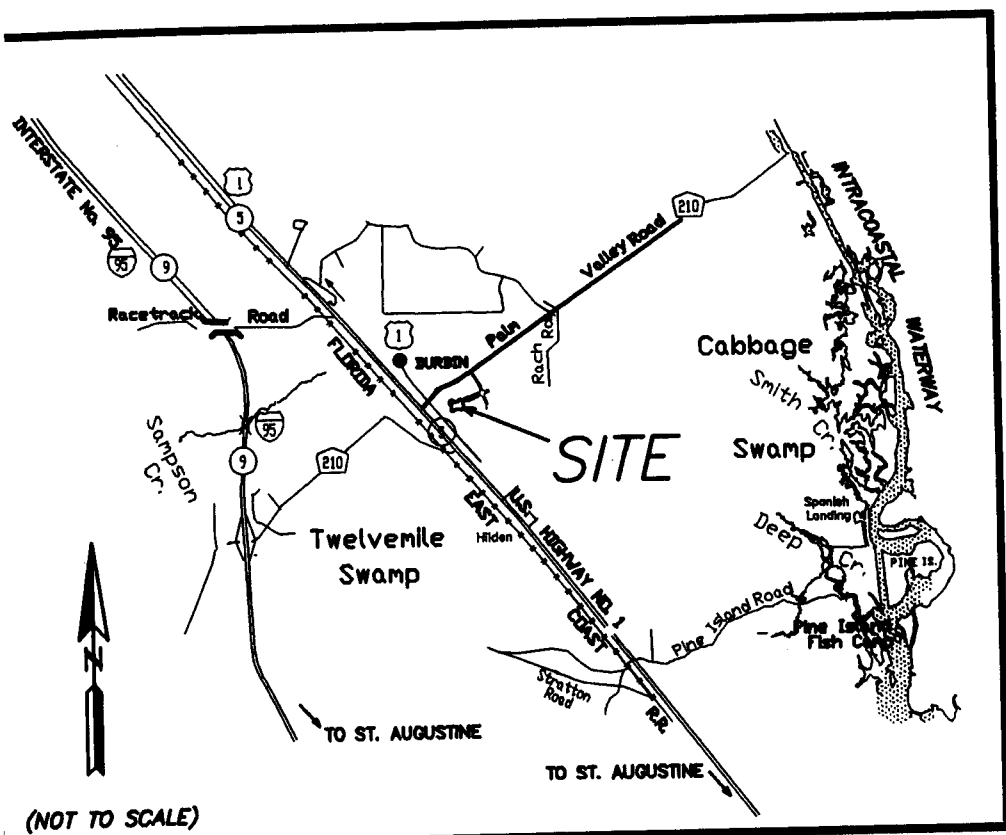
ATTEST: Cheryl Strickland

Pam Haltem

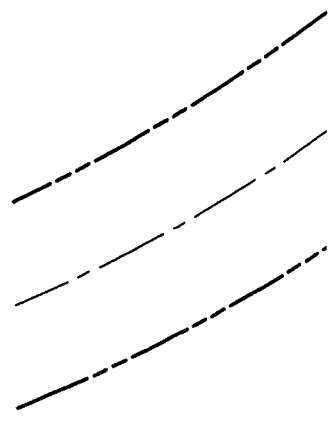
Deputy Clerk

PONTE VEDRA INDUSTRIAL

A PORTION OF SECTIONS 2 AND 11, TOWNSHIP 5 SOUTH, RANGE 28 EAST, ST. JOHNS COUNTY, FLORIDA



VICINITY MAP



CURVE	CENTRAL ANGLE
C1	58°02'03"
C2	26°04'07"
C3	58°02'03"

ES:

COORDINATES SHOWN ARE REFERENCED TO THE STATE PLANE COORDINATES AS INDICATED IN THE PREVIOUS PLAT AND ARE BASED ON THE WESTERLY RIGHT OF WAY LINE OF WALDEN CHASE LANE BEING SOUTH 19°58'54" EAST.

NOTICE: THIS PLAT, AS RECORDED IN ITS GRAPHIC FORM, IS THE OFFICIAL DEPICTION OF THE SUBDIVIDED LANDS DESCRIBED HEREIN AND WILL IN NO CIRCUMSTANCES BE SUPPLANTED IN AUTHORITY BY ANY OTHER GRAPHIC OR DIGITAL FORM OF THE PLAT. THERE MAY BE ADDITIONAL RESTRICTIONS THAT ARE NOT DEPICTED ON THIS PLAT THAT MAY BE FOUND IN THE PUBLIC RECORDS OF THIS COUNTY.

WETLANDS DEPICTED HERON PER PREVIOUS SURVEY BY ROBERT M. ANGAS, INC., FILE No. 119A-03, DATED JUNE 14, 2006.

COORDINATES BASED ON GPS OBSERVATION OF STATION "DURBIN 2" AND STATION "ELLZEY", NATIONAL GEODETIC SURVEY 1991 ADJUSTMENT.

STATION "DURBIN 2" COORDINATES: N 2092535.8352 E 509677.0129
 STATION "ELLZEY" COORDINATES: N 2030457.8959 E 524684.1854

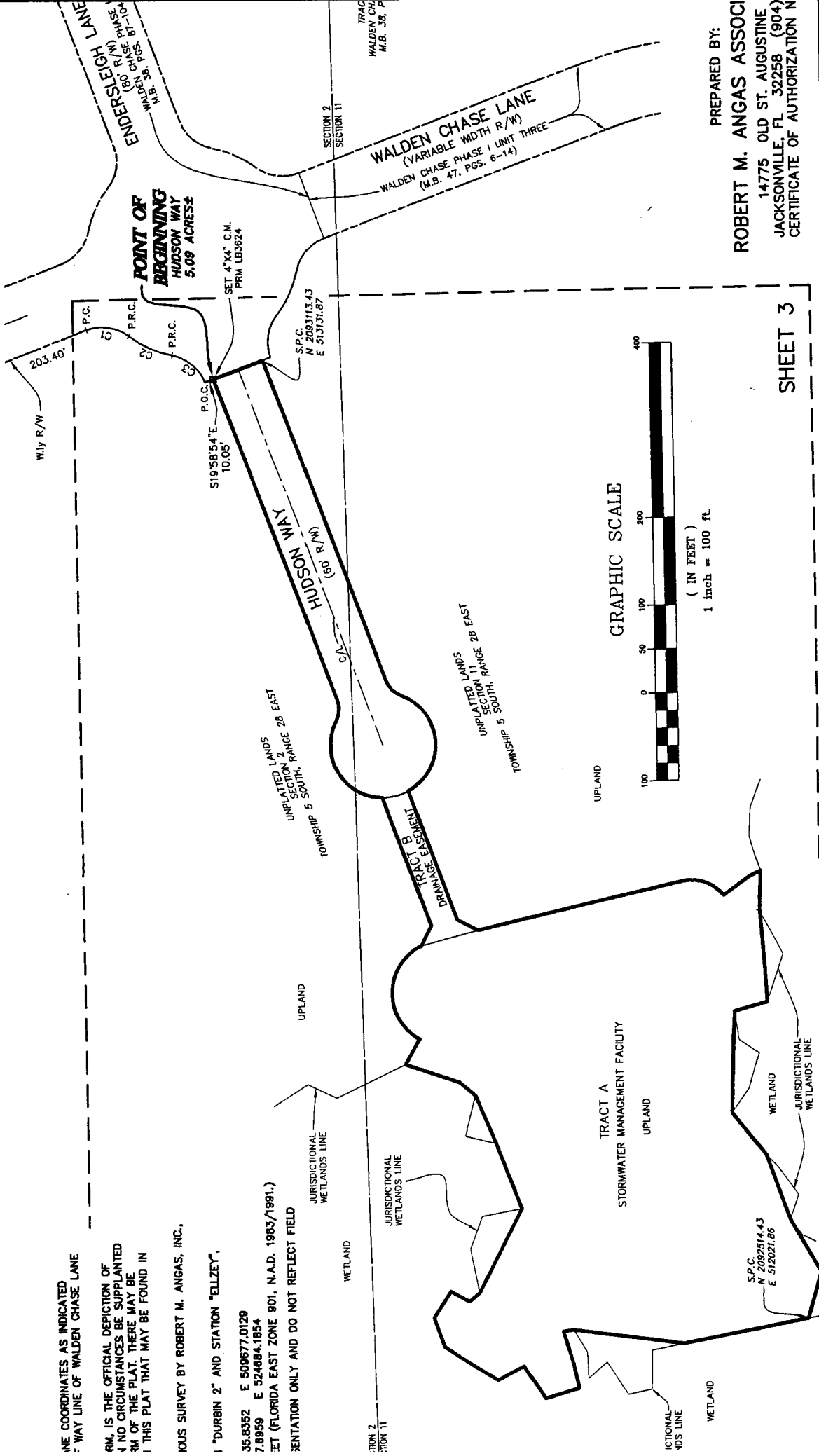
PONTE VEDRA INDUSTRIAL

A PORTION OF SECTIONS 2 AND 11, TOWNSHIP 5 SOUTH, RANGE 28 EAST, ST. JOHNS COUNTY, FLORIDA.

UNPLATTED LANDS
SECTION 2
TOWNSHIP 5 SOUTH, RANGE 28 EAST

THE COORDINATES AS INDICATED
ARE THE WAY LINE OF WALDEN CHASE LANE
AND IS THE OFFICIAL DEPICTION OF
THE PROPERTY. NO CIRCUMSTANCES BE SUPPLANTED
BY THIS PLAT. THERE MAY BE
MISPLATINGS THAT MAY BE FOUND IN
THIS PLAT THAT MAY BE FOUND IN

THE SURVEY BY ROBERT M. ANGAS, INC.,
AT "DURBIN 2" AND STATION "ELZEY",
35.8352 E 509677.0129
7.8959 E 524684.1854
SET (FLORIDA EAST ZONE 901, N.A.D. 1983/1991.)
FOR INFORMATION ONLY AND DO NOT REFLECT FIELD



PREPARED BY:
ROBERT M. ANGAS ASSOCIATES
14775 OLD ST. AUGUSTINE
JACKSONVILLE, FL 32256 (904)
CERTIFICATE OF AUTHORIZATION N

SHEET 3