

RESOLUTION NO. 2007- 42
RESOLUTION OF THE BOARD OF COUNTY
COMMISSIONERS OF ST. JOHNS COUNTY, FLORIDA
APPROVING A PLAT FOR COUNTY ROAD 2209 – NORTH SEGMENT

WHEREAS, DURBIN CROSSING COMMUNITY DEVELOPMENT DISTRICT, and TERRAPOINTE, LLC, A DELAWARE LIMITED LIABILITY COMPANY, AS OWNERS, have applied to the Board of County Commissioners of St. Johns County, Florida for approval to record a subdivision plat known as COUNTY ROAD 2209 – NORTH SEGMENT.

NOW, THEREFORE BE IT RESOLVED BY THE BOARD OF COUNTY COMMISSIONERS OF ST. JOHNS COUNTY, FLORIDA, as follows:

Section 1. The above-described subdivision plat and its dedicated areas depicted thereon are conditionally approved and accepted by the Board of County Commissioners of St. Johns County, Florida subject to Sections 2, 3, 4, and 5.

Section 2. A Construction Bond In the amount of \$8,522,369.46 has been filed with the Clerk's Office.

Section 3. A Maintenance Bond in the amount of \$1,342,098.15 will not be required.

Section 4. The approval and acceptance described in Section 1 shall not take effect until the Clerk has received a title opinion, certificate, or policy pertaining to the real property that is the subject of the a forenamed subdivision plat which opinion, certificate or policy is in a form acceptable to the County Attorney or Assistant County Attorney.

Section 5. The approval and acceptance described in Section 1 shall not take effect until the plat has been signed by each of the following departments, person or offices:

- a) Chairman or Vice-Chairman of the Board of County Commissioners of St. Johns County, Florida;
- b) Office of the County Attorney;
- c) County Planning and Zoning Department;
- d) Office of the County Surveyor; and
- e) Clerk of Courts.

The Clerk shall not sign or accept the Plat for recording until it has been signed by each of the above persons or entities described in a) through d) above. If the plat is not signed and accepted by the Clerk for recording within 14 days from the date hereof, then the above-described conditional approval shall automatically terminate. If the plat is signed by the Clerk on or before such time, the conditions described herein shall be deemed to have been met.

ADOPTED by the Board of County Commissioners of St. Johns County, Florida, this 6th day of February, 2007.

BOARD OF COUNTY COMMISSIONERS
OF ST. JOHNS COUNTY, FLORIDA

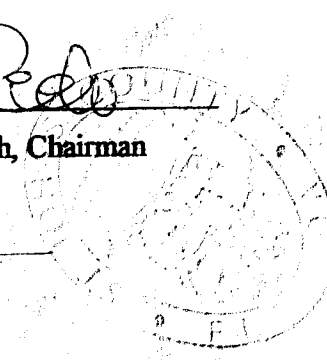
BY: Ben Rich
Ben Rich, Chairman

ATTEST: Cheryl Strickland

Pam Halterman

Deputy Clerk

DATE 2/8/07



STATE PLANE COORDINATES AS INDICATED HEREON
 OF SECTION 12, TOWNSHIP 3 SOUTH, RANGE 27 EAST,

OF STATION "DUBBIN 2" AND STATION "ELLZER",

ENT. N 2092535.8552 E 509877.0128

ES: N 2030457.6959 E 524684.1854

SURVEY FEET (FLORIDA EAST ZONE 801, M.A.D. 1983/1991.)

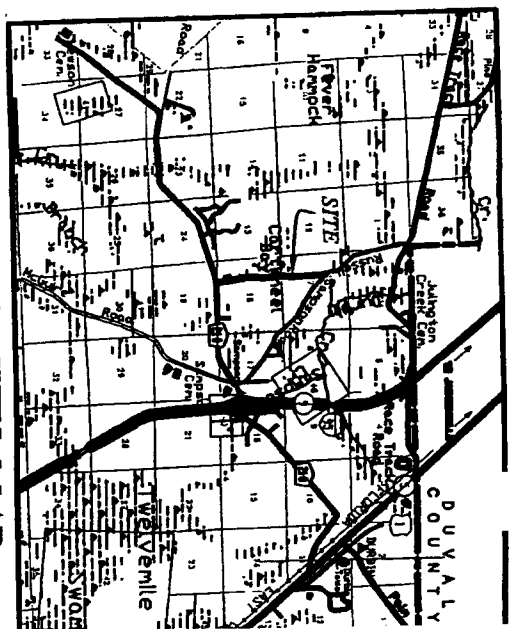
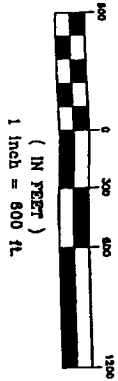
ITS:

NO.	DESCRIPTION
5.9216	PERMANENT REFERENCE MONUMENT
4.8332	PERMANENT REFERENCE MONUMENT

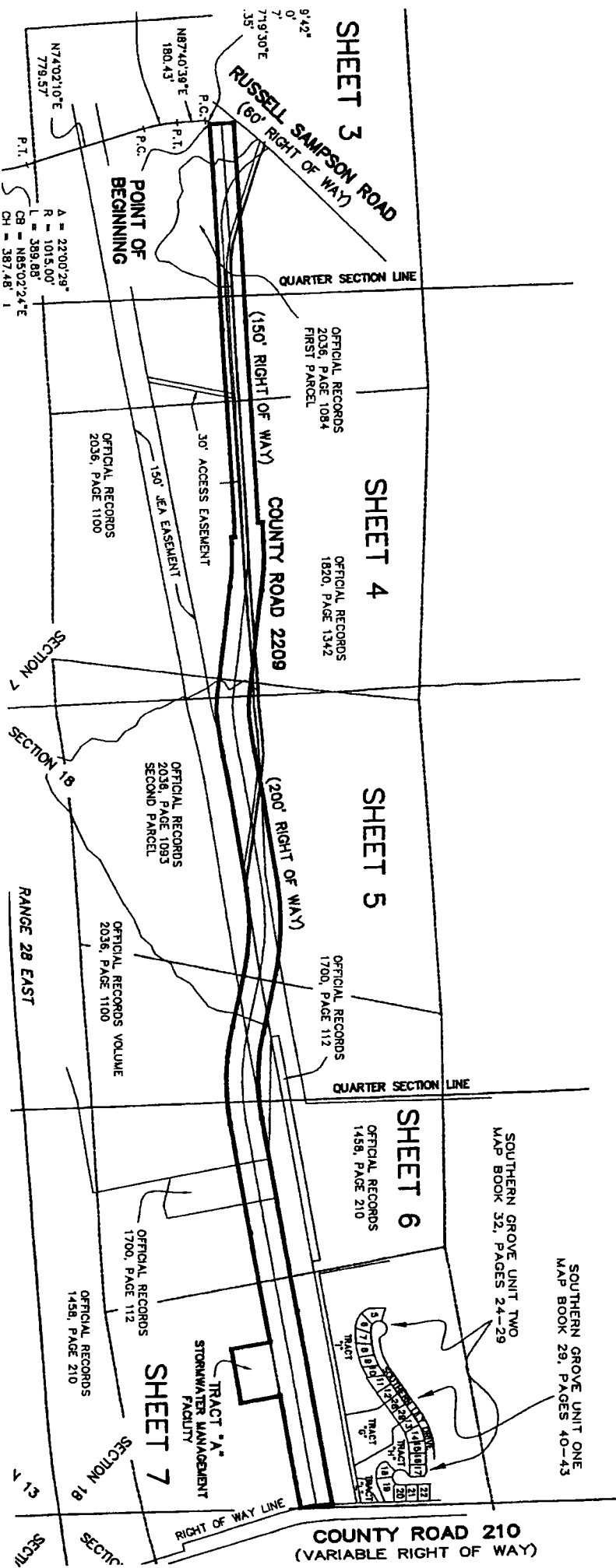
ES DEPICTED HEREON ARE GRAPHIC REPRESENTATIONS
 IE UNLESS OTHERWISE NOTED.

KEY MAP

GRAPHIC SCALE



VICINITY MAP NOT TO SCALE



SOUTHERN GROVE UNIT TWO
 MAP BOOK 32, PAGES 24-29

SOUTHERN GROVE UNIT ONE
 MAP BOOK 29, PAGES 40-43

COUNTY ROAD 210
 (VARIABLE RIGHT OF WAY)

POINT OF BEGINNING
 A = 22'00" 29°
 R = 1015.00'
 L = 389.88'
 CB = N85°02'24"E
 CH = 387.48' 1