

RESOLUTION NO. 2007- 50
RESOLUTION OF THE BOARD OF COUNTY
COMMISSIONERS OF ST. JOHNS COUNTY, FLORIDA
APPROVING A SUBDIVISION PLAT FOR ESTATES OF TUSCANY PHASE 2A-1

WHEREAS, DELTONA CORPORATION, A DELAWARE CORPORATION, has applied to the Board of County Commissioners of St. Johns County, Florida for approval to record a subdivision plat known as ESTATES OF TUSCANY PHASE 2A-1

NOW, THEREFORE BE IT RESOLVED BY THE BOARD OF COUNTY COMMISSIONERS OF ST. JOHNS COUNTY, FLORIDA, as follows:

Section 1. The above-described subdivision plat and its dedicated areas depicted thereon are conditionally approved and accepted by the Board of County Commissioners of St. Johns County, Florida subject to Sections 2, 3, 4, 5 and 6.

Section 2. A Construction Bond in the amount of \$54,000.00 has been filed with the Clerk of Courts office.

Section 3. A Maintenance Bond in the amount of \$33,750.00 will be required. The maintenance bond language will be that required by the ordinance in effect at the time the maintenance bond is provided.

Section 4. The approval and acceptance described in Section 1 shall not take effect until the Clerk has received a title opinion, certificate, or policy pertaining to the real property that is the subject of the a forenamed subdivision plat which opinion, certificate or policy is in a form acceptable to the County Attorney or Assistant County Attorney.

Section 5. The Clerk is instructed to file and record the consent and joinder (s) to the plat executed by all mortgages identified in the title opinion or certificate of the title in Section 4.

Section 6. The approval and acceptance described in Section 1 shall not take effect until the plat has been signed by each of the following departments, person or offices:

- a) Chairman or Vice-Chairman of the Board of County Commissioners of St. Johns County, Florida;
- b) Office of the County Attorney;
- c) County Planning and Zoning Department;
- d) Office of the County Surveyor; and
- e) Clerk of Courts.

The Clerk shall not sign or accept the Plat for recording until it has been signed by each of the above persons or entities described in a) through d) above. If the plat is not signed and accepted by the Clerk for recording within 14 days from the date hereof, then the above-described conditional approval shall automatically terminate. If the plat is signed by the Clerk on or before such time, the conditions described herein shall be deemed to have been met.

ADOPTED by the Board of County Commissioners of St. Johns County, Florida, this 20 day of February, 2007.

BOARD OF COUNTY COMMISSIONERS
OF ST. JOHNS COUNTY, FLORIDA

BY: Ben Rich

Ben Rich, Chairman

ATTEST: Cheryl Strickland

Pam Halterma

Deputy Clerk

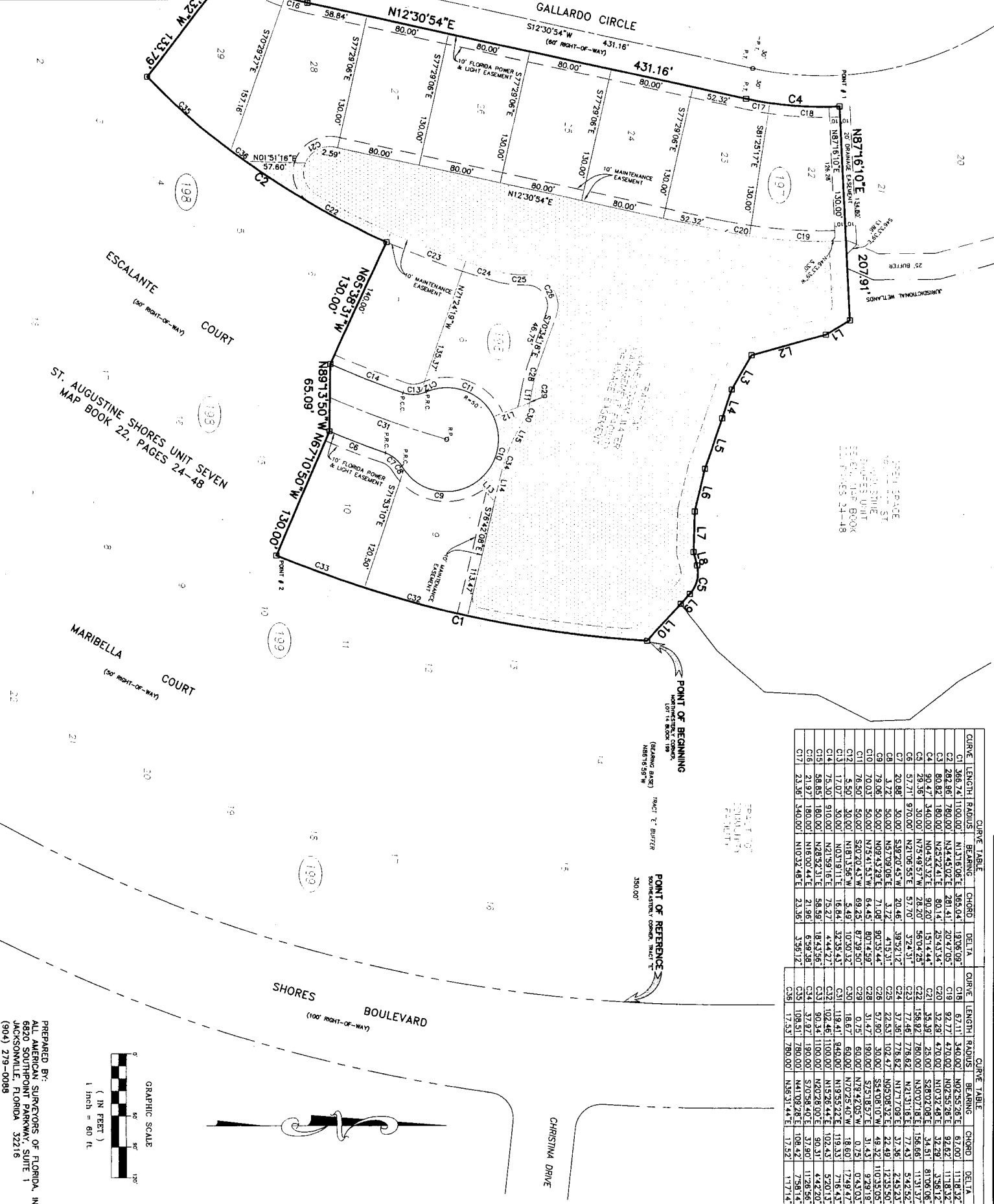
EXECUTION DATE

2/22/07

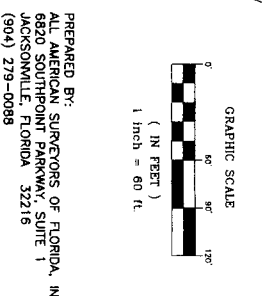
ST. AUGUSTINE SHORES UNIT SEVEN
 MAP BOOK 22, PAGES 24-48

LINE TABLE

LINE	LENGTH	BEARING
L1	26.89	N51°11'42"W
L2	74.05	S19°20'21"E
L3	38.28	S90°22'01"E
L4	51.72	S71°24'40"E
L5	42.36	S72°42'48"E
L6	39.16	S88°23'28"E
L7	13.81	N12°02'51"E
L8	12.88	S47°44'45"E
L9	48.21	S47°47'20"E
L10	9.36	S80°03'36"E
L11	37.11	S20°42'43"E
L12	25.99	S48°13'40"W
L13	26.27	S76°42'08"E
L14	18.23	S81°30'47"E



CURVE TABLE				CURVE TABLE							
CURVE	LENGTH	RADIUS	BEARING	CHORD	DELTA	CURVE	LENGTH	RADIUS	BEARING	CHORD	DELTA
C1	366.74	1100.00	N13°16'06"E	365.04	19°05'08"	C18	67.11	340.00	N02°55'26"E	67.00	11°18'32"
C2	282.96	780.00	N34°45'02"E	281.41	20°47'08"	C19	92.77	470.00	N02°55'26"E	92.62	11°18'32"
C3	80.82	180.00	N25°22'41"E	80.14	25°43'34"	C20	32.29	470.00	N02°55'26"E	32.29	3°58'12"
C4	90.47	340.00	N04°53'32"E	90.20	15°14'44"	C21	35.39	280.00	S80°02'48"E	34.51	81°06'08"
C5	29.36	30.00	N75°09'57"W	28.20	56°04'29"	C22	158.92	780.00	N30°07'18"E	156.66	11°31'37"
C6	57.71	970.00	N21°06'55"E	57.70	3°24'31"	C23	77.46	776.62	N21°31'16"E	77.43	5°42'52"
C7	20.88	30.00	S39°20'45"W	20.46	39°52'12"	C24	37.36	776.62	N17°17'08"E	37.36	2°49'23"
C8	3.72	50.00	N57°09'06"E	3.72	41°51'31"	C25	22.53	102.47	N65°08'32"E	22.49	12°55'05"
C9	79.06	50.00	N09°43'29"E	71.08	80°35'44"	C26	51.47	190.00	S75°18'57"E	31.43	9°28'18"
C10	70.03	50.00	N75°41'55"W	64.45	80°14'59"	C27	0.75	60.00	N70°25'40"W	0.75	0°43'03"
C11	76.50	50.00	S60°20'43"W	69.45	67°39'50"	C28	18.67	60.00	N70°25'40"W	18.60	17°49'47"
C12	5.50	30.00	N81°13'56"W	5.49	10°30'32"	C29	119.41	940.00	N15°26'44"E	119.33	7°16'43"
C13	17.07	30.00	N03°19'11"E	16.84	32°35'43"	C30	102.46	1100.00	N15°26'44"E	102.43	7°16'43"
C14	98.63	180.00	N28°52'31"E	98.59	18°43'58"	C31	90.53	1100.00	N15°26'44"E	90.51	4°42'20"
C15	21.32	180.00	N18°00'44"E	21.89	6°58'38"	C32	32.87	280.00	S70°58'40"E	32.90	11°28'56"
C16	23.50	350.00	N10°32'48"E	23.50	3°58'12"	C33	109.51	780.00	N41°03'48"E	108.42	7°28'14"
C17	23.50	350.00	N10°32'48"E	23.50	3°58'12"	C34	17.52	780.00	N58°31'44"E	17.52	11°17'14"



PREPARED BY:
 ALL AMERICAN SURVEYORS OF FLORIDA, INC.
 6820 SOUTHPOINT PARKWAY, SUITE 1
 JACKSONVILLE, FLORIDA 32216
 (904) 279-0088