

RESOLUTION NO. 2008 72  
RESOLUTION OF THE BOARD OF COUNTY  
COMMISSIONERS OF ST. JOHNS COUNTY, FLORIDA  
APPROVING A SUBDIVISION PLAT FOR SAMARA LAKES PARCEL C PHASE TWO

WHEREAS, SAMARA LAKES, LLC, A LIMITED LIABILITY COMPANY, AS OWNER, has applied to the Board of County Commissioners of St. Johns County, Florida for approval to record a subdivision plat known as SAMARA LAKES PARCEL C PHASE TWO.

NOW, THEREFORE BE IT RESOLVED BY THE BOARD OF COUNTY COMMISSIONERS OF ST. JOHNS COUNTY, FLORIDA, as follows:

Section 1. The above-described subdivision plat and its dedicated areas depicted thereon are conditionally approved and accepted by the Board of County Commissioners of St. Johns County, Florida subject to Sections 2, 3, 4, 5 and 6.

Section 2. A Construction Bond in the amount of \$1,659,129.75, has been filed with the Clerk of Courts office.

Section 3. A Maintenance Bond, in the amount of \$650,691.75 will be required. The maintenance bond language will be that required by the ordinance in effect at the time the maintenance bond is provided.

Section 4. The approval and acceptance described in Section 1 shall not take effect until the Clerk has received a title opinion, certificate, or policy pertaining to the real property that is the subject of the a forenamed subdivision plat which opinion, certificate or policy is in a form acceptable to the County Attorney or Assistant County Attorney.

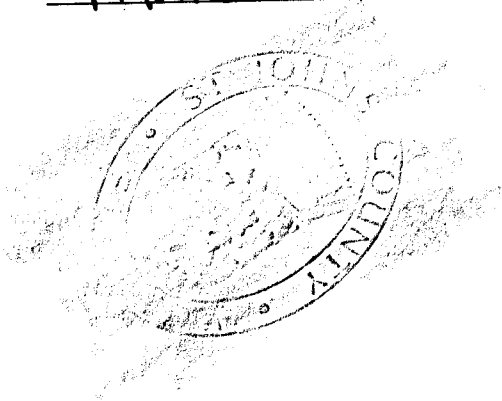
Section 5. The Clerk is instructed to file and record the consent and joinder (s) to the plat executed by all mortgages identified in the title opinion or certificate of the title in Section 4.

Section 6. The approval and acceptance described in Section 1 shall not take effect until the plat has been signed by each of the following departments, person or offices:

- a) Chairman or Vice-Chairman of the Board of County Commissioners of St. Johns County, Florida;
- b) Office of the County Attorney;
- c) County Planning and Zoning Department;
- d) Office of the County Surveyor; and
- e) Clerk of Courts.

The Clerk shall not sign or accept the Plat for recording until it has been signed by each of the above persons or entities described in a) through d) above. If the plat is not signed and accepted by the Clerk for recording within 14 days from the date hereof, then the above-described conditional approval shall automatically terminate. If the plat is signed by the Clerk on or before such time, the conditions described herein shall be deemed to have been met.

ADOPTED by the Board of County Commissioners of St. Johns County, Florida, this 18 day of March, 2008



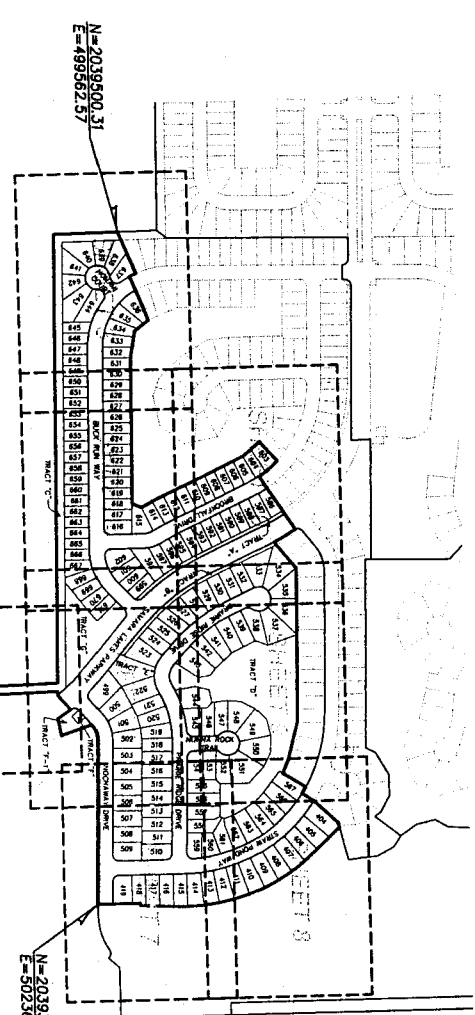
BOARD OF COUNTY COMMISSIONERS  
OF ST. JOHNS COUNTY, FLORIDA

BY: Thomas G. Manuel  
Thomas G. Manuel, Its Chairman

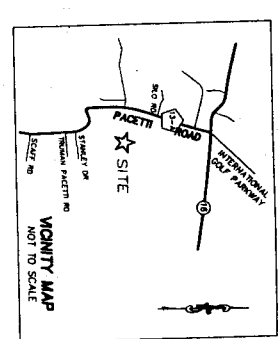
ATTEST: Cheryl Strickland

RENDITION DATE 3/20/08

Pam Halterman  
Deputy Clerk



KEY MAP ONLY. SEE SHEETS 3  
 THROUGH 10 FOR DETAIL



**LEGEND:**

□	SETBACK CONCRETE REMAINANT
○	REFERENCE MONUMENT (LS 1704)
■	FOOTING MONUMENT (LS 1704)
●	SETBACK MONUMENT (LS 1704)
⊙	SET REMAINANT CONTROL POINT (LS 1704)
⊖	MONUMENT
L	LINE LENGTH
CL	CHORD LENGTH
F/M	FOOT OF MARY
PC	POINT OF CURVATURE
PI	POINT OF INTERSECTION
PO	POINT OF BEGINNING
POB	POINT OF BEGINNING
BL	BOUNDARY RESTRICTION LINE
(D)	DIAGONAL LINE
(O)	OVERALL
(D)	DISTANCE TO EXISTENT
FP	FLOOD POWER & LIGHT
AP	ADJACENT POWER & LIGHT
OR	OPTIONAL RECORDS BLOCK OR VOLUME



SHEET 6

**NOTICE:** THIS PLAT, AS RECORDED IN ITS GRAPHIC FORM, IS THE OFFICIAL DEPICTION OF THESE SUBDIVIDED LANDS DESCRIBED HEREIN AND WILL IN NO MANNER BE SUPERSEDED OR SUPPLANTED IN AUTHORITY BY ANY OTHER GRAPHIC OR INSTRUMENTAL RECORDS. THERE MAY BE ADDITIONAL RESTRICTIONS THAT ARE NOT RECORDED ON THIS PLAT THAT MAY BE FOUND IN THE PUBLIC RECORDS OF THIS COUNTY, BY SECTION 177.091 (27), FLORIDA STATUTES.

- NOTES:**
1. BEARING REFERENCE: S89°45'45"E FOR SOUTHERLY R/W LINE OF STRAW POND MAY BEB PLAT OF SAMARA LAKES PARCEL B PHASE TWO, MAP BOOK 59, PAGES 1-7.
  2. STATE PLANE COORDINATES SHOWN WITH VALUES IN FEET DECIMALS THEREOF BASED ON NORTH AMERICAN DATUM 1983. THE STATE PLANE COORDINATES FOR THE EAST ZONE, HOLDING TO VALUES SHOWN ON ST. JOHNS COUNTY AMERICAN CONTROL PROJECT DATED SEPTEMBER 1994 THROUGH FEBRUARY 1999 FOR MONUMENTS 6069 & 6070. THE INTENDED USE OF THESE COORDINATES IS FOR GIS BASE MAPPING PURPOSES.
  3. TOTAL LOTS=171.

PREPARED BY:  
**CLARSON & ASSOCIATES, INC.**  
 PROFESSIONAL LAND SURVEYORS  
 1843 WALDO AVENUE  
 JACKSONVILLE, FLORIDA, 32207  
 PHONE: (904)-998-2623