

RESOLUTION NO. 2008- 88
RESOLUTION OF THE BOARD OF COUNTY
COMMISSIONERS OF ST. JOHNS COUNTY, FLORIDA
APPROVING A SUBDIVISION PLAT FOR OLD MOULTRIE VILLAGE

WHEREAS, LAB INVESTMENTS, INC., a FLORIDA CORPORATION, AS OWNER, has applied to the Board of County Commissioners of St. Johns County, Florida for approval to record a subdivision plat known as OLD MOULTRIE VILLAGE.

NOW, THEREFORE BE IT RESOLVED BY THE BOARD OF COUNTY COMMISSIONERS OF ST. JOHNS COUNTY, FLORIDA, as follows:

Section 1. The above-described subdivision plat and its dedicated areas depicted thereon are conditionally approved and accepted by the Board of County Commissioners of St. Johns County, Florida subject to Sections 2, 3, 4, 5 and 6.

Section 2. A Construction Bond, in the amount of \$176,205.00 has been filed with the Clerks' office.

Section 3. A Maintenance Bond in the amount of \$176,205.00 will be required. The maintenance bond language will be that required by the ordinance in effect at the time the maintenance bond is provided.

Section 4. The approval and acceptance described in Section 1 shall not take effect until the Clerk has received a title opinion, certificate, or policy pertaining to the real property that is the subject of the a forenamed subdivision plat which opinion, certificate or policy is in a form acceptable to the County Attorney or Assistant County Attorney.

Section 5. The Clerk is instructed to file and record the consent and joinder (s) to the plat executed by all mortgages identified in the title opinion or certificate of the title in Section 4.

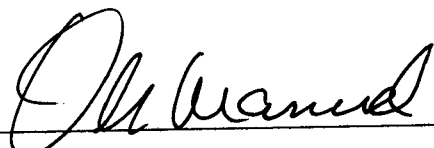
Section 6. The approval and acceptance described in Section 1 shall not take effect until the plat has been signed by each of the following departments, person or offices:

- a) Chairman or Vice-Chairman of the Board of County Commissioners of St. Johns County, Florida;
- b) Office of the County Attorney;
- c) County Planning and Zoning Department;
- d) Office of the County Surveyor; and
- e) Clerk of Courts.

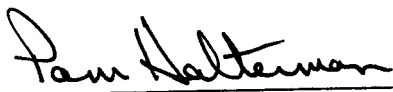
The Clerk shall not sign or accept the Plat for recording until it has been signed by each of the above persons or entities described in a) through d) above. If the plat is not signed and accepted by the Clerk for recording within 14 days from the date hereof, then the above-described conditional approval shall automatically terminate. If the plat is signed by the Clerk on or before such time, the conditions described herein shall be deemed to have been met.

ADOPTED by the Board of County Commissioners of St. Johns County, Florida, this 1st day of April, 2008.

BOARD OF COUNTY COMMISSIONERS
OF ST. JOHNS COUNTY, FLORIDA

BY: 
Thomas G. Manuel, Chairman

ATTEST: Cheryl Strickland

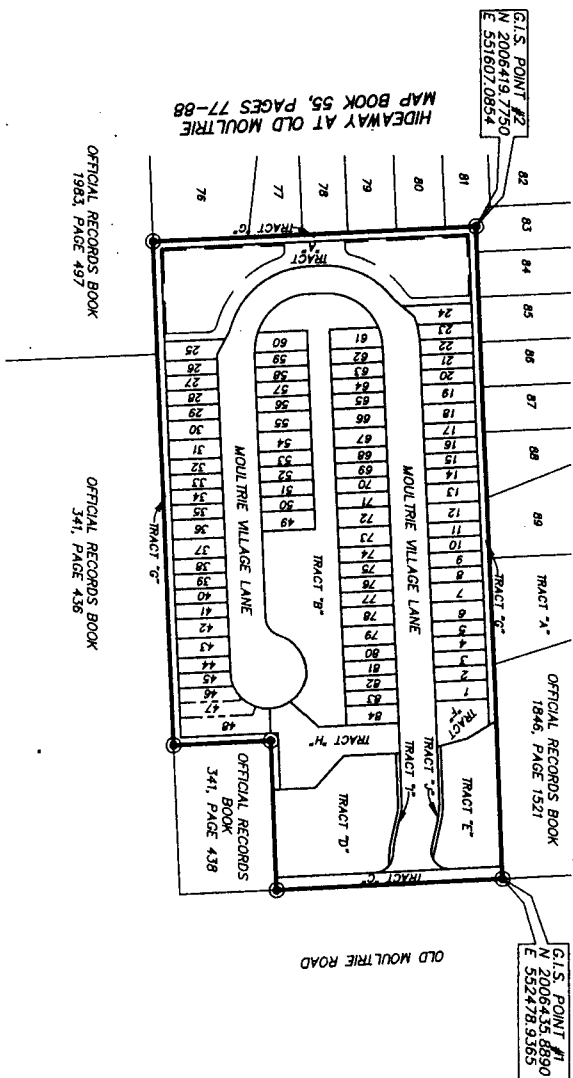

Deputy Clerk

RENDITION DATE 4/4/08

OLD MOULTRIE VILLAGE

Being a portion of Government Lot 4, Section 36, Township 7 South, Range 29 East
St. Johns County, Florida.

HIDEAWAY AT OLD MOULTRIE
MAP BOOK 55, PAGES 77-88



Point	Northing	Easting	Description
1	2006435.8890	552478.3355	PPM - NE Corner Tract "C"
2	2006419.7750	551607.0854	PPM - SW Corner Tract "C"

SCALE: 1" = 200'

A north arrow pointing upwards and a graphic scale bar below it. The scale bar is marked with 0, 100, 200, and 400 feet. Below the scale bar, the text reads 'GRAPHIC SCALE 1"=200\''.

PREPARED BY:
RICHARD A. MILLER & ASSOCIATES
PROFESSIONAL LAND SURVEYORS
6701 BEACH BLVD., SUITE #200
JACKSONVILLE, FLORIDA 32216
FAX (904) 721-5758
TELEPHONE (904) 721-1226