

RESOLUTION NO. 2009- 264

**A RESOLUTION BY THE BOARD OF COUNTY COMMISSIONERS OF ST. JOHNS COUNTY, FLORIDA, APPROVING AND AUTHORIZING ADJUSTMENTS OF CERTAIN SPEED ZONES ON COUNTY ROAD 13 AS DEPICTED ON MAPS OF NUMERICAL LIMITS AND LENGTH OF RESPECTIVE SPEED ZONES PREPARED BY ST JOHNS COUNTY ENGINEERING DIVISION ; AND PROVIDING AN EFFECTIVE DATE.**

**WHEREAS**, Florida Statute 316.189 requires an Engineering Investigation and approval of proposed speed zone adjustments by action of the Commission; and

**WHEREAS**, the County Engineering Division/ Traffic Operations Section has conducted an Engineering Investigation of roadway features including spacing of residential driveways, roadway curvature, lane and shoulder width and potential impact of these features on roadway safety in relation to existing speed limits and zone lengths; and

**WHEREAS**, adjustments in the numerical limit and length of certain speed zones on County Road 13 are justified due to the potential impact of the above referenced roadway features on highway safety and operations; and

**WHEREAS**, the recommended adjustments to existing speed zones on County Road 13 will be beneficial to highway safety and operations.

**NOW, THEREFORE, BE IT RESOLVED BY THE BOARD OF COUNTY COMMISSIONERS OF ST. JOHNS COUNTY, FLORIDA, AS FOLLOWS:**

**Section 1.** The above recitals are hereby incorporated into the body of this Resolution, and are adopted as Findings of Fact.

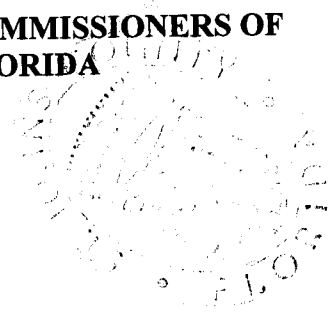
**Section 2.** The Board of County Commissioners hereby approves the attached speed zoning maps and straight line diagrams prepared by St Johns County Engineering Division/Traffic Operations Section authorizing the County Engineer, or designee, to implement the respective speed zone adjustments.

**Section 3.** This Resolution shall become effective immediately upon its adoption.

**Section 4.** To the extent there are typographical or administrative errors that do not change the tone, tenor, or concept of this resolution, then this resolution may be revised without subsequent approval of the Board of County Commissioners.

**PASSED AND ADOPTED** by the Board of County Commissioners of St. Johns County, Florida, this 6<sup>th</sup> day of October, 2009.

**BOARD OF COUNTY COMMISSIONERS OF  
ST. JOHNS COUNTY, FLORIDA**



**ATTEST Cheryl Strickland  
Clerk of Courts**

**BY:**

Pam Helterman  
Deputy Clerk

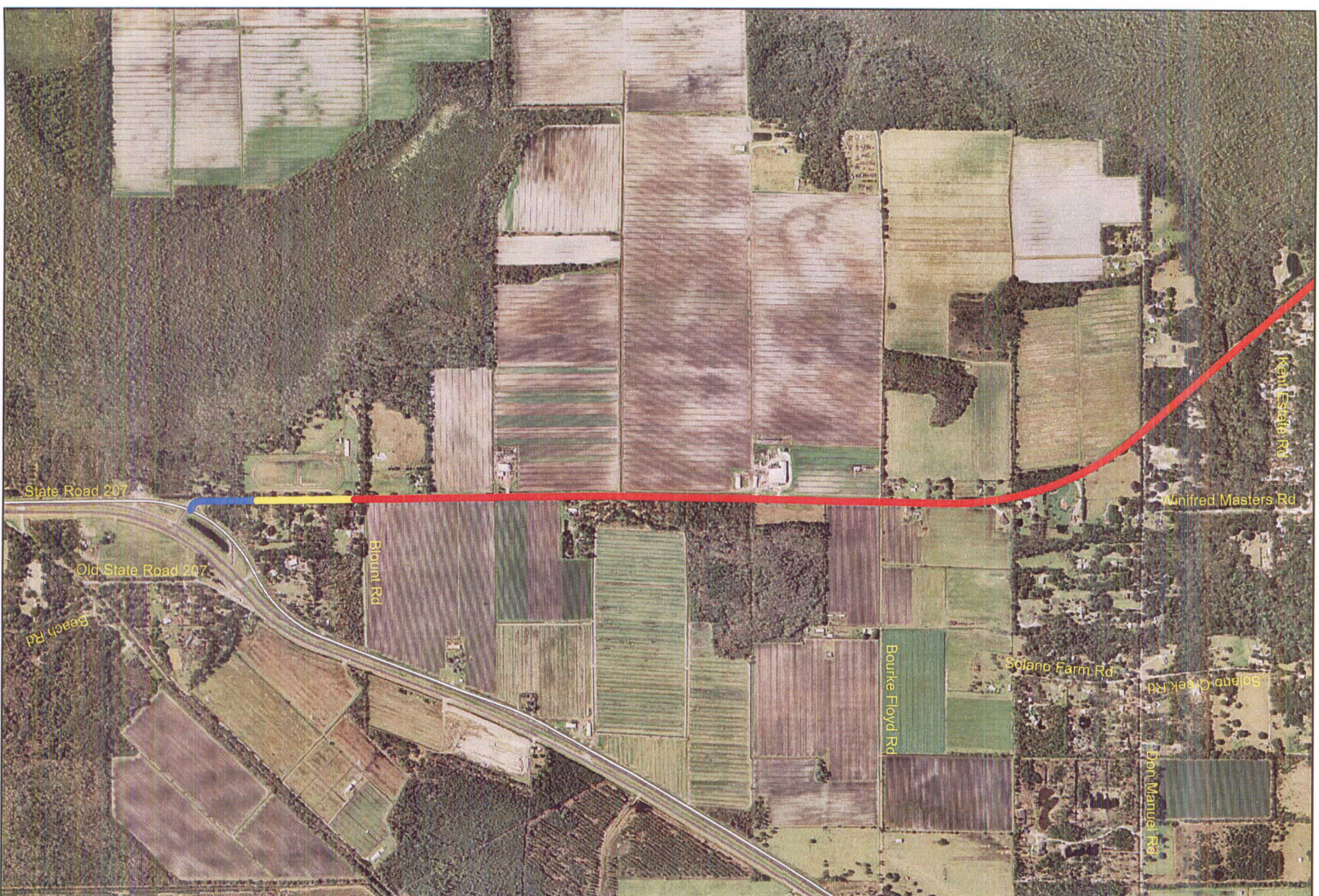
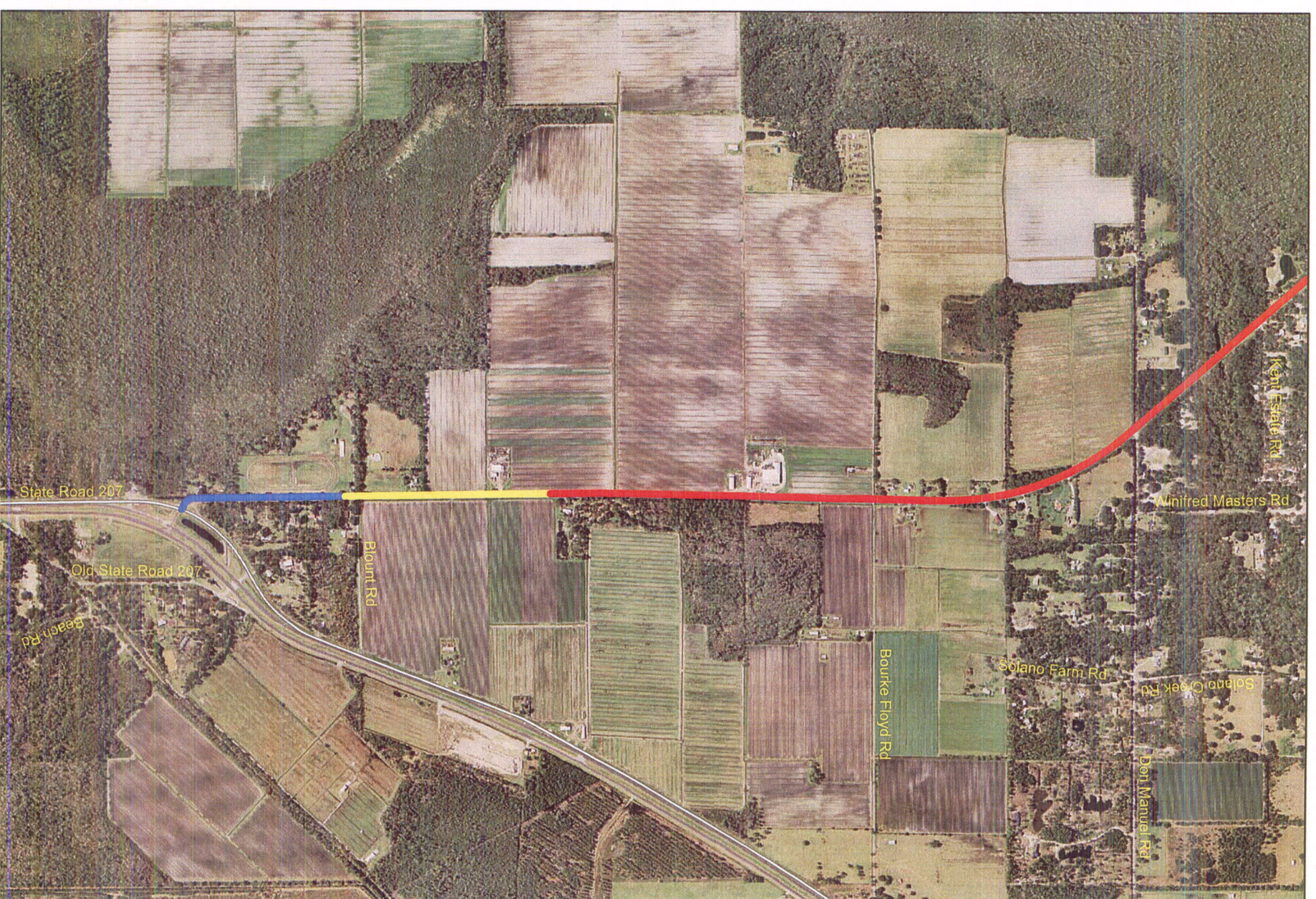
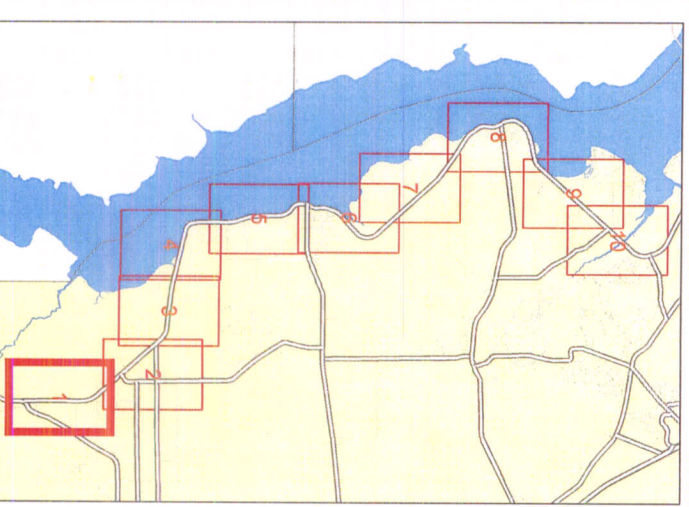
Cyndi Stevenson  
/Cyndi Stevenson ---Chair

RENDITION DATE 10/8/09

# Speed Limit Zones on CR-13



Legend	
Speed Limits	
	35
	40
	45
	50
	55



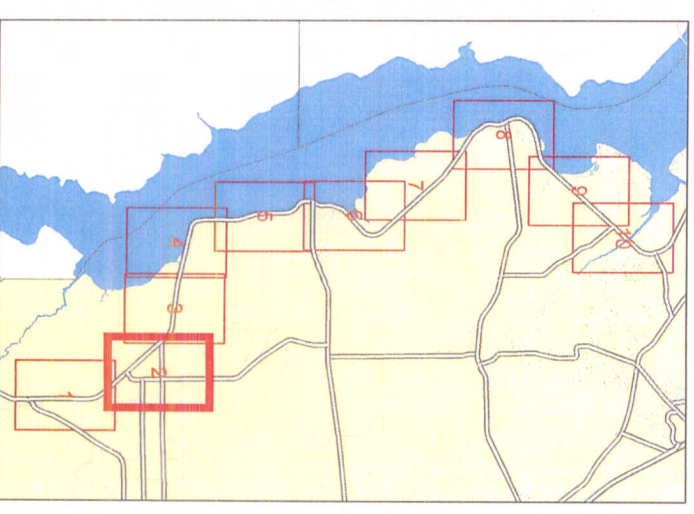
**EXISTING**

**PROPOSED**

# Speed Limit Zones on CR-13



Legend	
Speed Limits	
	35
	40
	45
	50
	55



**EXISTING**

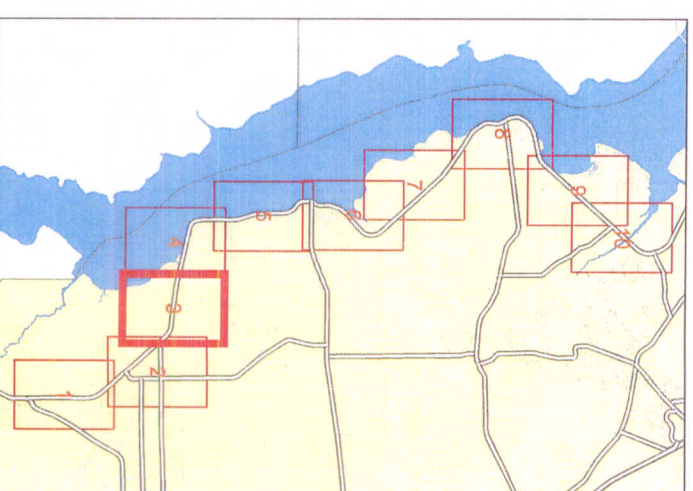


**PROPOSED**

# Speed Limit Zones on CR-13



Legend	
Speed Limits	
	35
	40
	45
	50
	55

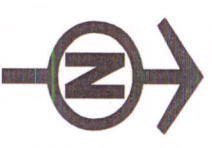


**EXISTING**

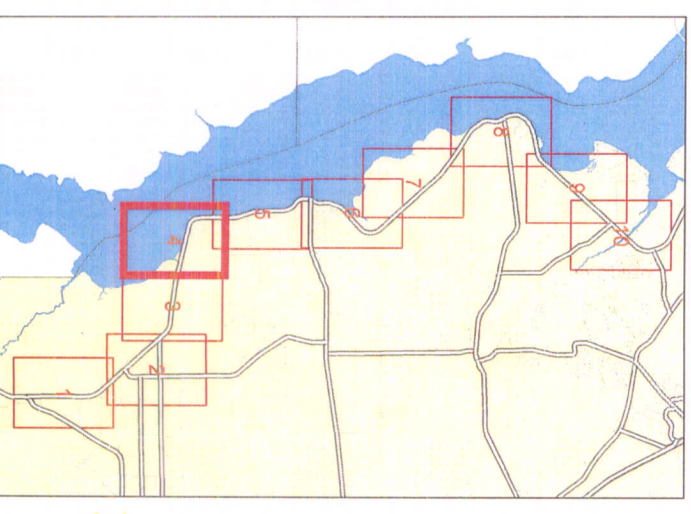


**PROPOSED**

# Speed Limit Zones on CR-13



Legend	
Speed Limits	
	35
	40
	45
	50
	55



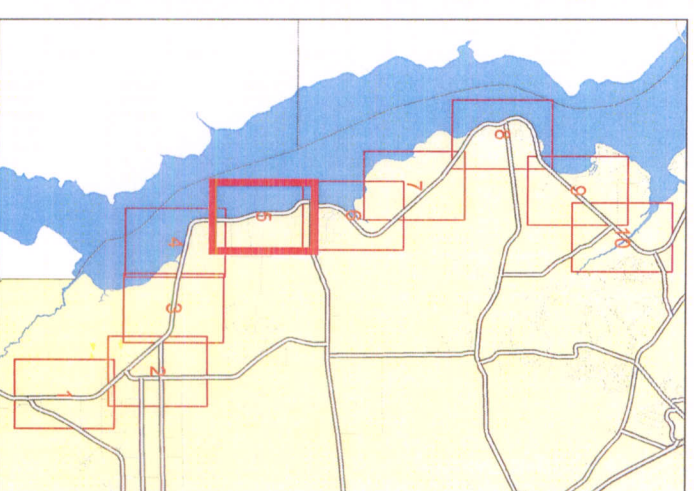
**EXISTING**

**PROPOSED**

# Speed Limit Zones on CR-13



Legend	
Speed Limits	
	35
	40
	45
	50
	55



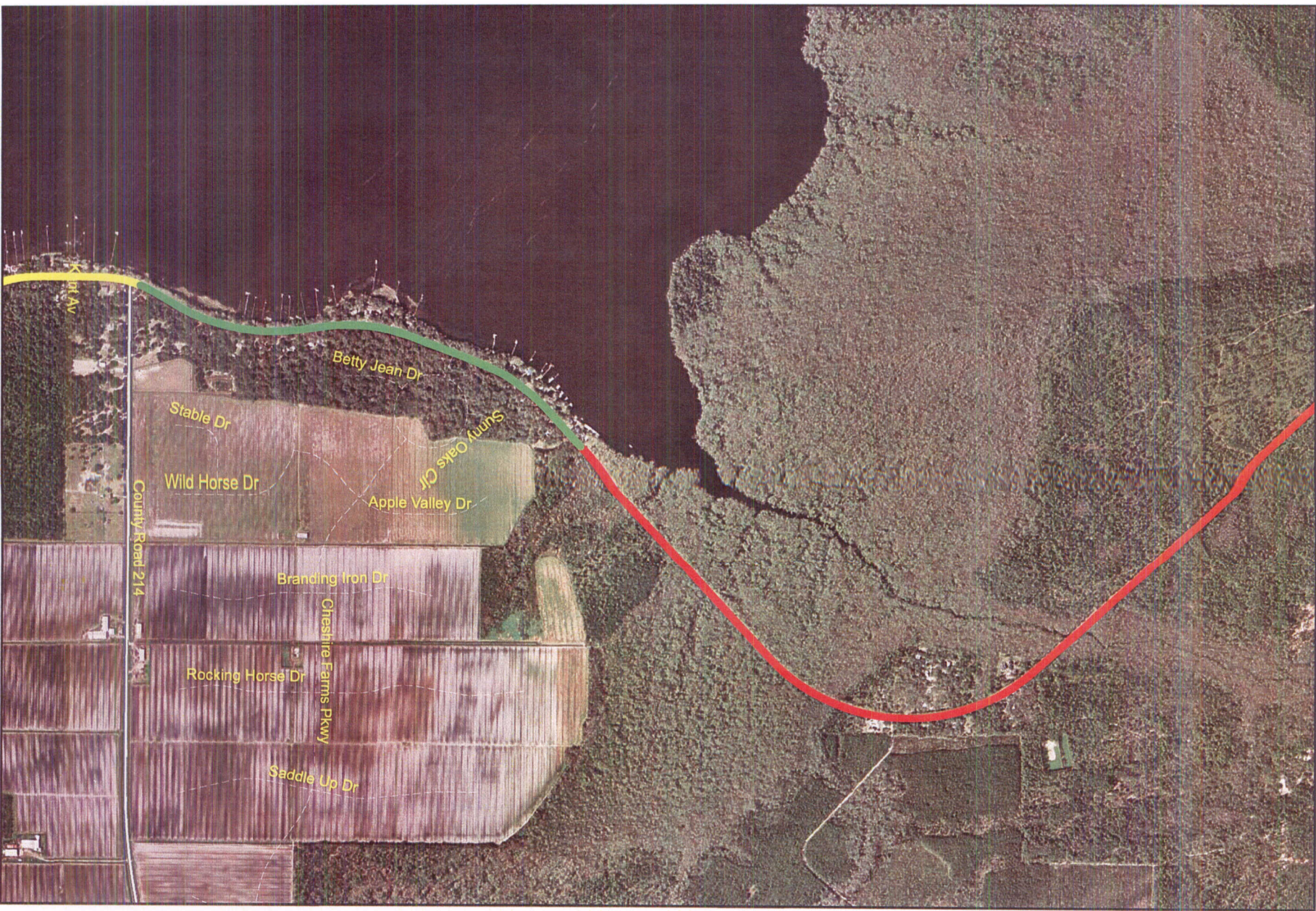
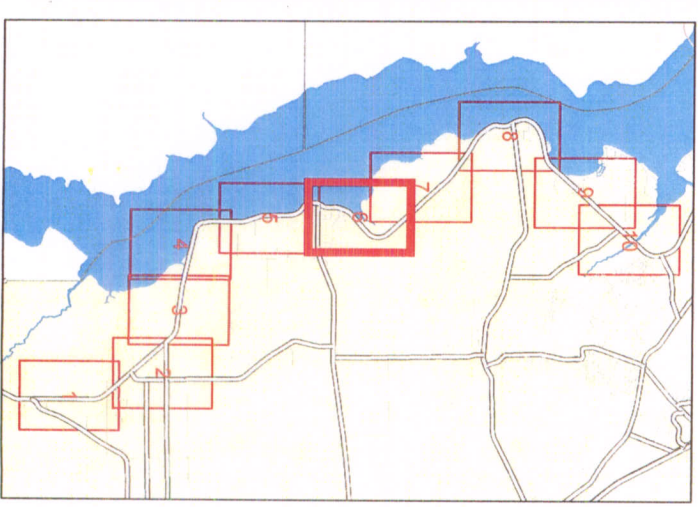
**EXISTING**

**PROPOSED**

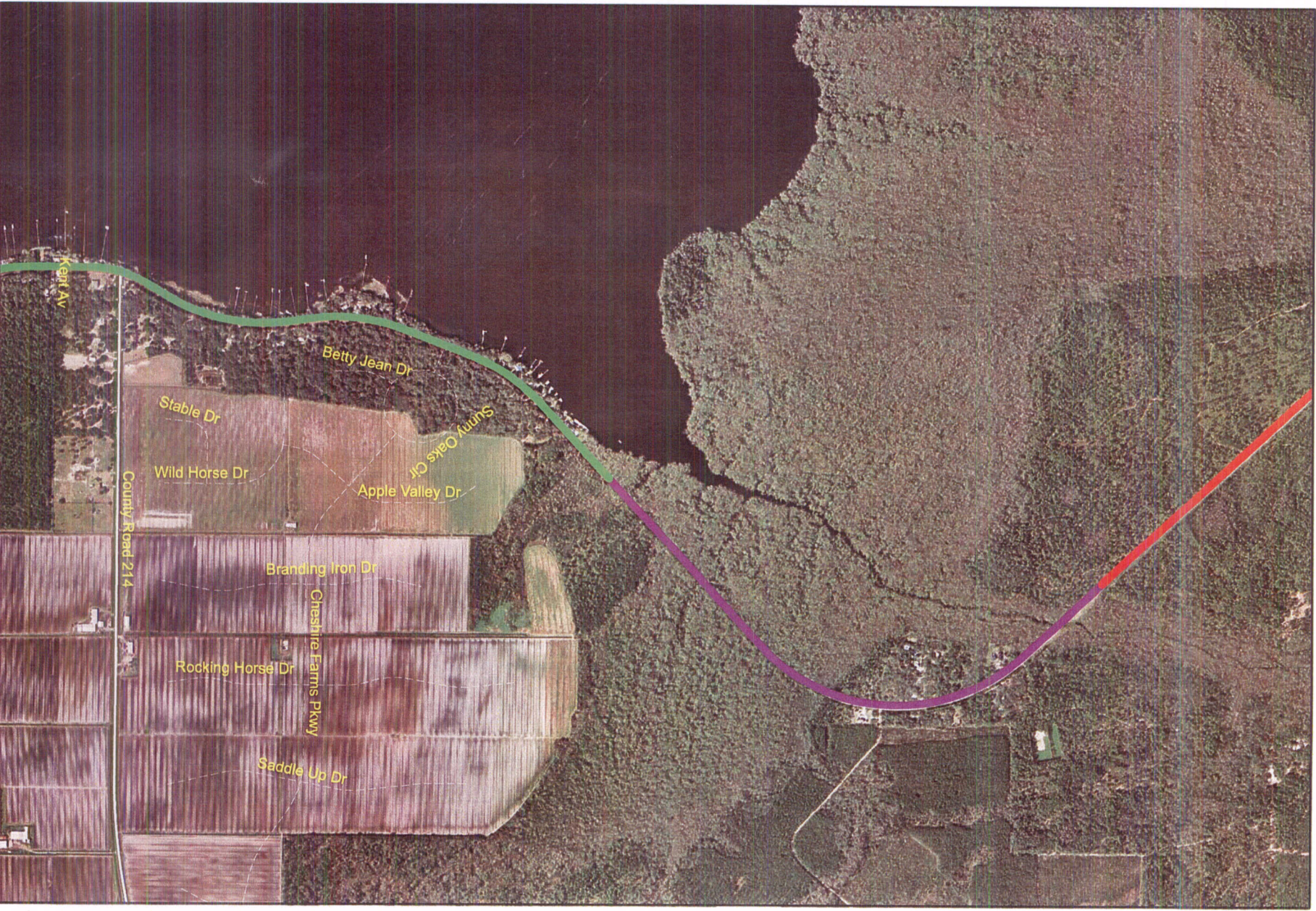
# Speed Limit Zones on CR-13



Legend	
Speed Limits	
	35
	40
	45
	50
	55



**EXISTING**



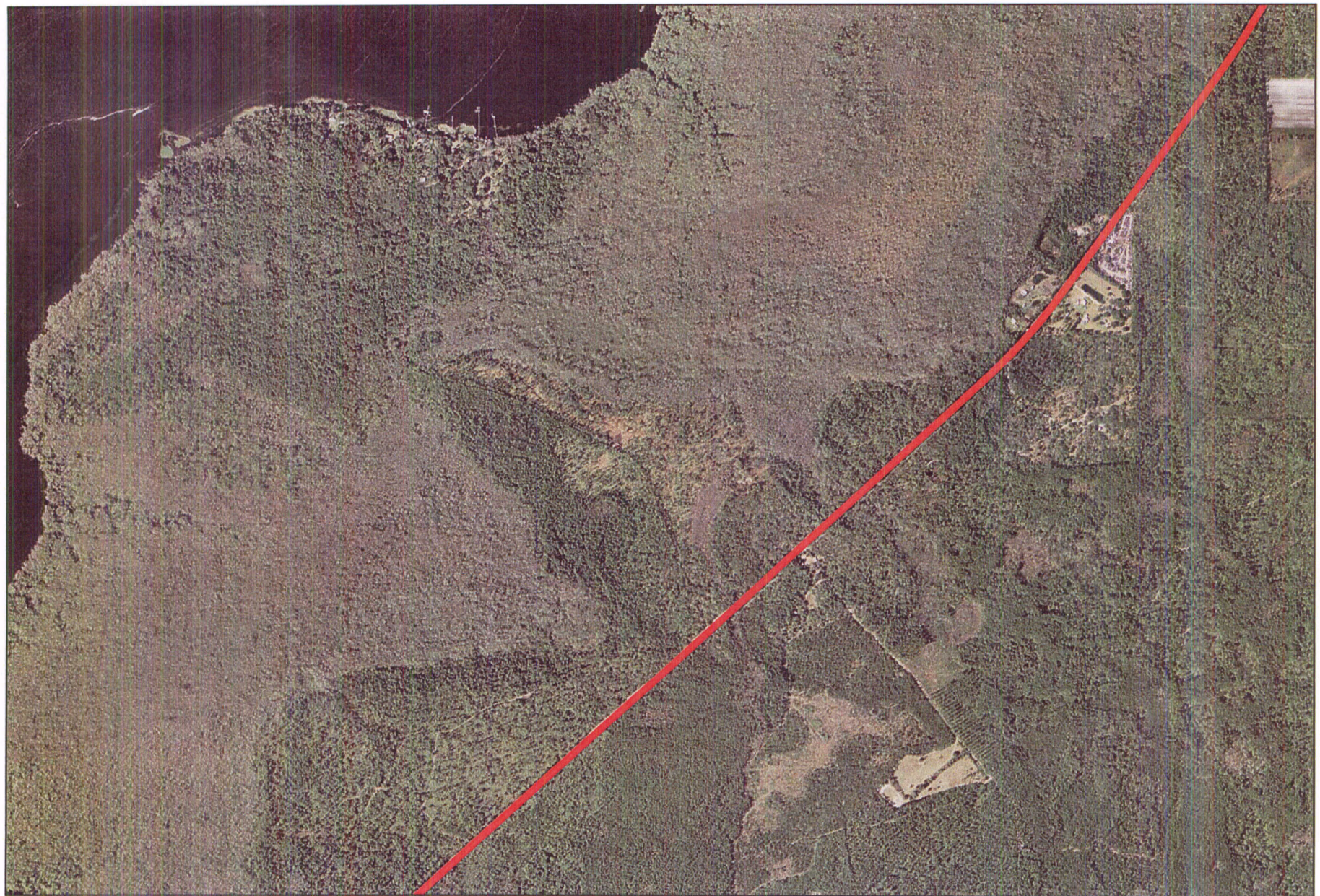
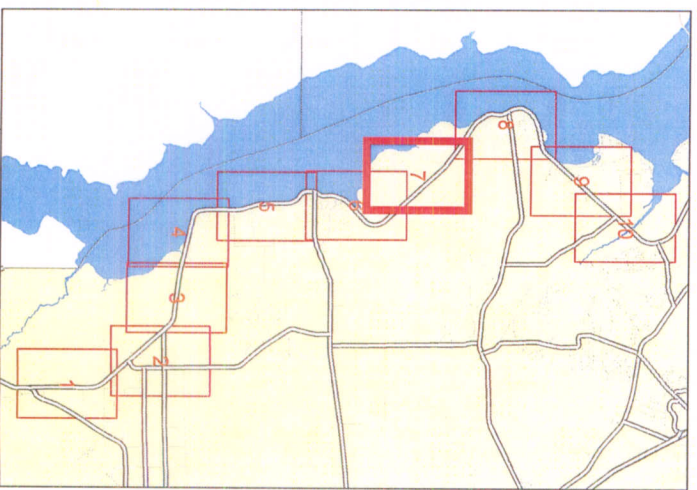
**PROPOSED**



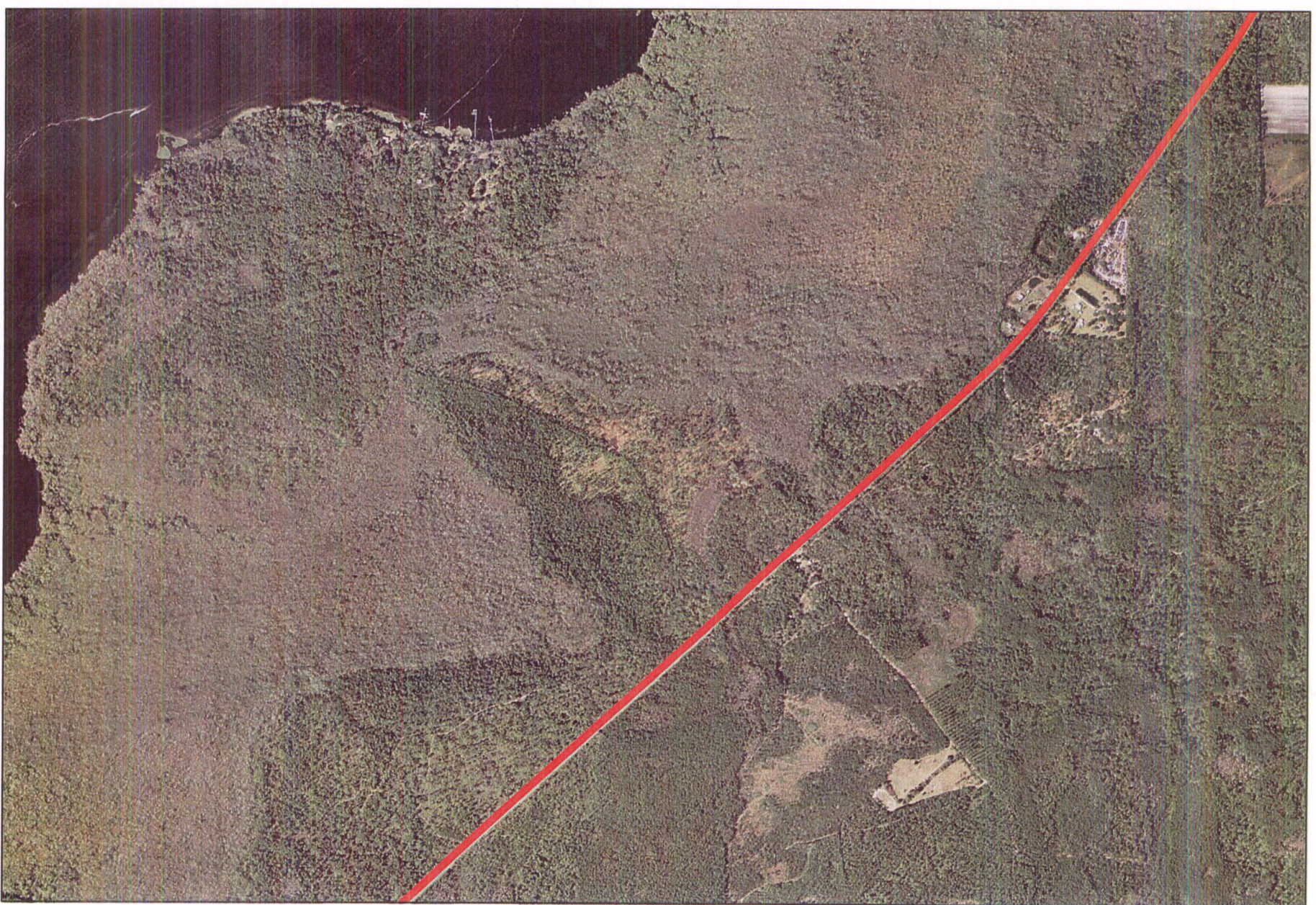
# Speed Limit Zones on CR-13



Legend	
Speed Limits	
	35
	40
	45
	50
	55



**EXISTING**

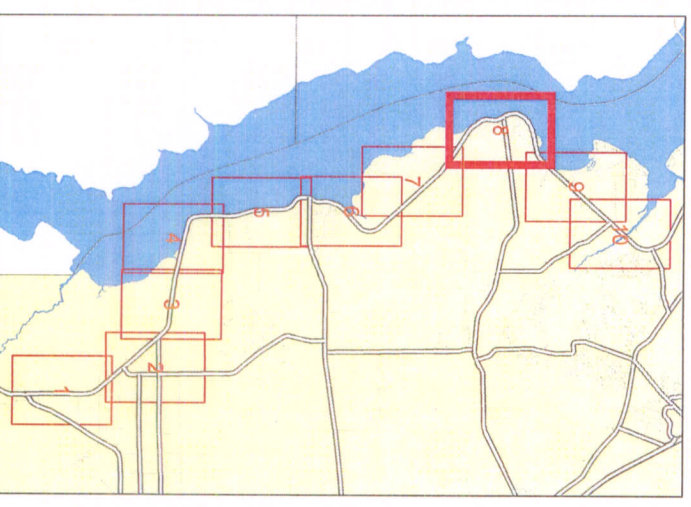


**PROPOSED**

# Speed Limit Zones on CR-13



Legend	
Speed Limits	
	35
	40
	45
	50
	55



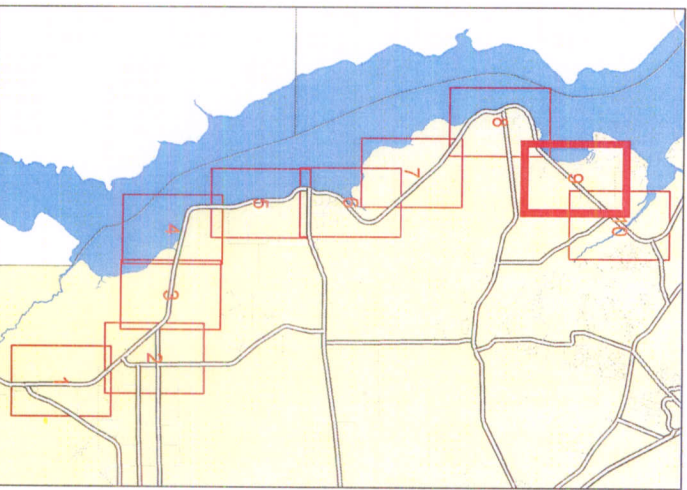
**EXISTING**

**PROPOSED**

# Speed Limit Zones on CR-13



Legend	
Speed Limits	
	35
	40
	45
	50
	55



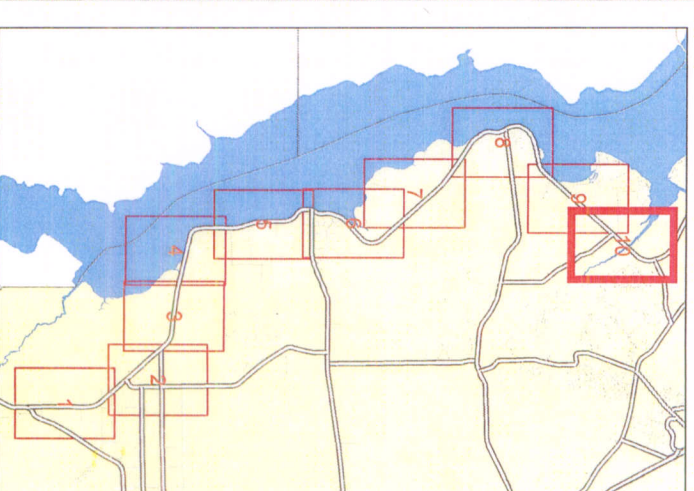
**EXISTING**

**PROPOSED**

# Speed Limit Zones on CR-13



Legend	
Speed Limits	
	35
	40
	45
	50
	55

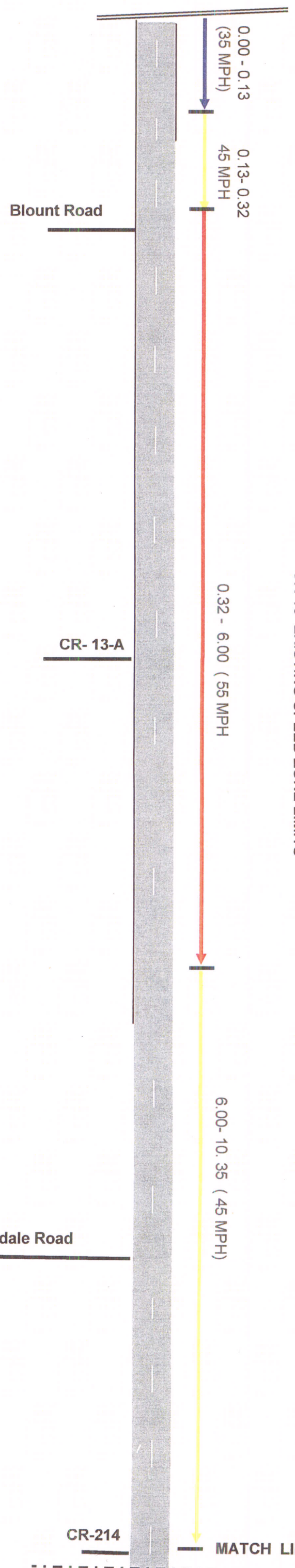


**PROPOSED**



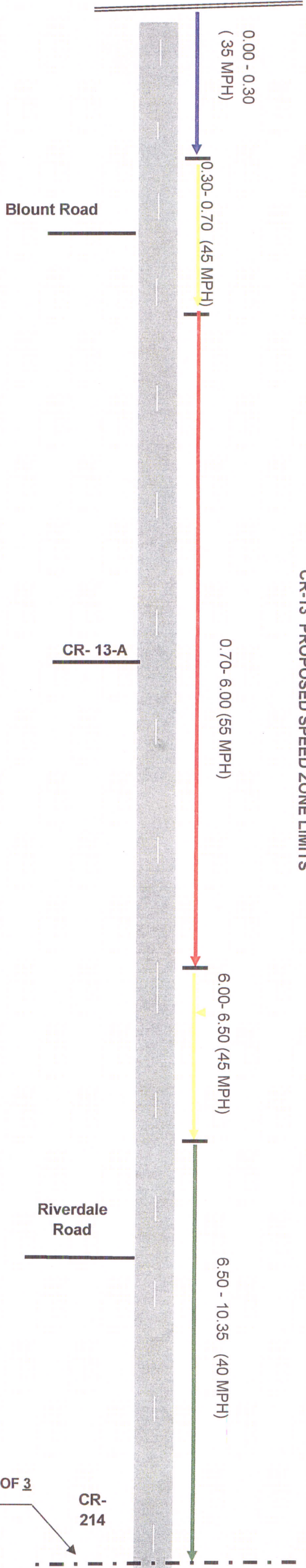
**EXISTING**

State Road 207



CR-13 EXISTING SPEED ZONE LIMITS

State Road 207



CR-13 PROPOSED SPEED ZONE LIMITS

NTS  
→ N

Engineering Division / Traffic Operations 08-31-09  
Note: Speed zone lengths are in miles. Distances are approximate and subject to final field adjustments.

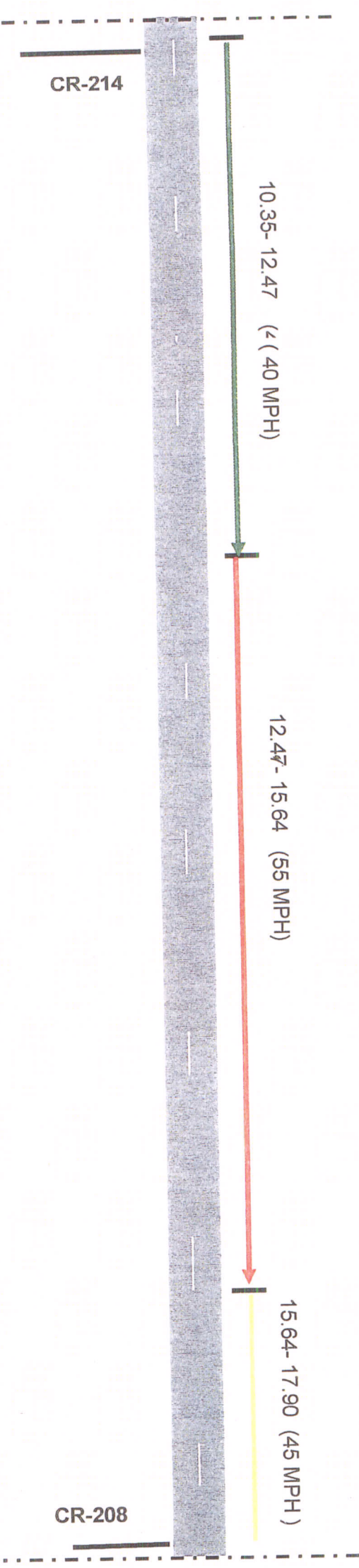
MATCH LINE SHT. 2 OF 3

CR-214

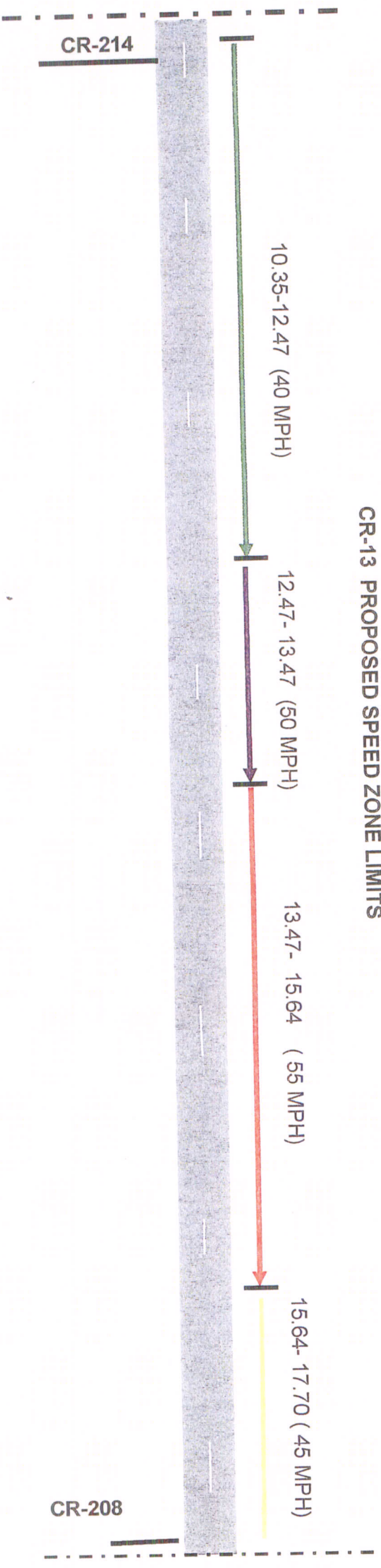
CR-214

MATCH LINE SHT.

MATCH LINE SHT. 1 OF 3



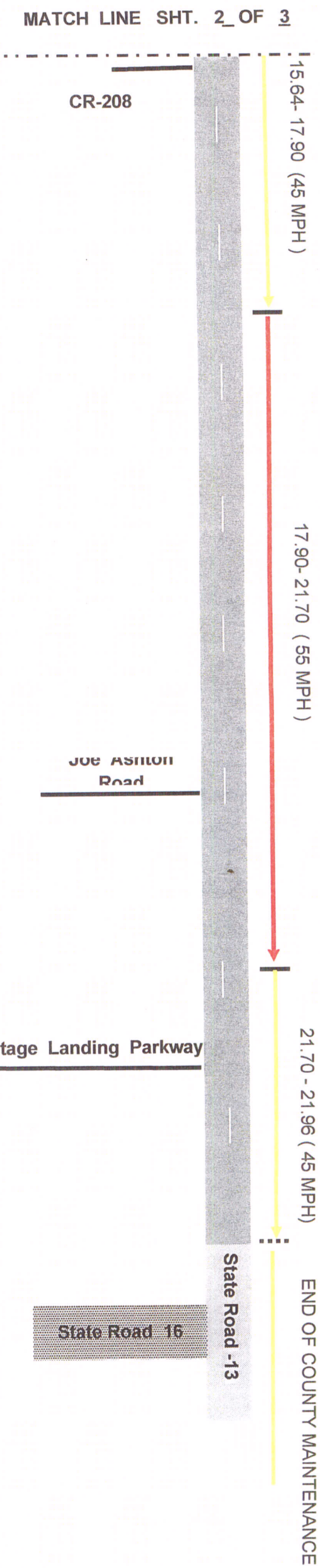
MATCH LINE SHT. 1 OF 3



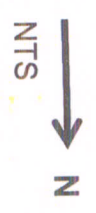
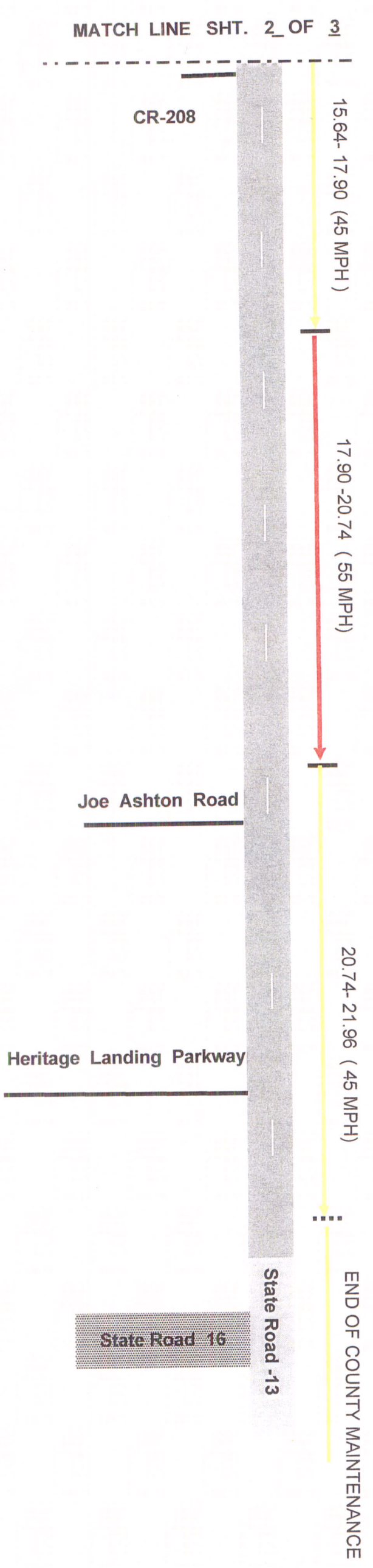
NTS  
→ N

Engineering/ Traffic Operations  
Note: Speed zone lengths are in miles. Distances are approximate and subject to final field adjustments.

CR-13 EXISTING SPEED ZONE LIMITS



CR-13 PROPOSED SPEED ZONE LIMITS



Engineering/ Traffic Operations  
8/31/2009  
Note: Speed zone lengths are in miles. Distances are approximate and subject to final field adjustments.