

RESOLUTION NO. 2009- 337

**A RESOLUTION BY THE BOARD OF COUNTY COMMISSIONERS OF ST. JOHNS COUNTY, FLORIDA, AUTHORIZING A TRANSFER OF \$111,000 FROM ST. JOHNS COUNTY UTILITY DEPARTMENT TO ST. JOHNS COUNTY PARKS & RECREATION DEPARTMENT, AS UNANTICIPATED REVENUE, FOR THE USE OF A PORTION OF COUNTY PROPERTY KNOWN AS "TURNBULL" LOCATED OFF STATE ROAD 16 THAT IS DESIGNATED FOR PARKS AND RECREATION.**

**WHEREAS**, St. Johns County Utility Department ("Utilities") has requested use of approximately four and one half acres of a County property known as "Turnbull", located off State Road 16, as shown on the map attached hereto as Exhibit "A", incorporated by reference and made a part hereof, and

**WHEREAS**, Utilities plans to construct a reclaimed water booster station and will have long term continued use of the four and one half acre portion of the forty five acre +/- parcel that is designated for Parks and Recreation; and

**WHEREAS**, construction of the reclaimed water booster station and its continued operation and maintenance by Utilities will not conflict with the future use of the remainder of Turnbull property for Parks and Recreation purposes; and

**WHEREAS**, Utilities and Parks and Recreation Departments have agreed on this location and to the value assigned by St. Johns County Real Estate Division, as stated in a Memo attached hereto as Exhibit "B", incorporated by reference and made a part hereof; and

**WHEREAS**, Utilities has agreed to pay Parks and Recreation Department \$111,000 for the property and the unanticipated revenue will be placed in the Turnbull Park account for use on the construction of the future park; and

**WHEREAS**, it is in the best interest of the County to allow this use by Utilities, in order to comply with Consent Order 08-2264 issued by the Florida Department of Environmental Protection; and

**WHEREAS**, to the extent that there are typographical, or administrative errors that do not change the tone, tenor, or concept of this Resolution, then this Resolution may be revised without subsequent approval by the Board of County Commissioners.

**NOW, THEREFORE BE IT RESOLVED BY THE BOARD OF COUNTY COMMISSIONERS OF ST. JOHNS COUNTY**, as follows:

Section 1. The above recitals are incorporated by reference into the body of this Resolution and such recitals are adopted as findings of fact.

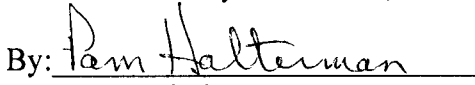
Section 2. The transfer of \$111,000 from Utilities to be accepted by Parks and Recreation Department as unanticipated revenue is hereby approved by the Board of County Commissioners.

PASSED AND ADOPTED this 17<sup>th</sup> day of November, 2009.

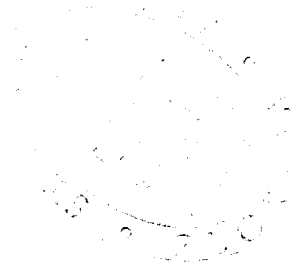
**BOARD OF COUNTY COMMISSIONERS  
OF ST. JOHNS COUNTY, FLORIDA.**

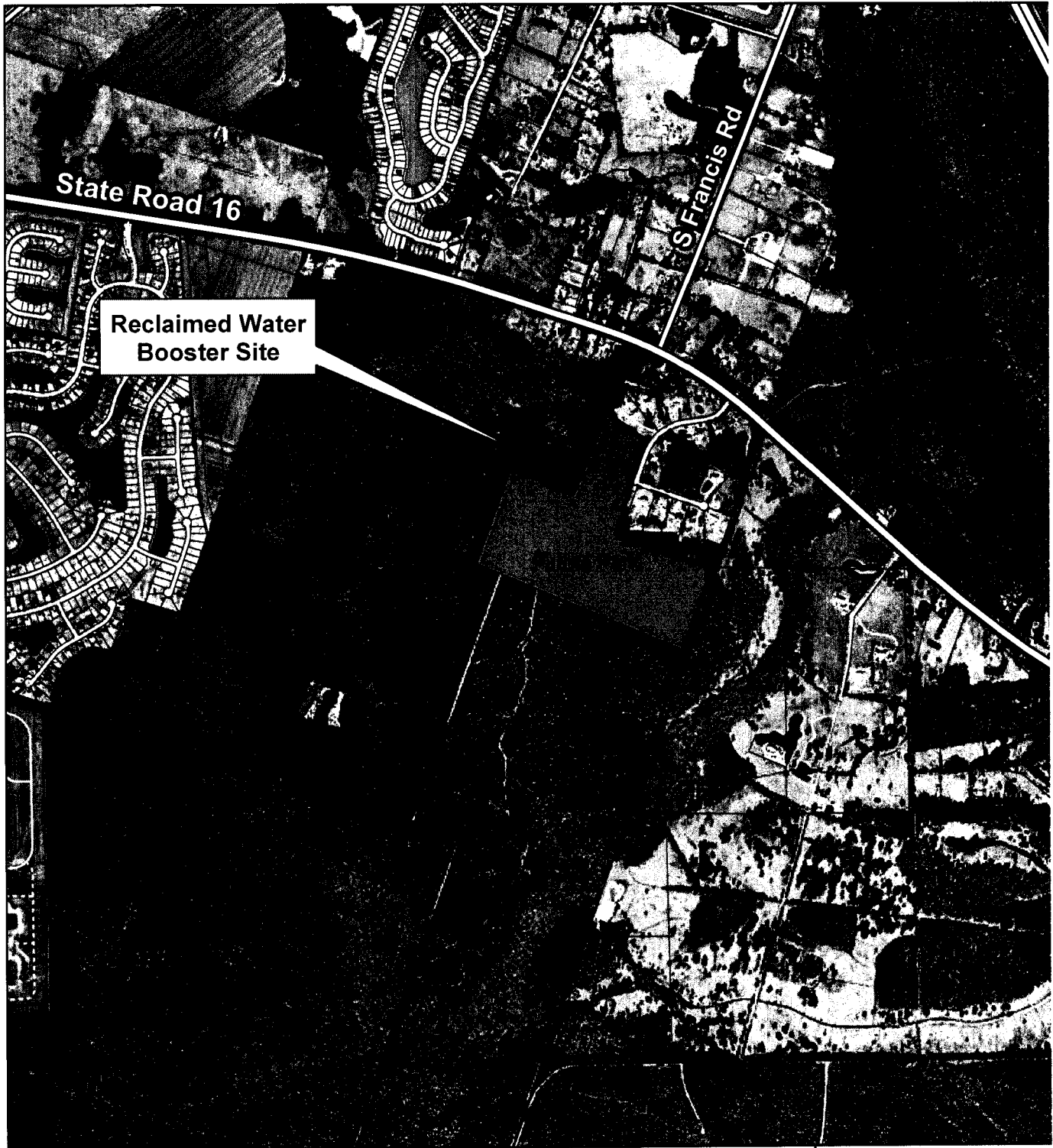
By:   
Ron Sanchez, Chair

ATTEST: Cheryl Strickland, Clerk

By:   
Deputy Clerk

RENDITION DATE 11/19/09

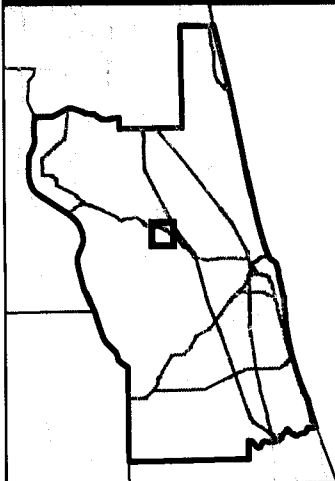




Reclaimed Water  
Booster Site

State Road 16

S Francis Rd



## Exhibit "A" to Resolution

0 700 1,400 2,800 4,200 5,600 Feet

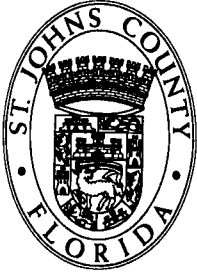


St. Johns County  
Land Mgmt Systems  
Real Estate Division



Map Prepared:  
October 7, 2009  
(904) 209-0788

**DISCLAIMER.**  
This map is for reference use  
only. Data provided are derived  
from multiple sources with  
varying levels of accuracy.



**ST. JOHNS COUNTY**  
**LAND MANAGEMENT SYSTEMS**  
**REAL ESTATE DIVISION**  
500 San Sebastian View  
St. Augustine, Florida 32084

---

**I N T E R O F F I C E   M E M O R A N D U M**

---

**TO:** Board of County Commissioners

**THROUGH:** Mary Ann Blount, Land Management Systems Director  
Neal Shinkre, Utility Engineering Director  
Wil Smith, Assistant Recreation Director

**FROM:** Nanette Bradbury, Real Estate Appraisal Coordinator

**SUBJECT:** Turnbull Parcel located at 4625 SR 16

**DATE:** October 15, 2009

The County owns a parcel that was acquired in 2003 to be utilized as a park/mitigation site. The park site is approximately forty-five (45) acres. The Utility Division has requested use of a four and one half acre portion of the park site for construction of a reclaimed water booster station. The current plan is to clear a 100' x 100' portion for the reclaimed water booster station and possibly in the future install a reclaimed water tank.

The proposed 4 ½ acre Utility site, which has some wetlands, has an estimated land value of \$111,000.00. This value was determined by using comparable land sales in the area.