

RESOLUTION NO. 2010- 231

A RESOLUTION BY THE BOARD OF COUNTY COMMISSIONERS OF ST. JOHNS COUNTY, FLORIDA, APPROVING THE TERMS AND AUTHORIZING THE CHAIRMAN TO EXECUTE A CONSERVATION EASEMENT OVER APPROXIMATELY 9.5 ACRES AT TERRA PINES ON CR 208 TO MITIGATE FOR WETLAND IMPACTS ASSOCIATED WITH THE DUVAL/ST. JOHNS STREET IMPROVEMENTS.

RECITALS

WHEREAS, the recent improvements associated with Duval/St. Johns Street resulted in wetland impacts; and

WHEREAS, the St. Johns River Water Management District required a conservation easement as a condition of permit # 40-109-28688-4 to offset said impacts; and

WHEREAS, the attached Conservation Easement, Exhibit "A", preserves approximately 9.5 acres of wetlands at the County-owned mitigation site Terra Pines, located on CR 208.

NOW THEREFORE, BE IT RESOLVED by the Board of County Commissioners of St. Johns County, Florida, as follows:

Section 1. The above Recitals are incorporated by reference into the body of this Resolution and such Recitals are adopted as findings of fact.

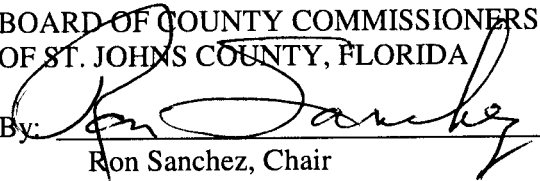
Section 2. The Chairman is authorized to execute the Conservation Easement for the aforementioned 9.5 acres off CR 208 to mitigate wetland impacts associated with the improvements of Duval/St. Johns Streets.

Section 3. The Clerk is instructed to record the Conservation Easement in the public records of St. Johns County and mail the original Conservation Easement to the St. Johns River Water Management District and a certified copy of this Resolution shall be forwarded forthwith to St. Johns River Water Management District, Office of General Counsel, 4049 Reid Street, Palatka, FL 32178.

PASSED AND ADOPTED by the Board of County Commissioners of St. Johns County, Florida, this 19th day of October 2010.

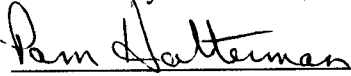
BOARD OF COUNTY COMMISSIONERS
OF ST. JOHNS COUNTY, FLORIDA

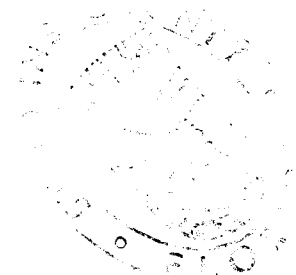
By:


Ron Sanchez, Chair

ATTEST: Cheryl Strickland, Clerk

By:


Deputy Clerk



Prepared by:
Michael D. Hunt
Deputy County Attorney
4020 Lewis Speedway
St. Augustine, FL 32084

Return recorded original to:
Office of General Counsel
St. Johns River Water Management District
4049 Reid Street
Palatka, FL. 32177

CONSERVATION EASEMENT

THIS CONSERVATION EASEMENT is made this ____ day of _____, 2010, by **ST. JOHNS COUNTY**, a political subdivision of the State of Florida, having an address at 4020 Lewis Speedway, St. Augustine, Florida 32095 (“Grantor”) in favor of the **ST. JOHNS RIVER WATER MANAGEMENT DISTRICT**, a public body existing under Chapter 373, Florida Statutes, having a mailing address at 4049 Reid Street, Palatka, Florida 32177 (“Grantee”).

WITNESSETH:

WHEREAS, Grantor solely owns, in fee simple, certain real property in St. Johns County, Florida, more particularly described in Exhibit “A” attached hereto and incorporated by this reference, (“the Property”);

WHEREAS, Grantor grants this conservation easement as a condition of permit # 40-109-28688-4, issued by Grantee to off-set direct impacts to natural resources, fish and wildlife, and wetland functions; and

WHEREAS, Grantor desires to preserve the Property in its natural condition in perpetuity;

NOW THEREFORE, in consideration of the above and the mutual covenants, terms, conditions and restrictions contained herein, and pursuant to the provisions of Section 704.06, Florida Statutes, Grantor hereby voluntarily grants and conveys to Grantee a conservation easement in perpetuity over the Property of the nature and character and to the extent hereinafter set forth (the “Conservation Easement”). Grantor fully warrants title to said Property, and will warrant and defend the same against the lawful claims of all persons whomsoever.

1. Purpose: The purpose of this Conservation Easement is to assure that the Property will be retained forever in its existing natural condition and to prevent any use of the Property that will impair or interfere with the environmental value of the Property.

2. Prohibited Uses: Any activity on or use of the Property inconsistent with the purpose of this Conservation Easement is prohibited. Without limiting the generality of the foregoing, the following activities and uses are expressly prohibited:

- a) Construction or placing buildings, roads, signs, billboards or other advertising, utilities or other structures on or above the ground.
- b) Dumping or placing soil or other substance or material as landfill or dumping or placing trash, waste or unsightly or offensive materials.
- c) Removing or destroying trees, shrubs, or other vegetation.
- d) Excavating, dredging or removing loam, peat, gravel, soil, rock or other material substances in such a manner as to affect the surface.
- e) Surface use, except for purposes that permit the land or water area to remain predominantly in its natural condition.
- f) Activities detrimental to drainage, flood control, water conservation, erosion control, soil conservation, or fish and wildlife habitat preservation.
- g) Acts or uses detrimental to such retention of land or water areas.
- h) Acts or uses detrimental to the preservation of the structural integrity or physical appearance of sites or properties of historical, architectural, archaeological, or cultural significance.

3. Reserved Rights: Grantor reserves unto itself, and its successors and assigns all rights accruing from its ownership of the Property, including the right to engage in or permit or invite others to engage in all uses of the Property, that are not expressly prohibited herein and are not inconsistent with the purpose of this Conservation Easement.

4. Rights of Grantee: To accomplish the purposes stated herein, Grantor conveys the following rights to Grantee:

- a) To enter upon and inspect the Property in a reasonable manner and at reasonable times to determine if Grantor or its successors and assigns are complying with the covenants and prohibitions contained in this Conservation Easement.
- b) To proceed at law or in equity to enforce the provisions of this Conservation Easement and the covenants set forth herein, to prevent the occurrence of any of the prohibited activities set forth herein, and require the restoration of areas or features of the Property that may be damaged by any activity inconsistent with this Conservation Easement.

5. Grantee's Discretion: Grantee may enforce the terms of this Conservation Easement at its discretion, but if Grantor breaches any term of this Conservation Easement and Grantee does not exercise its rights under this Conservation Easement, Grantee's forbearance shall not be construed to be a waiver by Grantee of such term, or of any subsequent breach of the same, or any other term of this Conservation Easement, or of any of the Grantee's rights under this Conservation Easement. No delay or omission by Grantee in the exercise of any right or remedy upon any breach by Grantor shall impair such right or remedy or be construed as a waiver. Grantee shall not be obligated to Grantor, or to any other person or entity, to enforce the provisions of this Conservation Easement.

6. Grantee's Liability: Grantor will assume all liability for any injury or damage to the person or property of third parties which may occur on the Property arising from

Grantor's ownership of the Property. Neither Grantors, nor any person or entity claiming by or through Grantors, shall hold Grantee liable for any damage or injury to person or personal property, which may occur on the Property.

7. Acts Beyond Grantor's Control: Nothing contained in this Conservation Easement shall be construed to entitle Grantee to bring any action against Grantor for any injury to or change in the Property resulting from natural causes beyond Grantor's control, including, without limitation, fire, flood, storm and earth movement, or from any necessary action taken by Grantor under emergency conditions to prevent, abate or mitigate significant injury to the Property or to persons resulting from such causes.

8. Recordation: Grantor shall record this Conservation Easement in timely fashion in the Official Records of St. Johns County, Florida, and shall record it at any time Grantee may require to preserve its rights. Grantor shall pay all recording costs and taxes necessary to record this Conservation Easement in the public records. Grantor will hold Grantee harmless from any recording costs or taxes necessary to record this Conservation Easement in the public records.

9. Successors: The covenants, terms, conditions and restrictions of this Conservation Easement shall be binding upon, and inure to the benefit of the parties hereto and their respective personal representatives, heirs, successors, and assigns and shall continue as a servitude running in perpetuity with the Property.

IN WITNESS WHEREOF, Grantor has executed this Conservation Easement on the day and year first above written.

ST. JOHNS COUNTY, a political subdivision of the State of Florida, by its Board of County Commissioners

By: _____
Ron Sanchez
Chair

ATTEST: Cheryl Strickland, Clerk

By: _____
Deputy Clerk

Print Name

AMENDED JULY 16, 2010
DESCRIPTION CONSERVATION PARCEL 4

A TRACT OF LAND LYING WITHIN A PART OF SECTION 7 , TOWNSHIP 7 SOUTH, RANGE 29 EAST AND A PART OF SECTION 12 , TOWNSHIP 7 SOUTH, RANGE 28 EAST, ST. JOHNS COUNTY, FLORIDA AND BEING MORE PARTICULARLY DESCRIBED AS FOLLOWS:

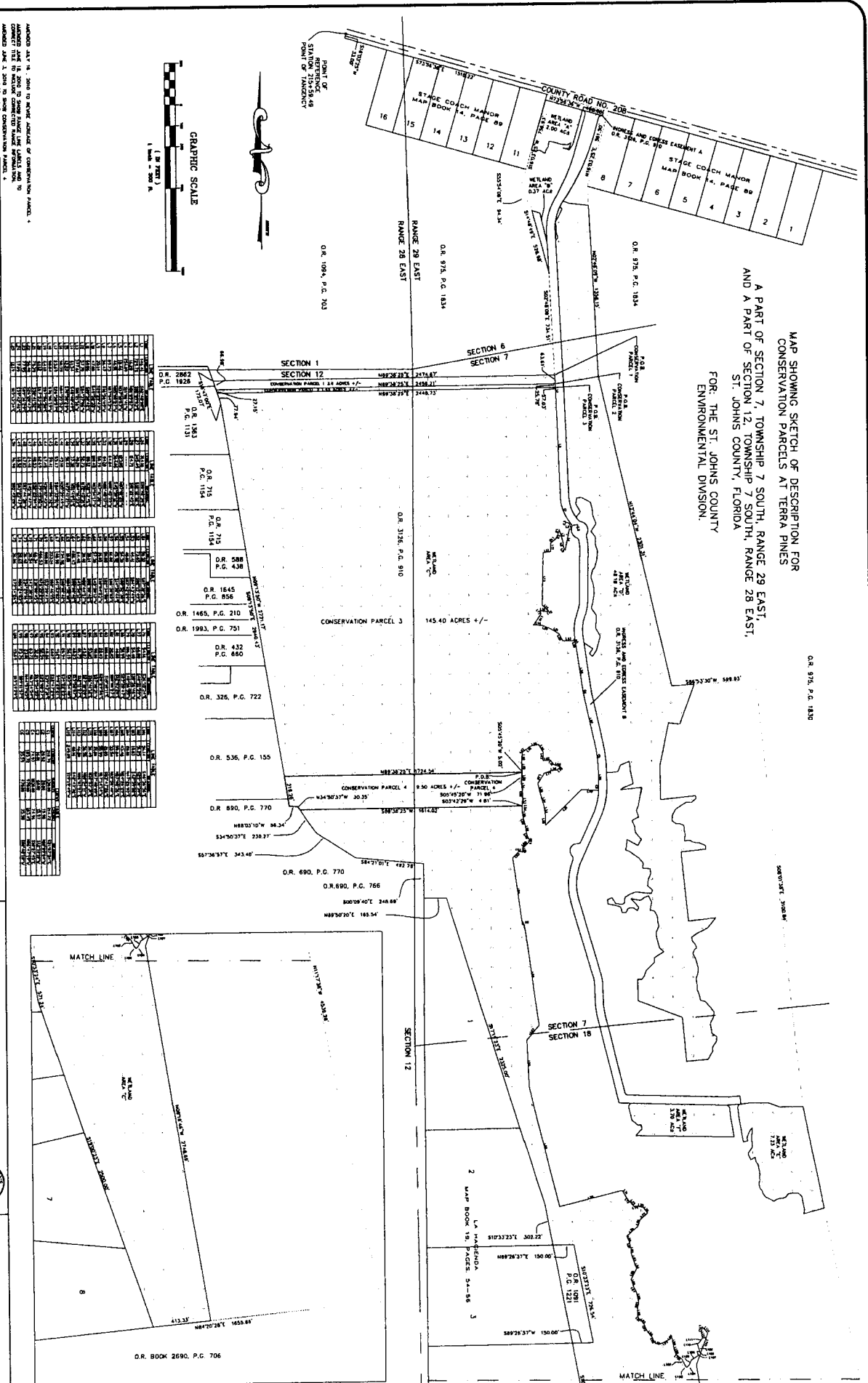
FOR A POINT OF REFERENCE, COMMENCE AT THE POINT OF TANGENCY, STATION 215+59.49, ACCORDING TO STATE OF FLORIDA, STATE ROAD DEPARTMENT, RIGHT-OF-WAY MAP FOR STATE ROAD NO. 208, SECTION NO. 7859-150, ON SHEET 4, DATED 11/15/55 AND LAST REVISED 05/04/56, ST. JOHNS COUNTY, FLORIDA, SAID POINT BEING ON THE CENTERLINE AND HAVING A 66 FOOT RIGHT-OF-WAY), ACCORDING TO SAID RIGHT-OF-WAY MAP; THENCE SOUTH 16°03'25" WEST, LEAVING SAID CENTERLINE, FOR 33.00 FEET TO THE SOUTH RIGHT-OF-WAY LINE OF SAID STATE ROAD NO. 208; THENCE SOUTH 73°56'35" EAST, ALONG SAID SOUTH RIGHT-OF-WAY LINE, FOR 1518.22 FEET; THENCE SOUTH 16°03'25" WEST A DISTANCE OF 756.93 FEET; THENCE SOUTH 55°54'06" EAST A DISTANCE OF 94.34 FEET; THENCE SOUTH 14°48'49" EAST A DISTANCE OF 528.98 FEET; THENCE SOUTH 02°48'09" EAST A DISTANCE OF 734.51 FEET; THENCE SOUTH 02°48'08" EAST A DISTANCE OF 89.39 FEET; THENCE RUN SOUTHERLY, ALONG THE EASTERLY LINE OF THOSE LANDS KNOWN AS WETLAND AREA "C" AS DESCRIBED IN OFFICIAL RECORDS 3126 PAGE 910 OF THE PUBLIC RECORDS OF SAID COUNTY, THE FOLLOWING 55 COURSES; THENCE SOUTH 02°48'08" EAST A DISTANCE OF 57.03 FEET; THENCE SOUTH 02°09'03" EAST A DISTANCE OF 729.78 FEET TO A POINT OF CURVATURE OF A CURVE CONCAVE EASTERLY, HAVING A RADIUS OF 330.00 FEET; THENCE ALONG AND WITH THE ARC OF SAID CURVE, A CHORD BEARING OF SOUTH 21°07'54" EAST AND A CHORD DISTANCE OF 214.72 FEET TO THE POINT OF CURVATURE OF A REVERSE CURVE CONCAVE WESTERLY HAVING A RADIUS OF 20.00 FEET; THENCE ALONG AND WITH THE ARC OF SAID CURVE, A CHORD BEARING OF SOUTH 10°09'04" EAST AND A CHORD DISTANCE OF 19.98 FEET TO THE POINT OF CURVATURE OF A REVERSE CURVE CONCAVE SOUTHEASTERLY HAVING A RADIUS OF 60.00 FEET; THENCE ALONG AND WITH THE ARC OF SAID CURVE, A CHORD BEARING OF SOUTH 12°10'10" WEST AND A CHORD DISTANCE OF 15.97 FEET TO A POINT ON A CURVE; THENCE NORTH 81°09'07" WEST A DISTANCE OF 16.28 FEET; THENCE SOUTH 11°06'41" WEST A DISTANCE OF 154.09 FEET; THENCE NORTH 37°10'03" WEST A DISTANCE OF 18.46 FEET; THENCE NORTH 05°08'27" WEST A DISTANCE OF 46.51 FEET; THENCE NORTH 17°04'13" WEST A DISTANCE OF 89.73 FEET; THENCE SOUTH 16°56'49" WEST A DISTANCE OF 36.47 FEET; THENCE SOUTH 28°25'43" WEST A DISTANCE OF 35.14 FEET; THENCE SOUTH 49°58'35" WEST A DISTANCE OF 47.00 FEET; THENCE SOUTH 00°50'42" EAST A DISTANCE OF 60.86 FEET; THENCE SOUTH 84°37'06" WEST A DISTANCE OF 57.70 FEET; THENCE SOUTH 01°21'16" WEST A DISTANCE OF 377.61 FEET; THENCE SOUTH 48°40'49" EAST A DISTANCE OF 61.34 FEET; THENCE SOUTH 70°58'29" WEST A DISTANCE OF 12.22 FEET; THENCE NORTH 84°35'53" WEST A DISTANCE OF 52.55 FEET; THENCE SOUTH 26°38'57" EAST A DISTANCE OF 23.69 FEET; THENCE SOUTH 36°06'19" WEST A DISTANCE OF 98.84 FEET; THENCE SOUTH 87°56'50" EAST A DISTANCE OF 64.18 FEET; THENCE SOUTH 67°53'52" EAST A DISTANCE OF 61.12 FEET; THENCE SOUTH 58°41'52" EAST A DISTANCE OF 79.39 FEET; THENCE SOUTH 26°20'47" EAST A DISTANCE OF 56.40 FEET; THENCE SOUTH 89°36'29" EAST A DISTANCE OF 77.95 FEET; THENCE SOUTH 39°42'46" EAST A DISTANCE OF 17.09 FEET; THENCE SOUTH 15°13'34" EAST A DISTANCE OF 12.19 FEET; THENCE SOUTH 08°02'38" EAST A DISTANCE OF 314.10 FEET TO A POINT OF CURVATURE OF A CURVE CONCAVE EASTERLY, HAVING A RADIUS OF 1030.00 FEET; THENCE ALONG AND WITH THE ARC OF SAID CURVE, A CHORD BEARING OF SOUTH 10°07'45" EAST AND A CHORD DISTANCE OF 74.96 FEET TO THE POINT OF TANGENCY OF SAID CURVE; THENCE SOUTH 12°12'52" EAST A DISTANCE OF 345.49 FEET TO A POINT OF CURVATURE OF A CURVE CONCAVE WESTERLY, HAVING A RADIUS OF 970.0 FEET; THENCE ALONG AND WITH THE

ARC OF SAID CURVE, A CHORD BEARING OF SOUTH 06°47'19" EAST AND A CHORD DISTANCE OF 183.45 FEET TO THE POINT OF TANGENCY OF SAID CURVE; THENCE SOUTH 01°21'45" EAST A DISTANCE OF 114.71 FEET TO A POINT OF CURVATURE OF A CURVE CONCAVE WESTERLY, HAVING A RADIUS OF 470.00 FEET; THENCE ALONG AND WITH THE ARC OF SAID CURVE, A CHORD BEARING OF SOUTH 00°48'18" WEST AND A CHORD DISTANCE OF 35.58 FEET TO A POINT ON SAID CURVE; THENCE NORTH 87°01'25" WEST A DISTANCE OF 123.05 FEET; THENCE SOUTH 45°50'12" WEST A DISTANCE OF 364.06 FEET; THENCE NORTH 00°45'59" WEST A DISTANCE OF 64.84 FEET; THENCE NORTH 08°45'17" WEST A DISTANCE OF 84.18 FEET; THENCE NORTH 17°11'35" WEST A DISTANCE OF 58.79 FEET; THENCE NORTH 13°14'17" WEST A DISTANCE OF 100.45 FEET; THENCE NORTH 32°13'41" EAST A DISTANCE OF 88.12 FEET; THENCE NORTH 72°45'31" EAST A DISTANCE OF 52.73 FEET; THENCE NORTH 84°16'33" EAST A DISTANCE OF 40.20 FEET; THENCE NORTH 51°49'11" EAST A DISTANCE OF 37.32 FEET; THENCE NORTH 73°41'21" WEST A DISTANCE OF 50.44 FEET; THENCE NORTH 35°39'49" WEST A DISTANCE OF 45.10 FEET; THENCE SOUTH 84°33'51" WEST A DISTANCE OF 53.47 FEET; THENCE NORTH 02°56'32" EAST A DISTANCE OF 59.41 FEET; THENCE NORTH 30°07'43" WEST A DISTANCE OF 67.45 FEET; THENCE SOUTH 79°49'05" WEST A DISTANCE OF 62.69 FEET; THENCE SOUTH 52°25'04" WEST A DISTANCE OF 48.53 FEET; THENCE SOUTH 45°11'47" WEST A DISTANCE OF 24.46 FEET; THENCE SOUTH 03°44'38" WEST A DISTANCE OF 67.03 FEET; THENCE SOUTH 03°23'47" EAST A DISTANCE OF 68.52 FEET; THENCE SOUTH 05°45'20" WEST A DISTANCE OF 5.02 FEET TO THE POINT OF BEGINNING OF CONSERVATION PARCEL 4, HEREIN DESCRIBED.

FROM THE POINT OF BEGINNING CONTINUE SOUTH 05°45'20" WEST A DISTANCE OF 71.96 FEET; THENCE SOUTH 07°30'36" EAST A DISTANCE OF 50.32 FEET; THENCE SOUTH 02°15'49" EAST A DISTANCE OF 73.65 FEET; THENCE SOUTH 04°43'49" WEST A DISTANCE OF 44.41 FEET; THENCE SOUTH 03°42'29" WEST A DISTANCE OF 4.61 FEET; THENCE SOUTH 89°38'25" WEST A DISTANCE OF 1614.02 FEET; THENCE NORTH 34°50'37" WEST, ALONG THE WESTERLY LINE OF THOSE AFOREMENTIONED LANDS KNOWN AS WETLAND AREA "C" AS DESCRIBED IN OFFICIAL RECORDS 3126 PAGE 910, A DISTANCE OF 30.35 FEET; THENCE NORTH 88°03'10" WEST, ALONG SAID WESTERLY LINE, A DISTANCE OF 56.34 FEET; THENCE NORTH 09°13'50" WEST, ALONG SAID WESTERLY LINE, A DISTANCE OF 219.26 FEET; THENCE NORTH 89°38'25" EAST A DISTANCE OF 1724.54 FEET TO THE POINT OF BEGINNING OF CONSERVATION PARCEL 4 DESCRIBED HEREIN.

CONTAINING 9.50 ACRES, MORE OR LESS.

MAP SHOWING SKETCH OF DESCRIPTION FOR
 CONSERVATION PARCELS AT TERRA PINES
 A PART OF SECTION 7, TOWNSHIP 7 SOUTH, RANGE 29 EAST,
 AND A PART OF SECTION 12, TOWNSHIP 7 SOUTH, RANGE 28 EAST,
 ST. JOHNS COUNTY, FLORIDA
 FOR: THE ST. JOHNS COUNTY
 ENVIRONMENTAL DIVISION.



POINT OF REFERENCE FOR SURVEY IS THE POINT OF THEZONIC

STATION 10+00

STATION 11+00

STATION 12+00

STATION 13+00

STATION 14+00

STATION 15+00

STATION 16+00

STATION 17+00

STATION 18+00

STATION 19+00

STATION 20+00

STATION 21+00

STATION 22+00

STATION 23+00

STATION 24+00

STATION 25+00

STATION 26+00

STATION 27+00

STATION 28+00

STATION 29+00

STATION 30+00

STATION 31+00

STATION 32+00

STATION 33+00

STATION 34+00

STATION 35+00

STATION 36+00

STATION 37+00

STATION 38+00

STATION 39+00

STATION 40+00

STATION 41+00

STATION 42+00

STATION 43+00

STATION 44+00

STATION 45+00

STATION 46+00

STATION 47+00

STATION 48+00

STATION 49+00

STATION 50+00

STATION 51+00

STATION 52+00

STATION 53+00

STATION 54+00

STATION 55+00

STATION 56+00

STATION 57+00

STATION 58+00

STATION 59+00

STATION 60+00

STATION 61+00

STATION 62+00

STATION 63+00

STATION 64+00

STATION 65+00

STATION 66+00

STATION 67+00

STATION 68+00

STATION 69+00

STATION 70+00

STATION 71+00

STATION 72+00

STATION 73+00

STATION 74+00

STATION 75+00

STATION 76+00

STATION 77+00

STATION 78+00

STATION 79+00

STATION 80+00

STATION 81+00

STATION 82+00

STATION 83+00

STATION 84+00

STATION 85+00

STATION 86+00

STATION 87+00

STATION 88+00

STATION 89+00

STATION 90+00

STATION 91+00

STATION 92+00

STATION 93+00

STATION 94+00

STATION 95+00

STATION 96+00

STATION 97+00

STATION 98+00

STATION 99+00



STATION 100+00

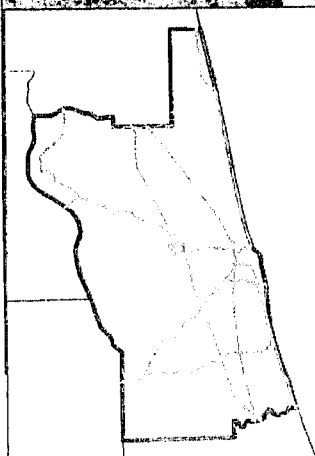
SECTION	CONSERVATION PARCEL	ACRES +/-	O.R.	P.C.
SECTION 1	CONSERVATION PARCEL 1	1.44	1928	113
SECTION 12	CONSERVATION PARCEL 2	1.44	1928	113
SECTION 12	CONSERVATION PARCEL 3	145.40	588	438
SECTION 12	CONSERVATION PARCEL 4	9.90	890	770
SECTION 12	CONSERVATION PARCEL 5	9.90	890	770
SECTION 12	CONSERVATION PARCEL 6	9.90	890	770

ST. JOHNS COUNTY LAND MANAGEMENT SYSTEMS
 SURVEYING AND MAPPING DIVISION
 500 SAN SEBASTIAN VIEW
 ST. AUGUSTINE, FLORIDA 32084
 Phone: (904) 209-0764

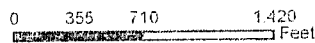
TERRA PINES
 CONSERVATION AREAS
 SKETCH OF DESCRIPTION
 FILE NUMBER: S-811-4



 Previous CEs
 Proposed CE for Duval/St. Johns Impacts Permit #40-109-28688-4



**Conservation Easement
 TerraPines Mitigation Site**
 Mitigation for Duval/St. Johns
 Steet Improvements



St. Johns County
 Growth Management Dept.
 Environmental Division

Map Prepared:
 Sept. 2010
 (904) 209-0802



2008 Aerial Imagery

DISCLAIMER.
 This map is for reference use only. Data provided are derived from multiple sources with varying levels of accuracy.