

RESOLUTION NO. 2010- 244
RESOLUTION OF THE BOARD OF COUNTY
COMMISSIONERS OF ST. JOHNS COUNTY, FLORIDA
APPROVING A PLAT FOR GREENLEAF DRIVE

WHEREAS, TOLOMATO COMMUNITY DEVELOPMENT DISTRICT, AS OWNER, has applied to the Board of County Commissioners of St. Johns County, Florida for approval to record a plat known as GREENLEAF DRIVE.

NOW, THEREFORE BE IT RESOLVED BY THE BOARD OF COUNTY COMMISSIONERS OF ST. JOHNS COUNTY, FLORIDA, as follows:

Section 1. The above-described subdivision plat and its dedicated areas depicted thereon are conditionally approved and accepted by the Board of County Commissioners of St. Johns County, Florida subject to Sections 2, 3, 4, 5 and 6.

Section 2. Alternate funding under the Greenleaf Drive Supplementary Alternate Assurances Agreement has been filed with the Clerk of Courts office.

Section 3. A Required Improvement Bond, (for maintenance) in the amount of \$209,822.90 will be required.

Section 4. The approval and acceptance described in Section 1 shall not take effect until the Clerk has received a title opinion, certificate, or policy pertaining to the real property that is the subject of the a forenamed subdivision plat which opinion, certificate or policy is in a form acceptable to the County Attorney or Assistant County Attorney.

Section 5. The Clerk is instructed to file and record the consent and joinder (s) to the plat executed by all mortgages identified in the title opinion or certificate of the title in Section 4.

Section 6. The approval and acceptance described in Section 1 shall not take effect until the plat has been signed by each of the following departments, person or offices:

- a) Chairman or Vice-Chairman of the Board of County Commissioners of St. Johns County, Florida;
- b) Office of the County Attorney;
- c) County Growth Management Department;
- d) Office of the County Surveyor; and
- e) Clerk of Courts.

The Clerk shall not sign or accept the Plat for recording until it has been signed by each of the above persons or entities described in a) through d) above. If the plat is not signed and accepted by the Clerk for recording within 14 days from the date hereof, then the above-described conditional approval shall automatically terminate. If the plat is signed by the Clerk on or before such time, the conditions described herein shall be deemed to have been met.

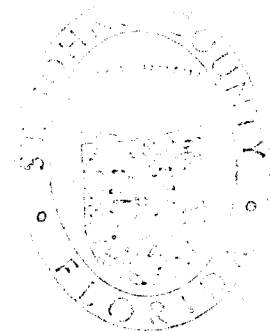
ADOPTED by the Board of County Commissioners of St. Johns County, Florida, this 2nd day of November, 2010.

BOARD OF COUNTY COMMISSIONERS
OF ST. JOHNS COUNTY, FLORIDA

BY: Ron Sanchez
Ron Sanchez, Chair

ATTEST: Cheryl Strickland

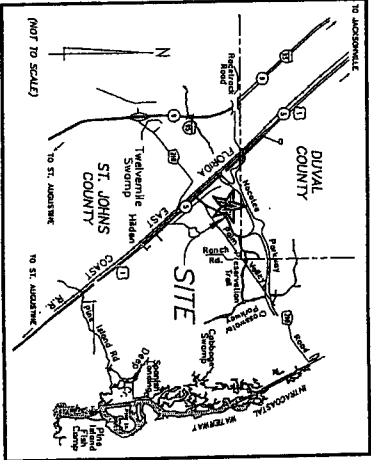
Pam Halterman
Deputy Clerk



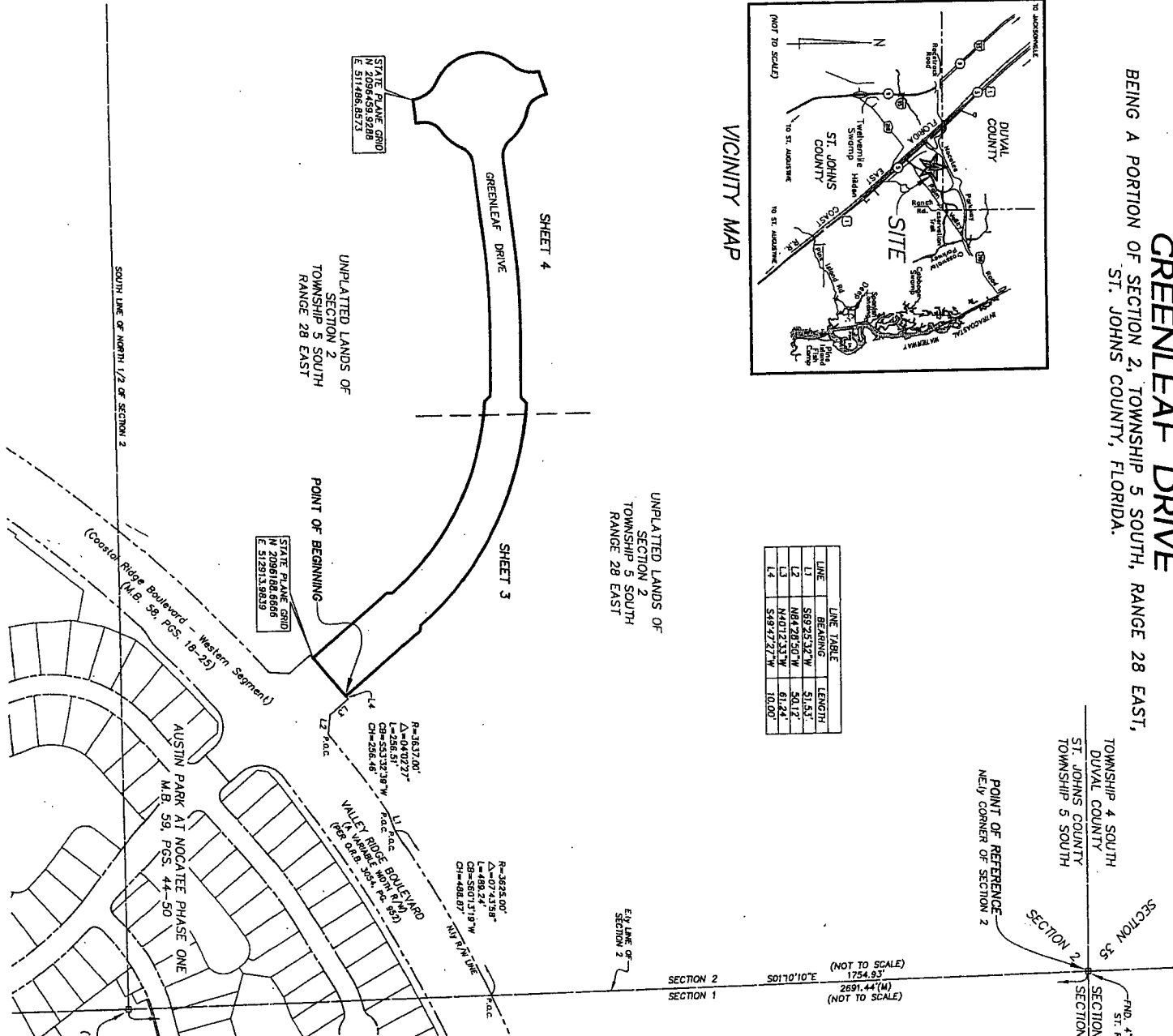
RENDITION DATE 11/4/10

GREENLEAF DRIVE

BEING A PORTION OF SECTION 2, TOWNSHIP 5 SOUTH, RANGE 28 EAST,
ST. JOHNS COUNTY, FLORIDA.

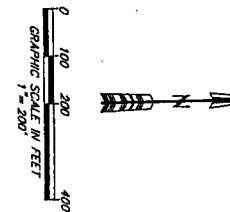


LINE	BEARING	LENGTH
L1	S69°25'32"W	51.53'
L2	N61°28'50"W	50.17'
L3	N40°12'53"W	61.24'
L4	S49°27'27"W	10.00'



LINE	BEARING	LENGTH
L1	S69°25'32"W	51.53'
L2	N61°28'50"W	50.17'
L3	N40°12'53"W	61.24'
L4	S49°27'27"W	10.00'

- NOTES
- 1) Bearings shown are referenced to the State Plane coordinates as indicated hereon and are based on the Eastern line of Section 2, Township 5 South, Range 28 East, as being South 07°10'10" East.
 - 2) Coordinates based on GPS observation of Station "TURNER 2" and Station "ELTZER" National Geodetic Survey 1991 adjustment. Station "TURNER 2" coordinates: N 2092335.8382 E 509877.0129 Station "ELTZER" coordinates: N 4205727.1899 E 534694.1854 coordinate datum: State Plane in U.S. survey feet (Florida East Zone 901, North American Datum 1983/1991.)
 - 3) NOTICE: This plat, as recorded in its graphic form, is the official depiction of the subdivided lands described herein and will in no circumstances be supplanted in authority by any other graphic or digital form of the plat. There may be additional restrictions that are not recorded on this plat that may be found in the Public Records of this county.
 - 4) Section lines and quarter section lines depicted hereon are graphic representations only and do not reflect field measure unless otherwise noted.
 - 5) The lands depicted hereon are subject to Developer and Utility Service Agreement described and recorded in Official Records Book 2358, Page 1979 of the Public Records of St. Johns County, Florida.
 - 6) The lands depicted hereon are subject to Construction Easement described and recorded in Official Records Book 2370, Page 1560 of the Public Records of St. Johns County, Florida.



- LEGEND
- DENOTES SET P.A.M., 4"x4" C.M.
 - STAMPED L.B.#224, W.B.D.
 - STAMPED L.B.#224, W.B.D.
 - DENOTES P.C.P., STAMPED L.B.#224
 - PERMANENT REFERENCE MONUMENT
 - CONCRETE MONUMENT
 - LICENSED BUSINESS
 - RAILROAD
 - CENTERLINE ANGLE
 - CHORD BEARING
 - CHORD DISTANCE
 - POINT OF TANGENCY
 - POINT ON CURVE
 - POINT OF CURVE
 - POINT OF BEGINNING
 - TABLED CURVE DATA
 - TABLED LINE DATA
 - RIGHT OF WAY
 - R/W
 - PAGE BOOK
 - PAGE BOOK
 - O.A.B.
 - O.A.B.
 - FIELD MEASURED DATA
 - FOUND

PREPARED BY:
ROBERT M. ANGAS ASSOCIATES, INC.
14775 OLD ST. AUGUSTINE ROAD
JACKSONVILLE, FL 32228 (904) 629-8550