

RESOLUTION NO. 2010- 41
RESOLUTION OF THE BOARD OF COUNTY
COMMISSIONERS OF ST. JOHNS COUNTY, FLORIDA
APPROVING A SUBDIVISION PLAT FOR COASTAL OAKS AT NOCATEE
PHASE 1 - REPLAT

WHEREAS, TOLL JACKSONVILLE LIMITED PARTNERSHIP, has applied to the Board of County Commissioners of St. Johns County, Florida for approval to record a subdivision plat known as COASTAL OAKS AT NOCATEE PHASE 1 REPLAT.

NOW, THEREFORE BE IT RESOLVED BY THE BOARD OF COUNTY COMMISSIONERS OF ST. JOHNS COUNTY, FLORIDA, as follows:

Section 1. The above-described subdivision plat and its dedicated areas depicted thereon are conditionally approved and accepted by the Board of County Commissioners of St. Johns County, Florida subject to Sections 2, 3, 4, 5 and 6.

Section 2. No Construction Bond will be required.

Section 3. No Maintenance Bond will be required.

Section 4. The approval and acceptance described in Section 1 shall not take effect until the Clerk has received a title opinion, certificate, or policy pertaining to the real property that is the subject of the a forenamed subdivision plat which opinion, certificate or policy is in a form acceptable to the County Attorney or Assistant County Attorney.

Section 5. The Clerk is instructed to file and record the consent and joinder (s) to the plat executed by all mortgages identified in the title opinion or certificate of the title in Section 4.

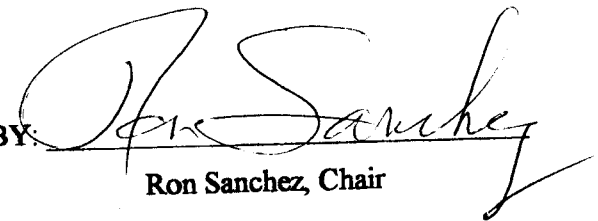
Section 6. The approval and acceptance described in Section 1 shall not take effect until the plat has been signed by each of the following departments, person or offices:

- a) Chairman or Vice-Chairman of the Board of County Commissioners of St. Johns County, Florida;
- b) Office of the County Attorney;
- c) County Growth Management Department;
- d) Office of the County Surveyor; and
- e) Clerk of Courts.

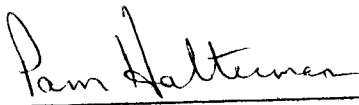
The Clerk shall not sign or accept the Plat for recording until it has been signed by each of the above persons or entities described in a) through d) above. If the plat is not signed and accepted by the Clerk for recording within 14 days from the date hereof, then the above-described conditional approval shall automatically terminate. If the plat is signed by the Clerk on or before such time, the conditions described herein shall be deemed to have been met.

ADOPTED by the Board of County Commissioners of St. Johns County, Florida, this 2nd day of March, 2010.

BOARD OF COUNTY COMMISSIONERS
OF ST. JOHNS COUNTY, FLORIDA

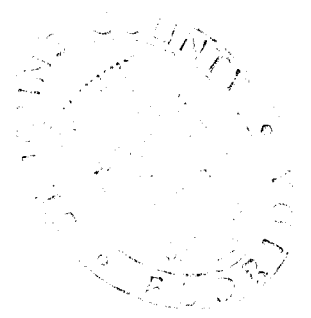
BY: 
Ron Sanchez, Chair

ATTEST: Cheryl Strickland



Deputy Clerk

RENDITION DATE 3/4/10

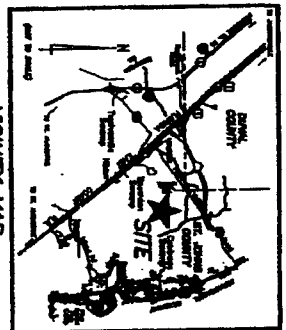
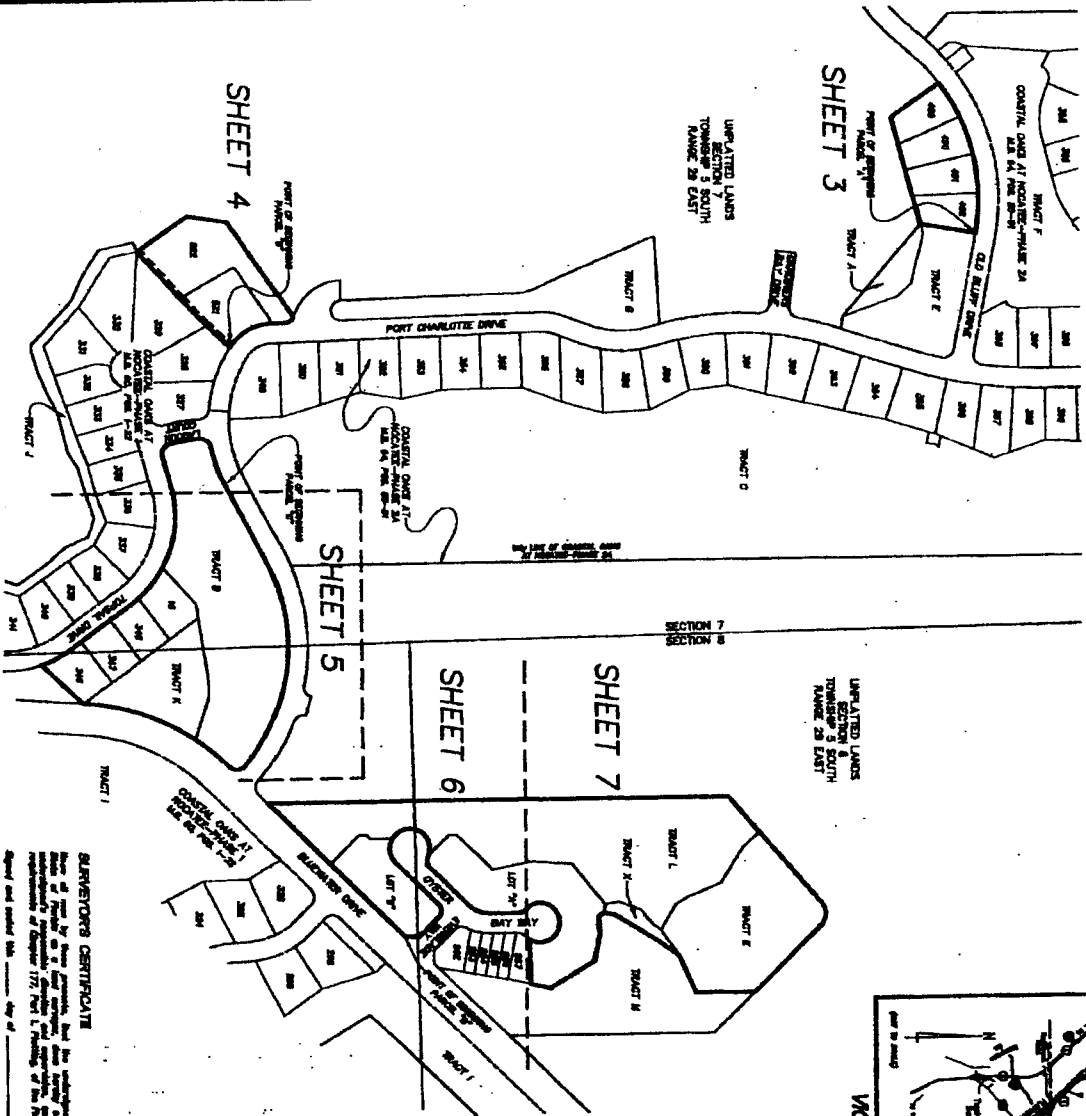


ATTACHMENT 2
PLAT MAP

COASTAL OAKS AT NOCATEE PHASE 1 REPLAT

BEING A REPLAT OF LOTS 346 THROUGH 349, LOTS 688 THROUGH 691 AND TRACTS B, E, K, L AND X, AS SHOWN ON THE PLAT OF COASTAL OAKS AT NOCATEE-PHASE 1, AS RECORDED IN MAP BOOK 60, PAGES 1 THROUGH 22 OF THE PUBLIC RECORDS OF ST. JOHN'S COUNTY, FLORIDA, TOGETHER WITH A PORTION OF SECTIONS 7 AND 8, TOWNSHIP 5 SOUTH, RANGE 29 EAST OF SAID COUNTY.

MAP BOOK PAGE
SHEET 2 OF 7 SHEETS



- LEGEND**
- SHOWN BY PINK, 5/8" CA.
 - SHOWN BY GREEN, 5/8" CA.
 - SHOWN BY BLUE, 5/8" CA.
 - SHOWN BY RED, 5/8" CA.
 - SHOWN BY BLACK, 5/8" CA.
 - SHOWN BY YELLOW, 5/8" CA.
 - SHOWN BY WHITE, 5/8" CA.
 - SHOWN BY BROWN, 5/8" CA.
 - SHOWN BY PURPLE, 5/8" CA.
 - SHOWN BY ORANGE, 5/8" CA.
 - SHOWN BY LIGHT BLUE, 5/8" CA.
 - SHOWN BY LIGHT GREEN, 5/8" CA.
 - SHOWN BY LIGHT RED, 5/8" CA.
 - SHOWN BY LIGHT BLACK, 5/8" CA.
 - SHOWN BY LIGHT YELLOW, 5/8" CA.
 - SHOWN BY LIGHT BROWN, 5/8" CA.
 - SHOWN BY LIGHT PURPLE, 5/8" CA.
 - SHOWN BY LIGHT ORANGE, 5/8" CA.
 - SHOWN BY LIGHT LIGHT BLUE, 5/8" CA.
 - SHOWN BY LIGHT LIGHT GREEN, 5/8" CA.
 - SHOWN BY LIGHT LIGHT RED, 5/8" CA.
 - SHOWN BY LIGHT LIGHT BLACK, 5/8" CA.
 - SHOWN BY LIGHT LIGHT YELLOW, 5/8" CA.
 - SHOWN BY LIGHT LIGHT BROWN, 5/8" CA.
 - SHOWN BY LIGHT LIGHT PURPLE, 5/8" CA.
 - SHOWN BY LIGHT LIGHT ORANGE, 5/8" CA.

- NOTES**
- 1) Dimensions shown on this plat are subject to the State Plane projection as indicated herein and are based on the coordinates of the State Plane as shown on the Florida State Plane Map.
 - 2) Dimensions shown on this plat are subject to the State Plane projection as indicated herein and are based on the coordinates of the State Plane as shown on the Florida State Plane Map.
 - 3) NOTICE: This plat is prepared in the English language, to the effect that the English language shall prevail in the event of any conflict between the English and Spanish versions of this plat. The English version of this plat shall prevail in the event of any conflict between the English and Spanish versions of this plat.
 - 4) The lot and lot area shown herein are subject to a possible re-division of the proposed block, and are not guaranteed as shown "AS-BUILT".
 - 5) The lot and lot area shown herein are subject to a possible re-division of the proposed block, and are not guaranteed as shown "AS-BUILT".
 - 6) The lot and lot area shown herein are subject to a possible re-division of the proposed block, and are not guaranteed as shown "AS-BUILT".
 - 7) The lot and lot area shown herein are subject to a possible re-division of the proposed block, and are not guaranteed as shown "AS-BUILT".
 - 8) The lot and lot area shown herein are subject to a possible re-division of the proposed block, and are not guaranteed as shown "AS-BUILT".
 - 9) The lot and lot area shown herein are subject to a possible re-division of the proposed block, and are not guaranteed as shown "AS-BUILT".
 - 10) The lot and lot area shown herein are subject to a possible re-division of the proposed block, and are not guaranteed as shown "AS-BUILT".

HERNANDEZ ENGINEERING

REPLAT CERTIFICATE

I, the undersigned, being duly sworn, depose and say that the above plat is a true and correct copy of the original plat as recorded in the public records of St. John's County, Florida, and that the same is a true and correct copy of the original plat as recorded in the public records of St. John's County, Florida.

Subscribed and sworn to before me this _____ day of _____, A.D. 2008.

FORWARDED BY:
ROBERT M. ANGAS ASSOCIATES, INC.
14778 OLD ST. AUGUSTINE ROAD
JACKSONVILLE, FL 32218 (904) 945-0880
CORPORATE OR ADMINISTRATIVE MAIL IS 5864