

RESOLUTION NO. 2011- 143
RESOLUTION OF THE BOARD OF COUNTY
COMMISSIONERS OF ST. JOHNS COUNTY, FLORIDA
APPROVING A PLAT FOR NOCATEE PARKWAY PHASE 2

WHEREAS, TOLOMATO COMMUNITY DEVELOPMENT DISTRICT., AS OWNER, has applied to the Board of County Commissioners of St. Johns County, Florida for approval to record a plat known as NOCATEE PARKWAY PHASE 2.

NOW, THEREFORE BE IT RESOLVED BY THE BOARD OF COUNTY COMMISSIONERS OF ST. JOHNS COUNTY, FLORIDA, as follows:

Section 1. The above-described subdivision plat and its dedicated areas depicted thereon are conditionally approved and accepted by the Board of County Commissioners of St. Johns County, Florida subject to Sections 2, 3, 4, 5 and 6.

Section 2. A Required Improvements Bond for construction is not required.

Section 3. A Required Improvements Bond in the amount of \$2,515,950.00 for maintenance, has been filed with the Clerk of Courts Office

Section 4. The approval and acceptance described in Section 1 shall not take effect until the Clerk has received a title opinion, certificate, or policy pertaining to the real property that is the subject of the aforementioned subdivision plat, which opinion, certificate or policy is in a form acceptable to the County Attorney or Assistant County Attorney.

Section 5. The Clerk is instructed to file and record the consent and joinder (s) to the plat executed by all mortgages identified in the title opinion or certificate of the title in Section 4.

Section 6. The approval and acceptance described in Section 1 shall not take effect until the plat has been signed by each of the following departments, person or offices:

- a) Chairman or Vice-Chairman of the Board of County Commissioners of St. Johns County, Florida;
- b) Office of the County Attorney;
- c) County Growth Management Department;
- d) Office of the County Surveyor; and
- e) Clerk of Courts.

The Clerk shall not sign or accept the Plat for recording until it has been signed by each of the above persons or entities described in a) through d) above. If the plat is not signed and accepted by the Clerk for recording within 14 days from the date hereof, then the above-described conditional approval shall automatically terminate. If the plat is signed by the Clerk on or before such time, the conditions described herein shall be deemed to have been met.

ADOPTED by the Board of County Commissioners of St. Johns County, Florida, this 7th day of June, 2011.

BOARD OF COUNTY COMMISSIONERS
OF ST. JOHNS COUNTY, FLORIDA

BY: _____


J. Ken Bryan, Chair

ATTEST: Cheryl Strickland



Deputy Clerk

RENDITION DATE 6/7/11



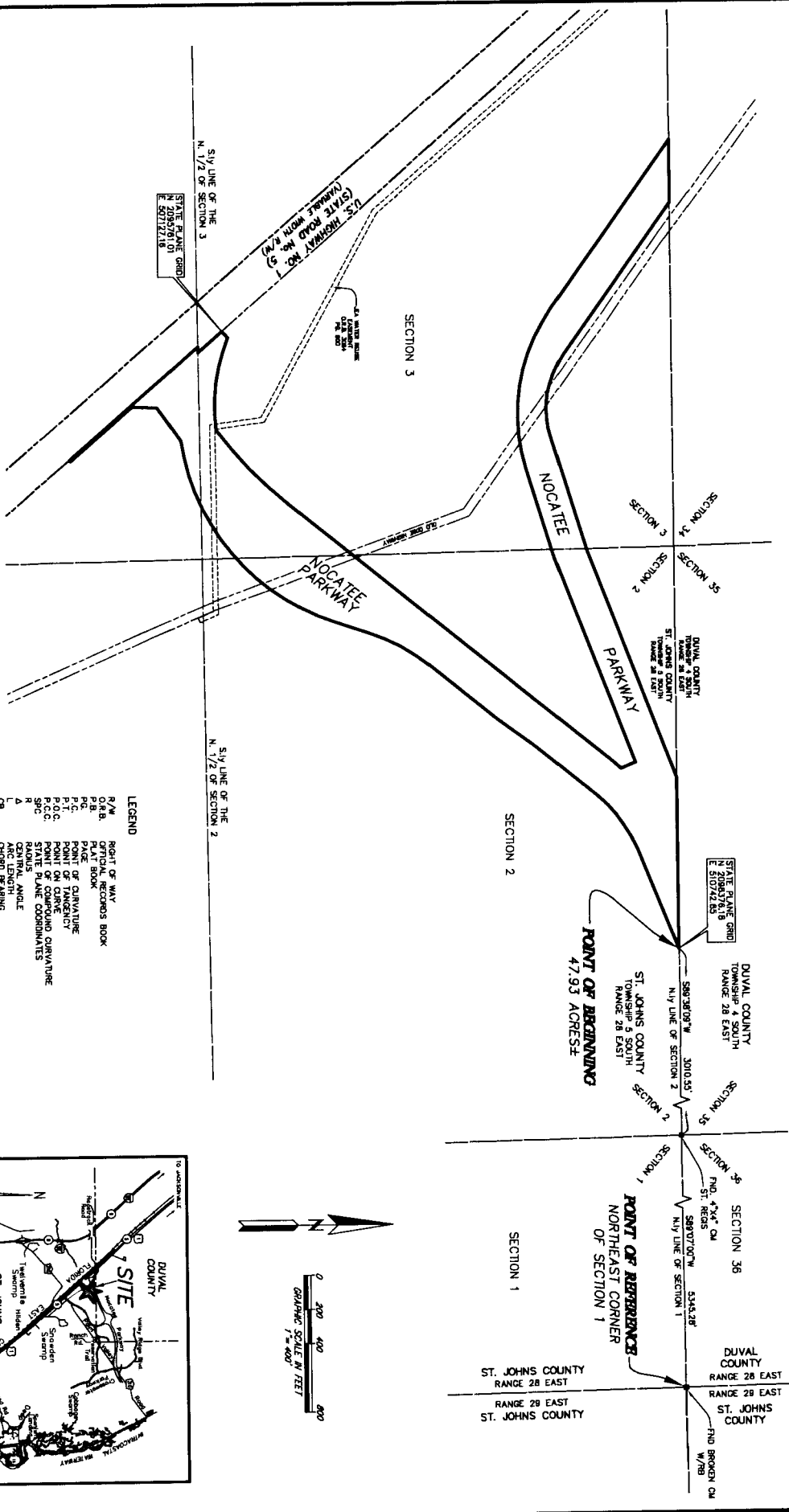
Attachment 2

Plat Map

NOCATEE PARKWAY PHASE 2

A PORTION OF SECTIONS 2 AND 3, TOWNSHIP 5 SOUTH, RANGE 28 EAST,
ST. JOHNS COUNTY, FLORIDA.

MAP BOOK PAGE
SHEET 2 OF 7 SHEETS

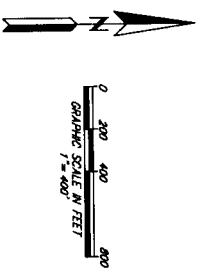
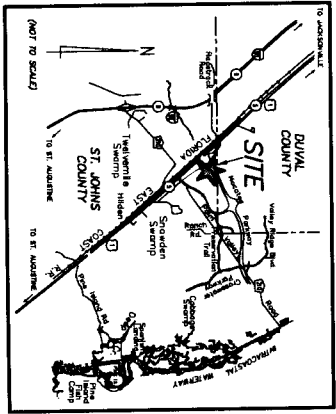


LEGEND

R/W	RIGHT OF WAY
R/B	RECORDS BOOK
P.B.	PLAT BOOK
P.C.	PLATE
P.C.	POINT OF CURVATURE
P.C.	POINT OF TANGENCY
P.C.	POINT ON CURVE
P.C.C.	POINT OF COMPOUND CURVATURE
S.P.C.	SPIRAL FLANE COORDINATES
A	CENTRAL ANGLE
C	ARC LENGTH
CH	CHORD DISTANCE
LD	LICENSED BUSINESS
LD	IDENTIFICATION
LD	CONCRETE MONUMENT
RD	REBAR AND CAP
RD	REBAR
RD	REBAR AND CAP
C/A	CENTERLINE
D	DENOTES SET 4"x4" CA LB 3524,
UNLESS OTHERWISE NOTED	
POP	PERMANENT CONTROL POINT
LI	TABULATED LINE DATA
LI	FLORIDA DEPARTMENT OF TRANSPORTATION
F.A.O.T.	FLORIDA DEPARTMENT OF TRANSPORTATION

- NOTES:**
- 1) BEARINGS SHOWN ARE REFERENCED TO THE STATE PLANE COORDINATES AS INDICATED HEREON AND ARE BASED ON THE NORTHERLY LINE OF SECTION 1, TOWNSHIP 5 SOUTH, RANGE 28 EAST, AS BEING SOUTH 89°07'00" WEST.
 - 2) COORDINATES BASED ON GPS OBSERVATION OF STATION TOURBIN 2 AND STATION TELTZER, NATIONAL GEODETIC SURVEY 1981 ADJUSTMENT.
STATION TOURBIN 2 COORDINATES: N 2092335.8352 E 509877.0728
STATION TELTZER COORDINATES: N 2030457.8928 E 524604.1824
COORDINATE DATUM: STATE PLANE N U.S. SURVEY FEET (LONDON EAST ZONE 901, N.A.D. 1983/1981)
 - 3) SECTION LINES AND QUARTER SECTION LINES DEPICTED HEREON ARE GRAPHIC REPRESENTATIONS ONLY AND DO NOT REFLECT FIELD MEASURE UNLESS OTHERWISE NOTED.
 - 4) THE LANDS DEPICTED HEREON ARE SUBJECT TO DEVELOPER AND UTILITY SERVICE AGREEMENT DESCRIBED AND RECORDED IN ORIGINAL RECORDS BOOK 2359, PAGE 1979 OF THE PUBLIC RECORDS OF ST. JOHNS COUNTY, FLORIDA.
 - 5) THE LANDS DEPICTED HEREON ARE SUBJECT TO CONSTRUCTION EASEMENT DESCRIBED AND RECORDED IN ORIGINAL RECORDS BOOK 2374, PAGE 1960 OF THE PUBLIC RECORDS OF ST. JOHNS COUNTY, FLORIDA.

NOTICE: THIS PLAN, AS RECORDED IN ITS GRAPHIC FORM, IS THE ORIGINAL AND SHALL BE THE AUTHORITY IN ALL CASES. ANY AND ALL OTHER GRAPHIC OR DIGITAL FORM OF THIS PLAN, THERE MAY BE, ADOPTED, REPRODUCED, OR OTHERWISE USED, SHALL BE VOID AND OF NO EFFECT UNLESS IT IS IDENTICAL TO THE ORIGINAL RECORDS OF THIS COUNTY.



PREPARED BY:
ROBERT M. ANGAS ASSOCIATES, INC.
14775 OLD ST. AUGUSTINE ROAD
JACKSONVILLE, FL 32256 (904) 642-5350
CERTIFICATE OF AUTHORIZATION NO. LB 3524