

RESOLUTION NO. 2011- 82

A RESOLUTION BY THE BOARD OF COUNTY COMMISSIONERS OF ST. JOHNS COUNTY, FLORIDA, APPROVING THE TERMS AND AUTHORIZING THE EXECUTION OF A CONSENT AND JOINDER TO AN EASEMENT FOR FLORIDA POWER AND LIGHT COMPANY TO CROSS AND USE A PLATTED DRAINAGE EASEMENT DEDICATED TO ST. JOHNS COUNTY.

RECITALS

WHEREAS, St. Johns County School Board (“School Board”) has plans to expand Hartley Elementary School which requires the School Board to grant an easement to Florida Power and Light Company (“FPL”) for utility lines to provide power to the new building; and

WHEREAS, the proposed easement is 10 feet in width and runs along a westerly portion of the School Board’s property and crosses a platted 30 foot drainage easement dedicated to St. Johns County (“County”) on the recorded plat of Replat of St. Augustine Shores Unit Two; and

WHEREAS, the School Board and FPL have requested from the County to join in the grant of the 10 foot easement by executing a Consent and Joinder, attached hereto as Exhibit “A”, incorporated by reference and made a part hereof, to allow FPL to cross and use the County easement for the above mentioned purpose; and

WHEREAS, if the Consent and Joinder is authorized by the Board of County Commissioners and is executed, the original will be attached to the easement given by the School Board to FPL; and

WHEREAS, St. Johns County Engineering and Road and Bridge Departments have no objection to the FPL use of the County easement as the utilities will be 4 feet underground and encased in concrete and would not impede any future drainage needs the County may have for the easement.

NOW, THEREFORE BE IT RESOLVED BY THE BOARD OF COUNTY COMMISSIONERS OF ST. JOHNS COUNTY, FLORIDA, as follows:

Section 1. The above Recitals are incorporated by reference into the body of this Resolution and such Recitals are adopted as findings of fact.

Section 2. The attached Consent and Joinder is hereby approved and the County Administrator is authorized to execute the document to be attached to the Grant of Easement from the School Board to FPL.

Section 3. The Clerk is instructed to file this Resolution in the Public Records of St. Johns County, Florida.

Section 4. To the extent that there are typographical and/or administrative errors that do not change the tone, tenor, or concept of this Resolution, then this Resolution may be revised without subsequent approval by the Board of County Commissioners.

PASSED AND ADOPTED this 19th day of April, 2011.

**BOARD OF COUNTY COMMISSIONERS
OF ST. JOHNS COUNTY, FLORIDA**

By: 
J. Ken Bryan, Chair

ATTEST: Cheryl Strickland, Clerk

By: Pam Halterman
Deputy Clerk

RESOLUTION DATE 04/21/11



CONSENT AND JOINDER

St. Johns County, Florida, a political subdivision of the State of Florida, has a drainage easement interest in the land described as Tract A-F of Replat of St. Augustine Shores Unit Two, as recorded in Map Book 13, pages 114 through 124, of the public records of St. Johns County, Florida, and has caused this instrument to be signed solely in evidence of its consent and joinder in and to this 10 foot easement granted from St. Johns County School Board to Florida Power and Light Company as to the portion that crosses said drainage easement.

Signed, sealed and delivered
in the presence of:

ST. JOHNS COUNTY, FLORIDA,
a political subdivision of the State
of Florida

Witness

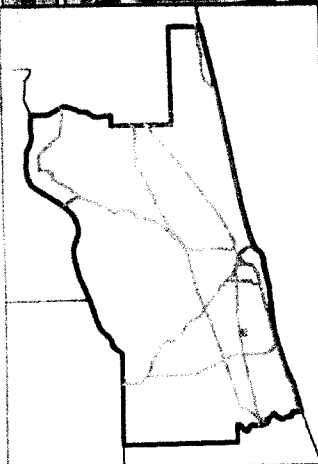
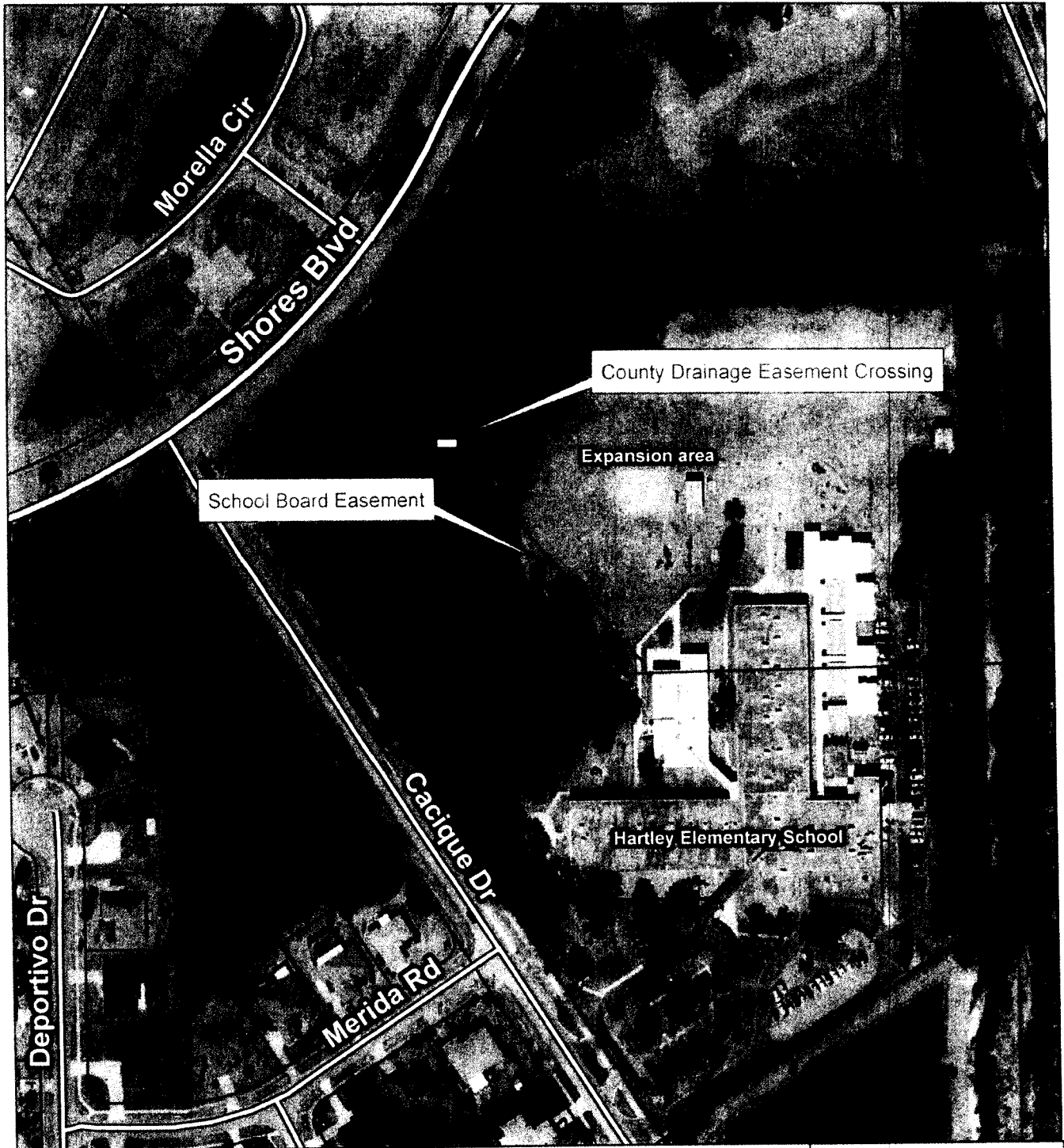
By: _____
Michael D. Wanchick,
County Administrator

Witness

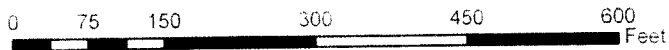
STATE OF FLORIDA
COUNTY OF ST. JOHNS

The foregoing instrument was acknowledged before me this ____ day of _____, 2011, by Michael D. Wanchick, as County Administrator of St. Johns County, Florida, a political subdivision of the State of Florida, on behalf of the County, who is personally known to me or has produced _____ as identification.

Notary Public
My Commission Expires: _____



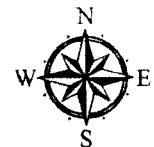
**Hartley Elementary School
FPL Easement**
County Drainage Easement Crossing



St. Johns County
Land Mgmt Systems
Real Estate Division



Map Prepared:
March 14, 2011
(904) 209-0790



**2008 Color Aerial
Imagery Map**

DISCLAIMER.
This map is for reference use only. Data provided are derived from multiple sources with varying levels of accuracy.