

RESOLUTION NO. 2012- 102
RESOLUTION OF THE BOARD OF COUNTY
COMMISSIONERS OF ST. JOHNS COUNTY, FLORIDA
APPROVING A PLAT FOR COASTAL OAKS AT NOCATEE PHASE 2G-UNIT 1.

WHEREAS, TOLL JACKSONVILLE LIMITED PARTNERSHIP, has applied to the Board of County Commissioners of St. Johns County, Florida for approval to record a plat known as COASTAL OAKS AT NOCATEE PHASE 2G-UNIT 1.

NOW, THEREFORE BE IT RESOLVED BY THE BOARD OF COUNTY COMMISSIONERS OF ST. JOHNS COUNTY, FLORIDA, as follows:

Section 1. The above-described subdivision plat and its dedicated areas depicted thereon are conditionally approved and accepted by the Board of County Commissioners of St. Johns County, Florida subject to Sections 2, 3, 4, 5 and 6.

Section 2. A Required Improvement Bond in the amount of \$53,639.15 has been filed with the Clerk of Courts Office.

Section 3. A Required Improvement Bond in the amount of \$39,954.15 will be required for maintenance.

Section 4. The approval and acceptance described in Section 1 shall not take effect until the Clerk has received a title opinion, certificate, or policy pertaining to the real property that is the subject of the a forenamed subdivision plat which opinion, certificate or policy is in a form acceptable to the County Attorney or Assistant County Attorney.

Section 5. The Clerk is instructed to file and record the consent and joinder (s) to the plat executed by all mortgages identified in the title opinion or certificate of the title in Section 4.


Section 6. The approval and acceptance described in Section 1 shall not take effect until the plat has been signed by each of the following departments, person or offices:

- a) Chairman or Vice-Chairman of the Board of County Commissioners of St. Johns County, Florida;
- b) Office of the County Attorney;
- c) County Growth Management Department;
- d) Office of the County Surveyor; and
- e) Clerk of Courts.


The Clerk shall not sign or accept the Plat for recording until it has been signed by each of the above persons or entities described in a) through d) above. If the plat is not signed and accepted by the Clerk for recording within 14 days from the date hereof, then the above-described conditional approval shall automatically terminate. If the plat is signed by the Clerk on or before such time, the conditions described herein shall be deemed to have been met.

ADOPTED by the Board of County Commissioners of St. Johns County, Florida, this 3rd day of April, 2012.

BOARD OF COUNTY COMMISSIONERS
OF ST. JOHNS COUNTY, FLORIDA

BY: 
Mark P. Miner, Chair

ATTEST: Cheryl Strickland



Deputy Clerk

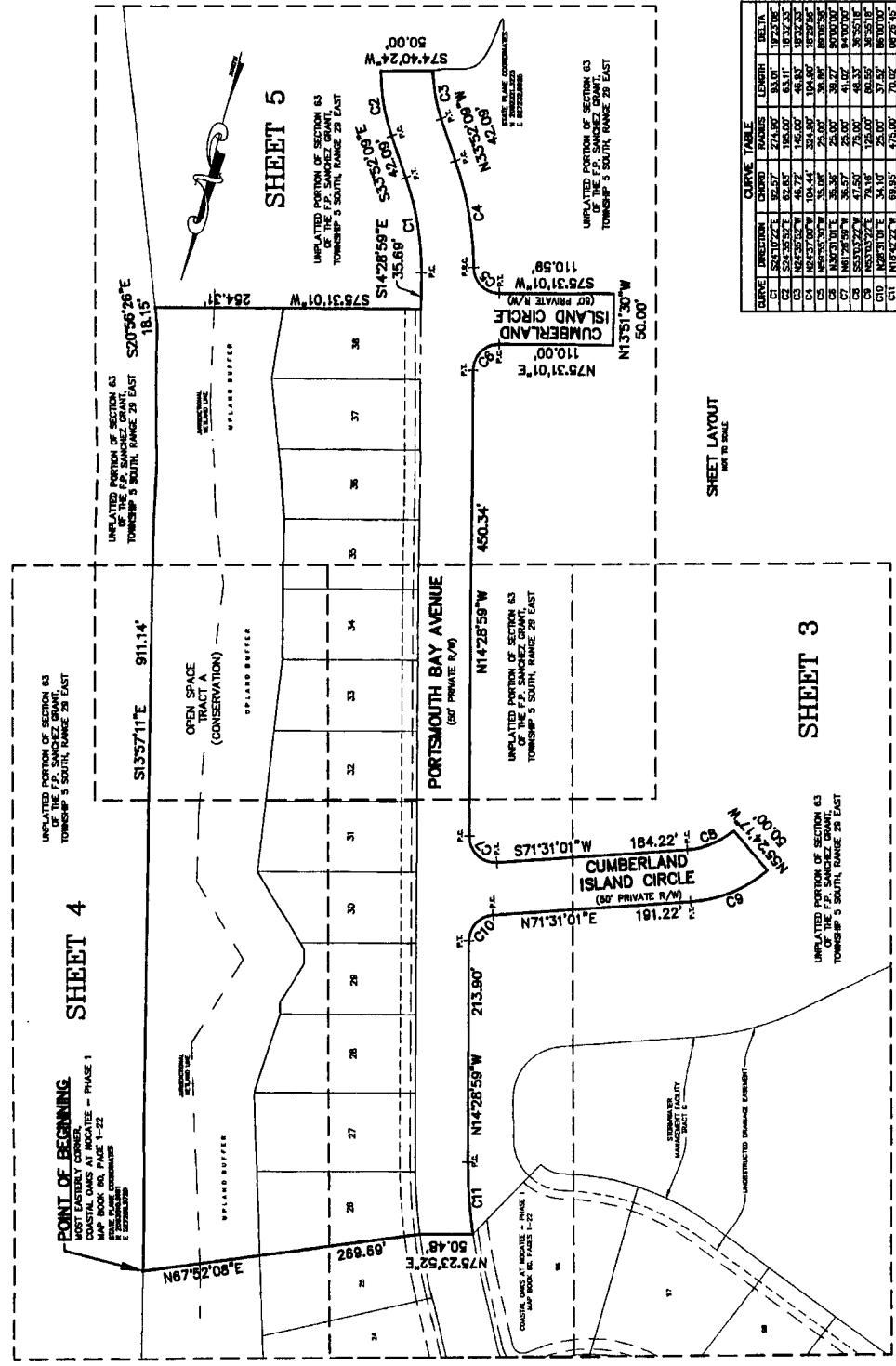
RENDITION DATE 4/5/12



Attachment 2

Plat Map

COASTAL OAKS AT NOCATEE ~ PHASE 2G-UNIT 1
 A PORTION OF SECTION 63 OF THE F.P. SANCHEZ GRANT, TOWNSHIP 5 SOUTH, RANGE 29 EAST, ST. JOHNS COUNTY, FLORIDA

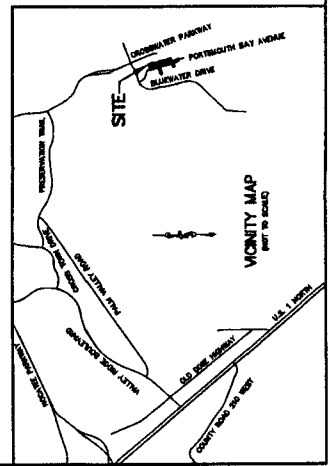


CURVE TABLE

CURVE	DIRECTION	CHORD	RADIUS	LENGTH	DELTA
C1	S20°10'22"E	82.87'	24.90'	81.07'	172.21°
C2	S53°52'09"E	42.99'	14.60'	46.83'	187.13°
C3	S14°28'59"E	104.44'	329.85'	104.90'	187.95°
C4	N42°55'30"W	35.08'	25.00'	36.08'	89.03°
C5	N71°31'01"E	36.97'	26.00'	38.07'	84.00°
C6	N79°31'01"E	47.50'	35.00'	48.52'	90.00°
C7	N14°28'59"W	78.18'	239.00'	78.00'	180.00°
C8	N14°28'59"W	78.18'	239.00'	78.00'	180.00°
C9	N14°28'59"W	78.18'	239.00'	78.00'	180.00°
C10	N14°28'59"W	78.18'	239.00'	78.00'	180.00°
C11	N14°28'59"W	78.18'	239.00'	78.00'	180.00°

SHEET LAYOUT
 NOT TO SCALE

- NOTES:**
- BEARINGS SHOWN HEREIN ARE REFERENCE TO THE STATE PLANE COORDINATE SYSTEM.
 - NOTICE: THIS PLAN, AS RECORDED IN ITS CHAINING FORM, IS THE OFFICIAL RECORD OF THIS SURVEY. ANY REVISIONS, AMENDMENTS, AND CORRECTIONS MUST BE SUPPLEMENTED IN AUTHORITY BY ANY OTHER CHAINING OR DIGITAL FORM OF THE PLAN. THERE MAY BE ADDITIONAL CHANGES TO THIS PLAN THAT ARE NOT SHOWN HEREIN.
 - COORDINATES BASED ON GPS OBSERVATION OF STATION "DURBIN 2" AND STATION "BLIZZEY" NATIONAL GEODETIC SURVEY 1989 ADJUSTMENT. STATION "BLIZZEY" COORDINATES: N 2000457.8999 E 506684.1084. STATION "DURBIN 2" COORDINATES: N 2000457.8999 E 506684.1084.
 - NO CONSTRUCTION, FILLING, REMOVAL OF EARTH, CUTTING OF TREES OR OTHER PLANTS SHALL TAKE PLACE WITHIN THE BOUNDARIES OF THE OPEN SPACE TRACT A, OTHER THAN THAT WHICH IS NECESSARY TO MAINTAIN OR IMPROVE THE REGULATORY PURPOSES WITH JURISDICTION OVER SUCH WETLANDS. IT IS THE RESPONSIBILITY OF THE APPLICANT TO OBTAIN ALL NECESSARY PERMITS AND APPROVALS FROM THE APPROPRIATE AGENCIES PRIOR TO THE BEGINNING OF WORK. ANY VIOLATION OF THESE REGULATIONS MAY BE CAUSE FOR THE REVOCATION OF THIS PLAN AND THE WITHDRAWAL OF CERTAIN ENCUMBRANCES AND RIGHTS FOR FLORIDA POWER AND LIGHT FOR THE CONSTRUCTION WITH THE UNDERGROUND ELECTRICAL DISTRIBUTION SYSTEM.



- LEGEND:**
- SET 4"X4" CONCRETE MONUMENT STAMPED LB 3867
 - SET 4"X4" CONCRETE MONUMENT STAMPED LB 3867
 - POINT OF BEGINNING
 - POINT OF TANGENCY
 - RIGHT OF WAY
 - UNPLATTED CURVE DATA