

RESOLUTION NO. 2012- 234
RESOLUTION OF THE BOARD OF COUNTY COMMISSIONERS
OF THE COUNTY OF ST. JOHNS, STATE OF FLORIDA APPROVING A PLAT
FOR LAS CALINAS PARCEL 3A UNIT 1 PHASE 1

WHEREAS, OWNER, TAYLOR MORRISON OF FLORIDA, INC., A FLORIDA CORPORATION, has applied to the Board of County Commissioners of St. Johns County, Florida, for approval to record a plat known as LAS CALINAS PARCEL 3A UNIT 1 PHASE 1.

NOW, THEREFORE, BE IT RESOLVED BY THE BOARD OF COUNTY COMMISSIONERS OF ST. JOHNS COUNTY, FLORIDA, as follows:

Section 1. The above-described subdivision plat and its dedicated areas depicted thereon are conditionally approved and accepted by the Board of County Commissioners of St. Johns County, Florida, subject to Sections 2, 3, 4, 5 and 6.

Section 2. A Required Improvements Bond in the amount of \$80,763.85 has been filed with the Clerk of Courts Office.

Section 3. A Required Improvements Bond in the amount of \$51,800.15 will be required for the installation of the final wearing surface course, upon As-built approval.

Section 4. The approval and acceptance described in Section 1 shall not take effect until the Clerk has received a title opinion, certificate, or policy pertaining to the real property that is the subject of the forenamed subdivision plat which opinion, certificate, or policy is in a form acceptable to the County Attorney or Assistant County Attorney.

Section 5. The Clerk is instructed to file and record the consent and joinder(s) to the plat executed by all mortgages identified in the title opinion or certificate of title in Section 4.

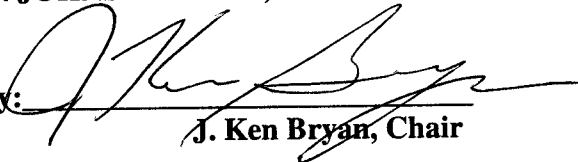
Section 6. The approval and acceptance described in Section 1 shall not take effect until the plat has been signed by each of the following departments, person or offices:

- a) Chairman or Vice-Chairman of the Board of County Commissioners of St. Johns County, Florida;
- b) Office of the County Attorney;
- c) County Growth Management Department;
- d) Office of the County Surveyor; and
- e) Clerk of Courts

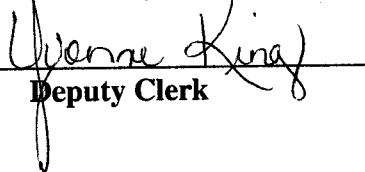
The Clerk shall not sign or accept the Plat for recording until it has been signed by each of the above persons or entities described in a) through d) above. If the plat is not signed and accepted by the Clerk for recording within 14 days from the date hereof, then the above-described conditional approval shall automatically terminate. If the plat is signed by the Clerk on or before such time, the conditions described herein shall be deemed to have been met.

ADOPTED by the Board of County Commissioners of St. Johns County, Florida
this 4th day of September, 2012.

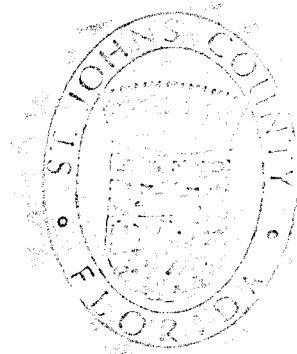
**BOARD OF COUNTY COMMISSIONERS
OF ST. JOHNS COUNTY,**

By: 
J. Ken Bryan, Chair

ATTEST: Cheryl Strickland

By: 
Deputy Clerk

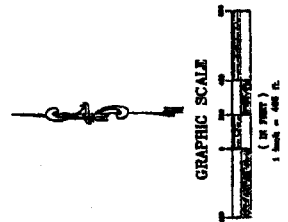
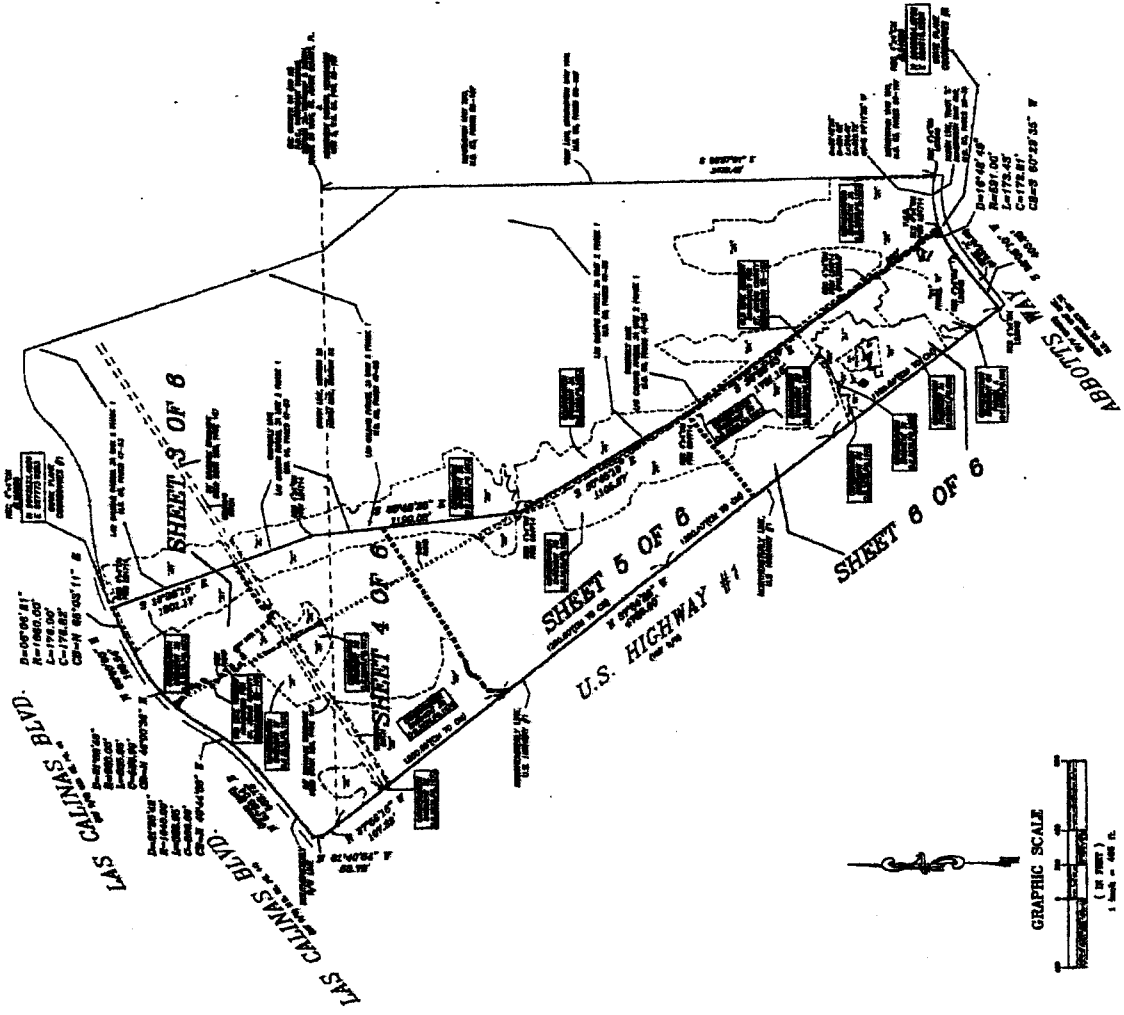
RENDITION DATE 09/06/12



Attachment 2

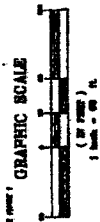
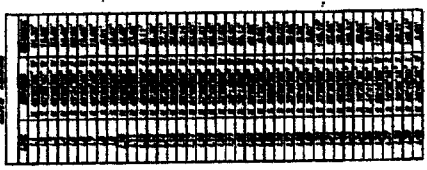
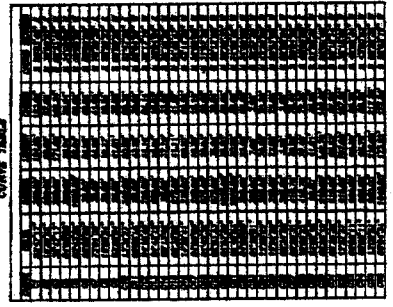
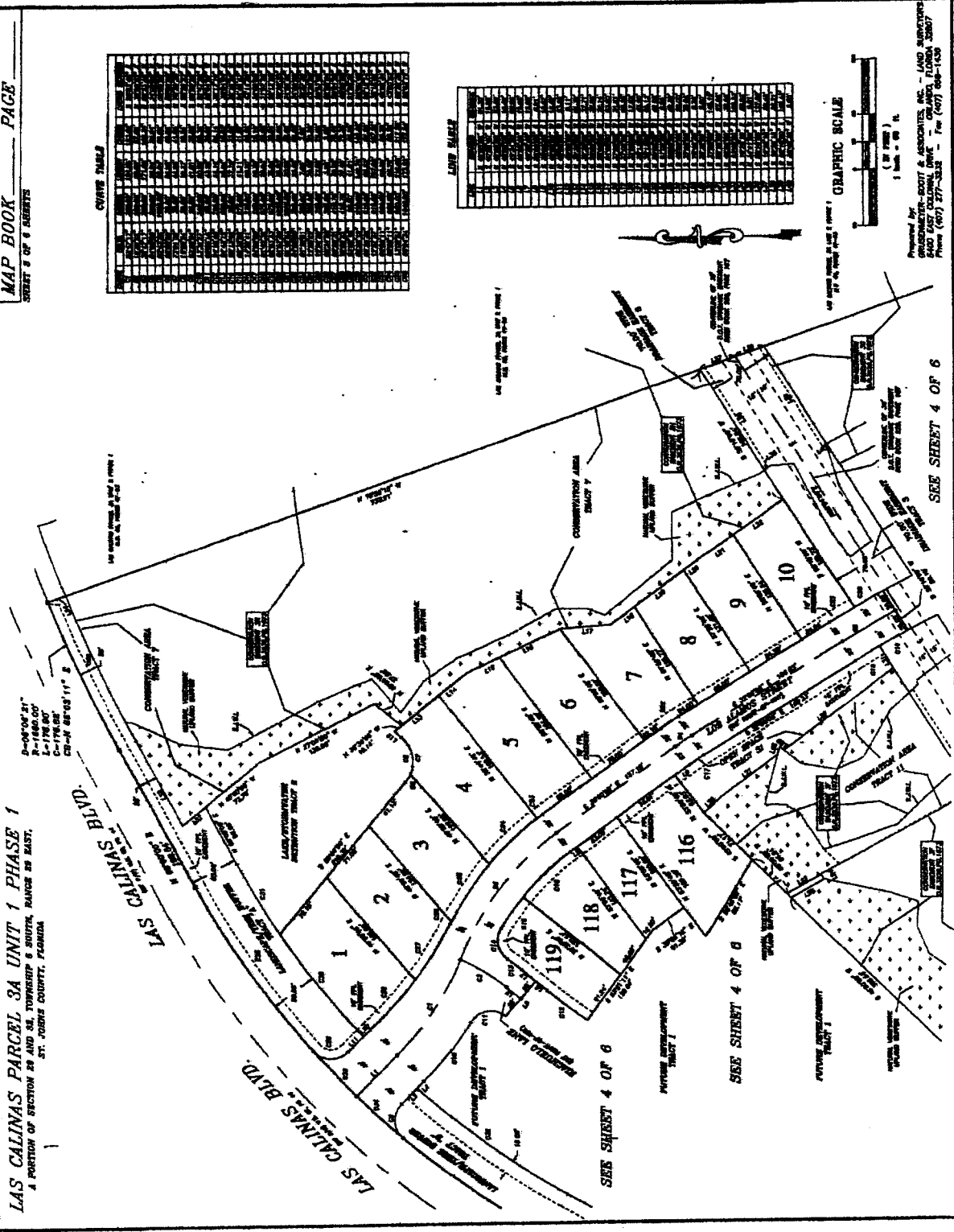
Plat Map

LAS CALINAS PARCEL 3A UNIT 1 PHASE 1
A PORTION OF SECTION 28 AND 29, TOWNSHIP 6 SOUTH, RANGE 29 EAST,
ST. JOHNS COUNTY, FLORIDA



Prepared by:
 CRUSKAMER-SCOTT & ASSOCIATES, INC. - LAND SURVEYORS
 5400 EAST COUNTY ROAD - PALM BEACH, FLORIDA 33410
 Phone (407) 877-5555 - Telex (607) 525-1434

LAS CALINAS PARCEL 3A UNIT 1 PHASE 1
A PORTION OF SECTION 29 AND 30, TOWNSHIP 6 SOUTH, RANGE 28 EAST,
ST. JOHNS COUNTY, FLORIDA



Prepared by
BRADSHAW-SCOTT & ASSOCIATES, INC. - LAND SURVEYORS
2440 EAST COLLEGE DRIVE - ORLANDO, FLORIDA 32807
Phone (407) 277-3333 - Fax (407) 608-1400

SEE SHEET 4 OF 6

SEE SHEET 4 OF 6

SEE SHEET 4 OF 6