

RESOLUTION NO. 2013- 194
RESOLUTION OF THE BOARD OF COUNTY
COMMISSIONERS OF ST. JOHNS COUNTY, FLORIDA
APPROVING A PLAT FOR LAS CALINAS PARCEL 3A UNIT 1 PHASE 2A.

WHEREAS, TAYLOR MORRISON OF FLORIDA, INC, A FLORIDA CORPORATION, AS OWNER, has applied to the Board of County Commissioners of St. Johns County, Florida for approval to record a plat known as LAS CALINAS PARCEL 3A UNIT 1 PHASE 2A.

NOW, THEREFORE BE IT RESOLVED BY THE BOARD OF COUNTY COMMISSIONERS OF ST. JOHNS COUNTY, FLORIDA, as follows:

Section 1. The above-described subdivision plat and its dedicated areas depicted thereon are conditionally approved and accepted by the Board of County Commissioners of St. Johns County, Florida subject to Sections 2, 3, 4, 5 and 6.

Section 2. A Required Improvement Bond in the amount of \$121,206.11 has been filed with the Clerk of Courts Office.

Section 3. A Required Improvement Bond in the amount of \$43,763.44 will be required for maintenance.

Section 4. The approval and acceptance described in Section 1 shall not take effect until the Clerk has received a title opinion, certificate, or policy pertaining to the real property that is the subject of the forenamed subdivision plat which opinion, certificate or policy is in a form acceptable to the County Attorney or Assistant County Attorney.

Section 5. The Clerk is instructed to file and record the consent and joinder (s) to the plat executed by all mortgages identified in the title opinion or certificate of the title in Section 4.

Section 6. The approval and acceptance described in Section 1 shall not take effect until the plat has been signed by each of the following departments, person or offices:

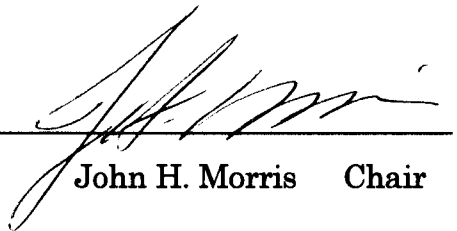
- a) Chairman or Vice-Chairman of the Board of County Commissioners of St. Johns County, Florida;
- b) Office of the County Attorney;
- c) County Growth Management Department;
- d) Office of the County Surveyor; and
- e) Clerk of Courts.

The Clerk shall not sign or accept the Plat for recording until it has been signed by each of the above persons or entities described in a) through d) above. If the plat is not signed and accepted by the Clerk for recording within 14 days from the date hereof, then the above-described conditional approval shall automatically terminate. If the plat is signed by the Clerk on or before such time, the conditions described herein shall be deemed to have been met.

ADOPTED by the Board of County Commissioners of St. Johns County, Florida, this 30th day of September, 2013.

BOARD OF COUNTY COMMISSIONERS
OF ST. JOHNS COUNTY, FLORIDA

BY: _____

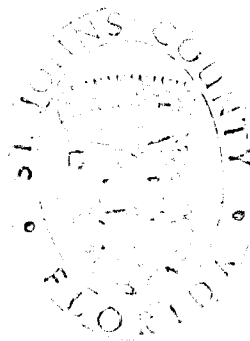

John H. Morris Chair

ATTEST: Cheryl Strickland



Deputy Clerk

RENDITION DATE 9/9/13



Attachment 2

Plat Map

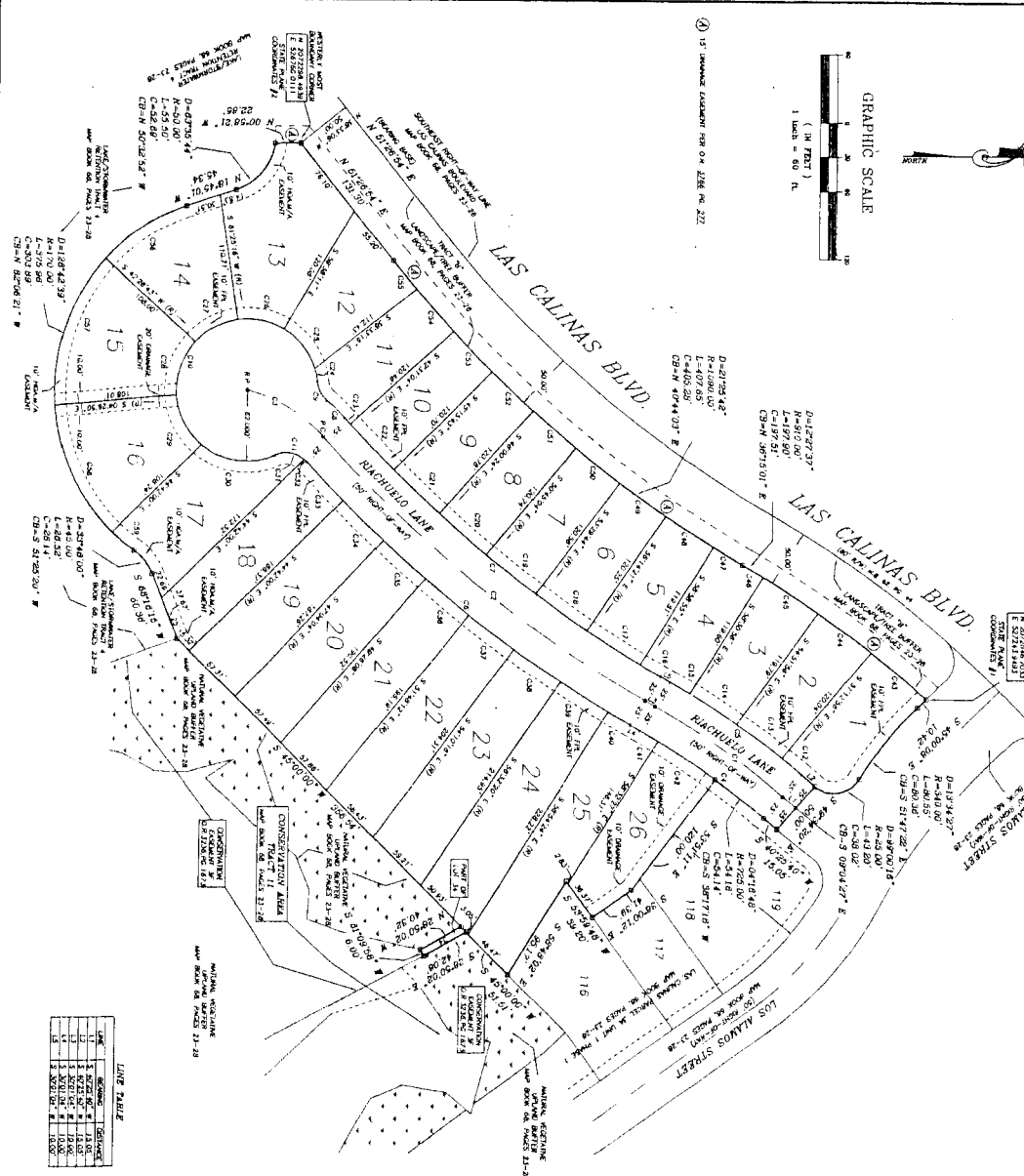
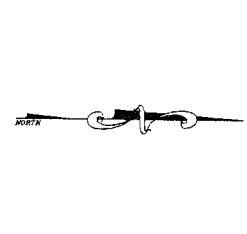
LAS CALINAS PARCEL 3A UNIT 1 PHASE 2A

SHEET 2 OF 2 SHEETS

MAP BOOK

PAGE

A PARCEL OF LAND BEING A REPEAT OF TRACT 1, LAS CALINAS PARCEL 3A UNIT 1 PHASE 2A AS RECORDED IN MAP BOOK 62, PAGES 23 THROUGH 28, PUBLIC RECORDS OF ST. JOHNS COUNTY, FLORIDA, Lying WITHIN SECTION 29, TOWNSHIP 5 SOUTH, RANGE 29 EAST, ST. JOHNS COUNTY, FLORIDA.



15' DRAINAGE EASEMENT FOR CW 2286 PER 222

D-1227237*
R-4108140*
L-4107465
C-4137531
C-4137531* E
C-4137531* E

REPLACEMENT LOGS
AS SHOWN ON SHEET 1
OF THIS MAP
CONFORMS TO

LOS ALAMOS STREET
APR 2008 PER PAGES 21-28

D-1227237*
R-4108140*
L-4107465
C-4137531
C-4137531* E
C-4137531* E

D-1227237*
R-4108140*
L-4107465
C-4137531
C-4137531* E
C-4137531* E

LINE TABLE

LINE	BEARING	DISTANCE
1	S 89° 57' 30" E	1.0000
2	S 89° 57' 30" E	1.0000
3	S 89° 57' 30" E	1.0000
4	S 89° 57' 30" E	1.0000
5	S 89° 57' 30" E	1.0000
6	S 89° 57' 30" E	1.0000
7	S 89° 57' 30" E	1.0000
8	S 89° 57' 30" E	1.0000
9	S 89° 57' 30" E	1.0000
10	S 89° 57' 30" E	1.0000
11	S 89° 57' 30" E	1.0000
12	S 89° 57' 30" E	1.0000
13	S 89° 57' 30" E	1.0000
14	S 89° 57' 30" E	1.0000
15	S 89° 57' 30" E	1.0000
16	S 89° 57' 30" E	1.0000
17	S 89° 57' 30" E	1.0000
18	S 89° 57' 30" E	1.0000
19	S 89° 57' 30" E	1.0000
20	S 89° 57' 30" E	1.0000
21	S 89° 57' 30" E	1.0000
22	S 89° 57' 30" E	1.0000
23	S 89° 57' 30" E	1.0000
24	S 89° 57' 30" E	1.0000
25	S 89° 57' 30" E	1.0000
26	S 89° 57' 30" E	1.0000

CONVEY TABLE

GRANT	DEED #	ACRES	OWNER	GRANT NUMBER
C1	173456	1.84	ST. JOHN'S COUNTY	173456
C2	173457	1.84	ST. JOHN'S COUNTY	173457
C3	173458	1.84	ST. JOHN'S COUNTY	173458
C4	173459	1.84	ST. JOHN'S COUNTY	173459
C5	173460	1.84	ST. JOHN'S COUNTY	173460
C6	173461	1.84	ST. JOHN'S COUNTY	173461
C7	173462	1.84	ST. JOHN'S COUNTY	173462
C8	173463	1.84	ST. JOHN'S COUNTY	173463
C9	173464	1.84	ST. JOHN'S COUNTY	173464
C10	173465	1.84	ST. JOHN'S COUNTY	173465
C11	173466	1.84	ST. JOHN'S COUNTY	173466
C12	173467	1.84	ST. JOHN'S COUNTY	173467
C13	173468	1.84	ST. JOHN'S COUNTY	173468
C14	173469	1.84	ST. JOHN'S COUNTY	173469
C15	173470	1.84	ST. JOHN'S COUNTY	173470
C16	173471	1.84	ST. JOHN'S COUNTY	173471
C17	173472	1.84	ST. JOHN'S COUNTY	173472
C18	173473	1.84	ST. JOHN'S COUNTY	173473
C19	173474	1.84	ST. JOHN'S COUNTY	173474
C20	173475	1.84	ST. JOHN'S COUNTY	173475
C21	173476	1.84	ST. JOHN'S COUNTY	173476
C22	173477	1.84	ST. JOHN'S COUNTY	173477
C23	173478	1.84	ST. JOHN'S COUNTY	173478
C24	173479	1.84	ST. JOHN'S COUNTY	173479
C25	173480	1.84	ST. JOHN'S COUNTY	173480
C26	173481	1.84	ST. JOHN'S COUNTY	173481
C27	173482	1.84	ST. JOHN'S COUNTY	173482
C28	173483	1.84	ST. JOHN'S COUNTY	173483
C29	173484	1.84	ST. JOHN'S COUNTY	173484
C30	173485	1.84	ST. JOHN'S COUNTY	173485
C31	173486	1.84	ST. JOHN'S COUNTY	173486
C32	173487	1.84	ST. JOHN'S COUNTY	173487
C33	173488	1.84	ST. JOHN'S COUNTY	173488
C34	173489	1.84	ST. JOHN'S COUNTY	173489
C35	173490	1.84	ST. JOHN'S COUNTY	173490
C36	173491	1.84	ST. JOHN'S COUNTY	173491
C37	173492	1.84	ST. JOHN'S COUNTY	173492
C38	173493	1.84	ST. JOHN'S COUNTY	173493
C39	173494	1.84	ST. JOHN'S COUNTY	173494
C40	173495	1.84	ST. JOHN'S COUNTY	173495
C41	173496	1.84	ST. JOHN'S COUNTY	173496
C42	173497	1.84	ST. JOHN'S COUNTY	173497
C43	173498	1.84	ST. JOHN'S COUNTY	173498
C44	173499	1.84	ST. JOHN'S COUNTY	173499
C45	173500	1.84	ST. JOHN'S COUNTY	173500
C46	173501	1.84	ST. JOHN'S COUNTY	173501
C47	173502	1.84	ST. JOHN'S COUNTY	173502
C48	173503	1.84	ST. JOHN'S COUNTY	173503
C49	173504	1.84	ST. JOHN'S COUNTY	173504
C50	173505	1.84	ST. JOHN'S COUNTY	173505
C51	173506	1.84	ST. JOHN'S COUNTY	173506
C52	173507	1.84	ST. JOHN'S COUNTY	173507
C53	173508	1.84	ST. JOHN'S COUNTY	173508
C54	173509	1.84	ST. JOHN'S COUNTY	173509
C55	173510	1.84	ST. JOHN'S COUNTY	173510
C56	173511	1.84	ST. JOHN'S COUNTY	173511
C57	173512	1.84	ST. JOHN'S COUNTY	173512
C58	173513	1.84	ST. JOHN'S COUNTY	173513
C59	173514	1.84	ST. JOHN'S COUNTY	173514
C60	173515	1.84	ST. JOHN'S COUNTY	173515
C61	173516	1.84	ST. JOHN'S COUNTY	173516
C62	173517	1.84	ST. JOHN'S COUNTY	173517
C63	173518	1.84	ST. JOHN'S COUNTY	173518
C64	173519	1.84	ST. JOHN'S COUNTY	173519
C65	173520	1.84	ST. JOHN'S COUNTY	173520
C66	173521	1.84	ST. JOHN'S COUNTY	173521
C67	173522	1.84	ST. JOHN'S COUNTY	173522
C68	173523	1.84	ST. JOHN'S COUNTY	173523
C69	173524	1.84	ST. JOHN'S COUNTY	173524
C70	173525	1.84	ST. JOHN'S COUNTY	173525
C71	173526	1.84	ST. JOHN'S COUNTY	173526
C72	173527	1.84	ST. JOHN'S COUNTY	173527
C73	173528	1.84	ST. JOHN'S COUNTY	173528
C74	173529	1.84	ST. JOHN'S COUNTY	173529
C75	173530	1.84	ST. JOHN'S COUNTY	173530
C76	173531	1.84	ST. JOHN'S COUNTY	173531
C77	173532	1.84	ST. JOHN'S COUNTY	173532
C78	173533	1.84	ST. JOHN'S COUNTY	173533
C79	173534	1.84	ST. JOHN'S COUNTY	173534
C80	173535	1.84	ST. JOHN'S COUNTY	173535
C81	173536	1.84	ST. JOHN'S COUNTY	173536
C82	173537	1.84	ST. JOHN'S COUNTY	173537
C83	173538	1.84	ST. JOHN'S COUNTY	173538
C84	173539	1.84	ST. JOHN'S COUNTY	173539
C85	173540	1.84	ST. JOHN'S COUNTY	173540
C86	173541	1.84	ST. JOHN'S COUNTY	173541
C87	173542	1.84	ST. JOHN'S COUNTY	173542
C88	173543	1.84	ST. JOHN'S COUNTY	173543
C89	173544	1.84	ST. JOHN'S COUNTY	173544
C90	173545	1.84	ST. JOHN'S COUNTY	173545
C91	173546	1.84	ST. JOHN'S COUNTY	173546
C92	173547	1.84	ST. JOHN'S COUNTY	173547
C93	173548	1.84	ST. JOHN'S COUNTY	173548
C94	173549	1.84	ST. JOHN'S COUNTY	173549
C95	173550	1.84	ST. JOHN'S COUNTY	173550
C96	173551	1.84	ST. JOHN'S COUNTY	173551
C97	173552	1.84	ST. JOHN'S COUNTY	173552
C98	173553	1.84	ST. JOHN'S COUNTY	173553
C99	173554	1.84	ST. JOHN'S COUNTY	173554
C100	173555	1.84	ST. JOHN'S COUNTY	173555

Prepared by:
 R-S-SCOTT & ASSOCIATES, INC. - LAND SURVEYORS
 5400 EAST OSWALD DRIVE
 ORLANDO, FLORIDA 32807
 Phone (407) 277-1212 Fax (407) 258-1416