

RESOLUTION NO. 2013- 41
RESOLUTION OF THE BOARD OF COUNTY
COMMISSIONERS OF ST. JOHNS COUNTY, FLORIDA
APPROVING A PLAT FOR MARSHALL CREEK DRI UNIT EV-7A/EV-8A.

WHEREAS, MARSHALL CREEK, LTD., A FLORIDA LIMITED PARTNERSHIP, AS OWNER, has applied to the Board of County Commissioners of St. Johns County, Florida for approval to record a plat known as **MARSHALL CREEK DRI UNIT EV-7A/EV-8A.**

NOW, THEREFORE BE IT RESOLVED BY THE BOARD OF COUNTY COMMISSIONERS OF ST. JOHNS COUNTY, FLORIDA, as follows:

Section 1. The above-described subdivision plat and its dedicated areas depicted thereon are conditionally approved and accepted by the Board of County Commissioners of St. Johns County, Florida subject to Sections 2, 3, 4, 5 and 6.

Section 2. A Required Improvements Bond for construction will not be required.

Section 3. A Required Improvements Bond for maintenance will not be required.

Section 4. The approval and acceptance described in Section 1 shall not take effect until the Clerk has received a title opinion, certificate, or policy pertaining to the real property that is the subject of the aforementioned subdivision plat which opinion, certificate or policy is in a form acceptable to the County Attorney or Assistant County Attorney.

Section 5. The Clerk is instructed to file and record the consent and joinder (s) to the plat executed by all mortgages identified in the title opinion or certificate of the title in Section 4.

Section 6. The approval and acceptance described in Section 1 shall not take effect until the plat has been signed by each of the following departments, person or offices:

- a) Chairman or Vice-Chairman of the Board of County Commissioners of St. Johns County, Florida;
- b) Office of the County Attorney;
- c) County Growth Management Department;
- d) Office of the County Surveyor; and

e) Clerk of Courts.

The Clerk shall not sign or accept the Plat for recording until it has been signed by each of the above persons or entities described in a) through d) above. If the plat is not signed and accepted by the Clerk for recording within 14 days from the date hereof, then the above-described conditional approval shall automatically terminate. If the plat is signed by the Clerk on or before such time, the conditions described herein shall be deemed to have been met.

ADOPTED by the Board of County Commissioners of St. Johns County, Florida, this 19th day of February, 2013.

**BOARD OF COUNTY COMMISSIONERS
OF ST. JOHNS COUNTY, FLORIDA**

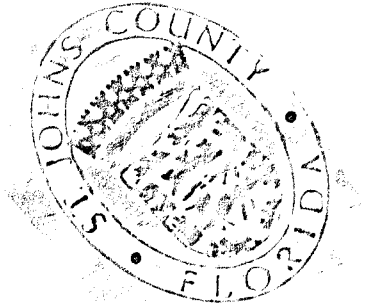
BY: _____

John H. Morris
John H. Morris, Chair

ATTEST: Cheryl Strickland

Pam Halterman

Deputy Clerk



Marshall Creek DRI Unit EV-7A/EV-8A

BEING A PORTION OF CLARA P. ARNAU GRANT, KNOWN AS SECTION 44 AND A PORTION OF THE ROOSE LEONARDY GRANT, KNOWN AS SECTION 61, ALL IN TOWNSHIP 5 SOUTH, RANGE 29 EAST, ST. JOHNS COUNTY, FLORIDA

MAP BOOK _____ PAGE _____
SHEET 2 OF 3 SHEETS

41/2

THE INTENDED USE OF THESE COORDINATES IS FOR ST. JOHNS COUNTY GIS BASE MAPPING PURPOSES ONLY. AND NOT FOR PUBLISHED DATA FOR THE FOLLOWING NATIONAL GEODETIC CONTROL: (GARRIN 2, NATIONAL GEODETIC SURVEY # B0588) (STAMPORT - NATIONAL GEODETIC SURVEY # A28282)

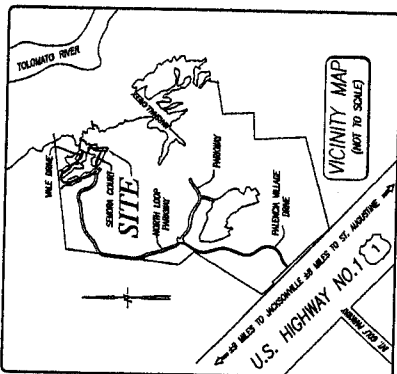
COORDINATES ARE BASED ON NORTH AMERICAN DATUM 1983/80 - STATE PLANE COORDINATES - FLORIDA EAST ZONE - U.S. FEET

POINT	EASTING	NORTHING	DESCRIPTION
1	307348.6200	327600.1700	MOST W. CORNER OF LOT 29
2	307348.6200	327600.1700	MOST N. CORNER OF LOT 29

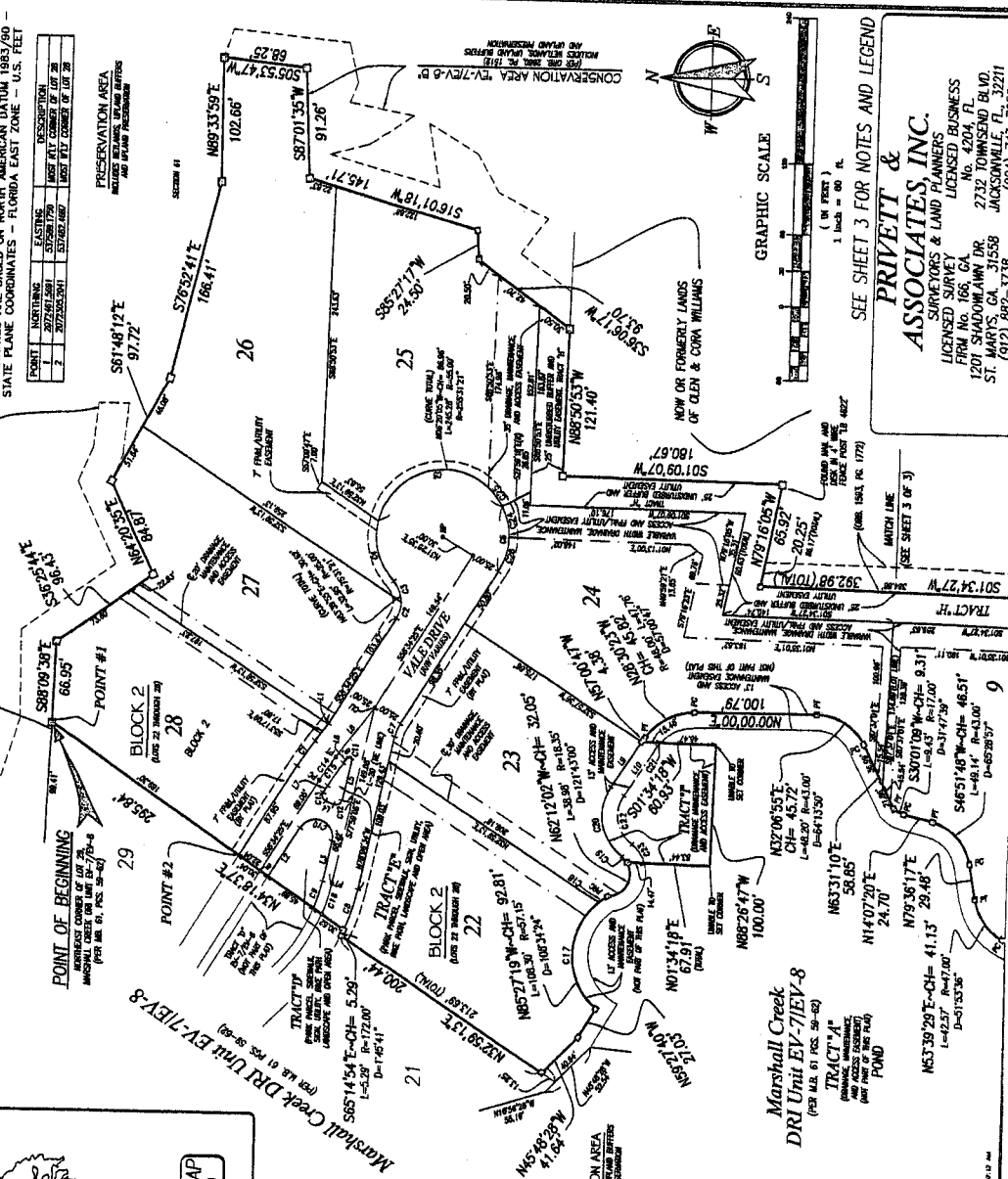
PRESERVATION AREA
MAYNARD BARN AND ADJACENT AREAS

(SEE SHEET 3 OF 3 FOR GENERAL NOTES AND LEGEND)

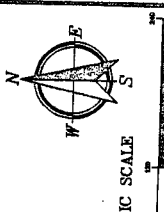
CONSERVATION AREA TV-7/EV-9A
MAYNARD BARN AND ADJACENT AREAS



TRACT	ACRES	OWNER
11	4.00	STATE
12	1.00	STATE
13	1.00	STATE
14	1.00	STATE
15	1.00	STATE
16	1.00	STATE
17	1.00	STATE
18	1.00	STATE
19	1.00	STATE
20	1.00	STATE



TRACT	ACRES	OWNER
11	4.00	STATE
12	1.00	STATE
13	1.00	STATE
14	1.00	STATE
15	1.00	STATE
16	1.00	STATE
17	1.00	STATE
18	1.00	STATE
19	1.00	STATE
20	1.00	STATE
21	1.00	STATE
22	1.00	STATE
23	1.00	STATE
24	1.00	STATE
25	1.00	STATE
26	1.00	STATE
27	1.00	STATE
28	1.00	STATE
29	1.00	STATE



SEE SHEET 3 FOR NOTES AND LEGEND

PRIVETT & ASSOCIATES, INC.
SURVEYORS & LAND PLANNERS
LICENSED SURVEY LICENSED BUSINESS
1201 S. GARDNER BLVD., #4204, FL.
JACKSONVILLE, FL. 32211
(904) 743-7638