

RESOLUTION NO. 2014- 160
RESOLUTION OF THE BOARD OF COUNTY
COMMISSIONERS OF ST. JOHNS COUNTY, FLORIDA
APPROVING A PLAT FOR LAS CALINAS PARCEL 3A UNIT 2 PHASE 4

WHEREAS, TAYLOR MORRISON OF FLORIDA INC, A FLORIDA CORPORATION, AS OWNER, has applied to the Board of County Commissioners of St. Johns County, Florida for approval to record a plat known as **Las Calinas Parcel 3A Unit 2 Phase 4.**

NOW, THEREFORE BE IT RESOLVED BY THE BOARD OF COUNTY COMMISSIONERS OF ST. JOHNS COUNTY, FLORIDA, as follows:

Section 1. The above-described subdivision plat and its dedicated areas depicted thereon are conditionally approved and accepted by the Board of County Commissioners of St. Johns County, Florida subject to Sections 2, 3, 4, 5 and 6.

Section 2. A Required Improvements Bond in the amount of \$212,860.93 has been filed with the Clerks office.

Section 3. A Required Improvements Bond in the amount of \$30,149.95 will be required for maintenance.

Section 4. The approval and acceptance described in Section 1 shall not take effect until the Clerk has received a title opinion, certificate, or policy pertaining to the real property that is the subject of the aforementioned subdivision plat which opinion, certificate or policy is in a form acceptable to the County Attorney or Assistant County Attorney.

Section 5. The Clerk is instructed to file and record the consent and joinder (s) to the plat executed by all mortgages identified in the title opinion or certificate of the title in Section 4.

Section 6. The approval and acceptance described in Section 1 shall not take effect until the plat has been signed by each of the following departments, person or offices:

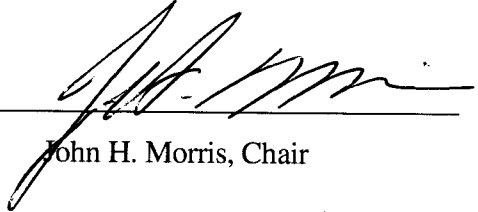
- a) Chairman or Vice-Chairman of the Board of County Commissioners of St. Johns County, Florida;
- b) Office of the County Attorney;
- c) County Growth Management Department;
- d) Office of the County Surveyor; and
- e) Clerk of Courts.

The Clerk shall not sign or accept the Plat for recording until it has been signed by each of the above persons or entities described in a) through d) above. If the plat is not signed and accepted by the Clerk for recording within 14 days from the date hereof, then the above-described conditional approval shall automatically terminate. If the plat is signed by the Clerk on or before such time, the conditions described herein shall be deemed to have been met.

ADOPTED by the Board of County Commissioners of St. Johns County, Florida, this 17th day of June, 2014.

**BOARD OF COUNTY COMMISSIONERS
OF ST. JOHNS COUNTY, FLORIDA**

BY: _____


John H. Morris, Chair

RENDITION DATE 6/19/2014

ATTEST: Cheryl Strickland



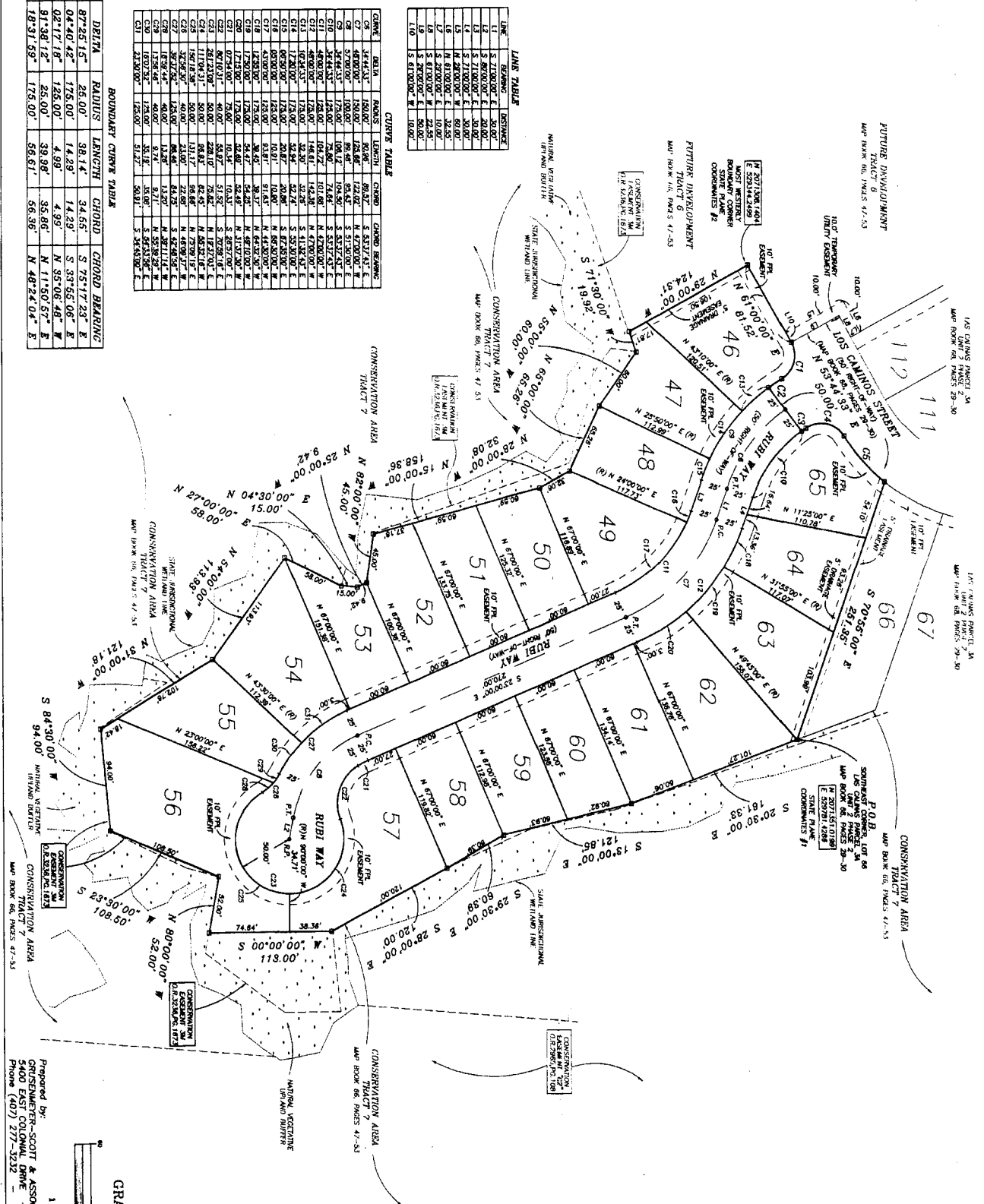
Deputy Clerk

LAS CALINAS PARCEL 3A UNIT 2 PHASE 4

SHEET 2 OF 2 SHEETS

MAP BOOK _____ PAGE _____

A PARCEL OF LAND BEING A PART OF A PORTION OF TRACT 6, LAS CALINAS PARCEL 3A, UNIT 2, PHASE 1, AS RECORDED IN MAP BOOK 66, PAGES 47 THROUGH 53, PUBLIC RECORDS OF ST. JOHNS COUNTY, FLORIDA, LYING WITHIN A PORTION OF SECTION 32, TOWNSHIP 5 SOUTH, RANGE 29 EAST, ST. JOHNS COUNTY, FLORIDA.



LINE TABLE

LINE	BEARING	DISTANCE
L1	S 71°00'00" E	20.00'
L2	S 80°00'00" E	20.00'
L3	S 71°00'00" E	20.00'
L4	S 71°00'00" E	20.00'
L5	N 28°00'00" W	60.00'
L6	N 81°00'00" E	32.85'
L7	S 28°00'00" E	10.00'
L8	S 28°00'00" E	80.00'
L9	S 81°00'00" W	10.00'
L10	S 81°00'00" W	10.00'

CURVE TABLE

CURVE	DELTA	RADIUS	LENGTH	CHORD	CHORD BEARING
C1	87°25'15"	25.00'	39.14'	34.65'	S 75°17'23" E
C2	04°40'42"	175.00'	14.29'	14.29'	N 33°55'08" E
C3	02°17'18"	128.00'	4.99'	4.99'	N 35°02'48" W
C4	91°38'12"	25.00'	39.98'	35.86'	N 11°50'57" E
C5	18°31'59"	175.00'	56.61'	56.36'	N 48°24'04" E

BOUNDARY CURVE TABLE

BOUNDARY CURVE TABLE

CURVE	DELTA	RADIUS	LENGTH	CHORD	CHORD BEARING
C1	87°25'15"	25.00'	39.14'	34.65'	S 75°17'23" E
C2	04°40'42"	175.00'	14.29'	14.29'	N 33°55'08" E
C3	02°17'18"	128.00'	4.99'	4.99'	N 35°02'48" W
C4	91°38'12"	25.00'	39.98'	35.86'	N 11°50'57" E
C5	18°31'59"	175.00'	56.61'	56.36'	N 48°24'04" E



Prepared by:
GROSEWATER-SCOTT & ASSOCIATES, INC. - LAND SURVEYORS
ORLANDO, FLORIDA 32807
Phone (407) 277-3232 Fax (407) 658-1436