

RESOLUTION NO. 2014- 261
RESOLUTION OF THE BOARD OF COUNTY COMMISSIONERS
OF ST. JOHNS COUNTY, FLORIDA APPROVING A
PLAT FOR OAKRIDGE UNIT THREE

WHEREAS, TOWER TIMBER COMPANY, LLC., AS OWNER has applied to the Board of County Commissioners of St. Johns County, Florida for approval to record a plat known as Oakridge Unit Three.

NOW, THEREFORE BE IT RESOLVED BY THE BOARD OF COUNTY COMMISSIONERS OF ST. JOHNS COUNTY, FLORIDA, as follows:

Section 1. The above-described subdivision plat and its dedicated areas depicted thereon are conditionally approved and accepted by the Board of County Commissioners of St. Johns County, Florida subject to Sections 2, 3, 4, 5 and 6.

Section 2. A Required Improvements Bond in the amount of \$96,951.79 has been filed with the Clerks office.

Section 3. A Required Improvements Bond in the amount of \$33,291.00 will be required for maintenance.

Section 4. The approval and acceptance described in Section 1 shall not take effect until the Clerk has received a title opinion, certificate, or policy pertaining to the real property that is the subject of the aforementioned subdivision plat which opinion, certificate or policy is in a form acceptable to the County Attorney or Assistant County Attorney.

Section 5. The Clerk is instructed to file and record the consent and joinder (s) to the plat executed by all mortgages identified in the title opinion or certificate of the title in Section 4.

Section 6. The approval and acceptance described in Section 1 shall not take effect until the plat has been signed by each of the following departments, person or offices:

- a) Chairman or Vice-Chairman of the Board of County Commissioners of St. Johns County, Florida;
- b) Office of the County Attorney;
- c) County Growth Management Department;
- d) Office of the County Surveyor; and
- e) Clerk of Courts.

The Clerk shall not sign or accept the Plat for recording until it has been signed by each of the above persons or entities described in a) through d) above. If the plat is not signed and accepted by the Clerk for recording within 14 days from the date hereof, then the above-described conditional approval shall automatically terminate. If the plat is signed by the Clerk on or before such time, the conditions described herein shall be deemed to have been met.

ADOPTED by the Board of County Commissioners of St. Johns County, Florida, this 7th day of October, 2014.

**BOARD OF COUNTY COMMISSIONERS
OF ST. JOHNS COUNTY, FLORIDA**

BY: _____

John H. Morris
John H. Morris, Chair

ATTEST: Cheryl Strickland

Pam Halterman

Deputy Clerk

RENDITION DATE 10/10/14

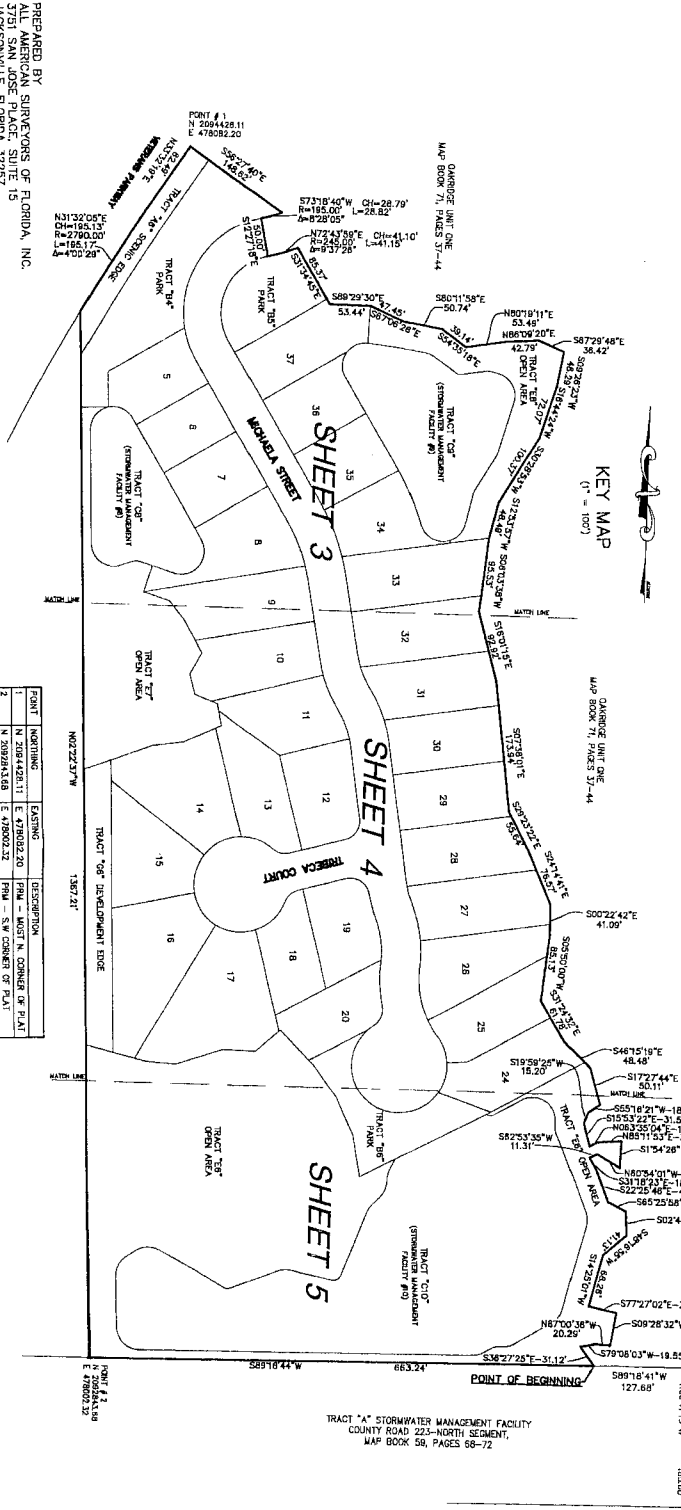
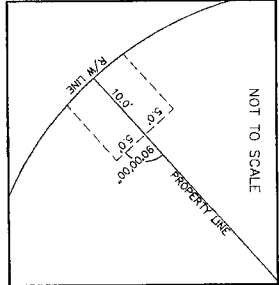
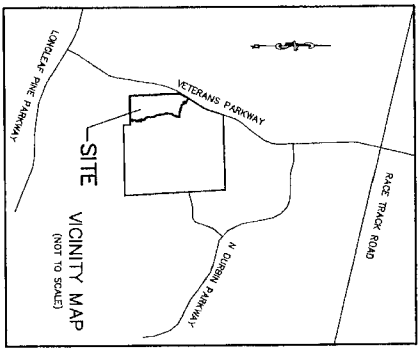


Attachment 2

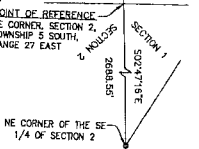
Plat Map

OAKRIDGE ~ UNIT THREE

A PARCEL OF LAND LYING IN AND BEING PART OF THE SOUTHEAST QUARTER OF SECTION 2, TOWNSHIP 5 SOUTH, RANGE 27 EAST, ST. JOHNS COUNTY, FLORIDA.



| POINT | NORTHING | EASTING | DESCRIPTION |
|-------|--------------|--------------|------------------------------|
| 1 | N 2094488.11 | E 4780822.20 | PNM - MOST N. CORNER OF PLAT |
| 2 | N 2092418.08 | E 4780822.20 | PNM - SW CORNER OF PLAT |



- NOTES:
1. BEARINGS SHOWN HEREON ARE REFERRED TO THE STATE PLANE COORDINATES AS INDICATED HEREON AND ARE BASED ON THE WESTERN LINE OF SECTION 1 AS BEING SOUTH 02°45'32" EAST.
 2. THE WESTERN LINE OF SECTION 1 HAS BEEN SOUTH 02°45'32" EAST.
 3. THE EASTERN LINE OF SECTION 1 HAS BEEN SOUTH 89°14'28" WEST.
 4. THE NORTHERN LINE OF SECTION 1 HAS BEEN NORTH 89°14'28" WEST.
 5. THE SOUTHERN LINE OF SECTION 1 HAS BEEN NORTH 02°45'32" EAST.
 6. THE WESTERN LINE OF SECTION 2 HAS BEEN SOUTH 89°14'28" WEST.
 7. THE EASTERN LINE OF SECTION 2 HAS BEEN SOUTH 02°45'32" EAST.
 8. THE NORTHERN LINE OF SECTION 2 HAS BEEN NORTH 89°14'28" WEST.
 9. THE SOUTHERN LINE OF SECTION 2 HAS BEEN NORTH 02°45'32" EAST.

MAP BOOK _____ PAGE _____
SHEET 2 OF 5 SHEETS

2-1