

RESOLUTION NO. 2014-309
RESOLUTION OF THE BOARD OF COUNTY COMMISSIONERS
OF ST. JOHNS COUNTY, FLORIDA APPROVING A
PLAT FOR SAMARA LAKES PARCEL C PHASE 3

WHEREAS, D.R. HORTON, INC.- JACKSONVILLE, A DELAWARE COMPANY, AS OWNER has applied to the Board of County Commissioners of St. Johns County, Florida for approval to record a plat known as Samara Lakes Parcel C Phase 3.

NOW, THEREFORE BE IT RESOLVED BY THE BOARD OF COUNTY COMMISSIONERS OF ST. JOHNS COUNTY, FLORIDA, as follows:

Section 1. The above-described subdivision plat and its dedicated areas depicted thereon are conditionally approved and accepted by the Board of County Commissioners of St. Johns County, Florida subject to Sections 2, 3, 4, 5 and 6.

Section 2. A Required Improvements Bond in the amount of \$266,185.55 has been filed with the Clerks office.

Section 3. A Required Improvements Bond in the amount of \$78,486.00 will be required for maintenance.

Section 4. The approval and acceptance described in Section 1 shall not take effect until the Clerk has received a title opinion, certificate, or policy pertaining to the real property that is the subject of the aforementioned subdivision plat which opinion, certificate or policy is in a form acceptable to the County Attorney or Assistant County Attorney.

Section 5. The Clerk is instructed to file and record the consent and joinder (s) to the plat executed by all mortgages identified in the title opinion or certificate of the title in Section 4.

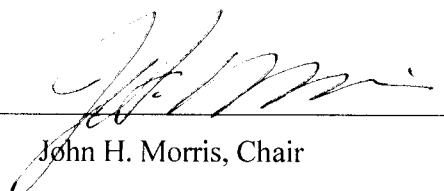
Section 6. The approval and acceptance described in Section 1 shall not take effect until the plat has been signed by each of the following departments, person or offices:

- a) Chairman or Vice-Chairman of the Board of County Commissioners of St. Johns County, Florida;
- b) Office of the County Attorney;
- c) County Growth Management Department;
- d) Office of the County Surveyor; and
- e) Clerk of Courts.

The Clerk shall not sign or accept the Plat for recording until it has been signed by each of the above persons or entities described in a) through d) above. If the plat is not signed and accepted by the Clerk for recording within 14 days from the date hereof, then the above-described conditional approval shall automatically terminate. If the plat is signed by the Clerk on or before such time, the conditions described herein shall be deemed to have been met.

ADOPTED by the Board of County Commissioners of St. Johns County, Florida, this 4 day of November, 2014.

**BOARD OF COUNTY COMMISSIONERS
OF ST. JOHNS COUNTY, FLORIDA**

BY: 
John H. Morris, Chair

ATTEST: Cheryl Strickland



Deputy Clerk

RENDITION DATE 11/6/14

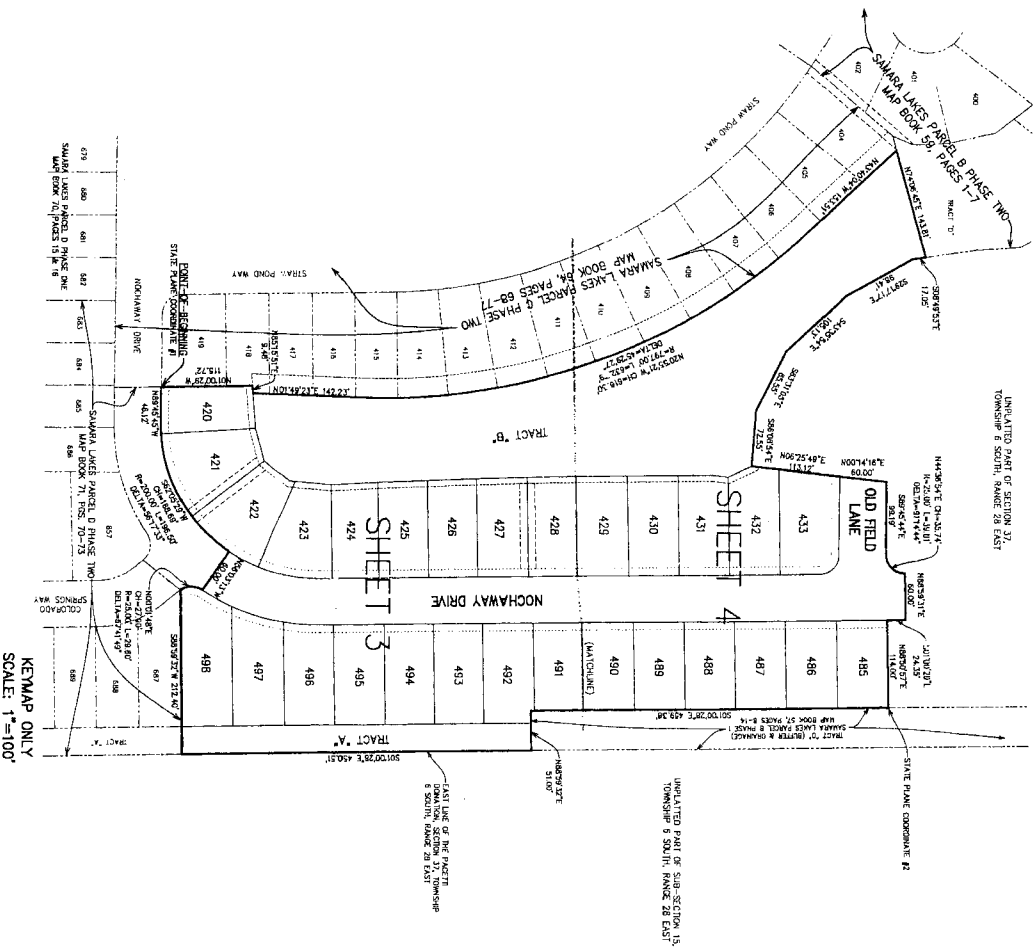


SAMARA LAKES PARCEL C PHASE THREE

A PART OF THE PACETTI DONATION, SECTION 37, TOWNSHIP 6 SOUTH, RANGE 28 EAST, ST. JOHNS COUNTY, FLORIDA

MAP BOOK PAGE

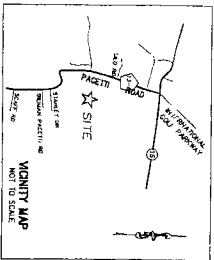
SHEET 2 of 4



NOTICE: THIS PLAN, AS RECORDED IN ITS GRAPHIC FORM, IS THE OFFICIAL DESCRIPTION OF THE SUBDIVIDED LANDS DESCRIBED HEREIN AND WILL IN NO CIRCUMSTANCES BE SUPERSEDED OR MODIFIED BY ANY OTHER GRAPHIC OR DIGITAL FORM OF THIS PLAN. THERE MAY BE ADDITIONAL RESTRICTIONS THAT ARE NOT RECORDED ON THIS PLAN THAT MAY BE FOUND IN THE PUBLIC RECORDS OF THIS COUNTY, BY SECTION 177.091 (77), FLORIDA STATUTES.

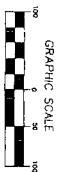
NOTES:

1. BEARING REFERENCE: SEE PAGE 457E FOR SOUTHERLY P.M. LINE OF NOCHOYWAY DRIVE PER PLAN OF SAMARA LAKES PARCEL C PHASE TWO, MAP BOOK 64, PAGES 68-77.
2. STATE PLANE COORDINATES SHOWN WITH VALUES IN FEET DERIVED THEREBY BASED ON NORTH AMERICAN DATUM 1983. ELEVATION COORDINATES SHOWN WITH VALUES SHOWN ON ST. JOHNS COUNTY GEODETIC CONTROL POINTS LISTED IN THE APPENDIX. THE COORDINATES OF THIS PLAN ARE BASED ON THE NAD 83 DATUM. THE HORIZONTAL COORDINATES OF THESE COORDINATES IS FOR CDS BASED MEASURING PURPOSES.
3. TOTAL LOTS = 28



LEGEND:	
□	STATE PLANE COORDINATE FRAMEWORK
■	SECTION CORNER
●	ADJACENT PROPERTY (AS SHOWN)
○	ADJACENT PROPERTY (AS SHOWN)
○	ADJACENT PROPERTY (AS SHOWN)
○	ADJACENT PROPERTY (AS SHOWN)
○	ADJACENT PROPERTY (AS SHOWN)
○	ADJACENT PROPERTY (AS SHOWN)
○	ADJACENT PROPERTY (AS SHOWN)
○	ADJACENT PROPERTY (AS SHOWN)
○	ADJACENT PROPERTY (AS SHOWN)
○	ADJACENT PROPERTY (AS SHOWN)
○	ADJACENT PROPERTY (AS SHOWN)

STATE PLANE COORDINATES TABLE			
POINT	NORTHING	EASTING	HEIGHT OF ELEVATION
1	520418.743	52041.383	HEIGHT OF ELEVATION
2	520418.743	52041.383	HEIGHT OF ELEVATION



KEYMAP ONLY
SCALE: 1"=100'