

RESOLUTION NO. 2014 - 335

A RESOLUTION BY THE BOARD OF COUNTY COMMISSIONERS OF ST. JOHNS COUNTY, FLORIDA, AUTHORIZING THE COUNTY ADMINISTRATOR, OR DESIGNEE, TO PURCHASE AND TO EXECUTE A PURCHASE ORDER FOR TWO NEW 2015 BRAUN AMBULANCE

RECITALS

WHEREAS, the County desires to enter into a contract with Ten-8 Fire Equipment Inc to purchase Two 2015 Braun Ambulances; and

WHEREAS, the scope of the project shall consist of the purchase of two Ambulances; and

WHEREAS, through the County's piggybacking off the Florida Sheriff's Association, Florida Association of Counties & Florida Fire Chief's Association contract #11-10-1202, Ten-8 Fire Equipment Inc selected as the most qualified respondent to enter into a contract with the County to perform the work referenced above; and

WHEREAS, the project is being funded by the EMS Department and Fire impact Fees; and

WHEREAS, the County has reviewed the terms, provisions, conditions and requirements of the Contract (attached hereto, an incorporated herein) and finds that entering into the Contract serves a public purpose.

NOW, THEREFORE BE IT RESOLVED BY THE BOARD OF COUNTY COMMISSIONERS OF ST. JOHNS COUNTY, FLORIDA, as follows:

Section 1. The above Recitals are incorporated by reference into the body of this Resolution and such Recitals are adopted as finds of fact.

Section 2. The County Administrator, or designee, is hereby authorized to purchase Two (2) New Braun Ambulances from Ten-8 Fire Equipment Inc.

Section 3. The County Administrator, or designee, is further authorized to execute A Purchase Order with Ten-8 Fire Equipment Inc on behalf of the County for the purchase of Two (2) New Braun Ambulances as specifically provided in Florida Sheriff's Association, Florida Association of Counties & Florida Fire Chief's Association contract #11-10-1202.

Section 4. To the extent that there are typographical and/or administrative errors that do not change the tone, tenor, or concept of this Resolution, then this Resolution may be revised without subsequent approval by the Board of County Commissioners.

PASSED AND ADOPTED by the Board of County Commissioners of St. Johns County, Florida, this 11th day of November, 2014.

**BOARD OF COUNTY COMMISSIONERS
OF ST. JOHNS COUNTY, FLORIDA**

By: _____

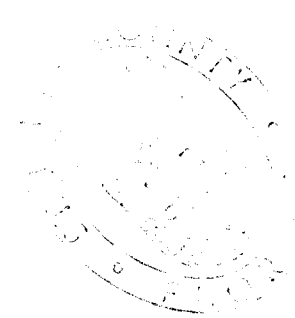
Chair

ATTEST: Cheryl Strickland, Clerk

By: _____

Deputy Clerk

RENDITION DATE 11/21/14



MEMO



FLORIDA SHERIFFS ASSOCIATION

P. O. Box 12519 • Tallahassee, FL 32317-2519

PHONE (850) 877-2165 • FAX (850) 878-8665

WEB SITE: www.flsheriffs.org

DATE: January 3, 2014

TO: **PROSPECTIVE PURCHASING AGENCIES**

FROM: Lynn Meek Peggy Goff Drew Terpak
Contract Coordinator Contract Manager Contract Specialist

RE: **Additional Extension of Bid 11-10-1202**
Fire Rescue Vehicles & Other Fleet Equipment
(Extended from January 1, 2014 - December 31, 2014)

The Florida Sheriffs Association will extend Bid 11-10-1202 through December 31, 2014. All terms and conditions will remain the same with the exception of the date.

The Florida Sheriffs Association has agreed for manufacturers to cover any additional cost in the base model not to exceed three percent (3%) or a maximum aggregate of a six percent (6%) overall cost increase over the original base contract price and all options offered through Bid 11-10-1202, as allowed in Part B, item thirteen (13). This bid was originally effective from January 1, 2012 thru December 31, 2012, but was extended from January 1, 2013 thru December 31, 2013. Manufacturers also agreed to extend once again from January 1, 2014 thru December 31, 2014.

Purchase orders should start at the base price for the vehicle being purchased and show the allowed increase. The end user should request documentation from the manufacturers in order to substantiate the increase.

We appreciate your loyalty and continued support.

BID AWARD ANNOUNCEMENT

11-10-1202

Original Effective Dates:

January 1, 2012 – December 31, 2012

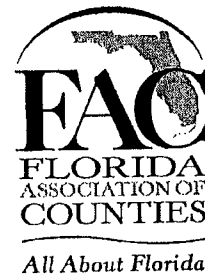
1st Extension: January 1, 2013 – December 31, 2013

2nd Extension: January 2, 2014 – December 31, 2014

**FIRE RESCUE VEHICLES
& OTHER FLEET EQUIPMENT**
*Participating Law Enforcement, Fire/Rescue
& Local Governmental
Agencies of the State of Florida*

Coordinated By

**The
Florida Fire Chiefs' Association,
Florida Sheriffs Association &
Florida Association of Counties**





**FLORIDA FIRE CHIEFS' ASSOCIATION,
FLORIDA SHERIFFS ASSOCIATION
& FLORIDA ASSOCIATION OF COUNTIES**

Base Specifications

SPECIFICATION #01 – TYPE I AMBULANCE

2 WHEEL DRIVE

(DUAL REAR WHEEL, CAB & CHASSIS)

ALL ITEMS FACTORY INSTALLED UNLESS OTHERWISE INDICATED

FORD, GENERAL MOTORS, DODGE OR APPROVED EQUIVALENT

1. ENGINE

- a. Turbo diesel engine, minimum 5.9L displacement.
- b. Must include the chassis manufacturer's "AMBULANCE PREP PACKAGE".
- c. Heavy-duty alternator, minimum 200 amp.
- d. Maintenance free heavy-duty batteries, 750 CCA minimum.
- e. Manufacturer's heavy-duty engine cooling.

2. TRANSMISSION

- a. Automatic transmission, 4 speed minimum with overdrive.
- b. Manufacturer's heavy-duty cooling.

3. AXLES

- a. Manufacturer's standard drive axle ratio for ambulance prep.

4. PERFORMANCE ITEMS

- a. Power steering
- b. Anti-lock brakes
- c. Power brakes, disc type front, disc or drum rear.
- d. Fuel capacity, 250 miles minimum without refueling
- e. Heavy-duty front and rear shocks.
- f. Front stabilizer bar.

5. COMFORT ITEMS

- a. Factory installed air conditioning
- b. Tinted glass (factory tint)
- c. Minimum seating for two
- d. Rubber floor mat instead of carpeting
- e. AM/FM radio
- f. Power door locks
- g. Power windows
- h. Speed control and tilt wheel.

6. SAFETY ITEMS

- a. Driver and passenger lap and shoulder belt with retractor.
- b. Driver and passenger air bags
- c. Dual electric horns
- d. Outside mirrors to provide vision for vehicles 96" wide.
- e. Two speed wipers with intermittent.
- f. Interior dome lights wired to right and left doors.

7. TIRES AND WHEELS

- a. BSW, all season tread radial 16 inch tires.
- b. Conventional spare tire and wheel
- c. Jack and wheel wrench

8. CHASSIS, FRAME, CAB

- a. Minimum GVWR 11,400 lbs.
- b. Cab and chassis only
- c. Cab to center of axle 84 inches

9. MODULAR BODY CONSTRUCTION

- a. The ambulance body and patient compartment shall be sufficient in size to meet the requirements of this specification and those of paragraph 3.10.1 of the current KKK-A-1822F.



September 15, 2014

Assistant Chief Jeff Prevatt
St. John's County Fire Service
3657 Gaines Road
St. Augustine, FL 32084

RE: (2) Two Braun 2015 Chief XL ambulances w/ Dodge 4500 Chassis

Chief Prevatt,

Thank you for your support of Ten-8 Fire Equipment and Braun Industries for the purchase of (2) two additional rescue/ambulances. We are pleased to offer the following proposal for your review and consideration.

PROPOSAL

(2) Two 2015 Braun Chief XL Type I Rescue/Ambulances on a 2015 Dodge 4500 Chassis per your current design.

\$170,236.00	Base Price
\$23,659.00	Loose Equipment (TIC, Stretcher, Truck Kit)
\$1,186.00	FSA fee (Florida Sheriff's Association Bid)
<u>\$34,409.00</u>	Ambulance Options
Total	\$229,490.00

Unit Price: \$ 229,490.00 Total: \$ 229,490.00 x 2 = \$ 458,980.00

VEHICLE COMPLETION: 150 days from receipt of chassis

Terms: US Currency **Due:** Upon Delivery **FOB:** St. Augustine, Florida

We appreciate the opportunity to serve you again by providing (2) two new Braun rescue/ambulances. Should you have any additional questions, comments or requests please feel free to contact me. We look forward to working with you again.

Sincerely,

Wayne Stowell

Wayne Stowell
727-746-7442



St. John's County Fire Rescue
Options List for (2) New Ambulance
Per FSA Bid #11-10-1202
Specifications #01-Type I Ambulance Ram 4500

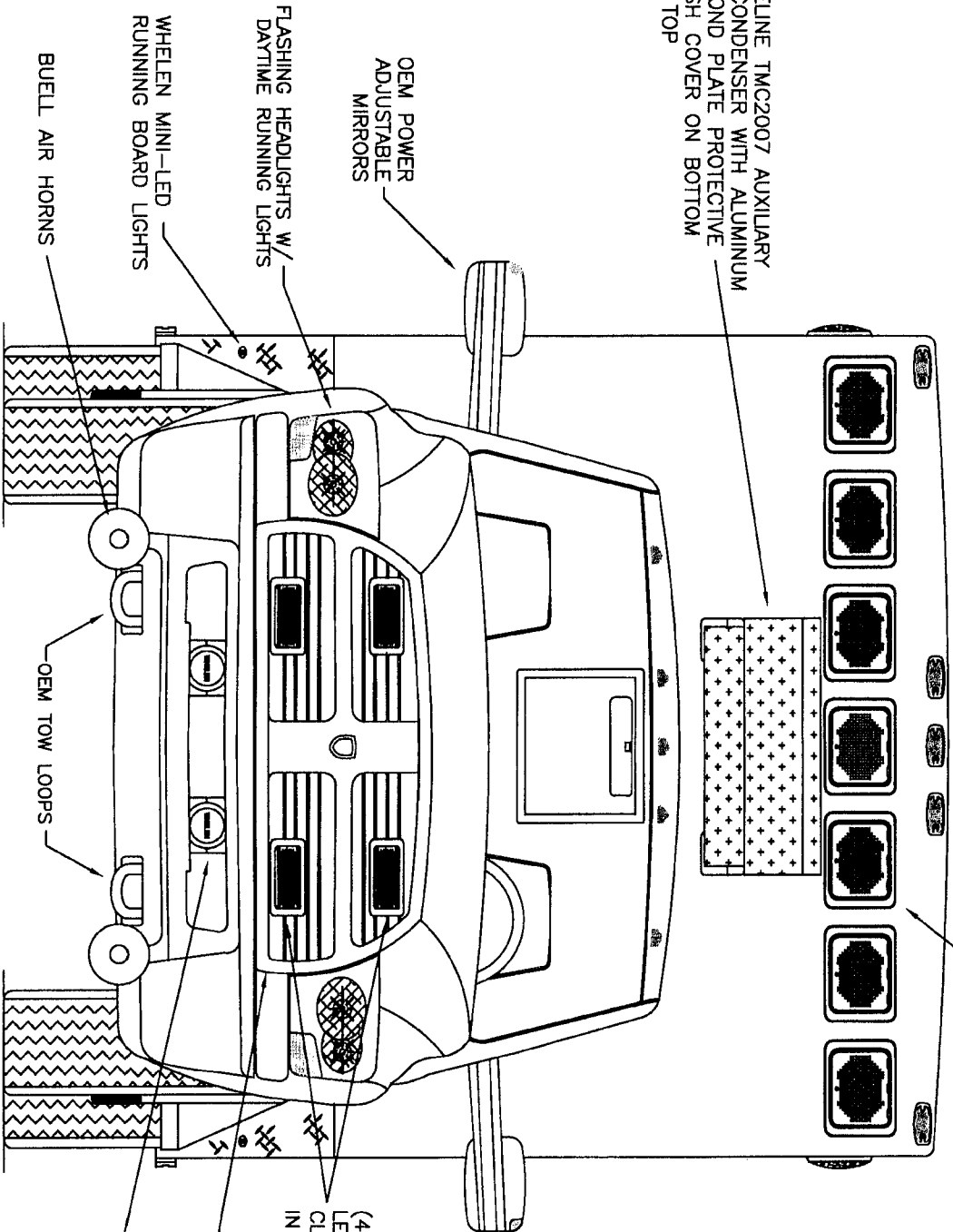
1. Custom Map Console	\$789.00
2. Map Light	\$105.00
3. 3 Batteries with slide out tray	\$350.00
4. 12v Buss bars	\$350.00
5. Shoreline Twistlock ILO	\$125.00
6. Additional Shoreline	\$305.00
7. Upgrade to LED emergency lighting	\$1345.00
8. Clock	\$175.00
9. Rear window sliding	\$75.00
10. Compartment rope lighting	\$550.00
11. Transverse compartments for backboard storage	\$870.00
12. O2 slide out tray	\$1593.00
13. Additional compt. dividers	\$325.00
14. Vanner inverter	\$1508.00
15. Camera system	\$755.00
16. Interior LED lights	\$985.00
17. Pull out trays	\$325.00
18. Additional exterior trays	\$1855.00
19. SCBA mounting plates	\$600.00
20. Power door locks	\$2100.00
21. Norcold refrigerator	\$1762.00
22. Hoseline upgrade AC/Heat system	\$7413.00
23. LP bracket	\$ 230.00
24. External condenser with brush guard	\$1300.00
25. EVS child safety seat	\$500.00
26. Medivault cabinet	\$1379.00
27. Custom paint striping	\$1300.00
28. Graphics	\$1935.50
29. FSA price increase per bid extension	\$3505.00
30. Loose equipment (stretcher , TIC)	\$23,659.00
31. Base ambulance	\$170,236.00
32. FSA fee	\$1186.00

Grand Total \$229,490.00

DIMENSIONS FOR OVERALL HEIGHT AND LENGTH ARE APPROXIMATE
 OVERALL HEIGHT = 110"
 OVERALL WIDTH WITH RUB
 RAILS & FENDERLETTS = 98"

HOSELINE TMC2007 AUXILIARY
 AC CONDENSER WITH ALUMINUM
 DIAMOND PLATE PROTECTIVE
 BRUSH COVER ON BOTTOM
 AND TOP

(7) WHELEN 900 SUPER LED WARNING LIGHTS
 RED/RED/RED/WHITE/RED/RED/RED
 WITH CLEAR LENSES



(4) WHELEN 700 RED SUPER
 LED GRILLE LIGHTS WITH
 CLEAR LENSES TO FLASH
 IN "X" PATTERN

THIS DRAWING IS FOR REPRESENTATIONAL PURPOSES ONLY. DETAILS ARE CONCEPTUAL AND ARE SUBJECT TO CHANGE DURING DESIGN AND CONSTRUCTION
 DIMENSIONS ARE APPROXIMATE UNLESS NOTED OTHERWISE TO MEET A SPECIFIC CUSTOMER NEED.

ST. JOHN'S COUNTY



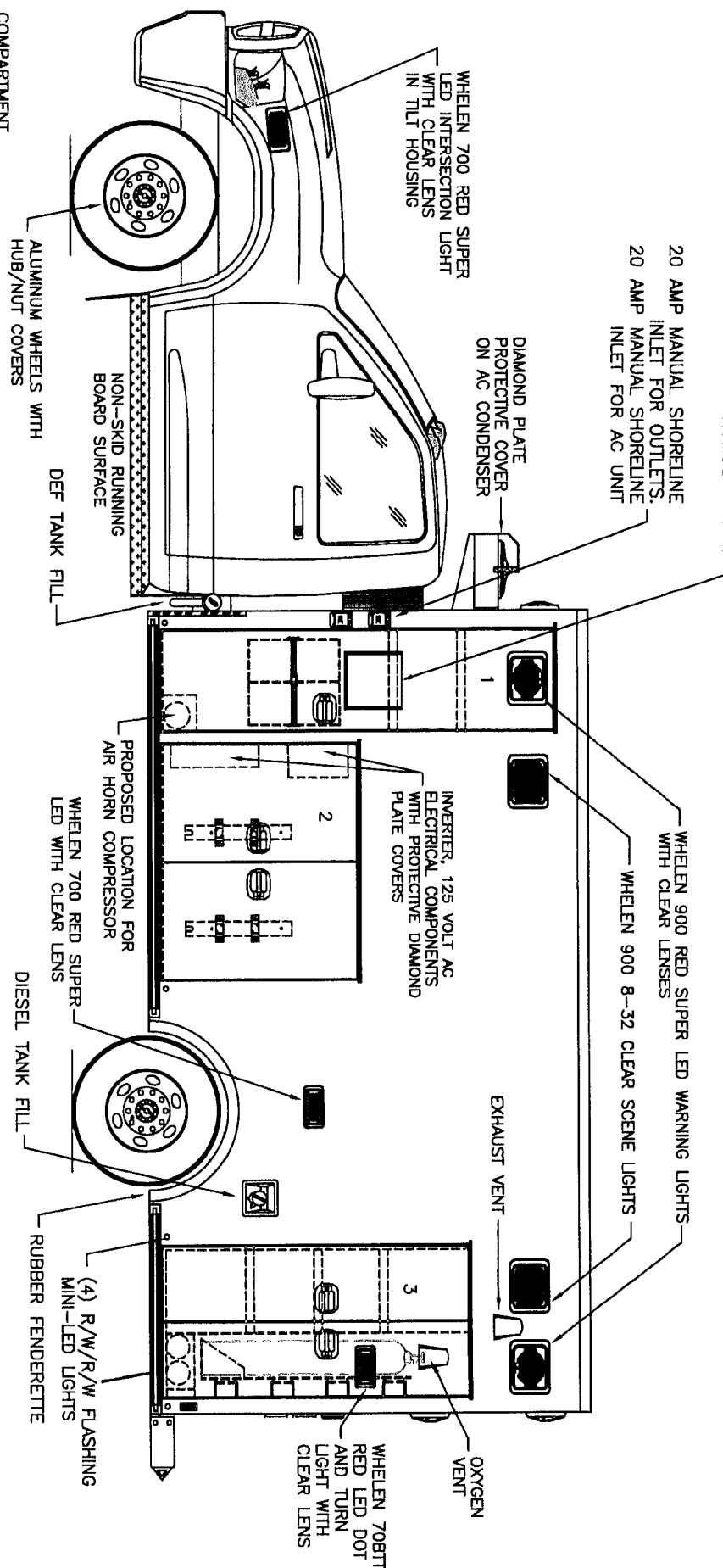
2014 FRONT EXTERIOR VIEW
 CHIEF XL-1/RAM 4500 CHASSIS

1:17

DATE: 18 AUG 14
 DWG. REV. GLE NR

DRAWING NO. ST JOHNS-1

DIMENSIONS FOR OVERALL HEIGHT AND LENGTH ARE APPROXIMATE
 OVERALL HEIGHT = 110"
 OVERALL LENGTH = 306.5"
 MODULE LENGTH = 169"



COMPARTMENT
 O.S.S #1
 CLEAR OPENING: 81.75h x 17.75w
 INSIDE DIM'S.: 82.75h x 22.25w x 20.75d
 17.5" WIDE x 19" TALL TRANSVERSE BACKBOARD STORAGE WITH (1) CENTER VERTICAL DIVIDER
 BACKBOARD OPENING TO HAVE NYLON STRAP TWO (2) ADJUSTABLE SHELVES ABOVE BACKBOARDS

O.S.S #2
 CLEAR OPENING: 40.25h x 45.75w
 INSIDE DIM'S.: 43.75h x 50.00w x 20.75d
 (2) SCBA BRACKETS ON REINFORCED BACK WALL OF COMPARTMENT

O.S.S #3
 CLEAR OPENING: 63.50h x 28.25w
 INSIDE DIM'S.: 65.25h x 31.25w x 20.75d
 DUAL "M" TANKS ON SLIDE-OUT BOARD WITH ZICO QR-MV BRACKETS
 VERTICAL DIVIDER NEXT TO OXYGEN SLIDE-OUT STORAGE FOR (2) "D" OXYGEN BOTTLES BELOW SLIDE-OUT OXYGEN

THIS DRAWING IS FOR REPRESENTATIONAL PURPOSES ONLY. DETAILS ARE CONCEPTUAL AND ARE SUBJECT TO CHANGE DURING DESIGN AND CONSTRUCTION
 DIMENSIONS ARE APPROXIMATE UNLESS NOTED OTHERWISE TO MEET A SPECIFIC CUSTOMER NEED.

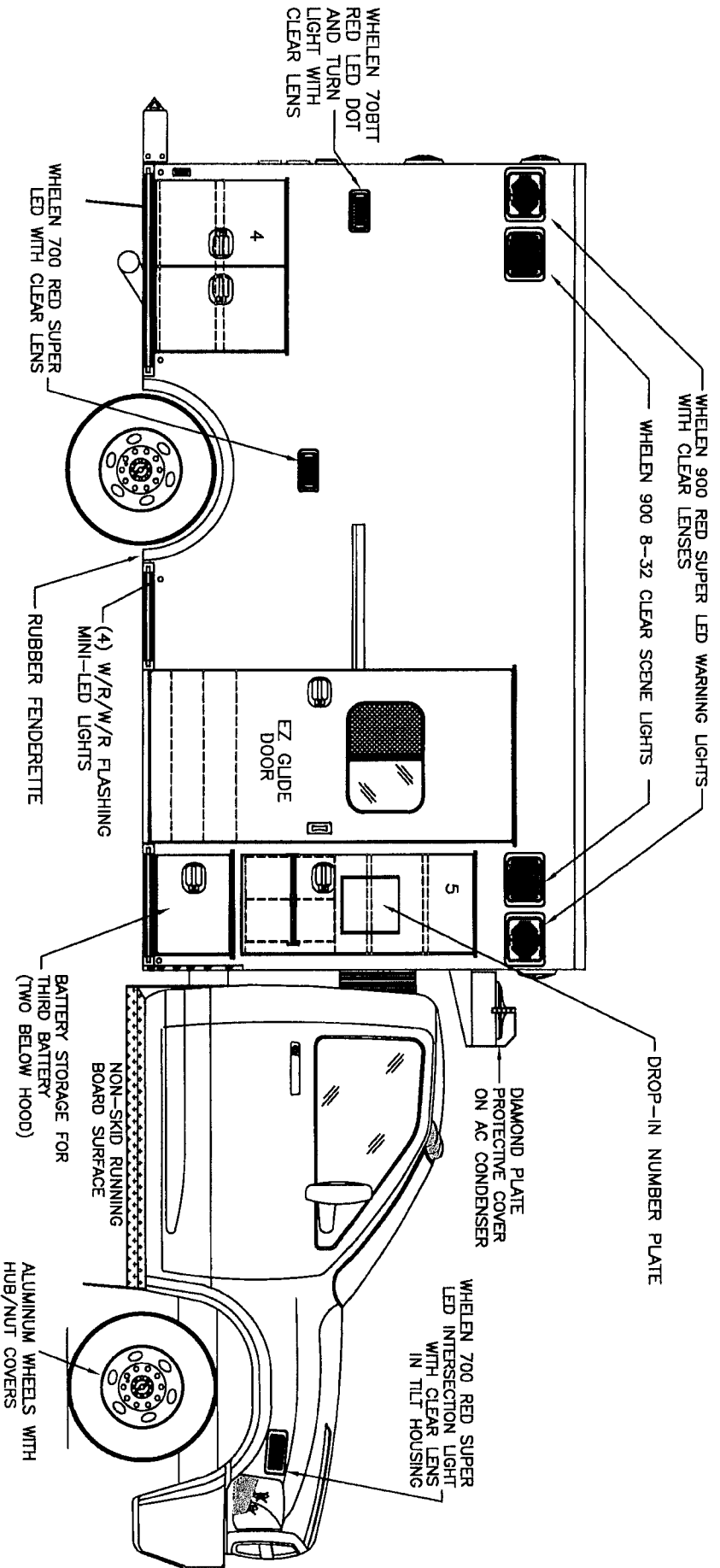
ST. JOHN'S COUNTY



2014 STREETSIDE EXTERIOR VIEW
 CHIEF XL-1/RAM 4500 CHASSIS

DATE:	18 AUG 14	DESIGNER:	GLF	REV.:	NR	DRAWN BY:	ST JOHNS-3	
SCALE:	1:30							

DIMENSIONS FOR OVERALL HEIGHT AND LENGTH ARE APPROXIMATE
 OVERALL HEIGHT = 110"
 OVERALL LENGTH = 306.5"
 MODULE LENGTH = 169"



COMPARTMENT
 O.S.S #4
 CLEAR OPENING: 26.75h x 32.25w
 INSIDE DIM'S: 28.50h x 36.25w x 20.75d
 (1) ADJUSTABLE SHELF

O.S.S #5
 CLEAR OPENING: 47.50h x 17.50w
 INSIDE DIM'S. 5A: SEE PARTITION INTERIOR VIEW
 INSIDE/OUTSIDE ACCESS WITH (2) ADJUSTABLE SHELVES
 17.5" WIDE TRANSVERSE BACKBOARD ACCESS WITH CENTER DIVIDER
 BACKBOARD OPENING TO HAVE NYLON STRAP

THIS DRAWING IS FOR REPRESENTATIONAL PURPOSES ONLY. DETAILS ARE CONCEPTUAL AND ARE SUBJECT TO CHANGE DURING DESIGN AND CONSTRUCTION
 DIMENSIONS ARE APPROXIMATE UNLESS NOTED OTHERWISE TO MEET A SPECIFIC CUSTOMER NEED.

ST. JOHN'S COUNTY

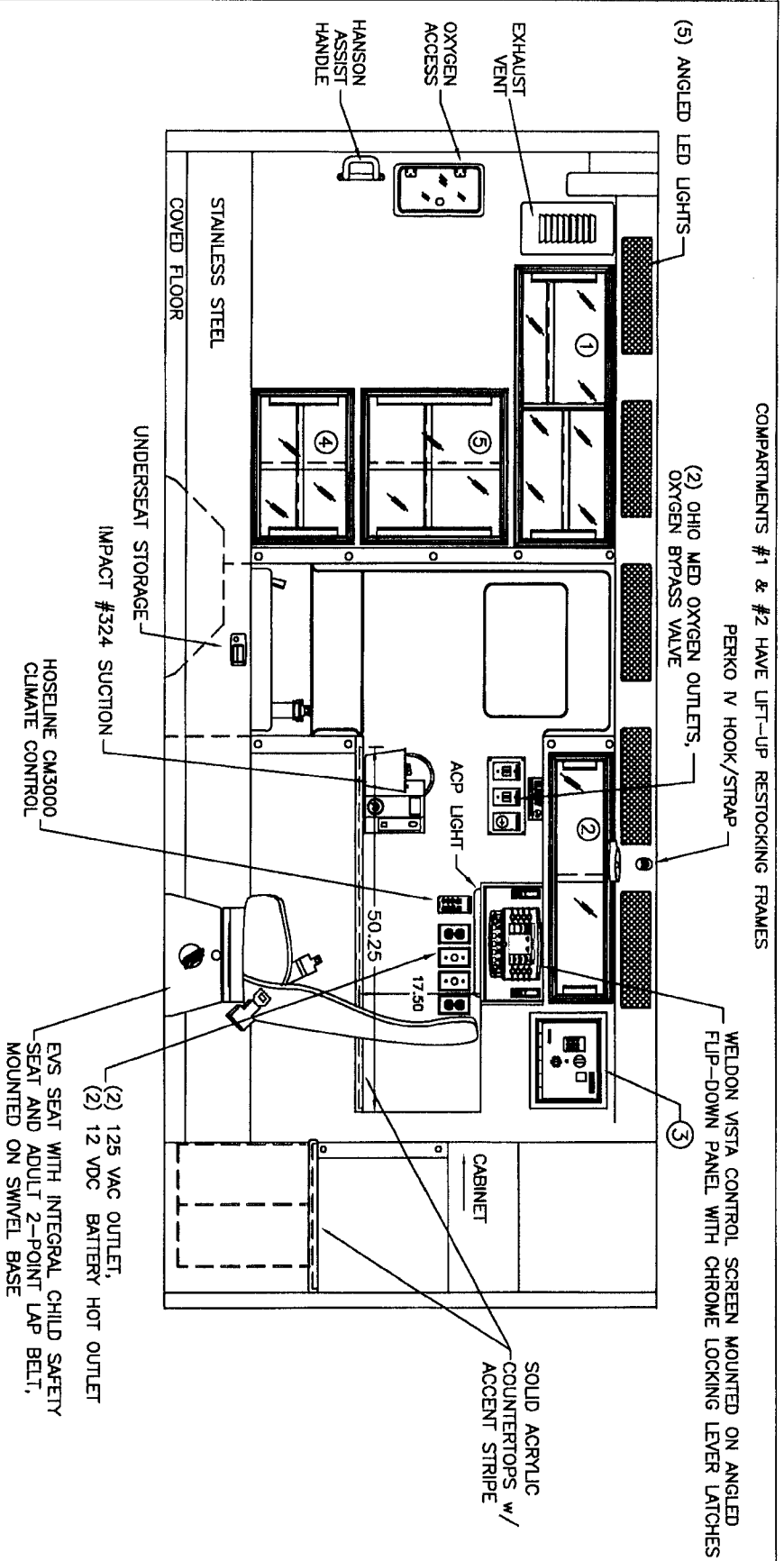


2014 CURBSIDE EXTERIOR VIEW
 CHIEF XL-1/RAM 4500 CHASSIS

DATE:	18 AUG 14
DWG.:	GLF
REV.:	NR

ST JOHNS-4

DRAWING NO.



COMPARTMENTS #1 & #2 HAVE LIFT-UP RESTOCKING FRAMES

(2) OHIO MED OXYGEN OUTLETS, PERKO IV HOOK/STRAP OXYGEN BYPASS VALVE

WELDON VISTA CONTROL SCREEN MOUNTED ON ANGLED FLIP-DOWN PANEL WITH CHROME LOCKING LEVER LATCHES

SOLID ACRYLIC COUNTERTOPS w/ ACCENT STRIPE

CABINET

ACP LIGHT

50.25
17.50

(2) 125 VAC OUTLET,
(2) 12 VDC BATTERY HOT OUTLET
EVS SEAT WITH INTEGRAL CHILD SAFETY SEAT AND ADULT 2-POINT LAP BELT, MOUNTED ON SWIVEL BASE

HOSELINE CM3000 CLIMATE CONTROL

UNDERSEAT STORAGE
IMPACT #324 SUCTION

STAINLESS STEEL
COVERED FLOOR

COMPARTMENT
#1 DOOR OPENING: 11.75h x 38.00w
INSIDE DIMS: 14.25h x 40.00w x 17.25d
FIXED CENTER DIVIDER
(1) ADJUSTABLE SHELF EACH SIDE OF DIVIDER
#2 DOOR OPENING: 6.75h x 33.25w
INSIDE DIMS: 9.25h x 35.25w x 17.25d

#3 = FLUSH-MOUNTED KNOX MEDVAULT
#4 DOOR OPENING: 12.00h x 20.00w
INSIDE DIMS: 14.00h x 24.50w x 16.25d
(1) ADJUSTABLE SHELF
#5 DOOR OPENING: 18.75h x 20.00w
INSIDE DIMS: 20.50h x 24.50w x 16.25d
(1) ADJUSTABLE SHELF

CABINETS TO BE ALUMINIUM
CABINET SHELF TRACK TO BE RECESSED

THIS DRAWING IS FOR REPRESENTATIONAL PURPOSES ONLY. DETAILS ARE CONCEPTUAL AND ARE SUBJECT TO CHANGE DURING DESIGN AND CONSTRUCTION
DIMENSIONS ARE APPROXIMATE UNLESS NOTED OTHERWISE TO MEET A SPECIFIC CUSTOMER NEED.

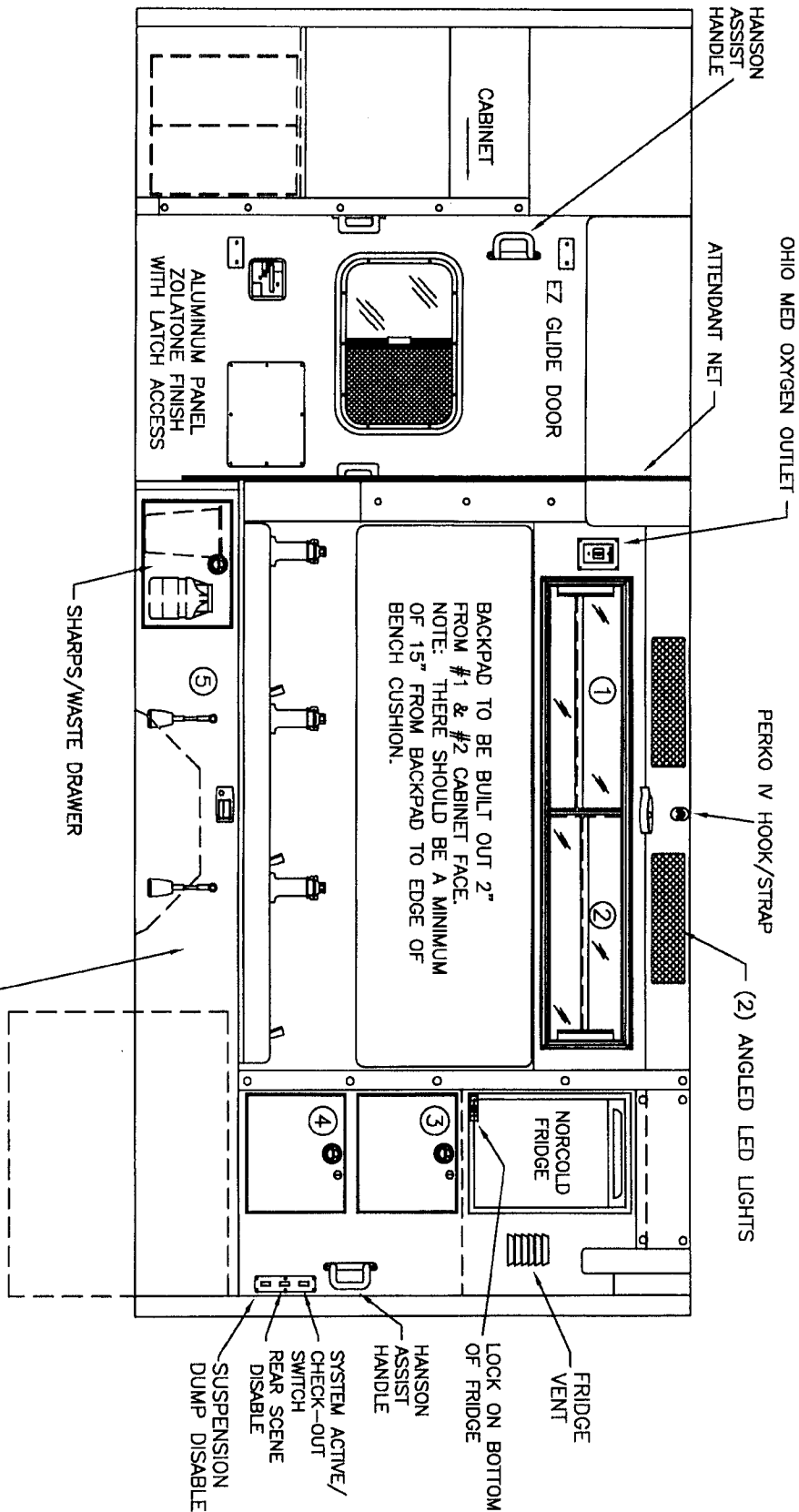
ST. JOHN'S COUNTY



2014 STREETSIDE INTERIOR VIEW
CHIEF XL-1

DATE:	18 AUG 14	DRAWING NO.:	ST JOHN'S-5
DWG.:	GLF	REV.:	NR
DATE:	1:22		

COMPARTMENTS #1 & #2 HAVE LIFT-UP RESTOCKING FRAME



COMPARTMENT
 #1-#2 DOOR OPENING: 9.25h x 58.75w
 INSIDE DIMS: 11.75h x 60.75w x 5.00d
 PERMANENT DIVIDER (CENTERED)
 (1) ADJUSTABLE SHELF ON EACH SIDE OF DIVIDER

#3-#4 PULL-OUT DRUG STORAGE DRAWERS
 INSIDE DIMS: 12.00h x 14.00w x 14.00d
 ONE (1) SOUTHCO STAINLESS STEEL FLUSH PULL LOCKING LATCH PER DRAWER
 ONE (1) KV-70 CYLINDER LOCK PER DRAWER
 LOCKING SLIDES FOR OPEN POSITION

#5 = MISC. STORAGE BELOW BENCH CUSHION

THIS DRAWING IS FOR REPRESENTATIONAL PURPOSES ONLY. DETAILS ARE CONCEPTUAL AND ARE SUBJECT TO CHANGE DURING DESIGN AND CONSTRUCTION
 DIMENSIONS ARE APPROXIMATE UNLESS NOTED OTHERWISE TO MEET A SPECIFIC CUSTOMER NEED.

CABINETS TO BE ALUMINIUM
 CABINET SHELF TRACK TO BE RECESSED

ST. JOHN'S COUNTY



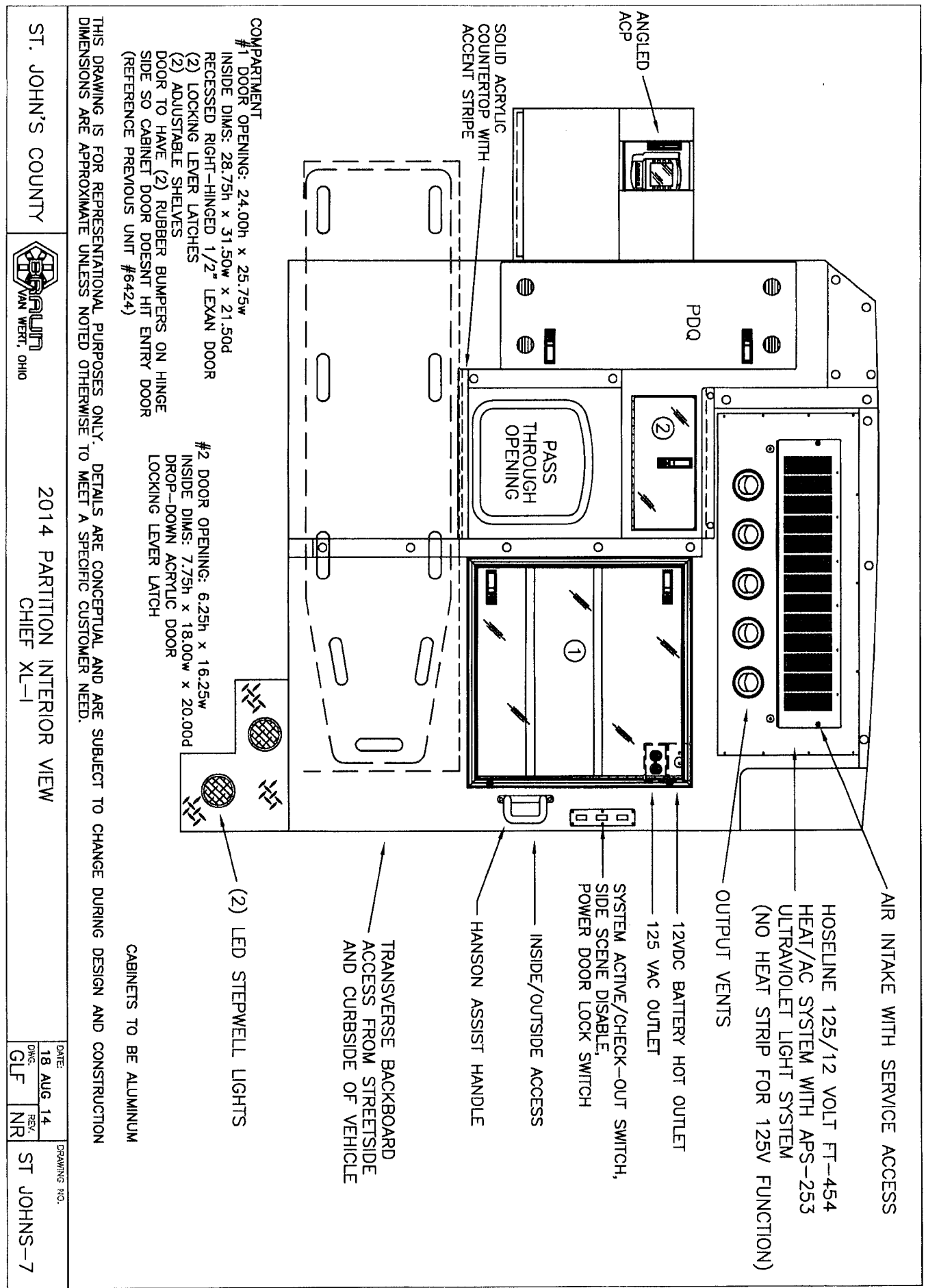
2014 CURBSIDE INTERIOR VIEW

CHIEF XL-1

DATE:	18 AUG 14
DWG:	GLF
REV.:	NR

DRAWING NO. ST JOHNS-6

1:20

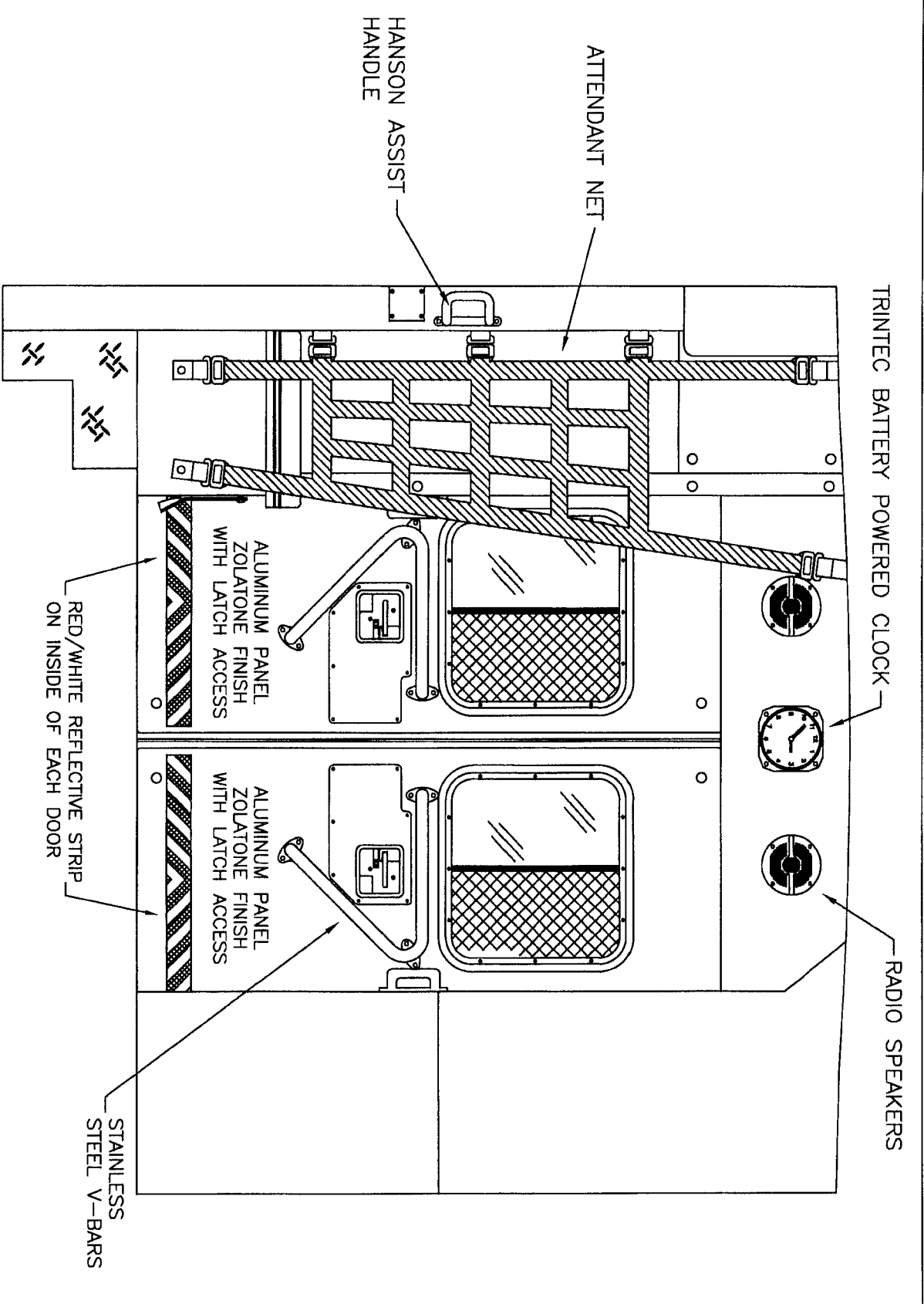


THIS DRAWING IS FOR REPRESENTATIONAL PURPOSES ONLY. DETAILS ARE CONCEPTUAL AND ARE SUBJECT TO CHANGE DURING DESIGN AND CONSTRUCTION. DIMENSIONS ARE APPROXIMATE UNLESS NOTED OTHERWISE TO MEET A SPECIFIC CUSTOMER NEED.

COMPARTMENT
 #1 DOOR OPENING: 24.00h x 25.75w
 INSIDE DIMS: 28.75h x 31.50w x 21.50d
 RECESSED RIGHT-HINGED 1/2" LEXAN DOOR
 (2) LOCKING LEVER LATCHES
 (2) ADJUSTABLE SHELVES
 DOOR TO HAVE (2) RUBBER BUMPERS ON HINGE
 SIDE SO CABINET DOOR DOESN'T HIT ENTRY DOOR
 (REFERENCE PREVIOUS UNIT #6424)

#2 DOOR OPENING: 6.25h x 16.25w
 INSIDE DIMS: 7.75h x 18.00w x 20.00d
 DROP-DOWN ACRYLIC DOOR
 LOCKING LEVER LATCH

(2) LED STEPWELL LIGHTS
 CABINETS TO BE ALUMINUM



THIS DRAWING IS FOR REPRESENTATIONAL PURPOSES ONLY. DETAILS ARE CONCEPTUAL AND ARE SUBJECT TO CHANGE DURING DESIGN AND CONSTRUCTION. DIMENSIONS ARE APPROXIMATE UNLESS NOTED OTHERWISE TO MEET A SPECIFIC CUSTOMER NEED.

ST. JOHN'S COUNTY



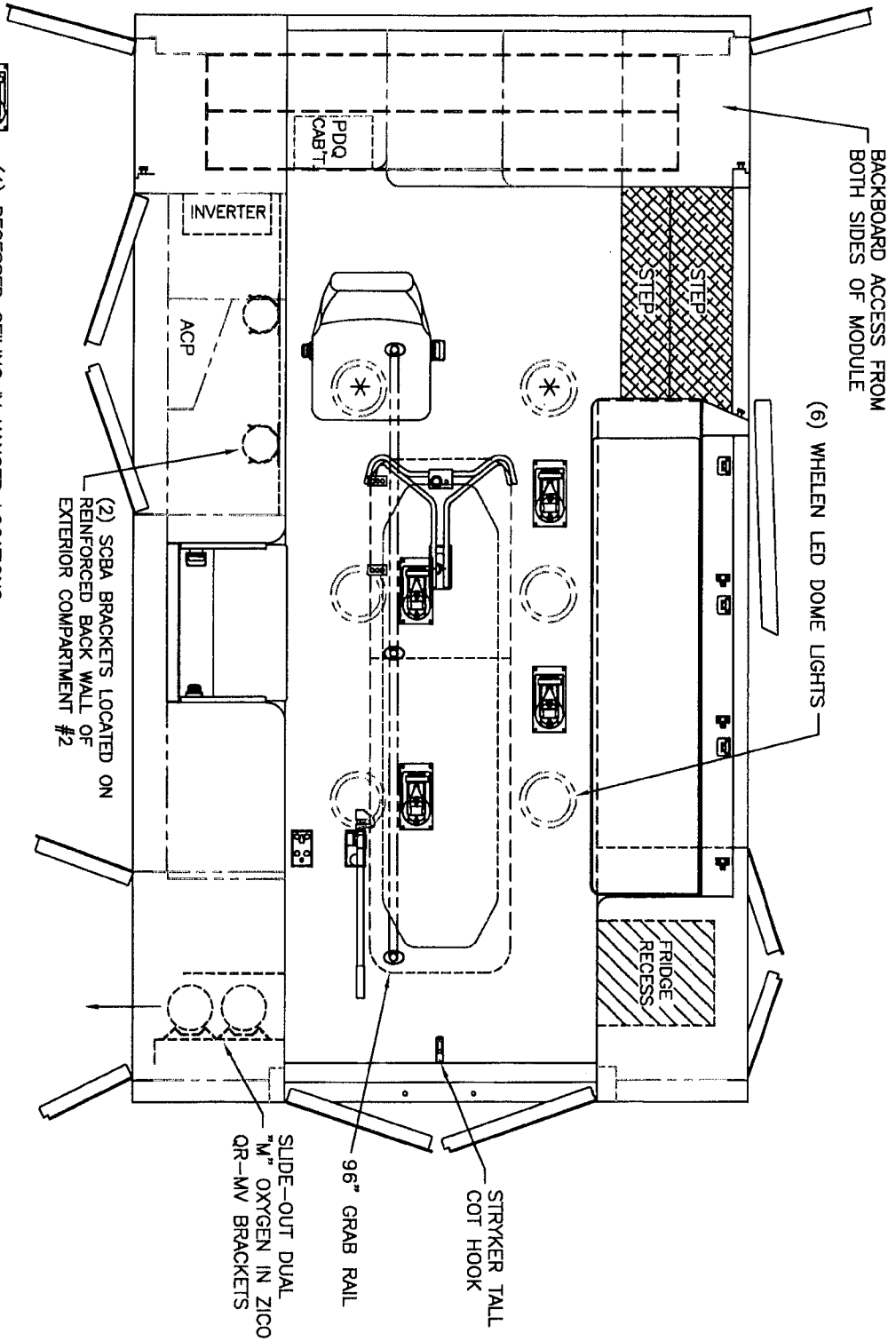
2014 REAR INTERIOR VIEW
CHIEF XL-1

1:12

DATE	18 AUG 14
DWG.	GLF/NR

DRAWING NO.

ST JOHN'S--8



 = (4) RECESSED CEILING IV HANGER LOCATIONS

* (2) ANTENNA BASES LOCATED OUTBOARD OF DOME LIGHTS WITH COAX SERVICE LOOP

STRYKER SIDE AND CENTER MOUNT COT HARDWARE

(2) SCBA BRACKETS LOCATED ON REINFORCED BACK WALL OF EXTERIOR COMPARTMENT #2

MODULE WIDTH = 96"
 MODULE LENGTH = 169"
 MODULE HEAD ROOM = 72"

THIS DRAWING IS FOR REPRESENTATIONAL PURPOSES ONLY. DETAILS ARE CONCEPTUAL AND ARE SUBJECT TO CHANGE DURING DESIGN AND CONSTRUCTION. DIMENSIONS ARE APPROXIMATE UNLESS NOTED OTHERWISE TO MEET A SPECIFIC CUSTOMER NEED.

ST. JOHN'S COUNTY



2014 FLOOR INTERIOR VIEW
 CHIEF XL-1

DATE:	18 AUG 14	DRAWN:	GLF	REV:	NR	DRAWING NO.:	ST JOHNS-9	
SCALE:	1:22							

QUOTATION

Ten 8 Fire Equipment Inc.

St. John's County Fire Rescue
 Chief Jeff Prevatt
 3657 Gaines Road
 St. Augustine, FL 32804
 904-209-1702
 jprevatt@sjcfl.us

Exp. Date: 12/26/2014
 Quote No: 10016-0001
 10/22/2014

PART NO	S	DESCRIPTION	QTY	ID
		== Chief XL 2014 Type I / 169" Module - 14.400 01/20/14 ==	1	BI
00-01-0026	< >	FSA CONTRACT This order does specify an FSA contract	1	BI
00-01-0242	<	TYPE I - AMBULANCE - CHIEF XL I - 72" INTERIOR HEADROOM 2014 CHIEF XL I - 169" MODULE	1	BI
		CHASSIS PACKAGES	1	BI
10-04-0031	<	CHASSIS - RAM 4500 192" WB 4x2 2015	1	BI
10-08-0000	<	** NO CUSTOM CHASSIS REQUIRED ** NO SPECIAL CHASSIS QUOTED	1	BI
20-10-0099		FUEL TANK - FULL UPON FACTORY RELEASE	1	BI
20-10-0103	<	SUSPENSION - LIQUID SPRING Liquid Spring IPOS Kelderman	1	BI
20-10-0112	<	INBOARD ARM RESTS Install inboard arm rests in the cab. (arm rests Havis Shields C-ARM-102 mount to floor console) Reference truck 5875	1	BI
20-10-0209		BATTERY - TWO SYSTEM - D SERIES CHASSIS	1	BI
20-10-0603		ENGINE BLOCK HEATER - OEM PLUG	1	BI
20-20-0126	< >	FLOOR CONSOLE - ANGLED FRONT - REMOVABLE PLATES - ALUMINUM A center floor console manufactured out of aluminum and covered in a black onyx zolatone. The console shall include a raised area for the Weldon Vista display on a hinged adjustable mount. The lower portion of the console shall consist of a flat area that shall contain the siren, two (2) drink holders, and then to the rear center a recessed storage area for maps and reports. The console face plates shall be removable for accessibility and serviceability.	1	BI

PART NO	S	DESCRIPTION	QTY	ID
20-20-0251		HEAT SHIELDS	1	BI
20-30-0210	<	MIRRORS, EXTERIOR OEM POWER TRAILER TOW MIRRORS The chassis shall have OEM foldaway power/heated trailer tow mirrors.	1	BI
20-30-0806		RUNNING BOARDS - STAR PUNCHED DIAMOND PLATE	1	BI
20-40-0208	< >	OEM WHEELS - WITH VALVE STEM EXTENSIONS Delete the Stainless Steel Wheel liners, Keep Valve Extensions and OEM wheels.	1	BI
30-06-0002		ELECTRICAL SYSTEM - WELDON V-MUX, MICRO PROCESSOR BASED	1	BI
30-06-0010		VISTA IV MCC - PUSH BUTTON	1	BI
30-06-0015		VISTA IV ACP - PUSH BUTTON	1	BI
30-06-0026		WARNING DISPLAY - MULTIPLEX ELECTRICAL SYSTEM	1	BI
30-06-0050		DAYTIME RUNNING LAMPS - MULTIPLEX ELECTRICAL SYSTEM	1	BI
30-06-0076		MASTER CONTROL CONSOLE (MCC) - MULTIPLEX ELECTRICAL SYSTEM	1	BI
30-06-0101		ATTENDANT CONTROL PANEL (ACP) - MULTIPLEX ELECTRICAL	1	BI
30-06-0126		ELECTRICAL COMPARTMENT (PDQ) - MULTIPLEX ELECTRICAL SYSTEM	1	BI
30-06-0150		SPARE CIRCUIT - MULTIPLEX ELECTRICAL SYSTEM	1	BI
30-06-0175		WIRING HARNESS CONNECTORS - MULTIPLEX ELECTRICAL SYSTEM	1	BI
30-06-0200		RADIO TIE-IN POINTS - MULTIPLEX ELECTRICAL SYSTEM	1	BI
30-06-0225		EMERGENCY MASTER SWITCH - MULTIPLEX ELECTRICAL SYSTEM	1	BI
30-06-0250		CONTROL PANEL SWITCHES - MULTIPLEX ELECTRICAL SYSTEM	1	BI
30-06-0275		MODULE POWER SWITCH - MULTIPLEX ELECTRICAL SYSTEM	1	BI
30-06-0285		MODULE DISCONNECT - MULTIPLEX ELECTRICAL SYSTEM	1	BI
30-06-0300		VOLTMETER - MULTIPLEX ELECTRICAL SYSTEM	1	BI
30-06-0325		FLASHER - MULTIPLEX ELECTRICAL SYSTEM	1	BI
30-06-0350		FLASHING HEADLIGHTS - MULTIPLEX ELECTRICAL SYSTEM	1	BI
30-06-0375		PARK OVERRIDE - MULTIPLEX ELECTRICAL SYSTEM	1	BI
30-06-0400		LOAD MANAGER-SEQUENTIAL SWITCHING SYSTEM - MULTIPLEX ELECTRIC	1	BI
30-06-0425		WARNING LIGHTS SWITCH - MULTIPLEX ELECTRICAL SYSTEM	1	BI
30-06-0450		FRONT CLEAR DISABLE SWITCH - MULTIPLEX ELECTRICAL SYSTEM	1	BI
30-06-0475		CURBSIDE SCENE LIGHTS "ON" WITH CURBSIDE DOOR - MULTIPLEX EL	1	BI

PART NO	S	DESCRIPTION	QTY	ID
30-06-0500		REAR SCENE LIGHTS "ON" WITH REAR DOORS OPEN - MULTIPLEX ELEC	1	BI
30-06-0525		DISABLE SWITCH FOR REAR SCENE LIGHTS - MULTIPLEX ELECTRICAL	1	BI
30-06-0550		DISABLE SWITCH FOR SIDE SCENE LIGHTS - MULTIPLEX ELECTRICAL	1	BI
30-06-0575		REVERSE (TRANSMISSION) FUNCTIONS - MULTIPLEX ELECTRICAL	1	BI
30-10-0012	< >	AIR HORNS - BUELL DUAL TRUMPETS 10" & 12", UNDR BMPR W/SW Air Horn - (Buell) dual trumpets, one (1) 10" and one (1) 12", mounted under front bumper, one each side, compressor w/cover in OSS #2. The air horns shall be activated by a push button switch located on the MCC (master control console). See Dwg #1	1	BI
30-10-0030	>	BACKUP ALARM	1	BI
30-10-0071	< >	CAMERA REAR VIEW - SINGLE SYSTEM - VISTA SCREEN Install camera system rear view, tied to M-Tech display screen. Per Dwg #2	1	BI
30-10-0073	< >	CAMERA PATIENT AREA SINGLE SYSTEM - VISTA SCREEN Install camera system to monitor the patient compartment, tied to M-Tech display screen. See Dwg #8	1	BI
30-10-0110		ELECTRICAL CIRCUITS	1	BI
30-10-0190		GROUND FAULT CIRCUIT INTERRUPTER (GFCI)	1	BI
30-10-0262	< >	INVERTER, VANNER - 1050 WATT, #20-1050CUL-DC CHARGER Vanner 20-1050CUL 1050-DC watt inverter with battery conditioner/charger, w/remote switch - non-hardwired shall be installed in OSS #2	1	BI
30-10-0290	<	LIGHT, ATTENDANT CONTROL PANEL AREA Install light above action area counter. See Dwg #5	1	BI
30-10-0310	<	LIGHT, ELECTRICAL COMPARTMENT (PDQ) A 12 VDC light shall be located in the PDQ. The light shall be wired "battery-hot" to activate when the PDQ door is in the open position. The light shall be off when the door is in the closed position.	1	BI
30-10-0410	>	LIGHT OSS COMPARTMENT - INCANDESCENT	1	BI
30-10-0431	<	LIGHT, STEPWELL - CURBSIDE DOORWAY - 2" LED SURFACE MNT Light, stepwell - side doorway, Whelen 2" LED (#18105 with surface mount flange #27190). See Dwg #7	1	BI
30-10-0472		LIGHTS, DOME HALOGEN (10) - MULTIPLEX ELECTRIC SYSTEM	1	BI
30-10-0486	<	LIGHTS, RECESSED LED PANEL (5) STREETSIDE - ANGLED Install Five (5) 12 VDC powered Grote#61261 LED WhiteLight recessed lights streetside IPOS fluorescent lights (Braun #27172). See Dwg #5	1	BI

PART NO	S	DESCRIPTION	QTY	ID
30-10-0490	<	LIGHTS, RECESSED LED PANEL (2) CURBSIDE - ANGLED Install Two (2) 12 VDC powered Grote #61261 LED WhiteLight recessed lights curbside IPOS fluorescent lights (Braun #27172). See Dwg #6	1	BI
30-10-0534	< >	OUTLETS, 125VAC - FOUR (4) INTERIOR DUPLEX One (1) in forward action area (std) One (1) in rear action area (std) One (1) in lower front wall cabinet (std) One (1) additional, outlet shall be installed in a location to be determined at the pre-construction meeting.	1	BI
30-10-0560	< >	OUTLETS, 12VDC - THREE (3) INTERIOR POWERPOINT One (1) in forward action area (std) One (1) in lower front wall cabinet (std) One (1) additional, outlet shall be installed in a location to be determined at the pre-construction meeting.	1	BI
30-10-0657		RADIO ANTENNA BASES - TWO (2)	1	BI
30-10-0721	<	RECEPTACLE SHORELINE INLET-20 AMP, NON-AUTO EJECT Install 20 amp manual (non-auto eject) shoreline receptacle. IPOS	1	BI
30-10-0738	S < >	REFRIGERATOR - NORCOLD 1.7 CU FT BUILT-IN Install an aisle facing, Nor-Cold refrigerator in upper cabinet at rearward end of squad bench IATS, per dwg. # 6. Install Medico lock on aluminum plate to secure. Install thermometer on fridge, surface mount and drill hole and run wire inside for probe. Thermometer to be Grainger 2LYX2/Miljoco CD104684-60W Thermometer)	1	BI
30-10-0753	<	SIREN, WHELEN 295-HFSA7-REMOTE WITH MICROPHONE A Whelen 295-HFSA7 remote dual siren amplifier shall be flush-mounted in the master control console located in the cab. The siren shall be capable of hands-free operation and shall be equipped with a noise canceling microphone.	1	BI
30-10-0814	<	SIREN SPEAKERS, WHELEN SA315 - BEHIND THE BUMPER Whelen dual 100 watt siren speakers shall be installed behind the bumper.	1	BI
30-10-0901		SYSTEM ACTIVE AND CHECK OUT LIGHTS - 5 MINUTES	1	BI
30-15-0001		** NO TABLET WITH MOUNT REQUIRED **	1	BI
30-15-0002		**NO MOUNT FOR TABLET REQUIERED**	1	BI
30-25-0102	<	LIGHTS, ICC / LED CLEARANCE - WITH CHROME BEZELS ON MODULE SIDE The vehicle shall have two (2) red surface mounted LED clearance /	1	BI

PART NO	S	DESCRIPTION	QTY	ID
		ICC lights with chrome bezels : one (1) red on each side at the rear of the vehicle which will also function with the turn signals. Per Dwg #3 and #4		
30-25-0103	<	LIGHTS, ICC / LED CLEARANCE - WITH CHROME BEZELS ON MODULE FRONT The vehicle shall have five (5) amber surface mounted LED clearance / ICC lights with chrome bezels on the front of the module near the roof line.	1	BI
30-25-0104	<	LIGHTS, ICC / LED CLEARANCE - WITH CHROME BEZELS ON MODULE REAR The vehicle shall have five (5) red surface mounted LED clearance / ICC lights with chrome bezels on the rear of the module near the roof line.	1	BI
30-25-0201	<	LIGHTS, RUNNING BOARD - WHELEN MINI - LED (1) EACH SIDE Light, Running Board - (Whelen) mini LED, one (1) white cluster on each side, IATS. Lights to operate with the cab door switches.	1	BI
30-25-3114	<	LIGHTS, FRONT GRILLE - (4) WHELEN 700 SUPER LED - RED W/CLR LENS Install two (2) additional Whelen 700 red LED lights w/clear lens, making a total of four (4) installed. All with clear lens IPOS Lights to flash in an X pattern.	1	BI
30-25-4201	<	LIGHTS, FRONT MODULE - WHELEN (7)900 - (6)RED, (1)CLEAR LED W/CLEAR LENS Seven (7) Whelen 900 series super LED lights with chrome bezels shall be installed on the module front. There shall be six (6) red and one (1) center clear light. All lights to have clear lens IPOS	1	BI
30-26-3002	< >	LIGHTS, REAR TAIL - WHELEN 600 LED STOP, TURN, HALOGEN BK-UP One (1) pair each of Whelen 600 series led stop/tail lights, turn lights, and halogen back-up lights with chrome bezels shall be installed on the rear of the module. (meets SAE)	1	BI
30-26-5101	<	LIGHTS, REAR WINDOW-LEVEL - WHELEN (2)900 LED - RED W/CLR LENS Two (2) Whelen 900 series red super LED lights w/clear lenses and chrome flanges shall be installed on the rear of the module at window level, one (1) on each side. Per dwg #2	1	BI
30-26-6101	<	LIGHTS, REAR MODULE -WHELEN (2)900 RED, (1)600 AMB LED, (2)600 HALO SCN CLR LEN Two (2) Whelen 900 series red super LED lights w/clear lens, two (2) Whelen 600 series halogen scene/load lights, and one (1) Whelen 600 series amber super LED light w/clear lens shall be installed on the rear of the module w/chrome flanges. See dwg #2	1	BI

PART NO	S	DESCRIPTION	QTY	ID
		Lights to be installed as low as possible to leave room for possible future install of traffic advisor. See dwg #2		
30-26-7002		LIGHT, LICENSE PLATE LED	1	BI
30-27-1114	<	LIGHTS, INTERSECTION FRONT - WHELEN 700 SUPER LED - RED W/CLR LENS Two (2) Whelen 700 series red super LED warning lights, with clear lens and water-proof connectors shall be mounted, in 15 degree tilt housings on the front chassis fenders, one (1) on each side.	1	BI
30-27-2007	<	LIGHTS, SIDE MODULE SCENE - WHELEN 900 HALOGEN - CLEAR (4) Four (4) Whelen 900 series (gradient optics) halogen scene lights with chrome bezels shall be installed, two (2) each module side, inboard of the warning lights.	1	BI
30-27-3009	<	LIGHTS, SIDE MODULE WARNING - WHELEN 900 LED-RED W/CLR LENS Four (4) Whelen 900 series red super LED warning lights with clear lenses and chrome bezels shall be installed, two (2) each module side, outboard of the side module scene lights. Per dwg #3 & #4	1	BI
30-27-4115	<	LIGHTS, INTERSECTION REAR - WHELEN 700 SUPER LED - RED W/CLR LENS Two (2) Whelen 700 series red super LED warning lights with clear lenses, chrome flanges and water-proof connectors, shall be installed above the rear wheel wells, one (1) on each side Per Dwg #3 & #4	1	BI
30-27-4151	<	LIGHTS, ABOVE RUB RAIL - TECNIQ LED - 4 EACH SIDE Light Package - TecNiq-LED lights shall be installed above the rub rail. Four (4) LED's each side, two (2) white LED's and two (2) red LED's equally spaced along the module side, for a total of eight (8) lights. (Red-White-Red White on each side)The LED mini clusters shall alternate flash with box warning lights.	1	BI
39-00-0001		MODULE BODY CONSTRUCTION - SEAMLESS	1	BI
40-00-0009		ALUMINUM PARTS - MODULE EXTERIOR	1	BI
40-00-0010		CORROSION MINIMIZATION - MODULE	1	BI
40-00-0019	<	DOOR SKINS, OUTSIDE STORAGE COMPARTMENTS - DIAMOND PLATE INTERIOR SKINS The interior door skins for all outside storage compartments shall be constructed of .063" thick aluminum diamond plate.	1	BI

PART NO	S	DESCRIPTION	QTY	ID
40-00-0020		DOOR CONSTRUCTION - GASKET PLACEMENT	1	BI
40-00-0030		EXTERIOR COMPARTMENTS DESIGN	1	BI
40-00-0050		EXTERIOR COMPARTMENTS, VENTING	1	BI
40-00-0055		EXTERIOR COMPARTMENTS, VENTING - OXYGEN STORAGE	1	BI
40-00-0060		EXTERIOR COMPARTMENTS - SWEEP-OUT	1	BI
40-00-0070		HANDLES, EBERHARD - CHROME FREE FLOATING TYPE	1	BI
40-00-0080		INSULATION - POLYURETHANE SPRAY FOAM	1	BI
40-00-0081		COATING, ACOUSTIC - AUDIOGUARD	1	BI
40-00-0091		THRESHOLD, STAINLESS STEEL - EXTERIOR STORAGE COMPARTMENT	1	BI
40-09-0164	S < >	ZICO SCBA HOLDERS TWO (2) Two (2) Zico SCBA holders shall be provided and installed in a fixed location in OSS#2 . KD-UH-6-SF	1	BI
40-10-0030	<	DOCK BUMPERS, REAR Install rear dock bumpers.	1	BI
40-10-0066		DOOR SLIDING - MODULE CURBSIDE PASSAGE	1	BI
40-10-0088		DOORS - REAR PASSAGE	1	BI
40-10-0100	<	FENDERETTES - RUBBER Install Black Rubber Fenderettes IPOS	1	BI
40-10-0120	<	HOLD-OPEN - REAR DOORS - GRABBERS Door grabbers (1 pair) with hard rubber inserts shall be installed on the rear doors. Reference dwg #2 for location..	1	BI
40-10-0151	<	SWITCH DOOR UNLOCK - HIDDEN IN FRONT GRILLE AREA An exterior hidden door unlock switch shall also be included and located in the front grille area.	1	BI
40-10-0189	<	LOCKS POWER - PASSAGE, COMPARTMENTS, KEY FOBS Install power door locks on module passage doors, and (5) OSS compartments, use OEM key fobs.	1	BI
40-10-0200		MUD FLAPS, REAR - BLACK RUBBER	1	BI
40-10-0266		REAR STEP/BUMPER -FLIP-UP CENTER SECTION - STAR PUNCHED AND ANODIZED	1	BI
40-10-0280	XS <	RUB RAILS, ANODIZED ALUMINUM Bright dip anodized polished aluminum rub rails shall be installed on the lower sides of the body below the outside compartment sill areas. The rub rails shall be offset 3/16" from the body to facilitate wash down of road debris. The rub rails shall incorporate a recessed 5/8" wide black reflective scotchlite safety accent stripe.	1	BI
40-10-0321		STEPWELL, CURBSIDE DOORWAY - MID STEP AREA	1	BI
40-10-0340		STONE GUARDS, MODULE FRONT - ANODIZED DIAMOND PLATE (24" H)	1	BI
40-10-0360	<	KICKPLATE/THRESHOLD, REAR DOORWAY - ANODIZED DIAMOND PLATE A bright dip anodized aluminum diamond plate kick plate shall be installed at the rear exterior doorway, providing a kick / scuff plate at the rear of the vehicle above the rear step. per dwg. # 2.	1	BI

PART NO	S	DESCRIPTION	QTY	ID
40-10-0381		TOW HOOKS, MODULE REAR	1	BI
40-10-0386	< >	VEHICLE ID PLACARDS (Total 3) Three (3) vehicle ID placards shall be provided and installed as follows One (1) located forward on the street side of the module One (1) located forward on the curb side of the module One (1) located on the rear of the module The placards are to be painted to match the color of the unit and to be 12" x 12" with the unit number decal installed. The number(s) on the placard to be reflective without shadow. Unit number and exact location to be determined at the pre-construction meeting.	1	BI
40-10-0506	<	WINDOWS, PASSAGE DOOR - (CURB SLIDING, REAR SLIDING) Install sliding windows with screens in rear doors IPOS	1	BI
41-01-0201	XS <	OUTSIDE STORAGE #1 - STREETSIDE FORWARD Modifications: Transverse backboard storage to OSS#5 to have (2) sections with one divider (chute dimensions 17.5" w x 19" ID x 74" L) Install strap across transverse opening. Install (2) adjustable shelves above chute, allow minimum of 17.75" below the chute for storage. Per dwg 3 layout. Shelf track to stop at the top of the transverse storage area in OSS#1.	1	BI
41-02-0052	<	SHELF TRACK - EXPOSED - OSS #1 Install exposed shelf track in OSS #1	1	BI
41-02-0103	< >	SHELVES TWO (2) IN OUTSIDE STORAGE #1 Install two (2) adjustable shelves in OSS #1.	1	BI
41-03-0102	XS < >	DIVIDER, FIXED - ONE (1) IN OSS #1 Install one (1) fixed divider in OSS #1. See dwg. #3	1	BI
42-01-0201	XS <	OUTSIDE STORAGE #2 - STREETSIDE CENTER Delete the standard adjustable shelf and install two (2) SCBA brackets on reinforced back wall, Zico KD-UH-6-SF per dwg #3	1	BI
42-02-0053	XS <	SHELF TRACK - RECESSED - OSS #2 Delete shelf track in OSS#2	1	BI
42-02-0102	XS < >	SHELF ONE (1) IN OSS #2 DELETE one (1) adjustable shelf in OSS #2.	1	BI
43-01-0201	XS <	OUTSIDE STORAGE #3 - STREETSIDE REAR - TALL DOOR Dual "M" tanks on a slide out board with Zico QR-MV brackets. Vertical divider next to O2 slide out. (3) Adjustable shelves forward of the divider. A fixed shelf 8" above floor below slider for storage	1	BI

PART NO	S	DESCRIPTION	QTY	ID
		for (2) "D" cylinders below slide out oxygen. An oxygen vent on right side of door per dwg #3. The "M" tanks shall be able to be switched enroute from the interior in case runs low. Provide and install two (2) oxygen regulators with "T" to main O2 line so customer can switch between bottles without removing a regulator.		
43-02-0053	<	SHELF TRACK - RECESSED - OSS #3 Install recessed shelf track in OSS #3	1	BI
43-02-0102	XS < >	SHELF ONE (1) IN OSS #3 Install three (3) adjustable shelf in OSS #3. forward of the divider. per dwg #3	1	BI
43-03-0102	XS < >	DIVIDER, FIXED - ONE (1) IN OSS #3 Install one (1) fixed divider in OSS #3 to separate the Oxygen bottles from shelves	1	BI
43-04-0102	XS < >	TRAY (1) SLIDE OUT W/TREMPRO LINING OUTSIDE STORAGE #3 Install one (1) slide-out board to hold (2) "M" oxygen cylinders in OSS #3	1	BI
44-01-0011	XS <	PACKAGE - OXYGEN STORAGE OSS #4 OSS #4 to be full depth constructed and shortened per dwg. dimensions. Compartment enclosed with double doors and equipped with one (1) adjustable shelf IPOS, per dwg. # 4.	1	BI
44-01-0201	XS <	OUTSIDE STORAGE #4A BOARD/SCOOP, #4B O2 CYLINDER - RT. REAR Change OSS #4 per dwg.#4. clear opening 26.75" x 32.25" with inside dimensions 28.5"h x 36.25"w x 20.75" d. one (1) adjustable shelf	1	BI
45-01-0201	XS <	OUTSIDE STORAGE #5 - CURBSIDE FORWARD OSS#5 shall have a transverse backboard storage to OSS#1 with inside/ outside access to lower front wall cabinet IPOS per dwg. #3, #4 and #7. Install a strap across transverse opening. Maintain the (2) standard adjustable shelves upper portion on the lower front wall cabinet per drwg #7. A LOWER compartment shall be added for an additional 3rd battery. per dwr #4.	1	BI
50-00-0202		ROUNDED INTERIOR CORNERS	1	BI
50-01-0407	<	LATCHES CABINET - CHROME / STAINLESS STEEL Install chrome locking lever latch on ACP , PDQ, and radio cabinet doors. Install Southco stainless steel locking flush pull latches on all other interior drawers and doors.	1	BI

PART NO	S	DESCRIPTION	QTY	ID
50-10-0145		CABINET - LEFT WALL, UPPER REAR #1 - FIXED FRAME	1	BI
50-10-0151	<	CABINET - LEFT WALL, UPPER #1A TOP HINGED The left wall, interior angled cabinet (#1A) located above the rear action area, enclosed by one (1) top hinged solid door attached to hold-open(s), and covered with dry erase surface material. Door to be secured with a stainless steel locking flush pull latch, per dwg. #5.	1	BI
50-10-0161	<	CABINET - LEFT WALL, UPPER #2A TOP HINGED The left wall, interior angled cabinet (#2A) located above the attendant control area, enclosed by one (1) top hinged solid door attached to hold-open(s), and covered with dry erase surface material. Door to be secured with a stainless steel locking flush pull latch, per dwg. #5.	1	BI
50-10-0206	<	CABINET - LEFT WALL, UPPER OVER PANEL #2 - FIXED FRAME The cabinet shall contain one (1) adjustable shelf. See dwg #5	1	BI
50-10-0229	<	LEFT WALL - ATTENDANT CONTROL PANEL - HINGED PANEL The color micro processor screen shall be installed on an angled hinged access panel and secured with two (2) latches. The panel will be located to the immediate right of the attendant's seat. The forward portion of the panel will contain a flat area that may be used for future radio mounting etc.	1	BI
50-10-0421	<	DRAWERS - LEFT WALL - REAR ACTION AREA (2) DRAWER UNIT #4 A two (2) drawer cabinet unit shall be installed under the second action area on the interior streetside of the module IATS, per dwg. # 5. The drawers shall open towards an expanded width CPR seat and be secured with locking stainless steel flush pull latches.	1	BI
50-10-0602		PRIMARY ACTION AREA	1	BI
50-10-0634		SECONDARY ACTION AREA	1	BI
50-10-0705		DRAWER - SLIDE-OUT / WRITING TABLE STREETSIDE INTERIOR	1	BI
50-20-0142	XS <	CABINET - FRONT WALL, LOWER #1 Lower front wall #1 shortened to accommodate transverse backboard compartment located below IPOS, per dwg. # 7. Cabinet shall be enclosed with a single right hinged .5" thick LEXAN door IPOS, per dwg. # 7. The door shall be secured with (2) two locking lever latches (1 upper/1lower located on left side). Rubber bumpers shall be provided on the cabinet. Ref #6424	1	BI
50-20-0381	<	CABINET - FRONT WALL, LOWER BELOW PDQ (SINGLE VENTED DOOR) Install one (1) side hinged vented aluminum door on the cabinet below the PDQ. (cabinet door opening towards the rear of the truck). Door to be secured with a chrome locking lever latch.	1	BI
50-20-0507		PASS THROUGH - CAB TO MODULE	1	BI

PART NO	S	DESCRIPTION	QTY	ID
50-30-0111		CABINET - RIGHT WALL, REAR WITH (1) DOOR FACING AISLE #1	1	BI
50-30-0131	XU <	Cabinet right wall, behind squad bench Install a shallow cabinet with restocking hinge, over the squad bench, (between the angled lights and the back pad) is shall contain a center divider with an adjustable shelf on each side. Build out the squad bench back pads to be flush with the face of the cabinet. There should be a minimum of 15" from the backpads to the edge of the bench cushion (extend the squad bench cushion if necessary).	1	
50-50-0102	<	ATTN SEAT - EVS HIBAC, INTEGRAL CHILD, SWIVEL BASE Seat, Attendant - EVS high back, integral child seat, installed on a swivel base,	1	BI
50-50-0324	<	CPR SEAT - WIDE - W/HINGED SEAT BOTTOM - STORAGE BELOW CPR seat (30 Inch wide) - lift up seat cushion, storage underneath An automatic latching fastener shall be installed to secure the CPR seat lid in the closed position. IPOS	1	BI
50-50-0512		SQUAD BENCH BASE STORAGE (COMPARTMENT #2)	1	BI
50-50-0522		SQUAD BENCH LID - WITH SHARPS AND TRASH ACCESS	1	BI
50-50-0541		HOLD OPENS - SQUAD BENCH LID - GAS CYLINDERS	1	BI
50-51-1001		CABINET CONSTRUCTION - INTERIOR - ALUMINUM	1	BI
50-51-1011	<	RECESSED ADJUSTABLE SHELF TRACK - CABINETS Install recessed adjustable shelf track in cabinets.	1	BI
50-51-2002	<	CABINET DOORS - CLEAR ACRYLIC Install Clear acrylic on cabinet doors IPOS	1	BI
50-51-3001	< >	CABINETS/ WALLS - POLYCHROMATIC COATING - MARBLE STONE Headliner, walls, cabinet faces, and cabinet interiors Zolatone color to be #20-63 Marble Stone	1	BI
50-51-4017	< >	COUNTER TOP - SOLID ACRYLIC - BLANCA GRANITE (WHITE) A Meganite solid acrylic counter top, Blanca Granite (White) #701, IPOS	1	BI
50-51-4056	<	COUNTER TOP ACCENT STRIPE- SOLID ACRYLIC - INDIGO GRANITE Install Indigo Granite (Dark Blue) #736 accent stripe.	1	BI
50-51-5013	<	UPHOLSTERY - RENAISSANCE - ICE BLUE #9207 All cushion, head pads and seating surfaces shall be covered with Spradling International "Renaissance" Ice Blue #9207	1	BI
50-51-6003	<	LONPLATE II, NON-SLIP EMBOSSED SM. GRID - GUNMETAL #424 The floor in the patient compartment shall be covered with Lonseal brand "Lonplate II" non-slip; small grid (embossed) Gunmetal #424,	1	BI

PART NO	S	DESCRIPTION	QTY	ID
50-60-0014	< >	ASPIRATOR / SUCTION - IMPACT #324 SELF-CONTAINED - RECESSED An Impact #324 suction system with built-in pump shall be recessed into the street side lower interior wall near the attendant seat. The recessed area to be large enough for the dealer to change out the suction unit to a SSCOR VX-2.	1	BI
50-60-0037		ASSIST HANDLES, (6) BLACK RUBBER	1	BI
50-60-0094	<	CLOCK - TRIN TEC, 8" 12/24 HR, QUARTZ BATTERY - FT SQ BENCH Install a Trin Tec battery operated, 12/24 hour clock on the curbside forward facing wall at the foot end of the squad bench	1	BI
50-60-0143	< >	COT SAFETY HOOK - STRYKER A Stryker cot rear capture / safety hook shall be provided and installed. Exact location and model to be determined at the pre-construction meeting.	1	BI
50-60-0155	<	COT FASTENER - STRYKER, TWO-POSITION, SIDE/CENTER Install A Stryker two position / side and center cot mount. IPOS	1	BI
50-60-0220		EMBLEMS / SIGNS - REAR PATIENT COMPARTMENT	1	BI
50-60-0256		EXHAUST VENTILATOR, 3-SPEED - MULTIPLEX ELECTRIC SYSTEM	1	BI
50-60-0300		FLOOR CONSTRUCTION- PATIENT COMPARTMENT, NON-WOOD COMPOSITE	1	BI
50-60-0301		FLOORING - COVE	1	BI
50-60-0325	< >	DELETE - GLOVE, DISPENSER - (3) BOX - CURBSIDE ABOVE DOOR Delete the glove box (3) dispenser above the curbside door.	1	BI
50-60-0340		GRAB RAIL, 1-1/4" DIAMETER, (96") OVER COT AREA	1	BI
50-60-0391		HEADLINER - REAR PATIENT COMPARTMENT	1	BI
50-60-0427	XS < >	HEAT/AC 125V/12V COMBINATION UNIT FT-454 W/TMC2007 CONDENSER Heat & A/C - FT-454 dual voltage 125v/12v unit includes CM3000 thermostat, 30 amp Super Auto Eject shoreline, and dual TMC 2007 condenser mounted on front of module.	1	BI
50-60-0434	XU <	Perko (2) hangers with velcro straps Install two (2) perko clips and straps. One (1) shall be installed on the streetside above the #2 cabinet per dwg. #5. One (1) shall be installed on the curbside wall above the squad bench per dwg. #6.	1	
50-60-0437	< >	I V HANGERS - CEILING RECESSED - CAST PRODUCTS #IV2008-1 (4) Two (2) additional Cast Products #IV2008-1 recessed, dual, ceiling I.V. hangers shall be provided and installed IATS. Locations to be determined at pre-construction meeting.	1	BI
50-60-0612	<	OXYGEN OUTLETS (3) WALL - OHIO MEDICAL TYPE Relocate one (1) oxygen outlet from the ceiling to the left wall	1	BI

PART NO	S	DESCRIPTION	QTY	ID
		forward action area next to the standard outlet.		
50-60-0629	<	FLOW METER, OXYGEN - THORPE STYLE One (1) Thorpe style oxygen flow meter shall be shipped loose with the completed vehicle. (Braun #15920)	1	BI
50-60-0640		OXYGEN SYSTEM, ELECTRIC - MULTIPLEX ELECTRIC SYSTEM	1	BI
50-60-0640	XU <	Oxygen electric system Install Electric Oxygen system IPOS manual (this includes bypass)	1	
50-60-0660		PADDED EDGING PROTECTION	1	BI
50-60-0661		PADS, HEAD AND BACK	1	BI
50-60-0681	XS <	RADIO SPEAKERS, STREETSIDE (OEM RADIO FADER CONTROL) Two (2) stereo speakers shall be installed rear head pad. The fader control for the rear speakers shall be in the cab radio.	1	BI
50-60-0700	XU <	Sharps in end of squad bench Install a sharps/waste drawer at end of bench IPOS. Drawer opens to aisle and secured with stainless steel flush pull locking latch, per dwg. # 6. (Extends the squad bench cushion.	1	
50-60-0709		SHARPS AND TRASH CONTAINERS - ACCESS THRU SQUAD BENCH LID	1	BI
50-60-0718		SQUAD BENCH FACE - VINYL FLOORING MATERIAL	1	BI
50-60-0730	<	DOOR PANELS - MODULE PASSAGE DOORS - FULL LENGTH ZOLATONE W/ACCESS PANELS Interior rear and curbside passage door panels to be full length aluminum, Zolatone sprayed to match interior color and contain removable latch access panel per dwg. # 6 & # 8. (Total 3).	1	BI
50-60-0740	XU <	Stainless steel lower door protection A stainless steel panel shall be installed on the interior lower portion of each passage door. The top of the stainless steel shall be installed beneath the upper door panel.	1	
50-60-0761		STAINLESS STEEL WALL PROTECTION - INTERIOR STREETSIDE	1	BI
50-60-0820		TURTLE TILE - SKID-RESISTANT MAT, CURBSIDE STEPWELL	1	BI
60-01-0001		PPG PAINT PROCEDURE	1	BI
60-01-0003		CLEAR COATING - MODULE PAINT	1	BI
60-01-0004	>	BUFFING, PAINT - MODULE	1	BI
60-10-0110	XS < >	PAINT MODULE ALL ONE SOLID COLOR, PLUS CLEAR COAT The entire module shall be sprayed one-color and then clear coated. The PPG paint code is 911659 Red.	1	BI

PART NO	S	DESCRIPTION	QTY	ID
		Paint module roof, OEM white over the roof radius to drip rail level (no drip rails), per photo Ref. Unit # 6424		
60-10-0170	< >	PAINT BOTTOM HALF OF CAB ONLY The bottom half of the cab shall be painted in an alternate color. The balance of the cab shall be painted OEM white in color. The PPG paint code shall be provided at the pre-construction meeting.	1	BI
60-20-0303	<	CHEVRON STRIPING - PERIMETER - NO DOORS Red/Yellow Reflexite chevron striping 6" wide shall be installed on the perimeter of the rear module, not on the doors.	1	BI
60-25-0101	<	BLACK REFLECTIVE MATERIAL IN RUB RAILS Install black reflective material in rub rails.	1	BI
60-30-0200		DOOR REFLECTIVITY	1	BI
60-SP-0001	XS < >	PAINT AND GRAPHICS - SPECIAL OPTION please use graphics and paint scheme same as unit #6424 Paint module roof OEM white over the roof radius to drip rail level (no drip rails) per photo #6424	1	BI
60-SP-0001	XU <	Paint and graphics Duplicate unit #6424	1	
60-SP-0002	XS < >	PAINT AND GRAPHICS - SPECIAL OPTION Paint modular roof white	1	BI
60-SP-0003	XS < >	PAINT AND GRAPHICS - SPECIAL OPTION Paint, chassis OEM Red / White roof Cab paint by OEM chassis manufacturer. Bright red chassis, per chassis specifications, with OEM white cab roof and "A/B" Pillars. Ref Unit 6424 photo	1	BI
80-10-0101		KKK-A-1822F COMPLIANCE	1	BI
80-20-0001	<	VEHICLE MANUALS (1) PACKAGE SET One (1) Delivery Manual Package shall be supplied with the vehicle, and shall include the following items: Ambulance manufacturer parts, service and operation manuals OEM chassis owner's guide Complete 12 VDC and 125 VAC wiring schematics for all included standard and optional systems Multiplex Electrical system programming - electronic media	1	BI

PART NO	S	DESCRIPTION	QTY	ID
90-10-0004		WARRANTIES	1	BI
PR-CD-0000	XU	Braun concession	1	
SE-99-0002	XU <	Assist handles Install (5) Austin # AE9-01228 polyurethane door assist handles IPOS. Two (2) at rear doors, two (2) at curbside door, and one (1) on curbside door, per dwgs.	1	
SP-99-0001	XU <	Pre-wires (3) 12V Three (3) 12v prewires shall be installed in the module. One (1) each at the cab floor console and one (1) at the ACP in the primary action area, and one (1) for the thermal imaging camera above the console.	1	
SP-99-4000	XU <	Cole Hersee switch Install a battery switch, Cole Hersee with cover plate left of drivers seat. Battery switch to control chassis and module - items wired hot, must stay hot and OEM radio to retain memory	1	
SP-99-4001	XU <	Buss Bar Install one (1) 30 Buss bar in the PDQ IATS.	1	
SP-99-4011	XU <	Cabinet , Drawer Curbside (2) Install (2) pull out drawers at the rearward end of the squad bench opening towards aisle. Drawers, per dwg. dimensions. Drawers secured with stainless steel Southco locking latches and an additional cylinder key lock (1) # KV-70 on each drawer IATS, per dwg. # 6. Both drawers to lock in the out position using locking drawer slides. Dimensions revised from unit # 6424	1	
SP-99-4013	XU <	Cabinet , Drop down, pass thru Install a cabinet below pass through IATS, per dwg. # 7. Cabinet enclosed with drop down LEXAN door secured with black locking lever latch. Cabinet topped with Meganite counter with a standard 1.5" lips. Color to match the streetside counter top.	1	

6477

Prepared By:
administrator
Bob Cook-Tom Ahl Dealerships
2525 Allentown Road
Lima, OH 45805
Phone: (419) 303-1905
Fax: (419) 228-3064
Email: bobcook@tomahl.com

2014 Fleet/Non-Retail Ram 4500 2WD Reg Cab 192" WB 108" CA SLT DP4

SELECTED MODEL & OPTIONS

SELECTED MODEL - 2014 Fleet/Non-Retail DP4L65 2WD Reg Cab 192" WB 108" CA SLT

<u>Code</u>	<u>Description</u>	<u>MSRP</u>
DP4L65	2014 Ram 4500 2WD Reg Cab 192" WB 108" CA SLT	

SELECTED VEHICLE COLORS - 2014 Fleet/Non-Retail DP4L65 2WD Reg Cab 192" WB 108" CA SLT

<u>Code</u>	<u>Description</u>
-	Interior: No color has been selected.
-	Exterior 1: No color has been selected.
-	Exterior 2: No color has been selected.

SELECTED OPTIONS - 2014 Fleet/Non-Retail DP4L65 2WD Reg Cab 192" WB 108" CA SLT

CATEGORY

<u>Code</u>	<u>Description</u>	<u>MSRP</u>
EMISSIONS		
NAS	50 STATE EMISSIONS	\$0.00
ENGINE		
ETK	ENGINE: 6.7L I6 CUMMINS TURBO DIESEL -Inc: 4.10 Rear Axle Ratio, Cummins Turbo Diesel Badge, 87 mph Maximum Speed, Current Generation Engine Controller, Diesel Exhaust Brake, Selective Catalytic Reduction (Urea), RAM Active Air (With the selection of NAS, requires XKH)	
TRANSMISSION		
DF2	TRANSMISSION: 6-SPEED AUTOMATIC AISIN AS69RC HD (Requires ETK)	
CPOS PKG		

Report content is based on current data version referenced. Any performance-related calculations are offered solely as guidelines. Actual unit performance will depend on your operating conditions.

GM AutoBook, Data Version: 292.0, Data updated 8/27/2013
© Copyright 1986-2012 Chrome Data Solutions, LP. All rights reserved.

Customer File:

Prepared By:
 administrator
 Bob Cook-Tom Ahl Dealerships
 2525 Allentown Road
 Lima, OH 45805
 Phone: (419) 303-1905
 Fax: (419) 228-3064
 Email: bobcook@tomahl.com

2014 Fleet/Non-Retail Ram 4500 2WD Reg Cab 192" WB 108" CA SLT DP4

SELECTED MODEL & OPTIONS

SELECTED OPTIONS - 2014 Fleet/Non-Retail DP4L65 2WD Reg Cab 192" WB 108" CA SLT

CATEGORY

<u>Code</u>	<u>Description</u>	<u>MSRP</u>
CPOS PKG 29G	QUICK ORDER PACKAGE 29G -inc: Engine: 6.7L I6 Cummins Turbo Diesel, Transmission: 6-Speed Automatic Aisin AS69RC HD, Cloth 40/20/40 Bench Seat, Overhead Console, Power Black Trailer Tow Mirrors, Front 1-Touch Down Power Windows, Body Insulation, Exterior Mirrors w/Heating Element, Power Locks, Front Floor Mats, Bright Front Bumper, Temperature & Compass Gauge, Exterior Mirrors Courtesy Lamps, 1-Year SIRIUSXM Radio Service, Color Keyed Instrument Panel Bezel, Exterior Mirrors w/Supplemental Signals, For More Info, Call 888-539-7474, SLT Badge, Premium Vinyl Door Trim w/Map Pocket, Remote Keyless Entry, Bright Grille, Traveler/Mini Trip Computer, 6 Speakers *Upon selection of this pkg, the cost of powertrain components will be added* (Requires DF2 and ETK)	
AXLE RATIO DMF	4.10 REAR AXLE RATIO (Requires ETK)	INC
WHEELS WP3	WHEELS: 19.5" X 6.0" STEEL (STD)	\$0.00
TIRES TUY	TIRES: 225/70R19.5G ALL POSITION FT/RR TRACTION	
PRIMARY PAINT PR4	Flame Red	\$0.00
PAINT SCHEME	STANDARD PAINT	\$0.00
SEAT TYPE MAX3	DIESEL GRAY/BLACK, CLOTH 40/20/40 BENCH SEAT, <i>Power 10 way driver seat</i>	
GVWR Z4A	GVWR: 16,500 LBS (STD)	\$0.00
ADDITIONAL EQUIPMENT ADE	COLD WEATHER GROUP -inc: Engine Block Heater, Winter Front Grille Cover (Requires ETK)	

Report content is based on current data version referenced. Any performance-related calculations are offered solely as guidelines. Actual unit performance will depend on your operating conditions.

GM AutoBook, Data Version: 292.0, Data updated 8/27/2013
 © Copyright 1986-2012 Chrome Data Solutions, LP. All rights reserved.
 Customer File:

Prepared By:
 administrator
 Bob Cook-Tom Ahl Dealerships
 2525 Allentown Road
 Lima, OH 45805
 Phone: (419) 303-1905
 Fax: (419) 228-3064
 Email: bobcook@tomahl.com

2014 Fleet/Non-Retail Ram 4500 2WD Reg Cab 192" WB 108" CA SLT DP4

SELECTED MODEL & OPTIONS

SELECTED OPTIONS - 2014 Fleet/Non-Retail DP4L65 2WD Reg Cab 192" WB 108" CA SLT

CATEGORY

Code	Description	MSRP
ADDITIONAL EQUIPMENT		
XF7	DUAL ALTERNATORS RATED AT 440 AMPS -Inc: 220 Amp Alternator (Requires ETK)	
AH2	AMBULANCE PREP GROUP -Inc: Electronic Monitoring Module, Voltage Monitoring Auto Idle Up Sys	
BAJ	220 AMP ALTERNATOR	INC
NHK	ENGINE BLOCK HEATER	INC
TBB	FULL SIZE SPARE TIRE -Inc: 19.5" Steel Spare Wheel	
GFD	REAR SLIDING WINDOW	
CKJ	BLACK VINYL FLOOR COVERING	\$0.00
XXS	ELECTRONIC MONITORING MODULE (With the selection of RCK, requires AH2) (With the selection of RA4, requires AH2)	INC
XF6	VOLTAGE MONITORING AUTO IDLE UP SYS	INC
CJT	DELETE FRONT CENTER SEAT *CREDIT* (With the selection of M9U1, requires AS8) (With the selection of V9U1, requires AS8) (With the selection of MJX8, requires AS8) (With the selection of MJU1, requires AS8)	

OPTIONS TOTAL

LM1 Day time running lights
 WP4 Aluminum wheels
 RR4 Flame Red
 M9XB Power driver seat

Report content is based on current data version referenced. Any performance-related calculations are offered solely as guidelines. Actual unit performance will depend on your operating conditions.

GM AutoBook, Data Version: 292.0, Data updated 8/27/2013
 © Copyright 1986-2012 Chrome Data Solutions, LP. All rights reserved.
 Customer File: