

**RESOLUTION NO. 2014-7**  
**RESOLUTION OF THE BOARD OF COUNTY**  
**COMMISSIONERS OF ST. JOHNS COUNTY, FLORIDA**  
**APPROVING A PLAT FOR SAMARA LAKES PARCEL D PHASE ONE**

**WHEREAS, D.R. HORTON,INC.-JACKSONVILLE, A DELAWARE CORPORATION, AS OWNER,** has applied to the Board of County Commissioners of St. Johns County, Florida for approval to record a plat known as **Samara Lakes Parcel D Phase One.**

**NOW, THEREFORE BE IT RESOLVED BY THE BOARD OF COUNTY COMMISSIONERS OF ST. JOHNS COUNTY, FLORIDA,** as follows:

**Section 1.** The above-described subdivision plat and its dedicated areas depicted thereon are conditionally approved and accepted by the Board of County Commissioners of St. Johns County, Florida subject to Sections 2, 3, 4, 5 and 6.

**Section 2.** A Required Improvements Bond is not required.

**Section 3.** A Required Improvements Bond will not be required for maintenance.

**Section 4.** The approval and acceptance described in Section 1 shall not take effect until the Clerk has received a title opinion, certificate, or policy pertaining to the real property that is the subject of the aforementioned subdivision plat which opinion, certificate or policy is in a form acceptable to the County Attorney or Assistant County Attorney.

**Section 5.** The Clerk is instructed to file and record the consent and joinder (s) to the plat executed by all mortgages identified in the title opinion or certificate of the title in Section 4.

**Section 6.** The approval and acceptance described in Section 1 shall not take effect until the plat has been signed by each of the following departments, person or offices:

- a) Chairman or Vice-Chairman of the Board of County Commissioners of St. Johns County, Florida;
- b) Office of the County Attorney;
- c) County Growth Management Department;
- d) Office of the County Surveyor; and
- e) Clerk of Courts.

The Clerk shall not sign or accept the Plat for recording until it has been signed by each of the above persons or entities described in a) through d) above. If the plat is not signed and accepted by the Clerk for recording within 14 days from the date hereof, then the above-described conditional approval shall automatically terminate. If the plat is signed by the Clerk on or before such time, the conditions described herein shall be deemed to have been met.

**ADOPTED** by the Board of County Commissioners of St. Johns County, Florida, this 21<sup>st</sup> day of January, 2014.

**BOARD OF COUNTY COMMISSIONERS  
OF ST. JOHNS COUNTY, FLORIDA**

BY: \_\_\_\_\_

*John H. Morris*  
John H. Morris, Chair

**ATTEST:** Cheryl Strickland

*Ron Halterman*  
\_\_\_\_\_

Deputy Clerk

**RENDITION DATE** 1/23/14



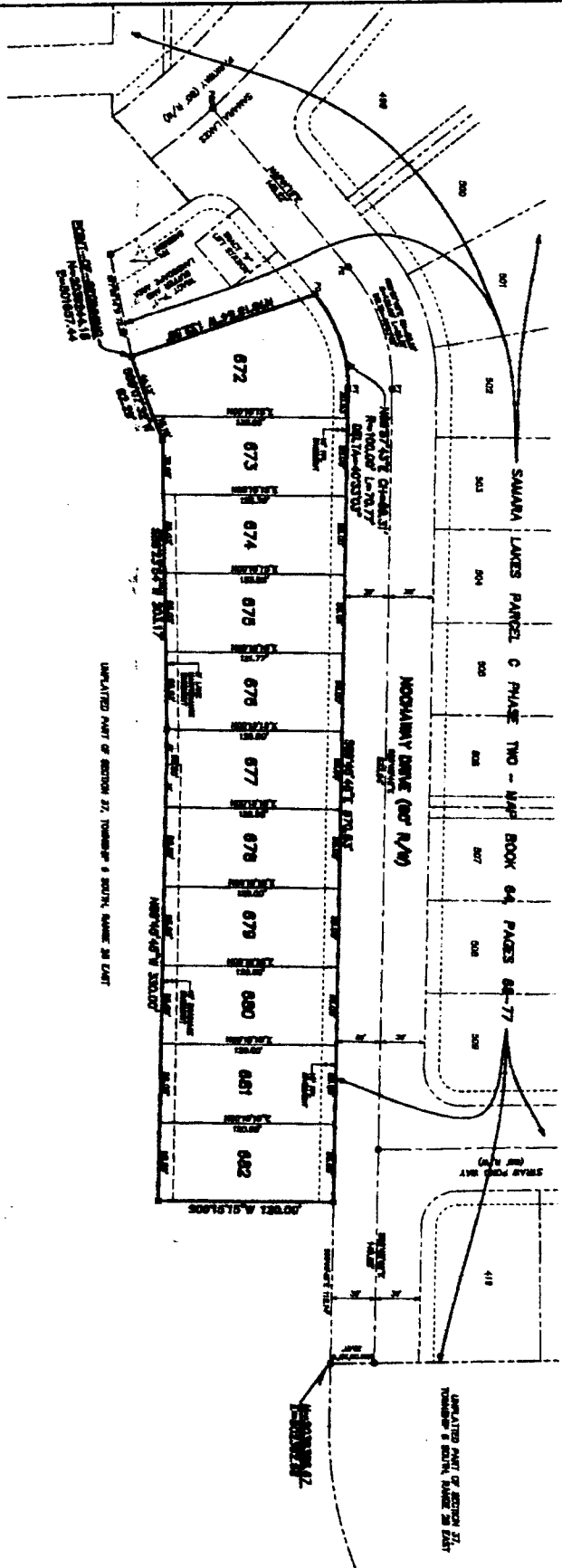
# Attachment 2

## Plat Map

**SAMARA LAKES PARCEL D PHASE ONE**  
 A PART OF THE FACETTI DONATION, SECTION 37, ALL IN TOWNSHIP 6 SOUTH, RANGE 28 EAST, ST. JOHNS COUNTY, FLORIDA

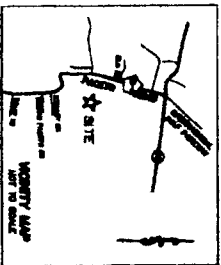
MAP BOOK      PAGE     

SHEET 2 OF 2



NOTICE: THIS PLAN, AS RECORDED IN THE OFFICIAL RECORDS OF THE COUNTY CLERK OF ST. JOHNS COUNTY, FLORIDA, IS THE ORIGINAL COPY OF THE SAME. ANY OTHER COPIES OF THIS PLAN, OR ANY PART THEREOF, WHICH MAY BE REPRODUCED OR OTHERWISE COPIED OR REPRODUCED IN ANY MANNER, SHALL BE VOID AND OF NO EFFECT. THE ORIGINAL COPY OF THIS PLAN IS ON FILE IN THE OFFICE OF THE COUNTY CLERK OF ST. JOHNS COUNTY, FLORIDA, AT SECTION 1772001 (27), FLORIDA DIVISION.

- NOTES:
1. SHOWN ARE THE BOUNDARIES OF THE DONATION, AS SHOWN IN THE ORIGINAL RECORDS OF THE COUNTY CLERK OF ST. JOHNS COUNTY, FLORIDA.
  2. THIS PLAN, AS RECORDED, IS THE ORIGINAL COPY OF THE SAME. ANY OTHER COPIES OF THIS PLAN, OR ANY PART THEREOF, WHICH MAY BE REPRODUCED OR OTHERWISE COPIED OR REPRODUCED IN ANY MANNER, SHALL BE VOID AND OF NO EFFECT. THE ORIGINAL COPY OF THIS PLAN IS ON FILE IN THE OFFICE OF THE COUNTY CLERK OF ST. JOHNS COUNTY, FLORIDA, AT SECTION 1772001 (27), FLORIDA DIVISION.
  3. THIS PLAN, AS RECORDED, IS THE ORIGINAL COPY OF THE SAME. ANY OTHER COPIES OF THIS PLAN, OR ANY PART THEREOF, WHICH MAY BE REPRODUCED OR OTHERWISE COPIED OR REPRODUCED IN ANY MANNER, SHALL BE VOID AND OF NO EFFECT. THE ORIGINAL COPY OF THIS PLAN IS ON FILE IN THE OFFICE OF THE COUNTY CLERK OF ST. JOHNS COUNTY, FLORIDA, AT SECTION 1772001 (27), FLORIDA DIVISION.



LINE NO.	DESCRIPTION
1	SECTION 37, TOWNSHIP 6 SOUTH, RANGE 28 EAST
2	SECTION 37, TOWNSHIP 6 SOUTH, RANGE 28 EAST
3	SECTION 37, TOWNSHIP 6 SOUTH, RANGE 28 EAST
4	SECTION 37, TOWNSHIP 6 SOUTH, RANGE 28 EAST
5	SECTION 37, TOWNSHIP 6 SOUTH, RANGE 28 EAST
6	SECTION 37, TOWNSHIP 6 SOUTH, RANGE 28 EAST
7	SECTION 37, TOWNSHIP 6 SOUTH, RANGE 28 EAST
8	SECTION 37, TOWNSHIP 6 SOUTH, RANGE 28 EAST
9	SECTION 37, TOWNSHIP 6 SOUTH, RANGE 28 EAST
10	SECTION 37, TOWNSHIP 6 SOUTH, RANGE 28 EAST
11	SECTION 37, TOWNSHIP 6 SOUTH, RANGE 28 EAST
12	SECTION 37, TOWNSHIP 6 SOUTH, RANGE 28 EAST
13	SECTION 37, TOWNSHIP 6 SOUTH, RANGE 28 EAST
14	SECTION 37, TOWNSHIP 6 SOUTH, RANGE 28 EAST
15	SECTION 37, TOWNSHIP 6 SOUTH, RANGE 28 EAST
16	SECTION 37, TOWNSHIP 6 SOUTH, RANGE 28 EAST
17	SECTION 37, TOWNSHIP 6 SOUTH, RANGE 28 EAST
18	SECTION 37, TOWNSHIP 6 SOUTH, RANGE 28 EAST
19	SECTION 37, TOWNSHIP 6 SOUTH, RANGE 28 EAST
20	SECTION 37, TOWNSHIP 6 SOUTH, RANGE 28 EAST
21	SECTION 37, TOWNSHIP 6 SOUTH, RANGE 28 EAST
22	SECTION 37, TOWNSHIP 6 SOUTH, RANGE 28 EAST
23	SECTION 37, TOWNSHIP 6 SOUTH, RANGE 28 EAST
24	SECTION 37, TOWNSHIP 6 SOUTH, RANGE 28 EAST
25	SECTION 37, TOWNSHIP 6 SOUTH, RANGE 28 EAST
26	SECTION 37, TOWNSHIP 6 SOUTH, RANGE 28 EAST
27	SECTION 37, TOWNSHIP 6 SOUTH, RANGE 28 EAST
28	SECTION 37, TOWNSHIP 6 SOUTH, RANGE 28 EAST
29	SECTION 37, TOWNSHIP 6 SOUTH, RANGE 28 EAST
30	SECTION 37, TOWNSHIP 6 SOUTH, RANGE 28 EAST
31	SECTION 37, TOWNSHIP 6 SOUTH, RANGE 28 EAST
32	SECTION 37, TOWNSHIP 6 SOUTH, RANGE 28 EAST
33	SECTION 37, TOWNSHIP 6 SOUTH, RANGE 28 EAST
34	SECTION 37, TOWNSHIP 6 SOUTH, RANGE 28 EAST
35	SECTION 37, TOWNSHIP 6 SOUTH, RANGE 28 EAST
36	SECTION 37, TOWNSHIP 6 SOUTH, RANGE 28 EAST
37	SECTION 37, TOWNSHIP 6 SOUTH, RANGE 28 EAST
38	SECTION 37, TOWNSHIP 6 SOUTH, RANGE 28 EAST
39	SECTION 37, TOWNSHIP 6 SOUTH, RANGE 28 EAST
40	SECTION 37, TOWNSHIP 6 SOUTH, RANGE 28 EAST
41	SECTION 37, TOWNSHIP 6 SOUTH, RANGE 28 EAST
42	SECTION 37, TOWNSHIP 6 SOUTH, RANGE 28 EAST
43	SECTION 37, TOWNSHIP 6 SOUTH, RANGE 28 EAST
44	SECTION 37, TOWNSHIP 6 SOUTH, RANGE 28 EAST
45	SECTION 37, TOWNSHIP 6 SOUTH, RANGE 28 EAST
46	SECTION 37, TOWNSHIP 6 SOUTH, RANGE 28 EAST
47	SECTION 37, TOWNSHIP 6 SOUTH, RANGE 28 EAST
48	SECTION 37, TOWNSHIP 6 SOUTH, RANGE 28 EAST
49	SECTION 37, TOWNSHIP 6 SOUTH, RANGE 28 EAST
50	SECTION 37, TOWNSHIP 6 SOUTH, RANGE 28 EAST
51	SECTION 37, TOWNSHIP 6 SOUTH, RANGE 28 EAST
52	SECTION 37, TOWNSHIP 6 SOUTH, RANGE 28 EAST
53	SECTION 37, TOWNSHIP 6 SOUTH, RANGE 28 EAST
54	SECTION 37, TOWNSHIP 6 SOUTH, RANGE 28 EAST
55	SECTION 37, TOWNSHIP 6 SOUTH, RANGE 28 EAST
56	SECTION 37, TOWNSHIP 6 SOUTH, RANGE 28 EAST
57	SECTION 37, TOWNSHIP 6 SOUTH, RANGE 28 EAST
58	SECTION 37, TOWNSHIP 6 SOUTH, RANGE 28 EAST
59	SECTION 37, TOWNSHIP 6 SOUTH, RANGE 28 EAST
60	SECTION 37, TOWNSHIP 6 SOUTH, RANGE 28 EAST
61	SECTION 37, TOWNSHIP 6 SOUTH, RANGE 28 EAST
62	SECTION 37, TOWNSHIP 6 SOUTH, RANGE 28 EAST
63	SECTION 37, TOWNSHIP 6 SOUTH, RANGE 28 EAST
64	SECTION 37, TOWNSHIP 6 SOUTH, RANGE 28 EAST
65	SECTION 37, TOWNSHIP 6 SOUTH, RANGE 28 EAST
66	SECTION 37, TOWNSHIP 6 SOUTH, RANGE 28 EAST
67	SECTION 37, TOWNSHIP 6 SOUTH, RANGE 28 EAST
68	SECTION 37, TOWNSHIP 6 SOUTH, RANGE 28 EAST
69	SECTION 37, TOWNSHIP 6 SOUTH, RANGE 28 EAST
70	SECTION 37, TOWNSHIP 6 SOUTH, RANGE 28 EAST
71	SECTION 37, TOWNSHIP 6 SOUTH, RANGE 28 EAST
72	SECTION 37, TOWNSHIP 6 SOUTH, RANGE 28 EAST
73	SECTION 37, TOWNSHIP 6 SOUTH, RANGE 28 EAST
74	SECTION 37, TOWNSHIP 6 SOUTH, RANGE 28 EAST
75	SECTION 37, TOWNSHIP 6 SOUTH, RANGE 28 EAST
76	SECTION 37, TOWNSHIP 6 SOUTH, RANGE 28 EAST
77	SECTION 37, TOWNSHIP 6 SOUTH, RANGE 28 EAST
78	SECTION 37, TOWNSHIP 6 SOUTH, RANGE 28 EAST
79	SECTION 37, TOWNSHIP 6 SOUTH, RANGE 28 EAST
80	SECTION 37, TOWNSHIP 6 SOUTH, RANGE 28 EAST
81	SECTION 37, TOWNSHIP 6 SOUTH, RANGE 28 EAST
82	SECTION 37, TOWNSHIP 6 SOUTH, RANGE 28 EAST
83	SECTION 37, TOWNSHIP 6 SOUTH, RANGE 28 EAST
84	SECTION 37, TOWNSHIP 6 SOUTH, RANGE 28 EAST
85	SECTION 37, TOWNSHIP 6 SOUTH, RANGE 28 EAST
86	SECTION 37, TOWNSHIP 6 SOUTH, RANGE 28 EAST
87	SECTION 37, TOWNSHIP 6 SOUTH, RANGE 28 EAST
88	SECTION 37, TOWNSHIP 6 SOUTH, RANGE 28 EAST
89	SECTION 37, TOWNSHIP 6 SOUTH, RANGE 28 EAST
90	SECTION 37, TOWNSHIP 6 SOUTH, RANGE 28 EAST
91	SECTION 37, TOWNSHIP 6 SOUTH, RANGE 28 EAST
92	SECTION 37, TOWNSHIP 6 SOUTH, RANGE 28 EAST
93	SECTION 37, TOWNSHIP 6 SOUTH, RANGE 28 EAST
94	SECTION 37, TOWNSHIP 6 SOUTH, RANGE 28 EAST
95	SECTION 37, TOWNSHIP 6 SOUTH, RANGE 28 EAST
96	SECTION 37, TOWNSHIP 6 SOUTH, RANGE 28 EAST
97	SECTION 37, TOWNSHIP 6 SOUTH, RANGE 28 EAST
98	SECTION 37, TOWNSHIP 6 SOUTH, RANGE 28 EAST
99	SECTION 37, TOWNSHIP 6 SOUTH, RANGE 28 EAST
100	SECTION 37, TOWNSHIP 6 SOUTH, RANGE 28 EAST



**CLARKE & ASSOCIATES, INC.**  
 PROFESSIONAL LAND SURVEYORS  
 1000 W. W. BARNETT BLVD.  
 JACKSONVILLE, FLORIDA 32217  
 PHONE: (904) 384-2823