

RESOLUTION NO. 2015- 13  
RESOLUTION OF THE BOARD OF COUNTY  
COMMISSIONERS OF ST. JOHNS COUNTY, FLORIDA  
APPROVING A PLAT FOR KENDALL CREEK.

WHEREAS, GREENBRIAR HOLDINGS, LLC, A FLORIDA LIMITED LIABILITY CORPORATION, AS OWNER, has applied to the Board of County Commissioners of St. Johns County, Florida for approval to record a plat known as Kendall Creek.

NOW, THEREFORE BE IT RESOLVED BY THE BOARD OF COUNTY COMMISSIONERS OF ST. JOHNS COUNTY, FLORIDA, as follows:

**Section 1.** The above-described subdivision plat and its dedicated areas depicted thereon are conditionally approved and accepted by the Board of County Commissioners of St. Johns County, Florida subject to Sections 2, 3, 4, 5 and 6.

**Section 2.** A Required Improvement Bond in the amount of \$529,604.66 has been filed with the Clerk of Courts Office.

**Section 3.** A Required Improvement Bond in the amount of \$163,300.80 will be required for maintenance.

**Section 4.** The approval and acceptance described in Section 1 shall not take effect until the Clerk has received a title opinion, certificate, or policy pertaining to the real property that is the subject of the forenamed subdivision plat which opinion, certificate or policy is in a form acceptable to the County Attorney or Assistant County Attorney.

**Section 5.** The Clerk is instructed to file and record the consent and joinder (s) to the plat executed by all mortgages identified in the title opinion or certificate of the title in Section 4.

**Section 6.** The approval and acceptance described in Section 1 shall not take effect until the plat has been signed by each of the following departments, person or offices:

- a) Chairman or Vice-Chairman of the Board of County Commissioners of St. Johns County, Florida;

- b) Office of the County Attorney;
- c) County Growth Management Department;
- d) Office of the County Surveyor; and
- e) Clerk of Courts.

The Clerk shall not sign or accept the Plat for recording until it has been signed by each of the above persons or entities described in a) through d) above. If the plat is not signed and accepted by the Clerk for recording within 14 days from the date hereof, then the above-described conditional approval shall automatically terminate. If the plat is signed by the Clerk on or before such time, the conditions described herein shall be deemed to have been met.

ADOPTED by the Board of County Commissioners of St. Johns County, Florida, this 20<sup>th</sup> day of January, 2015.

**BOARD OF COUNTY COMMISSIONERS  
OF ST. JOHNS COUNTY, FLORIDA**

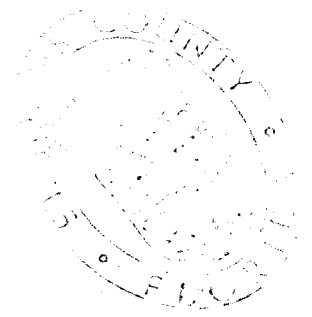
BY: \_\_\_\_\_

  
**Priscilla L. Bennett, Chair**

**ATTEST: Cheryl Strickland**



**Deputy Clerk**



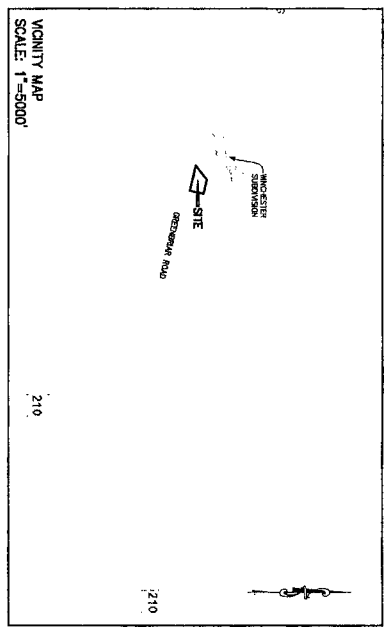
RENDITION DATE 1/21/15

# KENDALL CREEK

A PORTION OF THE FRANCIS PHILIP PATIO GRANT, SECTION 44, TOWNSHIP 6 SOUTH, RANGE 26 EAST, TOGETHER WITH A PORTION OF SECTION 39, TOWNSHIP 5 SOUTH, RANGE 27 EAST, ST. JOHNS COUNTY, FLORIDA

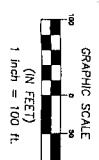
## MAP BOOK PAGE

SHEET 2 OF 7



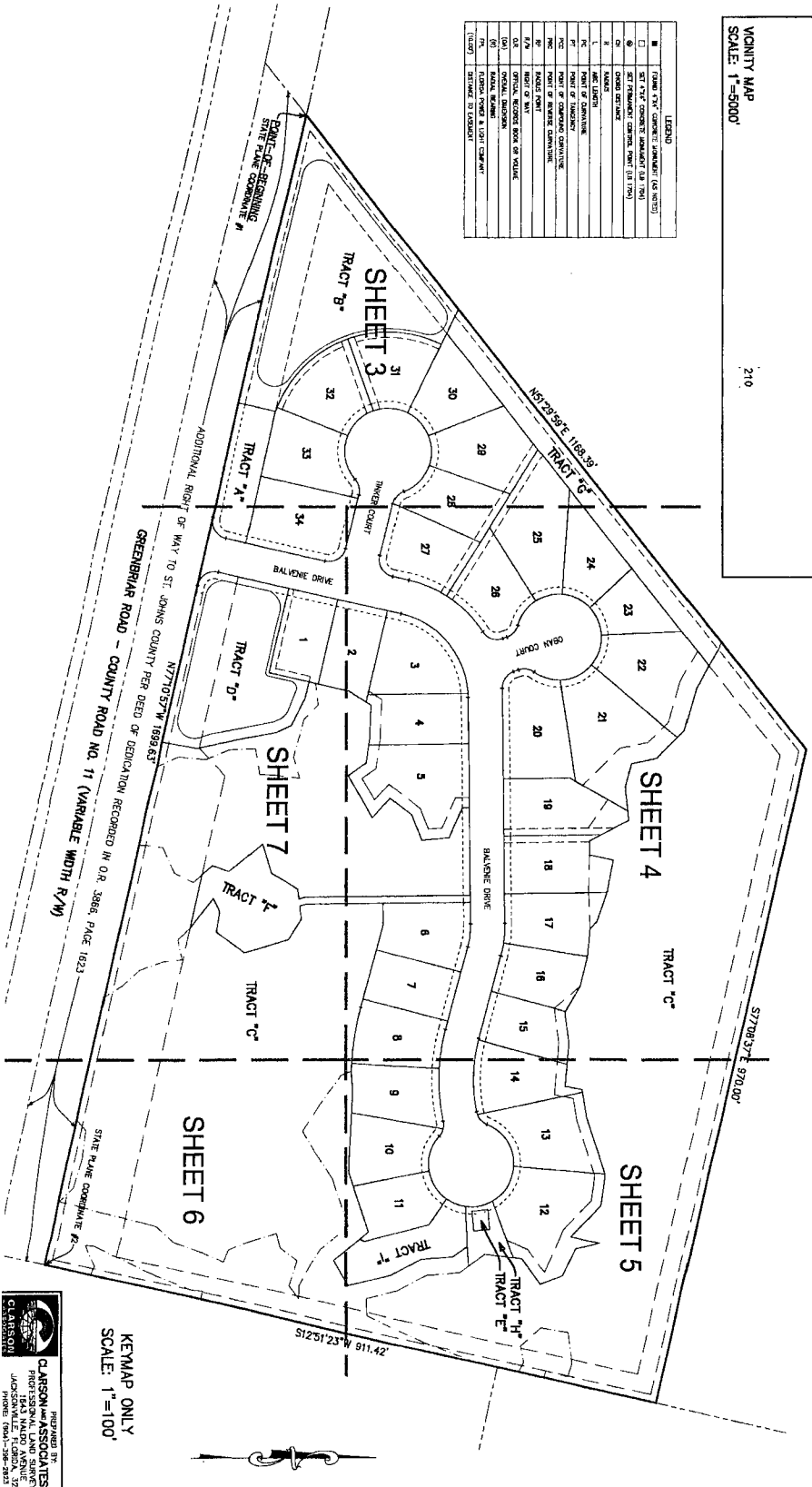
STATE PLANE COORDINATES TABLE

POINT	NORTHING	EASTING	DESCRIPTION
1	382424	448433	TRAIL ENDPOINT - POINT OF BEGINNING
2	3829732	448794	SET BACKPOINT - SET BACK CORNER



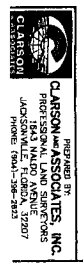
LEGEND

■	TRAIL TYPE CORNER: JUNCTION (AS NOTED)
□	SET BACK CORNER: ENDPOINT (AS NOTED)
○	TRAIL CENTER: POINT OF BEGINNING (AS NOTED)
○	TRAIL CENTER: POINT OF ENDING (AS NOTED)
○	TRAIL CENTER: POINT OF BEGINNING AND ENDING (AS NOTED)
○	TRAIL CENTER: POINT OF BEGINNING (AS NOTED)
○	TRAIL CENTER: POINT OF ENDING (AS NOTED)
○	TRAIL CENTER: POINT OF BEGINNING AND ENDING (AS NOTED)
○	TRAIL CENTER: POINT OF BEGINNING (AS NOTED)
○	TRAIL CENTER: POINT OF ENDING (AS NOTED)
○	TRAIL CENTER: POINT OF BEGINNING AND ENDING (AS NOTED)
○	TRAIL CENTER: POINT OF BEGINNING (AS NOTED)
○	TRAIL CENTER: POINT OF ENDING (AS NOTED)
○	TRAIL CENTER: POINT OF BEGINNING AND ENDING (AS NOTED)
○	TRAIL CENTER: POINT OF BEGINNING (AS NOTED)
○	TRAIL CENTER: POINT OF ENDING (AS NOTED)
○	TRAIL CENTER: POINT OF BEGINNING AND ENDING (AS NOTED)



- NOTES:
1. BOUNDARY BEARING: WITHIN 7" FOR THE NORTHERLY, 1/4" LINE OF GREENBRIAR ROAD PER O.R. 3886, PAGE 1277.
  2. STATE PLANE COORDINATES SHOWN WITH VALUES IN FEET AND DECIMALS HEREON BASED ON NORTH AMERICAN DATUM 1983. POINTS LISTED ARE VALUES SHOWN FOR THE SURVEYED POINTS ONLY.
  3. THE SURVEYED POINTS WERE OBSERVED BY THE SURVEYOR AND THE COORDINATES WERE CALCULATED BY THE SURVEYOR. THE COORDINATES WERE CHECKED BY THE SURVEYOR AND THE COORDINATES WERE CHECKED BY THE SURVEYOR. THE COORDINATES WERE CHECKED BY THE SURVEYOR AND THE COORDINATES WERE CHECKED BY THE SURVEYOR.
  4. THE SURVEYOR'S REPORT TO BE FILED WITH THE DEPARTMENT OF REVENUE, TALLAHASSEE, FLORIDA, IS SUBJECT TO THE REVIEW OF THE DEPARTMENT OF REVENUE.
  5. THE DEPARTMENT OF REVENUE SHALL REVIEW THE REPORT TO BE FILED WITH THE DEPARTMENT OF REVENUE, TALLAHASSEE, FLORIDA, IS SUBJECT TO THE REVIEW OF THE DEPARTMENT OF REVENUE.
  6. THE SURVEYOR'S REPORT TO BE FILED WITH THE DEPARTMENT OF REVENUE, TALLAHASSEE, FLORIDA, IS SUBJECT TO THE REVIEW OF THE DEPARTMENT OF REVENUE.
  7. THE SURVEYOR'S REPORT TO BE FILED WITH THE DEPARTMENT OF REVENUE, TALLAHASSEE, FLORIDA, IS SUBJECT TO THE REVIEW OF THE DEPARTMENT OF REVENUE.
  8. THE SURVEYOR'S REPORT TO BE FILED WITH THE DEPARTMENT OF REVENUE, TALLAHASSEE, FLORIDA, IS SUBJECT TO THE REVIEW OF THE DEPARTMENT OF REVENUE.
  9. THE SURVEYOR'S REPORT TO BE FILED WITH THE DEPARTMENT OF REVENUE, TALLAHASSEE, FLORIDA, IS SUBJECT TO THE REVIEW OF THE DEPARTMENT OF REVENUE.
  10. THE SURVEYOR'S REPORT TO BE FILED WITH THE DEPARTMENT OF REVENUE, TALLAHASSEE, FLORIDA, IS SUBJECT TO THE REVIEW OF THE DEPARTMENT OF REVENUE.
  11. THE SURVEYOR'S REPORT TO BE FILED WITH THE DEPARTMENT OF REVENUE, TALLAHASSEE, FLORIDA, IS SUBJECT TO THE REVIEW OF THE DEPARTMENT OF REVENUE.
  12. THE SURVEYOR'S REPORT TO BE FILED WITH THE DEPARTMENT OF REVENUE, TALLAHASSEE, FLORIDA, IS SUBJECT TO THE REVIEW OF THE DEPARTMENT OF REVENUE.
  13. THE SURVEYOR'S REPORT TO BE FILED WITH THE DEPARTMENT OF REVENUE, TALLAHASSEE, FLORIDA, IS SUBJECT TO THE REVIEW OF THE DEPARTMENT OF REVENUE.
  14. THE SURVEYOR'S REPORT TO BE FILED WITH THE DEPARTMENT OF REVENUE, TALLAHASSEE, FLORIDA, IS SUBJECT TO THE REVIEW OF THE DEPARTMENT OF REVENUE.
  15. THE SURVEYOR'S REPORT TO BE FILED WITH THE DEPARTMENT OF REVENUE, TALLAHASSEE, FLORIDA, IS SUBJECT TO THE REVIEW OF THE DEPARTMENT OF REVENUE.
  16. THE SURVEYOR'S REPORT TO BE FILED WITH THE DEPARTMENT OF REVENUE, TALLAHASSEE, FLORIDA, IS SUBJECT TO THE REVIEW OF THE DEPARTMENT OF REVENUE.
  17. THE SURVEYOR'S REPORT TO BE FILED WITH THE DEPARTMENT OF REVENUE, TALLAHASSEE, FLORIDA, IS SUBJECT TO THE REVIEW OF THE DEPARTMENT OF REVENUE.
  18. THE SURVEYOR'S REPORT TO BE FILED WITH THE DEPARTMENT OF REVENUE, TALLAHASSEE, FLORIDA, IS SUBJECT TO THE REVIEW OF THE DEPARTMENT OF REVENUE.
  19. THE SURVEYOR'S REPORT TO BE FILED WITH THE DEPARTMENT OF REVENUE, TALLAHASSEE, FLORIDA, IS SUBJECT TO THE REVIEW OF THE DEPARTMENT OF REVENUE.
  20. THE SURVEYOR'S REPORT TO BE FILED WITH THE DEPARTMENT OF REVENUE, TALLAHASSEE, FLORIDA, IS SUBJECT TO THE REVIEW OF THE DEPARTMENT OF REVENUE.
  21. THE SURVEYOR'S REPORT TO BE FILED WITH THE DEPARTMENT OF REVENUE, TALLAHASSEE, FLORIDA, IS SUBJECT TO THE REVIEW OF THE DEPARTMENT OF REVENUE.
  22. THE SURVEYOR'S REPORT TO BE FILED WITH THE DEPARTMENT OF REVENUE, TALLAHASSEE, FLORIDA, IS SUBJECT TO THE REVIEW OF THE DEPARTMENT OF REVENUE.
  23. THE SURVEYOR'S REPORT TO BE FILED WITH THE DEPARTMENT OF REVENUE, TALLAHASSEE, FLORIDA, IS SUBJECT TO THE REVIEW OF THE DEPARTMENT OF REVENUE.
  24. THE SURVEYOR'S REPORT TO BE FILED WITH THE DEPARTMENT OF REVENUE, TALLAHASSEE, FLORIDA, IS SUBJECT TO THE REVIEW OF THE DEPARTMENT OF REVENUE.
  25. THE SURVEYOR'S REPORT TO BE FILED WITH THE DEPARTMENT OF REVENUE, TALLAHASSEE, FLORIDA, IS SUBJECT TO THE REVIEW OF THE DEPARTMENT OF REVENUE.
  26. THE SURVEYOR'S REPORT TO BE FILED WITH THE DEPARTMENT OF REVENUE, TALLAHASSEE, FLORIDA, IS SUBJECT TO THE REVIEW OF THE DEPARTMENT OF REVENUE.
  27. THE SURVEYOR'S REPORT TO BE FILED WITH THE DEPARTMENT OF REVENUE, TALLAHASSEE, FLORIDA, IS SUBJECT TO THE REVIEW OF THE DEPARTMENT OF REVENUE.
  28. THE SURVEYOR'S REPORT TO BE FILED WITH THE DEPARTMENT OF REVENUE, TALLAHASSEE, FLORIDA, IS SUBJECT TO THE REVIEW OF THE DEPARTMENT OF REVENUE.
  29. THE SURVEYOR'S REPORT TO BE FILED WITH THE DEPARTMENT OF REVENUE, TALLAHASSEE, FLORIDA, IS SUBJECT TO THE REVIEW OF THE DEPARTMENT OF REVENUE.
  30. THE SURVEYOR'S REPORT TO BE FILED WITH THE DEPARTMENT OF REVENUE, TALLAHASSEE, FLORIDA, IS SUBJECT TO THE REVIEW OF THE DEPARTMENT OF REVENUE.
  31. THE SURVEYOR'S REPORT TO BE FILED WITH THE DEPARTMENT OF REVENUE, TALLAHASSEE, FLORIDA, IS SUBJECT TO THE REVIEW OF THE DEPARTMENT OF REVENUE.
  32. THE SURVEYOR'S REPORT TO BE FILED WITH THE DEPARTMENT OF REVENUE, TALLAHASSEE, FLORIDA, IS SUBJECT TO THE REVIEW OF THE DEPARTMENT OF REVENUE.
  33. THE SURVEYOR'S REPORT TO BE FILED WITH THE DEPARTMENT OF REVENUE, TALLAHASSEE, FLORIDA, IS SUBJECT TO THE REVIEW OF THE DEPARTMENT OF REVENUE.
  34. THE SURVEYOR'S REPORT TO BE FILED WITH THE DEPARTMENT OF REVENUE, TALLAHASSEE, FLORIDA, IS SUBJECT TO THE REVIEW OF THE DEPARTMENT OF REVENUE.

KENMAP ONLY  
SCALE: 1"=100'



cont # 15