

RESOLUTION NO. 2015- 173
RESOLUTION OF THE BOARD OF COUNTY COMMISSIONERS
OF ST. JOHNS COUNTY, FLORIDA APPROVING A PLAT FOR
SAMARA LAKES PARCEL C PHASE FOUR A.

WHEREAS, D.R. HORTON, INC.-JACKSONVILLE, A DELAWARE CORPORATION, AS OWNER has applied to the Board of County Commissioners of St. Johns County, Florida for approval to record a plat known as Samara Lakes Parcel C Phase Four A.

NOW, THEREFORE BE IT RESOLVED BY THE BOARD OF COUNTY COMMISSIONERS OF ST. JOHNS COUNTY, FLORIDA, as follows:

Section 1. The above-described subdivision plat and its dedicated areas depicted thereon are conditionally approved and accepted by the Board of County Commissioners of St. Johns County, Florida subject to Sections 2, 3, 4, 5, 6 and 7.

Section 2. A Required Improvements Bond in the amount of \$87,714.74 has been filed with the Clerk's office.

Section 3. A Required Improvements Bond in the amount of \$47,571.34 will be required for maintenance.

Section 4. The approval and acceptance described in Section 1 shall not take effect until the Clerk has received a title opinion, certificate, or policy pertaining to the real property that is the subject of the aforementioned subdivision plat which opinion, certificate or policy is in a form acceptable to the County Attorney or Assistant County Attorney.

Section 5. The Clerk is instructed to file and record the consent and joinder (s) to the plat executed by all mortgages identified in the title opinion or certificate of the title in Section 4.

Section 6. An additional fee-in-lieu payment of two-thousand dollars (\$2,000) per lot for active recreation mitigation shall be paid prior to approval of electrical energizing for each home. Such fee-in-lieu payment shall be additional to any required impact fee.

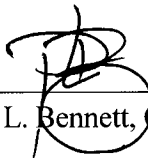
Section 7. The approval and acceptance described in Section 1 shall not take effect until the plat has been signed by each of the following departments, person or offices:

- a) Chairman or Vice-Chairman of the Board of County Commissioners of St. Johns County, Florida;
- b) Office of the County Attorney;
- c) County Growth Management Department;
- d) Office of the County Surveyor; and
- e) Clerk of Courts.

The Clerk shall not sign or accept the Plat for recording until it has been signed by each of the above persons or entities described in a) through d) above. If the plat is not signed and accepted by the Clerk for recording within 14 days from the date hereof, then the above-described conditional approval shall automatically terminate. If the plat is signed by the Clerk on or before such time, the conditions described herein shall be deemed to have been met.

ADOPTED by the Board of County Commissioners of St. Johns County, Florida, this 2nd day of June, 2015.

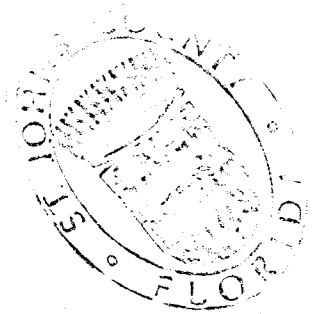
**BOARD OF COUNTY COMMISSIONERS
OF ST. JOHNS COUNTY, FLORIDA**

BY: 
Priscilla L. Bennett, Chair

ATTEST: Cheryl Strickland


Deputy Clerk

RENDITION DATE 6/5/15



Attachment 2

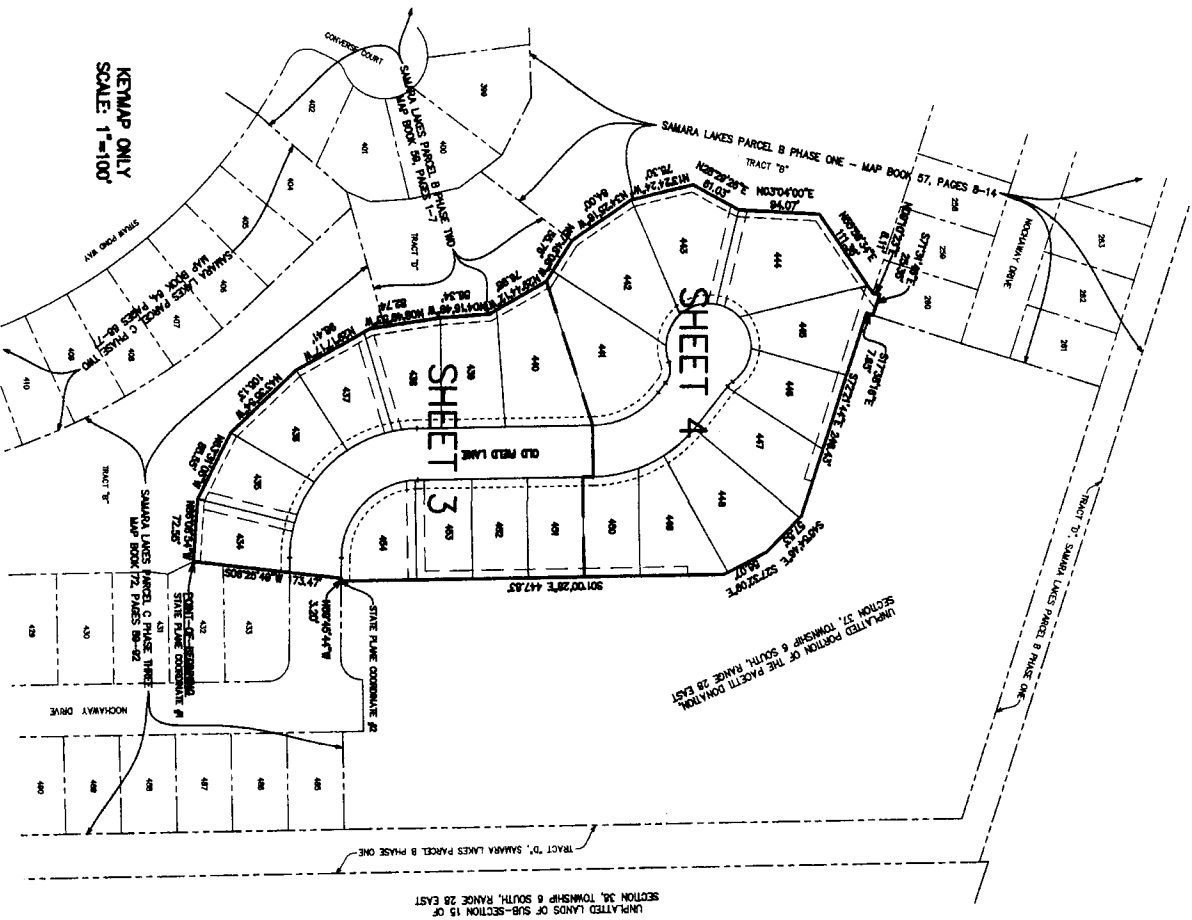
Plat Map

SAMARA LAKES PARCEL C PHASE FOUR-A

A PART OF THE PACETTI DONATION, SECTION 37, TOWNSHIP 6 SOUTH, RANGE 28 EAST, ST. JOHNS COUNTY, FLORIDA

MAP BOOK _____ PAGE _____

SHEET 2 OF 4

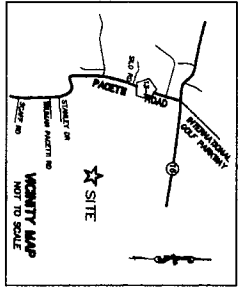


KENMAP ONLY
SCALE: 1"=100'

NOTICE: THIS PLAT, AS RECORDED IN ITS GRAPHIC FORM, IS THE OFFICIAL DERIVATION OF THE SUBDIVIDED LANDS DESCRIBED HEREIN AND WILL, IN NO CIRCUMSTANCES BE SUPPLANTED IN AUTHORITY BY ANY OTHER GRAPHIC OR DIGITAL FORM OF THE PLAT. THERE MAY BE ADDITIONAL RESTRICTIONS THAT ARE NOT RECORDED ON THIS PLAT THAT MAY BE FOUND IN THE PUBLIC RECORDS OF THIS COUNTY, BY SECTION 177.001 (27), FLORIDA STATUTES.

NOTES

1. BEARING REFERENCE: S72°21'44"E FOR SOUTHERLY R/W LINE OF NOCKHAWAY DRIVE PER PLAT OF SAMARA LAKES PARCEL B PHASE ONE, MAP BOOK 57, PAGES 8-14.
 2. STATE PLANE COORDINATES SHOWN WITH VALUES IN FEET DERIVALS THEREOF BASED ON NORTH AMERICAN DATUM 1983/NA, FLORIDA EAST ZONE, HOLDING TO VALUES SHOWN ON ST. JOHNS COUNTY GEODETIC CONTROL PROJECT DATED SEPTEMBER 1984 THROUGH FEBRUARY 1989 FOR MONUMENTS 0089 & 0270. THE INTENDED USE OF THESE COORDINATES IS FOR GAS BORE MARKING PURPOSES.
 3. TOTAL LOTS = 21.
- A EACH LOT DERIVED ON THIS PLAT IS SUBJECT TO AN ADDITIONAL 100¢-PER-SQUARE FOOT (90.00¢) FEE-~~IN-ADDITION~~ PAYMENT PER LOT FOR ACQUISITION OF A RESERVATION OF RIGHTS. THIS FEE-~~IN-ADDITION~~ PAYMENT SHALL BE IN ADDITION TO ANY OTHER PAYMENT REQUIRED BY THE COUNTY OF ST. JOHNS COUNTY, FLORIDA. THIS FEE-~~IN-ADDITION~~ PAYMENT SHALL BE PAID TO THE COUNTY OF ST. JOHNS COUNTY, FLORIDA, FOR ELECTRONIC RECORDING FOR EACH HOME, AT THE SAME TIME AS THE HOME OWNER MAKES THE PAYMENT TO THE COUNTY.



LEGEND:

□	ST. JOHNS COUNTY PERMANENT RESERVATION
■	BEARING REFERENCE POINT (BY TRUST REFERENCE BEARING) (BY TRUST REFERENCE BEARING) (BY TRUST REFERENCE BEARING)
●	STATION FOR THE PERMANENT RESERVATION
○	ST. JOHNS COUNTY CONTROL POINT (BY TRUST REFERENCE BEARING)
△	STATION
▽	STATION
+	POINT OF BEGINNING
×	POINT OF COMMENCEMENT
∗	POINT OF BEGINNING
∗	POINT OF COMMENCEMENT
∗	POINT OF BEGINNING
∗	POINT OF COMMENCEMENT
∗	POINT OF BEGINNING
∗	POINT OF COMMENCEMENT
∗	POINT OF BEGINNING
∗	POINT OF COMMENCEMENT
∗	POINT OF BEGINNING
∗	POINT OF COMMENCEMENT

STATE PLANE COORDINATES TABLE

POINT	NORTHING	EASTING	DESCRIPTION
1	7202480.00	500110.00	POINT OF BEGINNING
2	7202480.00	500110.00	CITY CORNER OF LOT 644



PREPARED FOR:
CLARSON and ASSOCIATES, INC.
PROFESSIONAL LAND SURVEYORS
1545 HALLO AVENUE
JACKSONVILLE, FLORIDA 32207
PHONE: (904) 386-3300