

RESOLUTION NO. 2015-294
RESOLUTION OF THE BOARD OF COUNTY COMMISSIONERS
OF ST. JOHNS COUNTY, FLORIDA APPROVING A PLAT FOR
SAMARA LAKES PARCEL C PHASE FOUR B.

WHEREAS, D.R. HORTON, INC.-JACKSONVILLE, A DELAWARE CORPORATION, AS OWNER has applied to the Board of County Commissioners of St. Johns County, Florida for approval to record a plat known as Samara Lakes Parcel C Phase Four B.

NOW, THEREFORE BE IT RESOLVED BY THE BOARD OF COUNTY COMMISSIONERS OF ST. JOHNS COUNTY, FLORIDA, as follows:

Section 1. The above-described subdivision plat and its dedicated areas depicted thereon are conditionally approved and accepted by the Board of County Commissioners of St. Johns County, Florida subject to Sections 2, 3, 4, 5, 6, and 7.

Section 2. A Required Improvements Bond in the amount of \$190,297.00 has been filed with the Clerk's office.

Section 3. A Required Improvements Bond in the amount of \$44,947.00 will be required for maintenance.

Section 4. The approval and acceptance described in Section 1 shall not take effect until the Clerk has received a title opinion, certificate, or policy pertaining to the real property that is the subject of the aforementioned subdivision plat which opinion, certificate or policy is in a form acceptable to the County Attorney or Assistant County Attorney.

Section 5. The Clerk is instructed to file and record the consent and joinder (s) to the plat executed by all mortgages identified in the title opinion or certificate of the title in Section 4.

Section 6. The approval and acceptance described in Section 1 shall not take effect until the plat has been signed by each of the following departments, person or offices:

- a) Chairman or Vice-Chairman of the Board of County Commissioners of St. Johns County, Florida;
- b) Office of the County Attorney;
- c) County Growth Management Department;
- d) Office of the County Surveyor; and
- e) Clerk of Courts.

The Clerk shall not sign or accept the Plat for recording until it has been signed by each of the above persons or entities described in a) through d) above. If the plat is not signed and accepted by the Clerk for recording within 14 days from the date hereof, then the above-described conditional approval shall

automatically terminate. If the plat is signed by the Clerk on or before such time, the conditions described herein shall be deemed to have been met.

Section 7. Notwithstanding Section 6, above, the approval and acceptance described in Section 1 shall not take effect until the requirements of Section 6 are fulfilled and the applicable appeal period of Ordinance 2015-59, MAJMOD 2014-04 Samara Lakes, has expired.

ADOPTED by the Board of County Commissioners of St. Johns County, Florida, this 6th day of October, 2015.

**BOARD OF COUNTY COMMISSIONERS
OF ST. JOHNS COUNTY, FLORIDA**

BY: _____

Priscilla L. Bennett, Chair

ATTEST: George Lareau, Clerk

Bonnie A. Putman

Deputy Clerk

RENDITION DATE

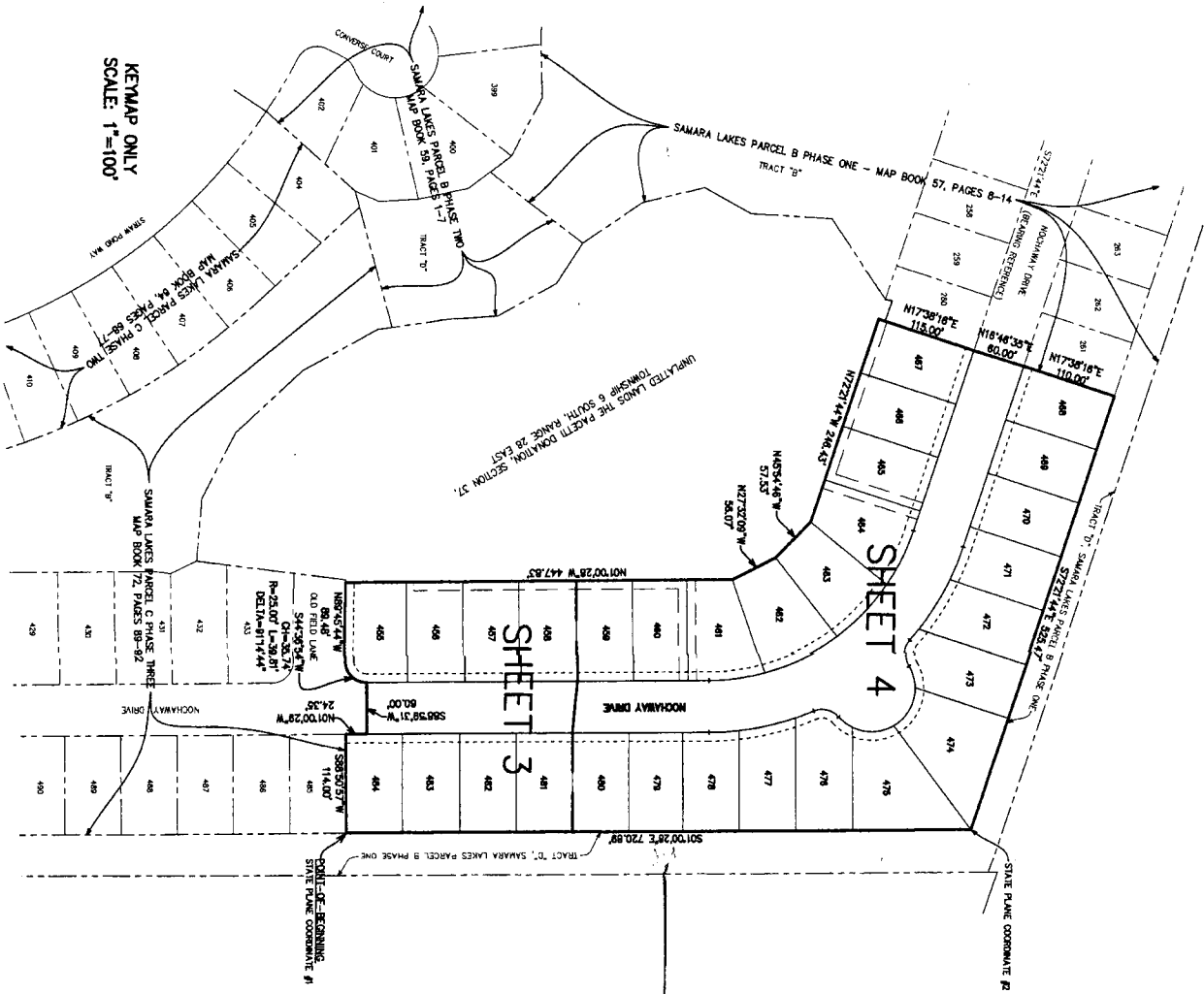
10/8/15

SAMARA LAKES PARCEL C PHASE FOUR-B

A PART OF THE PACETTI DONATION, SECTION 37, TOWNSHIP 6 SOUTH, RANGE 28 EAST, ST. JOHNS COUNTY, FLORIDA

MAP BOOK _____ PAGE _____

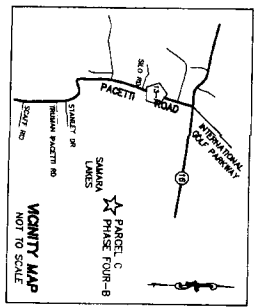
SHEET 2 OF 4



KEYMAP ONLY
SCALE: 1"=100'

NOTICE: THIS PLAT, AS RECORDED IN ITS GRAPHIC FORM, IS THE OFFICIAL DEPICTION OF THE SUBDIVIDED LANDS DESCRIBED HEREIN AND WILL IN NO CIRCUMSTANCES BE SUPPLANTED IN AUTHORITY BY ANY OTHER GRAPHIC OR DIGITAL FORM OF THE PLAT. THERE MAY BE ADDITIONAL RESTRICTIONS THAT ARE NOT RECORDED ON THIS PLAT THAT MAY BE FOUND IN THE PUBLIC RECORDS OF THIS COUNTY, BY SECTION 177.091 (27), FLORIDA STATUTES.

- NOTES:**
1. BEARING REFERENCE: S77°21'44"E FOR SOUTHERLY R/W LINE OF NOCHAMNY DRIVE PER PLAT OF SAMARA LAKES PARCEL B PHASE ONE, MAP BOOK 57, PAGES 8-14.
 2. STATE PLANE COORDINATES SHOWN WITH VALUES IN FEET DERIVED THEREOF BASED ON NORTH AMERICAN DATUM 1983/90, FLORIDA EAST ZONE, HOLDING TO VALUES SHOWN ON A STATE PLANE COORDINATE PROJECT DATED SEPTEMBER 1994 THROUGH FEBRUARY 1998 FOR MONUMENTS 0269 & 0270. THE INTENDED USE OF THESE COORDINATES IS FOR GAS BASE MAPPING PURPOSES.
 3. TOTAL LOTS = 30.



LEGEND:

□	SET POINT MONUMENT
■	BEARING REFERENCE MONUMENT (18 1794)
■	BEARING REFERENCE MONUMENT (18 1795)
■	SET POINT MONUMENT (18 1794)
■	SET POINT MONUMENT (18 1795)
■	SET PERMANENT CONTROL POINT (18 1794)
■	SET PERMANENT CONTROL POINT (18 1795)
■	MONUMENT
■	CHANGELINE
■	RIGHT OF WAY
■	POINT OF CURVATURE
■	POINT OF TANGENCY
■	POINT OF BEGINNING
■	POINT OF BEGINNING
■	STATE PLANE CORNER #1
■	STATE PLANE CORNER #2
■	OPTIONAL RECORDS BOOK OR VOLUME

STATE PLANE COORDINATES TABLE

POINT	NORTHING	EASTING	DESCRIPTION
1	206223.8611	502774.8288	POINT OF BEGINNING
2	206110.1792	502762.5426	NORTH EASTLY CORNER



PREPARED BY:
CLARSON ASSOCIATES, INC.
PROFESSIONAL SURVEYORS
1643 WALDO AVENUE
JACKSONVILLE, FLORIDA 32207
PHONE: (904) 396-2623