

**RESOLUTION NO. 2016-241**  
**RESOLUTION OF THE BOARD OF COUNTY COMMISSIONERS**  
**OF ST. JOHNS COUNTY, FLORIDA APPROVING A PLAT FOR**  
**SEA VIEW.**

**WHEREAS, ST. AUGUSTINE SEA VIEW, A FLORIDA LIMITED LIABILITY COMPANY, AS OWNER** has applied to the Board of County Commissioners of St. Johns County, Florida for approval to record a plat known as Sea View.

**NOW, THEREFORE BE IT RESOLVED BY THE BOARD OF COUNTY COMMISSIONERS OF ST. JOHNS COUNTY, FLORIDA,** as follows:

**Section 1.** The above-described subdivision plat and its dedicated areas depicted thereon are conditionally approved and accepted by the Board of County Commissioners of St. Johns County, Florida subject to Sections 2, 3, 4, 5 and 6.

**Section 2.** A Required Improvements Bond in the amount of \$817,915.41 has been filed with the Clerk's office.

**Section 3.** A Required Improvements Bond in the amount of \$171,531.32 will be required for maintenance.

**Section 4.** The approval and acceptance described in Section 1 shall not take effect until the Clerk has received a title opinion, certificate, or policy pertaining to the real property that is the subject of the aforementioned subdivision plat which opinion, certificate or policy is in a form acceptable to the County Attorney or Assistant County Attorney.

**Section 5.** The Clerk is instructed to file and record the consent and joinder (s) to the plat executed by all mortgages identified in the title opinion or certificate of the title in Section 4.

**Section 6.** The approval and acceptance described in Section 1 shall not take effect until the plat has been signed by each of the following departments, person or offices:

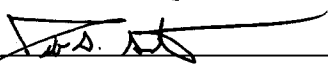
- a) Chairman or Vice-Chairman of the Board of County Commissioners of St. Johns County, Florida;
- b) Office of the County Attorney;
- c) County Growth Management Department;
- d) Office of the County Surveyor; and
- e) Clerk of Courts.

The Clerk shall not sign or accept the Plat for recording until it has been signed by each of the above persons or entities described in a) through d) above. If the plat is not signed and accepted by the Clerk for recording within 14 days from the date hereof, then the above-described conditional approval shall


automatically terminate. If the plat is signed by the Clerk on or before such time, the conditions described herein shall be deemed to have been met.

**ADOPTED** by the Board of County Commissioners of St. Johns County, Florida, this 16<sup>th</sup> day of August, 2016.

**BOARD OF COUNTY COMMISSIONERS  
OF ST. JOHNS COUNTY, FLORIDA**

BY:   
Jeb S. Smith, Chair

**ATTEST:** Hunter S. Conrad

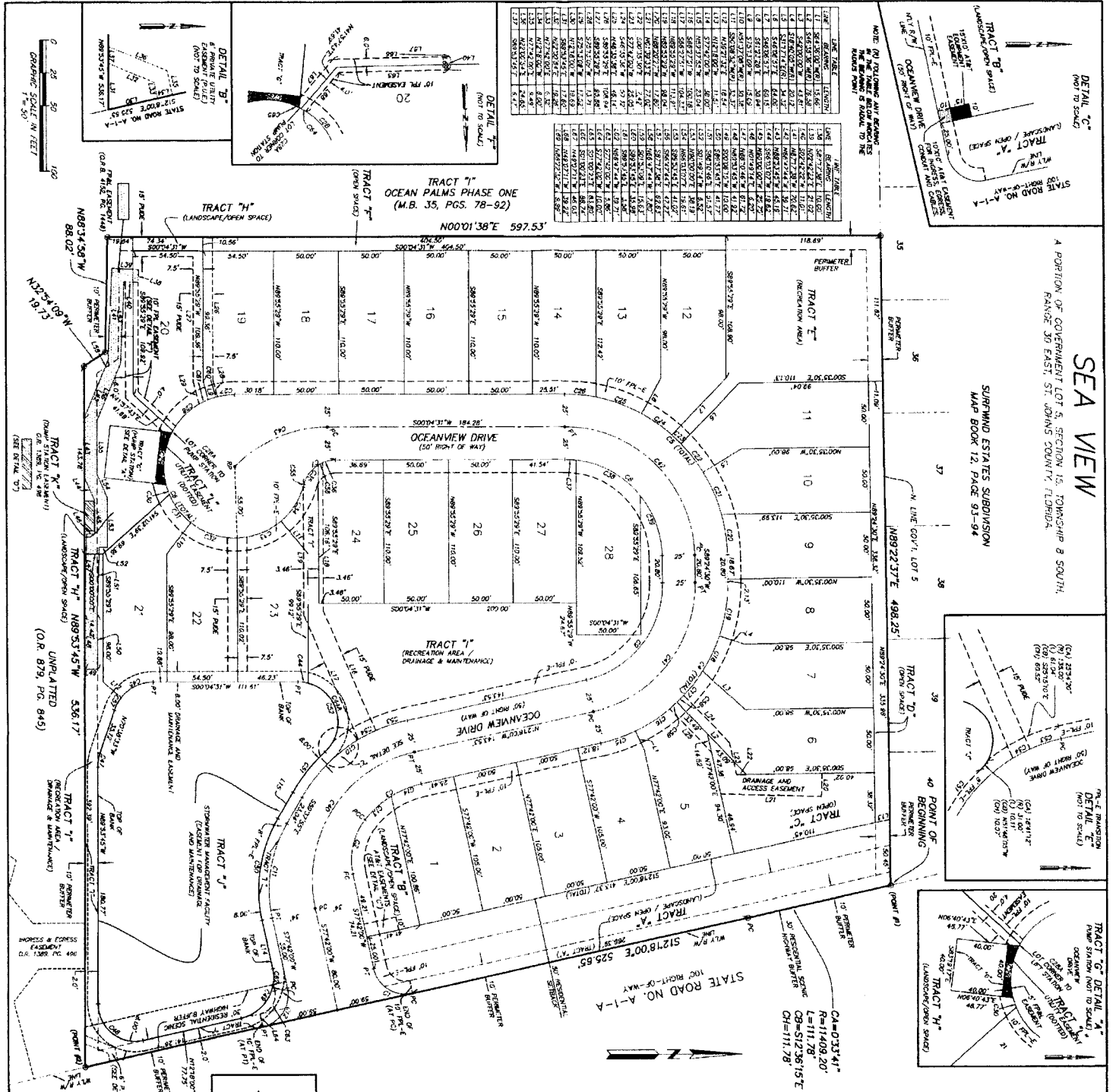
  
Deputy Clerk

**RENDITION DATE** 8/18/16



# SEA VIEW

A PORTION OF GOVERNMENT LOT 5, SECTION 15, TOWNSHIP 8 SOUTH, RANGE 30 EAST, ST. JOHNS COUNTY, FLORIDA.  
 SURFWARD ESTATES SUBDIVISION  
 MAP BOOK 12, PAGE 93-94



TRACT	AREA (SQ. FT.)	AREA (ACRES)
1	10,000	0.2296
2	10,000	0.2296
3	10,000	0.2296
4	10,000	0.2296
5	10,000	0.2296
6	10,000	0.2296
7	10,000	0.2296
8	10,000	0.2296
9	10,000	0.2296
10	10,000	0.2296
11	10,000	0.2296
12	10,000	0.2296
13	10,000	0.2296
14	10,000	0.2296
15	10,000	0.2296
16	10,000	0.2296
17	10,000	0.2296
18	10,000	0.2296
19	10,000	0.2296
20	10,000	0.2296
21	10,000	0.2296
22	10,000	0.2296
23	10,000	0.2296
24	10,000	0.2296
25	10,000	0.2296
26	10,000	0.2296
27	10,000	0.2296
28	10,000	0.2296
29	10,000	0.2296
30	10,000	0.2296
31	10,000	0.2296
32	10,000	0.2296
33	10,000	0.2296
34	10,000	0.2296
35	10,000	0.2296
36	10,000	0.2296
37	10,000	0.2296
38	10,000	0.2296
39	10,000	0.2296
40	10,000	0.2296
<b>TOTAL</b>	<b>400,000</b>	<b>9.184</b>

## MAP BOOK PAGE

SHEET 2 OF 2 SHEETS  
 (SEE SHEET 1 OF 2 FOR NOTES AND LEGEND)

PREPARED BY: **RICHARD A. MILLER & ASSOCIATES, INC.**  
 6701 BEACH BLVD., SUITE 400  
 JACKSONVILLE, FLORIDA 32216  
 TELEPHONE (904) 721-1228

STATE PLANNING COMMISSION NOTE: THIS MAP IS FOR THE PURPOSE OF RECORDING THE GENERAL CONCEPTS OF THE SURFWARD ESTATES SUBDIVISION. THE STATE PLANNING COMMISSION HAS REVIEWED THE MAP AND HAS DETERMINED THAT IT IS IN ACCORDANCE WITH THE REQUIREMENTS OF CHAPTER 170, F.S.

STATE PLANNING COMMISSION NOTE: THIS MAP IS FOR THE PURPOSE OF RECORDING THE GENERAL CONCEPTS OF THE SURFWARD ESTATES SUBDIVISION. THE STATE PLANNING COMMISSION HAS REVIEWED THE MAP AND HAS DETERMINED THAT IT IS IN ACCORDANCE WITH THE REQUIREMENTS OF CHAPTER 170, F.S.

STATE PLANNING COMMISSION NOTE: THIS MAP IS FOR THE PURPOSE OF RECORDING THE GENERAL CONCEPTS OF THE SURFWARD ESTATES SUBDIVISION. THE STATE PLANNING COMMISSION HAS REVIEWED THE MAP AND HAS DETERMINED THAT IT IS IN ACCORDANCE WITH THE REQUIREMENTS OF CHAPTER 170, F.S.

STATE PLANNING COMMISSION NOTE: THIS MAP IS FOR THE PURPOSE OF RECORDING THE GENERAL CONCEPTS OF THE SURFWARD ESTATES SUBDIVISION. THE STATE PLANNING COMMISSION HAS REVIEWED THE MAP AND HAS DETERMINED THAT IT IS IN ACCORDANCE WITH THE REQUIREMENTS OF CHAPTER 170, F.S.

STATE PLANNING COMMISSION NOTE: THIS MAP IS FOR THE PURPOSE OF RECORDING THE GENERAL CONCEPTS OF THE SURFWARD ESTATES SUBDIVISION. THE STATE PLANNING COMMISSION HAS REVIEWED THE MAP AND HAS DETERMINED THAT IT IS IN ACCORDANCE WITH THE REQUIREMENTS OF CHAPTER 170, F.S.

STATE PLANNING COMMISSION NOTE: THIS MAP IS FOR THE PURPOSE OF RECORDING THE GENERAL CONCEPTS OF THE SURFWARD ESTATES SUBDIVISION. THE STATE PLANNING COMMISSION HAS REVIEWED THE MAP AND HAS DETERMINED THAT IT IS IN ACCORDANCE WITH THE REQUIREMENTS OF CHAPTER 170, F.S.

STATE PLANNING COMMISSION NOTE: THIS MAP IS FOR THE PURPOSE OF RECORDING THE GENERAL CONCEPTS OF THE SURFWARD ESTATES SUBDIVISION. THE STATE PLANNING COMMISSION HAS REVIEWED THE MAP AND HAS DETERMINED THAT IT IS IN ACCORDANCE WITH THE REQUIREMENTS OF CHAPTER 170, F.S.

STATE PLANNING COMMISSION NOTE: THIS MAP IS FOR THE PURPOSE OF RECORDING THE GENERAL CONCEPTS OF THE SURFWARD ESTATES SUBDIVISION. THE STATE PLANNING COMMISSION HAS REVIEWED THE MAP AND HAS DETERMINED THAT IT IS IN ACCORDANCE WITH THE REQUIREMENTS OF CHAPTER 170, F.S.

STATE PLANNING COMMISSION NOTE: THIS MAP IS FOR THE PURPOSE OF RECORDING THE GENERAL CONCEPTS OF THE SURFWARD ESTATES SUBDIVISION. THE STATE PLANNING COMMISSION HAS REVIEWED THE MAP AND HAS DETERMINED THAT IT IS IN ACCORDANCE WITH THE REQUIREMENTS OF CHAPTER 170, F.S.

STATE PLANNING COMMISSION NOTE: THIS MAP IS FOR THE PURPOSE OF RECORDING THE GENERAL CONCEPTS OF THE SURFWARD ESTATES SUBDIVISION. THE STATE PLANNING COMMISSION HAS REVIEWED THE MAP AND HAS DETERMINED THAT IT IS IN ACCORDANCE WITH THE REQUIREMENTS OF CHAPTER 170, F.S.

STATE PLANNING COMMISSION NOTE: THIS MAP IS FOR THE PURPOSE OF RECORDING THE GENERAL CONCEPTS OF THE SURFWARD ESTATES SUBDIVISION. THE STATE PLANNING COMMISSION HAS REVIEWED THE MAP AND HAS DETERMINED THAT IT IS IN ACCORDANCE WITH THE REQUIREMENTS OF CHAPTER 170, F.S.

STATE PLANNING COMMISSION NOTE: THIS MAP IS FOR THE PURPOSE OF RECORDING THE GENERAL CONCEPTS OF THE SURFWARD ESTATES SUBDIVISION. THE STATE PLANNING COMMISSION HAS REVIEWED THE MAP AND HAS DETERMINED THAT IT IS IN ACCORDANCE WITH THE REQUIREMENTS OF CHAPTER 170, F.S.

STATE PLANNING COMMISSION NOTE: THIS MAP IS FOR THE PURPOSE OF RECORDING THE GENERAL CONCEPTS OF THE SURFWARD ESTATES SUBDIVISION. THE STATE PLANNING COMMISSION HAS REVIEWED THE MAP AND HAS DETERMINED THAT IT IS IN ACCORDANCE WITH THE REQUIREMENTS OF CHAPTER 170, F.S.