

**RESOLUTION NO. 2016- 303**  
**RESOLUTION OF THE BOARD OF COUNTY COMMISSIONERS**  
**OF ST. JOHNS COUNTY, FLORIDA APPROVING A PLAT FOR**  
**PEACE OF HEART**

**WHEREAS, PEACE OF HEART REALTY, LLC; AND SIDNEY J. MICKLER, AS OWNERS** have applied to the Board of County Commissioners of St. Johns County, Florida for approval to record a plat known as Peace of Heart.

**NOW, THEREFORE BE IT RESOLVED BY THE BOARD OF COUNTY COMMISSIONERS OF ST. JOHNS COUNTY, FLORIDA,** as follows:

**Section 1.** The above-described subdivision plat and its dedicated areas depicted thereon are conditionally approved and accepted by the Board of County Commissioners of St. Johns County, Florida subject to Sections 2, 3, 4, 5 and 6.

**Section 2.** A Required Improvements Bond for construction is not required.

**Section 3.** A Required Improvements Bond for maintenance is not required.

**Section 4.** The approval and acceptance described in Section 1 shall not take effect until the Clerk has received a title opinion, certificate, or policy pertaining to the real property that is the subject of the aforementioned subdivision plat which opinion, certificate or policy is in a form acceptable to the County Attorney or Assistant County Attorney.

**Section 5.** The Clerk is instructed to file and record the consent and joinder (s) to the plat executed by all mortgages identified in the title opinion or certificate of the title in Section 4.

**Section 6.** The approval and acceptance described in Section 1 shall not take effect until the plat has been signed by each of the following departments, person or offices:

- a) Chairman or Vice-Chairman of the Board of County Commissioners of St. Johns County, Florida;
- b) Office of the County Attorney;
- c) County Growth Management Department;
- d) Office of the County Surveyor; and
- e) Clerk of Courts.

The Clerk shall not sign or accept the Plat for recording until it has been signed by each of the above persons or entities described in a) through d) above. If the plat is not signed and accepted by the Clerk for recording within 14 days from the date hereof, then the above-described conditional approval shall automatically terminate. If the plat is signed by the Clerk on or before such time, the conditions described herein shall be deemed to have been met.

ADOPTED by the Board of County Commissioners of St. Johns County, Florida, this 20 day of December, 2016.

**BOARD OF COUNTY COMMISSIONERS  
OF ST. JOHNS COUNTY, FLORIDA**

BY: \_\_\_\_\_

James K. Johns, Chair

ATTEST: Hunter S. Conrad, Clerk

Pam Halterman

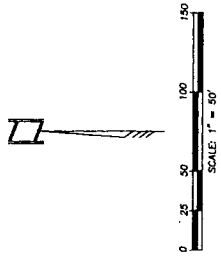
Deputy Clerk

RENDITION DATE 12/21/16

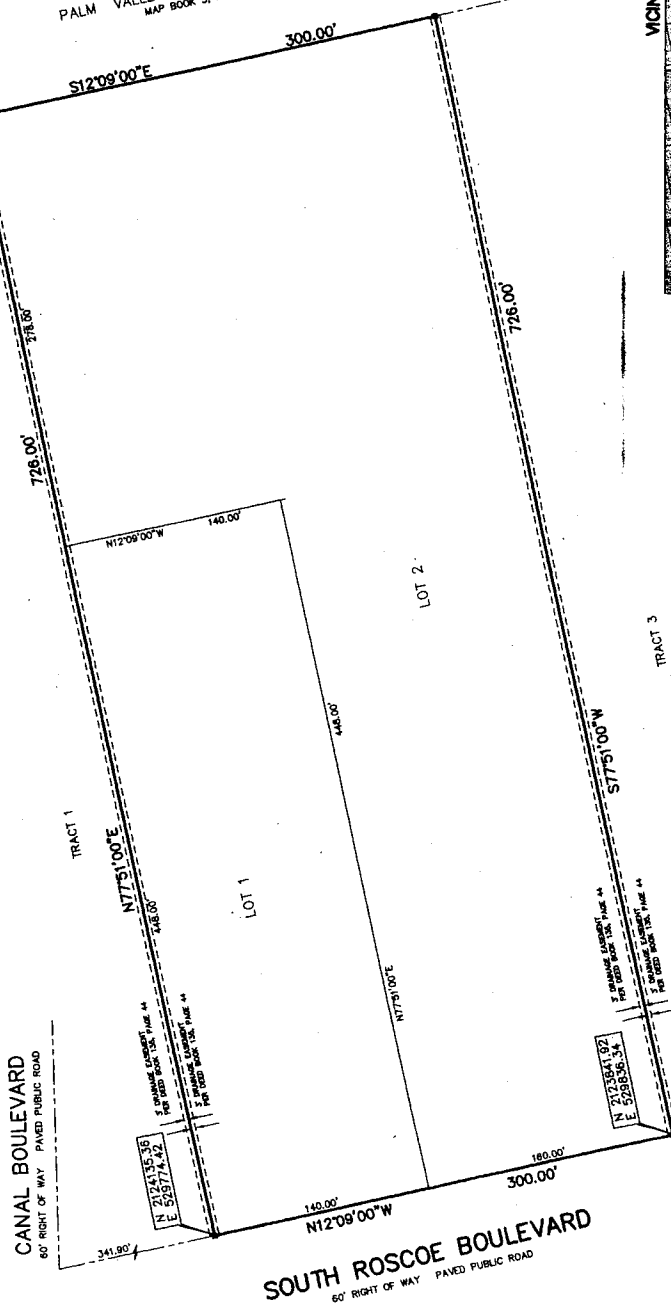


# PEACE OF HEART

A PART OF THE THOMAS FITCH GRANT, SECTION 40, TOWNSHIP 4 SOUTH, RANGE 29 EAST, ST. JOHNS COUNTY, FLORIDA  
 BEING A REPLAT OF TRACT 2, PALM VALLEY GARDENS AS RECORDED IN MAP BOOK 5,  
 PAGE 58, OF THE PUBLIC RECORDS OF ST. JOHNS COUNTY, FLORIDA.



PALM VALLEY GARDENS UNIT FIVE  
 MAP BOOK 5, PAGE 72



- NOTES:**
1. BEARINGS ARE BASED ON THE NORTH LINE OF TRACT 2 BEING NORTH 77°51'00\"/>
  2. NOTICE: THIS PLAT, AS RECORDED IN ITS GRAPHIC FORM, IS THE OFFICIAL DEPICTION OF THE SURVIVED LANDS DESCRIBED HEREIN AND IS SUPERSEDED BY ANY DIGITAL FORM OF THE PLAT. THERE MAY BE OTHER GRAPHIC OR DIGITAL FORMS OF THE PLAT. THERE MAY BE ADDITIONAL RESTRICTIONS THAT ARE NOT RECORDED ON THIS PLAT THAT MAY BE FOUND IN THE PUBLIC RECORDS OF THIS COUNTY.
  3. THE COORDINATES SHOWN HEREON ARE IN N.A.D. 1983 DATUM. ANY DISCREPANCY BETWEEN THE COORDINATE VALUES SHOWN ON THIS PLAT AND THE COORDINATE VALUES SHOWN ON ANY OTHER PLAT OR SOFTWARE, THE COORDINATE VALUES SHOWN DO NOT CORRESPOND WITH THE BEARINGS SHOWN HEREON.

- LEGEND**
- DENOTES PERMANENT REFERENCE MONUMENT, SET
  - DENOTES CONCRETE MONUMENT, STAMPED LB 3672

PREPARED BY:  
 BOATWRIGHT LAND SURVEYORS, INC.  
 1100 UNIVERSITY BLVD.  
 JACKSONVILLE BEACH, FLORIDA  
 (904) 241-6560