

**RESOLUTION NO. 2017- 122**  
**RESOLUTION OF THE BOARD OF COUNTY COMMISSIONERS**  
**OF ST. JOHNS COUNTY, FLORIDA APPROVING A PLAT FOR**  
**SEA VIEW TRACTS "G", "H" AND "L".**

WHEREAS, ST. AUGUSTINE SEA VIEW, LLC, A FLORIDA LIMITED LIABILITY COMPANY, AS OWNER has applied to the Board of County Commissioners of St. Johns County, Florida for approval to record a plat known as Sea View Tracts "G", "H" and "L".

NOW, THEREFORE BE IT RESOLVED BY THE BOARD OF COUNTY COMMISSIONERS OF ST. JOHNS COUNTY, FLORIDA, as follows:

**Section 1.** The above-described subdivision plat and its dedicated areas depicted thereon are conditionally approved and accepted by the Board of County Commissioners of St. Johns County, Florida subject to Sections 2, 3, 4, 5 and 6.

**Section 2.** A Required Improvements Bond for construction is not required.

**Section 3.** A Required Improvements Bond for maintenance is not required.

**Section 4.** The approval and acceptance described in Section 1 shall not take effect until the Clerk has received a title opinion, certificate, or policy pertaining to the real property that is the subject of the aforementioned subdivision plat which opinion, certificate or policy is in a form acceptable to the County Attorney or Assistant County Attorney.

**Section 5.** The Clerk is instructed to file and record the consent and joinder (s) to the plat executed by all mortgages identified in the title opinion or certificate of the title in Section 4.

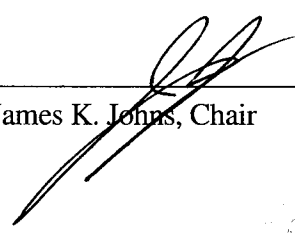
**Section 6.** The approval and acceptance described in Section 1 shall not take effect until the plat has been signed by each of the following departments, person or offices:

- a) Chairman or Vice-Chairman of the Board of County Commissioners of St. Johns County, Florida;
- b) Office of the County Attorney;
- c) County Growth Management Department;
- d) Office of the County Surveyor; and
- e) Clerk of Courts.

The Clerk shall not sign or accept the Plat for recording until it has been signed by each of the above persons or entities described in a) through d) above. If the plat is not signed and accepted by the Clerk for recording within 14 days from the date hereof, then the above-described conditional approval shall automatically terminate. If the plat is signed by the Clerk on or before such time, the conditions described herein shall be deemed to have been met.

ADOPTED by the Board of County Commissioners of St. Johns County, Florida, this 18<sup>th</sup> day of April, 2017.

**BOARD OF COUNTY COMMISSIONERS  
OF ST. JOHNS COUNTY, FLORIDA**

BY:   
James K. Johns, Chair

ATTEST: Hunter S. Conrad, Clerk

  
Deputy Clerk



RENDITION DATE \_\_\_\_\_

SEA VIEW TRACTS "G", "H" AND "L"

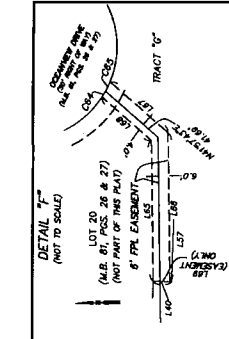
A PORTION OF GOVERNMENT LOT 5, SECTION 15, TOWNSHIP 8 SOUTH, RANGE 30 EAST, ST. JOHNS COUNTY, FLORIDA, BEING A REPLAT OF TRACTS "G", "H" AND "L", PLAT OF SEA VIEW ACCORDING TO PLAT THEREOF RECORDED IN MAP BOOK 81, PAGES 26 AND 27 OF THE PUBLIC RECORDS OF ST. JOHNS COUNTY, FLORIDA.

CAPTION ALL OF TRACTS "G", "H" AND "L", PLAT OF SEA VIEW ACCORDING TO PLAT THEREOF RECORDED IN MAP BOOK 81, PAGES 26 AND 27 OF THE PUBLIC RECORDS OF ST. JOHNS COUNTY, FLORIDA.

NOTES

- 1) BOUNDARY PERMANENT REFERENCE MONUMENT SET I.B. NO. 1618 BEARING SOUTH 10 DEGREES EAST WITH A BEARING OF 116.67' AS SHOWN ON THE PLAT.

LEGEND: 1. Plat of Oceanview Drive. 2. Plat of Sea View Tracts. 3. Plat of Public Right-of-Way. 4. Plat of Public Right-of-Way. 5. Plat of Public Right-of-Way. 6. Plat of Public Right-of-Way. 7. Plat of Public Right-of-Way. 8. Plat of Public Right-of-Way. 9. Plat of Public Right-of-Way. 10. Plat of Public Right-of-Way.



TABLED CURVE TABLE showing columns for AREA, PERIMETER, DISTANCE, BEARING, and CHORD. It lists data for curves of various radii and central angles.

ST. JOHNS COUNTY, FLORIDA

COUNTY OF ST. JOHNS

STATE OF FLORIDA

IN WITNESS WHEREOF, I have hereunto set my hand and the seal of said County at Tallahassee, Florida, this 15th day of August, 2017.

Notary Public State of Florida

Notary Public State of Florida

Notary Public State of Florida

Notary Public State of Florida

STATE OF FLORIDA COUNTY OF ST. JOHNS

CERTIFICATE OF APPROVAL AND ACCEPTANCE BOARD OF COUNTY COMMISSIONERS

CERTIFICATE OF CLERK

CERTIFICATE OF APPROVAL OF PLAT REVIEW

CERTIFICATE OF SUPERVISOR

CERTIFICATE OF COUNTY ATTORNEY

CERTIFICATE OF DEED

CERTIFICATE OF SUPERVISOR

ADDITIONAL AND CORRECTIVE

PLAT OF SEA VIEW TRACTS "G", "H" AND "L"

PLAT OF SEA VIEW TRACTS "G", "H" AND "L"

PLAT OF SEA VIEW TRACTS "G", "H" AND "L"

PLAT OF SEA VIEW TRACTS "G", "H" AND "L"

PLAT OF SEA VIEW TRACTS "G", "H" AND "L"

PLAT OF SEA VIEW TRACTS "G", "H" AND "L"

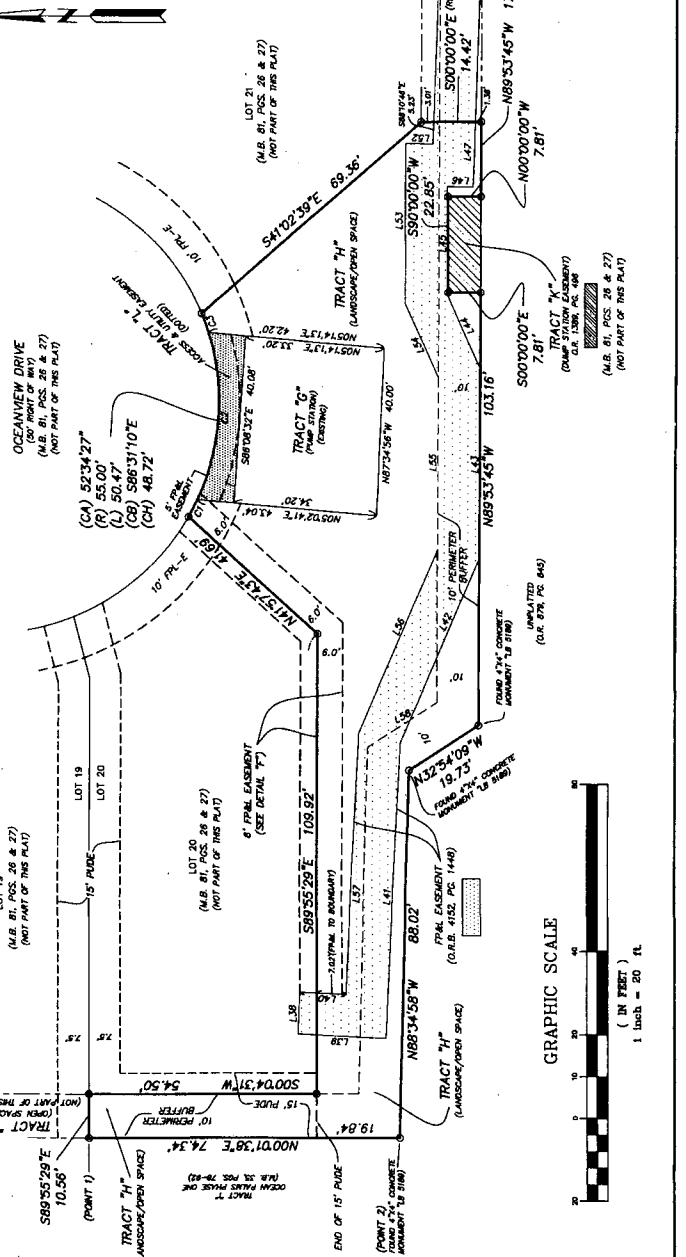
PLAT OF SEA VIEW TRACTS "G", "H" AND "L"

PLAT OF SEA VIEW TRACTS "G", "H" AND "L"

PLAT OF SEA VIEW TRACTS "G", "H" AND "L"

PLAT OF SEA VIEW TRACTS "G", "H" AND "L"

TABLED CURVE TABLE (continued) showing columns for AREA, PERIMETER, DISTANCE, BEARING, and CHORD.



PREPARED BY MILLER & ASSOCIATES, INC. PROFESSIONAL LAND SURVEYORS 6701 BEACH BLVD., SUITE #200 JACKSONVILLE, FLORIDA 32216 TELEPHONE (904) 721-1226