

RESOLUTION NO. 2017- 32  
RESOLUTION OF THE BOARD OF COUNTY COMMISSIONERS  
OF ST. JOHNS COUNTY, FLORIDA APPROVING A PLAT FOR  
LAS CALINAS PARCEL 3A UNIT 1 PHASE 5.

WHEREAS, PULTE HOME CORPORATION, A MICHIGAN CORPORATION; AND LAS CALINAS ESTATES HOMEOWNERS ASSOCIATION, INC., A FORIDA NOT-FOR-PROFIT CORPORATION; AS OWNERS have applied to the Board of County Commissioners of St. Johns County, Florida for approval to record a plat known as Las Calinas Parcel 3A Unit 1 Phase 5.

NOW, THEREFORE BE IT RESOLVED BY THE BOARD OF COUNTY COMMISSIONERS OF ST. JOHNS COUNTY, FLORIDA, as follows:

**Section 1.** The above-described subdivision plat and its dedicated areas depicted thereon are conditionally approved and accepted by the Board of County Commissioners of St. Johns County, Florida subject to Sections 2, 3, 4, 5 and 6.

**Section 2.** A Required Improvements Bond in the amount of \$415,334.72 has been filed with the Clerk's office.

**Section 3.** A Required Improvements Bond in the amount of \$57,138.27 will be required for maintenance.

**Section 4.** The approval and acceptance described in Section 1 shall not take effect until the Clerk has received a title opinion, certificate, or policy pertaining to the real property that is the subject of the aforementioned subdivision plat which opinion, certificate or policy is in a form acceptable to the County Attorney or Assistant County Attorney.

**Section 5.** The Clerk is instructed to file and record the consent and joinder (s) to the plat executed by all mortgages identified in the title opinion or certificate of the title in Section 4.

**Section 6.** The approval and acceptance described in Section 1 shall not take effect until the plat has been signed by each of the following departments, person or offices:

- a) Chairman or Vice-Chairman of the Board of County Commissioners of St. Johns County, Florida;
- b) Office of the County Attorney;
- c) County Growth Management Department;
- d) Office of the County Surveyor; and
- e) Clerk of Courts.

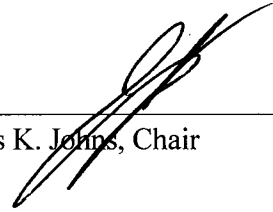
The Clerk shall not sign or accept the Plat for recording until it has been signed by each of the above persons or entities described in a) through d) above. If the plat is not signed and accepted by the Clerk for recording within 14 days from the date hereof, then the above-described conditional approval shall

automatically terminate. If the plat is signed by the Clerk on or before such time, the conditions described herein shall be deemed to have been met.

**ADOPTED** by the Board of County Commissioners of St. Johns County, Florida, this 7 day of February, 2017.

**BOARD OF COUNTY COMMISSIONERS  
OF ST. JOHNS COUNTY, FLORIDA**

BY: \_\_\_\_\_  
James K. Johns, Chair



**ATTEST:** Hunter S. Conrad

*Hunter S. Conrad*  
Deputy Clerk

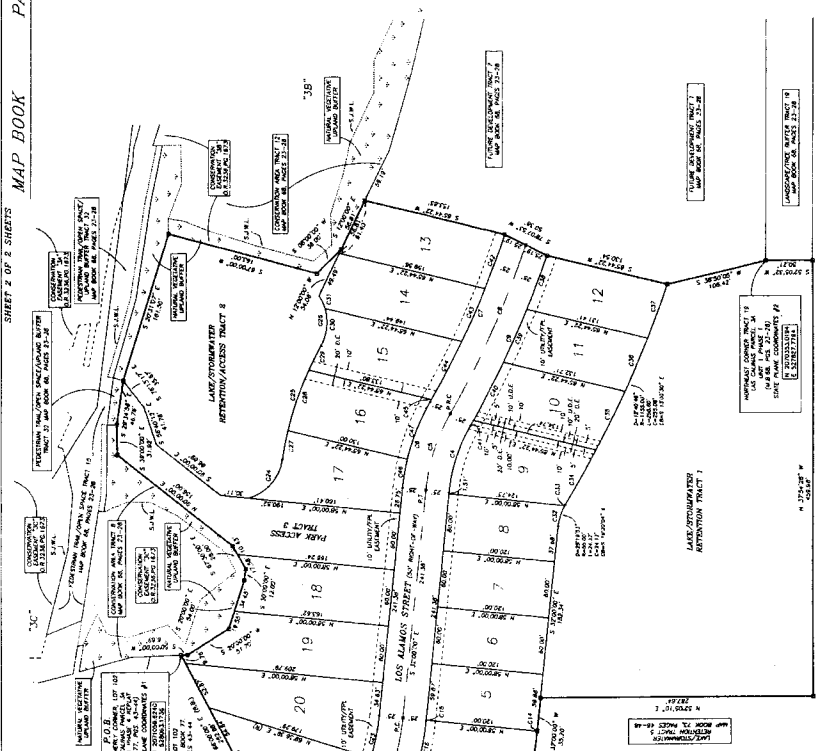
**RENDITION DATE** 2/9/17



SHEET 2 OF 2 SHEETS MAP BOOK PAGE

**LAS CALINAS PARCEL 3A  
UNIT 1 PHASE 5**

AS SHOWN ON MAP BOOK PAGES 31-32, 33, 34, 35, 36, 37, 38, 39, 40, 41, 42, 43, 44, 45, 46, 47, 48, 49, 50, 51, 52, 53, 54, 55, 56, 57, 58, 59, 60, 61, 62, 63, 64, 65, 66, 67, 68, 69, 70, 71, 72, 73, 74, 75, 76, 77, 78, 79, 80, 81, 82, 83, 84, 85, 86, 87, 88, 89, 90, 91, 92, 93, 94, 95, 96, 97, 98, 99, 100, 101, 102, 103, 104, 105, 106, 107, 108, 109, 110, 111, 112, 113, 114, 115, 116, 117, 118, 119, 120, 121, 122, 123, 124, 125, 126, 127, 128, 129, 130, 131, 132, 133, 134, 135, 136, 137, 138, 139, 140, 141, 142, 143, 144, 145, 146, 147, 148, 149, 150, 151, 152, 153, 154, 155, 156, 157, 158, 159, 160, 161, 162, 163, 164, 165, 166, 167, 168, 169, 170, 171, 172, 173, 174, 175, 176, 177, 178, 179, 180, 181, 182, 183, 184, 185, 186, 187, 188, 189, 190, 191, 192, 193, 194, 195, 196, 197, 198, 199, 200, 201, 202, 203, 204, 205, 206, 207, 208, 209, 210, 211, 212, 213, 214, 215, 216, 217, 218, 219, 220, 221, 222, 223, 224, 225, 226, 227, 228, 229, 230, 231, 232, 233, 234, 235, 236, 237, 238, 239, 240, 241, 242, 243, 244, 245, 246, 247, 248, 249, 250, 251, 252, 253, 254, 255, 256, 257, 258, 259, 260, 261, 262, 263, 264, 265, 266, 267, 268, 269, 270, 271, 272, 273, 274, 275, 276, 277, 278, 279, 280, 281, 282, 283, 284, 285, 286, 287, 288, 289, 290, 291, 292, 293, 294, 295, 296, 297, 298, 299, 300, 301, 302, 303, 304, 305, 306, 307, 308, 309, 310, 311, 312, 313, 314, 315, 316, 317, 318, 319, 320, 321, 322, 323, 324, 325, 326, 327, 328, 329, 330, 331, 332, 333, 334, 335, 336, 337, 338, 339, 340, 341, 342, 343, 344, 345, 346, 347, 348, 349, 350, 351, 352, 353, 354, 355, 356, 357, 358, 359, 360, 361, 362, 363, 364, 365, 366, 367, 368, 369, 370, 371, 372, 373, 374, 375, 376, 377, 378, 379, 380, 381, 382, 383, 384, 385, 386, 387, 388, 389, 390, 391, 392, 393, 394, 395, 396, 397, 398, 399, 400, 401, 402, 403, 404, 405, 406, 407, 408, 409, 410, 411, 412, 413, 414, 415, 416, 417, 418, 419, 420, 421, 422, 423, 424, 425, 426, 427, 428, 429, 430, 431, 432, 433, 434, 435, 436, 437, 438, 439, 440, 441, 442, 443, 444, 445, 446, 447, 448, 449, 450, 451, 452, 453, 454, 455, 456, 457, 458, 459, 460, 461, 462, 463, 464, 465, 466, 467, 468, 469, 470, 471, 472, 473, 474, 475, 476, 477, 478, 479, 480, 481, 482, 483, 484, 485, 486, 487, 488, 489, 490, 491, 492, 493, 494, 495, 496, 497, 498, 499, 500, 501, 502, 503, 504, 505, 506, 507, 508, 509, 510, 511, 512, 513, 514, 515, 516, 517, 518, 519, 520, 521, 522, 523, 524, 525, 526, 527, 528, 529, 530, 531, 532, 533, 534, 535, 536, 537, 538, 539, 540, 541, 542, 543, 544, 545, 546, 547, 548, 549, 550, 551, 552, 553, 554, 555, 556, 557, 558, 559, 560, 561, 562, 563, 564, 565, 566, 567, 568, 569, 570, 571, 572, 573, 574, 575, 576, 577, 578, 579, 580, 581, 582, 583, 584, 585, 586, 587, 588, 589, 590, 591, 592, 593, 594, 595, 596, 597, 598, 599, 600, 601, 602, 603, 604, 605, 606, 607, 608, 609, 610, 611, 612, 613, 614, 615, 616, 617, 618, 619, 620, 621, 622, 623, 624, 625, 626, 627, 628, 629, 630, 631, 632, 633, 634, 635, 636, 637, 638, 639, 640, 641, 642, 643, 644, 645, 646, 647, 648, 649, 650, 651, 652, 653, 654, 655, 656, 657, 658, 659, 660, 661, 662, 663, 664, 665, 666, 667, 668, 669, 670, 671, 672, 673, 674, 675, 676, 677, 678, 679, 680, 681, 682, 683, 684, 685, 686, 687, 688, 689, 690, 691, 692, 693, 694, 695, 696, 697, 698, 699, 700, 701, 702, 703, 704, 705, 706, 707, 708, 709, 710, 711, 712, 713, 714, 715, 716, 717, 718, 719, 720, 721, 722, 723, 724, 725, 726, 727, 728, 729, 730, 731, 732, 733, 734, 735, 736, 737, 738, 739, 740, 741, 742, 743, 744, 745, 746, 747, 748, 749, 750, 751, 752, 753, 754, 755, 756, 757, 758, 759, 760, 761, 762, 763, 764, 765, 766, 767, 768, 769, 770, 771, 772, 773, 774, 775, 776, 777, 778, 779, 780, 781, 782, 783, 784, 785, 786, 787, 788, 789, 790, 791, 792, 793, 794, 795, 796, 797, 798, 799, 800, 801, 802, 803, 804, 805, 806, 807, 808, 809, 810, 811, 812, 813, 814, 815, 816, 817, 818, 819, 820, 821, 822, 823, 824, 825, 826, 827, 828, 829, 830, 831, 832, 833, 834, 835, 836, 837, 838, 839, 840, 841, 842, 843, 844, 845, 846, 847, 848, 849, 850, 851, 852, 853, 854, 855, 856, 857, 858, 859, 860, 861, 862, 863, 864, 865, 866, 867, 868, 869, 870, 871, 872, 873, 874, 875, 876, 877, 878, 879, 880, 881, 882, 883, 884, 885, 886, 887, 888, 889, 890, 891, 892, 893, 894, 895, 896, 897, 898, 899, 900, 901, 902, 903, 904, 905, 906, 907, 908, 909, 910, 911, 912, 913, 914, 915, 916, 917, 918, 919, 920, 921, 922, 923, 924, 925, 926, 927, 928, 929, 930, 931, 932, 933, 934, 935, 936, 937, 938, 939, 940, 941, 942, 943, 944, 945, 946, 947, 948, 949, 950, 951, 952, 953, 954, 955, 956, 957, 958, 959, 960, 961, 962, 963, 964, 965, 966, 967, 968, 969, 970, 971, 972, 973, 974, 975, 976, 977, 978, 979, 980, 981, 982, 983, 984, 985, 986, 987, 988, 989, 990, 991, 992, 993, 994, 995, 996, 997, 998, 999, 1000



**CURVE TABLE**

STATION	CHORD BEARING	CHORD DISTANCE	CHORD CURVE DISTANCE	CHORD CURVE BEARING	CHORD CURVE DISTANCE	CHORD CURVE BEARING	CHORD CURVE DISTANCE	CHORD CURVE BEARING
1	N 89° 59' 58" E	12.5000	12.5000	N 89° 59' 58" E	12.5000	N 89° 59' 58" E	12.5000	N 89° 59' 58" E
2	N 89° 59' 58" E	12.5000	12.5000	N 89° 59' 58" E	12.5000	N 89° 59' 58" E	12.5000	N 89° 59' 58" E
3	N 89° 59' 58" E	12.5000	12.5000	N 89° 59' 58" E	12.5000	N 89° 59' 58" E	12.5000	N 89° 59' 58" E
4	N 89° 59' 58" E	12.5000	12.5000	N 89° 59' 58" E	12.5000	N 89° 59' 58" E	12.5000	N 89° 59' 58" E
5	N 89° 59' 58" E	12.5000	12.5000	N 89° 59' 58" E	12.5000	N 89° 59' 58" E	12.5000	N 89° 59' 58" E
6	N 89° 59' 58" E	12.5000	12.5000	N 89° 59' 58" E	12.5000	N 89° 59' 58" E	12.5000	N 89° 59' 58" E
7	N 89° 59' 58" E	12.5000	12.5000	N 89° 59' 58" E	12.5000	N 89° 59' 58" E	12.5000	N 89° 59' 58" E
8	N 89° 59' 58" E	12.5000	12.5000	N 89° 59' 58" E	12.5000	N 89° 59' 58" E	12.5000	N 89° 59' 58" E
9	N 89° 59' 58" E	12.5000	12.5000	N 89° 59' 58" E	12.5000	N 89° 59' 58" E	12.5000	N 89° 59' 58" E
10	N 89° 59' 58" E	12.5000	12.5000	N 89° 59' 58" E	12.5000	N 89° 59' 58" E	12.5000	N 89° 59' 58" E
11	N 89° 59' 58" E	12.5000	12.5000	N 89° 59' 58" E	12.5000	N 89° 59' 58" E	12.5000	N 89° 59' 58" E
12	N 89° 59' 58" E	12.5000	12.5000	N 89° 59' 58" E	12.5000	N 89° 59' 58" E	12.5000	N 89° 59' 58" E
13	N 89° 59' 58" E	12.5000	12.5000	N 89° 59' 58" E	12.5000	N 89° 59' 58" E	12.5000	N 89° 59' 58" E
14	N 89° 59' 58" E	12.5000	12.5000	N 89° 59' 58" E	12.5000	N 89° 59' 58" E	12.5000	N 89° 59' 58" E
15	N 89° 59' 58" E	12.5000	12.5000	N 89° 59' 58" E	12.5000	N 89° 59' 58" E	12.5000	N 89° 59' 58" E
16	N 89° 59' 58" E	12.5000	12.5000	N 89° 59' 58" E	12.5000	N 89° 59' 58" E	12.5000	N 89° 59' 58" E
17	N 89° 59' 58" E	12.5000	12.5000	N 89° 59' 58" E	12.5000	N 89° 59' 58" E	12.5000	N 89° 59' 58" E
18	N 89° 59' 58" E	12.5000	12.5000	N 89° 59' 58" E	12.5000	N 89° 59' 58" E	12.5000	N 89° 59' 58" E
19	N 89° 59' 58" E	12.5000	12.5000	N 89° 59' 58" E	12.5000	N 89° 59' 58" E	12.5000	N 89° 59' 58" E
20	N 89° 59' 58" E	12.5000	12.5000	N 89° 59' 58" E	12.5000	N 89° 59' 58" E	12.5000	N 89° 59' 58" E
21	N 89° 59' 58" E	12.5000	12.5000	N 89° 59' 58" E	12.5000	N 89° 59' 58" E	12.5000	N 89° 59' 58" E

**U.S. HIGHWAY #1**  
(SEE PLAN)

**GRAPHIC SCALE**  
1 inch = 40 feet

Prepared by: SCOTT & ASSOCIATES  
5400 EAST COLONIAL DRIVE  
ORLANDO, FLORIDA 32817  
PHONE (407) 277-3222 - FAX (407) 858-7428