

RESOLUTION NO. 2017 - 352

A RESOLUTION BY THE BOARD OF COUNTY COMMISSIONERS OF ST. JOHNS COUNTY, FLORIDA, AUTHORIZING THE COUNTY ADMINISTRATOR, OR DESIGNEE, TO PURCHASE AND TO EXECUTE A PURCHASE ORDER FOR TWO NEW 2018 BRAUN AMBULANCES

RECITALS

WHEREAS, the County seeks to purchase of two (2) 2018 Braun Ambulances; and

WHEREAS, in accordance with section 302.6.5.4 of the St. Johns County Purchasing Manual, entitled "Piggyback or Cooperative Purchasing", the County is authorized make said purchase subject to the terms and conditions of Florida Sheriff's Association, Florida Association of Counties & Florida Fire Chief's Association Contract #FSA16-VEF12.0 ("Contract"); and

WHEREAS, purchase of the ambulances will be funded by the EMS Department and Fire impact Fees; and

WHEREAS, the County has reviewed the terms, provisions, conditions and requirements of the Contract and finds that entering into the Contract for purchase of the ambulances serves a public purpose.

NOW, THEREFORE BE IT RESOLVED BY THE BOARD OF COUNTY COMMISSIONERS OF ST. JOHNS COUNTY, FLORIDA, as follows:

Section 1. The above Recitals are incorporated by reference into the body of this Resolution and such Recitals are adopted as finds of fact.

Section 2. The County Administrator, or designee, is hereby authorized to purchase two (2) 2018 Braun Ambulances.

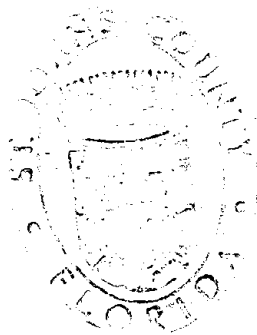
Section 3. In accordance with the terms and conditions of the Contract, the County Administrator, or designee, is further authorized to execute a purchase order in the amount of \$470,157.62 for purchase of the ambulances from Ten-8 Fire Equipment, Inc.

Section 4. To the extent that there are typographical and/or administrative errors that do not change the tone, tenor, or concept of this Resolution, then this Resolution may be revised without subsequent approval by the Board of County Commissioners.

PASSED AND ADOPTED by the Board of County Commissioners of St. Johns County, Florida, this 7th day of November, 2017.

ATTEST: Hunter S. Conrad, Clerk

By: *Ram Hatterman*
Deputy Clerk



BOARD OF COUNTY COMMISSIONERS OF ST. JOHNS COUNTY, FLORIDA

By: *[Signature]*
James K. Johns, Chair

REVISION DATE



September 22, 2017

Deputy Chief David Reams
St. John's County Fire Service
3657 Gaines Road
St. Augustine, FL 32084

RE: Two (2) Braun 2018 Chief XL Rescue Ambulances w/ 2017 Ram Chassis

Chief Reams,

Thank you for your support of Ten-8 Fire Equipment and Braun Industries for the purchase of additional rescues. We are pleased to offer the following quote for your consideration.

Final Quote

(2) Two 2018 Braun Chief XL Type I Rescue/Ambulance on the 2017 Ram Chassis per your current design and specifications

Unit Price: \$235,078.81

Total x2 = \$470,157.62

Per Florida Sheriff's Association Bid FSA 16-VEF12.0 (Extended to 3-31-18)

This quote is per your existing units currently in production with the Change Notice 8, 9 and 10 compliant. Note the changes on the drawings.

We appreciate the opportunity to provide this quote. Should you have any additional questions, comments or requests please feel free to contact me. We look forward to working with you again.

Sincerely,
Wayne Stowell
Wayne Stowell
727-746-7442

Ten-8 Fire Equipment
2904 59th Ave. Dr. E.
Bradenton, FL 34203
www.ten8fire.com



St. John's County Fire Rescue
Braun Chief XL Ram
Florida Sheriff's Association Bid FSA16-VEF12.0
(April 6, 2016 to March 31, 2017 Extended to March 31, 2108)

P/N	DESCRIPTION	
20-10-0103	Liquid Spring Suspension	\$ 3,050.00
20-10-0209	Battery Three "D" series	\$ 804.00
20-20-0126	Floor Console Angled Removable Plates	\$ 950.00
20-SP-0001	Aluminum Rims for Chassis	\$ 1,492.00
30-10-0012	Air Horns- Buell Dual Trumpets	\$ 1,860.00
30-10-0073	Camera Patient Area	\$ 542.00
30-10-0262	Inverter Vanner 1050 Watt	\$ 1,448.00
30-10-0412	OSS Compartment Lights LED rope	\$ 578.00
30-10-0431	Step Well Lights	\$ 116.00
30-10-0738	Refrigerator - Norcold	\$ 1,726.00
30-11-0104	Grote Dimmable Dome Lights	\$ 2,771.00
30-25-0201	Running board - Whelen Mini-LED lights	\$ 198.00
30-25-3114	Whelen Grill Lights Total (4)	\$ 359.00
30-27-4151	Lights Above Rub Rail	\$ 287.00
40-09-0164	Zico SCBA Holders	\$ 352.00
40-10-0030	Dock Bumpers	\$ 181.00
40-10-0100	Rubber Fenderettes	\$ 252.00
40-10-0386	Vehicle ID Placards	\$ 225.00
40-10-0506	Rear Sliding Windows	\$ 251.00
40-SP-0001	Battery Compt. To Streetside	\$ 892.00
41-01-0207	OSS #1 Streetside Forward Transverse Backboard Storage	\$ 1,719.00
42-01-0202	OSS #2 Streetside Center Modifications	\$ 1,102.00
43-01-0204	OSS #3 Streetside Rear Double Doors	\$ 3,321.00
43-02-0112	OSS #3 Compt. Three Shelves	\$ 430.00
43-03-0102	OSS #3 Fixed Divider	\$ 284.00
43-04-0102	OSS #3 Slide Out Board	\$ 1,345.00
44-01-0208	OSS #4 Right Rear Compt.	\$ 1,641.00
45-01-0203	OSS #5 Outside Storage Curbside Forward	\$ 1,855.00
50-10-0112	Upper Cabinet Rear #1 Restocking	\$ 289.00
50-10-0230	Upper Cabinet Over Panel #2 Restocking	\$ 241.00
50-10-0303	Left Wall Cabinet Modifications for Medvault	\$ 2,209.00
50-30-0137	Squad Bench Cabinet	\$ 889.00
50-41-0203	Hoseline 125 V/12V Combination AC unit	\$ 6,822.00
50-50-0001	Squad Bench w/Bolsters CN8 Compliant	\$ 1,801.00
50-50-0105	Attn Child Safety Seat with 4-Pt. Harness	\$ 477.00
50-50-0316	CPR Seat CN8 compliant	\$ 1,060.00
50-60-0709	Sharps and Trash Squad Bench	\$ 310.00
50-51-2002	Cabinet Doors Lexan	\$ 143.00
50-60-0030	Assist Handles "V" Stainless Steel	\$ 102.00
50-60-0097	Clock Trin Tec	\$ 86.00
50-60-0437	Cast IV Hangers	\$ 194.00
50-60-0590	Net Squad Bench	\$ 210.00
50-60-0166	Customer Supplied Performance Load Cot Fastner credit	\$ (773.00)



Shop Order

Exp. Date: 09/29/2017
 Quote No: 10021-0001
 AMB I: 18CHXLI

Chief XL 2018 Type I MOD 169"

09/22/2017

Printed by: Jessicam

Page 1

FUNCTION 1	PART NO	S	QTY	DESCRIPTION
			1	== Chief XL 2018 Type I MOD 169" - 18.200 06/29/17 ==
		S	1	KKK FEDERAL SPECIFICATION REQUIRED
	00-01-0051		1	NO REQUIRED DELIVERY DATE
			1	No Specific Required by Delivery Date
			1	KKK CHANGE NOTICE 8 REQUIRED
	00-01-0053		1	PRECONSTRUCTION MEETING NOT REQUIRED / REQUESTED
			1	The purchaser and / or end user does not wish to request a Pre-Construction meeting with the manufacturer.
	00-01-0062		1	LEAD TIME DEFINED
			1	PLEASE NOTE: Vehicle lead time is established upon date of accepted order and receipt of chassis.
	00-01-0091		1	REQUIRED REMAINING EQUIPMENT PAYLOAD:
			1	The required remaining equipment payload for this unit is: _____
	00-01-0242		1	TYPE I - AMBULANCE - CHIEF XL I - 72" INTERIOR HEADROOM
			1	2018 CHIEF XL I - 169" MODULE
	10-04-0045		1	CHASSIS - 2018 RAM 4500 192.5" WB 4X2
	15-00-0004		1	YES CUSTOM CHASSIS REQUIRED
			1	SPECIAL CHASSIS QUOTED
	15-00-0061		1	ALUMINUM WHEELS - INCLUDED WITH CHASSIS
			1	Aluminum wheels shall be ordered with the chassis. These will include the hub, hat and lug covers.

FUNCTION 1			DESCRIPTION
PART NO	S	QTY	
15-SP-0001	XS	1	2017 RAM CHASSIS CURRENTLY ON THE GROUND Customer will be using an existing 2017 Ram chassis currently on the ground at Braun
20-10-0103		1	SUSPENSION - LIQUID SPRING Liquid Spring STD
20-10-0112	S	1	INBOARD ARM RESTS FOR ALUMINUM CONSOLE Install inboard arm rests in the cab. (arm rests Havis Shields C-ARM-102 mount to the aluminum floor console) Reference truck 5875
20-10-0209	X	1	BATTERY - THREE SYSTEM - D SERIES CHASSIS Install an additional battery to make a total of three (3). Third battery is to be isolated (T636 Isolator) and wired for the electronics and radios within the unit. Battery to be charged from the chassis. Battery to be installed in battery compartment beneath OSS#1. The two (2) standard batteries will be installed under the hood.
20-10-0209	XS	1	BATTERY - TWO SYSTEM - D SERIES CHASSIS Install an additional battery to make a total of three (3). Third battery is to be isolated and wired for the electronics and radios within the unit. Battery to be charged from the chassis. Battery to be installed in battery compartment beneath OSS#1. T636 Isolator and additional battery same as previous unit The two(2) standard batteries will be installed under the hood.
20-20-0126	XS	1	FLOOR CONSOLE - ANGLED FRONT - REMOVABLE PLATES - ALUMINUM A center floor console manufactured out of aluminum and covered in a black onyx zolatone. The console shall include a Flat area for the Weldon Vista display on a hinged adjustable mount. The lower portion of the console shall consist of a flat area that shall contain the siren, two (2) drink holders. The map storage area is to have a removable plate and is to run all the way to the rear of the console. The console face plates shall be removable for accessibility and serviceability. A map storage area is to be fabricated attached to rear of the console and go over the OEM plastic tray. Two (2) air horn push button switches shall be installed toward the front of the console next to the driver's seat and passenger's seat per attached layout.
20-20-0241		1	CHASSIS HEADLINER SUPPORT Verify that there is foam located between the chassis headliner and roof to minimize cab roof flex. If needed install the Ram approved foam per work instructions.
20-40-0208		1	OEM WHEELS - WITH VALVE STEM EXTENSIONS Delete the Stainless Steel Wheel liners, Keep Valve Extensions and OEM wheels.
20-SP-0001	XS	1	ADD SECOND COMPRESSOR A second compressor will be added to the engine thus allowing the OEM cab system and Modular AC system to operate independently.

FUNCTION 1	PART NO	S	QTY	DESCRIPTION
				ELECTRICAL SYSTEM FEATURES
	30-06-0076	S	1	MASTER CONTROL CONSOLE (MCC) - MULTIPLEX ELECTRICAL SYSTEM
	30-06-0126	X	1	ELECTRICAL COMPARTMENT (PDO) - MULTIPLEX ELECTRICAL SYSTEM Relocated per dwg #7 due to transverse backboard storage.
	30-06-0410		1	WARNING LIGHTS FLASH PATTERN SIGNAL ALERT 75 - MULTIPLEX ELECTRICAL SYSTEM The default flash pattern for the vehicle warning lights shall be Signal Alert 75.
	30-10-0012	X	1	AIR HORNS - BUELL DUAL TRUMPETS 10" & 12", UNDR BMPR W/SW Air Horn - (Buell) dual trumpets, one (1) 10" and one (1) 12", mounted under front bumper, one each side, compressor w/cover in OSS #1 located per dwg #3. The air horns shall be activated by a one (1) push button switch located on the MCC (master control console). See Dwg #1
	30-10-0071		1	CAMERA REAR VIEW - SINGLE SYSTEM - VISTA SCREEN Install camera system rear view, tied to M-Tech display screen. Per Dwg #2
	30-10-0073		1	CAMERA PATIENT AREA SINGLE SYSTEM - VISTA SCREEN Install camera system to monitor the patient compartment, tied to M-Tech display screen. See Dwg #8
	30-10-0262	XS	1	INVERTER, VANNER - 1050 WATT, #20-1050CUL-DC CHARGER Vanner 20-1050CUL 1050-DC watt inverter with battery conditioner/charger, w/remote switch - non-hardwired shall be installed in OSS #2 with a diamond plate protective cover per dwg. #3.
	30-10-0291		1	LIGHT, ATTENDANT CONTROL PANEL AREA - LED - WARM WHITE A Techniq Silho-X 2.75" round warm white LED light with SS trim ring, shall be mounted above the left wall forward action area counter. The light shall be operated through the a button on the ACP Vista screen labeled "Attendant Light" (Braun #26415)
	30-10-0412		1	LIGHT OSS COMPARTMENT - LED ROPE Each outside storage compartment shall be equipped with LED rope lighting which shall be located across the top and down both sides of the door opening, IPOS. This includes all 5 OSS compartments (not the battery compartment)
	30-10-0431	X	1	LIGHT, STEPWELL - CURBSIDE DOORWAY - 2" LED SURFACE MNT Two (2) Lights, stepwell - side doorway, Whelen 2" LED (#18105 with surface mount flange #27190). See Dwg #7
	30-10-0534	XS	1	OUTLETS, 125VAC - FOUR (4) INTERIOR DUPLEX Two (2) shall be installed in the primary action area. Located per dwg. #5. One (1) shall be installed in the lower front wall cabinet #1. Located per dwg. #7. One (1) shall be installed in the cab console. It is to be located on the side of the console on the passenger side.
	30-10-0560	XS	1	OUTLETS, 12VDC - THREE (3) INTERIOR POWERPOINT Two (2) shall be installed in the primary action area. Located per dwg. #5.

FUNCTION 1	PART NO	S	QTY	DESCRIPTION
				One (1) shall be installed in the lower front wall cabinet #1. Located per dwg. #7. All 12V outlets are to be battery hot.
	30-10-0657		1	RADIO ANTENNA BASES - TWO (2) Two (2) antenna bases with attached coax cables shall be installed on the module roof. The coax cables shall terminate in the P.D.Q. Access to the antenna bases shall be through adjacent module interior dome lights.
	30-10-0721		1	RECEPTACLE SHORELINE INLET-20 AMP, NON-AUTO EJECT Install 20 amp manual (non-auto eject) shoreline receptacle. IPOS
	30-10-0738	X	1	REFRIGERATOR - NORCOLD 1.7 CU FT BUILT-IN Install an aisle facing, Nor-Cold refrigerator in upper cabinet at rearward end of squad bench IATS, per dwg. # 6. Install Medico lock on aluminum plate to secure. Install thermometer on fridge, surface mount and drill hole and run wire inside for probe. Thermometer to be Grainger 2L YX2/Miljoco CD104684-60W Thermometer) to be installed per dwg. #6 location. This will have a fridge vent to the right of the fridge as well per dwg #6. Make sure the refrigerator stays hot.
	30-10-0814		1	SIREN SPEAKERS, WHELEN SA315 - IN THE BUMPER OPENING Whelen dual 100 watt siren speakers shall be installed in the bumper opening.
	30-10-0901	X	1	SYSTEM ACTIVE AND CHECK OUT LIGHTS - 5 MINUTES Relocated IPOS per dwg #6.
	30-11-0101		1	LIGHTS, DOME LED (8) TECNIO Eight (8) Techniq LED (E08-LC20-1) dome lights, shall be installed. Per dwg #9
	30-11-0104	X	1	LIGHTS, DOME LED (7) Grote Dimmable Install 7(seven) Grote #61E61 LED Lights IPOS in ceiling to be Dimmable activated by a multi-level switch on the vista screen and activate on with check out lights per dwg #9.
	30-11-0152		1	LIGHTS, TECNIO LED PANEL (3) STREETSIDE - ANGLED Three (3) Techniq (E30-L010-1) 21 LED lights streetside (Braun #27469). See Dwg #5
	30-11-0155	X	1	LIGHTS, DELETE LIGHTS ON PANEL STREETSIDE - ANGLED Delete angled Techniq LED lights from the streetside per dwg. #5.
	30-11-0176		1	LIGHTS, TECNIO LED PANEL (2) CURBSIDE - ANGLED Two (2) Techniq (E30-L010-1) 21 LED lights curb side (Braun #27469). See Dwg #6
	30-11-0176	X	1	DELETE LIGHTS, TECNIO LED PANEL (2) CURBSIDE - ANGLED Delete Angled Techniq LED lights from curbside per dwg #6

FUNCTION 1	PART NO	S	QTY	DESCRIPTION
				EXTERIOR LIGHTING
	30-25-0122	1	1	LIGHTS, ICC / LED CLEARANCE - ON MODULE FRONT - TECNIQ The vehicle shall have five (5) amber Techniq LED (S33-AA00-1) clearance / ICC lights on the front of the module near the roof line. Per Dwg #1
	30-25-0123	1	1	LIGHTS, ICC / LED CLEARANCE - ON MODULE REAR - TECNIQ The vehicle shall have five (5) red TECNIQ LED (S33-RR00-1) clearance / ICC lights on the rear of the module near the roof line. Per Dwg #2
	30-25-0201	1	1	LIGHTS, RUNNING BOARD - WHELEN MINI - LED (1) EACH SIDE Light, Running Board - (Whelen) mini LED, one (1) white cluster on each side, 1ATS. Lights to operate with the cab door switches.
	30-25-3114	1	1	LIGHTS, FRONT GRILLE - (4) WHELEN 700 SUPER LED - RED W/CLR LENS Install two (2) additional Whelen 700 red LED lights w/clear lens, making a total of four (4) installed. All with clear lens IPPOS Lights to flash in an X pattern.
	30-25-4201	1	1	LIGHTS, FRONT MODULE - WHELEN (7)900 - (6)RED, (1) CLEAR LED W/CLEAR LENS Seven (7) Whelen 900 series super LED lights with chrome flanges shall be installed on the module front. There shall be six (6) red and one (1) center clear light. All lights to have clear lens IPPOS
	30-26-3002	1	1	LIGHTS, REAR TAIL - WHELEN 600 LED STOP, TURN, HALOGEN BK-UP One (1) pair each of Whelen 600 series led stop/tail lights, turn lights, and halogen back-up lights with chrome bezels shall be installed on the rear of the module. (meets SAE)
	30-26-5101	1	1	LIGHTS, REAR WINDOW-LEVEL - WHELEN (2)900 LED - RED W/CLR LENS Two (2) Whelen 900 series red super LED lights w/clear lenses and chrome flanges shall be installed on the rear of the module at window level, one (1) on each side. Per dwg #2
	30-26-6168	1	1	LIGHTS, REAR MODULE - WHELEN (5)900, (2)RED, (1)AMB LED, (2)HALO SCN CLR L Two (2) Whelen 900 series red super LED lights w/clear lens, two (2) Whelen 900 series halogen scene/load lights, and one (1) Whelen 900 series amber super LED light w/clear lens shall be installed on the rear of the module w/chrome flanges IPPOS. See dwg #2
	30-26-7002	1	1	LIGHT, LICENSE PLATE LED
	30-27-1102	1	1	LIGHTS, ICC / LED CLEARANCE - ON MODULE SIDE - TECNIQ The vehicle shall have two (2) Techniq (S330) red mini LED marker lights : one (1) red on each side at the rear of the vehicle which will also flash with turn signal. Per Dwg #3 and #4
	30-27-1102	X	1	LIGHTS, WHELEN 70BTT RED DOT TURN IPPOS ICC The vehicle shall have two (2) red LED Whelen 70BTT with clear lens in place of the clearance / ICC lights with chrome bezels : one (1) red on each side at the rear of the vehicle which will also function with the turn signals. Per Dwg #3 and #4

FUNCTION 1	PART NO	S	QTY	DESCRIPTION
	30-27-1114		1	LIGHTS, INTERSECTION FRONT - WHELEN 700 SUPER LED - RED W/CLR LENS Two (2) Whelen 700 series red super LED warning lights, with clear lens and water-proof connectors shall be mounted, in 15 degree tilt housings on the front chassis fenders, one (1) on each side.
	30-27-2007		1	LIGHTS, SIDE MODULE SCENE - WHELEN 900 HALOGEN - CLEAR (4) Four (4) Whelen 900 series (gradient optics) halogen scene lights with chrome flanges shall be installed, two (2) each module side, inboard of the warning lights.
	30-27-3009		1	LIGHTS, SIDE MODULE WARNING - WHELEN 900 SUPER LED - RED W/CLR LENS Four (4) Whelen 900 series red super LED warning lights with clear lenses and chrome flanges shall be installed, two (2) each module side, outboard of the side module scene lights. Per dwg #3 & #4
	30-27-4115		1	LIGHTS, INTERSECTION REAR - WHELEN 700 SUPER LED - RED W/CLR LENS Two (2) Whelen 700 series red super LED warning lights with clear lenses, chrome flanges and water-proof connectors, shall be installed above the rear wheel wells, one (1) on each side Per Dwg #3 & #4
	30-27-4151		1	LIGHTS, ABOVE RUB RAIL - TECNO LED - 4 EACH SIDE Light Package - Tecno-LED lights shall be installed above the rub rail. Four (4) LED's each side, two (2) white LED's and two (2) red LED's equally spaced along the module side, for a total of eight (8) lights. (Red-White-Red White on each side)The LED mini clusters shall alternate flash with box warning lights.
	39-10-0003	X	1	CONNECTIONS, MODULE STANDARD
	40-00-0019		1	MODULE FEATURES / EXTERIOR DOOR SKINS, OUTSIDE STORAGE COMPARTMENTS - DIAMOND PLATE INTERIOR SKINS The interior door skins for all outside storage compartments shall be constructed of .063" thick aluminum diamond plate.
	40-09-0164	S	1	ZICO SCBA HOLDERS KD-UH-6-SF (#23891) TWO (2) Two (2) Zico SCBA KD-UH-6-SF (#23891) holders shall be provided and installed in OSS2
	40-09-0164	X	1	ZICO SCBA HOLDERS TWO (2) Two (2) SCBA mounting brackets installed on reinforced back wall of OSS #2. (Delete the standard adjustable shelf and install two (2) Zico KD-UH-U-6 SCBA mounting brackets for MSA 30 Min bottles with spring release). Per dwg. # 3.
	40-10-0030		1	DOCK BUMPERS, REAR Install rear dock bumpers.
	40-10-0100		1	FENDERETTES - RUBBER Install Black Rubber Fenderettes IPOS

FUNCTION 1	PART NO	S	QTY	DESCRIPTION
	40-10-0120		1	HOLD-OPEN - REAR DOORS - GRABBERS Door grabbers (1 pair) with hard rubber inserts shall be installed on the rear doors. Reference dwg #2 for location.
	40-10-0151		1	SWITCH UNLOCK, WATERPROOF - HIDDEN IN FRONT GRILLE AREA An exterior hidden door unlock switch shall also be included and located in the front grille area.
	40-10-0189		1	LOCKS POWER - PASSAGE COMPARTMENTS, KEY FOBS Install power door locks on module passage doors, and (5) OSS compartments, use OEM key fobs.
	40-10-0386	S	1	VEHICLE ID PLACARDS (Total 3) One (1) located forward on the curb side of the module on OSS #5 per dwg #4 One (1) located on the rear of the module on rear passage door per dwg#2 The placards are to be painted to match the color of the unit and to be 12" x 12" with the unit number decal installed. The number(s) on the placard to be reflective without shadow. Unit number is 12 with locations per dwgs2, 3, and 4.
	40-10-0506		1	WINDOWS, PASSAGE DOOR - (CURB SLIDING, REAR SLIDING) Install sliding windows with screens in rear doors IPOS
	40-SP-0001	X	1	BATTERY COMPARTMENT Install a battery compartment below OSS #1 per dwg. #3 dimensions. This will shorten the OSS #1 compartment. 3rd battery will be installed in this compartment. Per dwg. #3.
	41-01-0207	X	1	OUTSIDE STORAGE #1 - STREETSIDE FORWARD -Modified and transverse BB storage OSS #1 has been modified (height) due to the relocation of the battery compartment. OSS #1 is to be built per dwg. #3 dimensions. Transverse backboard storage to OSS#5 to have (2) sections with one divider (chute dimensions 17.50"W x 19" ID x 74") - Install strap across transverse opening. Install (2) adjustable shelves above chute. Exposed shelf track to stop at the top of the transverse storage area in OSS#1. Per dwg. #3.
	42-01-0202	X	1	OUTSIDE STORAGE #2 - STREETSIDE CENTER - MODIFIED Delete the standard adjustable shelf Install two (2) SCBA brackets on reinforced back wall, Zico KD-UH-6-SF per dwg #3
	42-02-0054	X	1	DELETE SHELF TRACK - EXPOSED - OSS #2 Delete exposed shelf track in OSS #2
	42-02-0056		1	SHELF TRACK - EXPOSED - OSS #2 Install a "T" grooved exposed shelf track in OSS #2 (Exposed tracks will be welded in place and coated with Gatorhyde material for a cleaner look and no exposed fasteners)

FUNCTION 1	PART NO	S	QTY	DESCRIPTION
	42-02-0107	X	1	DELETE - SHELF ONE (1) IN OSS #2 Delete one (1) adjustable shelf in OSS #2.
	42-02-0107		1	SHELF ONE (1) IN OSS #2 Install one (1) adjustable shelf in OSS #2.
	43-01-0204	X	1	OUTSIDE STORAGE #3 - STREETSIDE REAR - DOUBLE DOORS / OXYGEN STORAGE Relocate oxygen to OSS #3 and provide storage for Dual "M" tanks on a slide out board with Zico QR-MV brackets. Vertical divider next to O2 slide out (3) Adjustable shelves forward of the divider. A fixed shelf 8" above floor below slider for storage for (2) "D" cylinders below slide out oxygen. An oxygen vent on right side of door per dwg #3. The "M" tanks shall be able to be switched enroute from the interior in case runs low. Provide and install two (2) oxygen regulators with "T" to main O2 line so customer can switch between bottles without removing a regulator.
	43-02-0051		1	SHELF TRACK - EXPOSED - OSS #3 Install exposed shelf track in OSS #3. (Exposed tracks will be welded in place and coated with Gatorhyde material for a cleaner look and no exposed fasteners)
	43-02-0112		1	SHELVES THREE (3) IN OSS #3 Install three (3) adjustable shelves in OSS #3.
	43-03-0102	X	1	DIVIDER, FIXED - ONE (1) IN OSS #3 Install one (1) fixed divider in OSS #3 per dwg. #3.
	43-04-0102	X	1	TRAY (1) SLIDE OUT BOARD W/TREMPRO LINING OUTSIDE STORAGE #3 Install one (1) slide-out board to hold two (2) "M" oxygen cylinders in OSS #3. Per dwg #3
	44-01-0208	X	1	OUTSIDE STORAGE #4A RT. REAR - MODIFIED Compartment has been modified (height & width) and is to be built per dwg. #4 dimensions due to the oxygen being relocated to OSS#3. Delete Backboard/Scoop storage. Compartment is to be full depth and enclosed with double doors and equipped with one (1) adjustable shelf IPOS using exposed shelf tracks per dwg. # 4.
	45-01-0203	X	1	OUTSIDE STORAGE #5 - CURBSIDE FORWARD OSS#5 shall have a transverse backboard storage to OSS#1 with inside/ outside access to lower front wall cabinet IPOS per dwg. #3, #4 and #7. Install a strap across transverse opening. Maintain the (2) standard adjustable shelves upper portion on the lower front wall cabinet per dwg #7.
	50-01-0407	X	1	MODULE INTERIOR / PATIENT COMPARTMENT FEATURES LATCHES CABINET - CHROME / STAINLESS STEEL Install chrome locking lever latch on ACP, PDQ as well as front wall #1 and #2. Install Southco stainless steel locking flush pull latches on #3 and #4 Pull-out Drug Storage Drawers other interior drawers and doors.

FUNCTION 1	PART NO	S	QTY	DESCRIPTION
	50-01-0408		1	LATCHES, CABINET, CN10 COMPLIANT AS APPLICABLE Install latches per drawings.
	50-10-0108		1	PACKAGE / LEFT WALL CABINETS
	50-10-0112	X	1	CABINET - LEFT WALL, UPPER REAR #1 - RESTOCKING HINGE (UP)-MODIFIED Left wall cabinet #1 has been modified (length and width) due to the deletion of the angled lights and is to be built per dwg. #5 dimensions. Cabinet is to have fixed center divider with one (1) adjustable shelf each side of the divider. Cabinet is to be enclosed by a set of sliding lexan doors that are attached to a flip-up restocking frame. Per dwg. #5.
	50-10-0116		1	CABINET - LEFT WALL, UPPER REAR #1 - FIXED FRAME The cabinet shall contain a center fixed divider with one (1) adjustable shelf on each side.
	50-10-0229	X	1	LEFT WALL - ATTENDANT CONTROL PANEL - HINGED PANEL - MODIFIED The color micro processor screen shall be installed on an angled hinged access panel and secured with two (2) latches. The panel will be located to the immediate right of the attendant's seat. The forward flat portion of the panel has been deleted. Per dwg. #5.
	50-10-0230	X	1	CABINET - LEFT WALL, UPPER OVER PANEL #2 RESTOCKING HINGE-MODIFIED Left wall cabinet #2 has been modified (length and height) due to the installation of the flush mounted Knox Medvault and relocation of the ACP panel along with the relocation of the angled lighting in the ceiling. Cabinet is to be built and installed per dwg. #5 dimensions. Cabinet will not have an adjustable shelf. Cabinet is to be enclosed by a set of sliding lexan doors that are attached to a flip-up restocking frame. Per dwg. #5.
	50-10-0233		1	CABINET - LEFT WALL, UPPER OVER PANEL #2 - FIXED FRAME The cabinet shall contain a center fixed divider with one (1) adjustable shelf on each side.
	50-10-0303	X	1	CABINET LEFT WALL UPPER #3 - MEDVAULT Install a flush mounted MEDVAULT with wiff to be located in the upper front street side wall per dwg. #5.
	50-10-0342	X	1	CABINET - LEFT WALL, LOWER REAR #3 - INSIDE/OUTSIDE DELETE - CABINET - LEFT WALL, LOWER REAR - INSIDE/OUTSIDE Delete the lower street-side rear inside/outside cabinet, per dwg #5
	50-10-0421	X	1	LEFT WALL CABINET #4 Install left wall cabinet #4 per dwg. #5 dimensions and location. Cabinet is to have one (1) adjustable shelves. Cabinet is to be enclosed by a set of sliding lexan doors attached to a flip-up restocking frame. Per dwg. #5.
	50-10-0422		1	CABINET # 4 - LEFT WALL - REAR ACTION AREA An interior cabinet unit (#4) shall be installed under the second action area on the interior left wall of the module. The door opening shall be 11.75" high x 13.25" wide with interior dimensions of 13.50" high x 15.00" wide x 17.25" deep. The compartment shall be enclosed by one (1) set of sliding acrylic doors and

FUNCTION 1	PART NO	S	QTY	DESCRIPTION
				equipped with one (1) adjustable shelf.
	50-10-0522	X	1	CABINET #5 IN PLACE OF THE DRAWER ASSY- LEFT WALL - REAR ACTION AREA-MODIFIED Install left wall cabinet #5 per dwg. #5 location and dimensions. This will delete the two (2) drawer unit that opens into the CPR seat. Cabinet is to have one (1) adjustable shelf. Cabinet is to be enclosed by a set of sliding lexan doors attached to a flip-down restocking frame. Per dwg. #5.
	50-10-0602	X	1	PRIMARY ACTION AREA - MODIFIED The primary action area has been modified (length) and is to be built per dwg. #5 dimensions.
	50-10-0634	X	1	DELETE SECONDARY ACTION AREA Secondary action area has been deleted per dwg #5.
	50-10-0705	X	1	DRAWER - SLIDE-OUT / WRITING TABLE STREETSIDE INTERIOR DELETE DRAWER - SLIDE-OUT / WRITING TABLE STREETSIDE INTERIOR Delete slide-out drawer/writing table from streetside per dwg #5
	50-20-0145		1	CABINET - FRONT WALL, UPPER #1 This cabinet shall be enclosed by one (1) set of sliding acrylic doors. The compartment shall contain one (1) adjustable shelf.
	50-20-0145	X	1	DELETE CABINET - FRONT WALL, UPPER Delete upper front wall cabinet, due to heat/ac change/location
	50-20-0279	X	1	CABINET - FRONT WALL, LOWER #1 - INSIDE/OUTSIDE ACCESS Install lower front wall cabinet #1 shortened to accommodate transverse backboard compartment located below IPQS, per dwg #7. Cabinet shall be enclosed with a single right hinged .5" thick LEXAN door IPQS, per dwg #7. The door shall be secured with (2) two locking lever latches (1 upper/1 lower located on left side). Rubber bumpers shall be provided on the cabinet. Ref# #6715 / #6716 / 7124 / 7125
	50-20-0289		1	CABINET - FRONT WALL, LOWER #2 & #3 - INSIDE/OUTSIDE ACCESS Front wall lower cabinets #2 & #3: The front wall lower cabinet (#2): inside/outside access / (1) adjustable shelf on Unistrut adjustable track brackets/ (1) clear light mounted in a removable panel / aluminum beveled ramp edging installed on two edges of each shelf / (1) pair of hinged aluminum doors with polycarbonate inserts/ full length hinge and center squeeze latches / (1) 12VCD power point outlet and (1) 125VAC outlet located in upper right hand corner of cabinet. The front wall lower cabinet (#3): inside/outside access / (1) adjustable shelf on Unistrut adjustable track brackets / (1) clear light mounted in a removable panel / aluminum beveled ramp edging installed on two edges of each shelf / (1) pair of hinged aluminum doors with polycarbonate inserts/ full length hinges and center squeeze latches.

FUNCTION 1	PART NO	S	QTY	DESCRIPTION
	50-20-0387	X	1	DELETE STD CABINET - FRONT WALL, LOWER BELOW PDQ (SINGLE VENTED DOOR) Deleted standard cabinet due to transverse backboard storage.
	50-20-0507 50-30-0111	X	1	PASS THROUGH - CAB TO MODULE, WINDOW OPENING DELETE CABINET - RIGHT WALL, REAR WITH (1) DOOR FACING AISLE #1 Cabinet has been deleted. Per dwg. #6.
	50-30-0114		1	CABINET - RIGHT WALL, REAR WITH (1) DOOR FACING AISLE #1 A storage compartment (#1) shall be provided to the rear of the squad bench / constructed of .125" thick aluminum/ face the patient compartment aisle/ (4) adjustable shelves/ hinged aluminum door with center squeeze latches.
	50-30-0137	X	1	CABINET - RIGHT WALL, #1 & #2 ABOVE SQUAD BENCH Cabinets are to be installed on curbside above seating area per dwg #6 dimensions. Cabinets are to have lift-up lexan doors with hold open and secured by locking stainless steel flush pull latches.
	50-41-0203		1	HEAT/AIR CONDITIONING, PROAIR 4X4 AC/HEAT CORE Install ProAir IW-3856 with 4x4 AC/Heat Core in the upper front wall.
	50-41-0203	X	1	HEAT/AC 125V/12V COMBINATION UNIT FT-454 W/TMC2007 CONDENSER Heat & A/C - FT-454 dual voltage 125v/12v with no heat strip unit includes CM3000 thermostat located per dwg. #5, 20 amp manual eject shoreline, and dual TMC 2007 condenser mounted on front of module. Unit is to have a APS-253 ultraviolet light system. Condenser is to be painted to match the module. Install an painted aluminum protective brush cover on bottom and top of the condenser per dwg. #1. 125 Volt AC electrical components with protective diamond plate covers will be in OSS#2 per dwg #3.
	50-41-0210 50-50-0001	X	1	** NO CONDENSER - HOSELINE TMC 2007, MODULE FRONT MOUNT ** SEATING - EVS CUSHION ASSEMBLIES W/V4 HARNESSSES A Squad bench seat with two (2) individual seating positions will be EVS cushion assembly with V4 harnesses and cushions to meet CN8 requirements. Install belts/retractors for second patient transport per dwg. #6.
	50-50-0027		1	SEATING - SQUAD BENCH BASE W/ STORAGE CN8 COMPLIANT VALOR A-VAL BACK A squad bench seat with two (2) individual seating positions and two (2) VALOR A-VAL shelf mount back frames with internal bolsters will be installed on the curb side of the patient compartment (2) seat belts with (4) point / (4) retractors single click internal mount belt system. The VALOR A-VAL shelf mount back frames and the bench padded and covered with cushioned, color coordinated, cut and sewn vinyl. A storage area in the squad bench base under the lift up cushion. The squad bench base shall be constructed of .090" thick aluminum / interior of the squad bench sprayed with sound absorbing

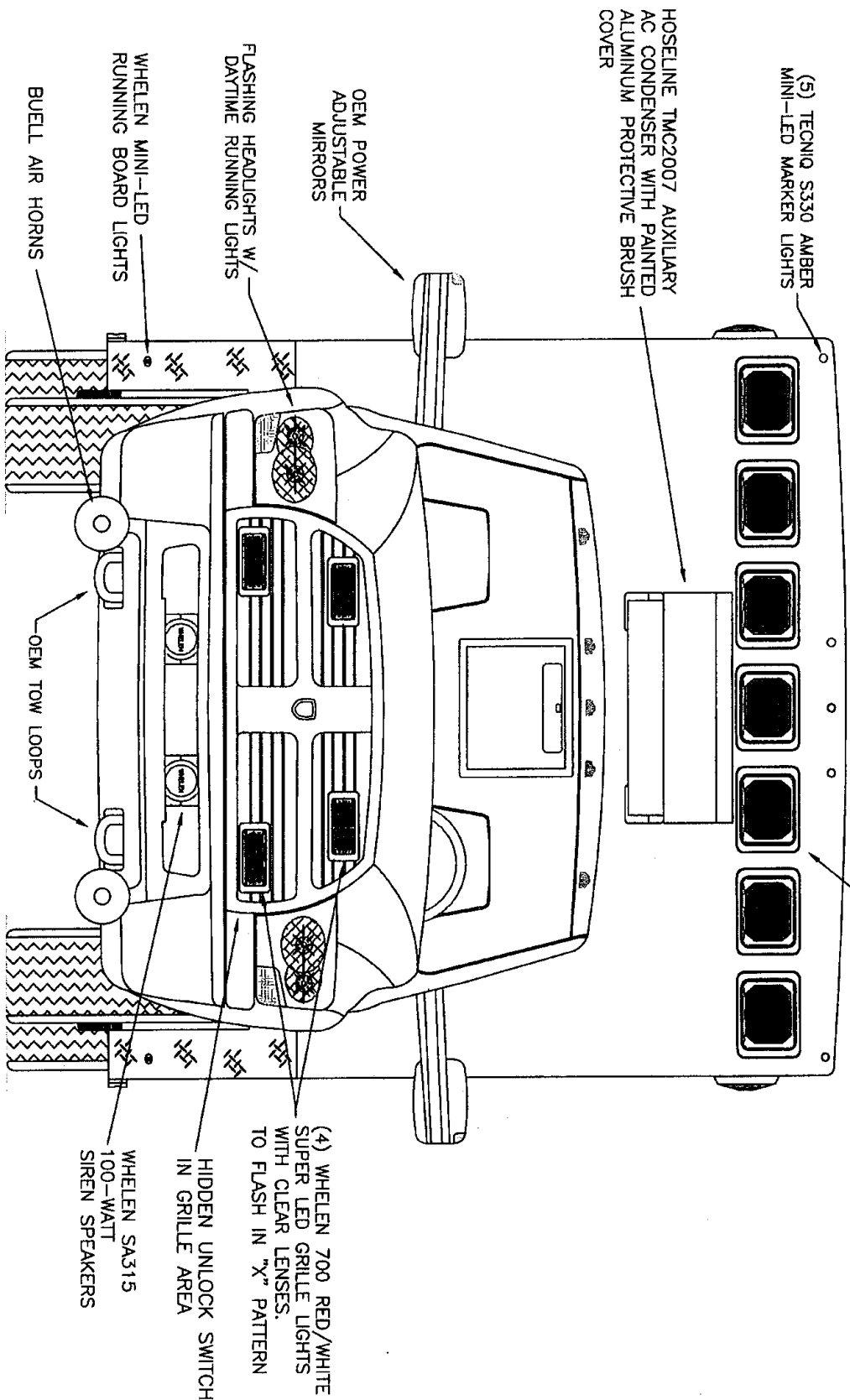
FUNCTION: 1	PART NO	S	QTY	DESCRIPTION
				polyurethane material.
	50-50-0118		1	ATTENDANT SEATING ATTN SEAT - USSC VALOR R - BACK INTEGRAL CHILD, SWIVEL SEAT CN8 COMPLIANT A USSC Valor rear facing, Rback attendant seat with an integrated child seat installed at the head of the patient cot: a (2) position swivel seat mounted on a pedestal base with a heavy duty seat frame / ABTS (All Belts To Seat) application with (4) point / (4) retractors single click internal mount belt system. The seat shall be padded and covered with sewn matching antimicrobial vinyl upholstery.
	50-50-0316	X	1	CPR SEAT USSC VALOR CUSHION AND STORAGE BELOW A CPR seat shall be installed on the street side of the patient compartment aft of the main action area counter USSC VALOR cushion assembly with V4 belting harness and cushions to be CN8 compliant. Seat cushion should lift up and provide storage below. An automatic latching fastener shall be installed to secure the CPR lid in the closed position. Per dwg #5
	50-50-0522	X	1	PACKAGE SQUAD BENCH SQUAD BENCH LID - NO SHARPS AND TRASH ACCESS Delete Sharps and Trash access thru the lid. Sharps and Trash drawer added IPOS see 50-60-0709
	50-51-1001		1	CABINET CONSTRUCTION - INTERIOR - ALUMINUM RECESSED ADJUSTABLE SHELF TRACK - CABINETS Install recessed adjustable shelf track in cabinets.
	50-51-2002		1	CABINET DOORS - CLEAR ACRYLIC Install Clear acrylic on cabinet doors IPOS
	50-51-2002	X	1	CABINET DOORS - CLEAR LEXAN Install Clear Lexan on cabinet doors IPOS
	50-51-3001		1	CABINETS/ WALLS - POLYCHROMATIC COATING - MARBLE STONE Headliner, walls, cabinet faces, and cabinet interiors MultiSpec color to be #99-7371 Marble Stone
	50-51-4011		1	COUNTER TOP - SOLID ACRYLIC - RAVEN BOULDER (BLACK) A Megarite solid acrylic counter top, Raven Boulder (black) #810,
	50-51-5001		1	UPHOLSTERY - SPRADLING "ARCTIC" CHARCOAL #9017 All cushions, head pads and seating surfaces shall be covered with Spradling International "Arctic" Charcoal # 9017 expanded vinyl upholstery material.
	50-51-6003		1	LONPLATE II, NON-SLIP EMBOSSED SM. GRID - GUNMETAL #424 The floor in the patient compartment shall be covered with Lonseal brand "Lonplate II" non-slip, small grid (embossed) Gunmetal #424.

FUNCTION 1	PART NO	S	QTY	DESCRIPTION
	50-58-0000		1	COT MOUNT FASTENERS
			1	COT MOUNT / FASTENER FEATURES **CN8 COMPLIANT** STD
	50-60-0017		1	OPTIONAL PATIENT COMPARTMENT ITEMS
			1	ASPIRATOR / SUCTION - SSCOR - WITH ELECTRIC PUMP - COUNTER
			1	An SSCOR suction system shall be installed on the action wall counter near the attendant's seat. The 12 VDC SSCOR electric vacuum pump to be installed in the standard OSS compartment. (must use SSCOR pump and tubing)
	50-60-0030	X	1	ASSIST HANDLES, (2) 1/2" STAINLESS STEEL
			1	A total of two (2) stainless steel "V" assist handles shall be provided: two (2) 1-1/4" diameter stainless steel "V" handles, one (1) on each rear passage door. Per dwg. #8.
	50-60-0097		1	CLOCK - TRIN TEC, 8" 12/24 HR, QUARTZ BATTERY - REAR HEADPAD
			1	Install a Trin Tec battery operated, 12/24 hour clock in the headpad above the rear doors.
	50-60-0161		1	COT FASTENER - STAT-TRAC SINGLE - CENTER POSITION CN8 COMPLIANT
			1	Install a 96" Stat-Trac single position center mount
	50-60-0166	X	1	COT FASTNER-CUSTOMER SUPPLIED POWER LOAD
	50-60-0325		1	DELETE - GLOVE, DISPENSER - (3) BOX - CURBSIDE ABOVE DOOR
			1	Delete the glove box (3) dispenser above the curbside door.
	50-60-0351		1	GRAB RAILS, 1-1/4" DIAMETER, (96") OVER COT & (64") SQ BENCH
			1	Install 64" stainless steel grab rail over the squad bench area IATS
	50-60-0431		1	I V HANGERS - CEILING RECESSED - CAST PRODUCTS #IV2008-1 (2)
			1	Two (2) Cast Products #IV2008-1 recessed, dual ceiling I.V. hangers shall be provided per Dwg #9 locations.
	50-60-0435	X	1	I V HANGERS - PERKO TWO (2), WITH VELCRO STRAPS
			1	Install two (2) Perko #1309 I.V hooks and straps IATS. One (1) shall be installed on the street side forward of the #2 cabinet per dwg #5. One (1) shall be installed on the curbside above the squad bench per dwg #6.
	50-60-0437	X	1	I V HANGERS - CEILING RECESSED - CAST PRODUCTS #IV2008-1 (4)
			1	Two (2) additional Cast Products #IV2008-1 recessed, dual, ceiling I.V. hangers shall be provided and installed IATS. Located per dwg #9
	50-60-0590		1	NET, SQUAD BENCH - CURBSIDE INTERIOR (RED)
			1	Net, Squad Bench - red shall be installed at the head of the squad bench.
	50-60-0612		1	OXYGEN OUTLETS (3) WALL - OHIO MEDICAL TYPE
			1	Relocate one (1) oxygen outlet from the ceiling to the left wall forward action area next to the standard outlet.

FUNCTION 1	PART NO	S	QTY	DESCRIPTION
	50-60-0640	X	1	OXYGEN SYSTEM, ELECTRIC - MULTIPLEX ELECTRIC SYSTEM Install a total of two (2) oxygen bypasses that are to be located on the primary action area wall per dwg. #5. Reference unit #7124.
	50-60-0681	X	1	RADIO SPEAKERS, REAR HEADPAD (OEM RADIO FADER CONTROL) Two (2) stereo speakers shall be installed in the rear head pad. The fader control for the rear speakers shall be in the cab radio.
	50-60-0709	X	1	SHARPS AND TRASH-SQUAD BENCH Install a sharps/waste drawer at the head of bench IPQS. Drawer opens to aisle and secured with stainless steel flush pull locking latch, Squad bench with (2) USSC VALOR V4 Harness seating positions. Belts/ retractors installed for second patient transport per dwg. # 6. (Extends the squad bench cushion with storage below bench cushion)
	50-60-0730		1	DOOR PANELS - MODULE PASSAGE DOORS - FULL LENGTH ALUMINUM - W/ACCESS PANELS Interior rear and curbside passage door panels to be full length aluminum, Multi-Spec sprayed to match interior color and contain removable latch access panel per dwg. # 6 & # 8. (Total 3).
	60-01-0001		1	PAINT PROCEDURE
	60-01-0002		1	PAINT MODULE - OEM WHITE Paint module OEM white to match the chassis
	60-01-0005		1	STANDARDS AND SPECIFICATIONS FOR VEHICLE PAINT APPEARANCE
	60-10-0110	X	1	PAINT - MODULE The entire module shall be sprayed one-color and then clear coated. The PPG paint code is 911659 Red.
	60-10-0170	X	1	PAINT CAB Cab is to be painted per the attached layout. The PPG paint code is 911659 Red.
	60-20-0303	X	1	CHEVRON STRIPING - PERIMETER - NO DOORS Red/Yellow Reflexite chevron striping 6" wide shall be installed on the perimeter of the rear module, not on the doors.
	60-25-0101		1	Included with graphics package under #60-SP-0001 BLACK REFLECTIVE MATERIAL IN RUB RAILS Install black reflective material in rub rails.
	60-SP-0001	X	1	PAINT AND GRAPHICS - SPECIAL OPTION please use graphics and paint scheme same as unit #6715-16

FUNCTION 1	PART NO	S	QTY	DESCRIPTION
				See #60-10-0110, #60-10-0170-10 and 60-SP-0001
	PR-CS-0000	X	1	BRAUN CONCESSION
	SE-99-0002	X	1	HANSON ASSIST HANDLES Install (5) Austin # AE9-01228 polyurethane door assist handles IPOS. Two (2) at rear doors, two (2) at curbside door, and one (1) on curbside door, per dwgs.
	SP-99-0002	X	1	PREWIRES (3) 12V Three (3) 12v prewires shall be installed in the module. One (1) at the cab floor console, one (1) at the ACP in the primary action area and one (1) for a customer installed thermal imaging camera on back wall of OSS2.
	SP-99-4001	X	1	Buss Bar Install one (1) 30 Buss bar in the PDQ IATS.
	SP-99-4012	X	1	Cabinet, Drawer Curbside (2) Install (2) pull out drawers at the rearward end of the squad bench opening towards aisle. Drawers, per dwg #6. dimensions. Drawers secured with stainless steel Southco locking latches and an additional cylinder key lock (1) # KV-70 on each drawer IATS, per dwg. # 6. Both drawers to lock in the out position using locking drawer slides.
	SP-99-4014	X	1	Cabinet, Drop down, pass thru Install a solid acrylic counter top beneath the pass through opening. This is due to the build out from the transverse back board storage. Countertop colors are to match the street-side countertop colors. Install a cabinet above the pass through opening. Cabinet is to be built and located per dwg. #7 dimensions. Cabinet is to be enclosed by a drop down LEXAN door. Door is to be secured with a locking lever latch. Per dwg. #7.

DIMENSIONS FOR OVERALL HEIGHT AND LENGTH ARE APPROXIMATE
 OVERALL HEIGHT = 110"
 OVERALL WIDTH WITH RUB
 RAILS & FENDERLETTS = 98"



THIS DRAWING IS FOR REPRESENTATIONAL PURPOSES ONLY. DETAILS ARE CONCEPTUAL AND ARE SUBJECT TO CHANGE DURING DESIGN AND CONSTRUCTION. DIMENSIONS ARE APPROXIMATE UNLESS NOTED OTHERWISE TO MEET A SPECIFIC CUSTOMER NEED.

ST. JOHN'S COUNTY

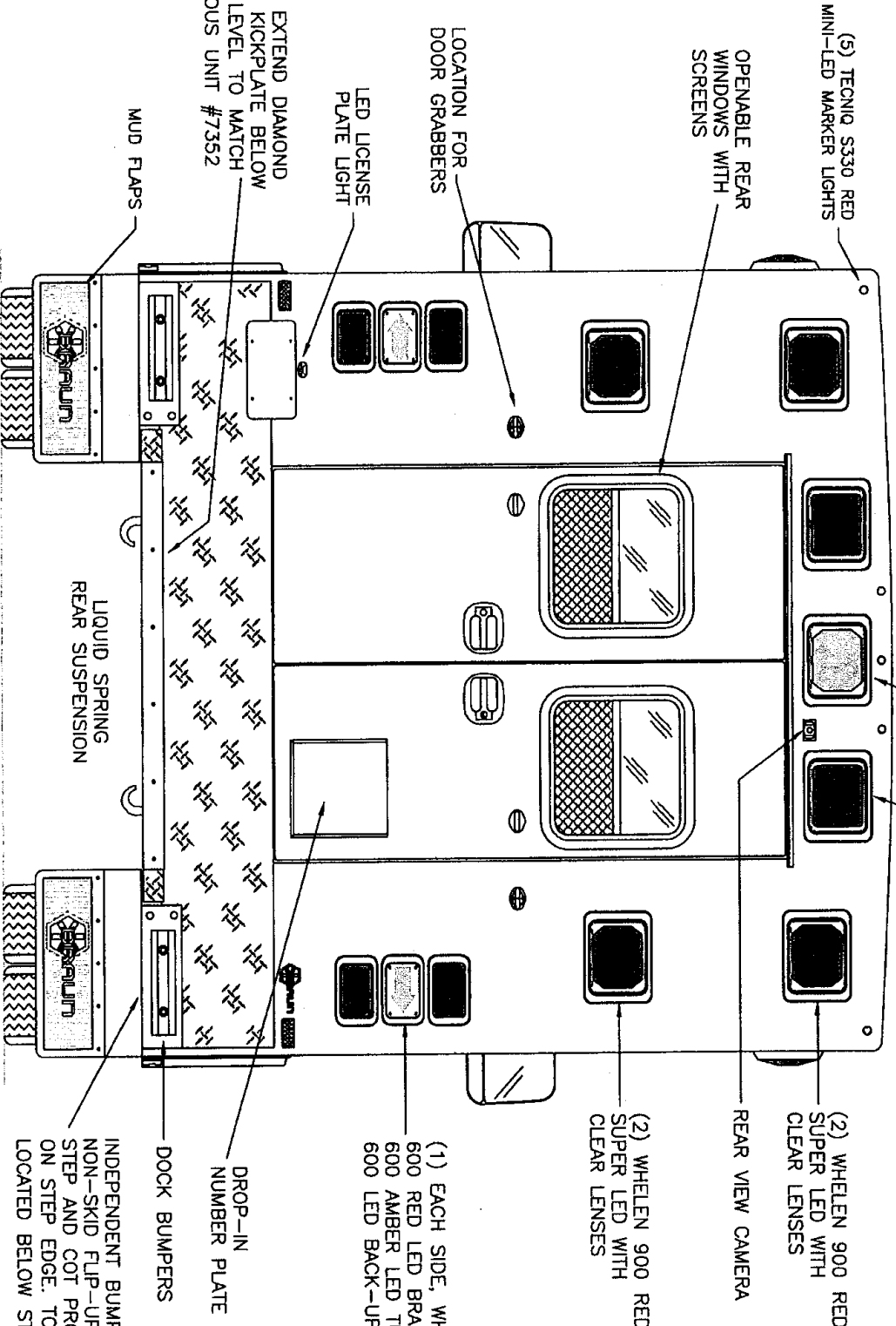


2018 FRONT EXTERIOR VIEW
 CHIEF XL-1/RAM 4500 CHASSIS

APPROVAL SIGNATURES:

DATE	8-30-17	DRAWING NO.	ST JOHNS-1
DWG.	GLF	REV.	NR
DATE	1:17		

DIMENSIONS FOR OVERALL HEIGHT AND LENGTH ARE APPROXIMATE
 OVERALL HEIGHT = 110"
 OVERALL WIDTH WITH RUB
 RAILS & FENDERETTES = 98"



NOTE: EXTEND DIAMOND
 PLATE KICKPLATE BELOW
 STEP LEVEL TO MATCH
 PREVIOUS UNIT #7352

(1) WHELEN 900 AMBER SUPER LED WITH CLEAR LENS
 (2) WHELEN 900 24-DIODE WHITE SUPER LED LOAD LIGHTS

(2) WHELEN 900 RED
 SUPER LED WITH
 CLEAR LENSES

(2) WHELEN 900 RED
 SUPER LED WITH
 CLEAR LENSES

(1) EACH SIDE, WHELEN
 600 RED LED BRAKE/TAIL,
 600 AMBER LED TURN ARROW,
 600 LED BACK-UP

INDEPENDENT BUMPER WITH
 NON-SKID FLIP-UP CENTER
 STEP AND COT PROTECTOR
 ON STEP EDGE. TOW HOOKS
 LOCATED BELOW STEP/BUMPER.

THIS DRAWING IS FOR REPRESENTATIONAL PURPOSES ONLY. DETAILS ARE CONCEPTUAL AND ARE SUBJECT TO CHANGE DURING DESIGN AND CONSTRUCTION.
 DIMENSIONS ARE APPROXIMATE UNLESS NOTED OTHERWISE TO MEET A SPECIFIC CUSTOMER NEED.

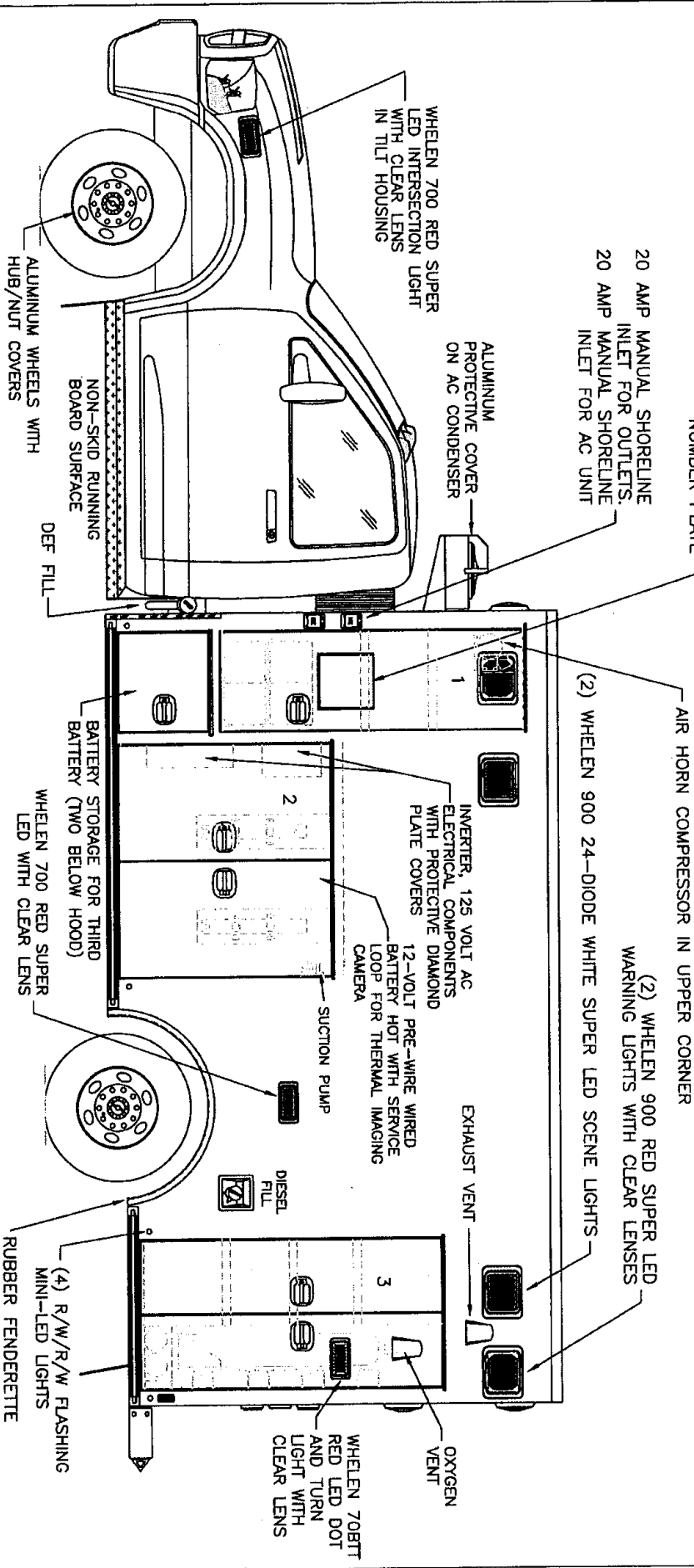
ST. JOHN'S COUNTY



2018 REAR EXTERIOR VIEW
 CHIEF XL-1/RAM 4500 CHASSIS

DATE:	8-30-17	DRAWING NO.:	ST JOHNS-2
DRW.:	GLF	REV.:	NR
SCALE:	1:16		

DIMENSIONS FOR OVERALL HEIGHT AND LENGTH ARE APPROXIMATE
 OVERALL HEIGHT = 110"
 OVERALL LENGTH = 306.5"
 MODULE LENGTH = 169"



COMPARTMENT
 O.S.S. #1
 CLEAR OPENING: 63.75h x 18.25w
 INSIDE DIM'S.: 64.75h x 22.25w x 20.75d
 17.5" WIDE x 19" TALL TRANSVERSE BACKBOARD STORAGE
 WITH (1) CENTER VERTICAL DIVIDER
 BACKBOARD OPENING TO HAVE NYLON STRAP
 (2) ADJUSTABLE SHELVES ABOVE BACKBOARDS

O.S.S. #2
 CLEAR OPENING: 44.25h x 45.75w
 INSIDE DIM'S.: 47.75h x 49.75w x 20.75d
 (2) SCBA BRACKETS ON REINFORCED BACK
 WALL OF COMPARTMENT

O.S.S. #3
 CLEAR OPENING: 63.50h x 28.25w
 INSIDE DIM'S.: 65.25h x 32.50w x 20.75d
 DUAL "M" TANKS ON SLIDE-OUT BOARD WITH
 ZICO QR-MV BRACKETS
 VERTICAL DIVIDER NEXT TO OXYGEN SLIDE-OUT
 STORAGE FOR (2) "D" OXYGEN BOTTLES
 BELOW SLIDE-OUT OXYGEN

-COMPARTMENTS TO HAVE LED ROPE LIGHTING
 THIS DRAWING IS FOR REPRESENTATIONAL PURPOSES ONLY. DETAILS ARE CONCEPTUAL AND ARE SUBJECT TO CHANGE DURING DESIGN AND CONSTRUCTION
 DIMENSIONS ARE APPROXIMATE UNLESS NOTED OTHERWISE TO MEET A SPECIFIC CUSTOMER NEED.

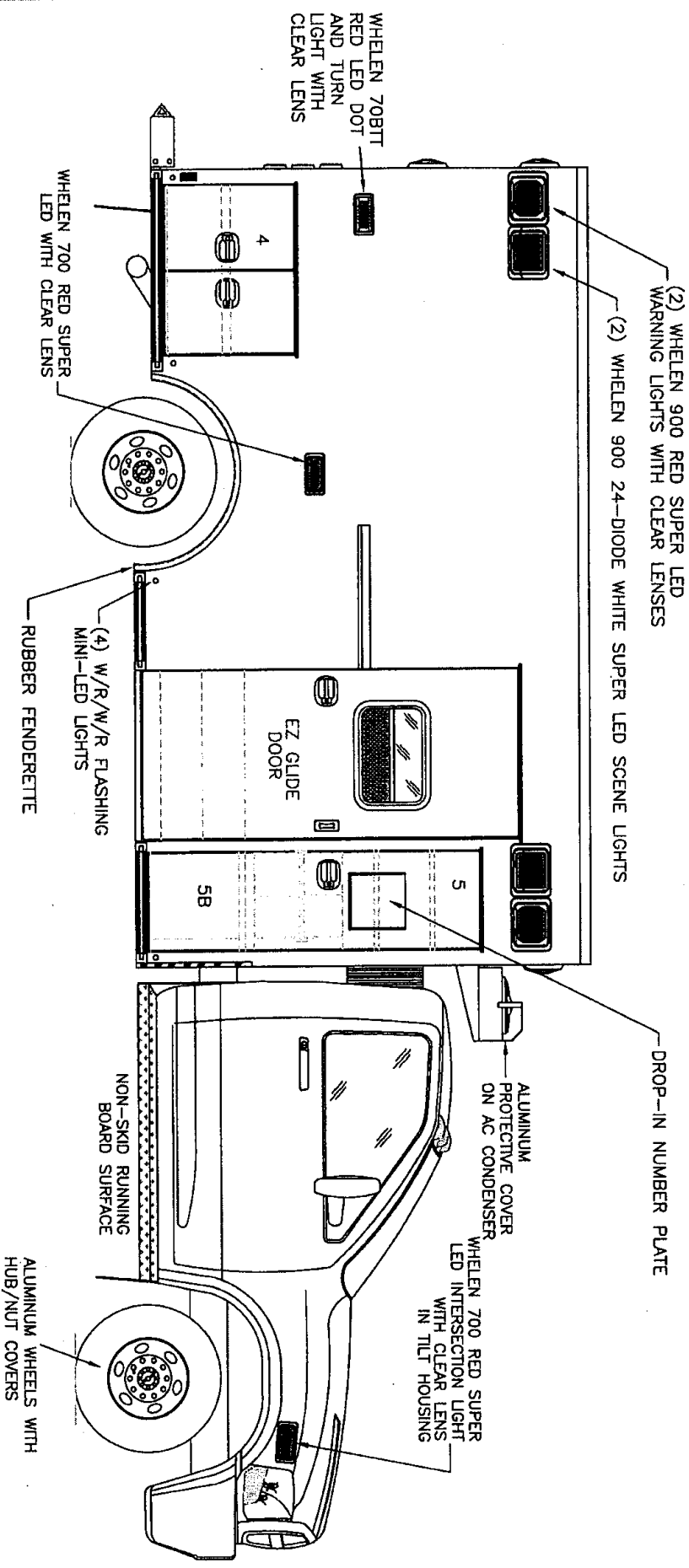
ST. JOHN'S COUNTY



2018 STREETSIDE EXTERIOR VIEW
 CHIEF XL-1/RAM 4500 CHASSIS

DATE:	8-30-17	ORGANIC NO.	ST JOHNS-3
DWG.:	GLF	REV.:	NR
SCALE:	1:30		

DIMENSIONS FOR OVERALL HEIGHT AND LENGTH ARE APPROXIMATE
 OVERALL HEIGHT = 110"
 OVERALL LENGTH = 306.5"
 MODULE LENGTH = 169"



COMPARTMENT
 O.S.S. #4
 CLEAR OPENING: 26.75h x 32.25w
 INSIDE DIM'S: 28.50h x 36.00w x 20.75d
 (1) ADJUSTABLE SHELF

O.S.S. #5
 CLEAR OPENING: 69.50h x 17.50w
 INSIDE DIM'S. 5A: SEE PARTITION INTERIOR VIEW
 INSIDE/OUTSIDE ACCESS WITH (2) ADJUSTABLE SHELVES
 17.5" WIDE TRANSVERSE BACKBOARD ACCESS WITH CENTER DIVIDER
 BACKBOARD OPENING TO HAVE NYLON STRAP
 INSIDE DIM'S. 5B: 19.00h x 20.25w x 18.00d

-COMPARTMENTS TO HAVE LED ROPE LIGHTING

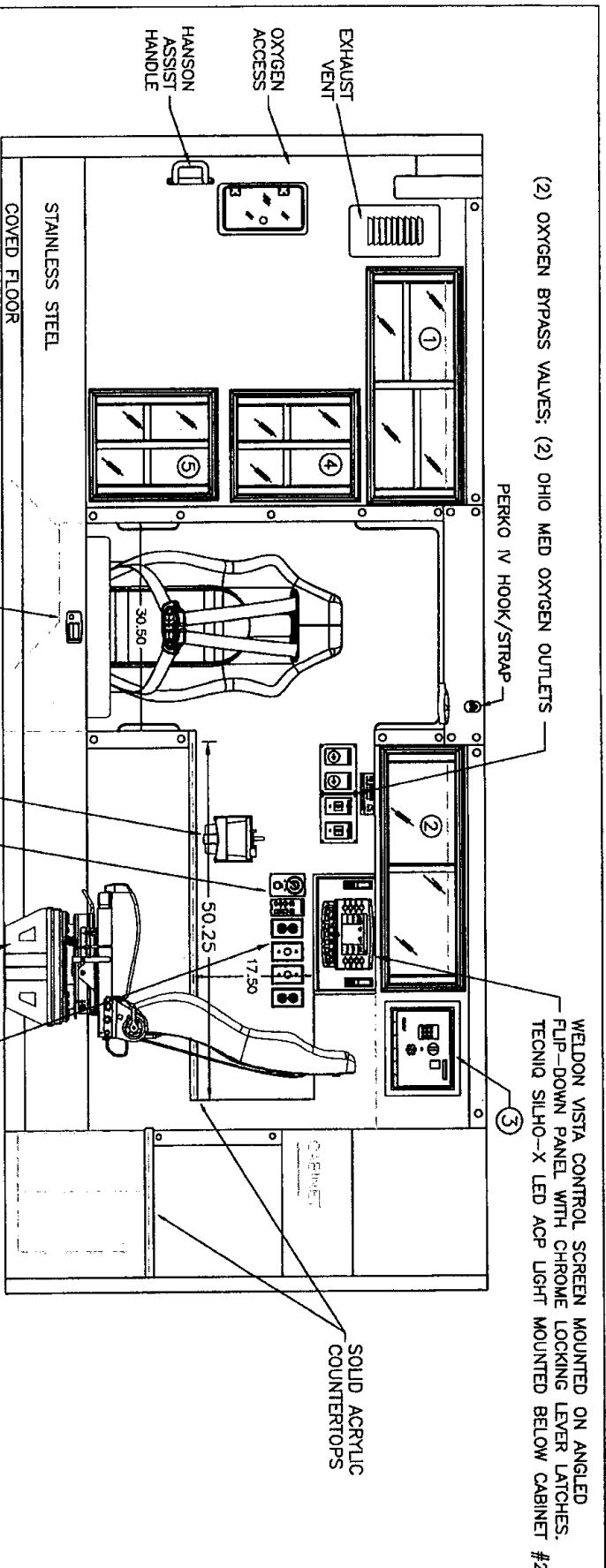
THIS DRAWING IS FOR REPRESENTATIONAL PURPOSES ONLY. DETAILS ARE CONCEPTUAL AND ARE SUBJECT TO CHANGE DURING DESIGN AND CONSTRUCTION
 DIMENSIONS ARE APPROXIMATE UNLESS NOTED OTHERWISE TO MEET A SPECIFIC CUSTOMER NEED.

ST. JOHN'S COUNTY



2018 CURBSIDE EXTERIOR VIEW
 CHIEF XL-1/RAM 4500 CHASSIS

DATE:	8-30-17	DESIGNED BY:	GLF	REVISIONS:	NR	CONTRACT NO.:	ST JOHNS-4
1:30							



COMPARTMENT

#1 DOOR OPENING: 11.75h x 32.50w
 INSIDE DIMS: 14.25h x 34.50w x 17.25d
 FIXED CENTER DIVIDER
 (1) ADJUSTABLE SHELF EACH SIDE OF DIVIDER
 SLIDING POLYCARBONATE DOORS
 STORAGE WEIGHT RATING = 25 lbs.

#2 DOOR OPENING: 10.00h x 33.50w
 INSIDE DIMS: 12.50h x 35.50w x 17.25d
 SLIDING POLYCARBONATE DOORS
 STORAGE WEIGHT RATING = 25 lbs.

#3 = FLUSH-MOUNTED KNOX MEDVAULT

#4/#5 DOOR OPENING: 16.25h x 14.00w
 INSIDE DIMS: 18.75h x 16.00w x 16.25d
 (1) ADJUSTABLE SHELF PER CABINET
 SLIDING POLYCARBONATE DOORS
 STORAGE WEIGHT RATING = 25 lbs. EACH CABINET

CABINETS TO BE ALUMINUM
 CABINETS #1, #2, #4 & #5 HAVE
 LIFT-UP RESTOCKING FRAMES
 WITH HOLD-OPENS.

THIS DRAWING IS FOR REPRESENTATIONAL PURPOSES ONLY. DETAILS ARE CONCEPTUAL AND ARE SUBJECT TO CHANGE DURING DESIGN AND CONSTRUCTION
 DIMENSIONS ARE APPROXIMATE UNLESS NOTED OTHERWISE TO MEET A SPECIFIC CUSTOMER NEED.

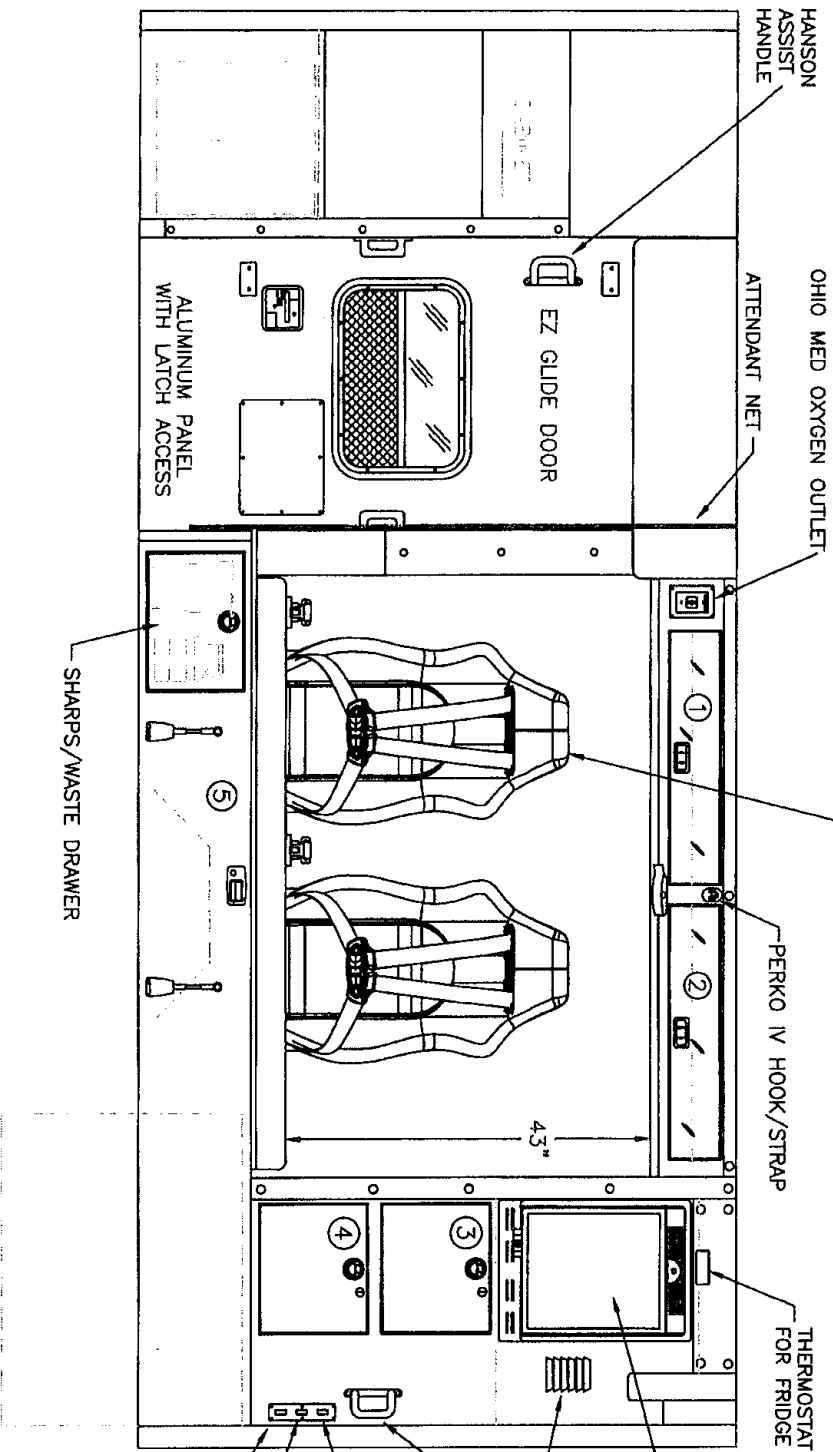
ST. JOHN'S COUNTY

2018 STREETSIDE INTERIOR VIEW

CHIEF XL-1

DATE:	8-30-17	DESIGNED BY:	ST JOHNS-5
DWG. NO.:	CLF NR	REV.:	

1:22



(2) VALOR 4pt HARNESSE SEAT BACKS, RETRACTORS
 INSTALLED FOR SECOND PATIENT TRANSPORT.

NORCOLD FRIDGE WITH
 LOCK. NOTE: FRIDGE
 OPTION IS NOT CN10
 COMPLIANT.

HANSON
 ASSIST
 HANDLE
 SYSTEM ACTIVE/
 CHECK-OUT
 SWITCH
 REAR SCENE
 DISABLE
 SUSPENSION
 DUMP DISABLE

COMPARTMENT
 #1 & #2 DOOR OPENINGS: 6.25h x 30.50w
 INSIDE DIMS: 6.25h x 30.50w x 10.50d
 LIFT-UP POLYCARBONATE DOORS WITH CENTER SQUEEZE LATCHES
 STORAGE WEIGHT RATING = 10 lbs. PER COMPARTMENT

#3-#4 PULL-OUT DRUG STORAGE DRAWERS
 INSIDE DIMS: 12.00h x 14.00w x 14.00d
 (1) SOUTHC0 STAINLESS STEEL FLUSH PULL LOCKING LATCH PER DRAWER
 (1) KY-70 CYLINDER LOCK PER DRAWER
 LOCKING SLIDES FOR OPEN POSITION
 STORAGE WEIGHT RATING = 10 lbs. PER DRAWER
 #5 = MISC. STORAGE BELOW BENCH CUSHION

CABINETS TO BE ALUMINUM

THIS DRAWING IS FOR REPRESENTATIONAL PURPOSES ONLY. DETAILS ARE CONCEPTUAL AND ARE SUBJECT TO CHANGE DURING DESIGN AND CONSTRUCTION
 DIMENSIONS ARE APPROXIMATE UNLESS NOTED OTHERWISE TO MEET A SPECIFIC CUSTOMER NEED.

ST. JOHN'S COUNTY



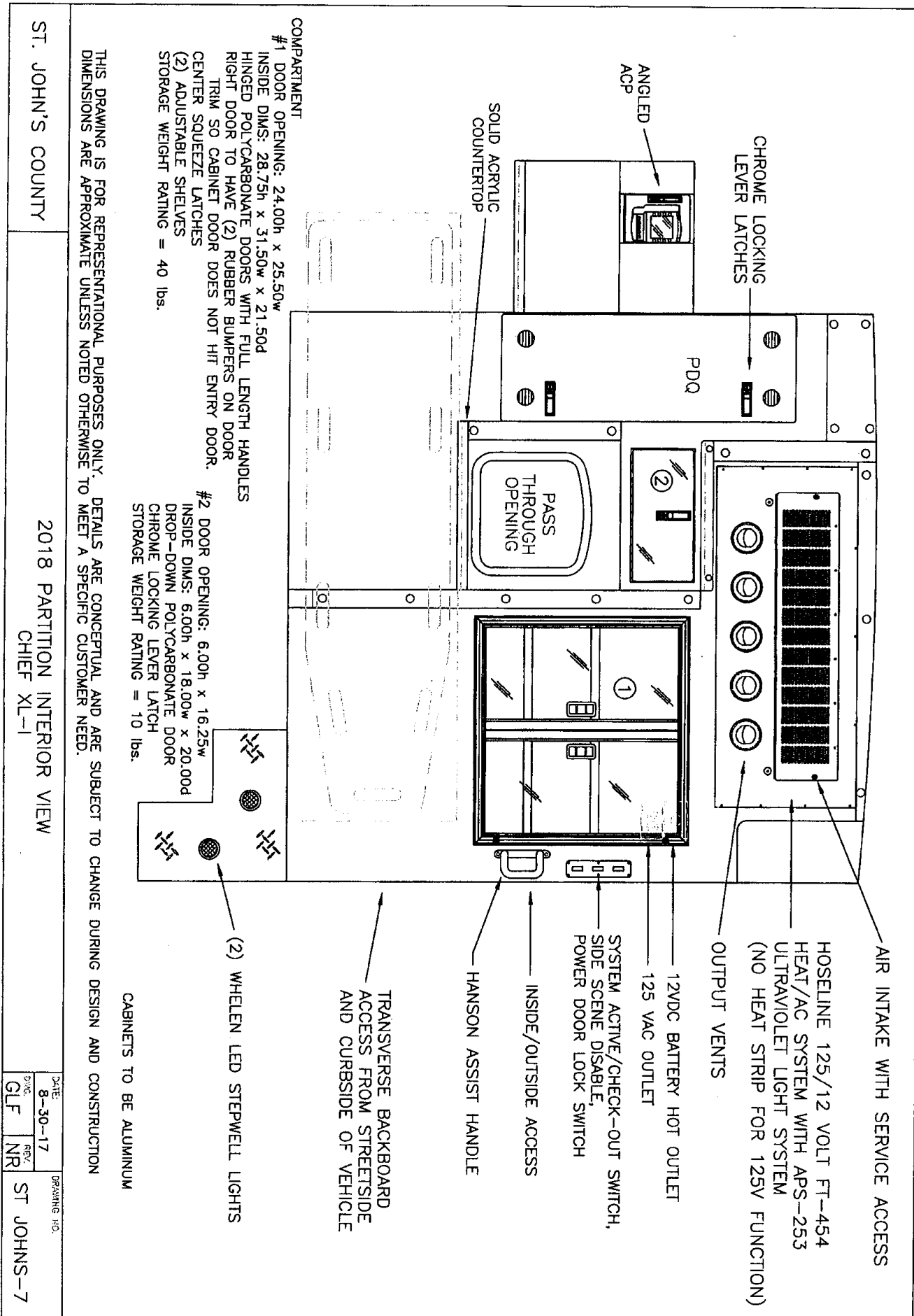
2018 CURBSIDE INTERIOR VIEW

CHIEF XL-1

1:20

DATE: 8-30-17
 DWG: GLF
 REV: NR

DRAWING NO.: ST JOHNS-6



THIS DRAWING IS FOR REPRESENTATIONAL PURPOSES ONLY. DETAILS ARE CONCEPTUAL AND ARE SUBJECT TO CHANGE DURING DESIGN AND CONSTRUCTION. DIMENSIONS ARE APPROXIMATE UNLESS NOTED OTHERWISE TO MEET A SPECIFIC CUSTOMER NEED.

COMPARTMENT
 #1 DOOR OPENING: 24.00h x 25.50w
 INSIDE DIMS: 28.75h x 31.50w x 21.50d
 HINGED POLYCARBONATE DOORS WITH FULL LENGTH HANDLES
 RIGHT DOOR TO HAVE (2) RUBBER BUMPERS ON DOOR TRIM SO CABINET DOOR DOES NOT HIT ENTRY DOOR.
 CENTER SQUEEZE LATCHES
 (2) ADJUSTABLE SHELVES
 STORAGE WEIGHT RATING = 40 lbs.

#2 DOOR OPENING: 6.00h x 16.25w
 INSIDE DIMS: 6.00h x 18.00w x 20.00d
 DROP-DOWN POLYCARBONATE DOOR
 CHROME LOCKING LEVER LATCH
 STORAGE WEIGHT RATING = 10 lbs.

CABINETS TO BE ALUMINUM

ST. JOHN'S COUNTY

2018 PARTITION INTERIOR VIEW
 CHIEF XL-1

DATE:	8-30-17	DRAWING NO:	ST JOHNS-7
BY:	GLF	REV:	NR

THIS DRAWING IS FOR REPRESENTATIONAL PURPOSES ONLY. DETAILS ARE CONCEPTUAL AND ARE SUBJECT TO CHANGE DURING DESIGN AND CONSTRUCTION. DIMENSIONS ARE APPROXIMATE UNLESS NOTED OTHERWISE TO MEET A SPECIFIC CUSTOMER NEED.

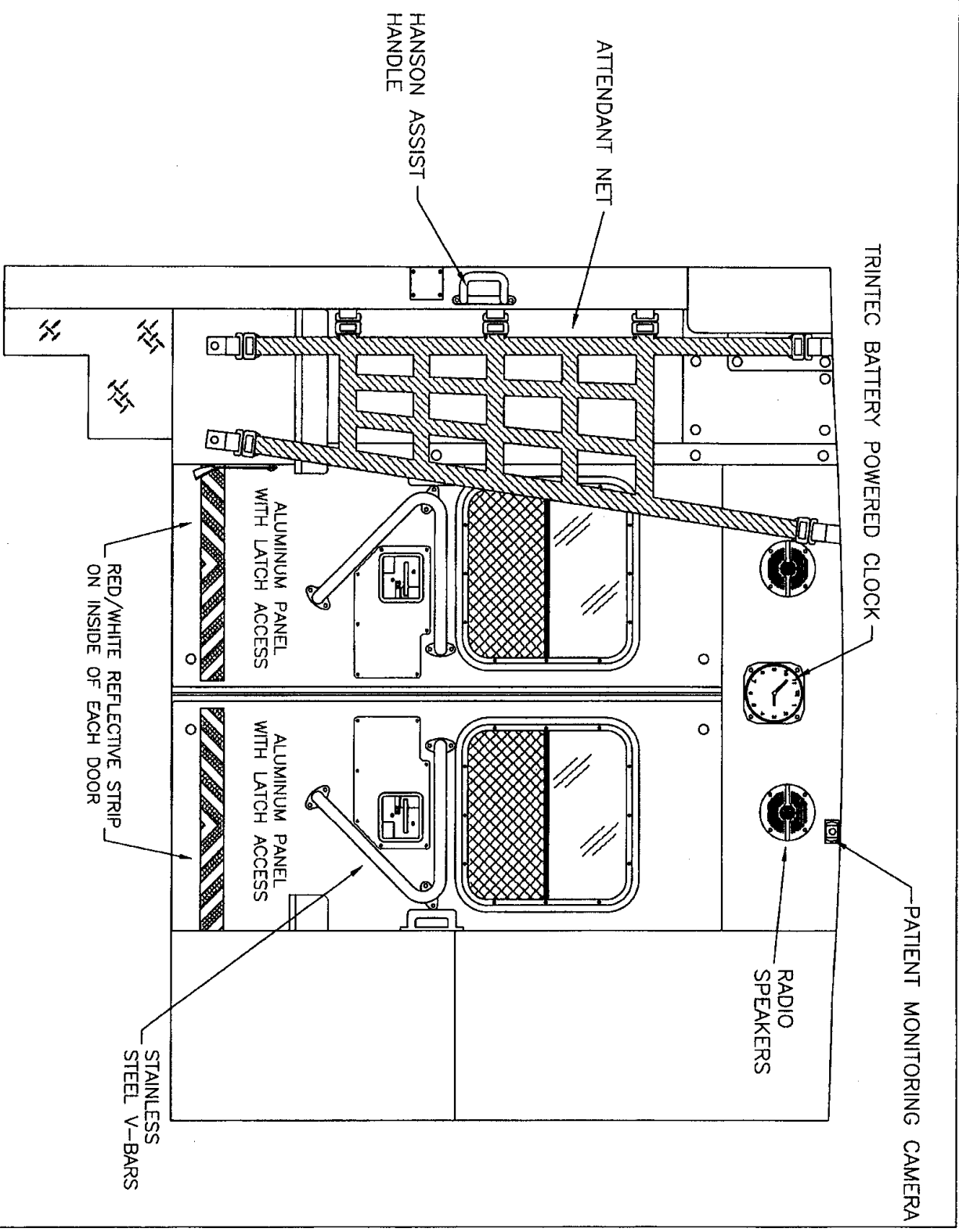
ST. JOHN'S COUNTY

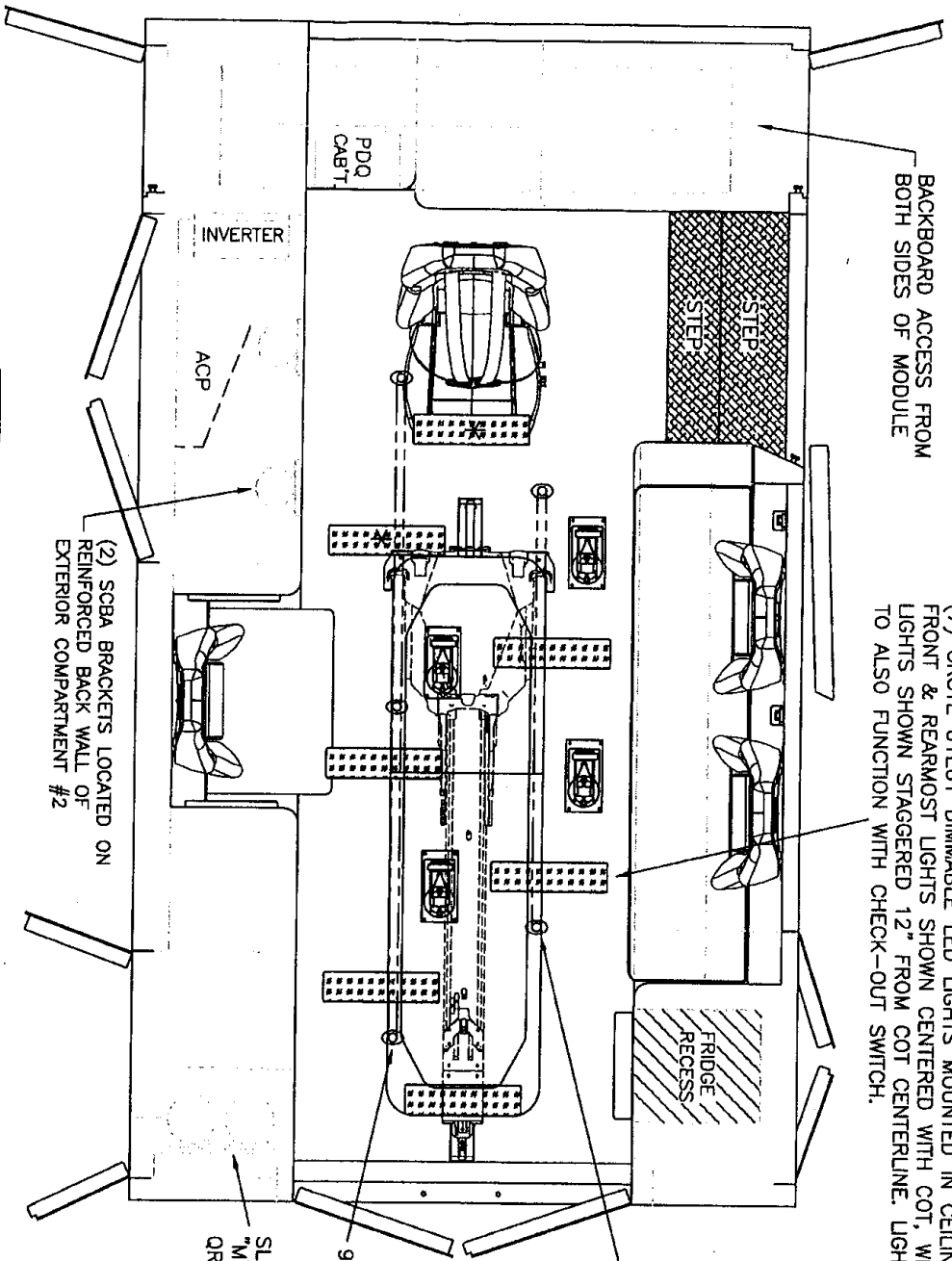


2018 REAR INTERIOR VIEW
CHIEF XL-1

1:12

DATE	8-30-17	DRAWING NO.	ST JOHN'S-8
DESIGNED BY	GLF/NR	REVISED BY	





BACKBOARD ACCESS FROM BOTH SIDES OF MODULE

(7) GROTE 61E61 DIMMABLE LED LIGHTS MOUNTED IN CEILING. FRONT & REAR MOST LIGHTS SHOWN CENTERED WITH COT, WITH REMAINING LIGHTS SHOWN STAGGERED 12" FROM COT CENTERLINE. LIGHTS TO ALSO FUNCTION WITH CHECK-OUT SWITCH.

[Symbol] = (4) RECESSED CEILING IV HANGER LOCATIONS

* = (2) ANTENNA BASES LOCATED OUTBOARD OF DOME LIGHTS WITH COAX SERVICE LOOP

(2) SCBA BRACKETS LOCATED ON REINFORCED BACK WALL OF EXTERIOR COMPARTMENT #2

SLIDE-OUT DUAL "M" OXYGEN IN ZICO QR-MV BRACKETS

96" GRAB RAIL

64" GRAB RAIL

THIS DRAWING IS FOR REPRESENTATIONAL PURPOSES ONLY. DETAILS ARE CONCEPTUAL AND ARE SUBJECT TO CHANGE DURING DESIGN AND CONSTRUCTION. DIMENSIONS ARE APPROXIMATE UNLESS NOTED OTHERWISE TO MEET A SPECIFIC CUSTOMER NEED.

CUSTOMER SUPPLIED STRYKER POWERLOAD COT SYSTEM IN CENTER POSITION

MODULE WIDTH = 96"
MODULE LENGTH = 169"
MODULE HEAD ROOM = 72"

ST. JOHN'S COUNTY



2018 FLOOR INTERIOR VIEW

CHIEF XL-1

1:22

DATE:	8-30-17
DRW:	GLF
REV:	NR

DRAWING NO.:

ST JOHNS-9

Specification #01 - Type I Ambulance - 2 Wheel Drive - 4 Wheel Drive Optional (Diesel Engine, Dual Rear Wheel,						
DEALER	MANUFACTURER	CHASSIS MAKE	CHASSIS MODEL	MODULAR BOX DIMENSIONS	BASE PRICE	
Ten-8	Braun Industries, Inc.	Ford	F350	150"x95"x72"HR	\$153,796.51	
Ten-8	Braun Industries, Inc.	Ford	F450	150"x95"x72"HR	\$163,776.18	
Ten-8	Braun Industries, Inc.	Ford	F550	169"x96"x72"HR	\$189,908.31	
Ten-8	Braun Industries, Inc.	Dodge	Ram 4500	150"x95"x72"HR	\$162,324.91	
Ten-8	Braun Industries, Inc.	Dodge	Ram 5500	169"x96"x72"HR	\$187,590.81	
Specification #02 - Type I Ambulance - 2 Wheel Drive - 4 Wheel Drive Optional (Gas Engine, Dual Rear Wheel, Ca						
DEALER	MANUFACTURER	CHASSIS MAKE	CHASSIS MODEL	MODULAR BOX DIMENSIONS	BASE PRICE	
Ten-8	Braun Industries, Inc.				NO BID	
Specification #03 - Type I Ambulance - 2 Wheel Drive Medium Duty (Dual Rear Wheel, Cab & Chassis)						
DEALER	MANUFACTURER	MODEL	MAKE	MODULAR BOX DIMENSIONS	BASE PRICE	
Ten-8	Braun Industries, Inc.	Ford	F650	170"x96"x73"HR	\$219,243.74	
Ten-8	Braun Industries, Inc.	Freightliner	M2	170"x96"x73"HR	\$240,053.86	
Ten-8	Braun Industries, Inc.	International	Durastar	170"x96"x73"HR	\$240,476.16	
Ten-8	Braun Industries, Inc.	Spartan	Metro	170"x96"x73"HR	\$526,865.60	
Specification #04 - Type II Ambulance - 2 Wheel Drive - Van						
DEALER	MANUFACTURER	MODEL	MAKE	MODULAR BOX DIMENSIONS	BASE PRICE	
Ten-8	Braun Industries, Inc.				NO BID	
Specification #05 - Type III Ambulance - 2 Wheel Drive (Diesel Engine, Dual Rear Wheel, Cab & Chassis)						
DEALER	MANUFACTURER	MODEL	MAKE	MODULAR BOX DIMENSIONS	BASE PRICE	
Ten-8	Braun Industries, Inc.	Mercedes	Sprinter	150"x85"72"HR	\$150,366.61	
Specification #06 - Type III Ambulance - 2 Wheel Drive (Gas Engine, Dual Rear Wheel, Cab & Chassis)						
DEALER	MANUFACTURER	MODEL	MAKE	MODULAR BOX DIMENSIONS	BASE PRICE	

Bids for Contracts FSA17-VEH15.0 & FSA17-VEL25.0 will be reviewed September 25-29, 2017 and awarded October 13, 2017. ✕

f (<https://www.facebook.com/floridasheriffsassociation/>) **t** (<https://twitter.com/FLSheriffs>)



FLORIDA SHERIFFS
ASSOCIATION

(<https://www.flsheriffs.org/>)

About ▼

Sheriffs ▼

Programs ▼

Publications ▼

Join Today (<https://membership.flsheriffs.org/2017-Membership-LP.html>)

Renew Membership (<https://membership.flsheriffs.org/2017-Membership-LP.html#Choose>)

PURCHASING

FIRE RESCUE VEHICLES & OTHER EQUIPMENT

Contract Number FSA16-VEF12.0

Contract Period: April 1, 2016 - March 31, 2017

Extension – April 1, 2017 – March 31, 2018

- Bid Award Summary (https://flsheriffs.sharepoint.com/Cooperative Bid Awards/_layouts/15/guestaccess.aspx?guestaccesstoken=pz6moN3elgo4klyBGHS320D5oHO%2b%2fuIN3GDdeNVaC30%3d&docid=08c004ebe717f42a28e52c6fd2de28475&rev=1&expiration=2017-10-26T21%3a45%3a41.000Z)
- Bid Support Documents (</law-enforcement-programs/cooperative-purchasing-program/fire-rescue-ems-bid-support-documents>)
- Contract Archive (</law-enforcement-programs/cooperative-purchasing-program/fire-rescue-vehicle-other-equipment-archive>)
- Contract Terms and Conditions (</uploads/FSA%20Terms%20and%20Conditions%202-26-16.pdf>)
- Vendor Directory (/uploads/docs/Fire_Rescue_EMS_Contacts.xlsx)
- Ordering Instructions (/uploads/Fire%20Bid%20Ordering%20Instructions_REV1-21-2016%281%29%281%29.pdf)
- Supplemental Contract Documents
(/uploads/docs/Nissan_Leaf_Clarification_Letter.pdf)
- Vendor Confirmation of Order - FSA16-VEF12.0
([https://www.flsheriffs.org/uploads/Confirmaton%20of%20Order%20FSA16-VEF12_0\(1\).pdf](https://www.flsheriffs.org/uploads/Confirmaton%20of%20Order%20FSA16-VEF12_0(1).pdf))
- Zone Map ([https://www.flsheriffs.org/uploads/zone%20map_v_10_15\(1\).pdf](https://www.flsheriffs.org/uploads/zone%20map_v_10_15(1).pdf))

Need Assistance?

cpp@flsheriffs.org (mailto:cpp@flsheriffs.org)

850-877-2165