

RESOLUTION NO. 2017- 6
**RESOLUTION OF THE BOARD OF COUNTY COMMISSIONERS
OF ST. JOHNS COUNTY, FLORIDA APPROVING A PLAT FOR
WHISPER CREEK PHASE 4 UNIT B.**

WHEREAS, SIX MILE CREEK INVESTMENT GROUP LLC, A DELAWARE CORPORATION TOGETHER WITH ITS SUCCESSORS AND ASSIGNS, REFERRED TO AS “SMG” AS OWNER has applied to the Board of County Commissioners of St. Johns County, Florida for approval to record a plat known as Whisper Creek Phase 4 Unit B.

NOW, THEREFORE BE IT RESOLVED BY THE BOARD OF COUNTY COMMISSIONERS OF ST. JOHNS COUNTY, FLORIDA, as follows:

Section 1. The above-described subdivision plat and its dedicated areas depicted thereon are conditionally approved and accepted by the Board of County Commissioners of St. Johns County, Florida subject to Sections 2, 3, 4, 5 and 6.

Section 2. A Required Improvements Bond in the amount of \$490,690.74 has been filed with the Clerk’s office.

Section 3. A Required Improvements Bond in the amount of \$336,477.57 will be required for maintenance.

Section 4. The approval and acceptance described in Section 1 shall not take effect until the Clerk has received a title opinion, certificate, or policy pertaining to the real property that is the subject of the aforementioned subdivision plat which opinion, certificate or policy is in a form acceptable to the County Attorney or Assistant County Attorney.

Section 5. The Clerk is instructed to file and record the consent and joinder (s) to the plat executed by all mortgages identified in the title opinion or certificate of the title in Section 4.

Section 6. The approval and acceptance described in Section 1 shall not take effect until the plat has been signed by each of the following departments, person or offices:

- a) Chairman or Vice-Chairman of the Board of County Commissioners of St. Johns County, Florida;
- b) Office of the County Attorney;
- c) County Growth Management Department;
- d) Office of the County Surveyor; and
- e) Clerk of Courts.

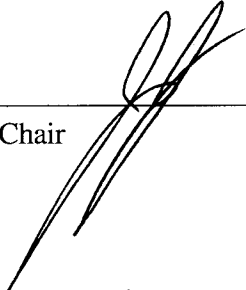
The Clerk shall not sign or accept the Plat for recording until it has been signed by each of the above persons or entities described in a) through d) above. If the plat is not signed and accepted by the Clerk for recording within 14 days from the date hereof, then the above-described conditional approval shall

automatically terminate. If the plat is signed by the Clerk on or before such time, the conditions described herein shall be deemed to have been met.

ADOPTED by the Board of County Commissioners of St. Johns County, Florida, this 17th day of January, 2017.

**BOARD OF COUNTY COMMISSIONERS
OF ST. JOHNS COUNTY, FLORIDA**

BY: _____
Chair



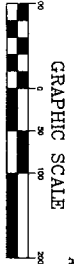
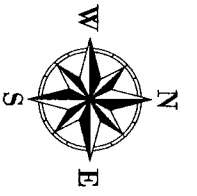
ATTEST: Hunter S. Conrad, Clerk

Pam Halterman

Deputy Clerk

RENDITION DATE 1/20/17



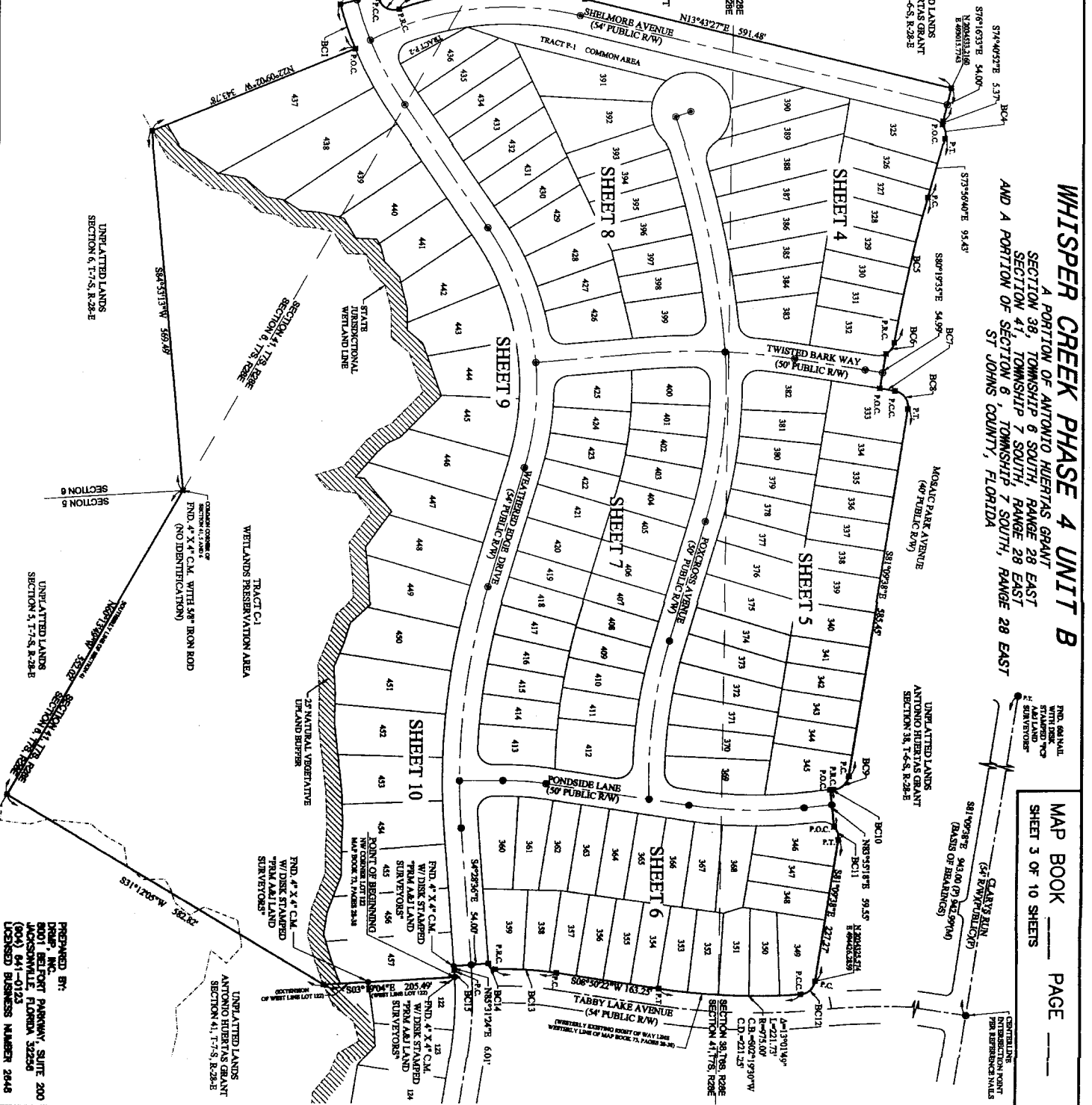


LEGEND AND ABBREVIATIONS

- SET "X" CONC. MON. - 1/2" DIA. IRON ROD FOUND MONUMENTATION (AS NOTED)
- TABULATED CURVE DATA
- FLORIDA POWER AND LIGHT
- RADIUS
- CHORD BEARING
- CHORD DISTANCE
- CALCULATED
- CONCRETE
- EASTING
- EXISTING
- FIELD
- IRON PIPE
- IRON ROD & CAP
- CONCRETE MONUMENT
- NORTHING
- OPTICAL SURVEYS BOOK
- PLAT BOOK
- POINT OF CURVATURE
- POINT OF COMPOUND CURVATURE
- POINT OF TANGENCY
- POINT OF TANGENCY
- PAGE
- RIGHT OF WAY
- SQUARE FEET
- WITH

WHISPER CREEK PHASE 4 UNIT B
 A PORTION OF ANTONIO HUERTAS GRANT SECTION 38, TOWNSHIP 6 SOUTH, RANGE 28 EAST AND A PORTION OF SECTION 6, TOWNSHIP 7 SOUTH, RANGE 28 EAST ST JOHNS COUNTY, FLORIDA

Curve #	Delta	Length	Radius	Chord Direction	Chord
BC1	07°31'12"	74.15	560.00'	S71°39'20"W	74.10
BC2	00°39'33"	5.75	500.00'	N75°07'10"E	5.75
BC3	94°44'43"	41.34	23.00'	N27°25'07"E	36.79
BC4	54°05'31"	23.60	25.00'	N79°00'30"E	22.74
BC5	06°17'57"	235.27	2,140.00'	S77°05'40"E	235.15
BC6	52°49'44"	23.05	25.00'	S53°49'40"E	22.24
BC7	00°42'28"	24.40	1,975.00'	N09°59'00"E	24.40
BC8	88°30'07"	38.62	25.00'	N54°35'20"E	34.89
BC9	78°43'38"	34.42	25.00'	S41°42'50"E	31.77
BC10	01°17'26"	5.07	225.00'	S02°54'40"E	5.07
BC11	52°37'06"	22.95	25.00'	N72°32'20"E	22.16
BC12	76°05'57"	33.58	25.00'	S42°40'30"E	31.12
BC13	10°56'52"	96.49	505.00'	S03°22'00"W	96.35
BC14	87°37'54"	15.29	10.00'	S41°42'20"W	13.85
BC15	01°09'32"	11.59	573.00'	N86°06'10"E	11.59



MAP BOOK PAGE
 SHEET 3 OF 10 SHEETS

PREPARED BY:
 [Name]
 [Address]
 JACKSONVILLE, FLORIDA 32206
 LICENSED BUSINESS NUMBER 26448