

RESOLUTION NO. 2017- 95

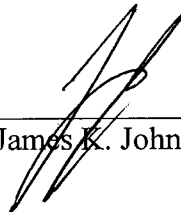
RESOLVED, that the Board of County Commissioners of St. Johns County, Florida, in the County Auditorium of the St. Johns County Administration Building, on April 18, 2017, at 9:00 a.m. or at a date and time as soon thereafter as possible upon petition of qualified landowners, will consider the advisability of exercising the power granted to it by Section 336.09, Florida Statutes 2007, and determine whether it will vacate, abandon, discontinue and close portions of certain streets, alleyways, or roads described as follows:

Legal description as per attached "Schedule A"

and the notice required by Section 336.10, Florida Statutes 2007, is hereby authorized and directed to be published.

ADOPTED by the Board of County Commissioners of St. Johns County, Florida, this 21th day of March, 2017.

BOARD OF COUNTY COMMISSIONERS
OF ST. JOHNS COUNTY, FLORIDA

BY: 
James K. Johns, Chair

RENDITION DATE 3/23/17

ATTEST: Hunter S. Conrad



Deputy Clerk



SCHEDULE A

ALL OF THAT CERTAIN ROAD RIGHT OF WAY DESIGNATED AS PARK PLACE, TRAVERSING BLOCK 70 AND DEPICTED ON THE PLAT OF VERMONT HEIGHTS AS RECORDED IN MAP BOOK 5, PAGE 29 OF THE PUBLIC RECORDS OF ST. JOHNS COUNTY, FLORIDA. BOUNDED ON THE SOUTH BY THE NORTHERLY RIGHT OF WAY LINE OF SEVENTH STREET AND BOUNDED ON THE NORTH BY THE SOUTHERNLY RIGHT OF WAY LINE OF SIXTH STREET.

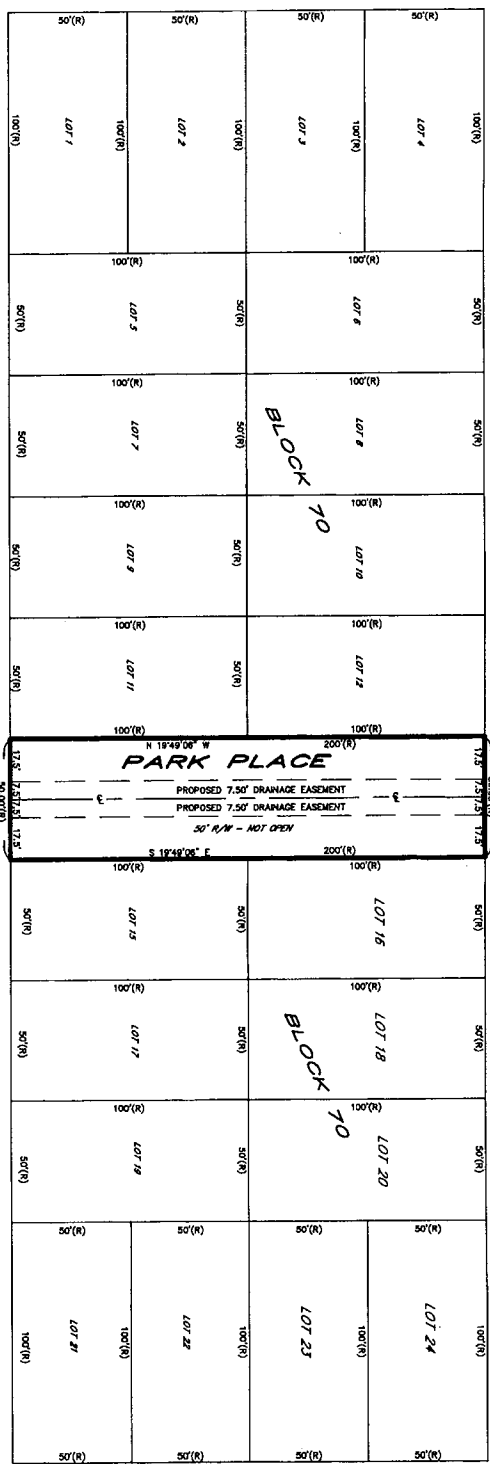
VERMONT BOULEVARD
40' R/W - PAVED



SKETCH OF LEGAL

BLOCK 71

SIXTH STREET
40' R/W - NOT OPEN



NEW HAMPSHIRE AVENUE
40' R/W - PAVED

LEGEND
 R/W - RIGHT OF WAY
 CON - CONCRETE
 AS - ASPHALT
 B - BUSINESS
 S - SURFACE
 E - EASEMENT

DESCRIPTION OF SURFACE
 ALL OF THAT CERTAIN ROAD RIGHT OF WAY DESCRIBED AS PARK PLACE, TRAVERING BLOCK 70 AND DEPICED ON THE PAGE 29 OF THE PUBLIC RECORDS OF ST. JAMES COUNTY, FLORIDA, PARCELS OF SURFACE RIGHT OF WAY BOUND ON THE NORTH BY THE SOUTHERLY RIGHT OF WAY LINE OF SUBJECT TO A 15 FOOT UTILITY EASEMENT BEING 7.5 FEET WIDE AND SHOWN AS SHOWN HEREON IS THE ENTIRE AND UNDIVIDED SURFACE OF THE



NOTES
 THE BASIS OF BEARING AS SHOWN HEREON IS THE NORTHERLY RIGHT-OF-WAY LINE OF SEVENTH STREET TAKING AN ASSUMED BEARING OF S 70°00'00\"/>

SEAL
 MICHAEL A. PIERSON PLS.
 Professional Land Surveyor #4793
 DATE SIGNED: 2/1/17

ANCIENT CITY SURVEYING
 LB#7111
ACS
 SURVEYORS * ENGINEERS
 LAND PLANNERS
 4425 U.S. HIGHWAY No. 1 SOUTH, SUITE 401
 ST. AUGUSTINE, FLORIDA 32086
 PHONE: 904-797-9967 FAX: 904-797-6027

JONATHAN & STEPHANIE GREEN

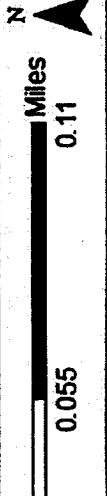
REVISIONS

11/15/2016 8:57AM \\Front\projects\Autocad\2016\16-342\view\16-542.dwg

AERIAL MAP

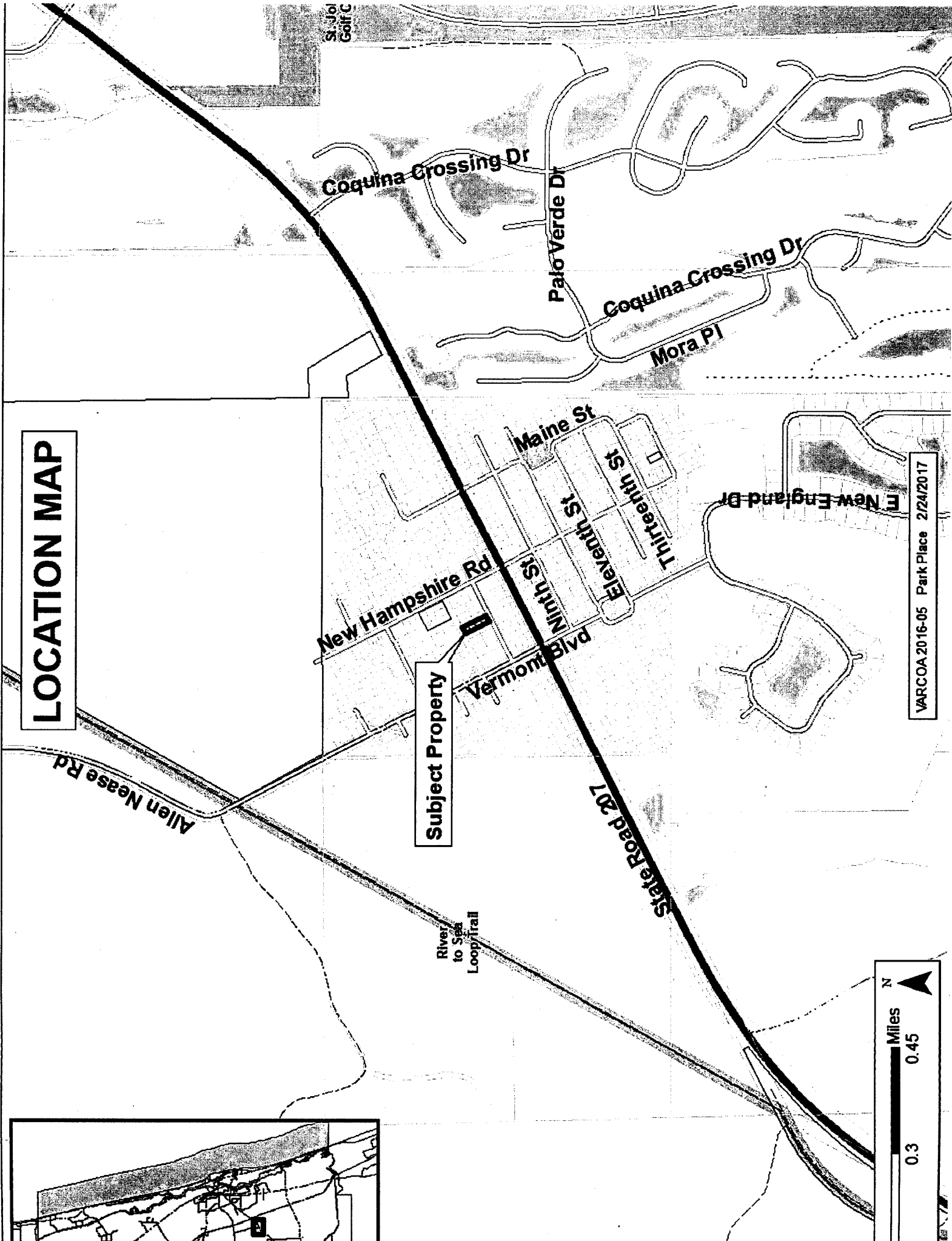


A2016-05



VARCOA 2016-05 Park Place 2/24/2017

LOCATION MAP



Subject Property

VARCOA 2016-05 Park Place 2/24/2017

