

RESOLUTION NO. 2018- 407
RESOLUTION OF THE BOARD OF COUNTY COMMISSIONERS
OF ST. JOHNS COUNTY, FLORIDA APPROVING A PLAT FOR
NORTHRIDGE LAKES UNIT 6

WHEREAS, D.R. HORTON INC. - JACKSONVILLE, A DELAWARE CORPORATION, AS OWNER has applied to the Board of County Commissioners of St. Johns County, Florida for approval to record a plat known as Northridge Lakes Unit 6.

NOW, THEREFORE BE IT RESOLVED BY THE BOARD OF COUNTY COMMISSIONERS OF ST. JOHNS COUNTY, FLORIDA, as follows:

Section 1. The above-described subdivision plat and its dedicated areas depicted thereon are conditionally approved and accepted by the Board of County Commissioners of St. Johns County, Florida subject to Sections 2, 3, 4, 5 and 6.

Section 2. A Required Improvements Bond in the amount of **\$1,093,940.21** has been filed with the Clerk's office.

Section 3. A Required Improvements Bond in the amount of **\$168,757.91** will be required for maintenance.

Section 4. The approval and acceptance described in Section 1 shall not take effect until the Clerk has received a title opinion, certificate, or policy pertaining to the real property that is the subject of the aforementioned subdivision plat which opinion, certificate or policy is in a form acceptable to the County Attorney or Assistant County Attorney.

Section 5. The Clerk is instructed to file and record the consent and joinder(s) to the plat executed by all mortgages identified in the title opinion or certificate of the title in Section 4.

Section 6. The approval and acceptance described in Section 1 shall not take effect until the plat has been signed by each of the following departments, person or offices:

- a) Chairman or Vice-Chairman of the Board of County Commissioners of St. Johns County, Florida;
- b) Office of the County Attorney;
- c) County Growth Management Department;
- d) Office of the County Surveyor; and
- e) Clerk of Courts.

The Clerk shall not sign or accept the Plat for recording until it has been signed by each of the above persons or entities described in a) through d) above. If the plat is not signed and accepted by the Clerk for recording within 14 days from the date hereof, then the above-described conditional approval shall

automatically terminate. If the plat is signed by the Clerk on or before such time, the conditions described herein shall be deemed to have been met.

ADOPTED by the Board of County Commissioners of St. Johns County, Florida, this 4 day of December, 2018.

**BOARD OF COUNTY COMMISSIONERS
OF ST. JOHNS COUNTY, FLORIDA**

BY: Paul M. Waldron

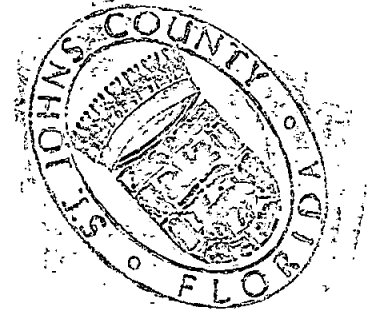
Paul M. Waldron, Chair

ATTEST: Hunter S. Conrad

Sam Halterman

Deputy Clerk

RENDITION DATE 12/6/18

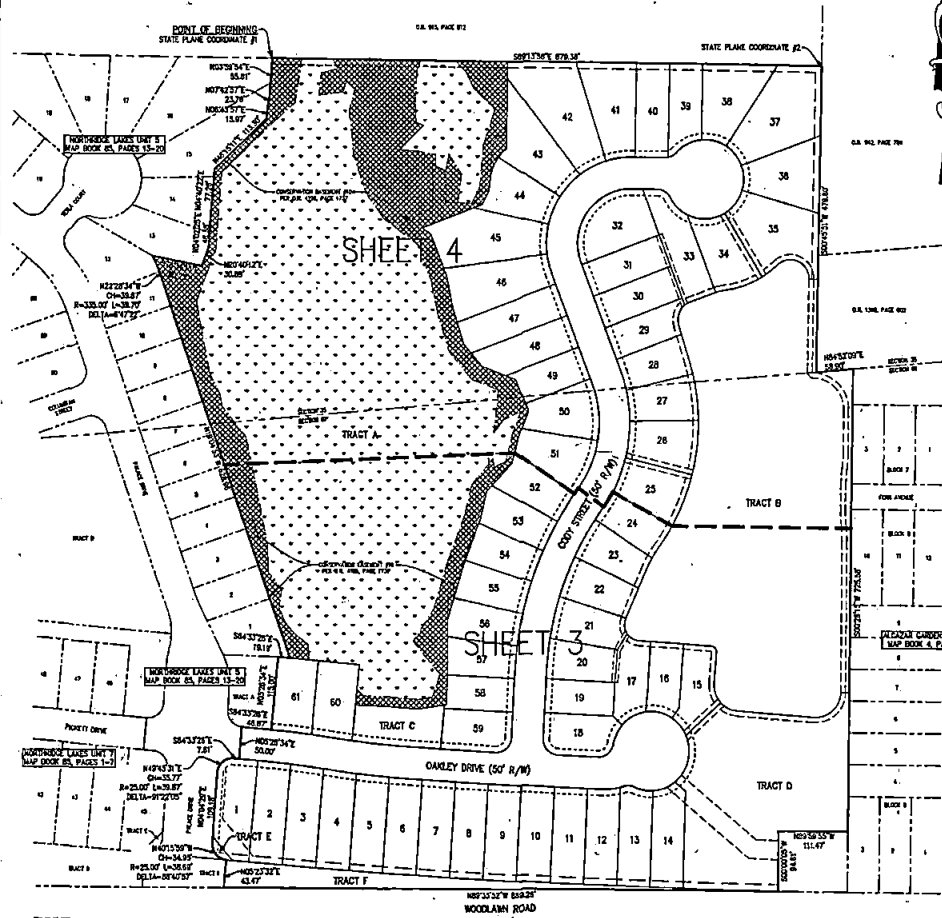


NORTHRIDGE LAKES UNIT 6

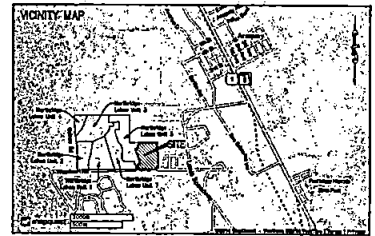
A PORTION OF SECTIONS 35 AND 81, TOWNSHIP 6 SOUTH, RANGE 29 EAST, ST. JOHNS COUNTY, FLORIDA

MAP BOOK _____ PAGE _____

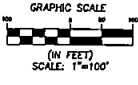
SHEET 2 OF 4



STATE PLANE COORDINATES TABLE			
POINT	NORTHING	EASTING	DESCRIPTION
1	84888.610	84478.686	POINT OF BEGINNING
2	84888.610	84478.686	NE CORNER OF LOT 22, 1998



LEGEND	
1	PERMANENT EASEMENT
2	5' PLANT CONCERN EASEMENT (6' TYP. MIN)
3	5' PLANT CONCERN EASEMENT (6' TYP. MIN)
4	5' PLANT CONCERN EASEMENT (6' TYP. MIN)
5	5' PLANT CONCERN EASEMENT (6' TYP. MIN)
6	5' PLANT CONCERN EASEMENT (6' TYP. MIN)
7	5' PLANT CONCERN EASEMENT (6' TYP. MIN)
8	5' PLANT CONCERN EASEMENT (6' TYP. MIN)
9	5' PLANT CONCERN EASEMENT (6' TYP. MIN)
10	5' PLANT CONCERN EASEMENT (6' TYP. MIN)
11	5' PLANT CONCERN EASEMENT (6' TYP. MIN)
12	5' PLANT CONCERN EASEMENT (6' TYP. MIN)
13	5' PLANT CONCERN EASEMENT (6' TYP. MIN)
14	5' PLANT CONCERN EASEMENT (6' TYP. MIN)
15	5' PLANT CONCERN EASEMENT (6' TYP. MIN)
16	5' PLANT CONCERN EASEMENT (6' TYP. MIN)
17	5' PLANT CONCERN EASEMENT (6' TYP. MIN)
18	5' PLANT CONCERN EASEMENT (6' TYP. MIN)
19	5' PLANT CONCERN EASEMENT (6' TYP. MIN)
20	5' PLANT CONCERN EASEMENT (6' TYP. MIN)
21	5' PLANT CONCERN EASEMENT (6' TYP. MIN)
22	5' PLANT CONCERN EASEMENT (6' TYP. MIN)
23	5' PLANT CONCERN EASEMENT (6' TYP. MIN)
24	5' PLANT CONCERN EASEMENT (6' TYP. MIN)
25	5' PLANT CONCERN EASEMENT (6' TYP. MIN)
26	5' PLANT CONCERN EASEMENT (6' TYP. MIN)
27	5' PLANT CONCERN EASEMENT (6' TYP. MIN)
28	5' PLANT CONCERN EASEMENT (6' TYP. MIN)
29	5' PLANT CONCERN EASEMENT (6' TYP. MIN)
30	5' PLANT CONCERN EASEMENT (6' TYP. MIN)
31	5' PLANT CONCERN EASEMENT (6' TYP. MIN)
32	5' PLANT CONCERN EASEMENT (6' TYP. MIN)
33	5' PLANT CONCERN EASEMENT (6' TYP. MIN)
34	5' PLANT CONCERN EASEMENT (6' TYP. MIN)
35	5' PLANT CONCERN EASEMENT (6' TYP. MIN)
36	5' PLANT CONCERN EASEMENT (6' TYP. MIN)
37	5' PLANT CONCERN EASEMENT (6' TYP. MIN)
38	5' PLANT CONCERN EASEMENT (6' TYP. MIN)
39	5' PLANT CONCERN EASEMENT (6' TYP. MIN)
40	5' PLANT CONCERN EASEMENT (6' TYP. MIN)
41	5' PLANT CONCERN EASEMENT (6' TYP. MIN)
42	5' PLANT CONCERN EASEMENT (6' TYP. MIN)
43	5' PLANT CONCERN EASEMENT (6' TYP. MIN)
44	5' PLANT CONCERN EASEMENT (6' TYP. MIN)
45	5' PLANT CONCERN EASEMENT (6' TYP. MIN)
46	5' PLANT CONCERN EASEMENT (6' TYP. MIN)
47	5' PLANT CONCERN EASEMENT (6' TYP. MIN)
48	5' PLANT CONCERN EASEMENT (6' TYP. MIN)
49	5' PLANT CONCERN EASEMENT (6' TYP. MIN)
50	5' PLANT CONCERN EASEMENT (6' TYP. MIN)
51	5' PLANT CONCERN EASEMENT (6' TYP. MIN)
52	5' PLANT CONCERN EASEMENT (6' TYP. MIN)
53	5' PLANT CONCERN EASEMENT (6' TYP. MIN)
54	5' PLANT CONCERN EASEMENT (6' TYP. MIN)
55	5' PLANT CONCERN EASEMENT (6' TYP. MIN)
56	5' PLANT CONCERN EASEMENT (6' TYP. MIN)
57	5' PLANT CONCERN EASEMENT (6' TYP. MIN)
58	5' PLANT CONCERN EASEMENT (6' TYP. MIN)
59	5' PLANT CONCERN EASEMENT (6' TYP. MIN)
60	5' PLANT CONCERN EASEMENT (6' TYP. MIN)
61	5' PLANT CONCERN EASEMENT (6' TYP. MIN)



- NOTES:
1. BEARING REFERENCE: BEARINGS FOR THE ENTIRELY NEW LINE OF MOBILE HOME DRIVE FOR NORTHRIDGE LAKES UNIT 6, MAP BOOK 88, PAGE 88-41.
 2. STATE PLANE COORDINATES SHOWN IN THIS PLAT ARE BASED ON THE FLORIDA STATE PLANE COORDINATE SYSTEM, FLORIDA EASY ZONE.
 3. THIS PLAT, AS A CONDITION OF THE OFFICIAL RECORDING OF THE SURVEY, IS THE PROPERTY OF THE SURVEYOR. IT IS THE PROPERTY OF THE SURVEYOR AND WILL BE RETURNED TO HIM OR HER UPON THE COMPLETION OF THE SURVEY. THE PLAT BOOK WILL BE RETURNED TO HIM OR HER UPON THE COMPLETION OF THE SURVEY.
 4. THE SURVEYOR HAS CONDUCTED THE SURVEY IN ACCORDANCE WITH THE FLORIDA STATUTES AND THE FLORIDA BOARD OF SURVEYING AND MAPPING.
 5. THE SURVEYOR HAS CONDUCTED THE SURVEY IN ACCORDANCE WITH THE FLORIDA STATUTES AND THE FLORIDA BOARD OF SURVEYING AND MAPPING.
 6. THE SURVEYOR HAS CONDUCTED THE SURVEY IN ACCORDANCE WITH THE FLORIDA STATUTES AND THE FLORIDA BOARD OF SURVEYING AND MAPPING.
 7. THE SURVEYOR HAS CONDUCTED THE SURVEY IN ACCORDANCE WITH THE FLORIDA STATUTES AND THE FLORIDA BOARD OF SURVEYING AND MAPPING.
 8. THE SURVEYOR HAS CONDUCTED THE SURVEY IN ACCORDANCE WITH THE FLORIDA STATUTES AND THE FLORIDA BOARD OF SURVEYING AND MAPPING.
 9. THE SURVEYOR HAS CONDUCTED THE SURVEY IN ACCORDANCE WITH THE FLORIDA STATUTES AND THE FLORIDA BOARD OF SURVEYING AND MAPPING.
 10. THE SURVEYOR HAS CONDUCTED THE SURVEY IN ACCORDANCE WITH THE FLORIDA STATUTES AND THE FLORIDA BOARD OF SURVEYING AND MAPPING.
 11. THE SURVEYOR HAS CONDUCTED THE SURVEY IN ACCORDANCE WITH THE FLORIDA STATUTES AND THE FLORIDA BOARD OF SURVEYING AND MAPPING.
 12. THE SURVEYOR HAS CONDUCTED THE SURVEY IN ACCORDANCE WITH THE FLORIDA STATUTES AND THE FLORIDA BOARD OF SURVEYING AND MAPPING.
 13. THE SURVEYOR HAS CONDUCTED THE SURVEY IN ACCORDANCE WITH THE FLORIDA STATUTES AND THE FLORIDA BOARD OF SURVEYING AND MAPPING.
 14. THE SURVEYOR HAS CONDUCTED THE SURVEY IN ACCORDANCE WITH THE FLORIDA STATUTES AND THE FLORIDA BOARD OF SURVEYING AND MAPPING.
 15. THE SURVEYOR HAS CONDUCTED THE SURVEY IN ACCORDANCE WITH THE FLORIDA STATUTES AND THE FLORIDA BOARD OF SURVEYING AND MAPPING.
 16. THE SURVEYOR HAS CONDUCTED THE SURVEY IN ACCORDANCE WITH THE FLORIDA STATUTES AND THE FLORIDA BOARD OF SURVEYING AND MAPPING.
 17. THE SURVEYOR HAS CONDUCTED THE SURVEY IN ACCORDANCE WITH THE FLORIDA STATUTES AND THE FLORIDA BOARD OF SURVEYING AND MAPPING.
 18. THE SURVEYOR HAS CONDUCTED THE SURVEY IN ACCORDANCE WITH THE FLORIDA STATUTES AND THE FLORIDA BOARD OF SURVEYING AND MAPPING.
 19. THE SURVEYOR HAS CONDUCTED THE SURVEY IN ACCORDANCE WITH THE FLORIDA STATUTES AND THE FLORIDA BOARD OF SURVEYING AND MAPPING.
 20. THE SURVEYOR HAS CONDUCTED THE SURVEY IN ACCORDANCE WITH THE FLORIDA STATUTES AND THE FLORIDA BOARD OF SURVEYING AND MAPPING.
 21. THE SURVEYOR HAS CONDUCTED THE SURVEY IN ACCORDANCE WITH THE FLORIDA STATUTES AND THE FLORIDA BOARD OF SURVEYING AND MAPPING.
 22. THE SURVEYOR HAS CONDUCTED THE SURVEY IN ACCORDANCE WITH THE FLORIDA STATUTES AND THE FLORIDA BOARD OF SURVEYING AND MAPPING.
 23. THE SURVEYOR HAS CONDUCTED THE SURVEY IN ACCORDANCE WITH THE FLORIDA STATUTES AND THE FLORIDA BOARD OF SURVEYING AND MAPPING.
 24. THE SURVEYOR HAS CONDUCTED THE SURVEY IN ACCORDANCE WITH THE FLORIDA STATUTES AND THE FLORIDA BOARD OF SURVEYING AND MAPPING.
 25. THE SURVEYOR HAS CONDUCTED THE SURVEY IN ACCORDANCE WITH THE FLORIDA STATUTES AND THE FLORIDA BOARD OF SURVEYING AND MAPPING.
 26. THE SURVEYOR HAS CONDUCTED THE SURVEY IN ACCORDANCE WITH THE FLORIDA STATUTES AND THE FLORIDA BOARD OF SURVEYING AND MAPPING.
 27. THE SURVEYOR HAS CONDUCTED THE SURVEY IN ACCORDANCE WITH THE FLORIDA STATUTES AND THE FLORIDA BOARD OF SURVEYING AND MAPPING.
 28. THE SURVEYOR HAS CONDUCTED THE SURVEY IN ACCORDANCE WITH THE FLORIDA STATUTES AND THE FLORIDA BOARD OF SURVEYING AND MAPPING.
 29. THE SURVEYOR HAS CONDUCTED THE SURVEY IN ACCORDANCE WITH THE FLORIDA STATUTES AND THE FLORIDA BOARD OF SURVEYING AND MAPPING.
 30. THE SURVEYOR HAS CONDUCTED THE SURVEY IN ACCORDANCE WITH THE FLORIDA STATUTES AND THE FLORIDA BOARD OF SURVEYING AND MAPPING.
 31. THE SURVEYOR HAS CONDUCTED THE SURVEY IN ACCORDANCE WITH THE FLORIDA STATUTES AND THE FLORIDA BOARD OF SURVEYING AND MAPPING.
 32. THE SURVEYOR HAS CONDUCTED THE SURVEY IN ACCORDANCE WITH THE FLORIDA STATUTES AND THE FLORIDA BOARD OF SURVEYING AND MAPPING.
 33. THE SURVEYOR HAS CONDUCTED THE SURVEY IN ACCORDANCE WITH THE FLORIDA STATUTES AND THE FLORIDA BOARD OF SURVEYING AND MAPPING.
 34. THE SURVEYOR HAS CONDUCTED THE SURVEY IN ACCORDANCE WITH THE FLORIDA STATUTES AND THE FLORIDA BOARD OF SURVEYING AND MAPPING.
 35. THE SURVEYOR HAS CONDUCTED THE SURVEY IN ACCORDANCE WITH THE FLORIDA STATUTES AND THE FLORIDA BOARD OF SURVEYING AND MAPPING.
 36. THE SURVEYOR HAS CONDUCTED THE SURVEY IN ACCORDANCE WITH THE FLORIDA STATUTES AND THE FLORIDA BOARD OF SURVEYING AND MAPPING.
 37. THE SURVEYOR HAS CONDUCTED THE SURVEY IN ACCORDANCE WITH THE FLORIDA STATUTES AND THE FLORIDA BOARD OF SURVEYING AND MAPPING.
 38. THE SURVEYOR HAS CONDUCTED THE SURVEY IN ACCORDANCE WITH THE FLORIDA STATUTES AND THE FLORIDA BOARD OF SURVEYING AND MAPPING.
 39. THE SURVEYOR HAS CONDUCTED THE SURVEY IN ACCORDANCE WITH THE FLORIDA STATUTES AND THE FLORIDA BOARD OF SURVEYING AND MAPPING.
 40. THE SURVEYOR HAS CONDUCTED THE SURVEY IN ACCORDANCE WITH THE FLORIDA STATUTES AND THE FLORIDA BOARD OF SURVEYING AND MAPPING.
 41. THE SURVEYOR HAS CONDUCTED THE SURVEY IN ACCORDANCE WITH THE FLORIDA STATUTES AND THE FLORIDA BOARD OF SURVEYING AND MAPPING.
 42. THE SURVEYOR HAS CONDUCTED THE SURVEY IN ACCORDANCE WITH THE FLORIDA STATUTES AND THE FLORIDA BOARD OF SURVEYING AND MAPPING.
 43. THE SURVEYOR HAS CONDUCTED THE SURVEY IN ACCORDANCE WITH THE FLORIDA STATUTES AND THE FLORIDA BOARD OF SURVEYING AND MAPPING.
 44. THE SURVEYOR HAS CONDUCTED THE SURVEY IN ACCORDANCE WITH THE FLORIDA STATUTES AND THE FLORIDA BOARD OF SURVEYING AND MAPPING.
 45. THE SURVEYOR HAS CONDUCTED THE SURVEY IN ACCORDANCE WITH THE FLORIDA STATUTES AND THE FLORIDA BOARD OF SURVEYING AND MAPPING.
 46. THE SURVEYOR HAS CONDUCTED THE SURVEY IN ACCORDANCE WITH THE FLORIDA STATUTES AND THE FLORIDA BOARD OF SURVEYING AND MAPPING.
 47. THE SURVEYOR HAS CONDUCTED THE SURVEY IN ACCORDANCE WITH THE FLORIDA STATUTES AND THE FLORIDA BOARD OF SURVEYING AND MAPPING.
 48. THE SURVEYOR HAS CONDUCTED THE SURVEY IN ACCORDANCE WITH THE FLORIDA STATUTES AND THE FLORIDA BOARD OF SURVEYING AND MAPPING.
 49. THE SURVEYOR HAS CONDUCTED THE SURVEY IN ACCORDANCE WITH THE FLORIDA STATUTES AND THE FLORIDA BOARD OF SURVEYING AND MAPPING.
 50. THE SURVEYOR HAS CONDUCTED THE SURVEY IN ACCORDANCE WITH THE FLORIDA STATUTES AND THE FLORIDA BOARD OF SURVEYING AND MAPPING.
 51. THE SURVEYOR HAS CONDUCTED THE SURVEY IN ACCORDANCE WITH THE FLORIDA STATUTES AND THE FLORIDA BOARD OF SURVEYING AND MAPPING.
 52. THE SURVEYOR HAS CONDUCTED THE SURVEY IN ACCORDANCE WITH THE FLORIDA STATUTES AND THE FLORIDA BOARD OF SURVEYING AND MAPPING.
 53. THE SURVEYOR HAS CONDUCTED THE SURVEY IN ACCORDANCE WITH THE FLORIDA STATUTES AND THE FLORIDA BOARD OF SURVEYING AND MAPPING.
 54. THE SURVEYOR HAS CONDUCTED THE SURVEY IN ACCORDANCE WITH THE FLORIDA STATUTES AND THE FLORIDA BOARD OF SURVEYING AND MAPPING.
 55. THE SURVEYOR HAS CONDUCTED THE SURVEY IN ACCORDANCE WITH THE FLORIDA STATUTES AND THE FLORIDA BOARD OF SURVEYING AND MAPPING.
 56. THE SURVEYOR HAS CONDUCTED THE SURVEY IN ACCORDANCE WITH THE FLORIDA STATUTES AND THE FLORIDA BOARD OF SURVEYING AND MAPPING.
 57. THE SURVEYOR HAS CONDUCTED THE SURVEY IN ACCORDANCE WITH THE FLORIDA STATUTES AND THE FLORIDA BOARD OF SURVEYING AND MAPPING.
 58. THE SURVEYOR HAS CONDUCTED THE SURVEY IN ACCORDANCE WITH THE FLORIDA STATUTES AND THE FLORIDA BOARD OF SURVEYING AND MAPPING.
 59. THE SURVEYOR HAS CONDUCTED THE SURVEY IN ACCORDANCE WITH THE FLORIDA STATUTES AND THE FLORIDA BOARD OF SURVEYING AND MAPPING.
 60. THE SURVEYOR HAS CONDUCTED THE SURVEY IN ACCORDANCE WITH THE FLORIDA STATUTES AND THE FLORIDA BOARD OF SURVEYING AND MAPPING.
 61. THE SURVEYOR HAS CONDUCTED THE SURVEY IN ACCORDANCE WITH THE FLORIDA STATUTES AND THE FLORIDA BOARD OF SURVEYING AND MAPPING.

Richard P. Clarson
AND ASSOCIATES, INC.
Professional Surveyors and Planners
1414 South Orange Avenue, Suite 1000
Orlando, Florida 32809
Phone: 407.241.1232
Fax: 407.241.1233
E-mail: rclarson@rpa.com