

RESOLUTION NO. 2020-439
RESOLUTION OF THE BOARD OF COUNTY COMMISSIONERS
OF ST. JOHNS COUNTY, FLORIDA APPROVING A PLAT FOR
HARTFORD (SILVERLEAF – PARCEL 17C).

WHEREAS, LAND PLANNERS DEVELOPMENT II, INC., A FLORIDA CORPORATION, AS OWNER, has applied to the Board of County Commissioners of St. Johns County, Florida for approval to record a plat known as Hartford (Silverleaf – Parcel 17C).

NOW, THEREFORE BE IT RESOLVED BY THE BOARD OF COUNTY COMMISSIONERS OF ST. JOHNS COUNTY, FLORIDA, as follows:

Section 1. The above-described subdivision plat and its dedicated areas depicted thereon are conditionally approved and accepted by the Board of County Commissioners of St. Johns County, Florida subject to Sections 2, 3, 4, 5 and 6.

Section 2. A Required Improvements Bond in the amount of \$1,898,197.90 has been filed with the Clerk's office.

Section 3. A Required Improvements Bond in the amount of \$733,583.00 is required for maintenance.

Section 4. The approval and acceptance described in Section 1 shall not take effect until the Clerk has received a title opinion, certificate, or policy pertaining to the real property that is the subject of the aforementioned subdivision plat which opinion, certificate or policy is in a form acceptable to the County Attorney or Assistant County Attorney.

Section 5. The Clerk is instructed to file and record the consent and joinder(s) to the plat executed by all mortgagees identified in the title opinion or certificate of the title in Section 4.

Section 6. The approval and acceptance described in Section 1 shall not take effect until the plat has been signed by each of the following departments, person or offices:

- a) Chairman or Vice-Chairman of the Board of County Commissioners of St. Johns County, Florida;
- b) Office of the County Attorney;
- c) County Growth Management Department;
- d) Office of the County Surveyor; and
- e) Clerk of Courts.

The Clerk shall not sign or accept the Plat for recording until it has been signed by each of the above persons or entities described in a) through d) above. If the plat is not signed and accepted by the Clerk for recording within 14 days from the date hereof, then the above-described conditional approval shall

automatically terminate. If the plat is signed by the Clerk on or before such time, the conditions described herein shall be deemed to have been met.


ADOPTED by the Board of County Commissioners of St. Johns County, Florida, this 17th day of November, 2020.

**BOARD OF COUNTY COMMISSIONERS
OF ST. JOHNS COUNTY, FLORIDA**

BY: 

Henry Dean, Vice Chairman

ATTEST: Brandon J. Patty, Clerk of the Circuit Court & Comptroller


Deputy Clerk

RENDITION DATE 11/19/20



HARTFORD

(SILVERLEAF - PARCEL 17C)

BEING A PORTION OF SECTION 5, TOWNSHIP 6 SOUTH, RANGE 28 EAST, TOGETHER WITH A PORTION OF SECTION 32, TOWNSHIP 5 SOUTH, RANGE 28 EAST, ST. JOHNS COUNTY, FLORIDA.

MAP BOOK PAGE

SHEET 1 OF 18 SHEETS

SEE SHEET 2 FOR NOTES

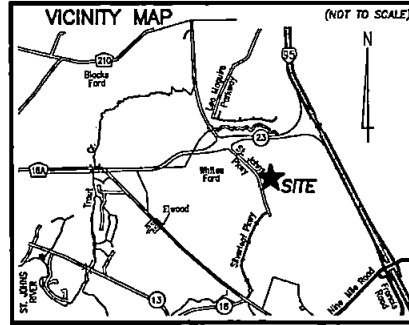
CAPTION

A portion of Section 5, Township 6 South, Range 28 East, together with a portion of Section 32, Township 5 South, Range 28 East, St. Johns County, Florida, being more particularly described as follows:

For a Point of Reference, commence at the Southwesterly corner of said Section 32; thence North 88°41'52" East, along the Southerly line of said Section 32, a distance of 2079.63 feet; thence South 01°18'08" East, along the said Southerly line, 198.20 feet to a point lying on the Northeasterly right of way line of St. Johns Parkway (County Road No. 2209), a variable width right of way line as presently established and the Point of Beginning.

From said Point of Beginning, thence North 42°05'05" East, 542.50 feet; thence North 47°54'55" West, 619.11 feet; thence North 42°05'05" East, 60.00 feet; thence South 47°54'55" East, 619.11 feet to a point lying on the Southwesterly prolongation of the Southerly line of Silverleaf Village, a plot recorded in Map Book 96, pages 22 through 51, of the Public Records of said county; thence North 42°05'05" East, along said Southwesterly prolongation and along said Southerly line, 233.47 feet; thence continue along said Southerly line the following 3 courses: Course 1, thence North 29°53'57" East, 128.31 feet; Course 2, thence North 02°41'00" East, 167.07 feet; Course 3, thence South 81°41'13" East, 1721.87 feet to the Southeasterly most corner of said Silverleaf Village; thence Due South, 614.45 feet; thence South 81°28'01" West, 947.64 feet; thence South 59°39'10" West, 868.68 feet to a point lying on said Northeasterly right of way line of St. Johns Parkway, said Northeasterly right of way line being a curve concave Southwesterly having a radius of 2925.00 feet; thence Northwesterly along said Northeasterly right of way line the following 8 courses: Course 1, thence Northwesterly along the arc of said curve, through a central angle of 08°19'14", an arc length of 424.78 feet to a point on said curve, said arc being subtended by a chord bearing and distance of North 34°53'07" West, 424.40 feet; Course 2, thence North 05°11'53" East, 35.67 feet; Course 3, thence North 49°40'52" East, 91.25 feet; Course 4, thence North 40°19'08" West, 80.00 feet; Course 5, thence South 49°40'52" West, 91.25 feet; Course 6, thence North 85°30'09" West, 33.67 feet to a point on a curve concave Southwesterly having a radius of 2925.00 feet; Course 7, thence Northwesterly along the arc of said curve, through a central angle of 08°19'24", an arc length of 322.81 feet to the point of tangency of said curve, said arc being subtended by a chord bearing and distance of North 44°45'14" West, 322.64 feet; Course 8, thence North 47°54'55" West, 288.88 feet to the Point of Beginning.

Containing 57.21 acres, more or less.



ADOPTION AND DEDICATION

This is to certify that Land Planners Development II, Inc., a Florida corporation ("Owner"), is the lawful owner of the lands described in the caption shown hereon which shall hereafter be known as HARTFORD, and that it has caused the same to be surveyed and subdivided, and that this plat, made in accordance with said survey, is hereby adopted as the true and correct plat of said lands.

The road right of ways shown in this plat are hereby irrevocably dedicated to the county of St. Johns, its successors and assigns, in perpetuity for maintenance of the rights of way, access, and drainage improvements which are now or hereafter constructed thereon.

The drainage easements as shown on this plat, shall permit the county of St. Johns, its successors and assigns, to discharge all storm water which may fall or come upon all rights of way hereby dedicated, into, over, across, or through said easements shown hereon, which may be dedicated to a property owners' association, or other such entity or person as will assume all obligation of maintenance and operation thereof under the plat.

Tracts "B", "C" and "L" (Open Space/Park), Tracts "D", "G" and "H" (Open Space) and Tracts "E" and "F" (Open Space & Landscape), Tracts "I" and "J" (Open Space/Landscape & Signage) and Tract "K" (Conservation Area) are hereby retained by the undersigned Owner, its successors and assigns; provided however, the undersigned owner reserves the right to convey title to said tracts to an entity or person, including without limitation, a property owners' association, a municipal services taxing unit, community development district, or other such entity or person.

All easements shown on this plat, other than those specifically dedicated herein, are and shall remain privately owned and the sole and exclusive property of the undersigned Owner, its successors and assigns. The undersigned Owner retains the obligation for maintenance of these privately owned easements; provided however, the undersigned Owner reserves the right to assign the obligation for maintenance of said easements to a property owners' association or other such entity or person as will assume all obligation of maintenance and operation thereof under the plat.

Those easements designated as "FPL Easements" are hereby irrevocably dedicated to Florida Power & Light Company, its successors and assigns, for its non-exclusive use in conjunction with its underground electrical system. Additional utility easements may be granted to Florida Power & Light Company over additional portions of the plat as needed, the rights reserved hereby for the construction, installation, maintenance and operation of electrical service.

Those easements designated as "FPL/Utility Easements" are hereby irrevocably dedicated to Florida Power & Light Company, its successors and assigns, for its non-exclusive use in conjunction with accessing its underground electrical system.

Tract "A" (Pump Station Tract) is hereby irrevocably and without reservation dedicated in fee simple title to St. Johns County, its successors and assigns.

All utility easements shown on this plat are hereby irrevocably and without reservations dedicated to St. Johns County, a political subdivision, its successors and assigns, for its exclusive use in conjunction with its utilities.

Pursuant to the provisions of Section 177.091(28), Florida Statutes, all platted utility easements shall provide that such easements shall also be easements for the construction, installation, maintenance, and operation of cable television services; provided, however, no such construction, installation, maintenance, and operation of cable television services shall interfere with the facilities and services of an electric, telephone, gas, or other public utility. In the event a cable television company damages the facilities of a public utility, it shall be solely responsible for the damages. This section shall not apply to those private easements granted to or obtained by a particular electric, telephone, gas, or other public utility. Such construction, installation, maintenance, and operation shall comply with the National Electric Safety Code as adopted by the Florida Public Service Commission.

Those easements designated as "AT&T Easement" are hereby irrevocably dedicated to BellSouth Telecommunications, LLC, a Georgia limited liability company, d/b/a AT&T Florida, its successors and assigns, for their exclusive use. Those easements designated as "AT&T Access Easement" are hereby irrevocably dedicated to BellSouth Telecommunications, LLC, a Georgia limited liability company, d/b/a AT&T Florida, its successors and assigns, for their non-exclusive use.

In witness whereof, the undersigned Owner has caused this plat and dedication to be executed by its duly elected officers, acting by and with the authority of its board of directors.

OWNER: LAND PLANNERS DEVELOPMENT II, INC.
a Florida corporation

Witness _____ BY: _____

Printed Name _____ Cody W. Hutson
Vice President

Witness _____

Printed Name _____

STATE OF _____ COUNTY OF _____

The foregoing instrument was acknowledged before me, by means of [] physical presence or [] online notarization, this _____ day of _____, 2020, by Cody W. Hutson, Vice President of Land Planners Development II, Inc., a Florida corporation, on behalf of the corporation, who [] is personally known to me or who [] has produced _____ as identification.

Notary Public, State of Florida at Large _____ My Commission expires _____

Printed Name _____ Commission Number _____

CERTIFICATE OF APPROVAL AND ACCEPTANCE BOARD OF COUNTY COMMISSIONERS

This is to certify that this plat of Hartford has been approved and accepted by the Board of County Commissioners of St. Johns County, Florida on this _____ day of _____, 2020, this acceptance shall not be deemed as requiring construction or maintenance by St. Johns County of any part of said subdivision.

Chair, Board of County Commissioners _____

CERTIFICATE OF APPROVAL- GROWTH MANAGEMENT DEPARTMENT

This is to certify that this plat of Hartford has been examined and approved by the County Growth Management Department for St. Johns County, Florida, on this _____ day of _____, 2020.

Director of the Growth Management Department _____

CERTIFICATE OF REVIEW-COUNTY ATTORNEY

This is to certify that this plat of Hartford has been examined and reviewed by the Office of the St. Johns County Attorney on this _____ day of _____, 2020.

Office of the County Attorney _____

CERTIFICATE OF CLERK

This is to certify that this plat has been examined and approved and that it complies in form with the requirements of Part 1, Chapter 177, Florida Statutes, and is recorded in Map Book _____ Page(s) _____ of the public records of St. Johns County, Florida on this _____ day of _____, 2020.

Brandon J. Patten
Clerk of the Circuit Court & Comptroller

CERTIFICATE OF PLAT REVIEW

This is to certify that this plat has been reviewed for conformity to Part 1, Chapter 177, Florida Statutes, by the Office of the County Surveyor for St. Johns County, Florida, on this _____ day of _____, 2020.

Colt Oliver, P.S.M., County Surveyor
Professional Surveyor and Mapper
State of Florida Registered Surveyor No. 4564

SURVEYOR'S CERTIFICATE

Know all men by these presents, that the undersigned, being currently licensed and registered by the State of Florida as a Professional Surveyor and Mapper, does hereby certify that the above plat was made under the undersigned's responsible direction and supervision, and that the plat complies with all of the survey requirements of Part 1, Chapter 177, Florida Statutes.

Signed and sealed this _____ day of _____, 2020.

Damon J. Kelly
Professional Surveyor and Mapper
State of Florida Registered Surveyor No. 6284

PREPARED BY:
ETM SURVEYING & MAPPING, INC
14775 OLD ST. AUGUSTINE ROAD
JACKSONVILLE, FL 32258 (904) 642-8550
CERTIFICATE OF AUTHORIZATION NO. L.B. 3624

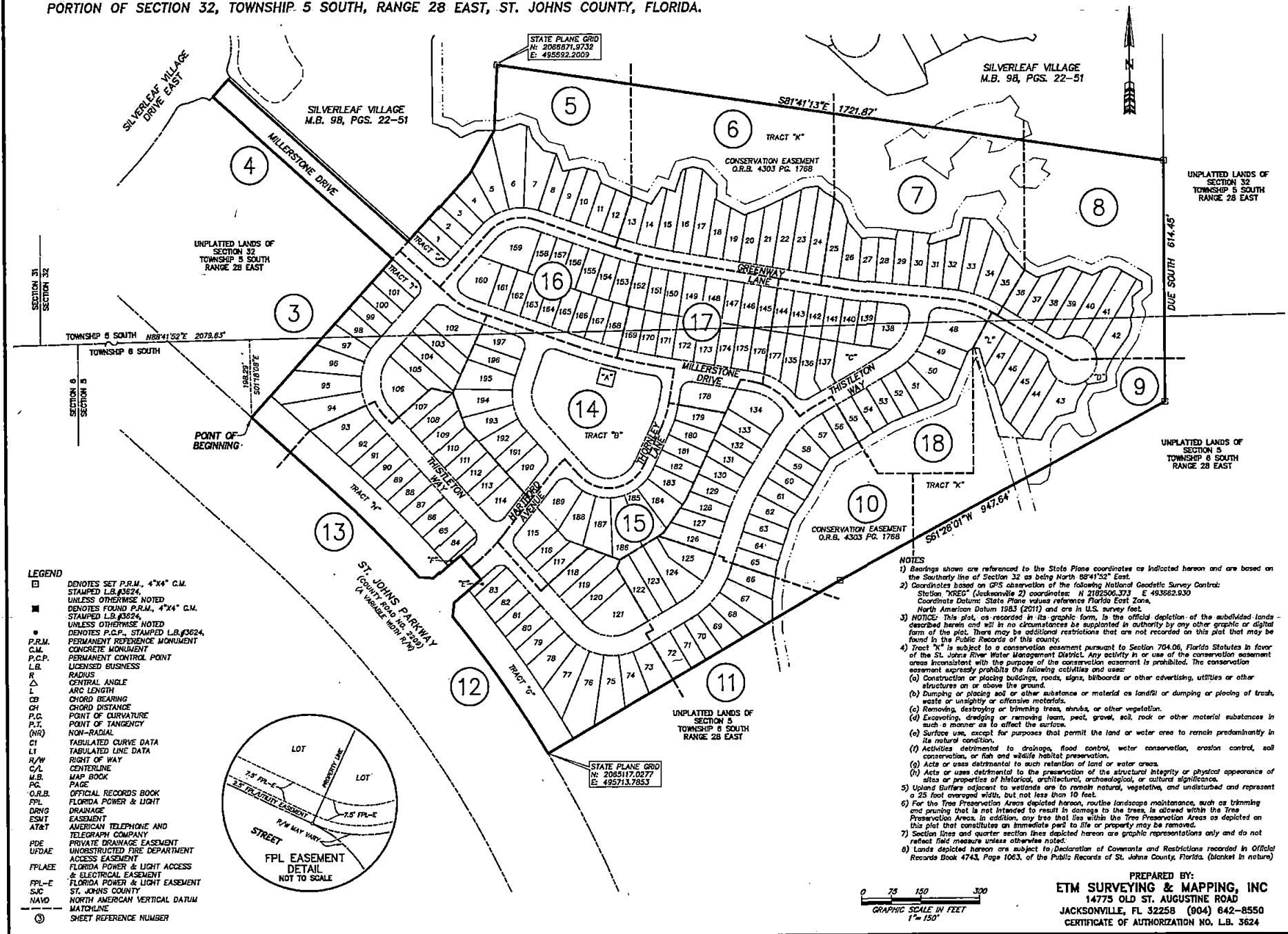
HARTFORD

(SILVERLEAF - PARCEL 17C)

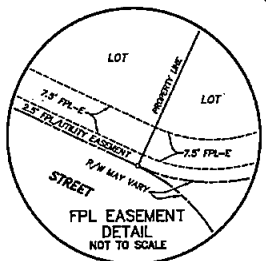
BEING A PORTION OF SECTION 5, TOWNSHIP 6 SOUTH, RANGE 28 EAST, TOGETHER WITH A PORTION OF SECTION 32, TOWNSHIP 5 SOUTH, RANGE 28 EAST, ST. JOHNS COUNTY, FLORIDA.

MAP BOOK PAGE

SHEET 2 OF 18 SHEETS



- LEGEND**
- DENOTES SET P.R.M., 4"x4" C.M. STAMPED L.B.#3624, UNLESS OTHERWISE NOTED
 - DENOTES FOUND P.R.M., 4"x4" C.M. STAMPED L.B.#3624, UNLESS OTHERWISE NOTED
 - DENOTES P.C.P., STAMPED L.B.#3624, UNLESS OTHERWISE NOTED
 - P.R.M. PERMANENT REFERENCE MONUMENT
 - C.M. CONCRETE MONUMENT
 - P.C.P. PERMANENT CONTROL POINT
 - L.B. LICENSED BUSINESS
 - R. RADIUS
 - △ CENTRAL ANGLE
 - L. ARC LENGTH
 - CB CHORD BEARING
 - CH CHORD DISTANCE
 - P.C. POINT OF CURVATURE
 - P.T. POINT OF TANGENCY
 - (NR) NON-RADIAL
 - LI TABULATED CURVE DATA
 - LI TABULATED LINE DATA
 - R/W RIGHT OF WAY
 - C/L CENTERLINE
 - M.B. MAP BOOK
 - P.C. PAGE
 - O.R.B. OFFICIAL RECORDS BOOK
 - FPL FLORIDA POWER & LIGHT
 - DRNG DRAINAGE
 - ESMT EASEMENT
 - AT&T AMERICAN TELEPHONE AND TELEGRAPH COMPANY
 - PDE PRIVATE DRAINAGE EASEMENT
 - UD&E UNOCCUPIED FIRE DEPARTMENT ACCESS EASEMENT
 - FPL&E FLORIDA POWER & LIGHT ACCESS & ELECTRICAL EASEMENT
 - FPL-E FLORIDA POWER & LIGHT EASEMENT
 - SJC ST. JOHNS COUNTY
 - NAVD NORTH AMERICAN VERTICAL DATUM
 - MATCHLINE
 - ③ SHEET REFERENCE NUMBER



- NOTES**
- 1) Bearings shown are referenced to the State Plane coordinates as indicated hereon and are based on the Southerly line of Section 32 as being North 89°45'52" East.
 - 2) Coordinates based on GPS observation of the following National Geodetic Survey Control Station "KREG" (Jacksonville 2) coordinates: N 2182506.373 E 493682.930. Coordinate Datum: State Plane values reference Florida East Zone, North American Datum 1983 (2011) and are in U.S. survey feet.
 - 3) NOTICE: This plat, as recorded in its graphic form, is the official depiction of the subdivided lands described herein and will in no circumstances be supplanted in authority by any other graphic or digital form of the plat. There may be additional restrictions that are not recorded on this plat that may be found in the Public Records of this county.
 - 4) Tract "X" is subject to a conservation easement pursuant to Section 704.06, Florida Statutes in favor of the St. Johns River Water Management District. Any activity in or use of the conservation easement areas inconsistent with the purposes of the conservation easement is prohibited. The conservation easement expressly prohibits the following activities and uses:
 - (a) Construction or placing buildings, roads, signs, billboards or other advertising, utilities or other structures on or above the ground.
 - (b) Dumping or placing soil or other substance or material as landfill or dumping or piling of trash, waste or unsightly or offensive materials.
 - (c) Removing, destroying or trimming trees, shrubs, or other vegetation.
 - (d) Excavating, dredging or removing loam, peat, gravel, soil, rock or other material substances in such a manner as to affect the surface.
 - (e) Surface use, except for purposes that permit the land or water area to remain predominantly in its natural condition.
 - (f) Activities detrimental to drainage, flood control, water conservation, erosion control, soil conservation, or fish and wildlife habitat preservation.
 - 5) Acts or uses detrimental to such retention of land or water areas.
 - (a) Acts or uses detrimental to the preservation of the structural integrity or physical appearance of sites or properties of historical, architectural, archaeological, or cultural significance.
 - (b) Acts or uses detrimental to the preservation of natural, vegetative, and undisturbed and represent a 25 foot covered width, but not less than 10 feet.
 - 6) For the Tree Preservation Areas depicted herein, routine landscape maintenance, such as trimming and pruning that is not intended to result in damage to the trees, is allowed within the Tree Preservation Areas. In addition, any tree that lies within the Tree Preservation Areas as depicted on this plat that constitutes an immediate peril to life or property may be removed.
 - 7) Section lines and quarter section lines depicted hereon are graphic representations only and do not reflect field measurements unless otherwise indicated.
 - 8) Lands depicted hereon are subject to Declaration of Covenants and Restrictions recorded in Official Records Book 4743, Page 1063, of the Public Records of St. Johns County, Florida, (blanket in nature).

PREPARED BY:
ETM SURVEYING & MAPPING, INC
 14775 OLD ST. AUGUSTINE ROAD
 JACKSONVILLE, FL 32258 (904) 642-8550
 CERTIFICATE OF AUTHORIZATION NO. L.B. 3624

HARTFORD

(SILVERLEAF - PARCEL 17C)

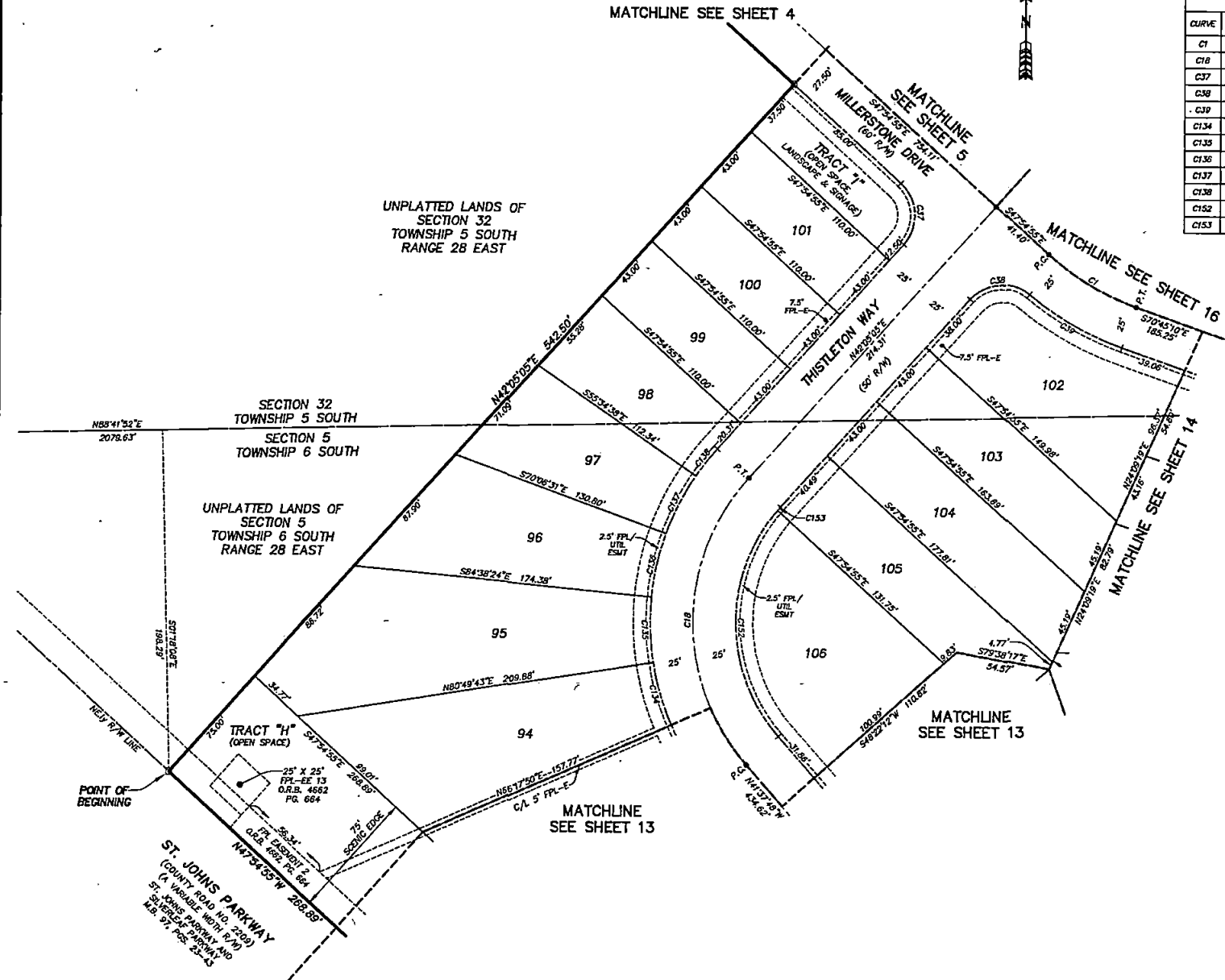
BEING A PORTION OF SECTION 5, TOWNSHIP 6 SOUTH, RANGE 28 EAST, TOGETHER WITH A PORTION OF SECTION 32, TOWNSHIP 5 SOUTH, RANGE 28 EAST, ST. JOHNS COUNTY, FLORIDA.

MAP BOOK PAGE

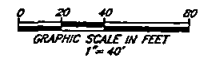
SHEET 3 OF 18 SHEETS

SEE SHEET 2 FOR NOTES

CURVE TABLE					
CURVE	RADIUS	CENTRAL ANGLE	ARC LENGTH	CHORD BEARING	CHORD DISTANCE
C1	150.00'	22°50'15"	58.79'	S59°20'03"E	59.39'
C1B	123.00'	83°42'53"	162.64'	N00°13'30"E	166.62'
C37	25.00'	90°00'00"	39.27'	N02°54'55"W	35.36'
C38	25.00'	87°32'08"	38.18'	S85°51'09"W	34.59'
C39	173.00'	20°22'23"	62.23'	S80°33'59"E	61.90'
C134	150.00'	14°31'53"	38.04'	S16°28'13"E	37.94'
C135	150.00'	14°31'53"	38.04'	S01°54'21"E	37.94'
C136	150.00'	14°31'53"	38.04'	S12°37'32"W	37.94'
C137	150.00'	14°31'53"	38.04'	S27°09'25"W	37.94'
C138	150.00'	7°39'43"	20.06'	S38°15'13"W	20.04'
C152	100.00'	82°16'41"	143.60'	S00°29'28"E	131.58'
C153	100.00'	1°26'13"	2.51'	S41°21'58"W	2.51'



- LEGEND**
- DENOTES SET P.R.M., 4"x4" C.M. STAMPED L.B.#3624, UNLESS OTHERWISE NOTED
 - DENOTES FOUND P.R.M., 4"x4" C.M. STAMPED L.B.#3624, UNLESS OTHERWISE NOTED
 - DENOTES P.G.P., STAMPED L.B.#3624, PERMANENT REFERENCE MONUMENT
 - PERMANENT CONTROL POINT
 - P.R.M. CONCRETE MONUMENT
 - C.M. PERMANENT CONTROL POINT
 - L.B. LICENSED BUSINESS
 - R. RADIUS
 - Δ CENTRAL ANGLE
 - L. ARC LENGTH
 - OB. CHORD BEARING
 - OD. CHORD DISTANCE
 - P.C. POINT OF CURVATURE
 - P.T. POINT OF TANGENCY
 - (NR) NON-RADIAL
 - CI TABULATED CURVE DATA
 - LI TABULATED LINE DATA
 - R/W RIGHT OF WAY
 - C/L CENTERLINE
 - M.B. MAP BOOK
 - PG. PAGE
 - Q.R.B. OPTICAL RECORDS BOOK
 - F.P.L. FLORIDA POWER & LIGHT
 - DRNG. DRAINAGE
 - ESMT. EASEMENT
 - AT&T. AMERICAN TELEPHONE AND TELEGRAPH COMPANY
 - PDE. PRIVATE DRAINAGE EASEMENT
 - UFDAE. UNOBSTRUCTED FIRE DEPARTMENT ACCESS EASEMENT
 - FPLAE. FLORIDA POWER & LIGHT ACCESS & ELECTRICAL EASEMENT
 - FPL-E. FLORIDA POWER & LIGHT EASEMENT
 - SIC. ST. JOHNS COUNTY
 - NAVD. NORTH AMERICAN VERTICAL DATUM
 - MATCHLINE
 - ③ SHEET REFERENCE NUMBER



PREPARED BY:
ETM SURVEYING & MAPPING, INC
 14775 OLD ST. AUGUSTINE ROAD
 JACKSONVILLE, FL 32258 (904) 642-8550
 CERTIFICATE OF AUTHORIZATION NO. L.B. 3624

HARTFORD

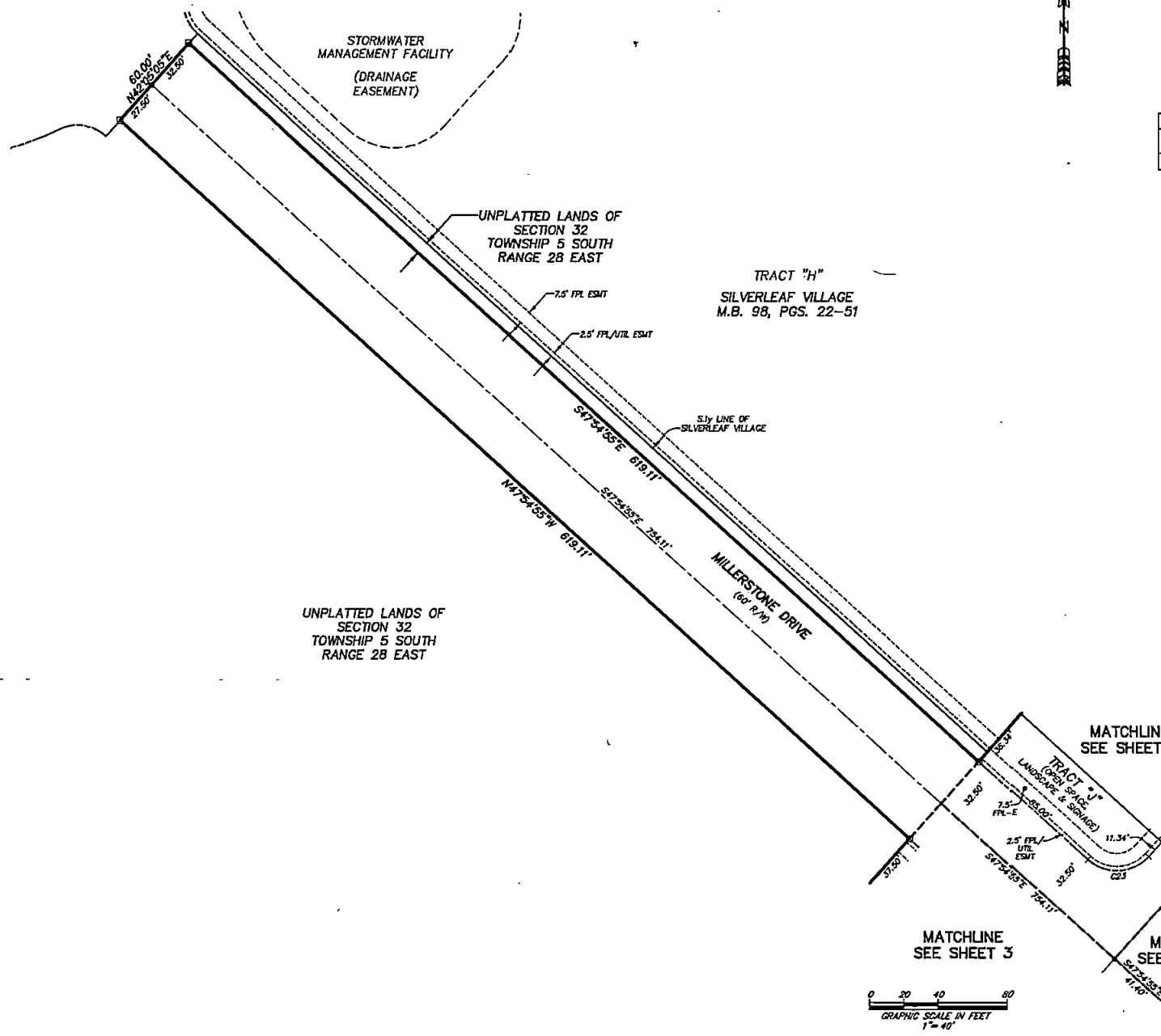
(SILVERLEAF - PARCEL 17C)

BEING A PORTION OF SECTION 5, TOWNSHIP 6 SOUTH, RANGE 28 EAST, TOGETHER WITH A PORTION OF SECTION 32, TOWNSHIP 5 SOUTH, RANGE 28 EAST, ST. JOHNS COUNTY, FLORIDA.

MAP BOOK PAGE

SHEET 4 OF 18 SHEETS

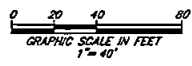
SEE SHEET 2 FOR NOTES



CURVE TABLE					
CURVE	RADIUS	CENTRAL ANGLE	ARC LENGTH	CHORD BEARING	CHORD DISTANCE
C23	23.00'	90°00'00"	33.27'	N87°05'05\"/>	

LEGEND

- DENOTES SET P.R.M., 4"x4" C.M. STAMPED L.B.#3624, UNLESS OTHERWISE NOTED
- DENOTES FOUND P.R.M., 4"x4" C.M. STAMPED L.B.#3624, UNLESS OTHERWISE NOTED
- DENOTES P.C.P., STAMPED L.B.#3624
- P.R.M. PERMANENT REFERENCE MONUMENT
- C.M. CONCRETE MONUMENT
- P.C.P. PERMANENT CONTROL POINT
- L.B. LICENSED BUSINESS
- R. RADIUS
- Δ CENTRAL ANGLE
- L. ARC LENGTH
- CB. CHORD BEARING
- CD. CHORD DISTANCE
- P.C. POINT OF CURVATURE
- P.T. POINT OF TANGENCY
- (NR) NON-RADIAL
- CI. TABULATED CURVE DATA
- LI. TABULATED LINE DATA
- R/W. RIGHT OF WAY
- C/L. CENTERLINE
- M.B. MAP BOOK
- P.G. PAGE
- O.R.B. OFFICIAL RECORDS BOOK
- FPL. FLORIDA POWER & LIGHT
- DRNG. DRAINAGE
- ESMT. EASEMENT
- AT&T. AMERICAN TELEPHONE AND TELEGRAPH COMPANY
- PDE. PRIVATE DRAINAGE EASEMENT
- UFDAE. UNOBSTRUCTED FIRE DEPARTMENT ACCESS EASEMENT
- FPLAE. FLORIDA POWER & LIGHT ACCESS & ELECTRICAL EASEMENT
- FPL-E. FLORIDA POWER & LIGHT EASEMENT
- S/C. ST. JOHNS COUNTY
- N/A. NORTH AMERICAN VERTICAL DATUM
- MATCHLINE. MATCHLINE
- ③. SHEET REFERENCE NUMBER



PREPARED BY:
ETM SURVEYING & MAPPING, INC
 14775 OLD ST. AUGUSTINE ROAD
 JACKSONVILLE, FL 32258 (904) 642-8550
 CERTIFICATE OF AUTHORIZATION NO. L.B. 3624

HARTFORD

(SILVERLEAF - PARCEL 17C)

BEING A PORTION OF SECTION 5, TOWNSHIP 6 SOUTH, RANGE 28 EAST, TOGETHER WITH A PORTION OF SECTION 32, TOWNSHIP 5 SOUTH, RANGE 28 EAST, ST. JOHNS COUNTY, FLORIDA.

MAP BOOK PAGE

SHEET 5 OF 18 SHEETS

SEE SHEET 2 FOR NOTES

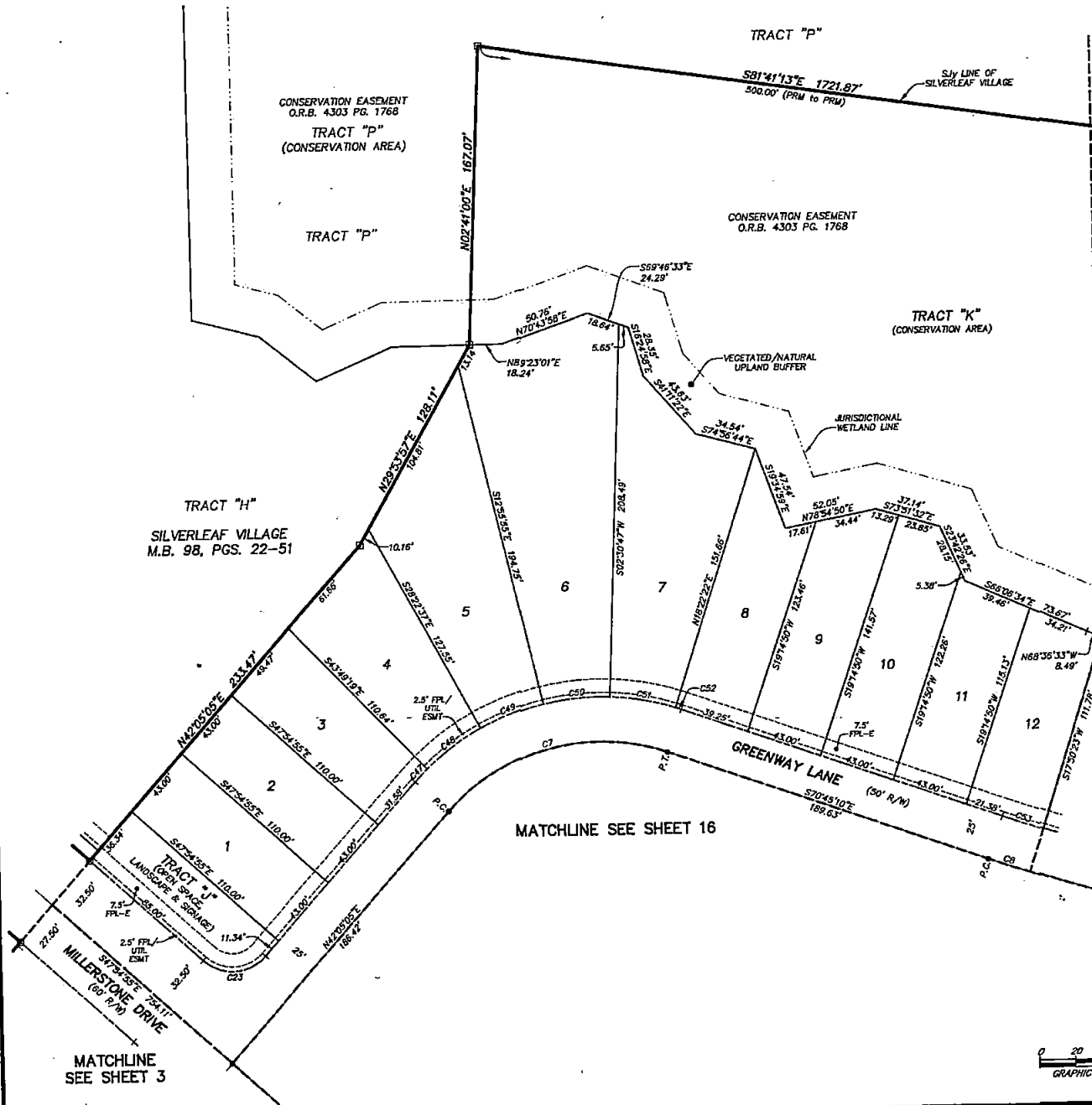
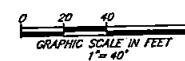
CURVE TABLE					
CURVE	RADIUS	CENTRAL ANGLE	ARC LENGTH	CHORD BEARING	CHORD DISTANCE
C7	115.00'	67°09'45"	134.80'	N75°39'37"E	127.22'
C8	1000.00'	10°00'13"	174.60'	S75°45'17"E	174.38'
C23	25.00'	90°00'00"	39.27'	N87°05'05"E	35.38'
C47	140.00'	4°05'38"	10.00'	S44°07'53"W	10.00'
C48	140.00'	15°28'42"	37.74'	S33°54'02"W	37.62'
C49	140.00'	15°28'42"	37.74'	S69°20'44"W	37.62'
C50	140.00'	15°28'42"	37.74'	S84°47'26"W	37.62'
C51	140.00'	15°19'31"	37.45'	N79°49'28"W	37.34'
C52	140.00'	1°24'32"	3.44'	N71°27'26"W	3.44'
C53	975.00'	1°24'27"	23.95'	S71°27'24"E	23.95'

MATCHLINE SEE SHEET 6

LEGEND

- DENOTES SET P.R.M., 4"x4" C.M. STAMPED L.B.#3824, UNLESS OTHERWISE NOTED
- DENOTES FOUND P.R.M., 4"x4" C.M. STAMPED L.B.#3824, UNLESS OTHERWISE NOTED
- DENOTES P.C.P., STAMPED L.B.#3824, UNLESS OTHERWISE NOTED
- P.R.M. PERMANENT REFERENCE MONUMENT
- C.M. CONCRETE MONUMENT
- P.C.P. PERMANENT CONTROL POINT
- L.B. LICENSED BUSINESS
- R. RADIUS
- Δ CENTRAL ANGLE
- L. ARC LENGTH
- CH. CHORD BEARING
- CH. CHORD DISTANCE
- P.C. POINT OF CURVATURE
- P.T. POINT OF TANGENCY
- (NR) NON-RADIAL
- LI TABULATED CURVE DATA
- LI TABULATED LINE DATA
- R/W RIGHT OF WAY
- C/L CENTERLINE
- M.B. MAP BOOK
- P.C. PAGE
- O.R.B. OFFICIAL RECORDS BOOK
- FPL FLORIDA POWER & LIGHT
- DRNG DRAINAGE
- ESMT EASEMENT
- AT&T AMERICAN TELEPHONE AND TELEGRAPH COMPANY
- PDE PRIVATE DRAINAGE EASEMENT
- UPDAE UNOCCUPIED FIRE DEPARTMENT ACCESS EASEMENT
- FPLAE FLORIDA POWER & LIGHT ACCESS & ELECTRICAL EASEMENT
- FPL-E FLORIDA POWER & LIGHT EASEMENT
- SJC ST. JOHNS COUNTY
- NAVD NORTH AMERICAN VERTICAL DATUM
- MATCHLINE MATCHLINE
- ⑤ SHEET REFERENCE NUMBER

PREPARED BY:
ETM SURVEYING & MAPPING, INC
 14775 OLD ST. AUGUSTINE ROAD
 JACKSONVILLE, FL 32258 (904) 642-8550
 CERTIFICATE OF AUTHORIZATION NO. L.B. 3624



MATCHLINE
SEE SHEET 3

MATCHLINE SEE SHEET 16

HARTFORD

(SILVERLEAF - PARCEL 17C)

BEING A PORTION OF SECTION 5, TOWNSHIP 6 SOUTH, RANGE 28 EAST, TOGETHER WITH A PORTION OF SECTION 32, TOWNSHIP 5 SOUTH, RANGE 28 EAST, ST. JOHNS COUNTY, FLORIDA.

MAP BOOK PAGE

SHEET 7 OF 18 SHEETS

SEE SHEET 2 FOR NOTES

CURVE TABLE					
CURVE	RADIUS	CENTRAL ANGLE	ARC LENGTH	CHORD BEARING	CHORD DISTANCE
C9	1000.00'	3°44'11"	65.21'	S82°37'29"E	65.20'
C10	300.00'	25°27'33"	133.30'	S71°45'48"E	132.21'
C58	875.00'	2°08'47"	36.53'	S81°49'47"E	36.52'
C59	875.00'	1°35'24"	27.06'	S83°41'53"E	27.06'
C60	325.00'	4°33'16"	25.63'	N82°12'57"W	25.63'
C61	325.00'	7°08'45"	40.53'	N78°21'57"W	40.51'
C62	325.00'	7°08'45"	40.53'	N69°13'12"W	40.51'
C63	325.00'	6°36'48"	37.51'	N62°20'25"W	37.48'

LINE TABLE		
LINE	BEARING	LENGTH
LB	S49°48'07"E	28.18'
LP	S21°45'16"W	25.83'
L10	S82°47'50"E	12.01'

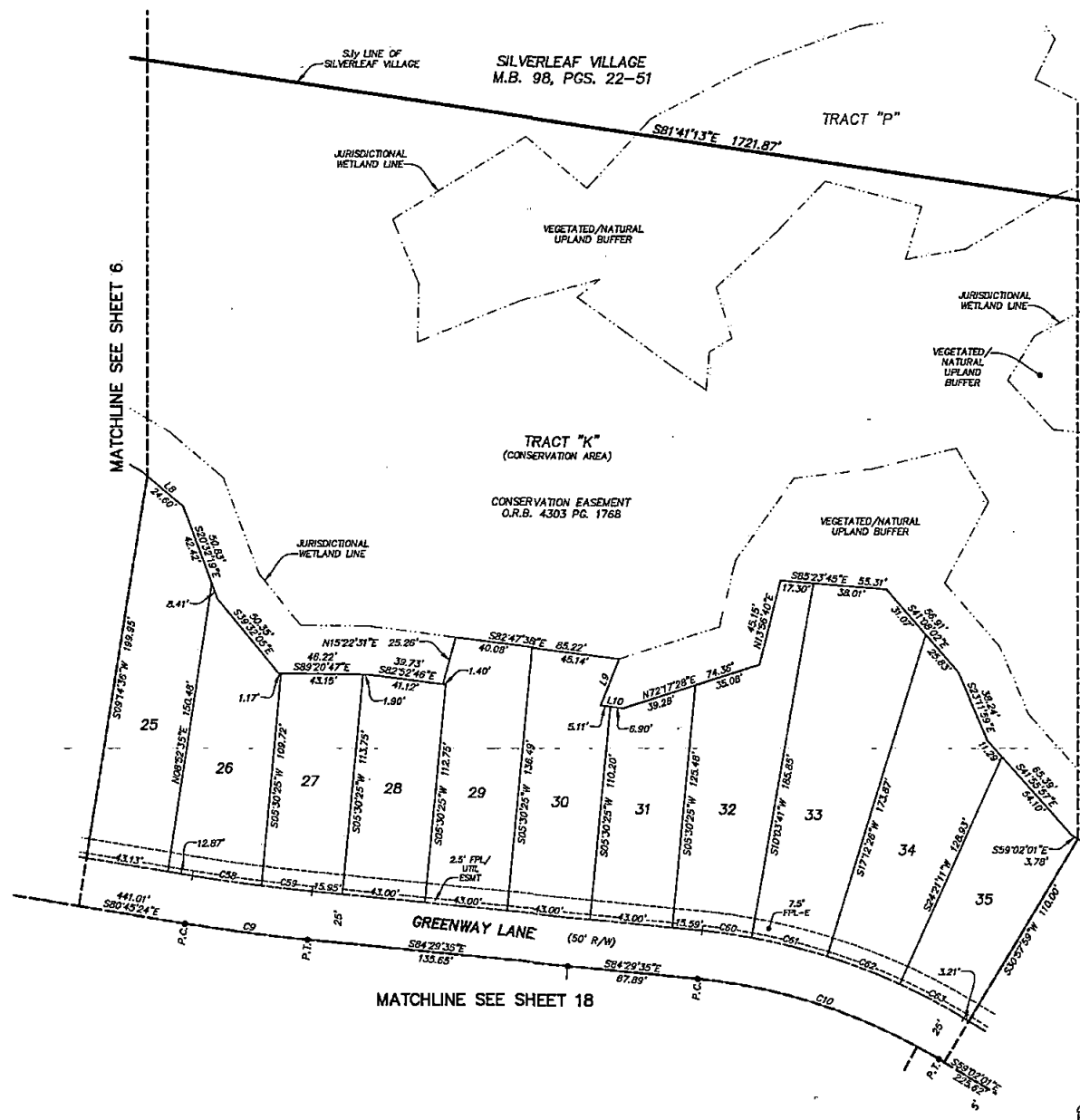
LEGEND

- DENOTES SET P.R.M., 4"x4" C.M. STAMPED L.B.#3524, UNLESS OTHERWISE NOTED
- DENOTES FOUND P.R.M., 4"x4" C.M. STAMPED L.B.#3824, UNLESS OTHERWISE NOTED
- DENOTES P.C.P., STAMPED L.B.#3524
- P.R.M. PERMANENT REFERENCE MONUMENT
- C.M. CONCRETE MONUMENT
- P.C.P. PERMANENT CONTROL POINT
- L.B. LICENSED BUSINESS
- R RADIUS
- ∠ CENTRAL ANGLE
- L ARC LENGTH
- CB CHORD BEARING
- CH CHORD DISTANCE
- P.C. POINT OF CURVATURE
- P.T. POINT OF TANGENCY
- (NR) NON-RADIAL
- CI TABULATED CURVE DATA
- L1 TABULATED LINE DATA
- R/W RIGHT OF WAY
- C/L CENTERLINE
- M.B. MAP BOOK
- P.G. PAGE
- O.R.B. OFFICIAL RECORDS BOOK
- PFL FLORIDA POWER & LIGHT
- DRNG DRAINAGE
- ESMT EASEMENT
- AT&T AMERICAN TELEPHONE AND TELEGRAPH COMPANY
- PDE PRIVATE DRAINAGE EASEMENT
- UPDAE UNOBSTRUCTED FIRE DEPARTMENT ACCESS EASEMENT
- FPLAE FLORIDA POWER & LIGHT ACCESS & ELECTRICAL EASEMENT
- FPL-E FLORIDA POWER & LIGHT EASEMENT
- SJC ST. JOHNS COUNTY
- NAVD NORTH AMERICAN VERTICAL DATUM
- MATCHLINE MATCHLINE
- ③ SHEET REFERENCE NUMBER

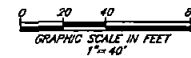


MATCHLINE SEE SHEET 8

MATCHLINE SEE SHEET 6



MATCHLINE SEE SHEET 18



PREPARED BY:
ETM SURVEYING & MAPPING, INC
14775 OLD ST. AUGUSTINE ROAD
JACKSONVILLE, FL 32258 (904) 642-8550
CERTIFICATE OF AUTHORIZATION NO. L.B. 3624

HARTFORD

(SILVERLEAF - PARCEL 17C)

BEING A PORTION OF SECTION 5, TOWNSHIP 6 SOUTH, RANGE 28 EAST, TOGETHER WITH A PORTION OF SECTION 32, TOWNSHIP 5 SOUTH, RANGE 28 EAST, ST. JOHNS COUNTY, FLORIDA.

MAP BOOK PAGE

SHEET 8 OF 18 SHEETS

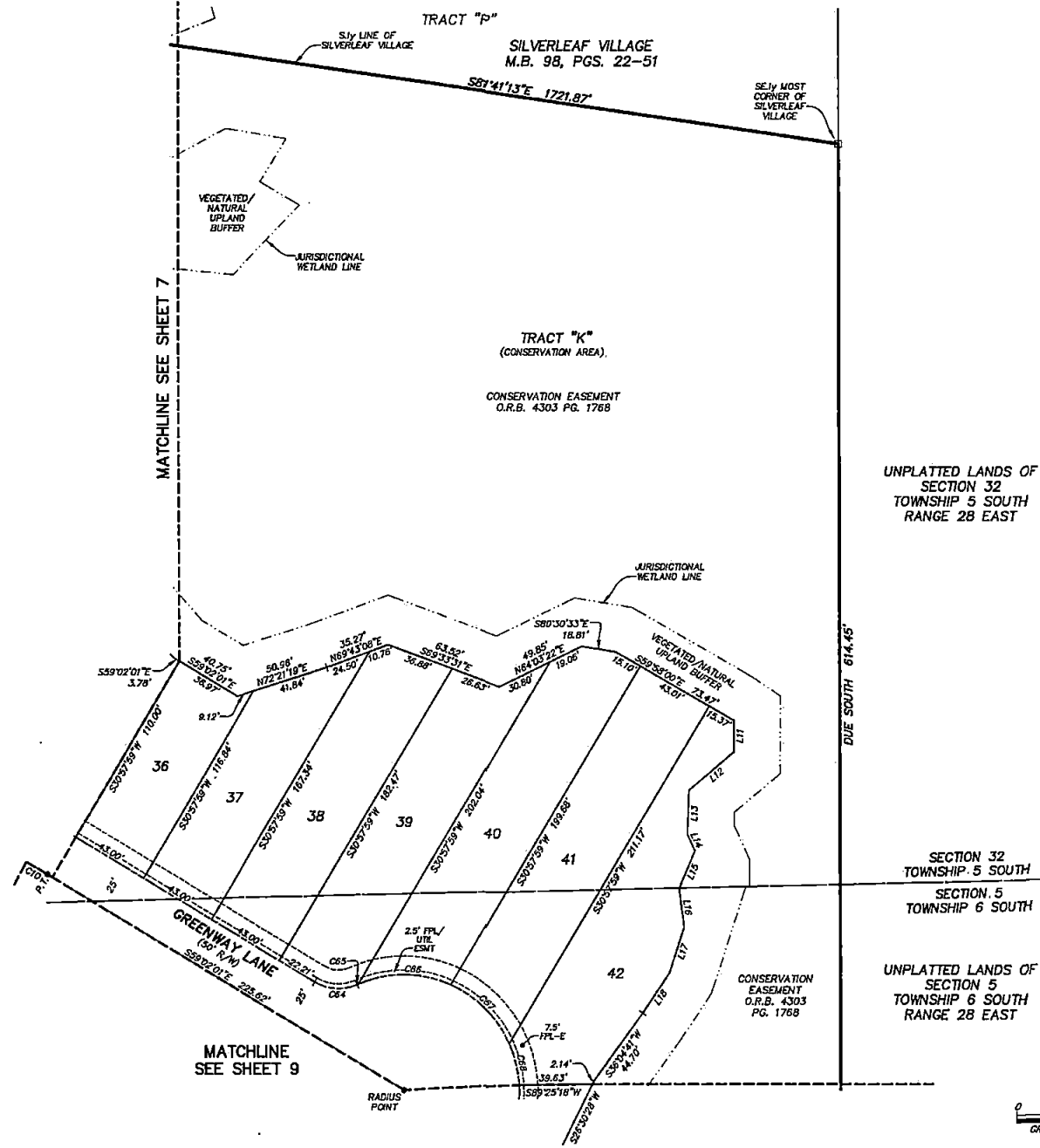
SEE SHEET 2 FOR NOTES

CURVE TABLE					
CURVE	RADIUS	CENTRAL ANGLE	ARC LENGTH	CHORD BEARING	CHORD DISTANCE
C10	300.00'	25°27'33"	133.30'	S71°45'48"E	132.21'
C64	25.00'	54°55'14"	23.96'	S66°29'36"E	23.05'
C65	62.00'	0°31'31"	0.57'	S66°18'31"W	0.57'
C66	62.00'	47°31'54"	51.43'	N60°39'47"W	48.97'
C67	62.00'	41°33'48"	43.34'	N44°56'56"W	44.33'
C68	62.00'	21°05'30"	22.62'	N13°27'18"W	22.69'

LINE TABLE		
LINE	BEARING	LENGTH
L11	S00°18'52"W	16.60'
L12	S49°45'07"W	31.78'
L13	S02°00'00"W	23.92'
L14	S24°21'35"E	9.64'
L15	S23°12'12"W	21.83'
L16	S07°32'15"E	20.74'
L17	S18°05'02"W	26.10'
L18	S34°04'45"W	26.02'

LEGEND

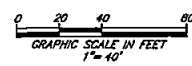
- DENOTES SET P.R.M., 4"x4" C.M. STAMPED L.B.#3524, UNLESS OTHERWISE NOTED
- DENOTES FOUND P.R.M., 4"x4" C.M. STAMPED L.B.#3524, UNLESS OTHERWISE NOTED
- DENOTES P.C.P., STAMPED L.B.#3524
- P.R.M. PERMANENT REFERENCE MONUMENT
- C.M. CONCRETE MONUMENT
- P.C.P. PERMANENT CONTROL POINT
- L.B. LICENSED BUSINESS
- R RADIUS
- Δ CENTRAL ANGLE
- ∠ ARC LENGTH
- CH CHORD BEARING
- CH CHORD DISTANCE
- P.C. POINT OF CURVATURE
- P.T. POINT OF TANGENCY
- (NR) NON-RADIAL
- CI TABULATED CURVE DATA
- LI TABULATED LINE DATA
- R/W RIGHT OF WAY
- C/L CENTERLINE
- M.B. MAP BOOK
- PG. PAGE
- O.R.B. OFFICIAL RECORDS BOOK
- FPL FLORIDA POWER & LIGHT
- DRNG DRAINAGE
- ESMT EASEMENT
- AT&T AMERICAN TELEPHONE AND TELEGRAPH COMPANY
- PDE PRIVATE DRAINAGE EASEMENT
- UPDAE UNOBSTRUCTED FIRE DEPARTMENT ACCESS EASEMENT
- FPLAE FLORIDA POWER & LIGHT ACCESS & ELECTRICAL EASEMENT
- FPL-E FLORIDA POWER & LIGHT EASEMENT
- S.J.C. ST. JOHNS COUNTY
- NAVD NORTH AMERICAN VERTICAL DATUM
- MATCHLINE MATCHLINE
- ③ SHEET REFERENCE NUMBER



UNPLATTED LANDS OF SECTION 32 TOWNSHIP 5 SOUTH RANGE 28 EAST

SECTION 32 TOWNSHIP 5 SOUTH SECTION 5 TOWNSHIP 6 SOUTH

UNPLATTED LANDS OF SECTION 5 TOWNSHIP 6 SOUTH RANGE 28 EAST



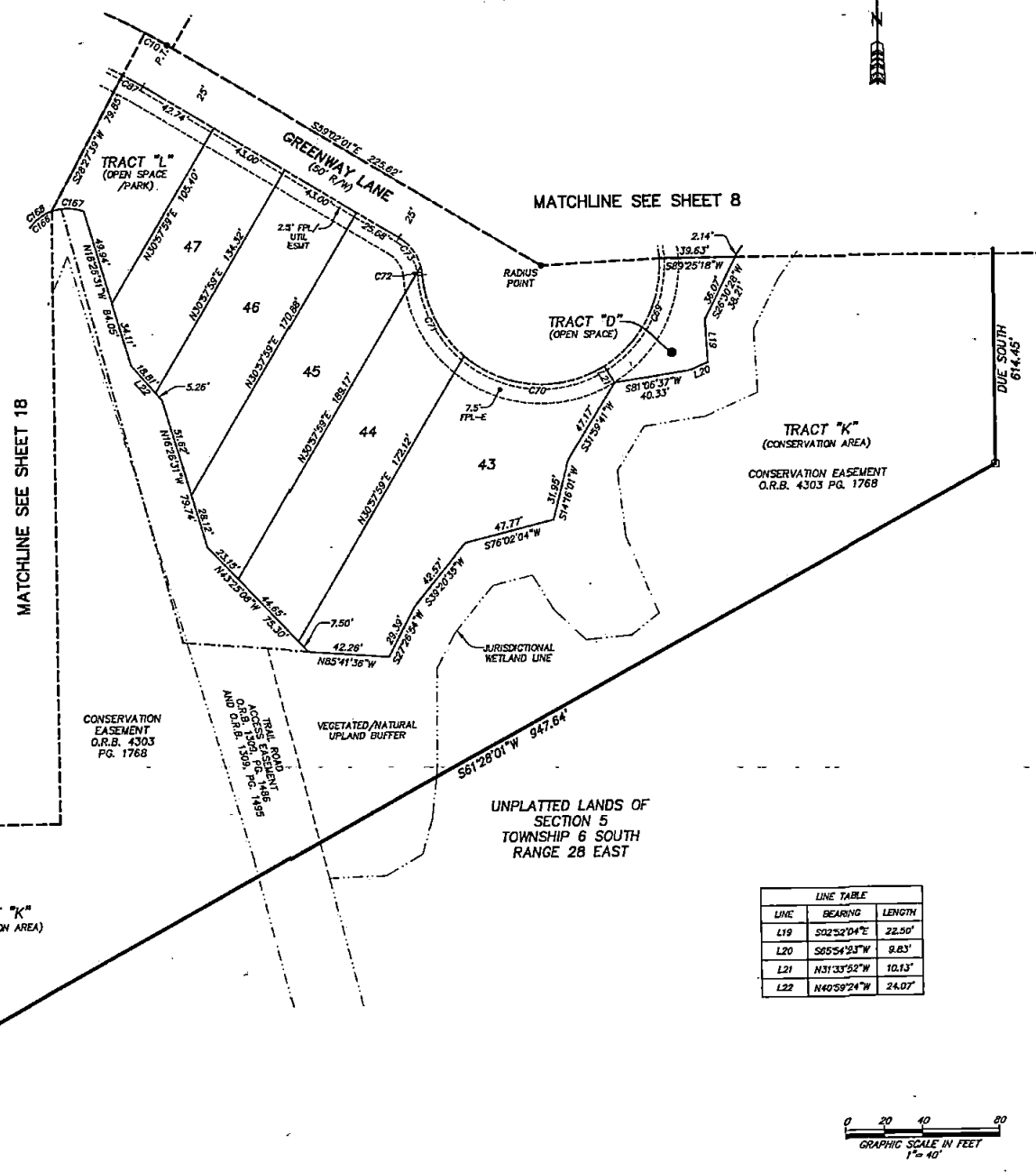
PREPARED BY:
ETM SURVEYING & MAPPING, INC
14775 OLD ST. AUGUSTINE ROAD
JACKSONVILLE, FL 32258 (904) 642-8550
CERTIFICATE OF AUTHORIZATION NO. L.B. 3524

HARTFORD

(SILVERLEAF - PARCEL 17C)

BEING A PORTION OF SECTION 5, TOWNSHIP 6 SOUTH, RANGE 28 EAST, TOGETHER WITH A PORTION OF SECTION -32, TOWNSHIP 5 SOUTH, RANGE 28 EAST, ST. JOHNS COUNTY, FLORIDA.

CURVE TABLE					
CURVE	RADIUS	CENTRAL ANGLE	ARC LENGTH	CHORD BEARING	CHORD DISTANCE
C10	300.00'	25°27'33"	133.30'	S71°45'48"E	132.21'
C69	62.00'	61°20'41"	66.38'	N27°45'47"E	63.26'
C70	62.00'	72°37'57"	78.60'	S85°14'54"E	73.44'
C71	62.00'	44°49'08"	48.50'	S28°31'21"E	47.27'
C72	25.00'	11°03'39"	4.83'	N09°38'37"W	4.82'
C73	25.00'	43°51'35"	19.14'	N37°06'14"W	18.67'
C87	275.00'	2°30'19"	12.02'	N60°17'11"W	12.02'
C166	25.00'	87°29'55"	38.15'	S66°42'42"W	34.55'
C167	25.00'	39°12'45"	17.11'	N89°10'42"W	16.78'
C168	25.00'	35°40'25"	15.57'	S53°22'43"W	15.32'



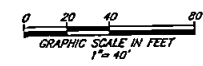
MATCHLINE SEE SHEET 8

MATCHLINE SEE SHEET 18

MATCHLINE SEE SHEET 10

- LEGEND**
- DENOTES SET P.R.M., 4"x4" C.M. STAMPED L.B.#3524, UNLESS OTHERWISE NOTED
 - DENOTES FOUND P.R.M., 4"x4" C.M. STAMPED L.B.#3624, UNLESS OTHERWISE NOTED
 - DENOTES P.C.P., STAMPED L.B.#3624, UNLESS OTHERWISE NOTED
 - P.R.M. PERMANENT REFERENCE MONUMENT
 - C.M. CONCRETE MONUMENT
 - P.C.P. PERMANENT CONTROL POINT
 - L.B. LICENSED BUSINESS
 - R. RADIUS
 - ∠ CENTRAL ANGLE
 - L. ARC LENGTH
 - CB. CHORD BEARING
 - CH. CHORD DISTANCE
 - P.C. POINT OF CURVATURE
 - P.T. POINT OF TANGENCY
 - (NR) NON-RADIAL
 - C1. TABULATED CURVE DATA
 - L1. TABULATED LINE DATA
 - R/W. RIGHT OF WAY
 - C/L. CENTERLINE
 - M.B. MAP BOOK - PAGE
 - O.R.B. OFFICIAL RECORDS BOOK
 - FPL. FLORIDA POWER & LIGHT
 - DRNG. DRAINAGE
 - ESMT. EASEMENT
 - AT&T. AMERICAN TELEPHONE AND TELEGRAPH COMPANY
 - PDE. PRIVATE DRAINAGE EASEMENT
 - UFDAE. UNOBSTRUCTED FIRE DEPARTMENT ACCESS EASEMENT
 - FPLAEE. FLORIDA POWER & LIGHT ACCESS & ELECTRICAL EASEMENT
 - FPL-E. FLORIDA POWER & LIGHT EASEMENT
 - SJC. ST. JOHNS COUNTY
 - NAD. NORTH AMERICAN VERTICAL DATUM
 - MATCHLINE
 - ③. SHEET REFERENCE NUMBER

LINE TABLE		
LINE	BEARING	LENGTH
L19	S02°52'04"E	22.50'
L20	S05°54'53"W	9.83'
L21	N31°33'52"W	10.13'
L22	N40°59'24"W	24.07'



PREPARED BY:
ETM SURVEYING & MAPPING, INC
 14775 OLD ST. AUGUSTINE ROAD
 JACKSONVILLE, FL 32258 (904) 642-8550
 CERTIFICATE OF AUTHORIZATION NO. L.B. 3624

HARTFORD

(SILVERLEAF - PARCEL 17C)

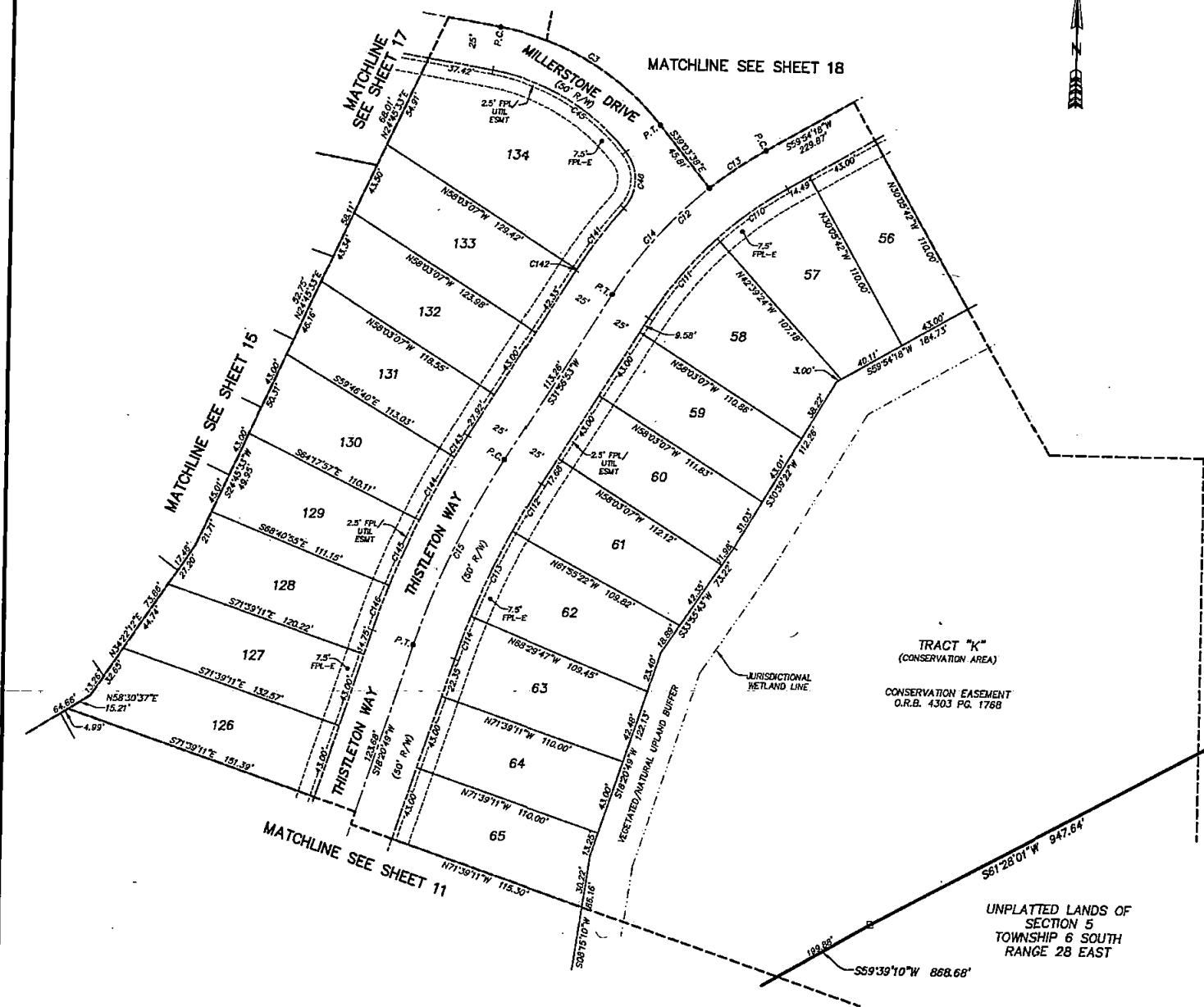
BEING A PORTION OF SECTION 5, TOWNSHIP 6 SOUTH, RANGE 28 EAST, TOGETHER WITH A PORTION OF SECTION 32, TOWNSHIP 5 SOUTH, RANGE 28 EAST, ST. JOHNS COUNTY, FLORIDA.

MAP BOOK PAGE

SHEET 10 OF 18 SHEETS

SEE SHEET 2 FOR NOTES

CURVE TABLE					
CURVE	RADIUS	CENTRAL ANGLE	ARC LENGTH	CHORD BEARING	CHORD DISTANCE
C12	250.00'	275°22'	121.89'	S45°33'33"W	120.79'
C13	250.00'	89°56'	39.12'	S55°25'20"W	38.09'
C14	250.00'	185°28'	82.87'	S41°26'37"W	82.49'
C15	500.00'	135°03'	118.69'	S25°08'51"W	118.41'
C15	125.00'	41°42'03"	80.98'	N59°54'22"W	83.98'
C16	25.00'	80°24'04"	35.08'	N01°08'41"E	32.27'
C110	225.00'	123°42'	49.33'	S53°37'27"W	48.23'
C111	225.00'	152°43'	60.46'	S39°38'44"W	60.28'
C112	475.00'	352°15'	32.09'	S30°00'45"W	32.08'
C113	475.00'	63°42'	54.50'	S24°47'25"W	54.47'
C114	475.00'	319°23'	26.17'	S19°59'31"W	26.17'
C141	275.00'	91°33'	44.28'	S36°43'55"W	44.24'
C142	275.00'	0°10'15"	0.82'	S32°02'00"W	0.82'
C143	525.00'	134°48'	14.48'	S31°09'29"W	14.43'
C144	525.00'	431°20'	41.44'	S28°08'23"W	41.43'
C145	525.00'	431°41'	41.49'	S23°34'55"W	41.48'
C146	525.00'	2°58'15"	27.22'	S19°49'57"W	27.22'

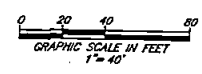


MATCHLINE SEE SHEET 9

- LEGEND**
- ☐ DENOTES SET P.R.M., 4"x4" C.M. STAMPED L.B.#3524 UNLESS OTHERWISE NOTED
 - DENOTES FOUND P.R.M., 4"x4" C.M. STAMPED L.B.#3824 UNLESS OTHERWISE NOTED
 - DENOTES P.C.P., STAMPED L.B.#3524
 - P.R.M. PERMANENT REFERENCE MONUMENT
 - C.M. CONCRETE MONUMENT
 - P.C.P. PERMANENT CONTROL POINT
 - L.B. LICENSED BUSINESS
 - R. RADIUS
 - CA. CENTRAL ANGLE
 - AL. ARC LENGTH
 - CB. CHORD BEARING
 - CD. CHORD DISTANCE
 - P.C. POINT OF CURVATURE
 - P.T. POINT OF TANGENCY
 - (NR) NON-RADIAL
 - CI. TABULATED CURVE DATA
 - LI. TABULATED LINE DATA
 - R/W. RIGHT OF WAY
 - C/L. CENTERLINE
 - M.B. MAP BOOK
 - PG. PAGE
 - O.R.B. OFFICIAL RECORDS BOOK
 - FPL. FLORIDA POWER & LIGHT
 - DRNG. DRAINAGE
 - ESMT. EASEMENT
 - AT&T. AMERICAN TELEPHONE AND TELEGRAPH COMPANY
 - PDE. PRIVATE DRAINAGE EASEMENT
 - UPDAE. UNOBSTRUCTED FIRE DEPARTMENT ACCESS EASEMENT
 - FPLAE. FLORIDA POWER & LIGHT ACCESS & ELECTRICAL EASEMENT
 - FPL-E. FLORIDA POWER & LIGHT EASEMENT
 - S/E. ST. JOHNS COUNTY
 - NAVD. NORTH AMERICAN VERTICAL DATUM
 - MATCHLINE
 - ① SHEET REFERENCE NUMBER

TRACT "K"
(CONSERVATION AREA)
CONSERVATION EASEMENT
O.R.B. 4303 PG. 1768

UNPLATTED LANDS OF SECTION 5 TOWNSHIP 6 SOUTH RANGE 28 EAST



PREPARED BY:
ETM SURVEYING & MAPPING, INC
14775 OLD ST. AUGUSTINE ROAD
JACKSONVILLE, FL 32258 (904) 642-8550
CERTIFICATE OF AUTHORIZATION NO. L.B. 5624

HARTFORD

(SILVERLEAF - PARCEL 17C)

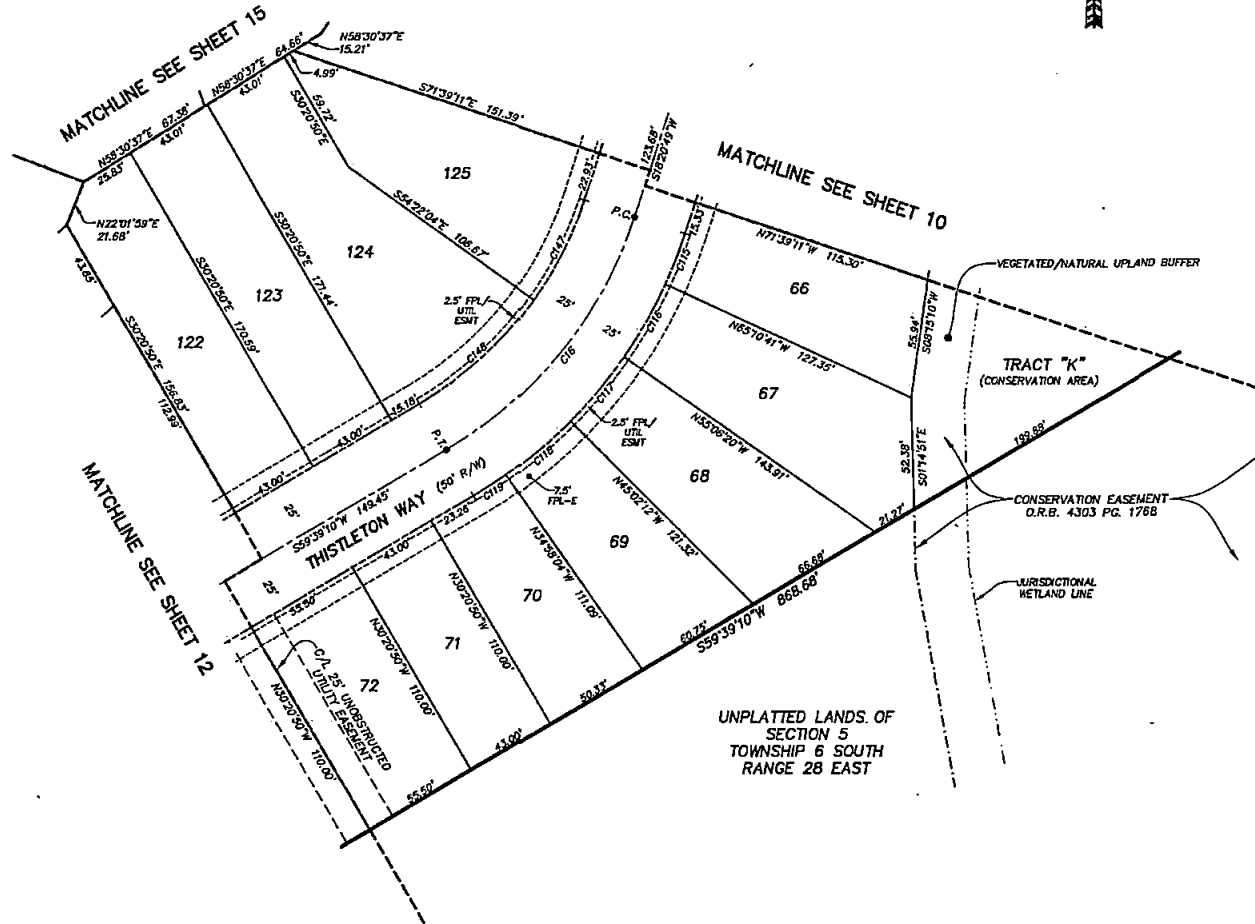
BEING A PORTION OF SECTION 5, TOWNSHIP 6 SOUTH, RANGE 28 EAST, TOGETHER WITH A PORTION OF SECTION 32, TOWNSHIP 5 SOUTH, RANGE 28 EAST, ST. JOHNS COUNTY, FLORIDA.

MAP BOOK PAGE

SHEET 11 OF 18 SHEETS

SEE SHEET 2 FOR NOTES

CURVE TABLE					
CURVE	RADIUS	CENTRAL ANGLE	ARC LENGTH	CHORD BEARING	CHORD DISTANCE
C16	200.00'	41°16'20"	144.18'	S39°00'00"W	141.08'
C15	225.00'	6°28'42"	25.44'	N21°35'11"E	25.43'
C18	225.00'	10°04'08"	39.54'	N29°51'36"E	39.49'
C17	225.00'	10°04'08"	39.54'	N39°55'44"E	39.49'
C18	225.00'	10°04'08"	39.54'	N49°59'52"E	39.49'
C19	225.00'	4°37'13"	18.14'	N57°20'33"E	18.14'
C147	175.00'	17°17'06"	52.79'	N26°59'23"E	52.59'
C148	175.00'	24°07'14"	73.37'	N47°38'33"E	72.83'



LEGEND

- DENOTES SET P.R.M., 4"x4" C.M. STAMPED L.B.#3824, UNLESS OTHERWISE NOTED
- DENOTES FOUND P.R.M., 4"x4" C.M. STAMPED L.B.#3824, UNLESS OTHERWISE NOTED
- P.R.M. PERMANENT REFERENCE MONUMENT
- C.M. CONCRETE MONUMENT
- P.C.P. PERMANENT CONTROL POINT
- L.B. LICENSED BUSINESS
- RADIUS
- △ CENTRAL ANGLE
- ARC LENGTH
- CHORD BEARING
- CHORD DISTANCE
- P.C. POINT OF CURVATURE
- P.T. POINT OF TANGENCY
- (NR) NON-RADIAL
- CT TABULATED CURVE DATA
- LI TABULATED LINE DATA
- R/W RIGHT OF WAY
- C/L CENTERLINE
- M.B. MAP BOOK
- PG. PAGE
- O.R.B. OFFICIAL RECORDS BOOK
- FPL FLORIDA POWER & LIGHT
- DRNG DRAINAGE
- ESMT EASEMENT
- AT&T AMERICAN TELEPHONE AND TELEGRAPH COMPANY
- PDE PRIVATE DRAINAGE EASEMENT
- UFD&E UNRESTRICTED FIRE DEPARTMENT ACCESS EASEMENT
- FPL&E FLORIDA POWER & LIGHT ACCESS & ELECTRICAL EASEMENT
- FPL-E FLORIDA POWER & LIGHT EASEMENT
- SJC ST. JOHNS COUNTY
- NAD80 NORTH AMERICAN VERTICAL DATUM
- MATCHLINE
- ① SHEET REFERENCE NUMBER



PREPARED BY:
ETM SURVEYING & MAPPING, INC
 14775 OLD ST. AUGUSTINE ROAD
 JACKSONVILLE, FL 32258 (904) 642-8550
 CERTIFICATE OF AUTHORIZATION NO. L.B. 3824

HARTFORD

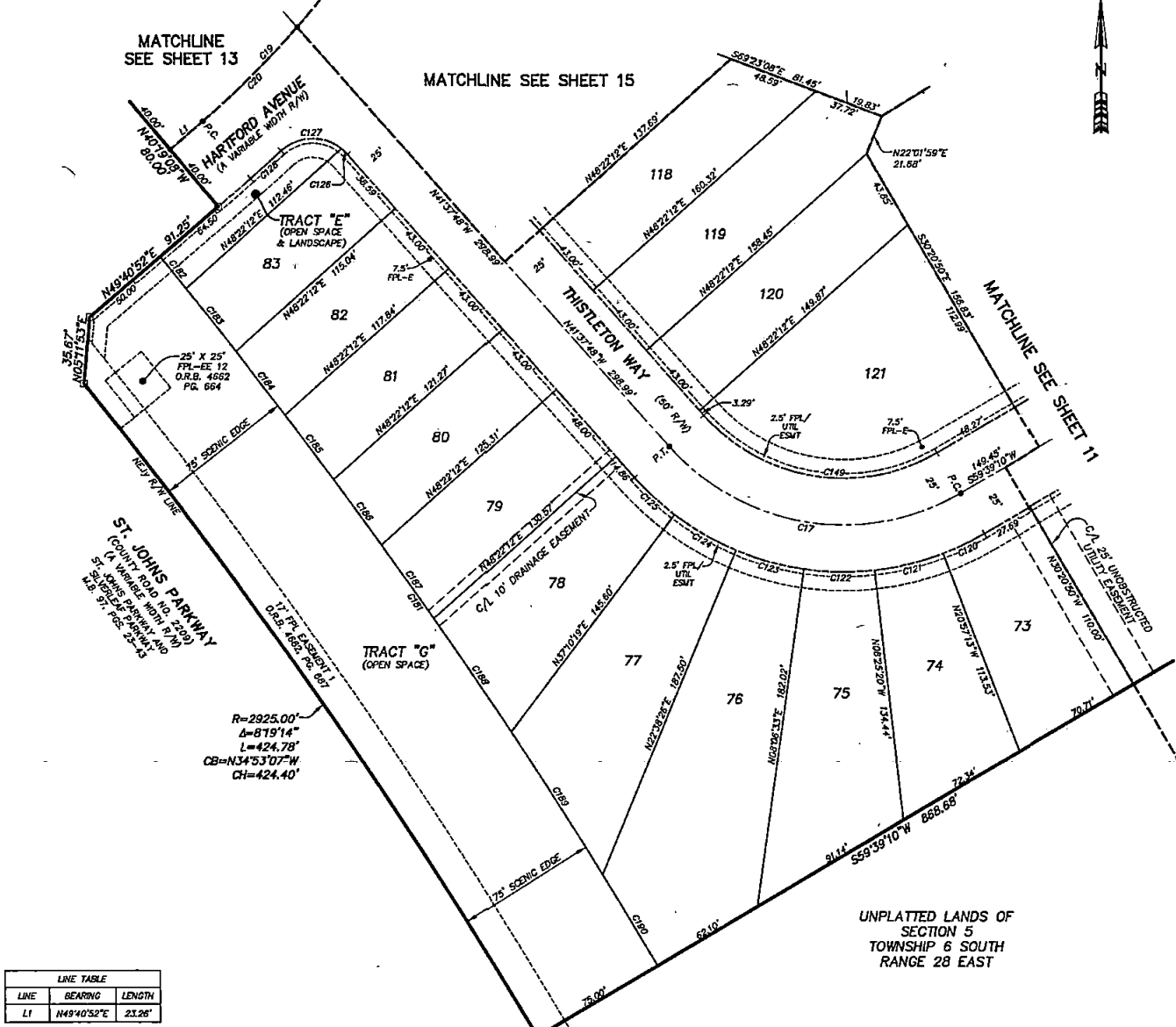
(SILVERLEAF - PARCEL 17C)

BEING A PORTION OF SECTION 5, TOWNSHIP 6 SOUTH, RANGE 28 EAST, TOGETHER WITH A PORTION OF SECTION 32, TOWNSHIP 5 SOUTH, RANGE 28 EAST, ST. JOHNS COUNTY, FLORIDA.

MAP BOOK PAGE

SHEET 12, OF 18 SHEETS

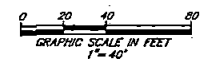
SEE SHEET 2 FOR NOTES



CURVE TABLE					
CURVE	RADIUS	CENTRAL ANGLE	ARC LENGTH	CHORD BEARING	CHORD DISTANCE
C17	125.00'	78°43'02"	171.73'	N80°59'19"W	156.54'
C19	500.00'	11°18'40"	98.71'	N44°01'32"E	98.55'
C20	500.00'	81°304"	71.71'	N45°34'20"E	71.65'
C120	150.00'	92°33'7"	24.59'	N64°20'56"E	24.56'
C121	150.00'	14°31'53"	38.04'	N76°18'43"E	37.94'
C122	150.00'	14°31'53"	38.04'	S89°09'24"E	37.94'
C123	150.00'	14°31'53"	38.04'	S74°37'31"E	37.94'
C124	150.00'	14°31'53"	38.04'	S60°05'36"E	37.94'
C125	150.00'	11°11'53"	29.32'	S47°13'45"E	29.27'
C126	25.00'	10°10'08"	4.44'	N46°42'32"W	4.43'
C127	25.00'	80°51'29"	35.26'	S87°46'16"W	32.43'
C128	540.00'	2°20'17"	22.04'	N48°30'43"E	22.03'
C149	100.00'	78°43'02"	137.33'	S80°59'19"E	126.83'
C181	3000.00'	8°50'22"	462.83'	N39°08'07"W	462.37'
C182	3000.00'	0°25'22"	22.13'	N39°20'37"W	22.13'
C183	3000.00'	0°49'20"	43.06'	N39°43'16"W	43.06'
C184	3000.00'	0°49'23"	43.09'	N37°53'54"W	43.09'
C185	3000.00'	0°49'26"	43.14'	N37°04'30"W	43.14'
C186	3000.00'	0°49'30"	43.19'	N36°15'02"W	43.19'
C187	3000.00'	0°55'20"	48.29'	N35°22'38"W	48.29'
C188	3000.00'	1°23'31"	72.88'	N34°13'12"W	72.88'
C189	3000.00'	1°43'23"	90.21'	N32°59'45"W	90.21'
C190	3000.00'	1°05'08"	56.84'	N31°15'30"W	56.84'

- LEGEND**
- DENOTES SET P.R.M., 4"x4" C.M. STAMPED L.B.#3624, UNLESS OTHERWISE NOTED
 - DENOTES FOUND P.R.M., 4"x4" C.M. STAMPED L.B.#3624, UNLESS OTHERWISE NOTED
 - DENOTES P.C.P., STAMPED L.B.#3624, UNLESS OTHERWISE NOTED
 - P.R.M. PERMANENT REFERENCE MONUMENT
 - C.M. CONCRETE MONUMENT
 - P.C.P. PERMANENT CONTROL POINT
 - L.B. LICENSED BUSINESS
 - R RADIUS
 - Δ CENTRAL ANGLE
 - L ARC LENGTH
 - CB CHORD BEARING
 - CH CHORD DISTANCE
 - P.C. POINT OF CURVATURE
 - P.T. POINT OF TANGENCY
 - (NR) NON-RADIAL
 - CI TABULATED CURVE DATA
 - LI TABULATED LINE DATA
 - R/W RIGHT OF WAY
 - C/L CENTERLINE
 - M.B. MAP BOOK
 - PG. PAGE
 - O.R.B. OFFICIAL RECORDS BOOK
 - FPL FLORIDA POWER & LIGHT
 - DRNG DRAINAGE
 - ESMT EASEMENT
 - AT&T AMERICAN TELEPHONE AND TELEGRAPH COMPANY
 - PDE PRIVATE DRAINAGE EASEMENT
 - UNOBSTRUCTED FIRE DEPARTMENT ACCESS EASEMENT
 - FPLAE FLORIDA POWER & LIGHT ACCESS & ELECTRICAL EASEMENT
 - FPL-E FLORIDA POWER & LIGHT EASEMENT
 - SJC ST. JOHNS COUNTY
 - NAD80 NORTH AMERICAN VERTICAL DATUM
 - MATCHLINE
 - ⊙ SHEET REFERENCE NUMBER

LINE TABLE		
LINE	BEARING	LENGTH
LI	N49°40'52"E	23.26'



PREPARED BY:
ETM SURVEYING & MAPPING, INC
 14775 OLD ST. AUGUSTINE ROAD
 JACKSONVILLE, FL 32258 (904) 642-8550
 CERTIFICATE OF AUTHORIZATION NO. L.B. 3624

HARTFORD

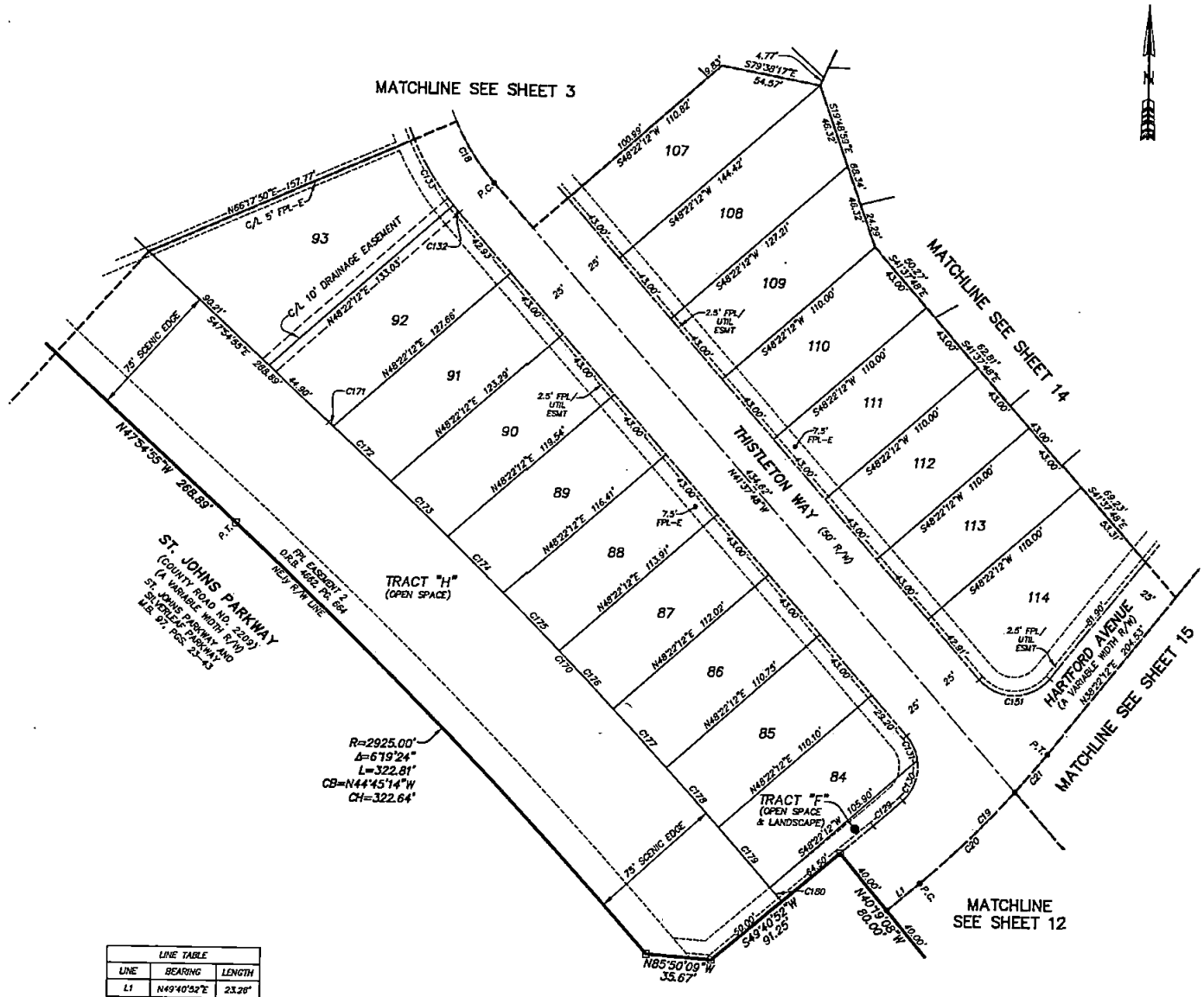
(SILVERLEAF - PARCEL 17C)

BEING A PORTION OF SECTION 5, TOWNSHIP 6 SOUTH, RANGE 28 EAST, TOGETHER WITH A PORTION OF SECTION 32, TOWNSHIP 5 SOUTH, RANGE 28 EAST, ST. JOHNS COUNTY, FLORIDA.

MAP BOOK PAGE

SHEET 13 OF 18 SHEETS

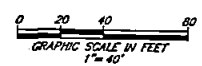
SEE SHEET 2 FOR NOTES



CURVE TABLE					
CURVE	RADIUS	CENTRAL ANGLE	ARC LENGTH	CHORD BEARING	CHORD DISTANCE
C18	125.00'	83°42'53"	182.64'	N0013'38"E	168.82'
C19	500.00'	11°18'40"	98.71'	N44°01'32"E	98.55'
C20	500.00'	81°5'04"	71.71'	N48°34'20"E	71.85'
C21	500.00'	3°25'36"	27.00'	N39°53'00"E	26.99'
C29	460.00'	2°38'42"	21.24'	N48°21'31"E	21.23'
C130	25.00'	55°09'36"	24.06'	N18°27'52"E	23.14'
C131	25.00'	33°31'23"	14.63'	N24°52'07"W	14.42'
C132	150.00'	1°58'07"	3.07'	S40°39'48"E	5.07'
C133	150.00'	15°59'31"	41.87'	S31°41'55"E	41.73'
C151	25.00'	100°00'00"	43.63'	N88°22'12"E	38.30'
C170	3000.00'	6°49'57"	357.75'	N44°29'57"W	357.54'
C171	3000.00'	0°03'53"	3.39'	N47°52'59"W	3.39'
C172	3000.00'	0°49'32"	43.22'	N47°26'17"W	43.22'
C173	3000.00'	0°48'28"	43.16'	N48°36'47"W	43.16'
C174	3000.00'	0°49'24"	43.11'	N45°47'21"W	43.11'
C175	3000.00'	0°49'22"	43.07'	N44°57'58"W	43.07'
C176	3000.00'	0°49'19"	43.04'	N44°08'39"W	43.04'
C177	3000.00'	0°49'18"	43.02'	N43°19'19"W	43.02'
C178	3000.00'	0°49'17"	43.01'	N42°30'02"W	43.00'
C179	3000.00'	0°49'17"	43.01'	N41°40'45"W	43.01'
C180	3000.00'	0°11'09"	8.71'	N41°10'32"W	8.71'

- LEGEND**
- DENOTES SET P.R.M., 4"x4" C.M. STAMPED L.B.#3824
 - DENOTES FOUND P.R.M., 4"x4" C.M. STAMPED L.B.#3824
 - UNLESS OTHERWISE NOTED DENOTES P.C.P., STAMPED L.B.#3824
 - P.R.M. PERMANENT REFERENCE MONUMENT
 - C.M. CONCRETE MONUMENT
 - P.C.P. PERMANENT CONTROL POINT
 - (NR) NON-RADIAL EASEMENT
 - R RADIUS
 - Δ CENTRAL ANGLE
 - L ARC LENGTH
 - CB CHORD BEARING
 - CH CHORD DISTANCE
 - P.C. POINT OF CURVATURE
 - P.T. POINT OF TANGENCY
 - (NR) NON-RADIAL EASEMENT
 - CI TABULATED CURVE DATA
 - LI TABULATED LINE DATA
 - R/W RIGHT OF WAY
 - C/L CENTERLINE
 - M.B. MAP BOOK
 - P.G. PAGE
 - O.R.B. OFFICIAL RECORDS BOOK
 - FPL FLORIDA POWER & LIGHT
 - DRNG DRAINAGE
 - ESMT EASEMENT
 - AT&T AMERICAN TELEPHONE AND TELEGRAPH COMPANY
 - PDE PRIVATE DRAINAGE EASEMENT
 - UFDAE UNOBTSTRUCTED FIRE DEPARTMENT ACCESS EASEMENT
 - FPLAE FLORIDA POWER & LIGHT ACCESS & ELECTRICAL EASEMENT
 - FPL-E FLORIDA POWER & LIGHT EASEMENT
 - SJC ST. JOHNS COUNTY
 - NAVD NORTH AMERICAN VERTICAL DATUM
 - MATCHLINE
 - ③ SHEET REFERENCE NUMBER

LINE TABLE		
LINE	BEARING	LENGTH
L1	N49°40'32"E	23.28'



PREPARED BY:
ETM SURVEYING & MAPPING, INC
 14775 OLD ST. AUGUSTINE ROAD
 JACKSONVILLE, FL 32258 (904) 642-8550
 CERTIFICATE OF AUTHORIZATION NO. L.B. 3824

HARTFORD

(SILVERLEAF - PARCEL 17C)

BEING A PORTION OF SECTION 5, TOWNSHIP 6 SOUTH, RANGE 28 EAST, TOGETHER WITH A PORTION OF SECTION 32, TOWNSHIP 5 SOUTH, RANGE 28 EAST, ST. JOHNS COUNTY, FLORIDA.

MAP BOOK PAGE

SHEET 14 OF 18 SHEETS

SEE SHEET-2 FOR NOTES

CURVE TABLE

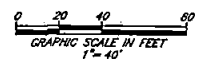
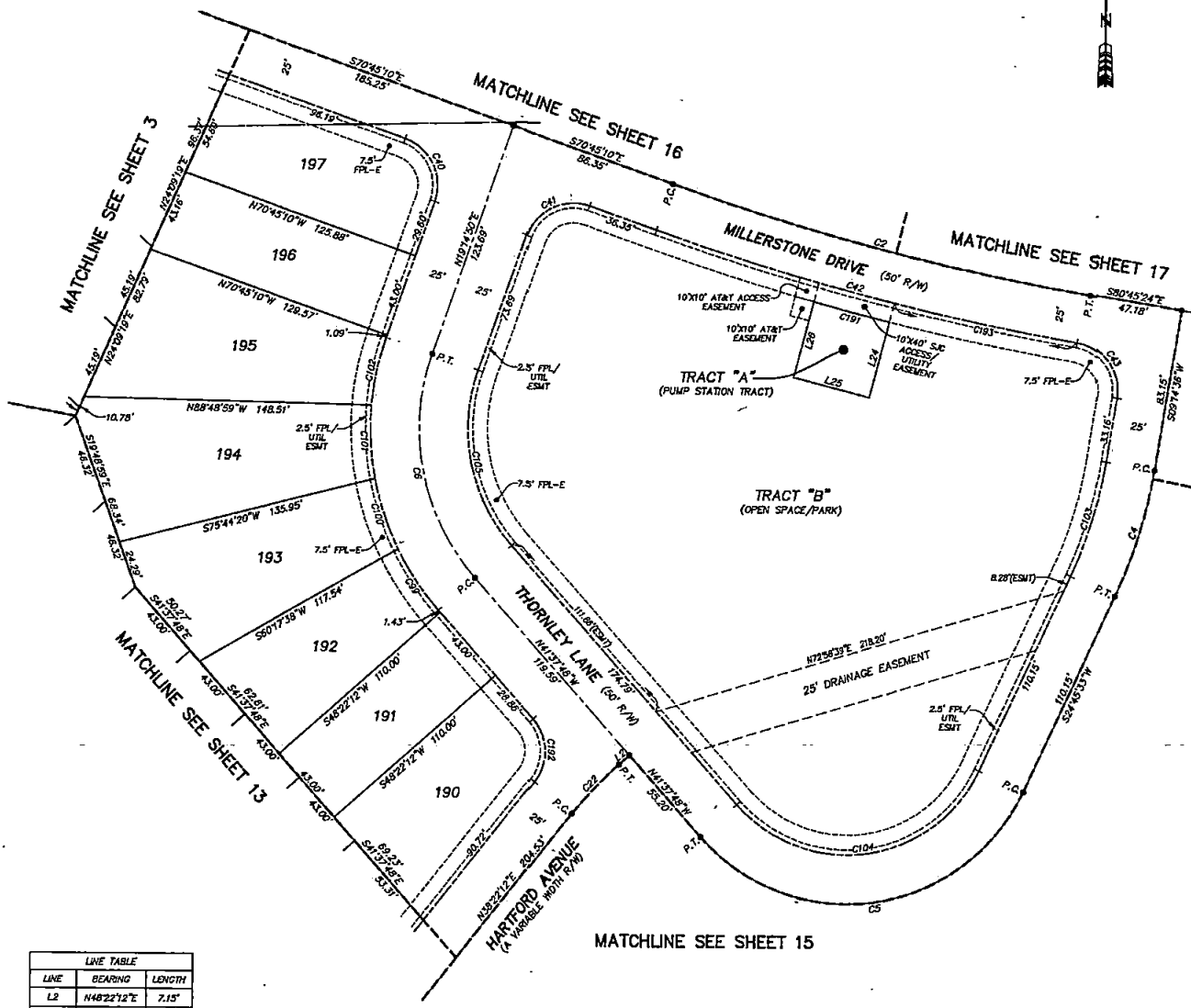
CURVE	RADIUS	CENTRAL ANGLE	ARC LENGTH	CHORD BEARING	CHORD DISTANCE
C2	1270.00'	10°00'13"	221.74'	S75°43'17"E	221.48'
C4	250.00'	15°30'53"	67.70'	S17°00'05"W	87.49'
C5	100.00'	113°36'38"	198.29'	S81°33'52"W	167.38'
C8	115.00'	60°52'38"	122.19'	N11°11'29"W	116.52'
C22	200.00'	10°00'00"	34.91'	N43°22'12"E	34.88'
C40	25.00'	90°00'00"	39.27'	N25°43'10"W	35.38'
C41	25.00'	90°00'00"	39.27'	S84°45'00"W	35.38'
C42	1295.00'	8°52'52"	223.33'	S75°41'36"E	223.06'
C43	25.00'	89°53'39"	39.22'	N35°41'43"W	35.32'
C89	140.00'	15°21'45"	37.54'	S33°56'56"E	37.43'
C100	140.00'	15°26'42"	37.74'	S18°32'42"E	37.63'
C101	140.00'	15°26'42"	37.74'	S03°06'00"E	37.62'
C102	140.00'	14°37'29"	35.74'	S11°56'05"W	35.64'
C103	225.00'	15°30'57"	60.93'	N17°00'03"E	60.74'
C104	73.00'	113°36'38"	148.72'	N81°33'32"E	123.52'
C105	90.00'	60°52'38"	95.63'	S11°11'29"E	91.19'
C191	1305.00'	1°45'23"	40.00'	S75°50'53"E	40.00'
C192	25.00'	90°00'00"	34.91'	N01°37'48"W	32.14'
C193	1295.00'	4°14'03"	95.70'	S78°31'01"E	95.68'

LEGEND

- DENOTES SET P.R.M., 4"x4" C.M. STAMPED L.B.#3624, UNLESS OTHERWISE NOTED
- DENOTES FOUND P.R.M., 4"x4" C.M. STAMPED L.B.#3624, UNLESS OTHERWISE NOTED
- DENOTES P.C.P., STAMPED L.B.#3624
- P.R.M. PERMANENT REFERENCE MONUMENT
- C.M. CONCRETE MONUMENT
- P.C.P. PERMANENT CONTROL POINT
- L.B. LICENSED BUSINESS
- R. RADIUS
- Δ CENTRAL ANGLE
- L. ARC LENGTH
- CB. CHORD BEARING
- CH. CHORD DISTANCE
- P.C. POINT OF CURVATURE
- P.T. POINT OF TANGENCY
- (NR) NON-RADIAL
- C1 TABULATED CURVE DATA
- L1 TABULATED LINE DATA
- R/W RIGHT OF WAY
- C/L CENTERLINE
- M.B. MAP BOOK
- P.G. PAGE
- O.R.B. OFFICIAL RECORDS BOOK
- FPL FLORIDA POWER & LIGHT
- DRNG DRAINAGE
- ESMT EASEMENT
- AT&T AMERICAN TELEPHONE AND TELEGRAPH COMPANY
- PDG PRIVATE DRAINAGE EASEMENT
- UPDAE UNRESTRICTED FIRE DEPARTMENT ACCESS EASEMENT
- FPLAEE FLORIDA POWER & LIGHT ACCESS & ELECTRICAL EASEMENT
- FPL-E FLORIDA POWER & LIGHT EASEMENT
- S/C ST. JOHNS COUNTY
- NAVD NORTH AMERICAN VERTICAL DATUM
- MATCHLINE MATCHLINE
- ① SHEET REFERENCE NUMBER

LINE TABLE

LINE	BEARING	LENGTH
L2	N48°22'12"E	7.15'
L24	N14°29'07"E	40.15'
L25	S75°30'53"E	40.00'
L26	S14°29'07"W	40.15'



PREPARED BY:
ETM SURVEYING & MAPPING, INC
14775 OLD ST. AUGUSTINE ROAD
JACKSONVILLE, FL 32258 (904) 642-8550
CERTIFICATE OF AUTHORIZATION NO. L.B. 3624

HARTFORD

(SILVERLEAF - PARCEL 17C)

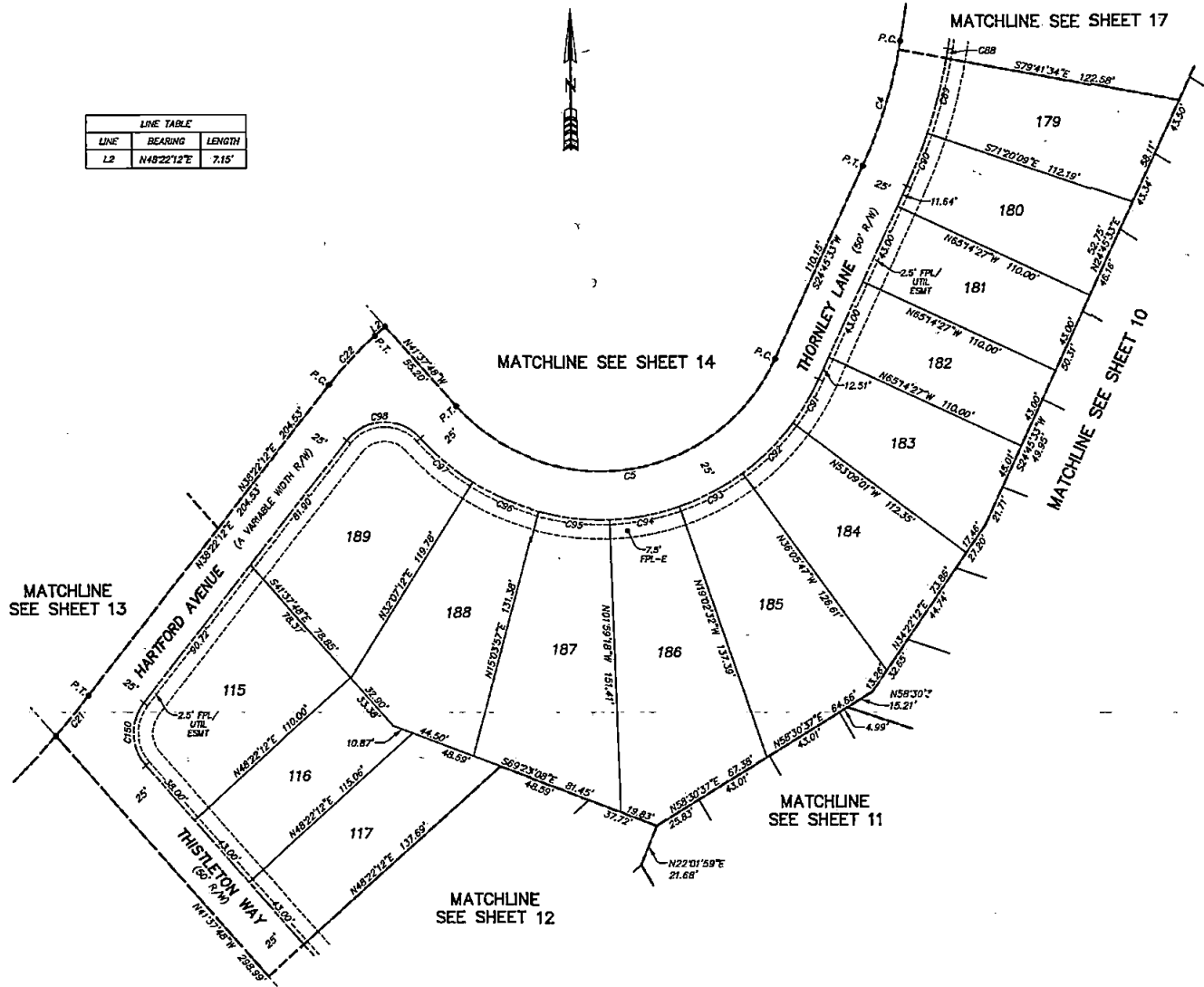
BEING A PORTION OF SECTION 5, TOWNSHIP 6 SOUTH, RANGE 28 EAST, TOGETHER WITH A PORTION OF SECTION 32, TOWNSHIP 5 SOUTH, RANGE 28 EAST, ST. JOHNS COUNTY, FLORIDA.

MAP BOOK PAGE

SHEET 15 OF 18 SHEETS

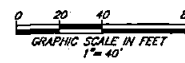
SEE SHEET 2 FOR NOTES

LINE TABLE		
LINE	BEARING	LENGTH
L2	N48°22'12"E	7.15'



CURVE TABLE					
CURVE	RADIUS	CENTRAL ANGLE	ARC LENGTH	CHORD BEARING	CHORD DISTANCE
C4	250.00'	15°30'57"	67.70'	S17°00'05"W	67.49'
C5	100.00'	113°36'38"	188.29'	S81°33'52"W	167.36'
C21	500.00'	3°05'38"	27.00'	N39°35'00"E	26.89'
C22	200.00'	10°00'00"	34.91'	N43°22'12"E	34.86'
C88	275.00'	1°03'50"	5.11'	N09°48'31"E	5.11'
C89	275.00'	8°21'25"	40.11'	N14°29'09"E	40.07'
C90	275.00'	6°05'42"	29.25'	N21°42'42"E	29.24'
C91	125.00'	12°05'26"	26.38'	N30°48'18"E	26.33'
C92	125.00'	17°03'15"	37.21'	N43°22'38"E	37.07'
C93	125.00'	17°03'15"	37.21'	N62°23'51"E	37.07'
C94	125.00'	17°03'15"	37.21'	N78°29'05"E	37.09'
C95	125.00'	17°03'15"	37.21'	S83°27'40"E	37.07'
C96	125.00'	17°03'15"	37.21'	S66°24'26"E	37.07'
C97	125.00'	16°14'04"	35.42'	S49°45'46"E	35.30'
C98	25.00'	99°59'04"	43.63'	S88°21'44"W	38.30'
C150	25.00'	80°00'00"	34.91'	S01°37'48"E	32.14'

- LEGEND**
- DENOTES SET P.R.M., 4"x4" C.M. STAMPED L.B.#3624, UNLESS OTHERWISE NOTED
 - DENOTES FOUND P.R.M., 4"x4" C.M. STAMPED L.B.#3624, UNLESS OTHERWISE NOTED
 - DENOTES P.C.P., STAMPED L.B.#3624, PERMANENT REFERENCE MONUMENT
 - P.R.M. CONCRETE MONUMENT
 - C.M. PERMANENT CONTROL POINT
 - P.C.P. LICENSED BUSINESS
 - L.B. RADIUS
 - R CENTRAL ANGLE
 - Δ ARC LENGTH
 - CB CHORD BEARING
 - CD CHORD DISTANCE
 - CH POINT OF CURVATURE
 - P.C. POINT OF TANGENCY
 - (NR) NON-RADIAL
 - CI TABULATED CURVE DATA
 - LI TABULATED LINE DATA
 - R/W RIGHT OF WAY
 - C/A CENTERLINE
 - M.B. MAP BOOK
 - PG. PAGE
 - O.R.B. OFFICIAL RECORDS BOOK
 - FPL FLORIDA POWER & LIGHT
 - DRNG DRAINAGE
 - ESMT EASEMENT
 - A&T AMERICAN TELEPHONE AND TELEGRAPH COMPANY
 - PDE PRIVATE DRAINAGE EASEMENT
 - UFDAE UNOBSTRUCTED FIRE DEPARTMENT ACCESS EASEMENT
 - FPLAEE FLORIDA POWER & LIGHT ACCESS & ELECTRICAL EASEMENT
 - FPL-E FLORIDA POWER & LIGHT EASEMENT
 - S&C ST. JOHNS COUNTY
 - NAD NORTH AMERICAN VERTICAL DATUM
 - MATCHLINE
 - Ⓢ SHEET REFERENCE NUMBER



PREPARED BY:
ETM SURVEYING & MAPPING, INC
 14775 OLD ST. AUGUSTINE ROAD
 JACKSONVILLE, FL 32258 (904) 642-8550
 CERTIFICATE OF AUTHORIZATION NO. L.B. 3624

HARTFORD

(SILVERLEAF - PARCEL 17C)

BEING A PORTION OF SECTION 5, TOWNSHIP 6 SOUTH, RANGE 28 EAST, TOGETHER WITH A PORTION OF SECTION 32, TOWNSHIP 5 SOUTH, RANGE 28 EAST, ST. JOHNS COUNTY, FLORIDA.

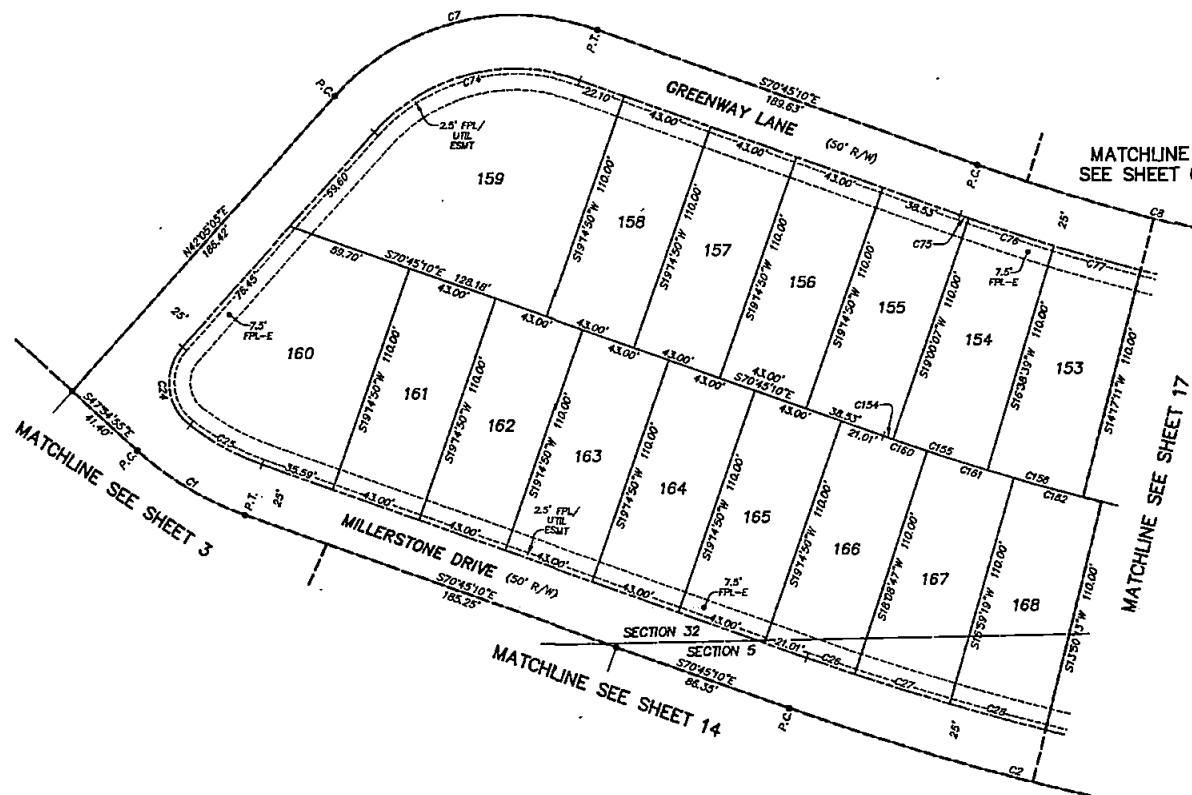
MAP BOOK PAGE

SHEET 16 OF 18 SHEETS

SEE SHEET 2 FOR NOTES

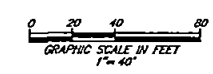
MATCHLINE SEE SHEET 5

MATCHLINE SEE SHEET 6



CURVE TABLE					
CURVE	RADIUS	CENTRAL ANGLE	ARC LENGTH	CHORD BEARING	CHORD DISTANCE
C1	150.00'	22°50'15"	59.79'	S89°20'03"E	58.39'
C2	1270.00'	10°00'13"	221.74'	S75°45'17"E	221.46'
C7	115.00'	67°03'45"	134.80'	N75°39'57"E	127.22'
C9	1000.00'	10°00'13"	174.60'	S75°45'17"E	174.30'
C24	25.00'	94°56'01"	41.42'	S05°22'56"E	36.84'
C25	125.00'	17°54'14"	39.06'	S61°48'03"E	38.00'
C26	1243.00'	1°06'02"	23.92'	S71°18'11"E	23.92'
C27	1243.00'	2°09'28"	46.89'	S72°55'37"E	46.89'
C28	1243.00'	2°09'07"	46.78'	S75°05'14"E	46.78'
C74	90.00'	67°03'45"	105.50'	S75°39'57"W	95.56'
C75	1023.00'	0°14'43"	4.39'	S70°52'32"E	4.39'
C76	1023.00'	2°21'28"	42.18'	S72°10'37"E	42.18'
C77	1023.00'	2°21'28"	42.18'	S74°32'05"E	42.18'
C154	1133.00'	0°14'43"	4.68'	S70°52'32"E	4.68'
C155	1133.00'	2°21'28"	46.71'	S72°10'37"E	46.70'
C158	1133.00'	2°21'28"	46.71'	S74°32'05"E	46.70'
C160	1133.00'	1°06'02"	21.80'	S71°18'11"E	21.80'
C161	1133.00'	2°03'28"	42.74'	S72°55'57"E	42.74'
C162	1133.00'	2°03'07"	42.63'	S75°05'14"E	42.62'

- LEGEND**
- DENOTES SET P.R.M., 4"x4" C.M. STAMPED L.B.#3624, UNLESS OTHERWISE NOTED
 - DENOTES FOUND P.R.M., 4"x4" C.M. STAMPED L.B.#3624, UNLESS OTHERWISE NOTED
 - DENOTES P.C.P., STAMPED L.B.#3624, PERMANENT REFERENCE MONUMENT
 - CONCRETE MONUMENT
 - PERMANENT CONTROL POINT
 - LICENSED BUSINESS
 - R RADIUS
 - ∠ CENTRAL ANGLE
 - L ARC LENGTH
 - CB CHORD BEARING
 - CH CHORD DISTANCE
 - P.C. POINT OF CURVATURE
 - P.T. POINT OF TANGENCY
 - (NR) NON-RADIAL
 - CI TABULATED CURVE DATA
 - LI TABULATED LINE DATA
 - R/W RIGHT OF WAY
 - C/L CENTERLINE
 - M.B. MAP BOOK
 - P.C. PAGE
 - O.R.B. OFFICIAL RECORDS BOOK
 - FPL FLORIDA POWER & LIGHT
 - DRNG DRAINAGE
 - ESMT EASEMENT
 - AT&T AMERICAN TELEPHONE AND TELEGRAPH COMPANY
 - PDE PRIVATE DRAINAGE EASEMENT
 - UPDAE UNOBSTRUCTED FIRE DEPARTMENT ACCESS EASEMENT
 - FPLAE FLORIDA POWER & LIGHT ACCESS & ELECTRICAL EASEMENT
 - FPL-E FLORIDA POWER & LIGHT EASEMENT
 - S/C ST. JOHNS COUNTY
 - NAVD NORTH AMERICAN VERTICAL DATUM
 - MATCHLINE
 - ③ SHEET REFERENCE NUMBER



PREPARED BY:
ETM SURVEYING & MAPPING, INC
 14775 OLD ST. AUGUSTINE ROAD
 JACKSONVILLE, FL 32258 (904) 642-8550
 CERTIFICATE OF AUTHORIZATION NO. L.B. 3624

HARTFORD

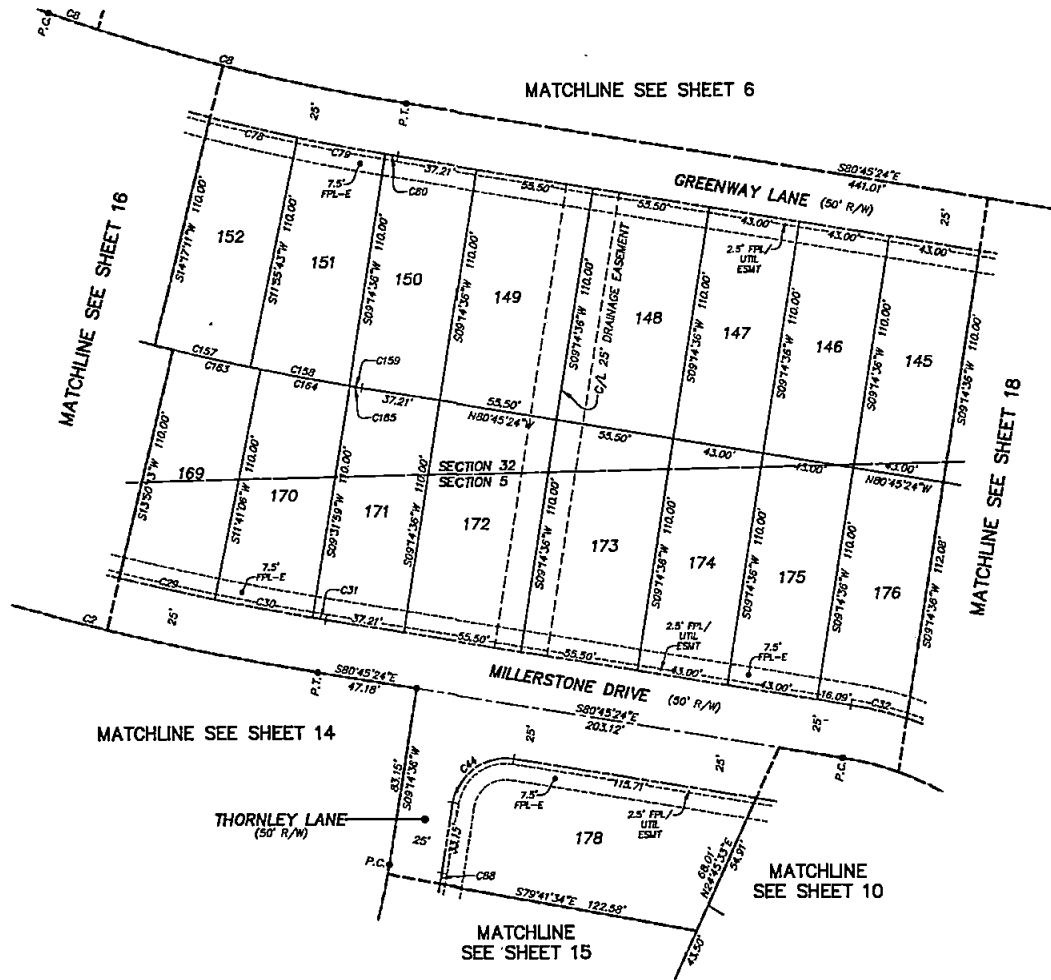
(SILVERLEAF - PARCEL 17C)

BEING A PORTION OF SECTION 5, TOWNSHIP 6 SOUTH, RANGE 28 EAST, TOGETHER WITH A PORTION OF SECTION 32, TOWNSHIP 5 SOUTH, RANGE 28 EAST, ST. JOHNS COUNTY, FLORIDA.

MAP BOOK PAGE

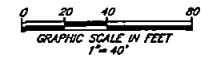
SHEET 17 OF 18 SHEETS

SEE SHEET 2 FOR NOTES



CURVE TABLE					
CURVE	RADIUS	CENTRAL ANGLE	ARC LENGTH	CHORD BEARING	CHORD DISTANCE
C2	1270.00'	10°00'13"	221.74'	S75°45'17"E	221.48'
C3	150.00'	41°41'46"	109.16'	S59°54'31"E	106.77'
C8	1000.00'	10°00'13"	174.60'	S75°45'17"E	174.33'
C29	1245.00'	2°09'07"	46.76'	S77°14'21"E	46.76'
C30	1245.00'	2°09'07"	46.76'	S79°23'27"E	46.76'
C31	1245.00'	0°17'23"	6.30'	S80°36'42"E	6.30'
C32	175.00'	8°50'42"	27.02'	N76°20'02"W	26.99'
C44	25.00'	90°00'00"	39.27'	S54°14'36"W	33.36'
C78	1025.00'	2°21'28"	42.18'	S78°35'33"E	42.18'
C79	1025.00'	2°21'05"	42.07'	S79°14'30"E	42.06'
C80	1025.00'	0°20'02"	5.97'	S80°35'23"E	5.97'
C88	275.00'	1°03'50"	5.11'	N09°45'31"E	5.11'
C157	1135.00'	2°21'28"	48.71'	S78°35'33"E	46.70'
C158	1135.00'	2°23'02"	47.22'	S79°15'48"E	47.22'
C159	1135.00'	0°18'05"	5.97'	S80°35'21"E	5.97'
C163	1135.00'	2°09'07"	42.63'	S77°14'21"E	42.82'
C164	1135.00'	2°09'07"	42.63'	S79°23'27"E	42.62'
C165	1135.00'	0°17'23"	5.74'	S80°36'42"E	5.74'

- LEGEND**
- DENOTES SET P.R.M., 4"x4" C.M. STAMPED L.B.#3824, UNLESS OTHERWISE NOTED
 - DENOTES FOUND P.R.M., 4"x4" C.M. STAMPED L.B.#3824, UNLESS OTHERWISE NOTED
 - DENOTES P.C.P., STAMPED L.B.#3824, UNLESS OTHERWISE NOTED
 - P.R.M. PERMANENT REFERENCE MONUMENT
 - C.M. CONCRETE MONUMENT
 - P.C.P. PERMANENT CONTROL POINT
 - L.B. LICENSED BUSINESS
 - R RADIUS
 - Δ CENTRAL ANGLE
 - L ARC LENGTH
 - CB CHORD BEARING
 - CH CHORD DISTANCE
 - P.C. POINT OF CURVATURE
 - P.T. POINT OF TANGENCY
 - (NR) NON-RADIAL
 - CI TABULATED CURVE DATA
 - LI TABULATED LINE DATA
 - R/W RIGHT OF WAY
 - C/L CENTERLINE
 - M.B. MAP BOOK
 - PAGE
 - O.R.B. OFFICIAL RECORDS BOOK
 - FPL FLORIDA POWER & LIGHT
 - DRNG DRAINAGE
 - ESMT EASEMENT
 - AT&T AMERICAN TELEPHONE AND TELEGRAPH COMPANY
 - PDE PRIVATE DRAINAGE EASEMENT
 - UNOBSTRUCTED FIRE DEPARTMENT ACCESS EASEMENT
 - FPL&E FLORIDA POWER & LIGHT ACCESS & ELECTRICAL EASEMENT
 - FPL-E FLORIDA POWER & LIGHT EASEMENT
 - S.C. ST. JOHNS COUNTY
 - N.A.D. NORTH AMERICAN DATUM
 - MATCHLINE
 - Ⓢ SHEET REFERENCE NUMBER



PREPARED BY:
ETM SURVEYING & MAPPING, INC
 14775 OLD ST. AUGUSTINE ROAD
 JACKSONVILLE, FL 32258 (904) 842-8550
 CERTIFICATE OF AUTHORIZATION NO. L.B. 3624

HARTFORD

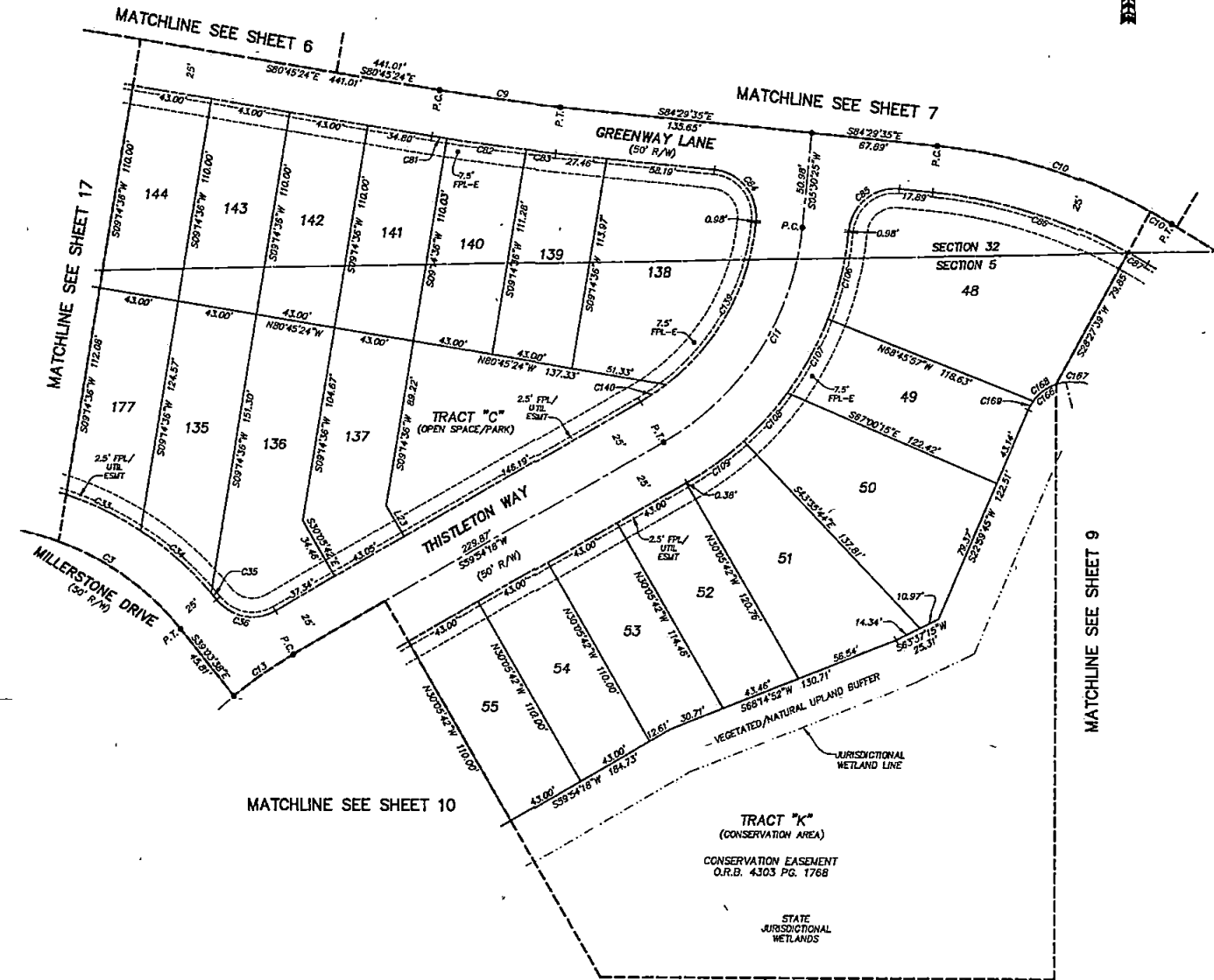
(SILVERLEAF - PARCEL 17C)

BEING A PORTION OF SECTION 5, TOWNSHIP 6 SOUTH, RANGE 28 EAST, TOGETHER WITH A PORTION OF SECTION 32, TOWNSHIP 5 SOUTH, RANGE 28 EAST, ST. JOHNS COUNTY, FLORIDA.

MAP BOOK PAGE

SHEET 18 OF 18 SHEETS

SEE SHEET 2 FOR NOTES

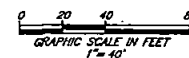


CURVE TABLE					
CURVE	RADIUS	CENTRAL ANGLE	ARC LENGTH	CHORD BEARING	CHORD DISTANCE
C3	150.00'	41°41'46"	109.16'	S59°54'31"E	106.77'
C9	1000.00'	3°44'11"	65.21'	S82°37'28"E	65.20'
C10	300.00'	25°27'33"	133.30'	S71°45'48"E	132.21'
C11	150.00'	54°23'32"	142.41'	S32°42'21"W	137.12'
C13	250.00'	8°57'58"	39.12'	S55°25'20"W	39.08'
C33	175.00'	14°42'02"	44.90'	N64°33'40"W	44.78'
C34	175.00'	15°38'04"	50.81'	N48°33'38"W	50.63'
C35	175.00'	1°30'43"	4.62'	N38°49'12"W	4.62'
C36	25.00'	81°01'54"	35.36'	S73°34'45"E	32.48'
C81	1025.00'	0°27'30"	8.20'	S80°39'09"E	8.20'
C82	1025.00'	2°24'17"	43.02'	S82°25'03"E	43.02'
C83	1025.00'	0°52'24"	-15.62'	S84°03'23"E	15.62'
C84	25.00'	90°00'00"	39.27'	N39°29'35"W	33.36'
C85	25.00'	90°00'00"	39.27'	S50°30'25"W	35.36'
C86	275.00'	22°57'14"	110.17'	N73°00'58"W	109.44'
C106	175.00'	15°43'37"	48.04'	N13°22'14"E	47.88'
C107	175.00'	14°49'18"	45.27'	N28°38'42"E	45.14'
C108	175.00'	11°24'34"	34.85'	N41°45'36"E	34.79'
C109	175.00'	12°28'23"	37.99'	N53°41'08"E	37.82'
C139	125.00'	46°46'38"	102.05'	N28°53'44"E	99.24'
C140	125.00'	7°37'14"	16.63'	N56°05'41"E	16.61'
C166	25.00'	87°25'55"	38.15'	S66°42'42"W	34.55'
C167	25.00'	39°12'45"	17.11'	N69°10'42"W	16.78'
C168	25.00'	35°40'25"	15.57'	S53°22'43"W	15.32'
C189	25.00'	12°32'45"	5.47'	S26°16'07"W	5.46'

LEGEND

- DENOTES SET P.R.M., 4"x4" C.M. STAMPED L.B.#3624, UNLESS OTHERWISE NOTED
- DENOTES FOUND P.R.M., 4"x4" C.M. STAMPED L.B.#3624, UNLESS OTHERWISE NOTED
- DENOTES P.C.P., STAMPED L.B.#3624, PERMANENT REFERENCE MONUMENT
- CONCRETE MONUMENT
- PERMANENT CONTROL POINT
- LICENSED BUSINESS
- R RADIUS
- Δ CENTRAL ANGLE
- L ARC LENGTH
- CB CHORD BEARING
- CD CHORD DISTANCE
- P.C. POINT OF CURVATURE
- P.T. POINT OF TANGENCY
- (NR) NON-RADIAL
- C1 TABULATED CURVE DATA
- L1 TABULATED LINE DATA
- R/W RIGHT OF WAY
- C/L CENTERLINE
- M.B. MAP BOOK
- P.S. PAGE
- O.R.B. OFFICIAL RECORDS BOOK
- FPL FLORIDA POWER & LIGHT
- DRNG DRAINAGE
- ESMT EASEMENT
- AT&T AMERICAN TELEPHONE AND TELEGRAPH COMPANY
- PDE PRIVATE DRAINAGE EASEMENT
- UPDAE UNOBSTRUCTED FIRE DEPARTMENT ACCESS EASEMENT
- FPLAEE FLORIDA POWER & LIGHT ACCESS & ELECTRICAL EASEMENT
- FPL-E FLORIDA POWER & LIGHT EASEMENT
- S.C. ST. JOHNS COUNTY
- NAVD NORTH AMERICAN VERTICAL DATUM
- ① MATCHLINE
- ② SHEET REFERENCE NUMBER

LINE TABLE		
LINE	BEARING	LENGTH
L23	S30°05'42"E	18.15'



PREPARED BY:
ETM SURVEYING & MAPPING, INC
14775 OLD ST. AUGUSTINE ROAD
JACKSONVILLE, FL 32258 (904) 642-8550
CERTIFICATE OF AUTHORIZATION NO. L.B. 3624