

RESOLUTION NO. 2020-465
RESOLUTION OF THE BOARD OF COUNTY COMMISSIONERS
OF ST. JOHNS COUNTY, FLORIDA APPROVING A PLAT FOR
NORTH CREEK (REPLAT).

WHEREAS, RICHMOND AMERICAN HOMES OF FLORIDA, LP, A COLORADO LIMITED PARTNERSHIP, AS OWNER, has applied to the Board of County Commissioners of St. Johns County, Florida for approval to record a plat known as North Creek (Replat).

NOW, THEREFORE BE IT RESOLVED BY THE BOARD OF COUNTY COMMISSIONERS OF ST. JOHNS COUNTY, FLORIDA, as follows:

Section 1. The above-described subdivision plat and its dedicated areas depicted thereon are conditionally approved and accepted by the Board of County Commissioners of St. Johns County, Florida subject to Sections 2, 3, 4, 5 and 6.

Section 2. A Required Improvements Bond in the amount of \$1,733,135.19 is required for construction.

Section 3. A Required Improvements Bond in the amount of \$226,061.11 is required for maintenance.

Section 4. The approval and acceptance described in Section 1 shall not take effect until the Clerk has received a title opinion, certificate, or policy pertaining to the real property that is the subject of the aforementioned subdivision plat which opinion, certificate or policy is in a form acceptable to the County Attorney or Assistant County Attorney.

Section 5. The Clerk is instructed to file and record the consent and joinder(s) to the plat executed by all mortgages identified in the title opinion or certificate of the title in Section 4.

Section 6. The approval and acceptance described in Section 1 shall not take effect until the plat has been signed by each of the following departments, person or offices:

- a) Chairman or Vice-Chairman of the Board of County Commissioners of St. Johns County, Florida;
- b) Office of the County Attorney;
- c) County Growth Management Department;
- d) Office of the County Surveyor; and
- e) Clerk of Courts.

The Clerk shall not sign or accept the Plat for recording until it has been signed by each of the above persons or entities described in a) through d) above. If the plat is not signed and accepted by the Clerk for recording within 14 days from the date hereof, then the above-described conditional approval shall

automatically terminate. If the plat is signed by the Clerk on or before such time, the conditions described herein shall be deemed to have been met.

ADOPTED by the Board of County Commissioners of St. Johns County, Florida, this 1 day of December, 2020.

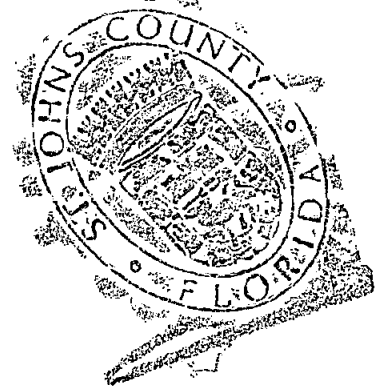
**BOARD OF COUNTY COMMISSIONERS
OF ST. JOHNS COUNTY, FLORIDA**

BY: Henry Dean
Henry Dean, Vice Chairman

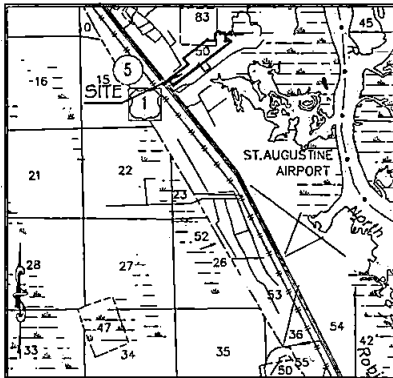
ATTEST: Brandon J. Patty, Clerk of the Circuit Court & Comptroller

Sam Halterman
Deputy Clerk

RENDITION DATE 12/3/20



VICINITY MAP
(1"=5000')



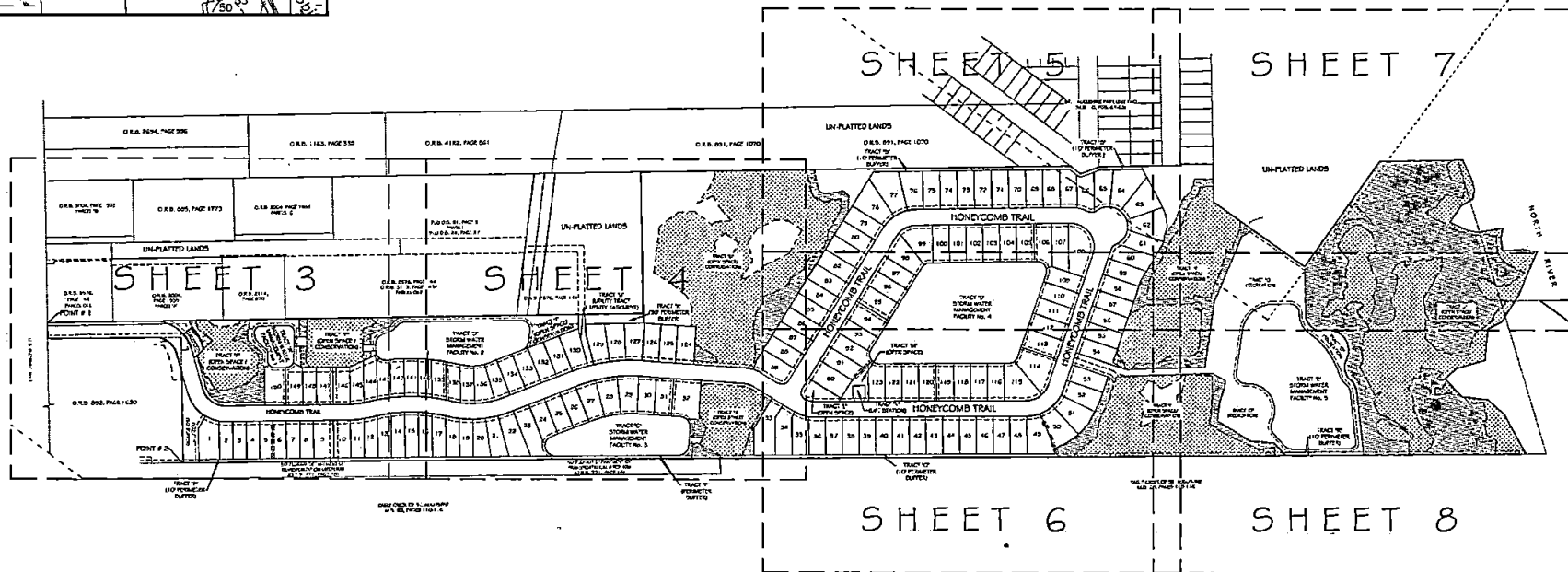
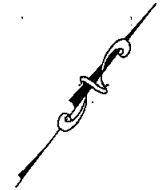
NORTH CREEK

A REPLAT OF A PORTION OF ST. AUGUSTINE PARK UNIT 2, MAP BOOK 10, PAGES 61-63, TOGETHER WITH A PORTION OF THE PABLO SABATE GRANT, SECTION 50, UNSURVEYED SECTION 11 AND THE SECTION 83 L. CAPO GRANT, TOWNSHIP 6 SOUTH, RANGE 29 EAST, ST. JOHNS COUNTY, FLORIDA.

MAP BOOK __ PAGE __

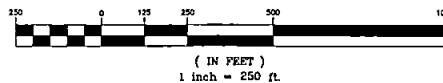
SHEET 2 OF 5 SHEETS

KEY SHEET



POINT	NORTHING	EASTING	DESCRIPTION
1	2053403.68	540946.82	S.W. CORNER OF PLAT
2	2053307.06	541560.86	S.E. CORNER OF PLAT

GRAPHIC SCALE



NOTES:

- BEARINGS SHOWN HEREON ARE REFERENCE TO THE STATE PLANE COORDINATES AS INDICATED HEREON.
- NOTICE: THIS PLAT, AS RECORDED IN ITS GRAPHIC FORM, IS THE OFFICIAL DEPICTION OF THE SUBDIVIDED LANDS DESCRIBED HEREIN AND WILL IN NO CIRCUMSTANCES BE SUPPLANTED IN AUTHORITY BY ANY OTHER GRAPHIC OR DIGITAL FORM OF THE PLAT. THERE MAY BE ADDITIONAL RESTRICTIONS THAT ARE NOT RECORDED ON THIS PLAT THAT MAY BE FOUND IN THE PUBLIC RECORDS OF THIS COUNTY.
- CURRENT LAW PROVIDES THAT NO CONSTRUCTION, FILLING, REMOVAL OF EARTH, CUTTING OF TREES OR OTHER PLANTS SHALL TAKE PLACE WATERWARD OF THE JURISDICTIONAL WETLAND LINE, AS DEPICTED ON THIS PLAT WITHOUT THE WRITTEN APPROVAL OF ST. JOHNS COUNTY OR OTHER REGULATORY AGENCIES WITH JURISDICTION OVER SUCH WETLANDS. IT IS THE RESPONSIBILITY OF THE LOT OWNER, HIS AGENT, AND THE ENTITY PERFORMING ANY ACTIVITY WITHIN THE WETLAND AREA, TO ACQUIRE THE NECESSARY WRITTEN APPROVALS PRIOR TO THE BEGINNING OF WORK. THIS WETLANDS JURISDICTIONAL LINE MAY BE SUPERSEDED AND REFINED FROM TIME TO TIME BY APPROPRIATE GOVERNMENT AGENCIES.
- THE INTENDED USE OF THESE COORDINATES IS FOR GIS BASE MAPPING PURPOSES. THE GEODETIC CONTROL RELIED UPON FOR THESE VALUES WAS N.G.S. GEODETIC NETWORK CONTROL STATION DU22. COORDINATES ARE BASED ON NORTH AMERICAN DATUM 1983/89 - STATE PLANE COORDINATES - FLORIDA EAST ZONE - U.S. FEET.
- WETLAND BUFFERS ARE TO REMAIN NATURALLY VEGETATED AND UNDISTURBED.
- A.L PLATTED UTILITY EASEMENTS SHALL PROVIDE THAT SUCH EASEMENT SHALL ALSO BE EASEMENTS FOR THE CONSTRUCTION, INSTALLATION, MAINTENANCE, AND OPERATION OF CABLE TELEVISION SERVICES; PROVIDED, HOWEVER, NO SUCH CONSTRUCTION, INSTALLATION, MAINTENANCE, AND OPERATION OF CABLE TELEVISION SERVICES SHALL INTERFERE WITH THE FACILITIES AND SERVICES OF AN ELECTRIC, TELEPHONE, GAS, OR OTHER PUBLIC UTILITY.

LEGEND

- = FOUND 1/2" IRON PIPE "CLARY ASSOC" UNLESS OTHERWISE NOTED
- = SET 4"x4" CONCRETE MONUMENT STAMPED 10 6487 UNLESS OTHERWISE NOTED
- ⊕ = SET NAIL & DISK STAMPED 10 6407
- C1 = TABULATED CURVE DATA
- F.P.A.L = FLORIDA POWER AND LIGHT
- LI = TABULATED LINE DATA
- PI = POINT OF INTERSECTION
- PC = POINT OF CURVATURE
- PT = POINT OF TANGENCY
- PRC = POINT OF REVERSE CURVATURE
- PCC = POINT OF COMPOUND CURVATURE
- TOB = 10° OF BANK

PREPARED BY:
ARC SURVEYING & MAPPING, INC.
5202 SAN JUAN AVENUE
JACKSONVILLE, FLORIDA 32210
904-364-6377
UCSDSD BUSINESS NO. 6487

NORTH CREEK

A REPEAT OF A PORTION OF ST. AUGUSTINE PARK UNIT 2, MAP BOOK 10, PAGES 61-63, TOGETHER WITH A PORTION OF THE PABLO SABATE GRANT, SECTION 50, UNSURVEYED SECTION 11 AND THE SECTION 23 L. CAPO GRANT, TOWNSHIP 6 SOUTH, RANGE 29 EAST, ST. JOHNS COUNTY, FLORIDA.

MAP BOOK PAGE SHEET 3 OF 9 SHEETS

Table with columns: CURVE DATA, CORNER DATA, BEARING, DISTANCE, AREA, PERIMETER, etc. for various points and curves.

Table with columns: USE LINE, BEARING, DISTANCE, AREA, PERIMETER, etc. for various land parcels.

Table with columns: USE LINE, BEARING, DISTANCE, AREA, PERIMETER, etc. for various land parcels.

Table with columns: USE LINE, BEARING, DISTANCE, AREA, PERIMETER, etc. for various land parcels.

LEGEND
- FOUND ON PLATS BY SURVEY ASSOC
- SET 424 CONCRETE MONUMENT STAMPED
- LB 6407 UNLESS OTHERWISE NOTED
- UNPLATTED LANDS

SEE SHEET 4

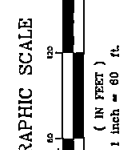
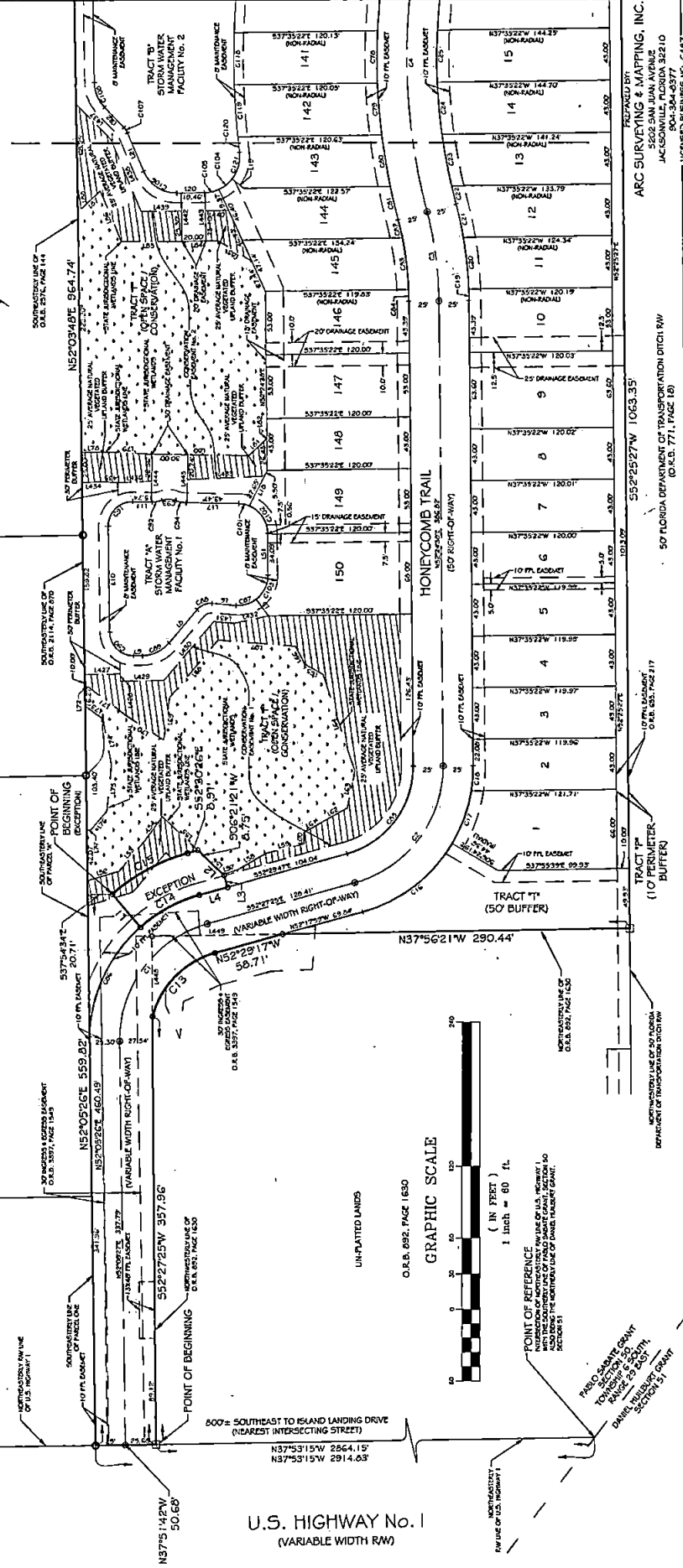
UNPLATTED LANDS
O.R.B. 2576, PAGE 144
O.R.B. 3113, PAGE 143A
PARCEL ONE

UNPLATTED LANDS
O.R.D. 2114, PAGE 670

UNPLATTED LANDS
O.R.B. 3004, PAGE 1955, PARCEL 1W

UNPLATTED LANDS
O.R.B. 2576, PAGE 144, PARCEL ONE

UNPLATTED LANDS
O.R.B. 2576, PAGE 144, PARCEL ONE



POINT OF REFERENCE
WITH THE CORNERS OF U.S. HIGHWAY NO. 1 AND THE CORNERS OF PABLO SABATE GRANT, SECTION 50, TOWNSHIP 6 SOUTH, RANGE 29 EAST, ST. JOHNS COUNTY, FLORIDA.

PABLO SABATE GRANT
TOWNSHIP 6 SOUTH, RANGE 29 EAST, ST. JOHNS COUNTY, FLORIDA

ARC SURVEYING & MAPPING, INC.
5202 SAN JUAN AVENUE
JACKSONVILLE, FLORIDA 32210
(O.R.B. 771, PAGE 18)

50 FLORIDA DEPARTMENT OF TRANSPORTATION DISTRICT 1W
(O.R.B. 771, PAGE 18)

552P2527W 1065.35'

552P2527E 566.87'

552P2527W 1109.97'

552P2527E 121.71'

552P2527W 1119.96'

552P2527E 110.97'

552P2527W 120.00'

552P2527E 120.00'

552P2527W 120.00'

552P2527E 120.00'

NORTH CREEK

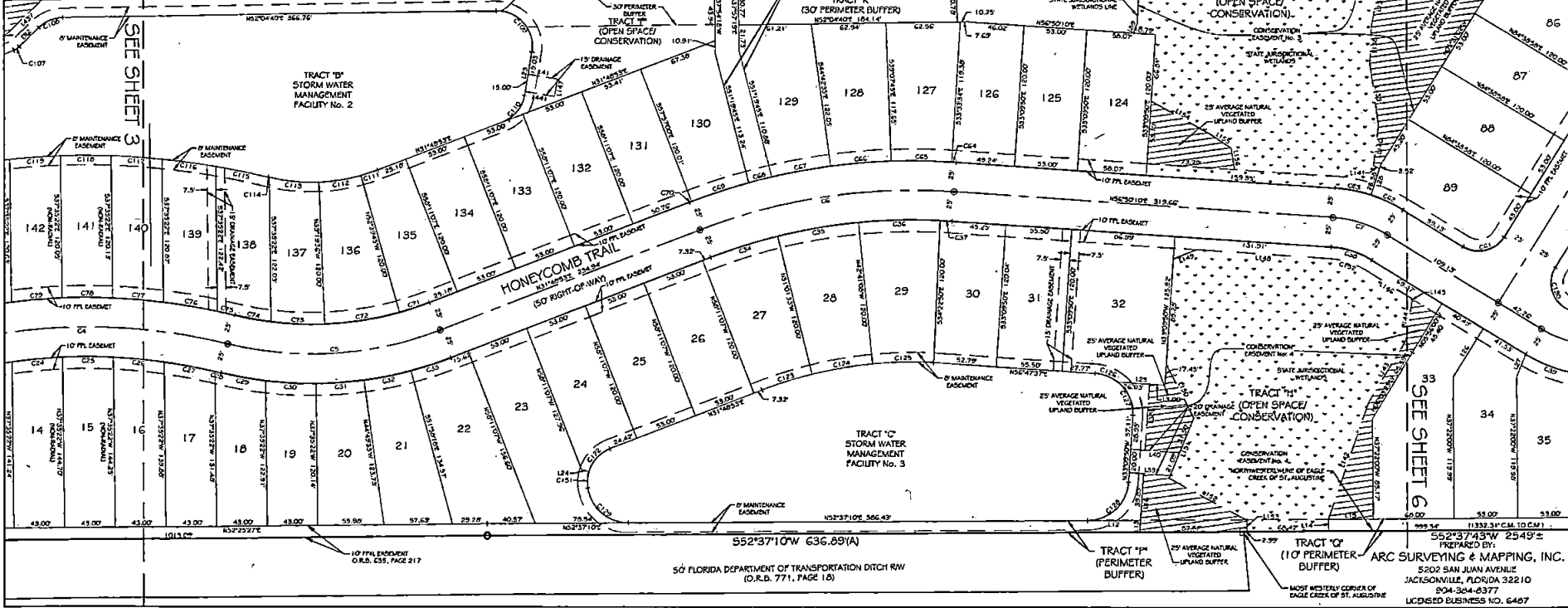
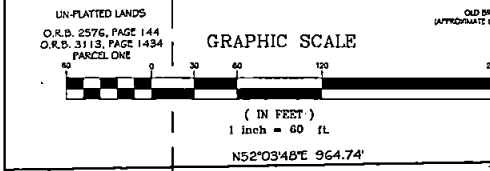
A REPEAT OF A PORTION OF ST. AUGUSTINE PARK UNIT 2, MAP BOOK 1.0, PAGES 61-63, TOGETHER WITH A PORTION OF THE PABLO SABATE GRANT, SECTION 50, UNSURVEYED SECTION 11 AND THE SECTION 83 L. CAPO GRANT, TOWNSHIP 6 SOUTH, RANGE 29 EAST, ST. JOHNS COUNTY, FLORIDA.

O.R.B. 691, PAGE 1070
UN-PLATTED LANDS

MAP BOOK __ PAGE __
SHEET 4 OF 4 SHEETS

CURVE TABLE					CURVE TABLE					CURVE TABLE					LINE TABLE					LINE TABLE																																																																																																																																																																																																
CF	BEARING	CHORD	RADIUS	LENGTH	CF	BEARING	CHORD	RADIUS	LENGTH	CF	BEARING	CHORD	RADIUS	LENGTH	LINE #	BEARING	DISTANCE	LINE #	BEARING	DISTANCE	LINE #	BEARING	DISTANCE	LINE #	BEARING	DISTANCE																																																																																																																																																																																										
C4	S82°43'W	247.54	500.00	250.14	C62	S77°49'W	23.69	125.00	29.70	C10	N02°09'4"E	29.69	30.00	31.02	L12	S52°37'0"E	44.57	L106	N07°51'0"W	14.50	L13	N33°09'50"W	10.07	L107	N04°59'56"E	54.67	L14	S37°21'7"E	10.00	L108	S09°21'46"E	61.78	L15	S52°37'50"E	37.60	L109	S59°37'00"W	44.20	L16	N33°09'50"W	49.63	L110	N41°29'53"W	52.30	L17	N09°33'30"E	23.10	L111	N09°31'15"E	44.21	L18	S27°29'24"E	37.28	L112	N44°43'7"W	45.77	L19	N63°07'17"E	6.35	L113	N26°32'00"E	65.09	L20	S56°50'10"W	39.93	L114	N5°30'39"E	41.73	L21	N09°21'02"W	48.39	L115	N07°30'40"E	51.47	L22	S19°59'24"E	27.10	L116	S09°10'53"E	66.07	L23	N14°52'20"W	20.50	L117	S20°21'04"W	80.54	L24	N33°09'50"W	56.03	L118	S17°40'55"W	81.78	L25	S56°50'10"W	34.31	L119	S74°36'27"W	12.72	L26	N5°30'10"E	41.19	L120	N02°56'37"W	64.49	L27	N14°52'20"W	25.00	L121	N50°13'17"W	62.01	L28	N14°52'20"W	5.22	L122	S17°49'34"W	47.00	L29	N33°09'50"W	53.24	L123	S16°13'10"E	20.45	L30	N63°42'16"W	41.45	L124	S21°21'31"E	44.74	L31	N63°42'16"W	57.99	L125	S32°49'24"W	44.53	L32	S52°37'11"W	66.60	L126	S81°30'04"E	37.64	L33	N33°09'50"W	146.19	L127	S07°40'14"W	19.23	L34	N19°24'43"E	37.78	L128	S26°46'13"E	41.19	L35	N17°35'55"E	36.05	L129	S34°20'43"E	31.02	L36	S47°30'37"E	32.14	L130	S44°40'12"E	53.54	L37	N00°42'45"E	67.92	L131	S27°47'10"E	34.29	L38	N23°42'40"E	10.59	L132	N77°34'11"E	5.74	L39	S49°32'24"E	47.73	L133	N10°09'04"W	104.60	L40	N01°20'39"W	46.60	L134	N00°00'39"W	60.73	L41	N67°19'41"W	32.50	L135	N27°33'33"W	35.00	L42	S27°12'09"W	36.03	L136	N16°20'41"W	0.86	L43	N17°35'55"E	61.64	L137	S54°30'59"W	46.44	L44	N19°31'40"W	43.62	L138	N27°29'24"W	15.00

- LEGEND**
- FOUND 1/2" IRON PIPE CLAY ASSOC. UNLESS OTHERWISE NOTED
 - SET AREA CONCRETE MARKING STAMPED LB 6487 UNLESS OTHERWISE NOTED
 - SET NAIL & DISK STAMPED LB 6487
 - C.I. CONCRETE MARKING
 - P.C. POINT OF CURVATURE
 - P.T. POINT OF TANGENCY
 - P.O.I. POINT OF INTERSECTION
 - P.O.C. POINT OF REVERSE CURVATURE
 - P.O.F. POINT OF COMPOUND CURVATURE
 - T.O.P. TOP OF BANK



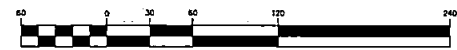
SEE SHEET 5

SEE SHEET 6

NORTH CREEK

A REPLAT OF A PORTION OF ST. AUGUSTINE PARK UNIT 2, MAP BOOK 10, PAGES 61-63, TOGETHER WITH A PORTION OF THE PABLO SABATE GRANT, SECTION 50, UNSURVEYED SECTION 11 AND THE SECTION 03 L. CAPO GRANT, TOWNSHIP 6 SOUTH, RANGE 29 EAST, ST. JOHNS COUNTY, FLORIDA.

GRAPHIC SCALE



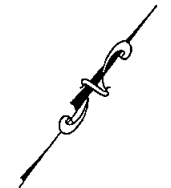
LINE #	BEARING	DISTANCE
L37	S36°09'30"W	18.24
L42	S46°19'58"E	43.90
L43	S18°37'16"E	30.20
L44	N31°25'15"W	15.43
L45	N07°18'35"W	53.00
L50	N24°37'49"E	36.19
L113	S12°43'10"E	20.49
L113	S21°27'13"W	44.74
L134	S32°48'24"W	44.53
L160	N10°44'42"E	64.30
L109	N25°16'29"W	1.84
L190	N64°48'35"E	81.12
L151	N03°38'07"E	76.30
L210	S11°25'29"E	78.34
L219	S05°54'03"E	73.79
L220	S30°49'22"E	61.20
L221	N45°07'15"E	46.01
L222	N49°15'02"E	46.53
L223	S5°27'11"E	26.29
L124	N77°50'12"E	38.75
L411	N01°18'21"W	39.24
L412	N10°20'27"W	69.60
L414	N57°27'11"E	14.19
L416	N77°50'12"E	30.44
L419	N42°19'36"E	37.31
L420	S06°36'30"E	24.07
L421	S35°06'19"E	55.51

LINE #	BEARING	DISTANCE
L109	N25°16'29"W	1.84
L190	N64°48'35"E	81.12
L151	N03°38'07"E	76.30
L210	S11°25'29"E	78.34
L219	S05°54'03"E	73.79
L220	S30°49'22"E	61.20
L221	N45°07'15"E	46.01
L222	N49°15'02"E	46.53
L223	S5°27'11"E	26.29
L124	N77°50'12"E	38.75
L411	N01°18'21"W	39.24
L412	N10°20'27"W	69.60
L414	N57°27'11"E	14.19
L416	N77°50'12"E	30.44
L419	N42°19'36"E	37.31
L420	S06°36'30"E	24.07
L421	S35°06'19"E	55.51

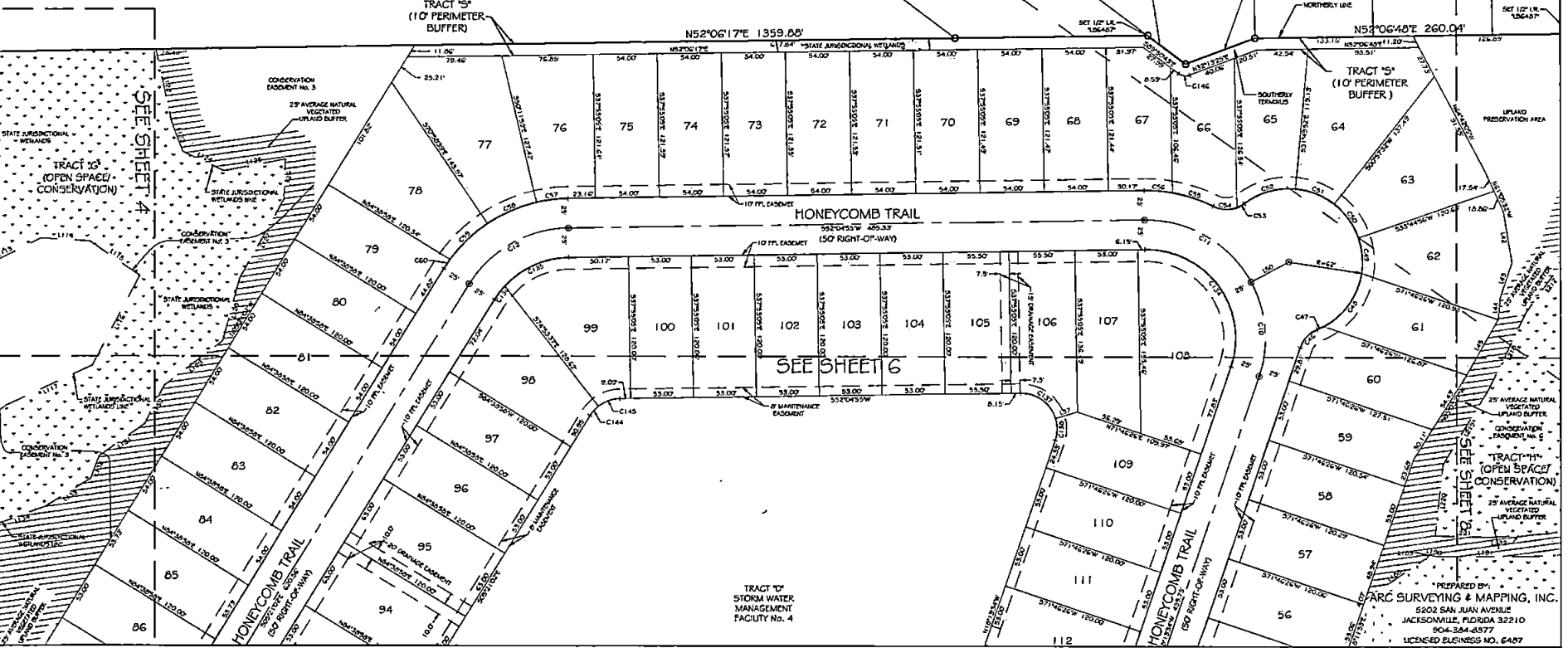
CA	BEARING	CHORD	RADIUS	LENGTH	DELTA
C10	N41°47'53"W	79.98	100.00	62.29	04°07'08"E
C11	S63°21'02"W	103.63	100.00	109.17	02°32'25"E
C12	S23°21'56"W	96.09	100.00	100.24	05°29'39"E
C46	S06°06'44"W	20.63	25.00	21.27	04°44'43"E
C47	N27°33'42"E	6.31	62.00	6.32	00°50'17"E
C48	N01°47'07"W	35.20	62.00	37.27	05°25'43"E
C49	N42°18'01"W	30.00	62.00	30.30	03°00'00"E
C50	N72°38'46"W	35.00	62.00	39.48	03°24'24"E
C51	S74°33'50"W	35.00	62.00	39.48	03°24'24"E
C52	S37°00'42"W	44.76	62.00	45.79	04°21'05"E
C53	N04°09'22"E	7.27	25.00	7.29	01°23'42"E
C54	S36°03'31"E	20.07	25.00	20.59	04°21'14"E
C55	S71°21'30"W	36.00	125.00	36.18	01°25'50"E

CA	BEARING	CHORD	RADIUS	LENGTH	DELTA
C16	S57°34'37"W	23.94	125.00	23.90	01°09'23"E
C37	S43°56'28"W	26.74	125.00	26.79	01°21'45"E
C38	S39°24'41"W	43.08	125.00	43.33	02°04'40"E
C39	S06°28'28"W	43.70	125.00	43.99	02°09'46"E
C60	S03°44'44"E	3.18	125.00	3.19	00°41'33"E
C134	N78°04'20"W	122.64	75.00	143.29	109°41'30"
C135	S28°32'50"W	59.07	75.00	60.74	04°23'10"E
C136	S00°09'51"W	14.42	75.00	14.44	01°10'14"W
C137	S69°07'12"W	36.14	30.00	36.79	07°40'34"E
C138	N36°02'02"W	18.35	30.00	18.63	03°33'26"E
C144	S04°52'41"W	10.69	30.00	11.07	02°02'22"E
C145	S83°25'59"W	18.03	30.00	19.36	03°28'32"E
C146	N61°12'12"E	9.83	10.00	10.11	08°25'53"E

- LEGEND**
- FOUND 1/2" IRON PIPE SURVEY ASSOC UNLESS OTHERWISE NOTED
 - SET 4"x4" CONCRETE MONUMENT STAMPED LB 6487 UNLESS OTHERWISE NOTED
 - ⊕ SET NAIL & DISK STAMPED LB 6487
 - ⊙ TABULATED CURVE DATA
 - ⊙ FLORIDA POWER AND LIGHT
 - ⊙ TABULATED LINE DATA
 - ⊙ POINT OF INTERSECTION
 - ⊙ POINT OF CURVATURE
 - ⊙ POINT OF TANGENCY
 - ⊙ POINT OF REVERSE CURVATURE
 - ⊙ POINT OF COMPOUND CURVATURE
 - ⊙ TOP OF BANK



UN-PLATTED LANDS
O.R.B. 091, PAGE 1070



PREPARED BY:
ARC SURVEYING & MAPPING, INC.
5202 SAN JUAN AVENUE
JACKSONVILLE, FLORIDA 32210
904-354-4577
LICENSED ENGINEER NO. 6487

NORTH CREEK

A REPEAT OF A PORTION OF ST. AUGUSTINE PARK UNIT 2, MAP BOOK 10, PAGES 61-63, TOGETHER WITH A PORTION OF THE PABLO SABATE GRANT, SECTION 50, UNSURVEYED SECTION 11 AND THE SECTION 83 L. CAPO GRANT, TOWNSHIP 6 SOUTH, RANGE 29 EAST, ST. JOHNS COUNTY, FLORIDA.

MAP BOOK ___ PAGE ___
SHEET 7 OF 8 SHEETS

LINE #	BEARING	DISTANCE
L42	S4C1954E	43.00
L43	S18°32'12E	30.22
L44	N31°29'15W	19.43
L45	N07°13'55W	53.60
L191	N57°38'07E	70.30
L192	N49°37'03E	91.87
L193	S40°02'37E	24.82
L194	S54°19'51W	20.31
L195	S19°34'46W	10.77
L196	N63°12'31E	20.37
L197	S47°07'15E	12.23
L198	S47°14'55E	22.54
L199	S26°02'25E	35.37
L214	S18°49'45E	27.72
L215	S06°46'43W	35.49
L216	S18°20'27E	68.02
L217	S01°18'21E	60.77
L218	S11°25'28E	73.34
L219	S05°56'03E	73.79
L220	S30°45'22E	61.26
L223	N44°26'45E	63.40
L224	N59°16'42E	45.63
L225	N21°51'31W	45.56
L226	N09°49'07W	37.34
L227	N21°14'33W	30.59
L228	N21°23'17W	46.80
L229	S72°33'30E	15.50
L230	N18°34'28W	64.02
L231	N22°04'15W	36.63
L232	N29°30'55W	8.90

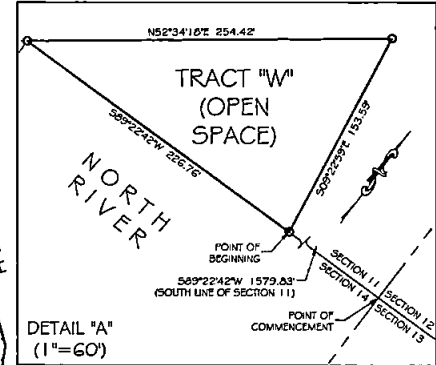
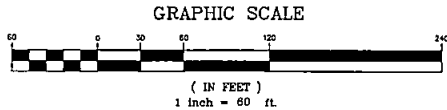
LINE #	BEARING	DISTANCE
L233	S24°20'20W	40.69
L250	N60°40'00W	23.70
L261	N70°29'40W	47.11
L262	N29°18'22E	11.44
L263	N30°52'41E	3.39
L264	N18°16'00E	17.21
L265	N01°46'29W	10.80
L266	S62°13'37W	11.77
L267	S55°46'10W	24.67
L268	S07°09'10W	18.23
L269	S44°45'09E	30.13
L270	S69°19'32W	36.07
L271	S17°39'56W	43.25
L272	S77°04'11W	16.18
L273	N09°31'51W	52.21
L274	N47°10'17E	47.76
L275	N45°32'31W	20.93
L276	N07°36'21E	23.00
L277	N47°07'37W	39.43
L278	N28°19'30W	46.89
L279	N77°35'50W	30.00
L280	N74°12'01W	26.95
L281	N02°55'01W	49.14
L282	N16°23'30E	42.91
L283	N78°35'24E	32.83
L284	N08°21'55E	24.20
L285	S62°23'11E	56.77
L286	S16°09'15W	35.10
L287	S58°16'00E	41.70
L288	S63°30'34E	43.30

LINE #	BEARING	DISTANCE
L289	S19°03'59E	50.41
L290	S62°22'42E	16.11
L291	S26°00'05E	30.23
L292	S09°28'02E	33.07
L293	N79°33'28E	32.09
L294	N47°11'01E	35.00
L295	N13°31'54E	26.17
L296	N55°32'50W	27.78
L297	N62°27'41W	30.54
L298	N09°23'32W	30.67
L299	N24°06'41W	33.68
L300	N38°31'01W	21.81
L301	S73°08'02W	19.11
L302	N67°33'02W	29.22
L303	N28°14'45E	29.27
L304	S39°36'22E	19.48
L305	N26°07'52E	47.64
L306	N59°32'11E	32.41
L307	N40°49'42E	41.82
L308	S35°14'14E	38.12
L309	S00°21'17E	31.49
L310	S13°06'29E	25.45
L311	S07°56'34E	50.12
L312	S42°59'00E	17.43
L313	S52°20'54E	10.84
L314	S39°47'03E	30.93
L315	S62°30'42E	27.56
L316	S62°08'53W	10.74
L317	S29°04'17E	14.07
L326	N12°44'27E	30.24

LINE #	BEARING	DISTANCE
L327	N12°23'44W	26.09
L328	N09°27'24E	44.40
L329	N13°19'21W	13.24
L330	S54°22'20W	37.22
L331	N70°03'00W	51.33
L332	N39°21'57W	30.03
L333	N70°29'42E	42.29
L334	N09°27'42E	25.40
L335	N49°38'02E	36.10
L336	N14°29'31E	63.53
L337	S78°42'04W	48.20
L338	S29°54'15W	27.76
L339	N70°50'11W	34.37
L340	N39°49'57W	51.10
L341	S60°00'00W	32.80
L342	S47°20'42W	34.52
L343	S67°36'37W	72.94
L344	S00°00'01W	40.29
L345	S73°02'12W	25.79
L346	N09°42'33W	37.22
L347	N01°18'16E	35.88
L348	N00°23'57W	50.33
L349	N63°57'12E	56.80
L350	N29°48'30W	48.20
L351	S63°09'42W	44.70
L352	N52°43'46W	50.11
L353	N10°28'00E	21.89
L354	N60°14'37E	31.37
L355	S01°39'16E	50.39
L356	S71°46'20E	23.73

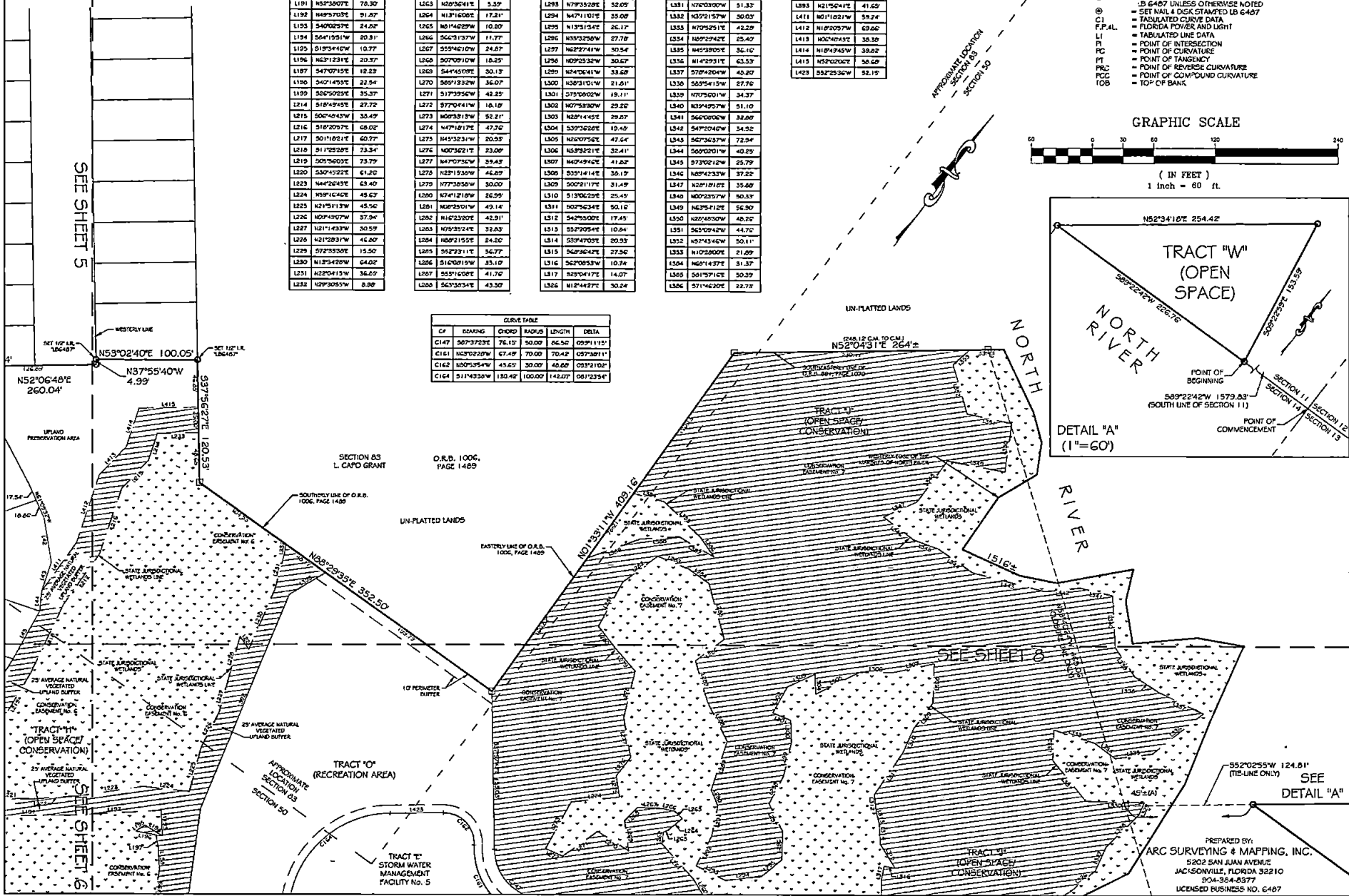
LINE #	BEARING	DISTANCE
L411	N01°18'21W	59.24
L412	N18°20'27W	69.06
L413	N06°40'32E	38.30
L414	N18°49'45W	39.82
L415	N52°00'02E	30.60
L423	S52°25'36W	32.19

- LEGEND**
- = FOUND 1/2" IRON PIPE "GLARY ASSOC" UNLESS OTHERWISE NOTED
 - = SET 4"x4" CONCRETE MONUMENT STAMPED "B 6487 UNLESS OTHERWISE NOTED
 - ⊙ = SET NAIL & DISK STAMPED LB 6487
 - ⊕ = TABULATED CURVE DATA
 - ⊖ = FLORIDA POWER AND LIGHT
 - F.P.A.L. = TABULATED LINE DATA
 - LI = POINT OF INTERSECTION
 - PI = POINT OF CURVATURE
 - PT = POINT OF TANGENCY
 - PCL = POINT OF REVERSE CURVATURE
 - PCC = POINT OF COMPOUND CURVATURE
 - TOB = TOP OF BANK



CURVE TABLE

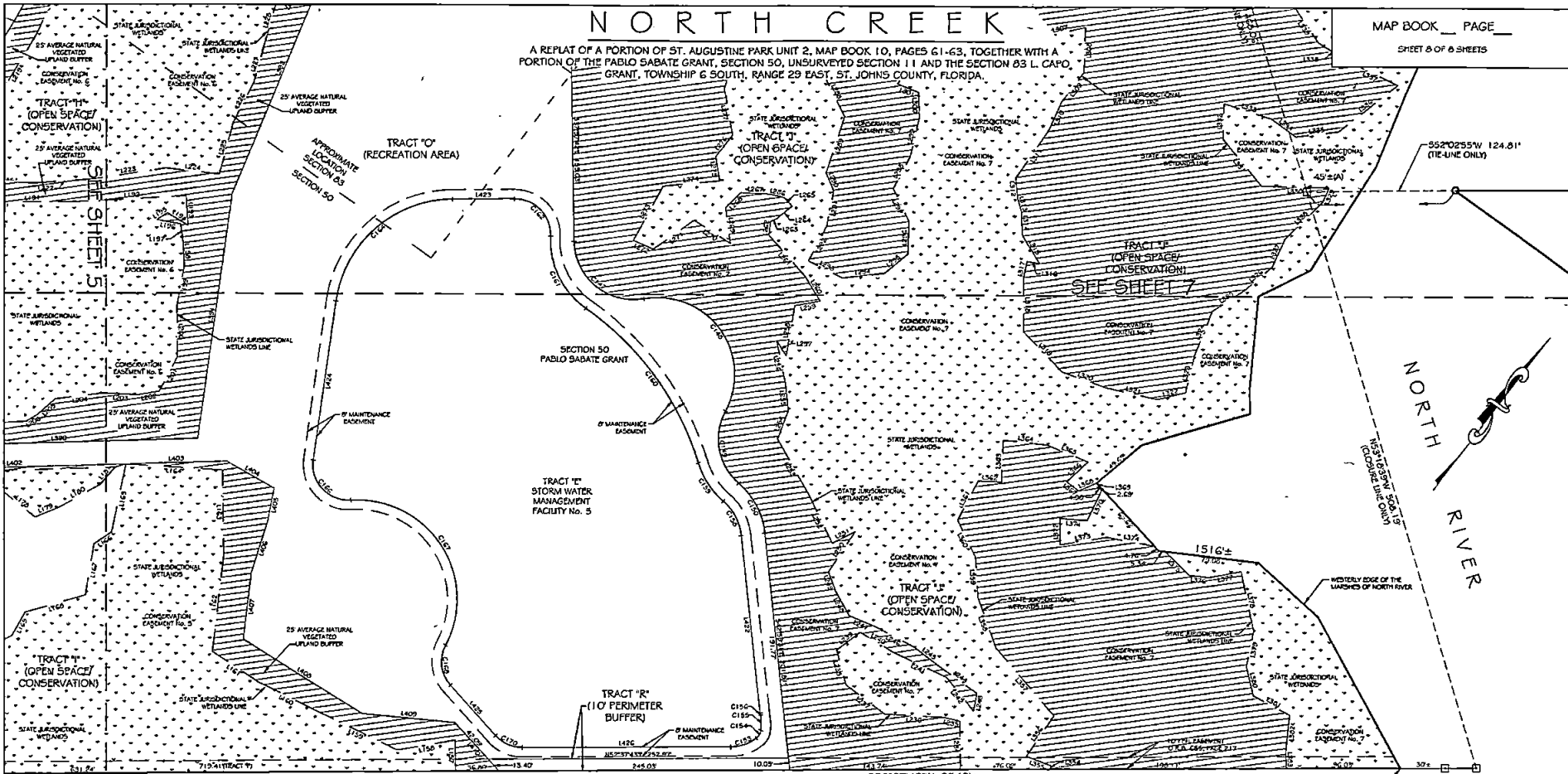
CP	BEARING	CHORD	RADIUS	LENGTH	DELTA
C147	S87°37'23E	76.15	30.00	66.30	099°11'15"
C181	N63°02'20W	67.49	70.00	70.42	057°30'11"
C162	N00°35'44W	43.65	30.00	48.88	093°31'02"
C164	S11°43'30W	130.42	100.00	148.07	001°23'54"



PREPARED BY:
ARC SURVEYING & MAPPING, INC.
5202 SAN JUAN AVENUE
JACKSONVILLE, FLORIDA 32210
904-384-8377
LICENSED BUSINESS NO. 6487

NORTH CREEK

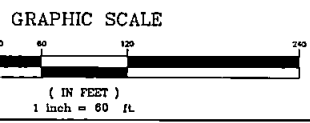
A REPEAT OF A PORTION OF ST. AUGUSTINE PARK UNIT 2, MAP BOOK 10, PAGES G1-63, TOGETHER WITH A PORTION OF THE PABLO SABATE GRANT, SECTION 50, UNSURVEYED SECTION 11 AND THE SECTION 03 L. CAPO, GRANT, TOWNSHIP 6 SOUTH, RANGE 29 EAST, ST. JOHNS COUNTY, FLORIDA.



SEE SHEET 6

EAGLE CREEK OF ST. AUGUSTINE
M.B. 28, PAGES 110-116

- LEGEND**
- FOUND 1/2" IRON PIPE CLARY ASSOC. UNLESS OTHERWISE NOTED
 - SET 4"X4" CONCRETE MONUMENT STAMPED LB 6487 UNLESS OTHERWISE NOTED
 - ⊙ SET NAIL & DISK STAMPED LB 6487 UNLESS OTHERWISE NOTED
 - ⊙ PARALLEL CURVE DATA
 - ⊙ FLORIDA POWER AND LIGHT
 - LI TABULATED LINE DATA
 - PI POINT OF INTERSECTION
 - PC POINT OF CURVATURE
 - PT POINT OF TANGENCY
 - PCC POINT OF REVERSE CURVATURE
 - PCC POINT OF COMPOUND CURVATURE
 - TOB TOP OF BANK



LINE TABLE			LINE TABLE			LINE TABLE			LINE TABLE			LINE TABLE			LINE TABLE			LINE TABLE			LINE TABLE							
LINE #	BEARING	DISTANCE	LINE #	BEARING	DISTANCE	LINE #	BEARING	DISTANCE	LINE #	BEARING	DISTANCE	LINE #	BEARING	DISTANCE	LINE #	BEARING	DISTANCE	LINE #	BEARING	DISTANCE	LINE #	BEARING	DISTANCE					
L1157	N37°15'55"W	25.22	L1154	S64°15'15"W	20.31	L1229	S72°35'38"E	15.50	L1234	N37°15'55"W	40.80	L1254	N62°10'52"W	55.07	L1273	N00°31'13"W	52.21	L3008	S59°14'14"E	36.19	L3226	N69°27'24"E	44.40	L3623	N35°19'39"E	19.50		
L1158	S43°00'02"W	49.51	L1155	S19°34'46"W	10.77	L1234	N37°15'55"W	40.80	L1254	N62°10'52"W	55.07	L1274	N47°10'17"E	47.76	L3009	S00°21'17"E	31.49	L3229	N13°19'18"W	13.24	L3624	N35°19'39"E	35.60	L3833	S37°15'55"E	15.43		
L1159	S79°07'52"W	74.40	L1156	N63°12'31"E	20.37	L1235	S46°02'15"W	14.06	L1255	N42°38'17"W	22.25	L1275	N49°32'51"W	20.93	L3110	S13°06'23"E	25.45	L3300	S44°22'28"W	57.22	L3625	S09°44'07"W	57.22	L3834	N05°16'47"E	37.27		
L1160	S79°15'00"W	36.40	L1157	S47°07'15"E	12.23	L1236	S85°03'37"W	49.87	L1256	N48°27'09"W	37.59	L1276	N00°36'21"E	23.00	L3111	S00°56'34"E	30.16	L3301	N7°03'00"W	51.33	L3626	N79°31'09"E	36.40	L3835	N79°31'09"E	209.43		
L1161	S00°13'59"W	46.84	L1158	S40°14'53"E	22.34	L1237	N69°33'38"W	40.51	L1257	S69°34'20"E	14.64	L1277	N47°07'32"W	39.43	L3112	S42°29'00"E	17.45	L3302	N85°21'57"W	30.03	L3627	S09°44'07"W	24.40	L3836	N05°16'47"E	237.34		
L1162	N00°23'50"W	82.58	L1159	S26°50'28"E	35.37	L1238	N15°25'11"W	30.23	L1258	N72°35'53"W	43.11	L1278	N72°35'53"W	43.11	L3113	S42°29'00"E	10.04	L3303	N07°32'15"E	42.20	L3628	N07°32'15"E	12.62	L3837	N14°19'47"E	106.60		
L1163	N57°42'50"W	71.21	L1160	S37°10'20"E	43.41	L1239	N15°25'11"W	24.92	L1259	N42°31'11"E	21.84	L1279	S24°00'00"E	50.41	L3114	S39°47'00"E	20.93	L3304	N09°29'42"E	23.40	L3629	N07°32'15"E	16.57	L3838	N14°19'47"E	06.07		
L1164	S56°27'17"W	02.25	L1161	S09°02'48"E	32.63	L1240	N64°30'27"E	31.67	L1260	N69°04'00"E	23.70	L1280	S69°22'42"E	16.11	L3115	S60°34'42"E	27.56	L3305	N15°39'05"E	36.10	L3630	S79°20'01"E	2.50	L3839	N14°19'47"E	45.22		
L1165	S25°07'07"E	56.99	L1162	S43°33'10"W	18.62	L1241	N09°21'07"E	30.52	L1261	N78°29'40"W	47.11	L1281	S24°00'00"E	30.93	L3116	S62°00'33"W	10.74	L3306	N14°29'31"E	63.59	L3631	N14°29'31"E	28.49	L3840	N14°19'47"E	28.49		
L1166	S19°18'02"W	17.82	L1163	S50°09'27"W	25.17	L1242	S79°34'40"E	36.39	L1262	N29°19'22"W	11.44	L1282	S09°29'00"E	33.07	L3117	S25°04'17"E	14.07	L3307	S78°42'04"W	48.20	L3632	S79°20'01"E	22.90	L3841	N14°19'47"E	46.75		
L1167	S27°23'43"E	43.92	L1164	S40°24'05"W	41.43	L1243	N02°31'53"W	15.22	L1263	N29°36'41"E	5.57	L1283	N79°35'28"E	32.05	L3118	S38°23'50"E	45.87	L3308	S85°34'13"W	27.76	L3633	S36°50'00"E	22.47	L3842	N14°19'47"E	35.37		
L1168	S50°56'31"W	53.29	L1165	S11°52'15"W	20.71	L1244	S00°56'00"W	36.60	L1264	N13°16'00"E	17.21	L1284	N47°11'01"E	35.00	L3119	S00°40'03"E	46.43	L3309	N70°52'01"W	34.37	L3634	N37°21'55"W	39.29	L3843	N37°21'55"W	39.29		
L1169	S07°12'44"E	22.70	L1166	S29°16'55"W	11.46	L1245	N08°10'27"W	27.22	L1265	N01°46'29"W	10.20	L1285	N13°13'42"E	26.17	L3120	N7°52'24"E	2.94	L3310	N67°02'24"E	5.84	L3635	N37°21'55"W	21.83	L3844	N37°21'55"W	21.83		
L1170	S00°01'50"E	32.88	L1167	S53°42'24"E	61.26	L1246	S00°49'41"W	36.19	L1266	S60°31'57"W	11.77	L1286	N03°38'50"W	27.78	L3121	N65°46'45"E	44.17	L3311	S73°32'22"W	21.83	L3636	S00°01'00"E	23.70	L3845	S73°32'22"E	55.49		
L1171	N39°49'22"E	22.44	L1168	S44°22'45"E	63.40	L1247	S79°39'22"W	24.34	L1267	S55°46'10"W	24.87	L1287	S55°46'10"W	24.87	L3122	N38°51'35"E	24.13	L3312	N60°02'15"E	41.74	L3637	N00°02'15"E	16.42	L3846	N39°49'22"E	15.49		
L1172	N02°35'33"E	39.19	L1169	N59°16'42"E	49.23	L1248	N65°43'49"W	23.76	L1268	S07°09'10"W	10.25	L1288	N02°23'32"E	30.67	L3123	N29°14'07"W	32.80	L3313	N77°24'43"W	75.47	L3638	N42°31'42"E	27.89	L3847	S39°25'36"E	52.15		
L1181	N03°44'40"E	19.14	L1170	N59°19'55"W	45.36	L1249	N39°33'41"W	17.45	L1269	S44°45'00"E	30.12	L1289	N42°00'41"W	33.68	L3124	N19°14'30"W	40.05	L3314	N86°22'45"W	48.44	L3639	N56°22'45"W	48.44	L3848	N39°25'36"E	135.92		
L1191	N93°38'07"E	76.30	L1171	N09°49'07"W	57.94	L1250	N03°31'12"W	41.00	L1270	S05°19'32"W	36.07	L1290	N39°10'11"W	21.81	L3125	N19°28'09"E	32.76	L3315	N40°33'00"W	33.41	L3640	S29°50'31"E	30.66	L3849	S78°34'27"E	37.26		
L1192	N49°57'03"E	91.67	L1172	N61°14'39"W	30.39	L1251	S25°50'47"W	21.79	L1271	S17°39'56"W	42.25	L1291	S79°00'20"W	15.11	L3126	N12°44'27"E	30.24	L3316	N62°29'29"W	54.73	L3641	S00°15'29"E	25.39	L3850	N37°30'05"E	175.50		
L1193	S40°02'57"E	24.22	L1173	N12°29'11"W	46.80	L1252	N62°21'31"W	44.29	L1272	S77°04'41"W	18.10	L1292	N40°47'42"E	41.82	L3127	N12°28'44"W	26.09	L3317	N03°50'09"E	37.33	L3642	N01°21'42"E	34.23					

CURVE TABLE				
CP	BEARING	CHORD	RADIUS	DELTA
C147	N07°37'23"E	76.15	30.00	66.56
C148	N07°37'23"E	117.09	65.00	145.76
C149	S47°32'22"E	62.47	30.00	67.47
C150	N64°31'16"W	47.71	65.00	48.83
C153	N43°50'37"E	22.93	34.00	23.39
C154	N00°16'01"W	7.62	10.00	7.62

CURVE TABLE				
CP	BEARING	CHORD	RADIUS	DELTA
C155	N39°10'50"W	12.69	42.87	12.73
C156	N45°20'16"W	1.64	20.00	1.64
C158	N64°31'16"W	33.53	45.00	33.82
C159	N07°04'12"W	56.34	70.00	39.05
C160	N72°39'29"W	161.63	250.00	164.60
C161	N63°02'22"W	67.49	70.00	70.42

CURVE TABLE				
CP	BEARING	CHORD	RADIUS	DELTA
C162	N00°35'45"W	45.69	30.00	46.60
C164	S11°43'30"E	130.42	100.00	142.07
C165	S79°47'21"E	46.51	30.00	53.82
C167	S69°50'10"E	146.45	64.01	177.81
C168	S43°57'10"E	34.09	30.00	36.25
C170	N77°01'51"E	24.78	30.00	25.59

PREPARED BY:
ARC SURVEYING & MAPPING, INC.
5202 SAN JUAN AVENUE
JACKSONVILLE, FLORIDA 32210
904-364-0377
LICENSED BUSINESS NO. 6487